

630 Third Street Suite 200
San Francisco, CA 94107
Tel 415 908.6408
Fax 415 908.6409
email info@pfauchitecture.com

SPUR Urban Center

Client:
SPUR (San Francisco Planning & Research Association)
215 Sutter Street, Suite 500
San Francisco, CA 94108
415.781.8726 (tel)
415.781.7291 (fax)
Contact: Diane Filippi, ext. 110
dfilippi@spur.org

Architect:
Pfauchitecture, Ltd.
630 Third Street, Suite 200
San Francisco, CA 94107
415.908.6408 (tel)
415.908.6409 (fax)
Contact: Peter Pfauch, ext. 104
pfauch@pfauchitecture.com
Melanie Turner, ext. 111
turner@pfauchitecture.com

Structural Engineer:
Forell/Etessier Engineers, Inc.
160 Pine Street, 6th Floor
San Francisco, CA 94111
415.837.0700 (tel)
415.837.0800 (fax)
Contact: David Friedman
df@forell.com
René Vignos
rvignos@forell.com

Data, Telecom & Security:
Shen Milson & Wilke
33 New Montgomery Street, 10th Fl.
San Francisco, CA 94105
415.391.7610 (tel)
415.391.0171 (fax)
Contact: Dennis Paolotti
dpaolotti@sfsmwinc.com

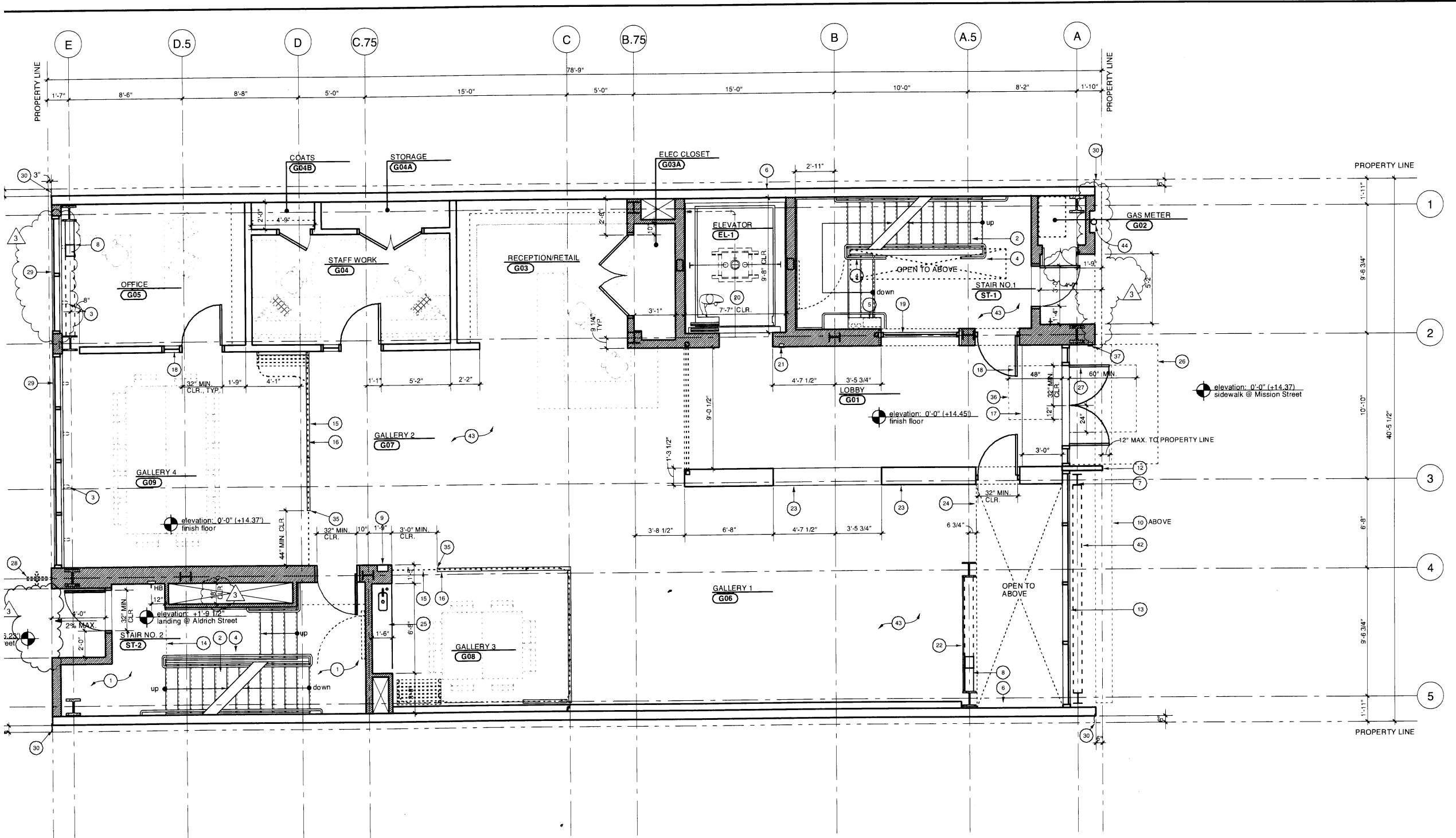
Civil Engineer:
KCA Engineers, Inc.
318 Brannan Street
San Francisco, CA 94107
415.546.7111 (tel)
415.397.9472 (fax)
Contact: Peter Bekey

MEP Engineer:
Flack & Kurtz, Inc.
405 Howard Street, Suite 500
San Francisco, CA 94105
415.398.3833 (tel)
415.533.5311 (fax)
Contact: Saied Nazari
saied.nazari@sf.fk.com
Julie Heibredner
julie.heibredner@sf.fk.com

Lighting Consultant:
Auerbach Consulting
225 Green Street
San Francisco, CA 94111
415.392.7528 (tel)
415.392.7530 (fax)
Contact: Susan Porter
sporter@auerbachconsultants.com

Graphic Designer:
Public Design
10 Arkansas Street, Suite L
San Francisco, CA 94107
415.863.2541 (tel)
415.863.8954 (fax)
Contact: Todd Foreman
foreman@publicdesign.com

Theater, A/V, and Acoustical Engineer:
Charles M Salter Associates, Inc.
130 Sutter Street
San Francisco, CA 94104
415.397.0442 (tel)
415.397.0454 (fax)
Contact: Ethan Salter
Ethan.salter@cmsalter.com



CONCRETE SLAB LAYOUT TO BE FIELD VERIFIED BY ARCHITECT

* ASTERISK INDICATES PANIC HARDWARE AT DOOR

GROUND FLOOR PLAN
1'-0"

ES

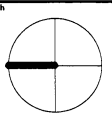
- 7 STEEL COLUMNS. SEE STRUCTURAL DRAWINGS FOR LAYOUT AND SIZING. TYPICAL
- 8 STEEL BRACE FRAME. SEE STRUCTURAL DRAWINGS
- 9 FULLY RECESSED 2-HR RATED FIRE EXTINGUISHER CABINET
- 10 CLEAR ANODIZED ALUMINUM SHADING DEVICES. SEE A3.02 FOR LAYOUT AND SPACING
- 11 CLEAR ANODIZED ALUMINUM WINDOW WALL SYSTEM
- 12 STEEL TRANSITION BAR BETWEEN ALUMINUM WINDOW WALL AND STEEL COLUMN. TRANSITION BAR WRAPS ABOVE. (SEE DASHED LINE) AND TERMINATES AT CONCRETE BLOCK WALL AT GRIDLINE 5
- 13 CLEAR ANODIZED ALUMINUM CURTAIN WALL WITH BUTT GLAZING AT EXTERIOR AND MULLIONS AT INTERIOR. SUPPORT PROVIDED BY STEEL COLUMNS AND BEAMS AT EXTERIOR
- 14 DASHED LINE INDICATES TRANSITION FROM CONC. SLAB OVER METAL DECK AND CONCRETE FILL OF STAIR CONSTRUCTION
- 15 I.C. - SLIDING PANELS ON OVERHEAD TRACK. TYPICAL. SEE DOOR SCHEDULE FOR MORE INFORMATION.
- 16 I.C. - DASHED LINE INDICATES TRACK, ABOVE
- 17 RECESSED COCOA MAT AT ENTRY
- 18 90 MIN. FULL LITE INTERIOR DOOR WITH SIDELITE IN PAINTED HOLLOW METAL FRAME. SEE DOOR SCHEDULE.
- 19 ALTERNATE 1: 2-HOUR RATED "HEAT BARRIER SERIES" TRANSPARENT FIRE-WALL ASSEMBLY WITH 2-HR RATED "PYROSTOP" GLAZING BY TECHNICAL GLASS PRODUCTS OR EQ. MANUF. SEE Q1A7.02
- 20 ELEVATOR
- 21 ELEVATOR CALL BUTTON
- 22 TS WELDED TO STRUCTURAL STEEL COLUMN AT 3'-0" A.F.F. GRIND SMOOTH BEFORE PAINTING
- 23 THICKENED "EXHIBIT WALL". SEE INTERIOR ELEVATION ON 3/A6.08 FOR VARIOUS HEIGHTS.
- 24 EDGE OF FLOOR OPENING AT SECOND FLOOR ABOVE SHOWN DASHED
- 25 COUNTER WITH BAR SINK AND FAUCET
- 26 STEEL AWNING STRUCTURE ABOVE SHOWN DASHED. SEE 2/A8.03
- 27 FULL LITE ENTRY DOORS WITHIN ALUMINUM WINDOW WALL SYSTEM
- 28 BANNER SIGN ABOVE, SHOWN DASHED
- 29 CLEAR ANODIZED ALUMINUM WINDOW WALL WITH BUTT GLAZING AT EXTERIOR AND MULLIONS AT INTERIOR. SUPPORT PROVIDED BY CUSTOM STEEL ANGLES AT FLOOR SLAB. PROTECTED BY SPRINKLERS. SEE NOTE 3.
- 30 CANTED SHEET METAL CLOSURE TO ADJACENT BUILDING
- 31 NOT USED
- 32 NOT USED
- 33 NOT USED
- 34 NOT USED
- 35 I.C. - PROVIDE STOP IN TRACK FOR 4" CLEAR OPENING WHEN PANELS ARE IN THE 'CLOSED' POSITION
- 36 PROVIDE LEVEL LANDING AREA AT ENTRY AS REQUIRED BY SECTION 1133B.2.4 OF THE CBC, SHOWN DASHED
- 37 RECESSED HAND ACTIVATED DOOR OPENING HARDWARE TO BE MOUNTED IN ACCORDANCE WITH SECTION 1133B.2.5.2 OF THE CBC
- 38 NOT USED
- 39 PROVIDE BARRIER INSTALLED PER SECTION 1005.3.3.4 OF THE CBC
- 40 CLEAR ANODIZED ROLL-DOWN SECURITY GATE
- 41 PAINTED METAL RAILING AT 3'-0" A.F.F. IN LIEU OF PONY WALL REQUIRED BY MANUF. OF TYPE WS SPRINKLERS.
- 42 STEEL BEAM ABOVE, S.S.D.
- 43 SEALED CONCRETE SLAB. S.S.D. FOR MORE INFO
- 44 RECESS WALL FOR FIRE DEPARTMENT INLET CONNECTION ASSEMBLY. SEE PLUMBING DWGS

No.	Date	Issues and Revisions	By	Check
	02/15/2005	100% SCHEMATIC DESIGN		
	09/09/2005	SITE PERMIT		
	12/02/2005	50% DD/CD		
	01/13/2006	95% DD/CD		
	04/12/2006	REVISION TO SITE PERMIT		
	10/03/2006	REVISION TO SITE PERMIT #2		
	10/23/2006	REVISION TO SITE PERMIT #3		
	11/22/2006	100% CD ISSUED FOR PERMIT		
	03/21/2007	BID SET ISSUED		
	05/08/2007	DBI RESPONSE #1 (DRAFT)		
2	11/08/2007	DBI RESPONSE #1		
3	11/08/2007	VE BID SET		

Project Name: **SPUR URBAN CENTER**

Project Number: **2322**

Description: **GROUND FLOOR PLAN**

Ref. North: 

Sheet: **A2.02** of

All drawings and written material appearing herein constitute original and unpublished work of the architect and may not be duplicated, used or distorted without written consent of the architect. If this sheet does not measure 24" x 36", then it has been revised from its original size, and all scale notes should be adjusted. This line should measure one inch. Do not scale off drawings.