



ONESF

Building Our Future

onesanfrancisco.org

There's only one San Francisco. Let's take care of it.



10-Year Capital Plan

June 2019

CAPITAL PLANNING IN SAN FRANCISCO

2

- ▣ San Francisco's commitment to building a more resilient and vibrant future

- ▣ Primary responsibilities include:
 - ▣ Developing "best practice" policies around capital planning

 - ▣ Developing the City's 2-year Capital Budget, and 10-year Capital Plan

 - ▣ Developing financing strategies for critical capital projects, and providing interdepartmental coordination

 - ▣ Providing policy and analytical support to the Capital Planning Committee and elected leaders as requested

10-YEAR CAPITAL PLAN

3

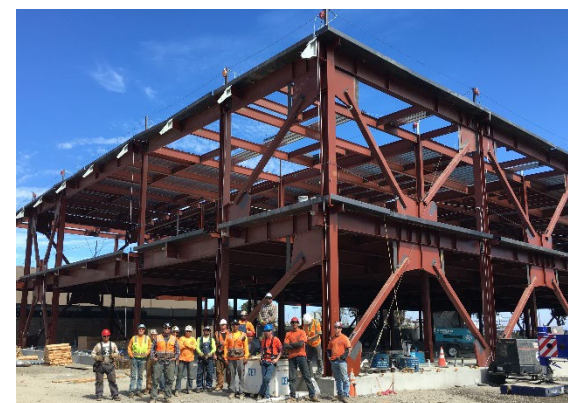
- ▣ **Constrained 10-year plan of finance**
 - ▣ Created in 2006 to coordinate and prioritize infrastructure investments
 - ▣ Objective funding principles – including resilience and sustainability
 - ▣ Plan captures \$39 billion of planned projects through 2029
- ▣ **Ongoing Policies & Programs**
 - ▣ Pay-As-You-Go
 - ▣ GO Bonds
 - ▣ General Fund Debt
- ▣ Updated every other year
- ▣ Admin Code May 1 approval deadline



RECENT CAPITAL ACHIEVEMENT HIGHLIGHTS

4

- ▣ Won approval on the \$425M Seawall G.O. Bond
- ▣ HOPE SF completed construction at Hunters View & Alice Griffith sites
- ▣ Significant progress on the development of Treasure Island
- ▣ Completed Phase 2 and Phase 3 of the Moscone Convention Center Expansion Project
- ▣ Continued to work toward uniform physical access for persons with disabilities
- ▣ Started work on ZSFG Bldg 5, and Southeast, Castro Mission and Maxine Hall Health Centers
- ▣ Opened three new Navigation Centers
- ▣ Advanced the Emergency Firefighting Water Supply projects
- ▣ Completed replacement of two fire stations
- ▣ Completed the Office of the Chief Medical Examiner
- ▣ Completed renovations at eight Neighborhood Parks
- ▣ Started construction to transform the Asian Art Museum
- ▣ Achieved LEED Gold at the Main Library
- ▣ Completed rail upgrades in the Sunset and Twin Peaks Tunnels and purchased new Light Rail Vehicles
- ▣ Raised the City's Pavement Condition Index to 74



SAN FRANCISCO'S RESILIENCE CHALLENGES

5



EARTHQUAKES

There is a 76% chance the Bay Area will experience a 7.0 magnitude earthquake

in the next 30 years. Even the relatively moderate and distant 1989 Loma Prieta Earthquake (6.9) caused substantial damage to our city. It is imperative to the survival of San Francisco that we continue working to prepare and recover from the "big one."



CLIMATE CHANGE

The impacts of global climate change are already being felt in the form of drought

and increasingly severe storm events. We must secure our city's future through mitigation, while recognizing the likely impacts of climate change by beginning to adapt today rather than when it is too late.



SEA LEVEL RISE

We expect a total in 66" of sea level rise to impact our shores by 2100. As

we plan for the growth of our city, we need to adapt to this challenge that threatens not only our waterfront but also our way of life in San Francisco and regionally.



INFRASTRUCTURE

Infrastructure is central to our daily lives—from the roads and pipes we use

every day, to the larger systems, like food and social networks and housing that we rely on as lifelines. Sometimes these systems continue to operate past their intended life span and sometimes they are inadequate all together to meet the needs of a growing and vibrant city.



SOCIAL INEQUITY

San Francisco embraces equality and equity in all policies but this work

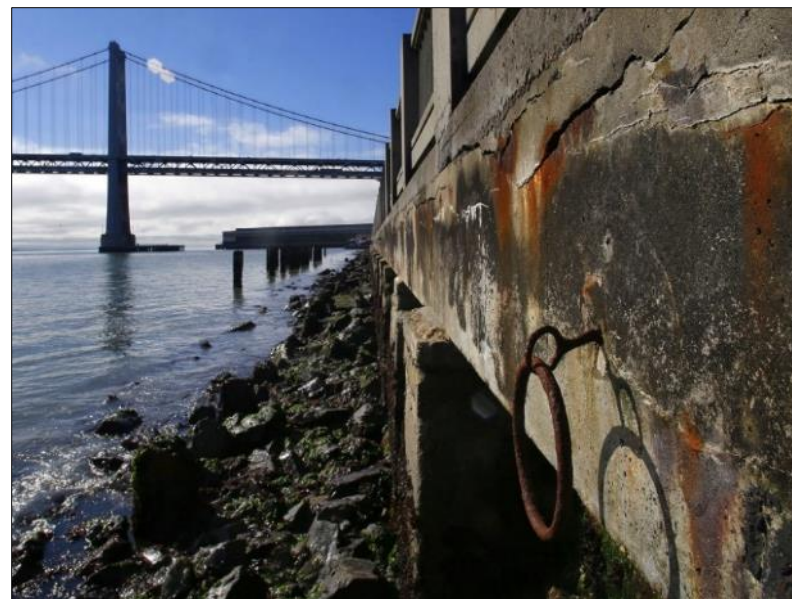
is never done. Social equity and inclusiveness needs to be at the core of what makes a city thrive.



UNAFFORDABILITY

Forty-five percent of renters in San Francisco pay more than 30% of their household

income in rent, Median home prices are continuing to rise, making it a challenge for first time home buyers. San Francisco is becoming out of reach for many of the people who made the city what it is today.



CAPITAL PLAN

Funding Principles

6

1. Address legal or regulatory mandate
2. Protect life safety and enhance resilience
3. Ensure asset preservation and sustainability
4. Programmatic and planned needs
5. Economic development

Equity is named as a guiding principle for all projects, regardless of funding priority.

CAPITAL PLAN

Policies and assumptions

7

- Maintained 7% growth rate of the Pay-As-You-Go Program
 - Clarified that going forward SB1 Street Repaving funds would be considered a permanent source for the Pay-Go Program
 - This results in a commitment of \$157.2M in FY20, and nearly \$2.2B over the 10 years

- Adjusted Street Resurfacing Pavement Condition Index (PCI) target from 70 to 75 to reflect change in scoring methodology, keeps policy to fund at a level which achieves that target PCI by 2025

- ADA-related policy continues to prioritize barrier access removal with recommended full funding for the ongoing Curb Ramps right-of-way program

- Maintained \$10M/yr for Enhancement projects

CAPITAL PLAN

Funding Overview FY20-29

8

Summary by Service Area FY 20-29

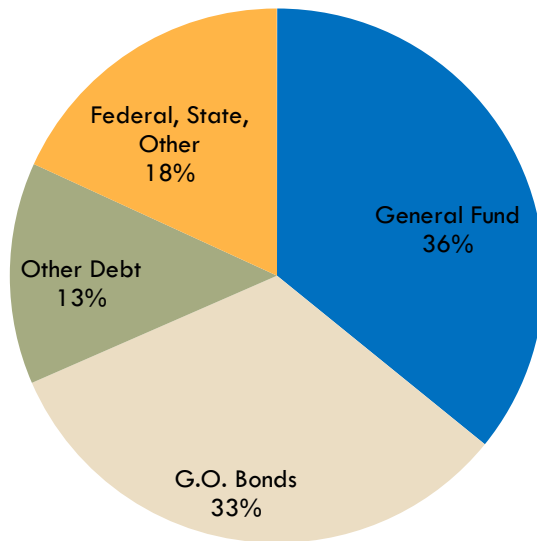
(in \$millions – includes all funding sources)

	GENERAL FUND DEPTS	ENTERPRISE DEPTS	EXTERNAL AGENCIES	TOTAL
Public Safety	1,632	-	-	1,632
Health and Human Services	601	-	15	616
Infrastructure & Streets	1,615	8,036	-	9,650
Recreation, Culture, and Education	892	-	1,211	2,103
Economic & Neighborhood Development	-	2,409	4,743	7,152
Transportation	-	9,817	7,849	17,665
General Government	324	-	-	324
TOTAL	5,064	20,261	13,818	39,143

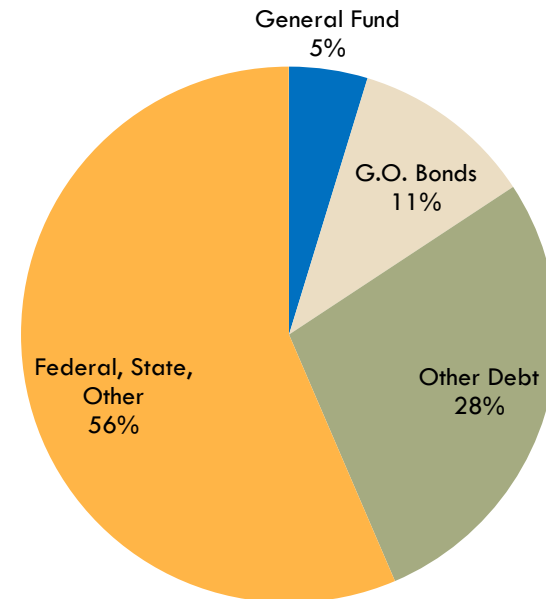
CAPITAL PLAN

Sources FY20 – 29

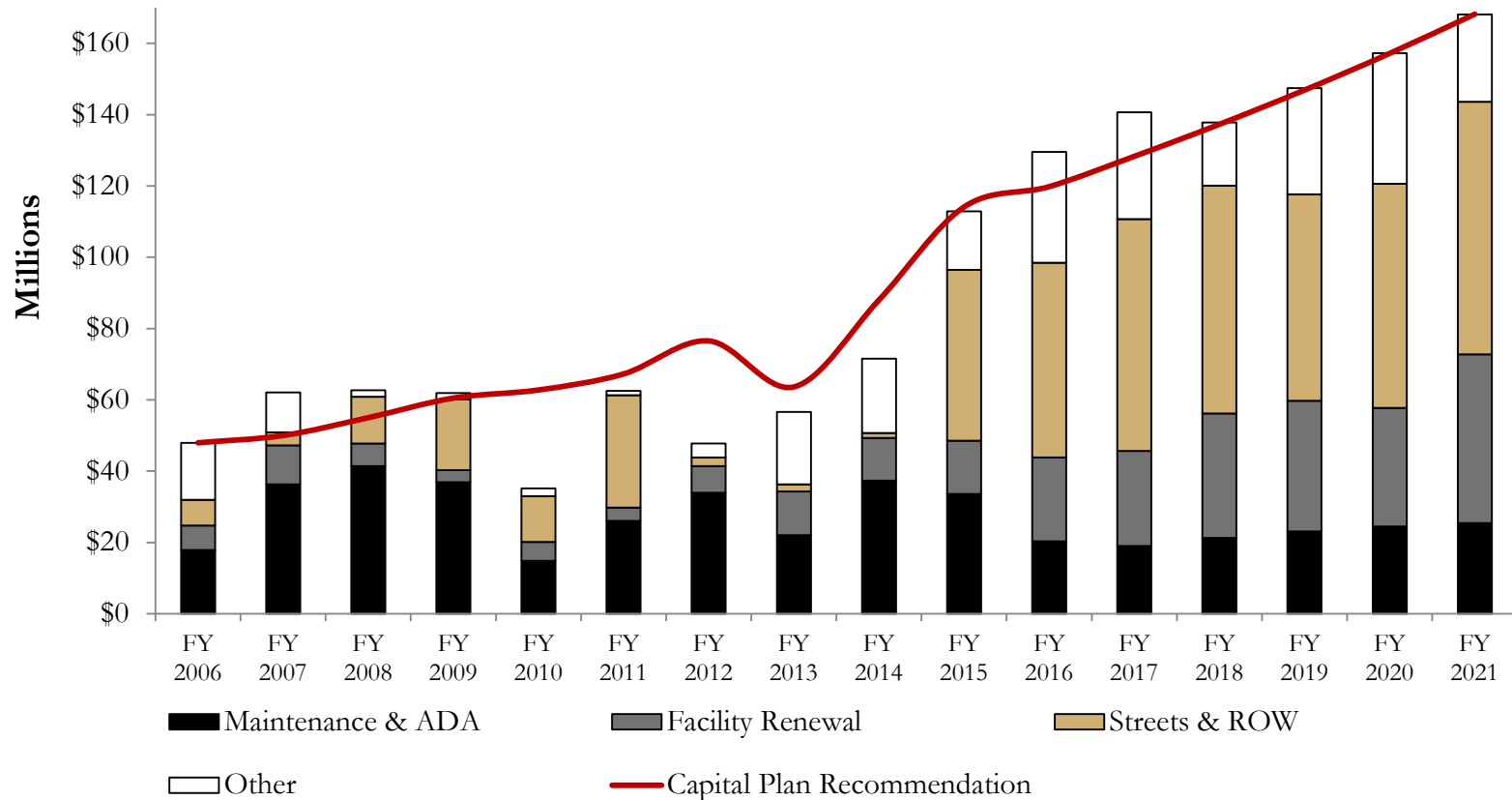
Funding Sources - GF Depts



Funding Sources - All Depts



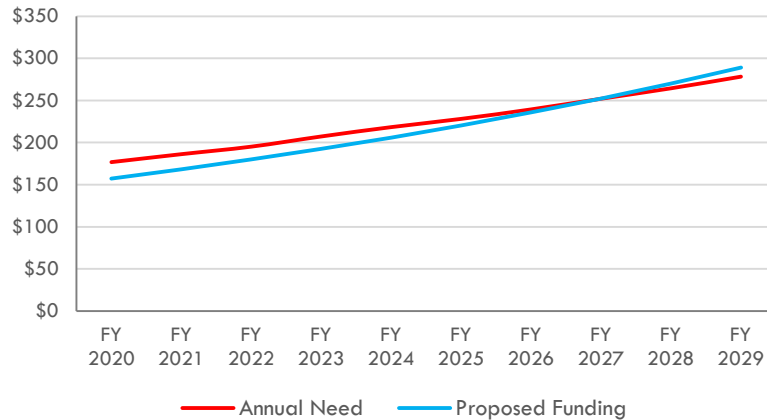
Historical Pay-Go Funding Levels



CAPITAL OUTLOOK

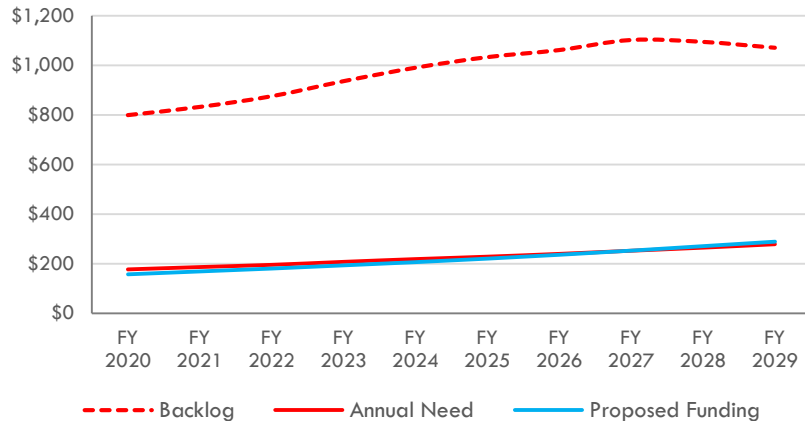
Impact of Pay-Go Funding Level on Backlog

**Pay-as-you-go Program
Funding Level vs. Annual Need**



- Even if the Pay-Go Program is fully funded at Capital Plan-recommended levels, we don't hit our annual renewal need target until FY2027

**Pay-as-you-go Program
Impact of Funding Level on Backlog**



DEBT PROGRAM

General Fund (GF) Debt Schedule

12

General Fund Debt Program

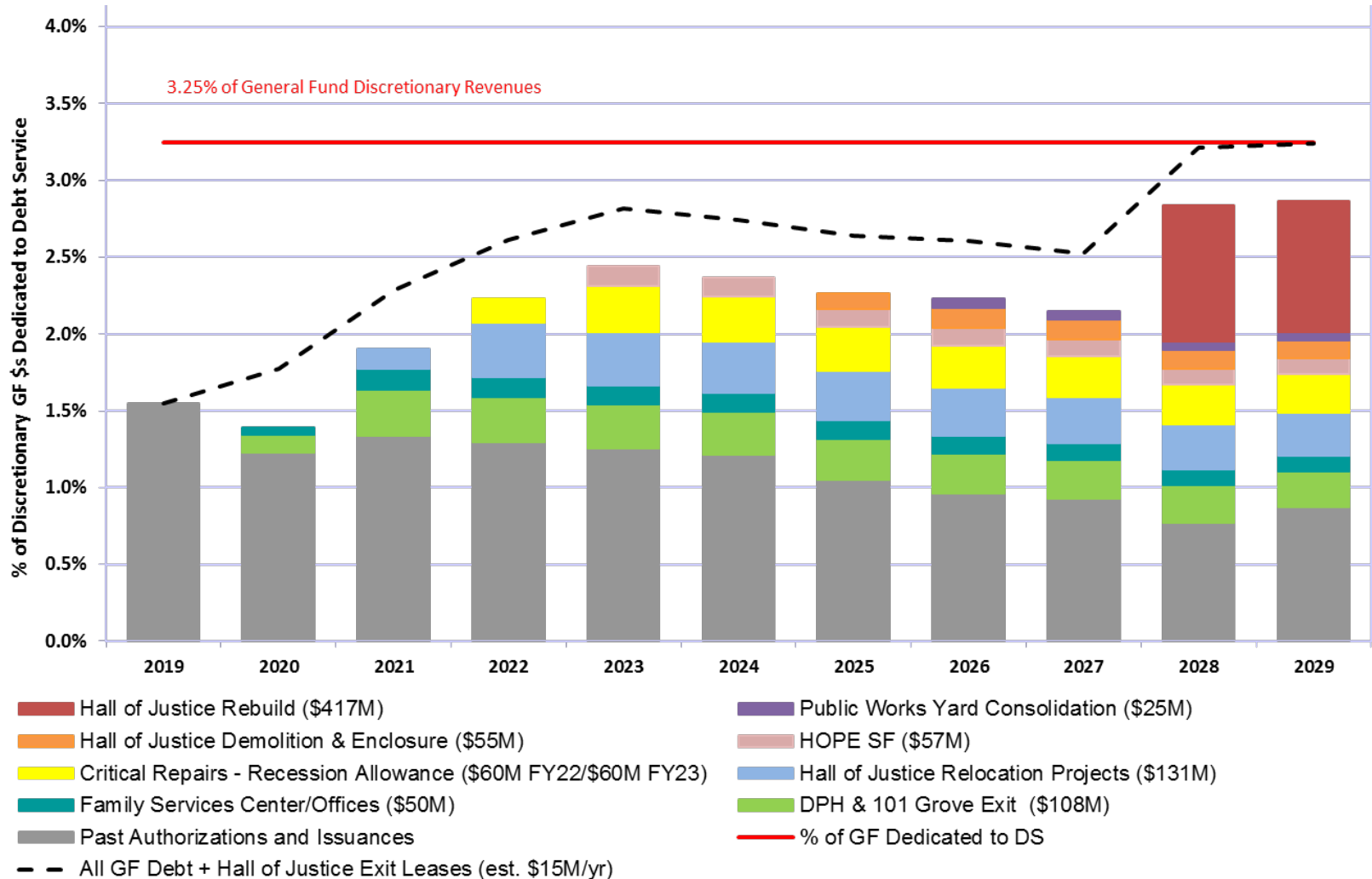
(in \$millions)

Issuance	Proposed Project	Amount
FY2019	Public Health 101 Grove Exit	108
FY2019	HOPE SF Horizontal Infrastructure	57
FY2020	Family Services Center / City Offices	50
FY2020	Hall of Justice Relocation Projects	131
FY2022	Critical Repairs Recession Allowance	60
FY2023	Critical Repairs Recession Allowance	60
FY2025	Hall of Justice Demolition & Enclosure	55
FY2026	Public Works Yards Consolidation	25
FY2028	Hall of Justice Consolidation Plan	417
TOTAL		963

DEBT PROGRAM

General Fund Debt Capacity

13



DEBT PROGRAM

General Obligation (G.O.) Bond Schedule

14

G.O. Bond Debt Program

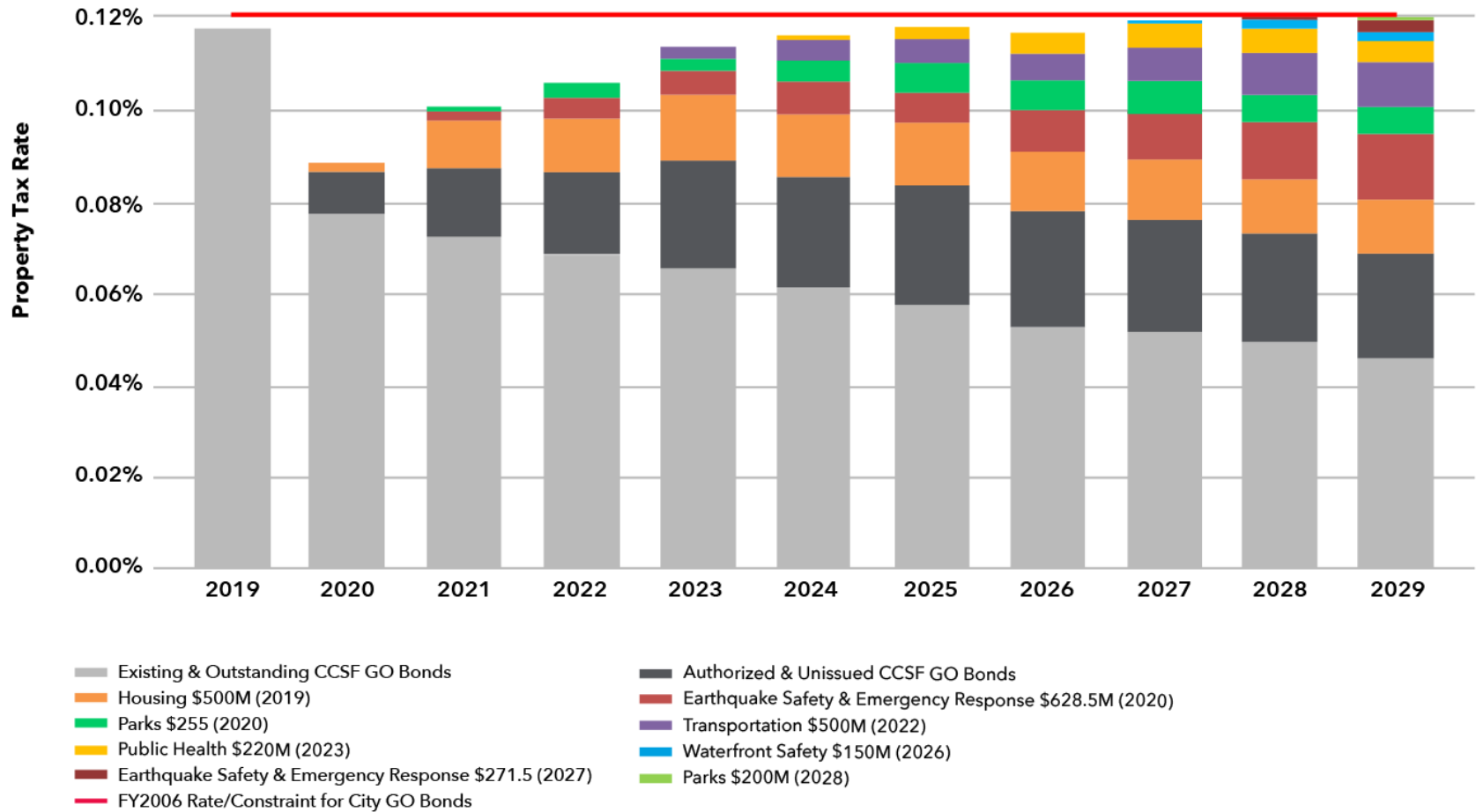
(in \$millions)

Election	Proposed Program	Amount
Nov 2019	Affordable Housing	500
Mar 2020	Earthquake Safety & Emergency Response	628.5
Nov 2020	Parks & Open Space	255
Jun 2022	Transportation	500
Nov 2023	Public Health	220
Nov 2026	Waterfront Safety	150
Nov 2027	Earthquake Safety & Emergency Response	271.5
Nov 2028	Parks & Open Space	200
TOTAL		2,725

DEBT PROGRAM

General Obligation (G.O.) Bond Capacity

15



G.O. Bond Program Historical View

Adjust for Inflation

- Adjusted Dollars (2016)
- Real Dollars

Bond Sponsors

- CCSF Agencies
- Other Local Agencies

Results

- Approved
- Rejected

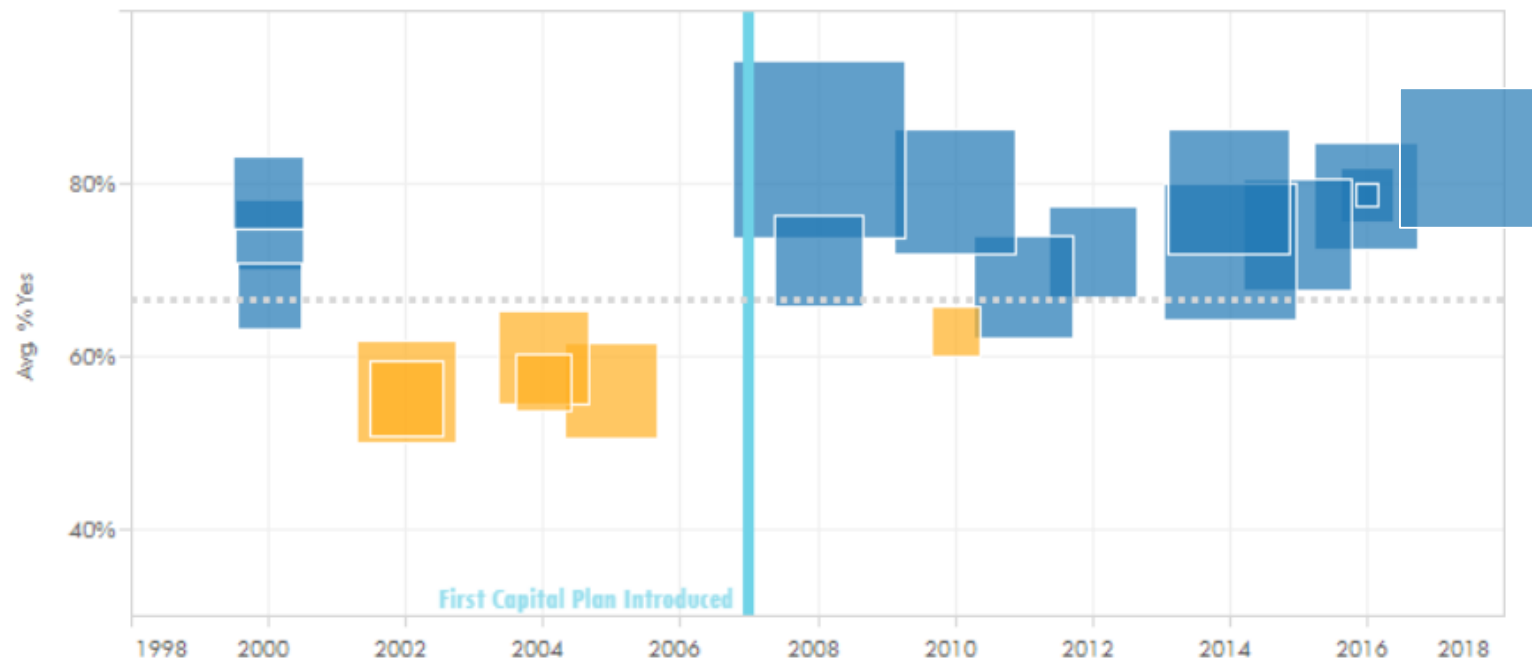
Election Dates (move the sliders to change the data below)

1/1/2000



6/7/2016

Voter Approval and Bond Value by Year



onesanfrancisco.org