



Designing a Green Future for SF

Cyndy Comerford

SAN FRANCISCO

ENVIRONMENT

DEPARTMENT

- 1. Expand Zero Emission Technologies**
- 2. Reduce Life Cycle Carbon Emissions**
- 3. Increase Community Resiliency
through Biodiverse Design**



The “emissions iceberg”



Operational Carbon
Running the building

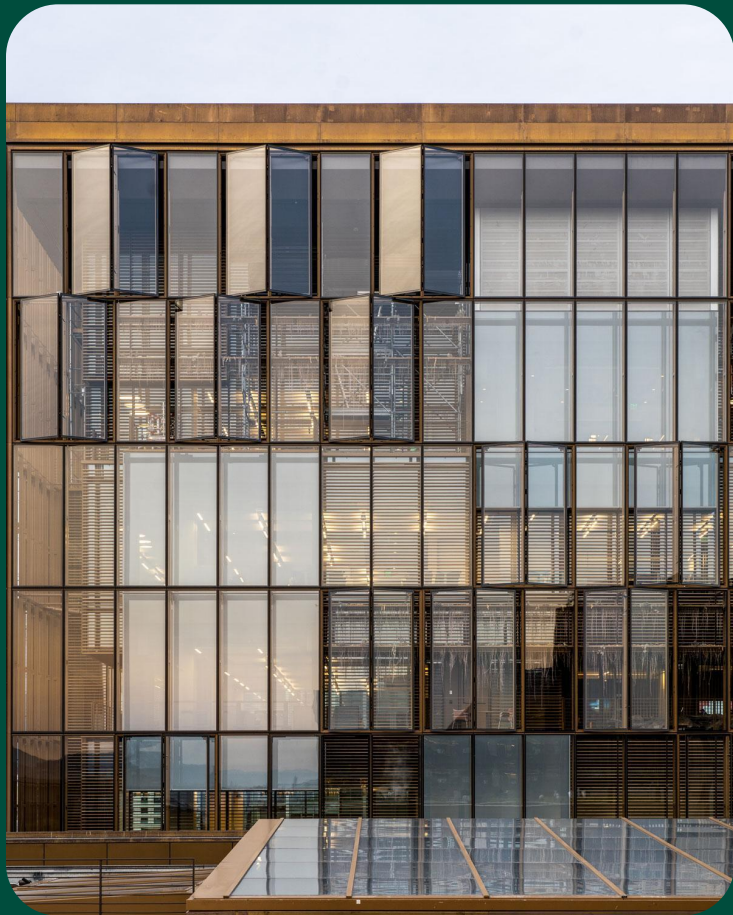
Embodied Carbon

Design,
Constructing &
renovating
the building

The “emissions iceberg”



Expand zero emissions technologies



All-Electric Efficient Design



Battery Storage



Demand Response Technologies

**“The greenest building is one
that’s already built.”**

~Carl Elefante

Thoughtful Deconstruction

SFE



Building Material Reuse

SFE



Design for Disassembly

SFE



Low Embodied Carbon Materials

SFE





Biodiverse Design



Opportunity to design
with nature



Living Roofs

Bird Boxes

Pollinators



Native Plants



Nature Play Spaces

Thank you!

Cyndy Comerford
Climate Program Manager
San Francisco Environment Department
SFEnvironment.org



SAN FRANCISCO
ENVIRONMENT
DEPARTMENT

© 2024

San Francisco Environment Department, All Rights Reserved

The author of this document has secured the necessary permission to use all the images depicted in this presentation. Permission to reuse or repurpose the graphics in this document should not be assumed nor is it transferable for any other use. Please do not reproduce or broadcast any content from this document without written permission from the holder of this copyright.