

# SAN YSIDRO – TIJUANA CROSS BORDER TROLLEY

PANEL PRESENTATION

NOVEMBER 7, 2023 • 12:30 PM

SPUR

Public Programs



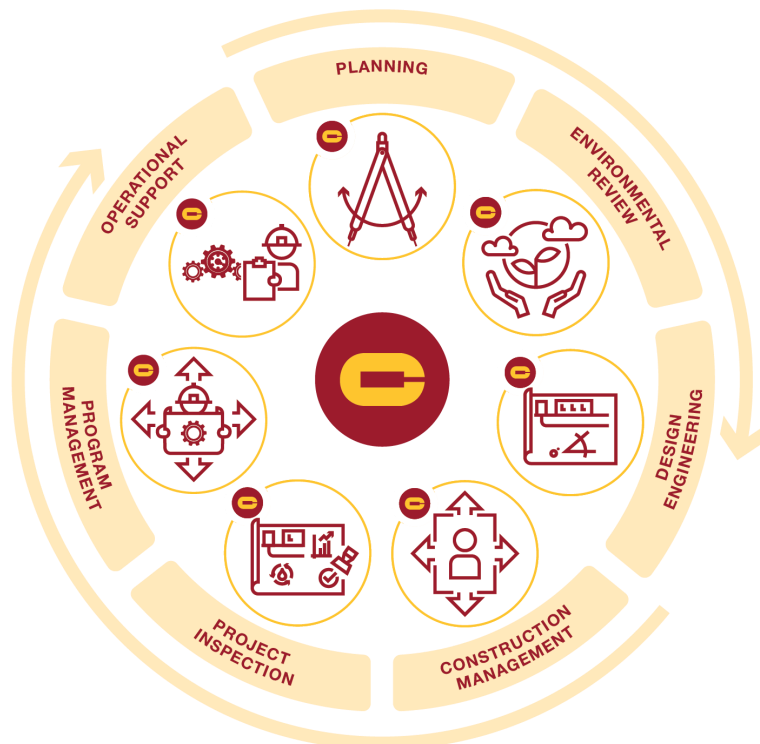
INNOVATIVE | EQUITABLE | BINATIONAL COLLABORATION



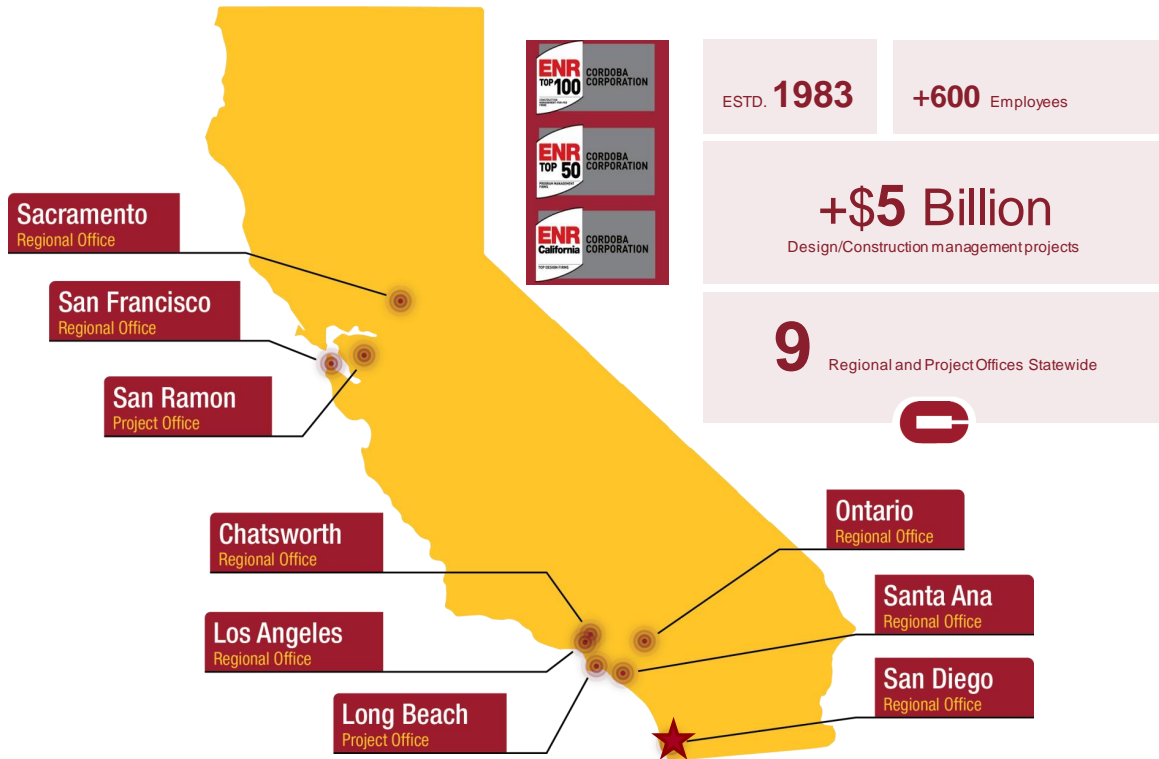
SANDAG

## CORDOBA CORPORATION

**Cordoba Corporation** is a multidisciplinary full-service engineering consulting firm.



# Company Size, Market, and Geography



## CALI BAJA MEGA-REGION BY THE #S

35,000 sq. mi - San Diego / Imperial / 5 Municipalities of B.C., MX

Combined Economy of \$250B and \$70B in Binational Trade

3 major international airports - San Diego, Tijuana and Mexicali

2 two deep-sea commercial ports – SD & Ensenada

3 commercial Ports of Entry, Otay Mesa, Calexico West, and Tecate

Rail connections to the north and east - Union Pacific and BNSF Railway

Roads connecting to Los Angeles, Arizona, Sonora and Baja California Sur

Bi-National Airport Terminal, Cross Border Xpress (CBX)

# SANDAG

## Forum for regional decision making

- Representatives from each of the region's 19 local governments
- Ten advisory members including representatives from Consulate General of Mexico and Southern California Tribal Chairman's Association

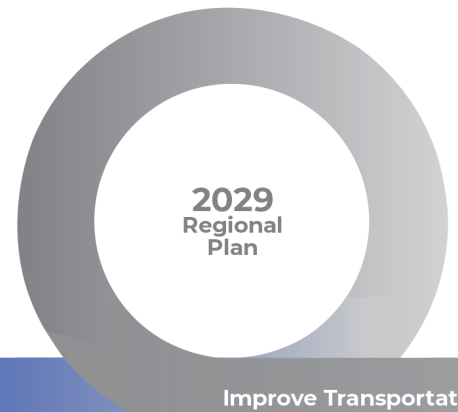


## Our vision for improving how we get around





# Regional Plan Process



## Request for Innovative Concepts

- Jumpstart implementation of the Regional Plan through a collaborative project development process
- Explore public private partnerships and alternative delivery models
- Opportunity to test new technologies



# Timeline

## PHASE 1

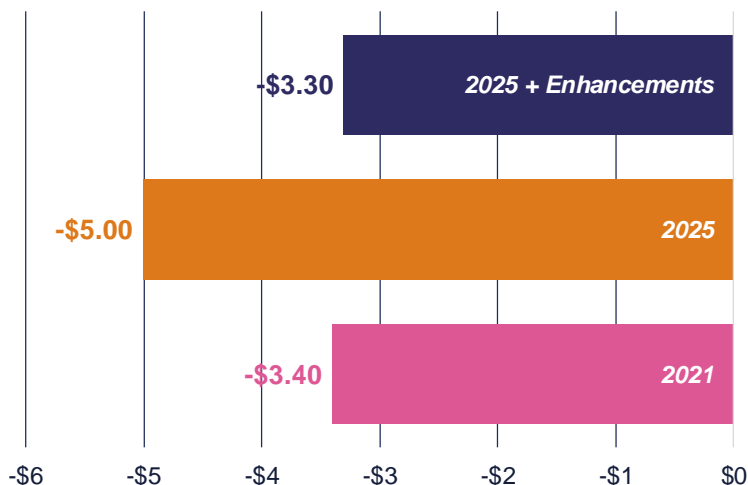
## PHASE 2 (Concept Development)



# Key Transportation Challenge – Border Congestion

Border delays result: average release of **457 metric tons** of CO2 per day and \$3.4 B in lost economic output annually

## Lost economic output in billions of us \$ (2020)

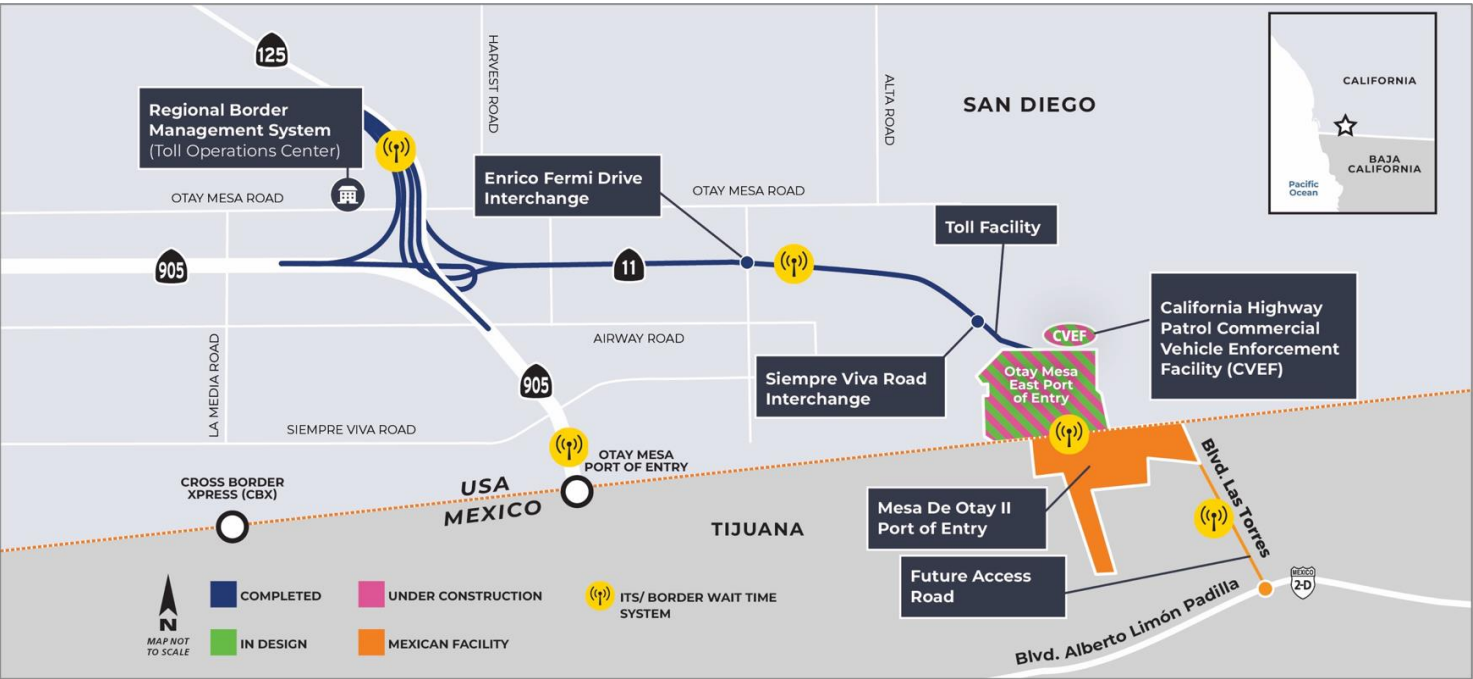




# California-Mexico Border System

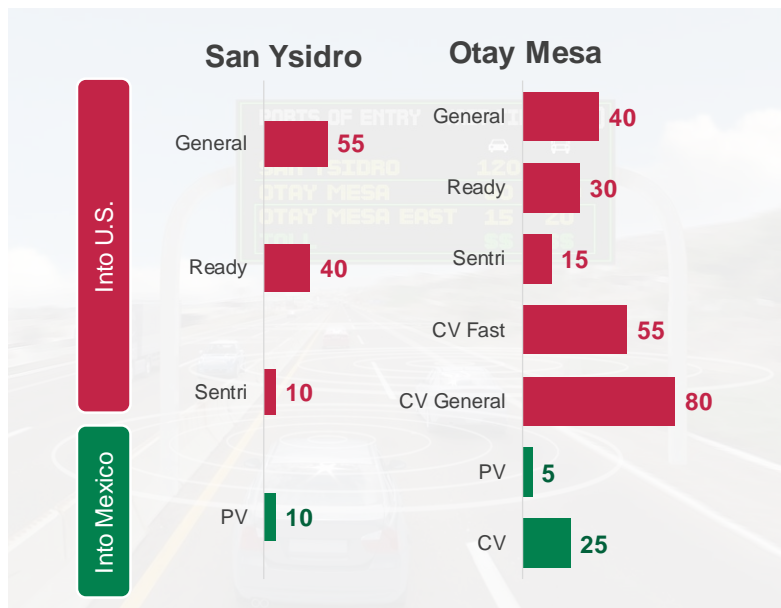
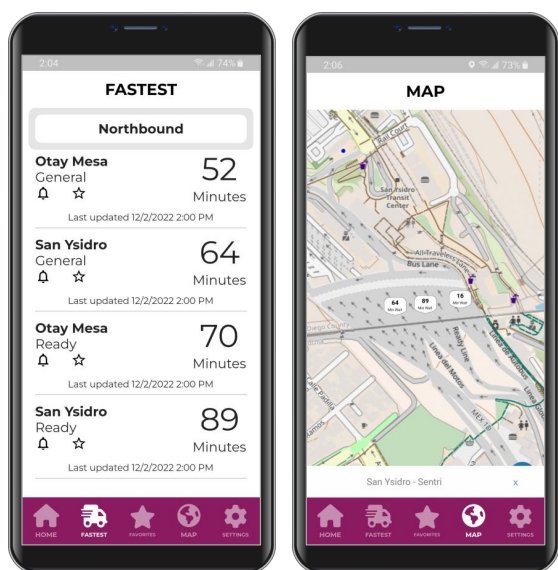


## SR-11/ Otay Mesa East Port of Entry



# Fiber Optic and Border Wait Times System Update

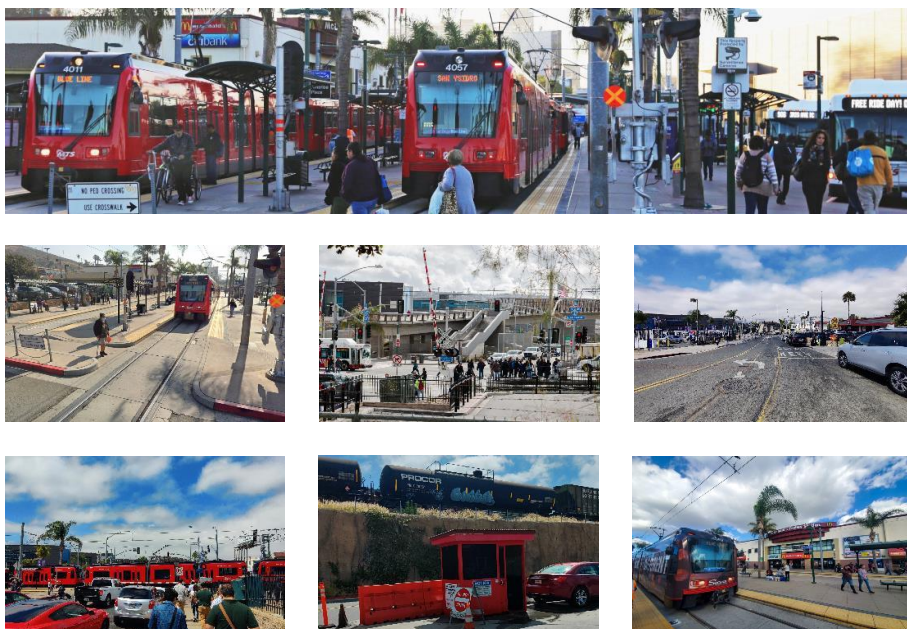
Goal for Otay Mesa East-Mesa de Otay II: Average wait time of 20 minutes



SANDAG | 13

## Challenges Impacting San Ysidro Today

- **Constrained footprint limits capacity** and impairs circulation for transit and other modes
- Various **conflict points** where pedestrians, vehicles, and transit modes converge **impact pedestrian connectivity and safety**
- Configuration of the **space** leads to confusion and is **not optimized** for user experience



SANDAG | 14



# Cross Border Trolley PROJECT NEED



**Busiest International Land Border Crossing in the WORLD**



**7.1 Million residents & Labor Force of 3.8 Million**



**Over 100,000 US Citizens & Permanent Residents Cross Daily at SYPOE**



**Combined Economy of \$250 Billion and \$70 Billion in Binational Trade**



**Idling Vehicles Cause Detrimental GHG emissions – 457 metric tons of CO<sub>2</sub> each day**



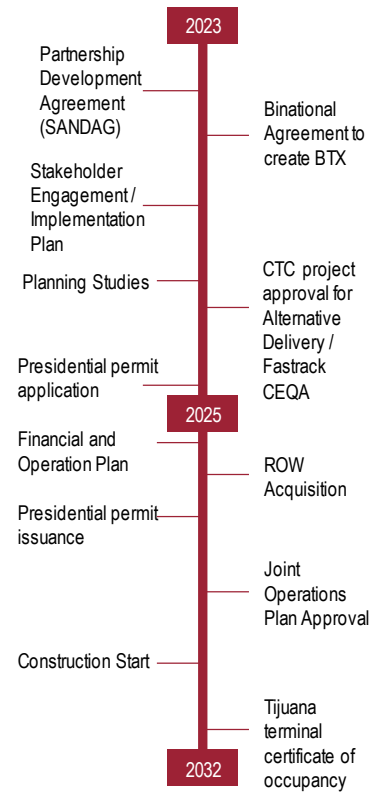
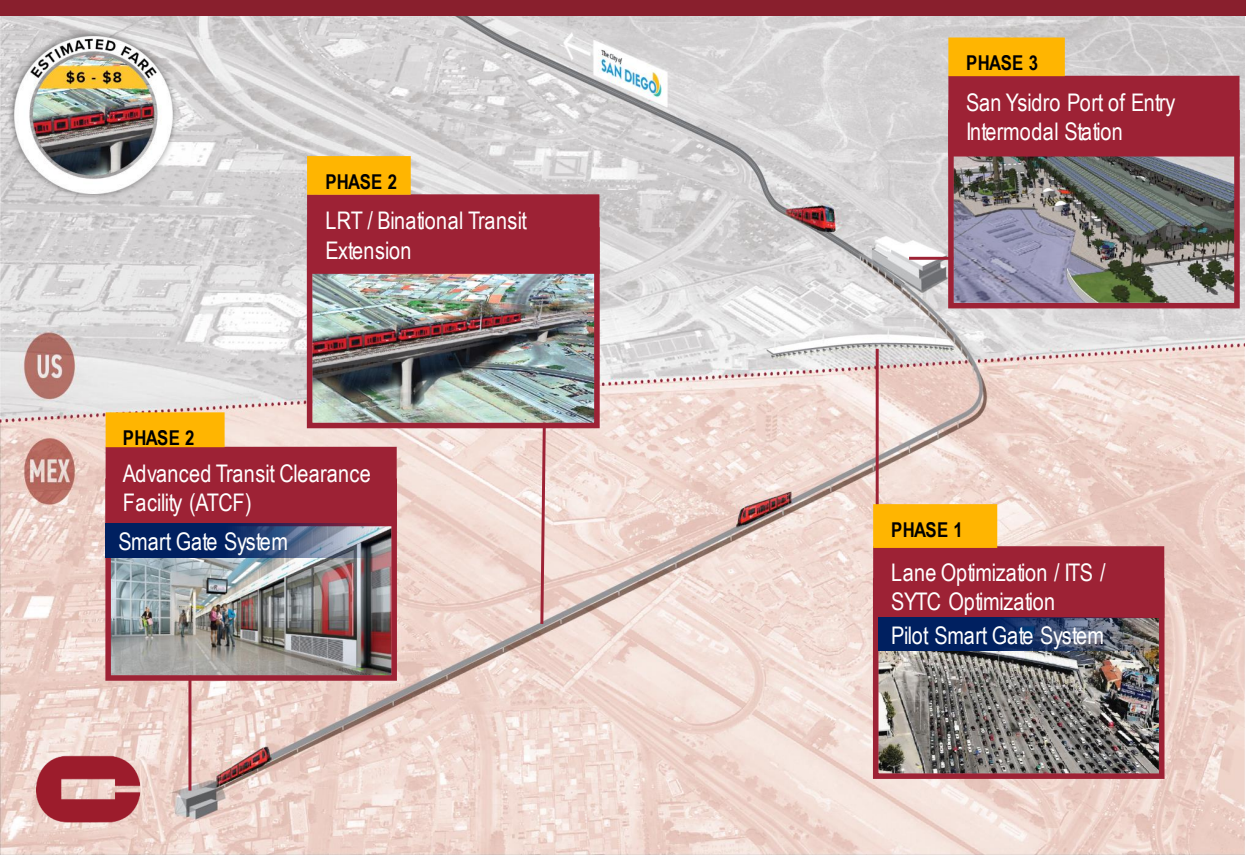
**By 2025 Border Delays will Cost us \$5.07 Billion per year and a Loss of 97,000 Jobs**

## Cali Baja Innovative Mobility Planning





# Project Overview & Milestones



# Binational Stakeholder Engagement & Integrated Governance





## Alternative Delivery

### Capital

- Public – City / State / Federal Grants
- Private Investment
- Commercial Concession - CETRAM
- BANOBRAS / NADBank/ CAF Latin American Development Fund

### M & O

- Value Capture District – Urban Revitalization
- MTS as operator / contractor
- Public / Private Agency Concession
- Fare and Commercial Revenues



Tijuana Terminal with Smart Gate System



San Ysidro Intermodal Station

## NEXT STEPS

2023 – 2025

- **Partnership Agreement Phase 3 RFIC**
- Initiate technical and feasibility studies
- **Binational MOU**
- Finance Plan
- Alternative Delivery Framework
- **Mexico Transition Plan**
  - Cost Benefit Analysis
  - Alternative Analysis
- CEQA/ NEPA/ MIA
- Site Design
- Construction Plan
- Operations Plan
- **Presidential Permit**







# Binational Partnership



## PLAN

ITS and  
Network  
Integration

Binational  
Stakeholder  
Engagement

Model for  
Future  
Binational  
Transit  
Solutions



## DESIGN

Fast Track  
Alternative  
Delivery

Environmental  
Monitoring  
System

Legacy Project



## FINANCE

P3 Finance  
Opportunity

Grant Support

Revenue  
Generating  
Opportunities

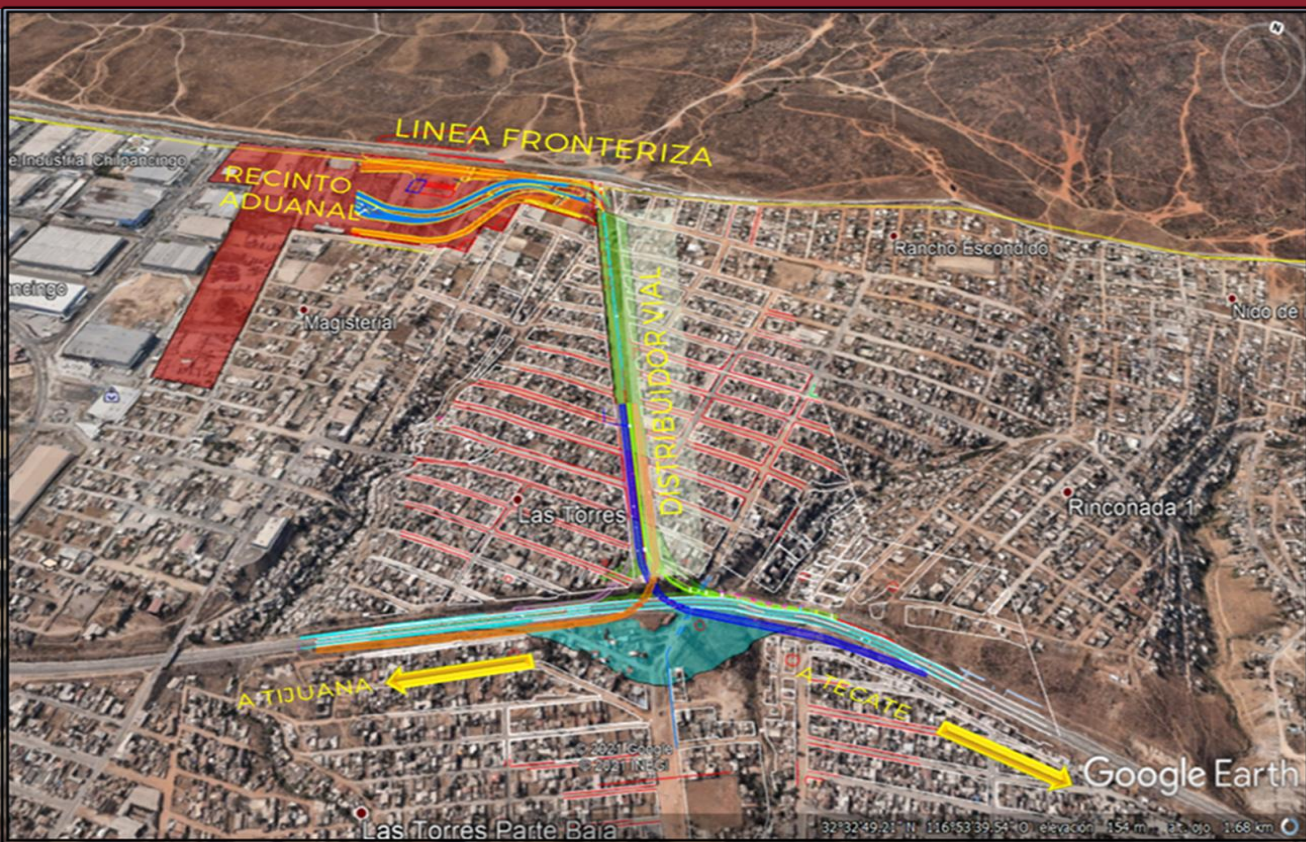
## Cali-Baja: Cross-Border Ferry



The Cross-Border Ferry project aims to connect the ports of Ensenada, Baja California, and San Diego, California. It is part of efforts to promote sustainable transportation by establishing Maritime Highways for efficient transportation between Mexican ports and neighboring countries. The estimated travel time for the ferry is approximately 2 hours and 15 minutes, providing an alternative to current travel times that include border crossings in Tijuana.



## Otay II Border Crossing



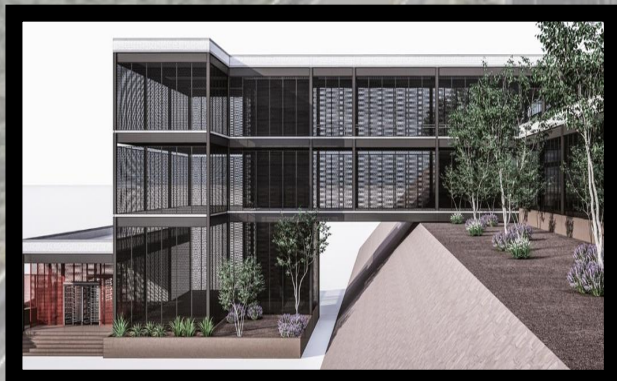
The Otay II Border Crossing project involves the construction of a customs facility and an access highway distributor in Tijuana.

The access highway distributor will connect the Tijuana-Tecate road with the new customs facility, enhancing traffic flow and efficiency.

## Otay II Border Crossing



The customs facility will accommodate both light vehicles and cargo transportation, reducing congestion at existing facilities.





# San Ysidro Express Crossing

The San Ysidro Express Crossing is an express pedestrian crossing designed to address long wait times at the border. It aims to provide predictable crossing times and enable people to plan their activities accordingly.

Expert opinions and consultations with relevant authorities have been conducted to determine the stages and requirements for developing this project.

SANDAG

Connector Service Request for Innovative Concepts – March 23, 2022



## STRONGER TOGETHER

- Mitigate Congestion
- Alternative Delivery
- Protect Public Health
- Strengthen National Security
- Promote Environmental Justice
- Deliver Comprehensive ITS Solutions
- Build North American Competitiveness
- Unite Binational Leadership for Project Approvals



CORDOBA CORPORATION

**SANDAG**

The City of  
**SAN DIEGO**



GOBIERNO DE  
**MÉXICO**



**BAJA  
CALIFORNIA**  
GOBIERNO DEL ESTADO



CALIFORNIA



Q&A  
CORDOBACORP.COM

## CORDOBA CONTACTS

### ***Southern California***

Jacqueline Reynoso  
Project Director, RFIC  
[Jacqueline.Reynoso@cordobacorp.com](mailto:Jacqueline.Reynoso@cordobacorp.com)  
(619) 509-5248

### ***Northern California***

Irene Olsen  
Project Manager  
[Irene.olsen@cordobacorp.com](mailto:Irene.olsen@cordobacorp.com)  
(510) 388-0701

### **SANDAG**

Danielle Kochman  
Manager of Strategic Partnerships  
[Danielle.kochman@sandag.org](mailto:Danielle.kochman@sandag.org)

### **STATE OF BAJA CALIFORNIA**

Kurt Honold  
Secretary of Economy & Innovation  
[khonold@baja.gob.mx](mailto:khonold@baja.gob.mx)