



# From Frontline to Front and Center: Prioritizing Equity in Climate Resilience



SPUR  
October 11, 2023



Partnership in Action



# Land Acknowledgement

The San Francisco Bay is the unceded ancestral territory of many Indigenous people, including the Him-R^n Ohlone Jalquin, Saclan Tribe, the Lisjan Ohlone, the Karkin, Muwékma, Ramaytush, Tamien, and Yokuts Ohlone, the Coast and Bay Miwok, the Patwin, and the Amah Mutsun Tribal Band. The broader San Francisco Estuary is also the homeland of the Plains Miwok, Wappo, Wintun, and Nisenan people.

We benefit from living and working on their traditional homeland. We wish to pay our respects by acknowledging the ancestors, elders, and relatives of these Tribal communities and by affirming their sovereign rights as First Peoples.



# Panelists

**Belinda Magallon**, Water Justice Fellow - Nuestra Casa

**Danielle Mieler**, Sustainability and Resilience Manager - City of Alameda

**Heidi Nutters**, Senior Environmental Planner - San Francisco Estuary Partnership

**Phoenix Armenta**, Senior Manager for Climate Equity and Community Engagement - Bay Conservation and Development Commission

**Maria Katticaran**, Urban Designer/Community Planner – HDR/Oakland Shoreline Leadership Academy



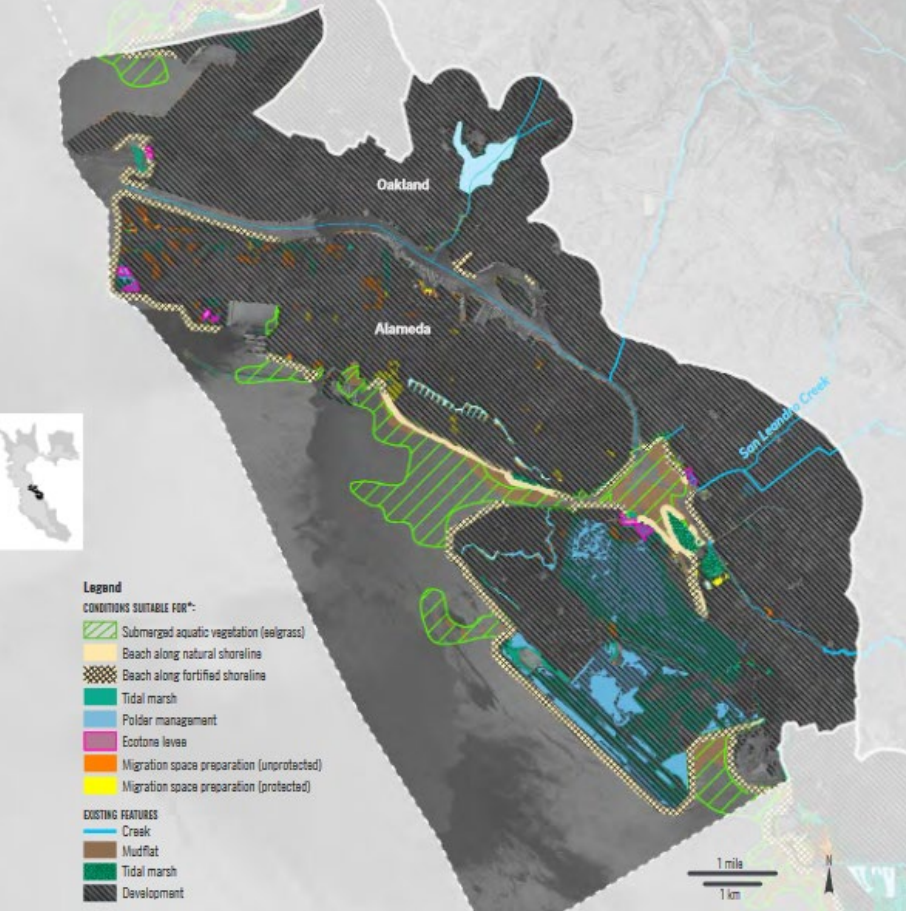
Nuestra Casa

## Water Justice at Nuestra Casa

- DACTIP Tap Water Testing
- Community Water Task Force
- Water Filter Distribution
- Ongoing community research on groundwater and tap water in East Palo Alto







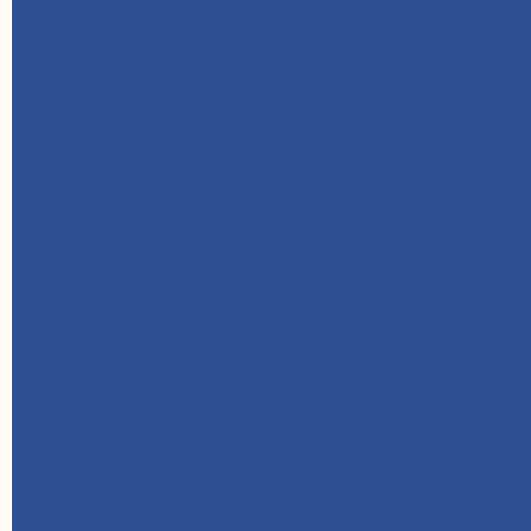
[alamedaca.gov/AdaptationWorkingGroup](http://alamedaca.gov/AdaptationWorkingGroup)



San Leandro Bay  
 Oakland-Alameda Estuary  
 Adaptation Working Group

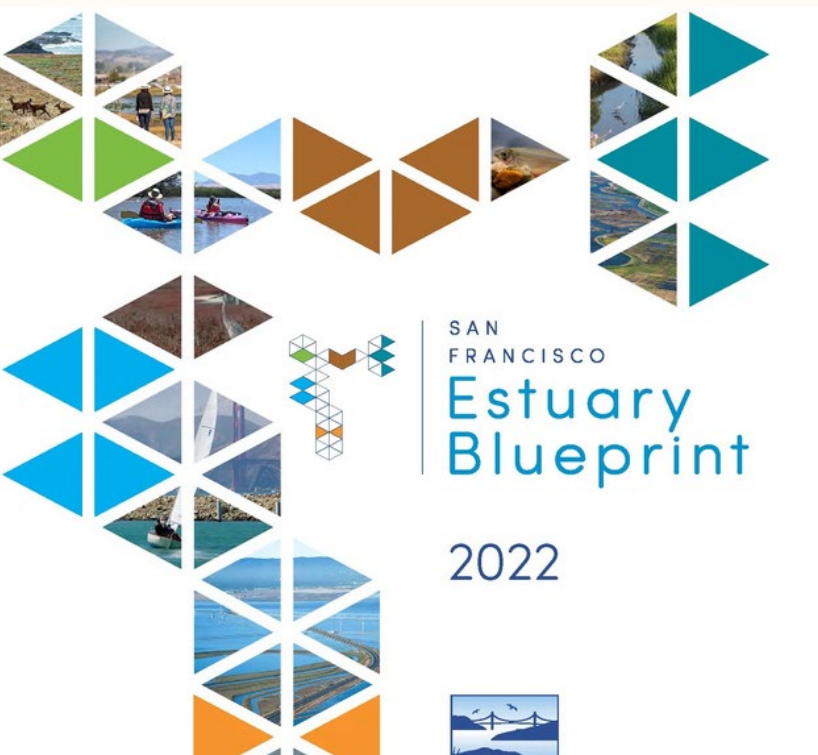






# Partnership in Action

Nature-based Adaptation  
Local to Regional  
Equity Focused - We are  
learning and listening



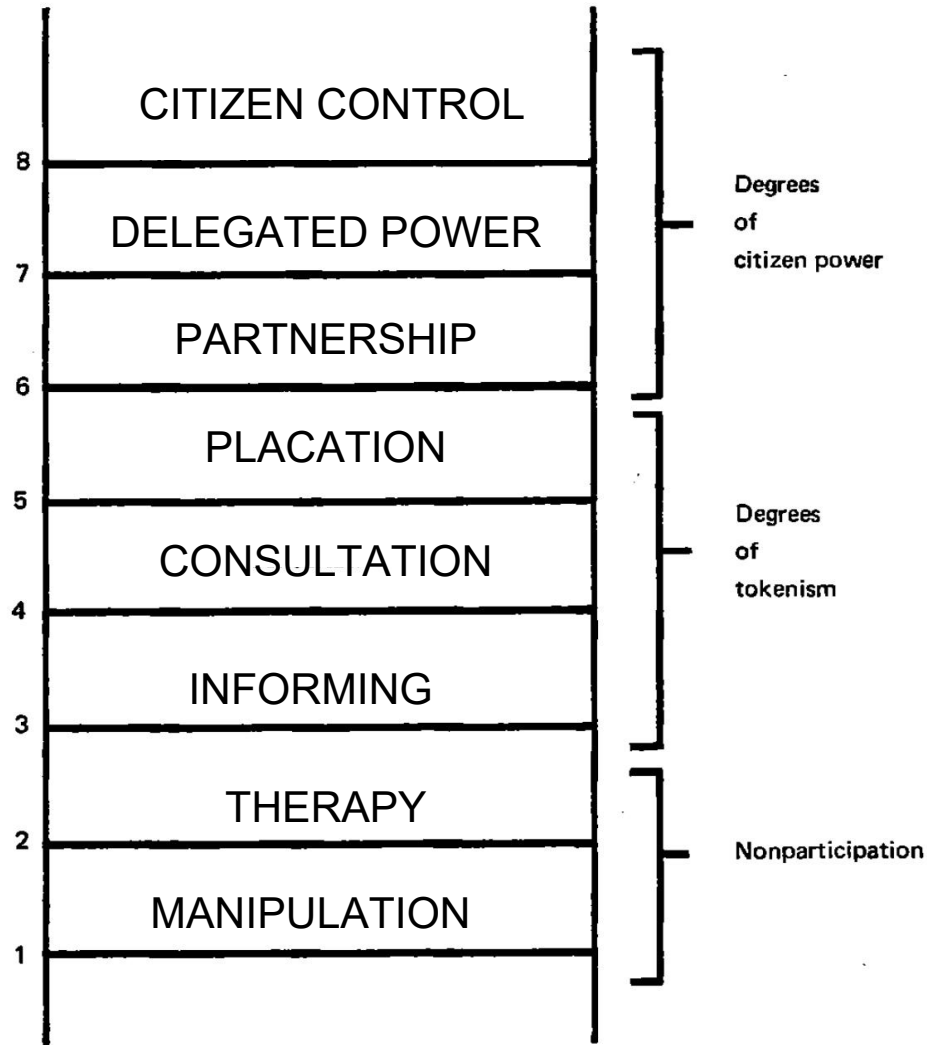


# Oakland Shoreline Leadership Academy

SPUR  
October 11, 2023



## LADDER OF CITIZEN PARTICIPATION



Source: Sherry Arnstein

## OAKLAND SHORELINE LEADERSHIP ACADEMY FRAMEWORK

