

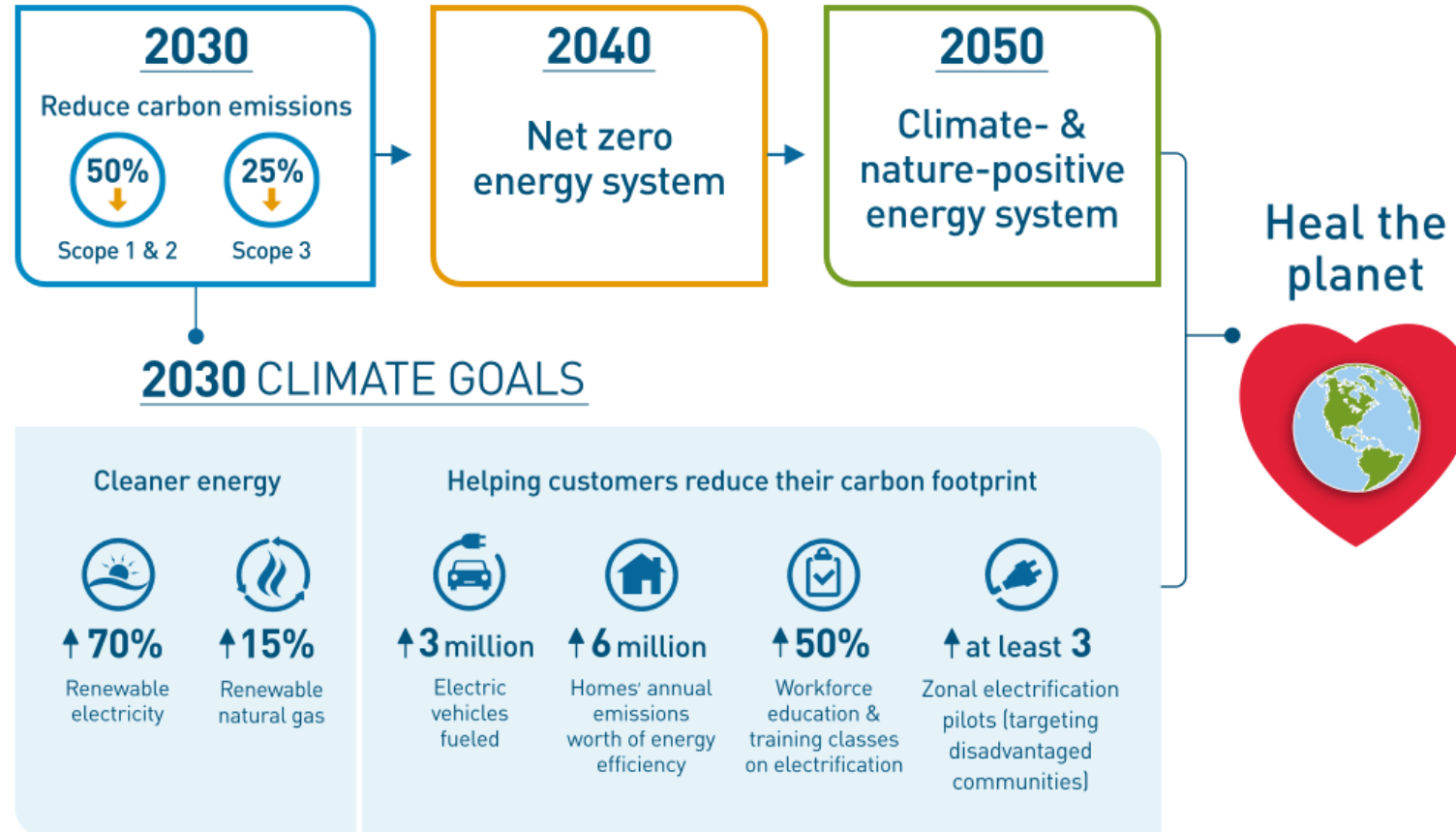
Keeping Energy Bills Affordable while Decarbonizing



Rachel Kuykendall



PG&E's Climate Goals



Notes:

Scope 1: *Direct* emissions from PG&E's operations.

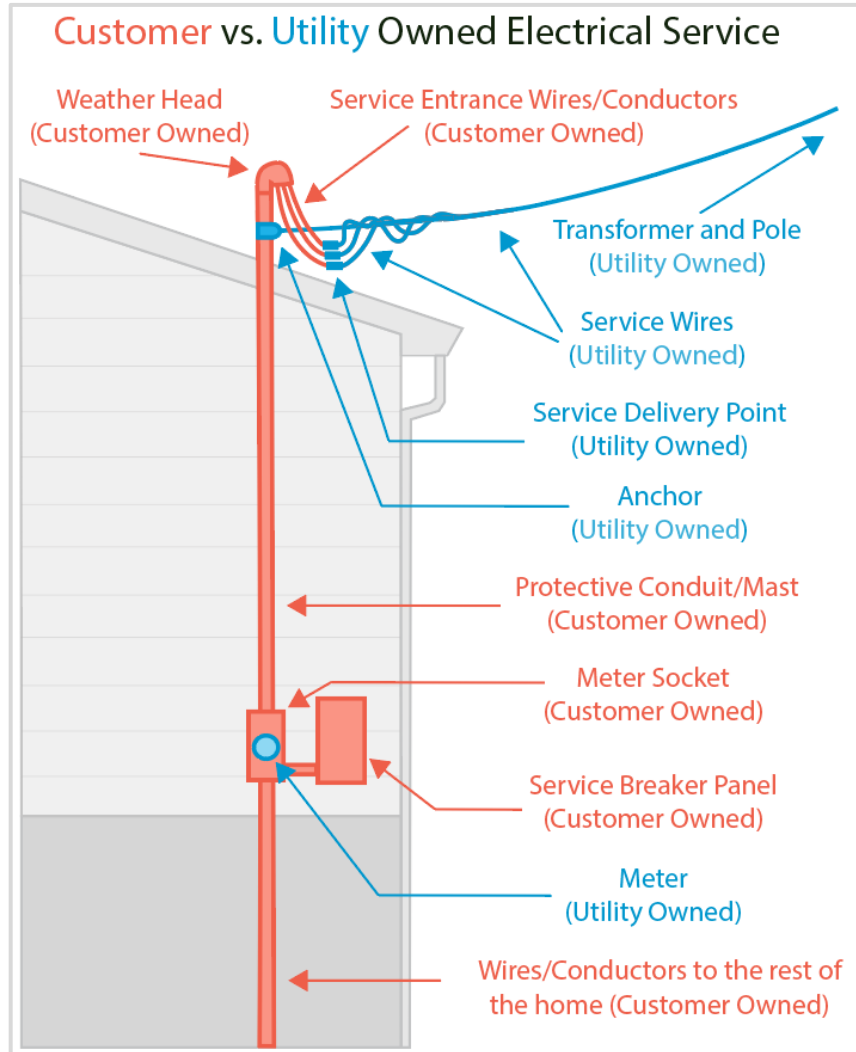
Scope 2: *Indirect* emissions from facility electricity use and electric line losses.

Scope 3: Emissions resulting from *value chain activities* not owned or controlled by PG&E but that can be indirectly impacted by PG&E actions.

"Scope 4": An emerging term for categorizing emission reductions enabled by a company. PG&E can make a significant contribution by enabling these emission reductions in our service area.



Electric Panel and Service Upgrades



“Front-of-the-Meter” Costs

- PG&E pays \$3,225 in electric line allowances. Any amount beyond this is your responsibility.

“Behind-the-Meter” Costs

- You are responsible for all costs, though incentives and financing may be available.

Apply online at yourprojects-pge.com or speak to a representative at 1-877-743-7782.



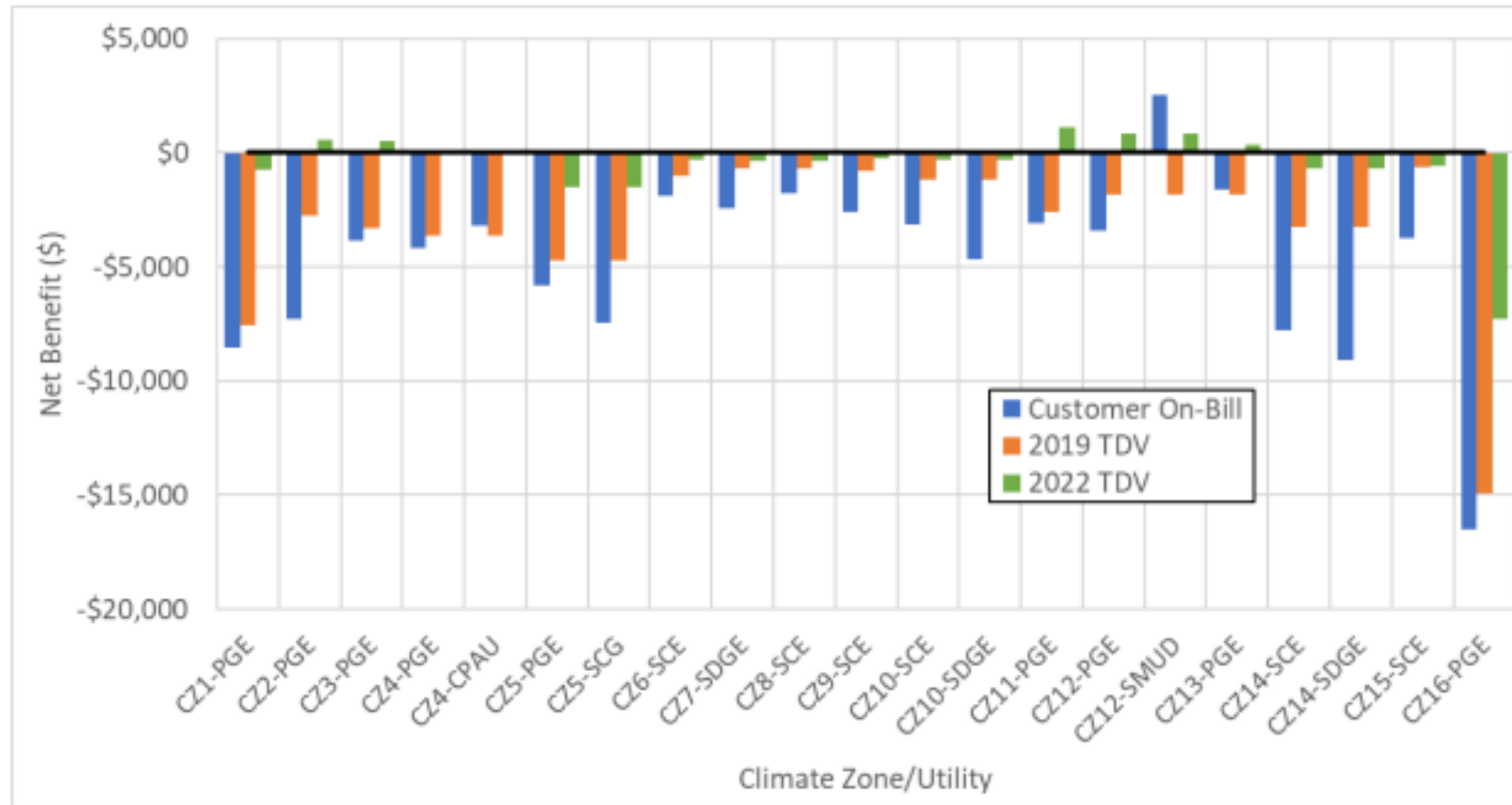
Disconnecting Gas Service



- By disconnecting gas service, you avoid the daily minimum charge to remain connected to the gas system.
- Apply online at yourprojects-pge.com or speak to a representative at 1-877-743-7782.
- If you've had gas service for more than 10 years, discontinuing gas service has no cost.

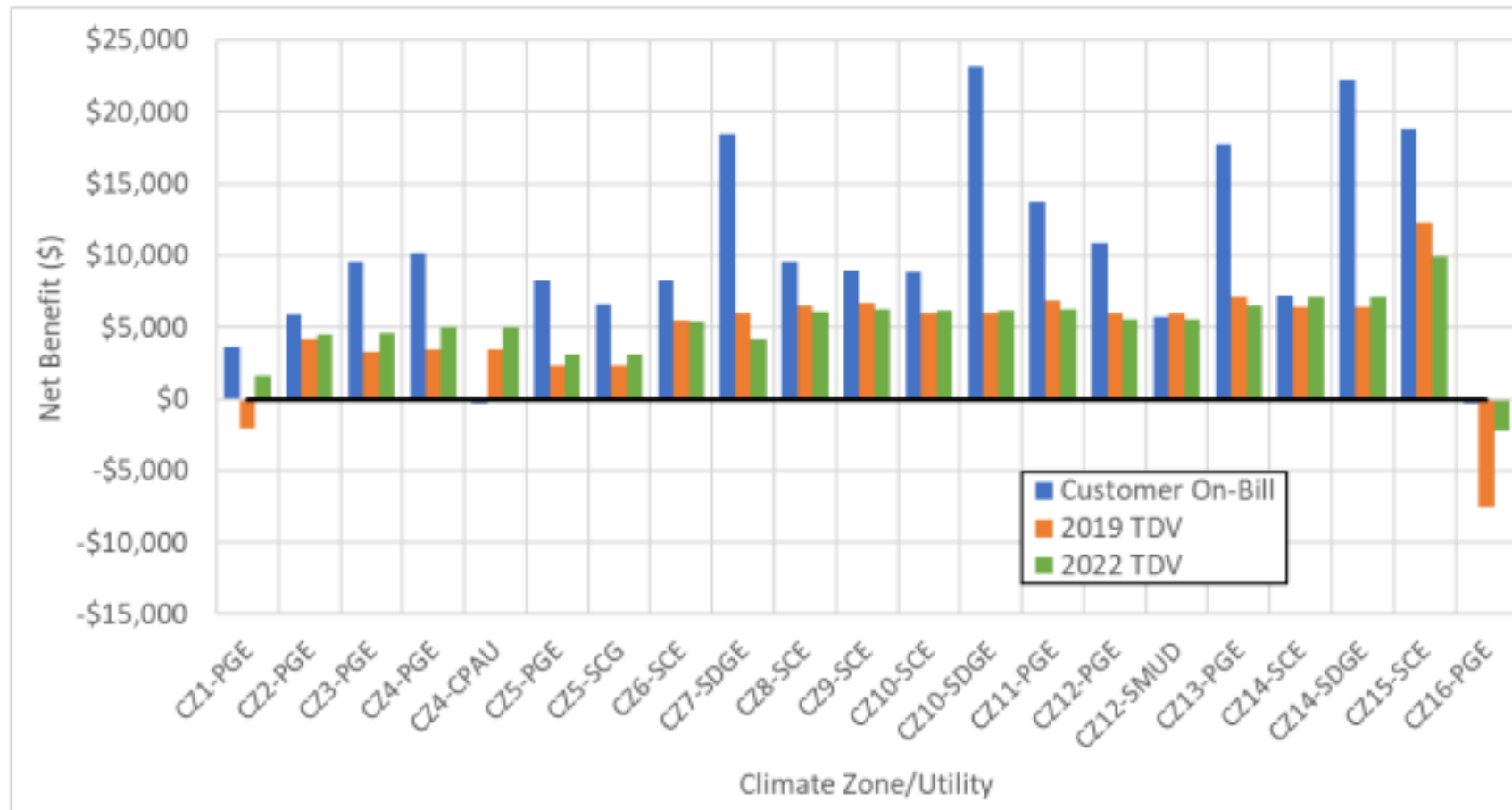


Cost Effectiveness – Heat Pumps for Space Heating





Cost Effectiveness – Heat Pumps for Space Heating





Cost Effectiveness – Heat Pump Water Heater

Takeaways:

- 1 After a Basic Use customer adopts HPWH, PG&E's approved electrification rate (E-ELEC) is a better choice than the default TOU rate (E-TOU-C), as E-ELEC provides lower electric bill compared to E-TOU-C.
- 2 Both CARE and Non-CARE Basic Use customers are estimated to see annual net bill savings on their combined gas and electric bills when they switch.
- 3 For a customer who wants to up-size the water heater when switching to HPWH, she can still obtain net bill savings.

	50-gal to 50-gal Like-for-like Tank Size		50-gal to 80-gal Like-for-like FHR 3	
Gas	Non-CARE	CARE	Non-CARE	CARE
Gas Rate Schedule	G1	G1L	G1	G1L
Gas Annual Usage	462	394	462	394
Gas Bill	\$761	\$495	\$761	\$495
Gas Water Heater Usage Saved	175	175	175	175
Gas Bill (w/o Water Heater)	\$443	\$264	\$443	\$264
Gas Bill Saving	\$318	\$231	\$318	\$231
Electric	Non-CARE	CARE	Non-CARE	CARE
Electric Rate Schedule (Before)	E-TOU-C	E-TOU-C-L	E-TOU-C	E-TOU-C-L
Electric Rate Schedule (After, Optimal)	E-ELEC	E-ELEC-L	E-ELEC	E-ELEC-L
Electric Annual Usage (Before)	6163	6566	6163	6566
Electric Bill (Before)	\$1,699	\$1,182	\$1,699	\$1,182
HPWH Usage	1320	1320	1298	1298
Electric Bill (add HPWH)	\$1,997	\$1,382	\$1,992	\$1,379
Electric Bill Increase	\$298	\$200	\$293	\$197
Annual Net Bill Impact	-\$20	-\$31	-\$25	-\$34



Rate Options – Electric Home and Increased Baseline

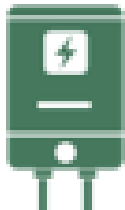
What is Electric Home (E-ELEC)?

It is a new time-of-use rate plan to support home electrification.

To qualify for this rate plan you **must own one or more** of the following electric technologies:

- Electric vehicle (EV)
- Battery storage
- Electric heat pump for water heating or space heating/cooling

You do not need to be all-electric to qualify for this rate plan



It includes a \$15 per month **Base Services Charge** which lowers the charges per unit of energy (kWh), on average, compared to other rate plans.

Households that use large amounts of electricity and can shift usage to lower priced times of day may benefit the most on this rate plan.



PG&E Resources and Incentives

Incentive Programs and Financing

- California Energy Smart Homes offers incentives for retrofits that remove all gas from the home.
- WatterSaver demand response program for heat pump water heaters.
- Direct install (Energy Savings Assistance) and Financing (Go Green Financing)

Additional Customer Support

- Electrification guidebook and website at pge.com/electrification.
- Free Induction Cooktop Lending Program (residential) and equipment demonstrations (non-residential)



California Energy Smart Homes
Incentives for new construction
and retrofit projects

PG&E Induction Cooktop Loaner Program
Try induction cooking at home! Borrow a
unit for 2 weeks at no-cost.



Questions?

Rachel Kuykendall

rachel.kuykendall@pge.com

