

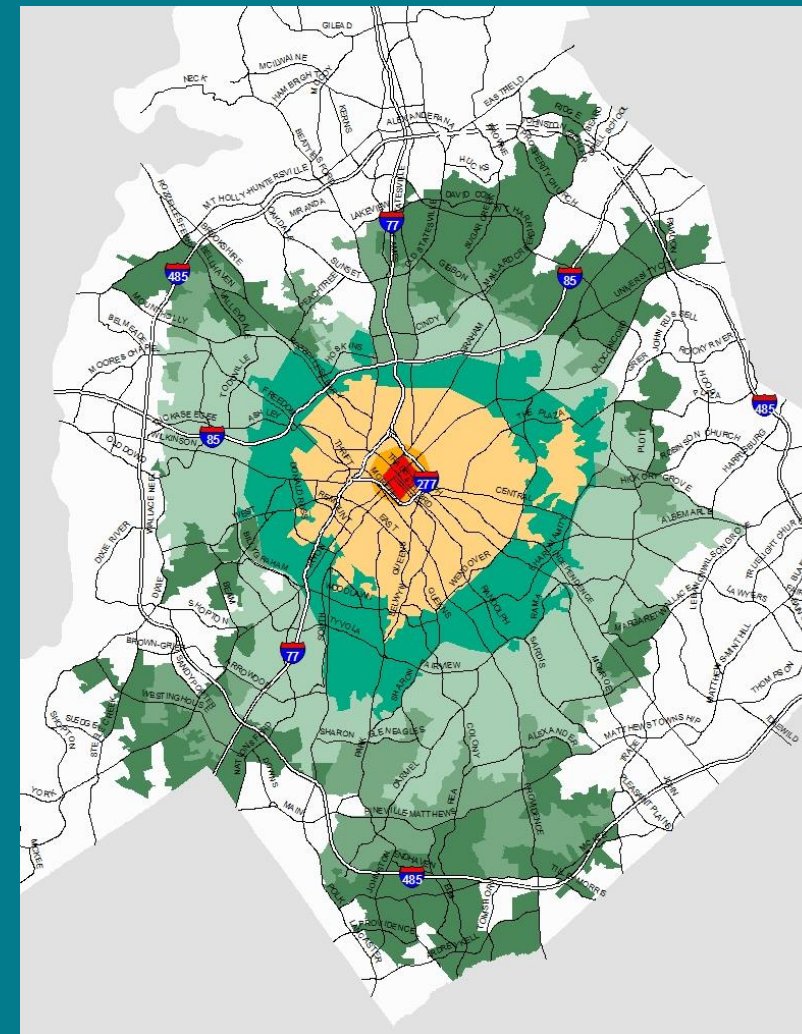
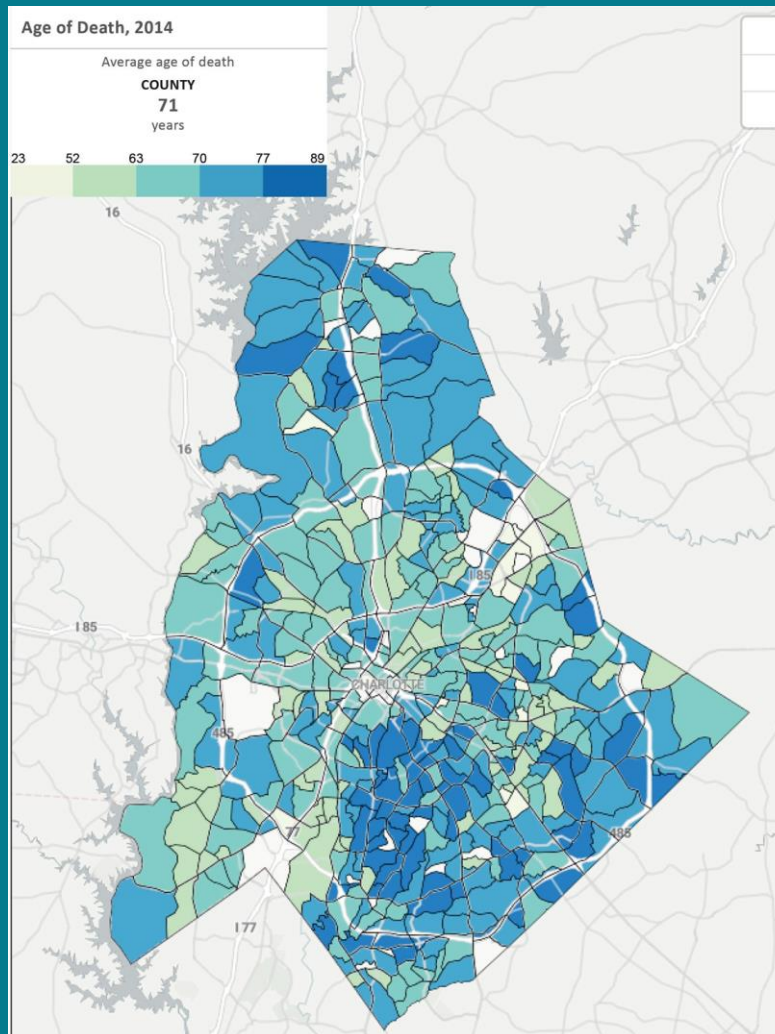
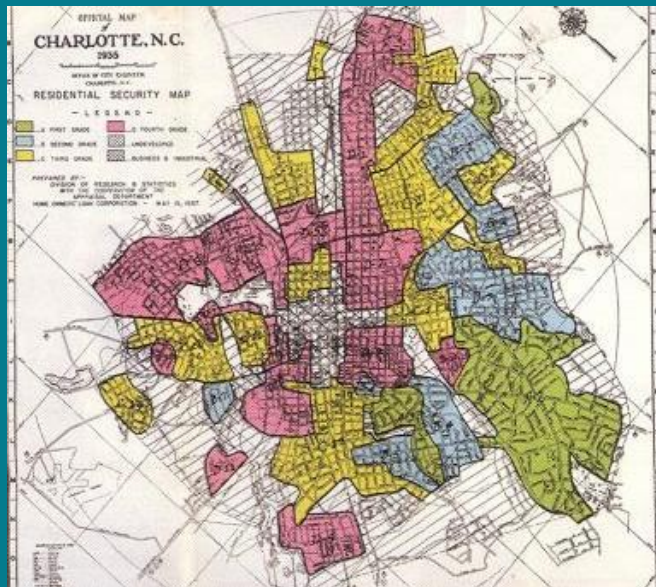
Planning for the Future:

Frameworks for More Equitable and Complete Communities

ALYSIA DAVIS OSBORNE, AICP
CATHERINE MAHONEY, AICP

IMPACTS OF PAST GROWTH POLICIES

Racial/Economic Segregation & Suburban Sprawl



Policy Guidance for Growth & Development

Equity & 10-Minute Neighborhoods



“Create Equitable & Complete Communities”



“Map Equitable & Complete Communities”

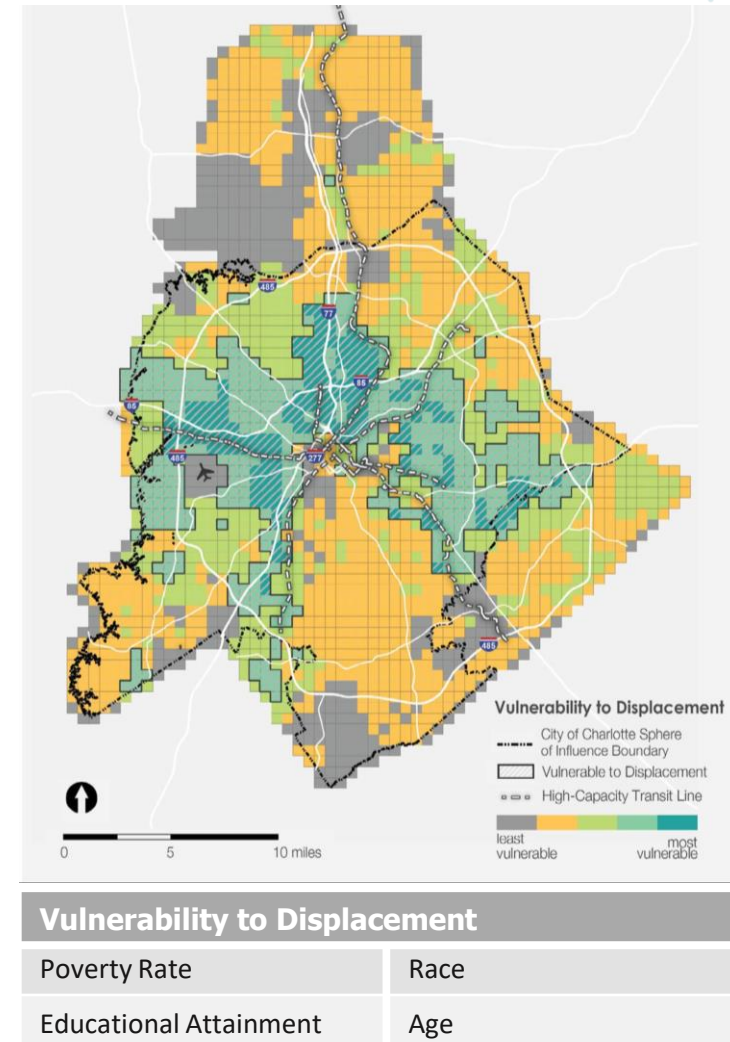


“Support Equitable & Complete Communities”

Equitable Growth Framework

- A system for measuring equity
- 4 Metrics, 1 Overlay*, 27 Measures:
 1. Access to Essential Amenities, Goods, and Services
 2. Access to Housing Opportunity
 3. Access to Employment Opportunity
 4. Environmental Justice

* Vulnerability to Displacement



Place Types

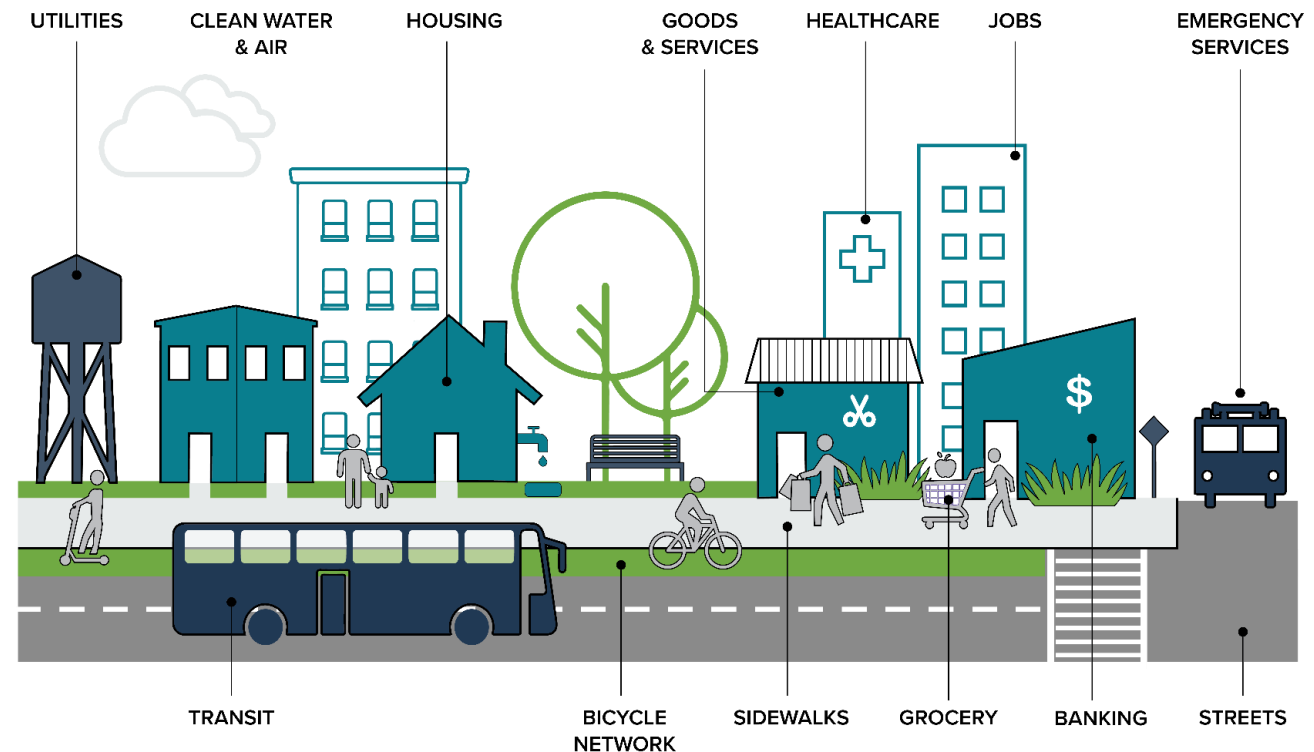
- ▷ They are not zoning districts
- ▷ New classification system to organize patterns of development
- ▷ More holistic and comprehensive than current system

Future Land Use

- Land Use
- Density

Place Types

- Mix of Land Uses
- Proportions of Land Use
- Building Form & Design
- Mobility
- Open Space



- Key to creating **Equitable & Complete Communities**

10 People-Centered Plan Goals

- 01 10-MINUTE NEIGHBORHOODS
- 02 NEIGHBORHOOD DIVERSITY & INCLUSION
- 03 HOUSING ACCESS FOR ALL
- 04 TRANSIT- & TRAIL-ORIENTED DEVELOPMENT
- 05 SAFE & EQUITABLE MOBILITY
- 06 HEALTHY, SAFE, & ACTIVE COMMUNITIES
- 07 INTEGRATED NATURAL & BUILT ENVIRONMENTS
- 08 DIVERSE & RESILIENT ECONOMIC OPPORTUNITY
- 09 RETAIN OUR IDENTITY & CHARM
- 10 FISCALLY RESPONSIBLE

ELEMENTS OF A 10-MINUTE NEIGHBORHOOD

 **1/2 MILE**



10 MINUTE WALK



1,100 STEPS

| | |
|---|------------------------------|
|  | FRESH, HEALTHY FOOD |
|  | HEALTHCARE SERVICES |
|  | BANKS + CREDIT UNIONS |
|  | ACCESS TO EMPLOYMENT |

JOBS + SERVICES

| | |
|---|------------------------------|
|  | PUBLIC TRANSPORTATION |
|  | SAFE BICYCLING ROUTES |
|  | WALKABILITY |
|  | GREENWAYS |

TRANSPORTATION

| | |
|---|------------------------------|
|  | PARKS + PLAYGROUNDS |
|  | PLAZAS + PUBLIC SPACE |
|  | TRAILS |
|  | COMMUNITY GARDENS |

PARKS + OPEN SPACE

| | |
|---|--------------------------|
|  | SCHOOLS, ETC. |
|  | LIBRARIES |
|  | SENIOR CENTERS |
|  | COMMUNITY CENTERS |

LIVING + LEARNING

COMMUNITY AREA PLANNING (CAP)

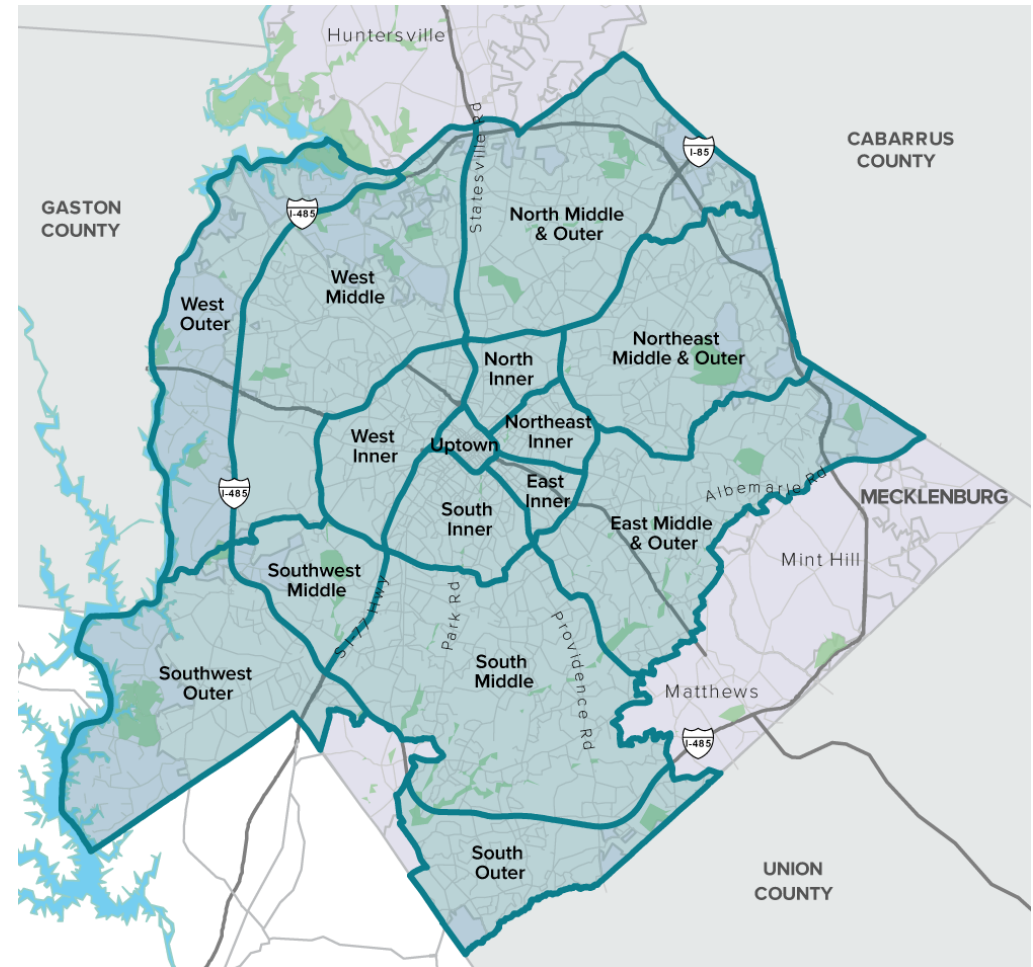
Purpose: Refine and provide **community-level guidance** for growth + development (including places, mobility, open space, capital facilities, community facilities & amenities)

Objective: Ensure future growth addresses the community's needs for better access to housing choices, employment opportunities, daily goods/services and reduces environmental impacts

Approach: Equitable + Inclusive

- Citywide effort
- Larger planning geographies
- Robust engagement

Community Area Planning Geographies



VISIT OUR WEBSITE



cltfuture2040.com

