



Thrive RISE





Thrive is a network of 200+ nonprofit organizations, government entities, foundations, businesses, and community leaders with a shared commitment to strengthening the nonprofit sector, thereby improving the quality of life in San Mateo County.

We focus on:

- **Nonprofit Capacity Building**
- **Policy & Advocacy**
- **Community Resilience**



www.thrivealliance.org

Hazard Exposure in San Mateo County

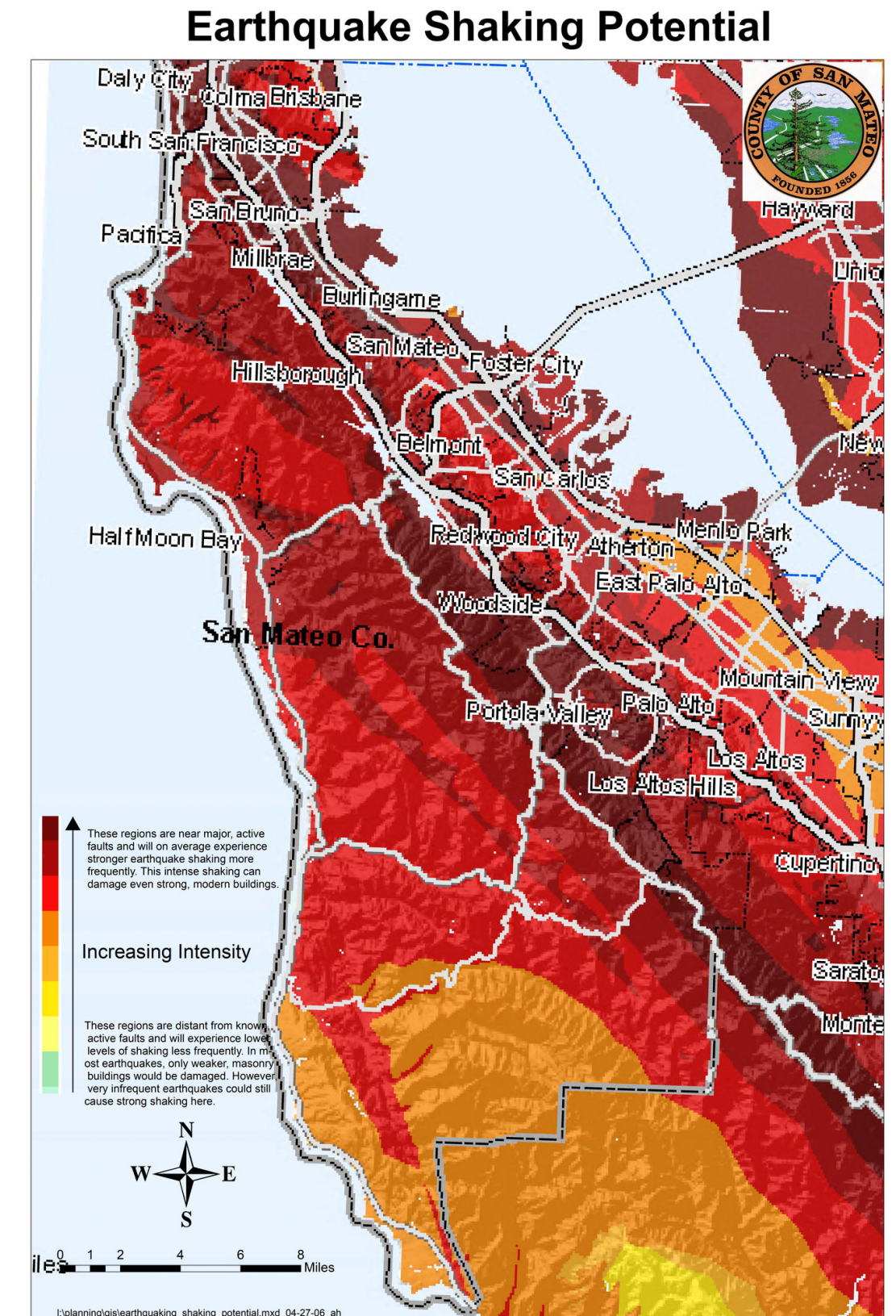
- Earthquake
- Flood (Coastal, fluvial, pluvial, dam failure)
- Wildfire and poor air quality
- Liquefaction
- Landslide/Erosion
- Extreme temperatures
- Tsunami
- Social hazards (violence, poverty, etc.)



SF Gate



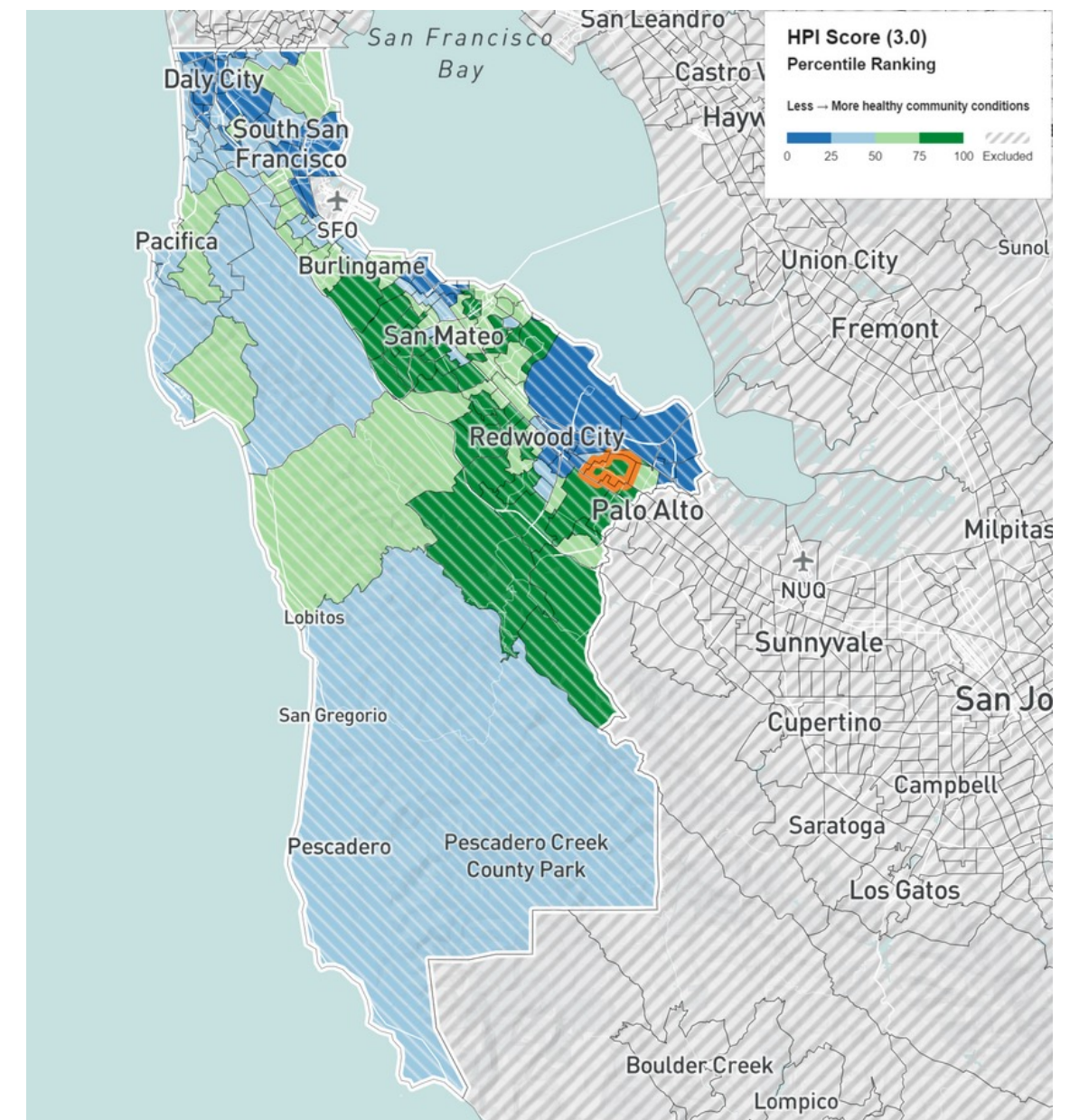
San Mateo RCD



Vulnerable Social Systems in San Mateo County

Vulnerable social systems facilitate poorer outcomes for certain people **before, during, and after** natural hazard events. Factors that often increase vulnerability to hazards include, but are not limited to:

- Poverty
- Discrimination and marginalization
- Exclusion/non-accomodation of people who don't speak English
- Exclusion/isolation of those with disabilities
- Lack of integration and services for undocumented people
- Social isolation of and lack of mobility for older adults



Healthy Places
Index



Community Organizations Active in Disaster (COAD) in San Mateo County

COADs are networks of nonprofits, government, and private sector that work together to respond to community needs before, during, and after disasters

*Shared resources
and services*

*Avoidance
of duplicative
efforts*

*Better
communication of
community needs*

Thrive RISE "Blue Skies" Activities Snapshot

- Monthly Meetings
- Newsletter
- Trainings
 - ICS (Staff Roles in Disaster)
 - Emergency Response Planning
 - Continuity of Operations
 - Tentative: CERT Training for Nonprofits
- Research & Advocacy
- Secure Your Space
- Disaster Outreach and Education





Activation Case Study: January Storms

Response

- Bilingual safety messaging
- 211 coordination
- Needs communications
- Volunteer coordination

Recovery

- DRC nonprofit coordination
- Nonprofit damage survey
- Translation and communications
- Recovery/appeals training

NGAAHI TOKONI KI HE KOLE KI HA

TOKONI 'AE FEMA KI HE FAKAFO'ITUITUI PEA MOE NGAahi FAMILI

1 'AHO 'OKU NGATA AI KO MA'ASI 16, 2023

'Ave ha'o tohi kole ki mu'a he Ma'asi 16 'Ihe Kaunithi 'o San Mateo. Neongo 'oku ke fakamahalo 'e lava 'e ho'o malu'i 'o totongi 'ae maumau ko hoko, pe 'oku 'ikai ke fakapapau'i pe 'oku 'iai ko'a ho'o malu'i pe 'ikai, 'oku lelei taha pe ke ke tohi kole ki he FEMA ke tokoni ki hano toe fakalelei ange 'ae ngaahi faingamalie ke feau 'a ho'o ngaahi fiema'u. 'Okapau 'oku 'ikai ke 'iai hao fika sosiolu sekuliti, te ke kei lava pe ke kole tokoni ki he FEMA 'aki ho'o ki'i tamasi'i kei si'i ka 'oku sitiseni pea 'oku kau 'i he kau nofo 'i he 'api.

- Fai ho'o kole 'i he kompiuta (online) ki he disasterassistance.gov
- Telefoni ki he fika 800-621-3362
- Pe ko ho'o 'alu tonu pe ki he Kaunithi 'o San Mateo Disaster Recovery Center ki mu'a he 'aho 14 'o Ma'asi

2 'OKAPAU 'E FAKAHA ATU KIATE KOE, PEA KE KOLE HA SBA LOAN

'Okapau 'e hanga 'e he FEMA 'o fakahinohino atu ke ke kole ha no ki he Small Business Administration (SBA), pea ke kole. 'Okapau 'e tali ho'o kole, 'oku 'ikai ke pau ia ke ke tali 'e koe. 'Okapau he 'ikai tali 'ae kole no, 'e hanga 'e FEMA 'o toe vakai'i ho'o kole ki he tokoni fakapa'anga.

3 TANGI PE KOLE KE VAKAI'I HO'O KOLE

'E lava pe ke ke tangi pe kole ke vakai'i 'ae tu'utu'uni 'ae FEMA 'i loto 'i ha 'aho 'e 60 mei ho'o ma'u koia 'ae tohi moe tu'utu'uni 'ae FEMA. 'Okapau 'e tomui ho'o tohi tangi, tangi pea ke 'ave pe mo ha tohi fakamatala 'ae 'uhinga na'ake tomui ai he 'aho faka'osi pe ngata'anga na'e fakaha mai he tu'utu'uni.

NGAAHI ME'A 'OKU 'AONGA

Tokoni fakafaituitui 'ae FEMA

Ngaahi me'a 'oku 'aonga kiha fakatamaki (storm) 'ae Kaunithi 'o San Mateo

Thrive RISE Storm Recovery

您是否受到 2023 年 1 月風暴的影響?

參觀聖馬特奧縣的災難恢復中心

2023年二月九日至三月十四日
每日開放 | 上午九點至晚上七點

聖馬特奧縣活動中心
2495 S Delaware St, 賽普拉斯大廈
加利福尼亞州聖馬特奧市 94403

访问圣馬刁县灾难资源中心以获得联邦、州、县和非营利组织的各種服务咨詢，其包括：

- 联邦紧急事务管理局 (FEMA) 的申請表格以及其他灾难援助计划
- 住房和租金
- 關於保險方面的咨詢
- 更換您的駕駛執照、身份證明或其他重要記錄
- 食品、賬單、失業、稅收減免等各方面的緊急幫助
- 有關住房權利、食品計劃、家庭暴力預防、庇護所、心理健康資源等的服務與信息。

提示

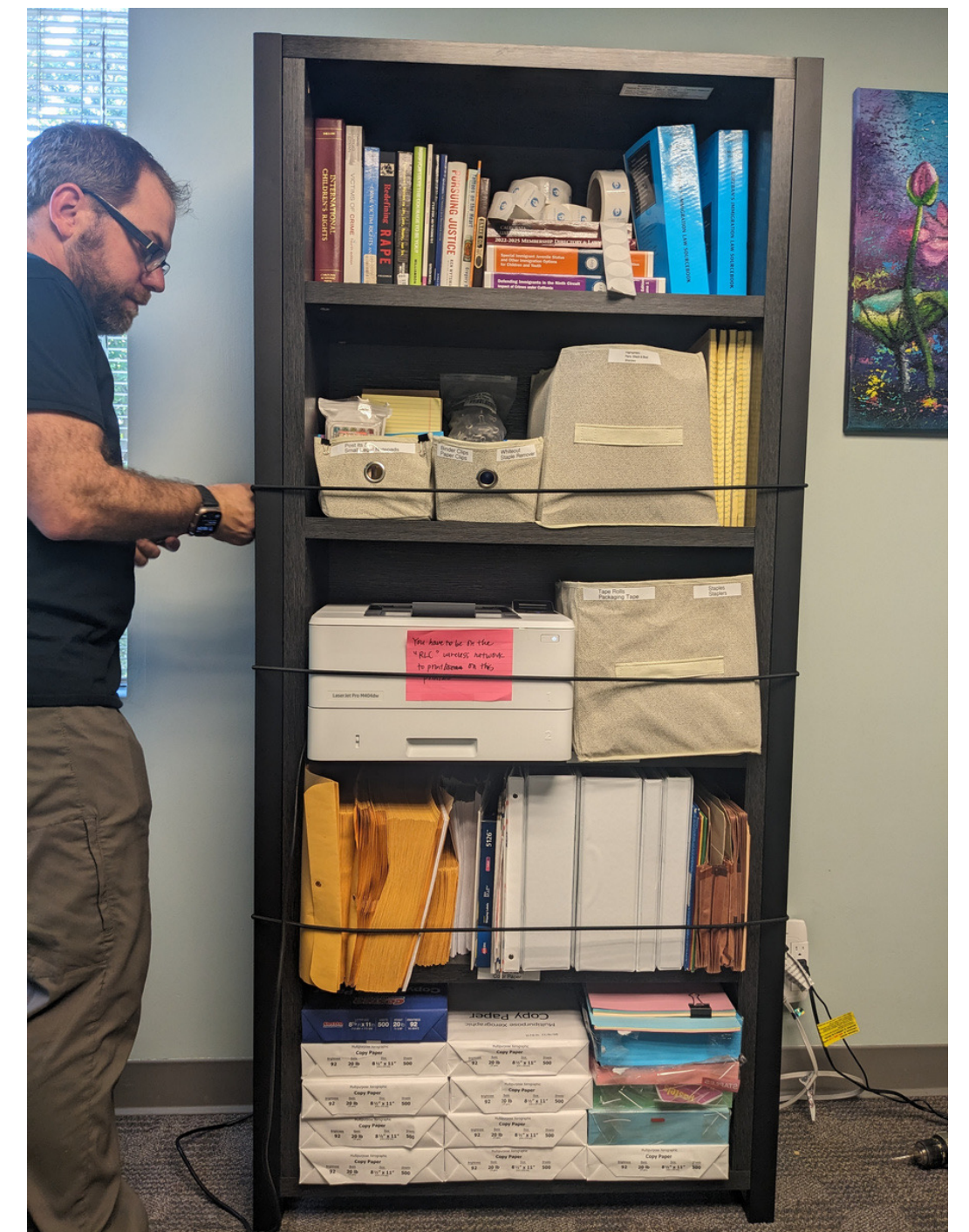
如果您正在申請與風暴損害或損失相關的经济援助，請保存所有相關收據，包括您保險公司的任何拒絕信

你可知道?

無证父母可以代表其家庭中的未成年公民子女申請聯邦緊急事務管理局 (FEMA) 经济援助。

Thrive RISE on Earthquake Resilience: 'Secure Your Space'

- Materials grant for 'secure your space' targeted at San Mateo County nonprofits and childcare providers
- Partnership with Team Rubicon and individual volunteers to support installation



Thrive RISE Monthly Meeting

**Last Wednesdays
10:00 - 11:30 am**



Hosted in partnership with:



SBP's Recovery Training Menu

SBP offers training sessions for organizations in disaster-impacted communities. These in-person training sessions provide critical information for navigating the recovery process and allow participants to ask questions and share information with each other. Please fill out the registration form below to register for any session(s) you are interested in attending.

Disaster Recovery Workshop

SBP, in partnership with the Silicon Valley Community Foundation, and Thrive Alliance, is hosting a Disaster Recovery Workshop to share best practices and lessons learned with nonprofits, emergency managers, elected officials, and philanthropy to support the ongoing recovery process from the 2022-23 Winter Storms and better prepare these partners for future disasters.

August 11, 2023

CZI Community Space
801 Jefferson Ave, Redwood City,
CA, 94063

Who we are: SBP

SBP is a national disaster recovery and resilience nonprofit with 15+ years experience in supporting communities recovering after disaster.

Agenda

Welcome and SBP Overview	8:30-8:45
The Toyota Production System	8:45-9:30
Recovery 101	9:30-10:30
FEMA Assistance & Appeals	10:30-12:30
Catered Lunch	12:30-1:00
Long Term Recovery Group Training	1:00-5:00

To Register for one or more of these sessions, please visit the following link:
<https://forms.gle/GMbpTcLH2s8sQdJu6>

Toyota Production System

The Toyota Production System is a tool for effectively managing any process. The goal of Toyota's production system is to take materials through an assembly line and turn them into a high-quality vehicle. SBP follows its detailed client-focused procedures for each rebuilding project, and carefully tracks its rebuilding success to ensure projects are completed on time and within the budget. In this training we provide tools for nonprofits to tackle any underlying operational or structural issues that might be emerging.

Recovery 101

SBP's Recovery Navigation Training details what to expect in the early days following a disaster, tips for approaching the recovery process, and some of the key resources and programs available to support survivors. Topics covered include: How to avoid contractor fraud, muck and gut/mold suppression training and more.

FEMA Assistance and Appeals

Survivors may be denied or under-awarded. Appealing these cases is necessary for a shorter recovery and is also correlated with long-term Housing and Urban Development funds. This training provides a comprehensive overview of the FEMA Individual Assistance Program including duplication of benefits between FEMA, the SBA and insurance companies, types of assistance FEMA provides and qualifications for that assistance, understanding FEMA determination letters, common reasons for ineligibility and how to write successful appeals.

LTRG Training

Long Term Recovery Groups are critical in community recovery. SBP provides a course on organizing and managing an LTRG. The instruction includes an overview of the disaster recovery process, organizing the LTRG, financing the LTRG, common pitfalls of LTRGs, and building a culture of preparedness within the community.

To Register for one or more of these sessions, please visit the following link:
<https://forms.gle/GMbpTcLH2s8sQdJu6>



Questions? Thank you!

ana@thrivealliance.org

g