

SPUR Sidewalks

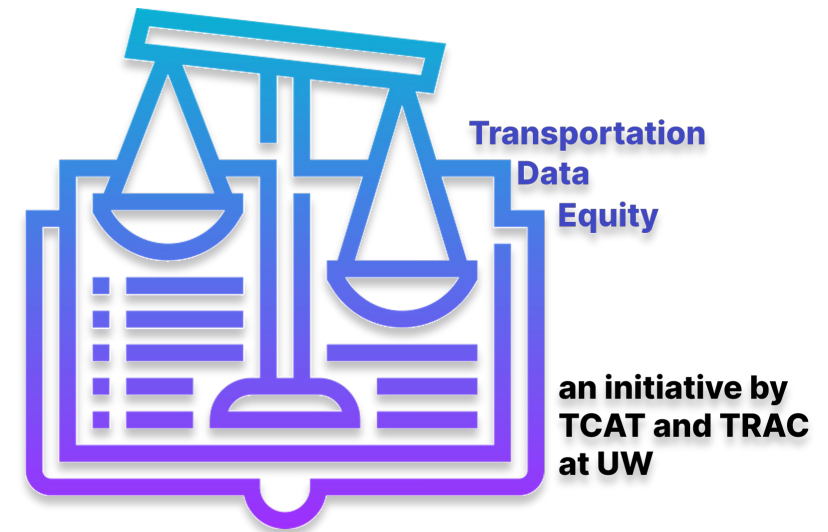
Mark Hallenbeck

Washington State Transportation Center (TRAC)

University of Washington



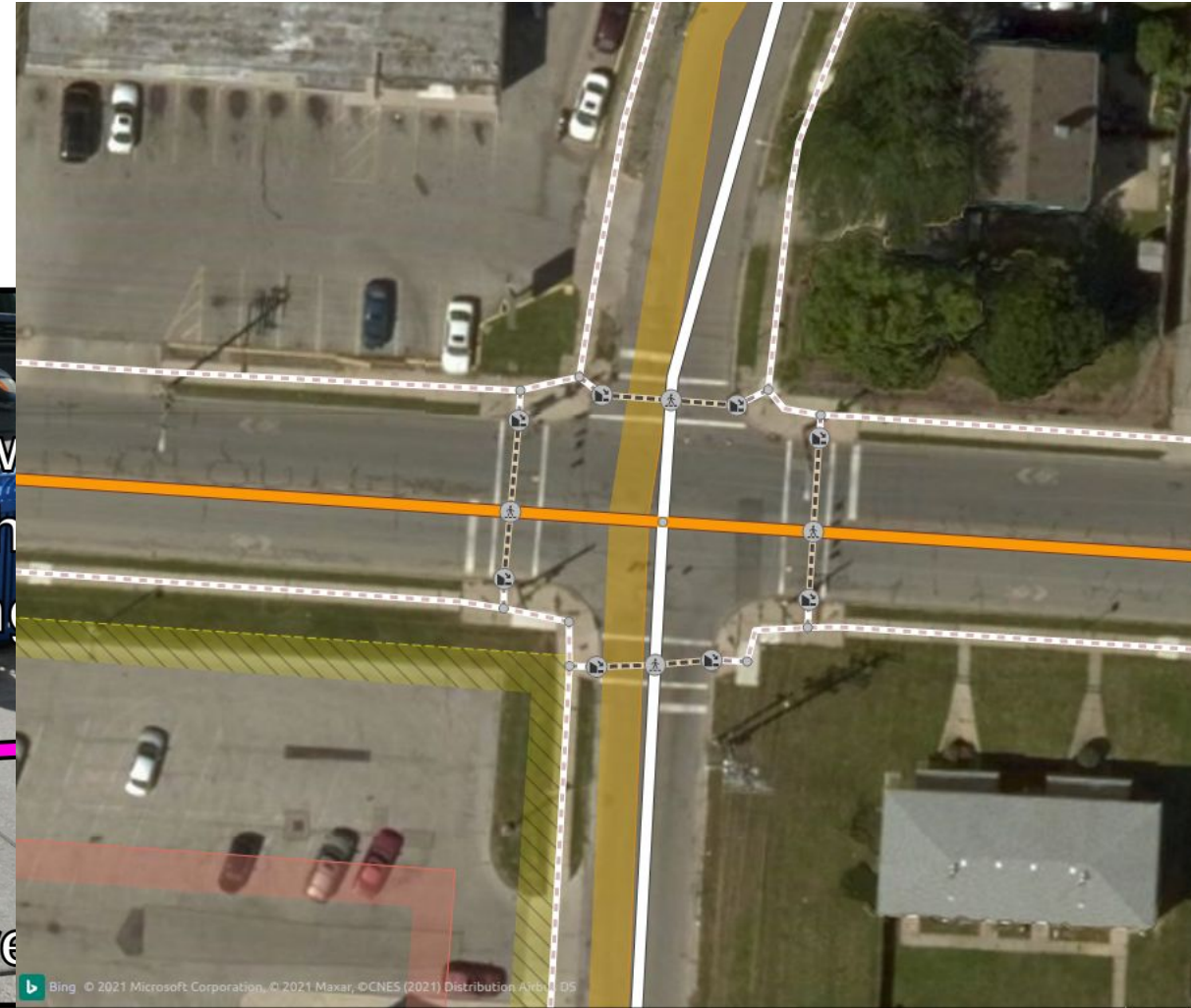
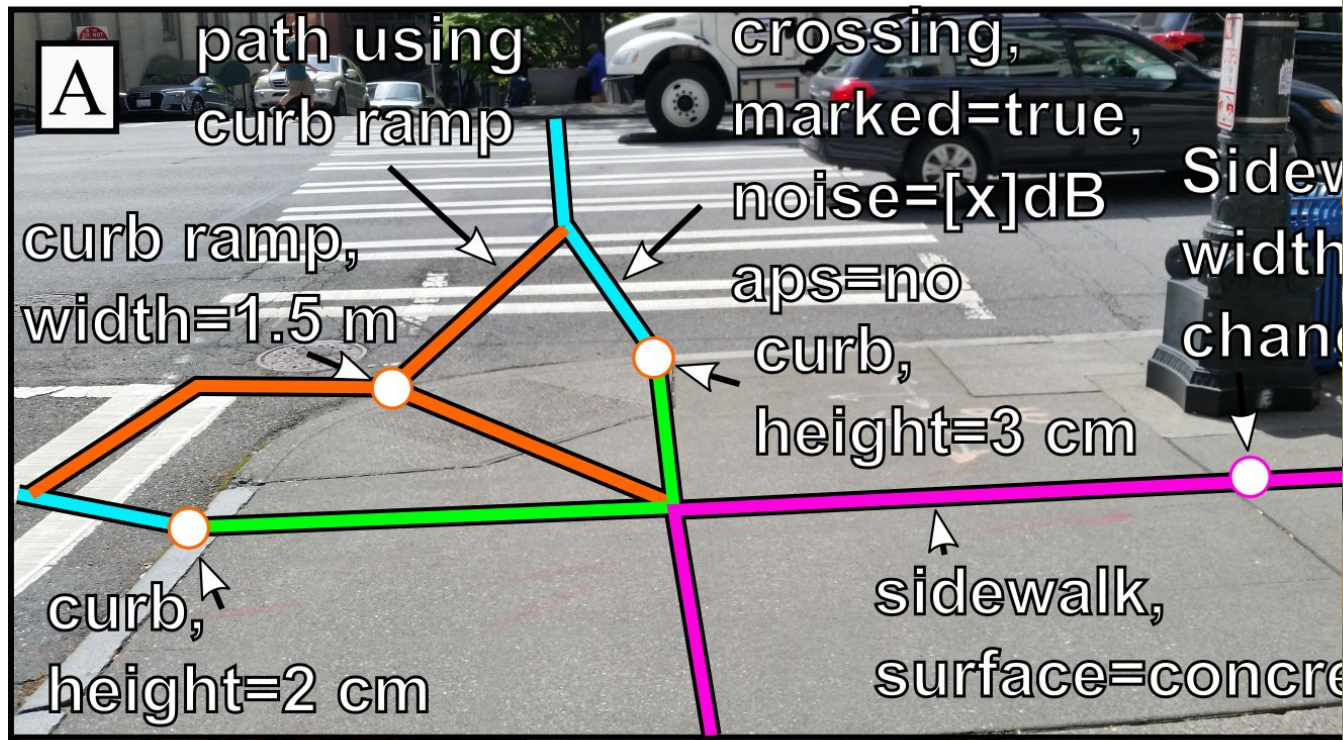
IT'S TRANSPORTATION FOR ALL OF US



The essential (US-centric) urban pedestrian network requires:

- sidewalks
- street crossings
- links (connections)

**Objective descriptions of infrastructure
not subjective “accessibility” labels**



These sidewalks are too narrow

No crosswalks!

No curb ramps!

Too steep for me!

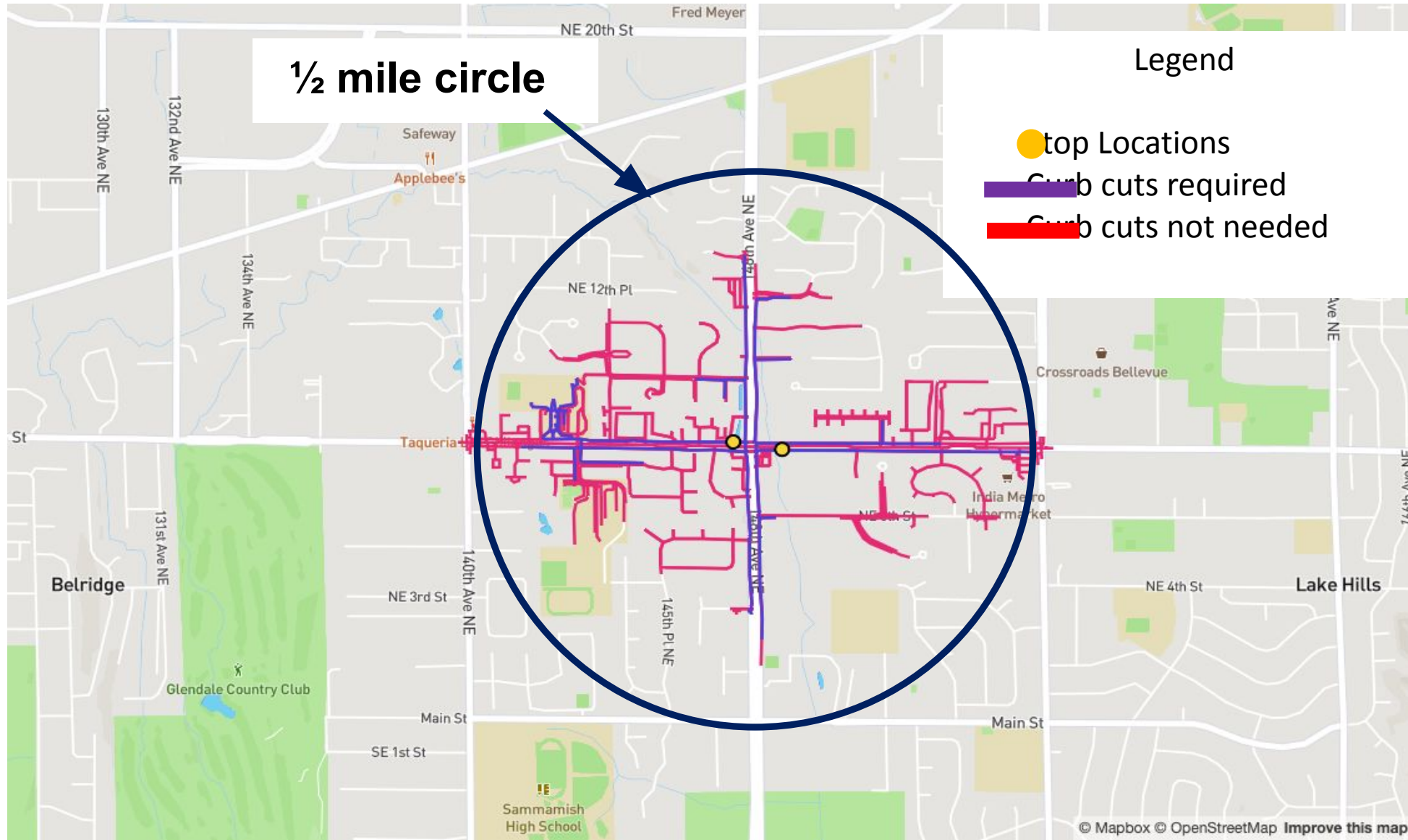
Use the skybridge

Use the elevators to go up the hill



Who can actually walk to transit?

10-minute Walkshed to B-Line BRT Stops, Bellevue, WA



Normative Walking

Manual Wheelchair

amenities
reachable

1-2

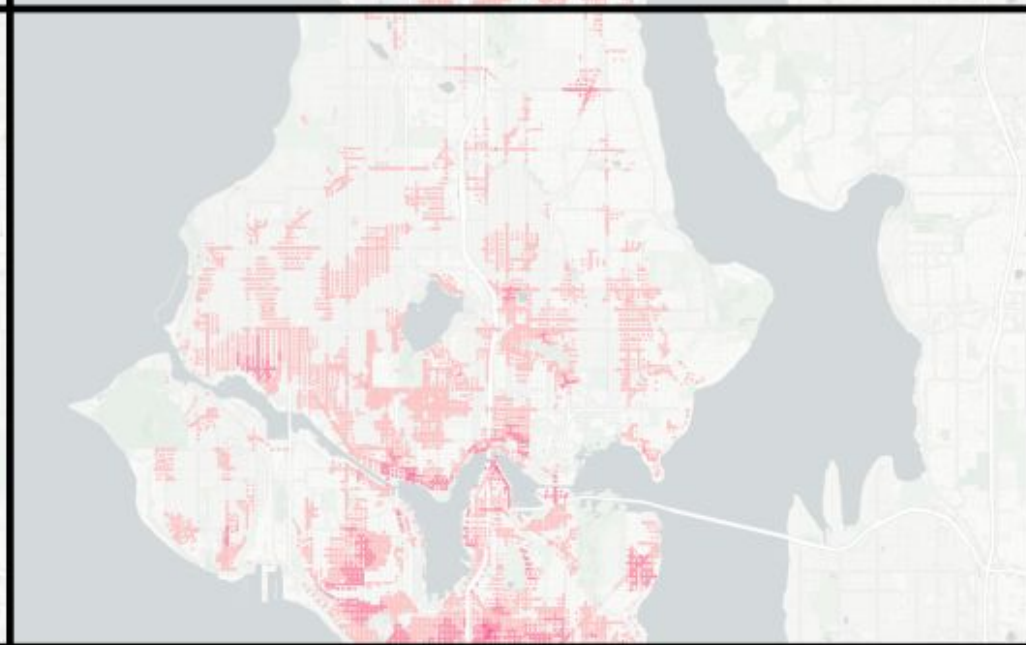
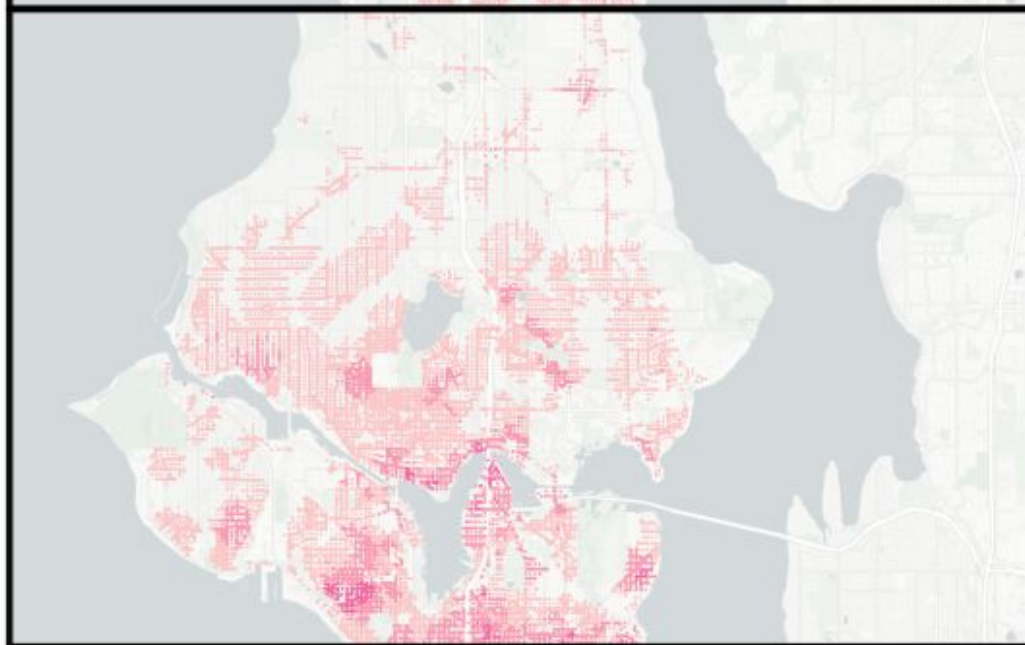
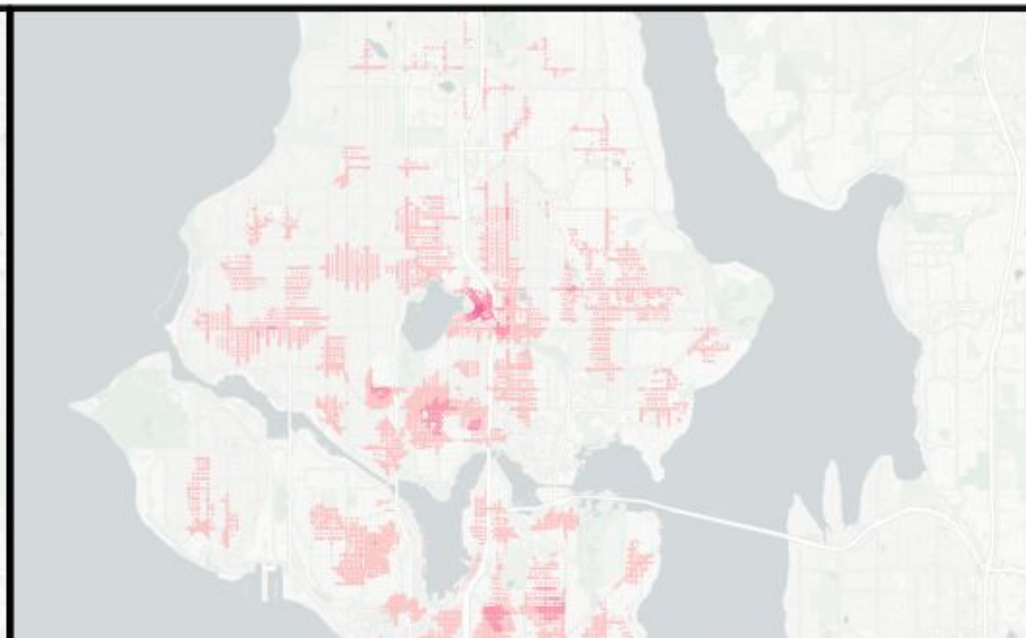
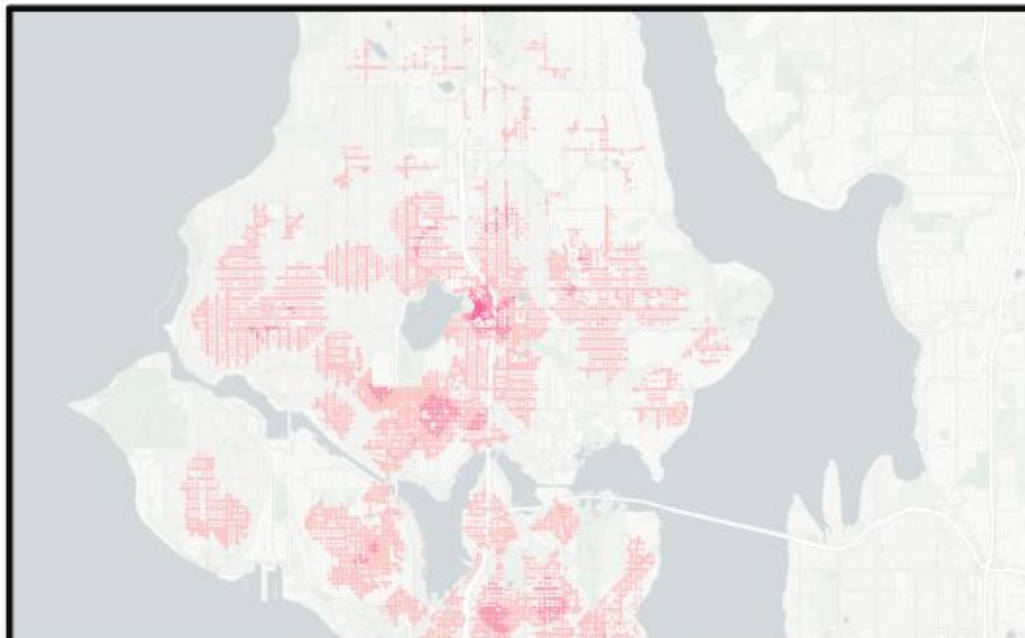
3-5

6-9

10-13

Schools

Parks



0 0.05 0.1 0.2 Miles

- 66 crossings
- 49 marked, 17 unmarked

- 15-min walkshed with curb-cuts
- 15-min walkshed without curb-cuts



Wilburton Elementary
School