



# San Francisco Bay Disadvantaged Community and Tribal Involvement Program – Tap Water Testing



# San Francisco Estuary Partnership: *Protect and improve water quality and habitats in and around the Bay*

**Regional Partner**  
Institutional home  
(administrative, fiscal)

**ABAG/MTC**

**SFEP**

**EPA**

**Federal Partner**  
Legislative home  
(program approval, base funding)



## SF Bay Area IRWM Grant Awards to ABAG/SFEP

Proposition 84 (2006)	Grant Amount	Year
Round 2 Implementation	\$20,000,000.00	2014
Round 3 Implementation	\$32,178,423.00	2015
Round 4 Implementation	\$21,469,025.00	2016
Proposition 1	Grant Amount	Year
Disadvantaged Community and Tribal Involvement Program	\$4,827,000.00	2019
Round 1 Implementation	\$22,750,000.00	2020
Round 2 Implementation	\$29,250,000.00	2022
	<b>\$130,474,448.00</b>	<b>8 yrs</b>

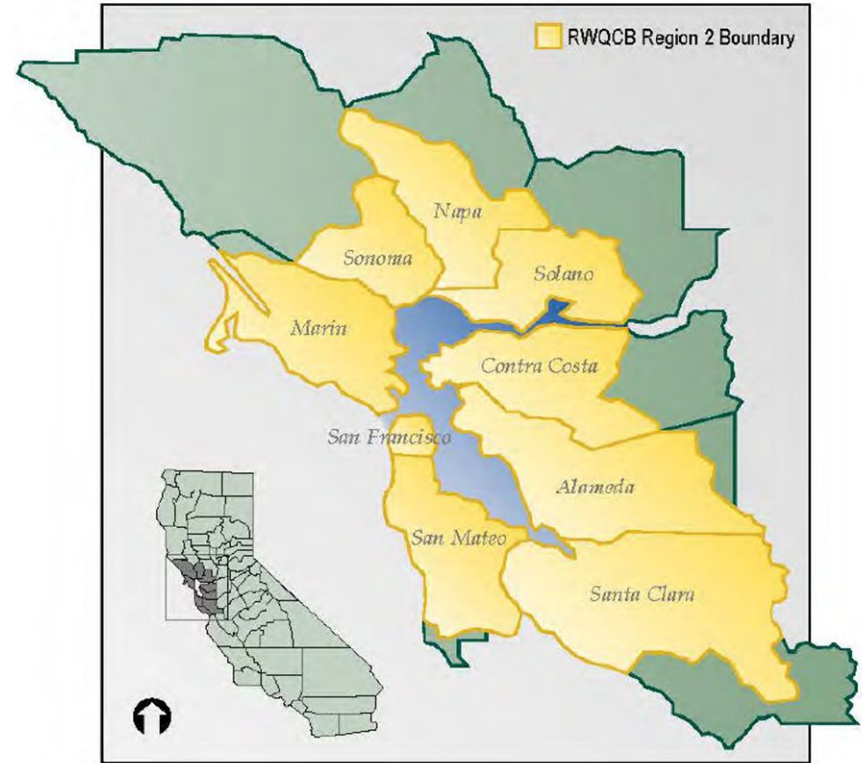




# Bay Area Integrated Regional Water Management Program

Regional effort under DWR that issues large-scale implementation grant rounds using Proposition funding:

- Water Supply / Water Quality
- Wastewater / Recycled Water
- Flood Control / Stormwater
- Habitat / Watersheds



# Water Needs Assessments

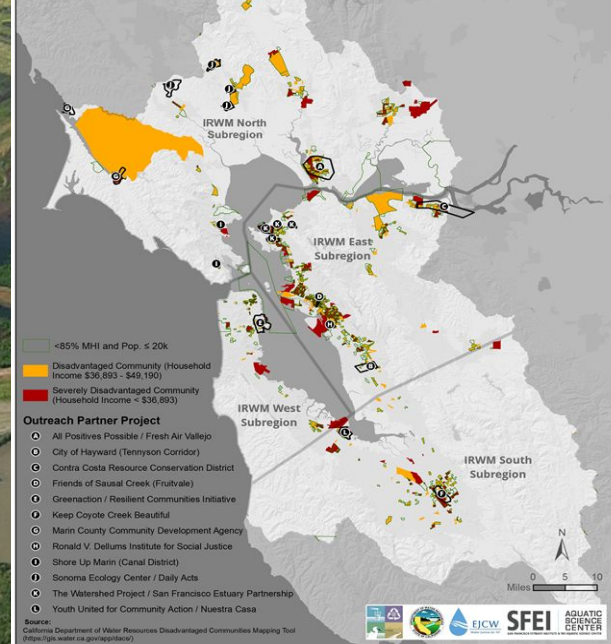
- Included
  - Disadvantaged Communities in 17 cities
  - 4 Tribes
  - People Experiencing Homelessness
- Informed by
  - Over 2,000 surveys
  - Over 100 meetings, listening sessions, and interviews
  - 700 surveys with people experiencing homelessness

**Release Date:  
September 2022**



## Disadvantaged Communities by Census Block Groups

A Census Block Group is the smallest geographical unit for which sample data is published, typically having a population of 600 - 3,000 people.



# Distrust in Tap Water Quality

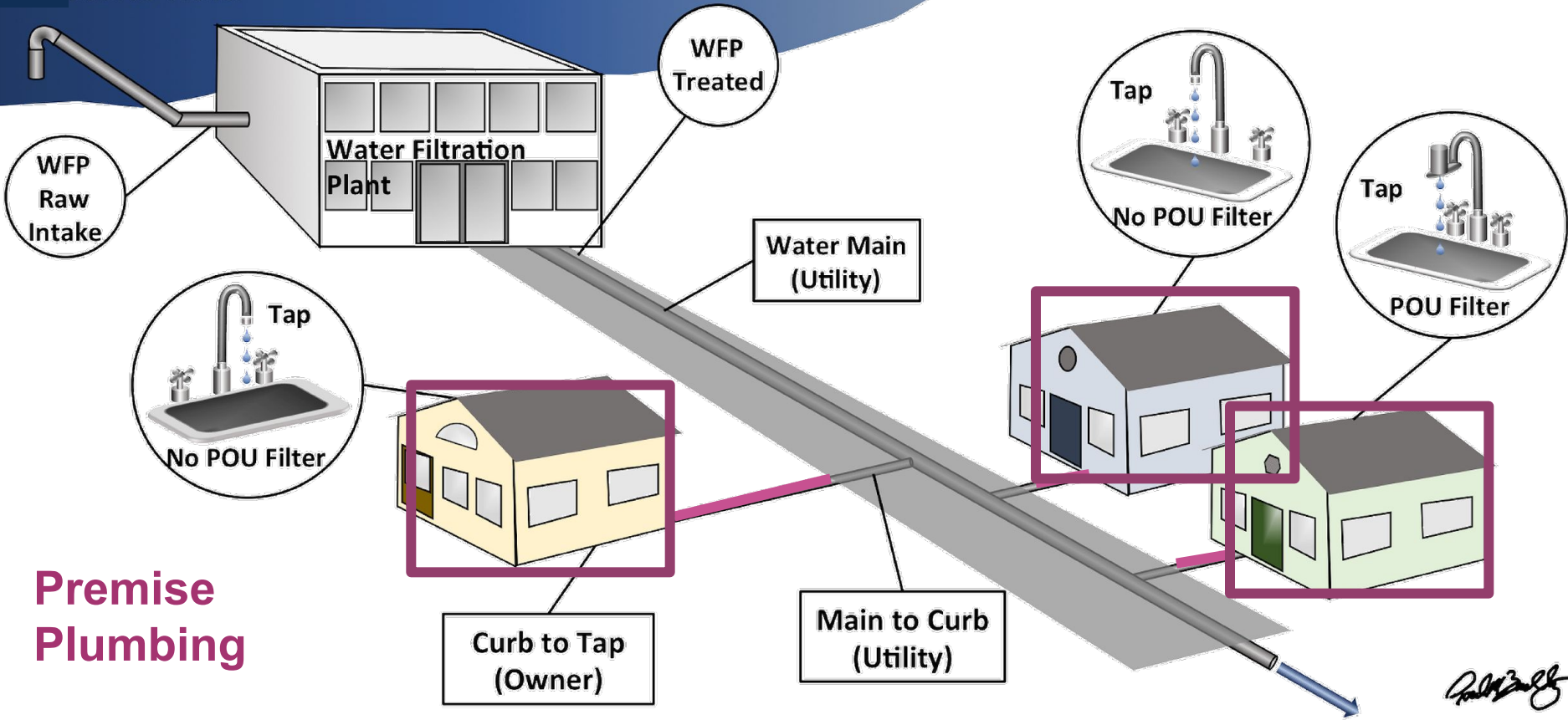
- Most common finding
- Reports of poor taste, odors, discoloration, and even skin irritation
- Overwhelming use of bottled water to avoid drinking tap water
- Support for third party effort to investigate tap water quality
- **Facts First:** This was not the first tap water testing effort in the Bay Area



**Quick Fact:** Over 70% of East Palo Alto and Marin City residents surveyed said they use only bottled water for drinking and cooking



# Source Water



## Premise Plumbing



# Tap Water Testing Goals

1. Increase trust in bay area tap water
2. Generate regional data on tap water quality that is informative and defensible
3. Increase understanding of tap water quality policy and science
4. Build and strengthen partnerships between communities and their utilities, municipalities and other public stakeholders





# Tap Water Testing

- Although we had strict, scientific methodologies, this was not a scientific experiment
- Data is important, and it allows communities to engage water providers in ways that can strengthen relationships and build trust
- Most utilities were skeptical at the beginning, but many have engaged communities more significantly as a result of this program





# Tap Water Testing Facts at a Glance

- Collected 600 **samples** – tested in ELAP certified labs
- Looking at **over 100 analytes** including metals, VOCs, dry-cleaning byproducts, disinfection byproducts, radiation, and more
- Comparing against regulatory standards
- **Communities and Tribes determined** where to test and what panels they wanted to use.
- Community and Tribal participants have access to **their own data**
- Utilities and the state Division of Drinking Water are aware of the program and in some cases, partnering with communities
- **SimpleLab** is coordinating the logistics and is hosting the data



# Process

1) Communities and Tribes selected the SimpleLab panels they wanted to use to examine their water



**CORE KIT**  
**Essential City Water Test**   
47 Analytes Tested



**CORE KIT**  
**Advanced City Water Test**   
109 Analytes Tested



**CORE KIT**  
**Extended City Water Test**   
118 Analytes Tested



2) Kits are ordered and shipped to the community outreach partners

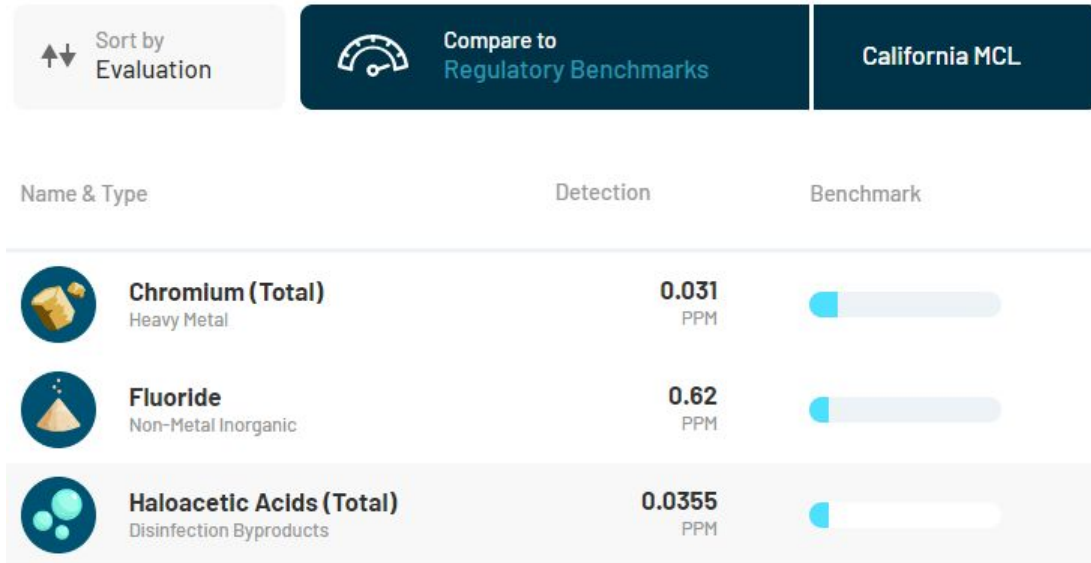
3) Outreach partners went to homes to collect samples and shipped them off to the labs





# Process

4) Results are distributed to participants and outreach partners



5) Work with outreach partners to organize and hold community meetings to discuss the results



# Program Details

- Technical guidance - UCLA Luskin Center
- All laboratories are ELAP Certified
- Test Panels use industry-standard EPA detection methodologies
- Results will be measured against California Maximum Contaminant Levels and California Public Health Goals
- Final results expected in August 2022 – Report on results expected in December 2022

