

SJ



**DOWNTOWN
TRANSPORTATION PLAN**

SPUR Forum

Lend Your Voice to Shape Downtown's Transportation Future

Wilson Tam and Eric Eidlin
April 14, 2022

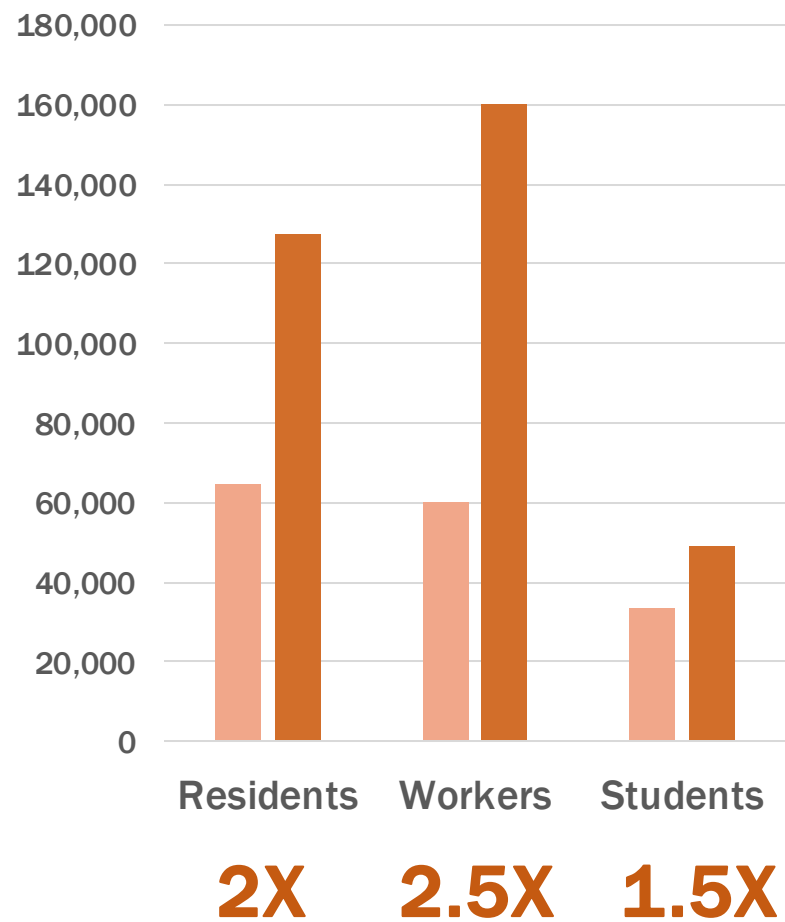
Source: Tomwsulcer

Agenda

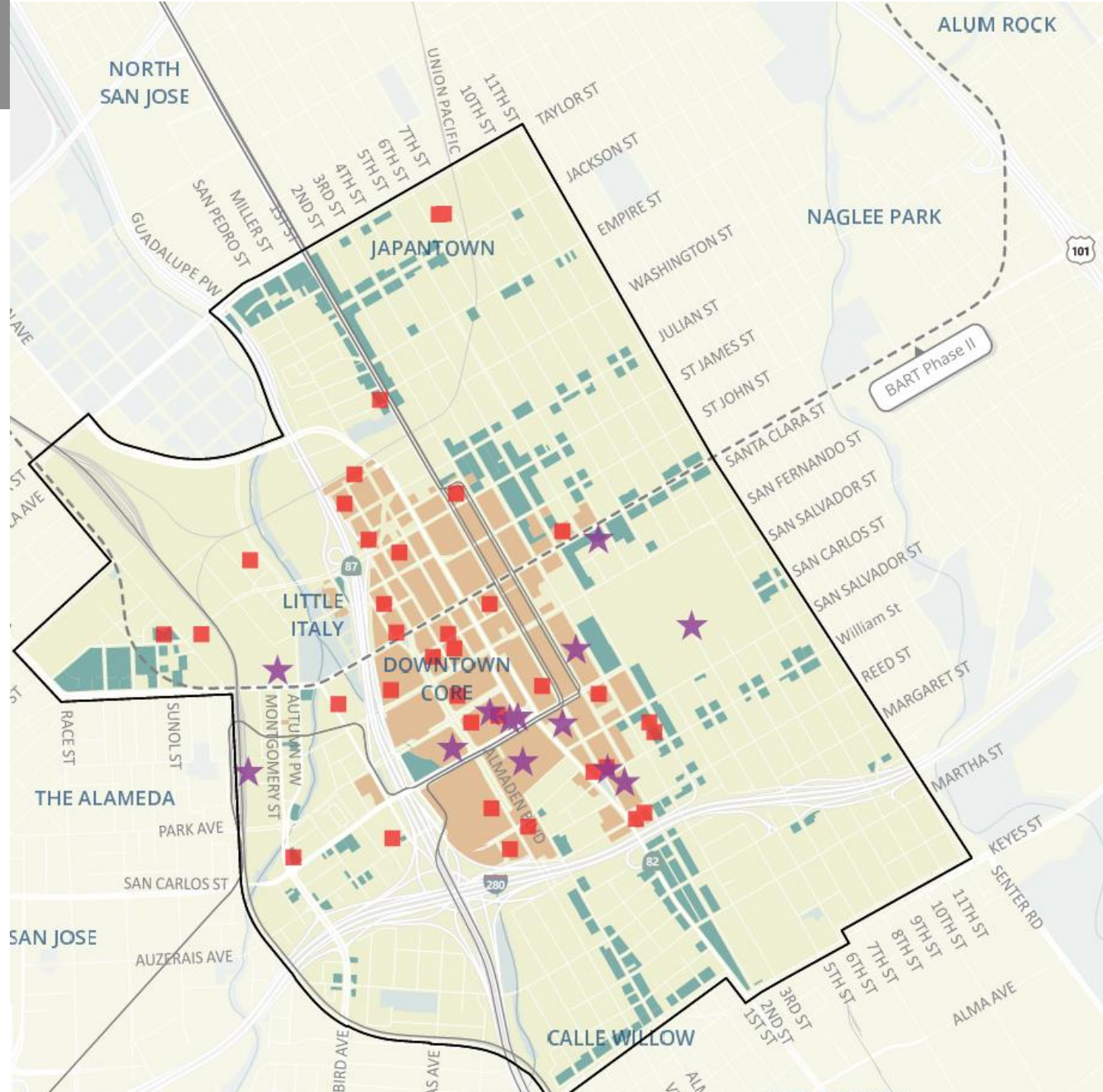
- **Downtown Transportation Plan overview and process**
- **Online open house results**
- **Discussion**



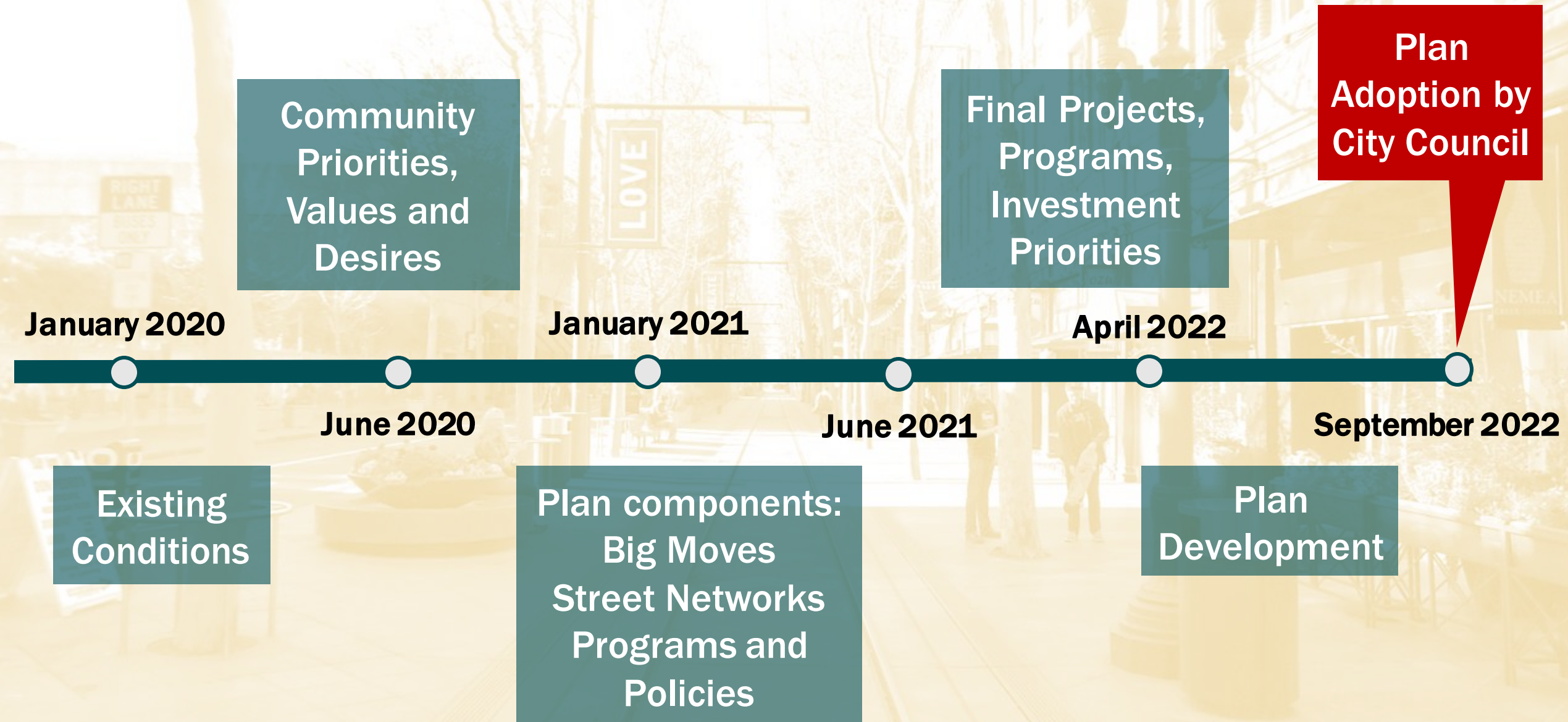
Expected growth



- Project Boundary
- Commercial
- Downtown Mixed-Use
- Major Private Development
- Downtown Attractors



Planning Process



Community Engagement



- **Community Desires (Fall 2020)**
 - Partnerships with community organizations
 - Listening sessions (5)
 - Community workshop
 - Focus groups (4)
 - Neighborhood/stakeholder meetings (6)
 - Online survey



- **Strategies Development (2020-2021)**
 - Partnerships with community organizations
 - Speaker series (3)
 - Neighborhood/stakeholder meetings (5)
 - Online open house & survey
 - Viva Calle (2)

Online Open House (Jan-Feb 2022)

<https://www.movesanjose.org/downtown-transportation-plan-open-house/>

Street Networks



Big Moves



Guiding Principles



Welcome to the Online Open House

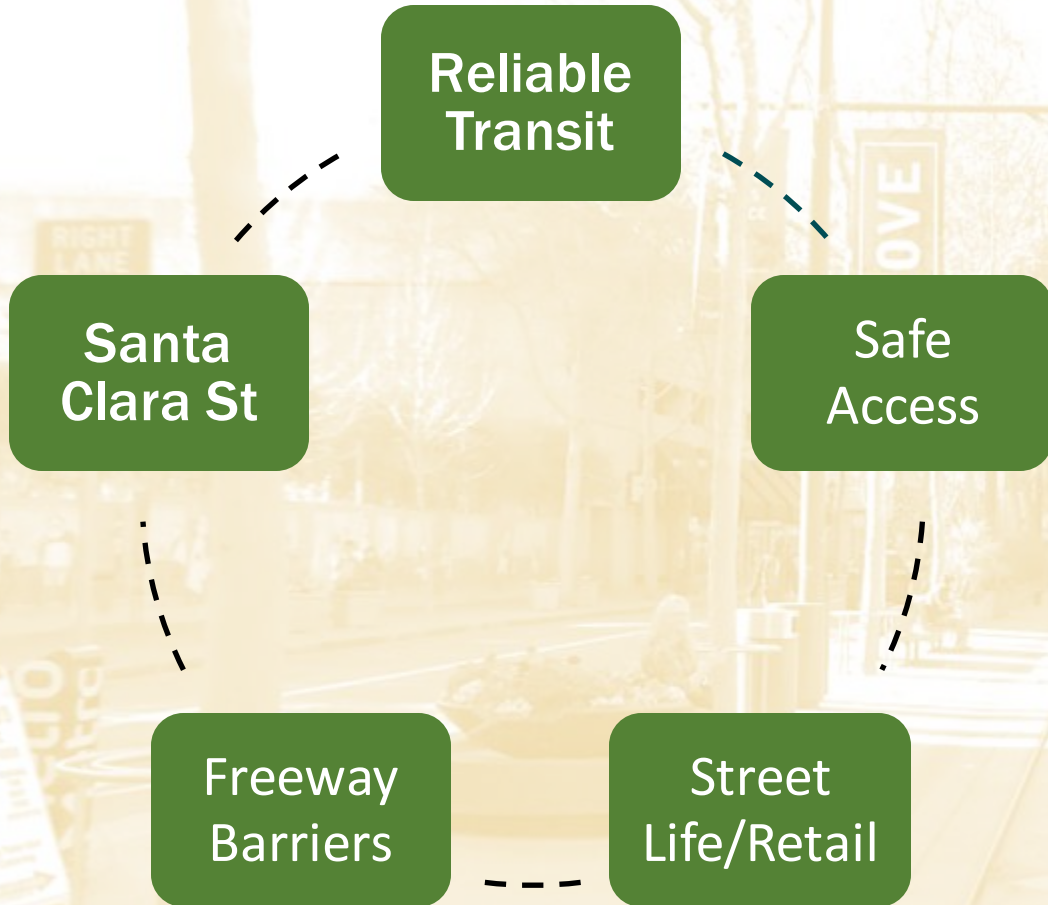
SAN JOSÉ
DOWNTOWN
TRANSPORTATION PLAN

Welcome to the Online Open House

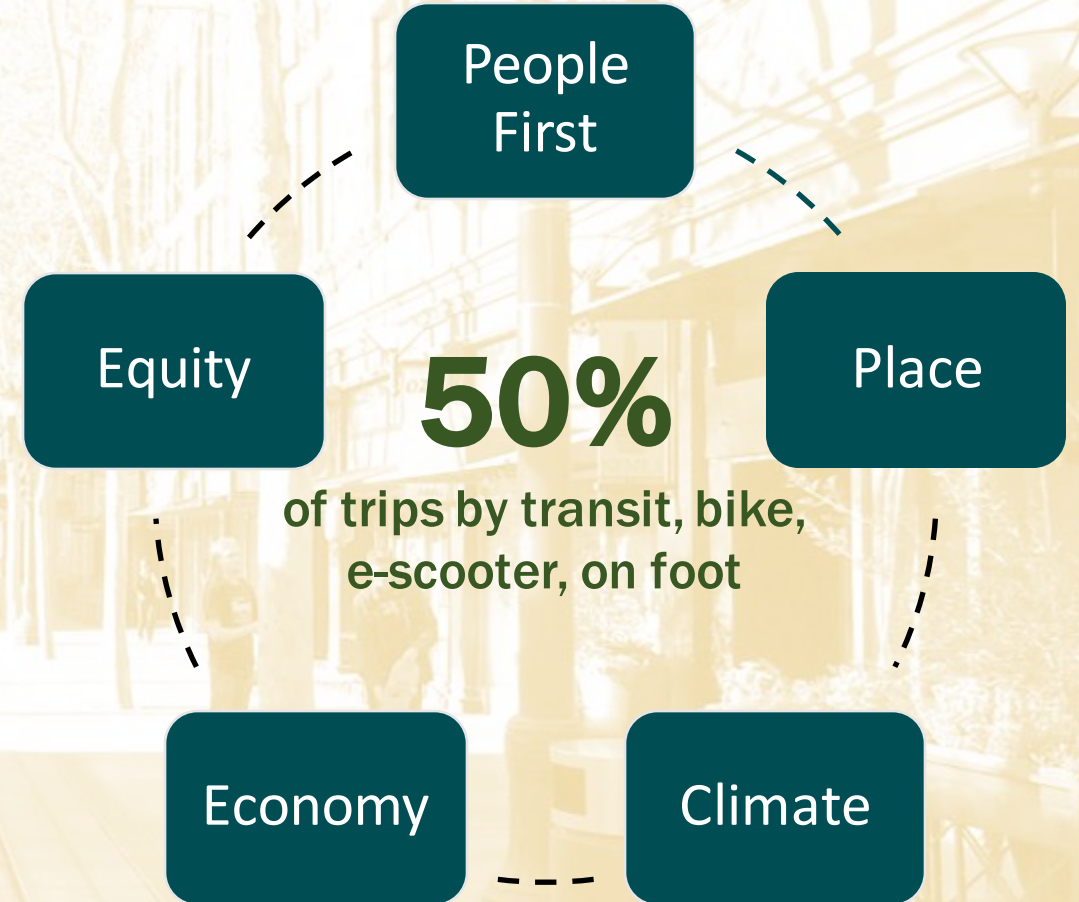
03:13

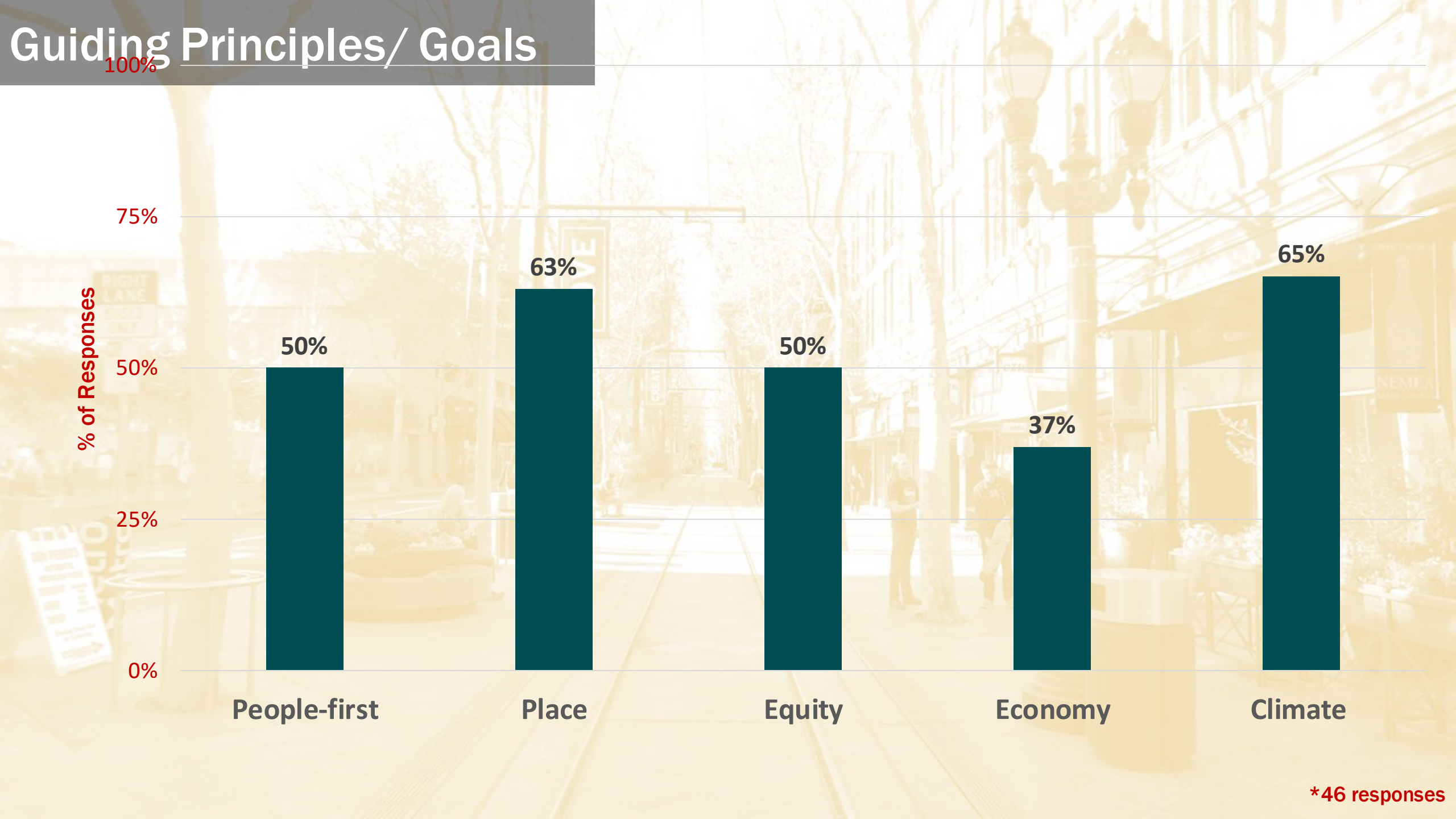
CC

Community Desires

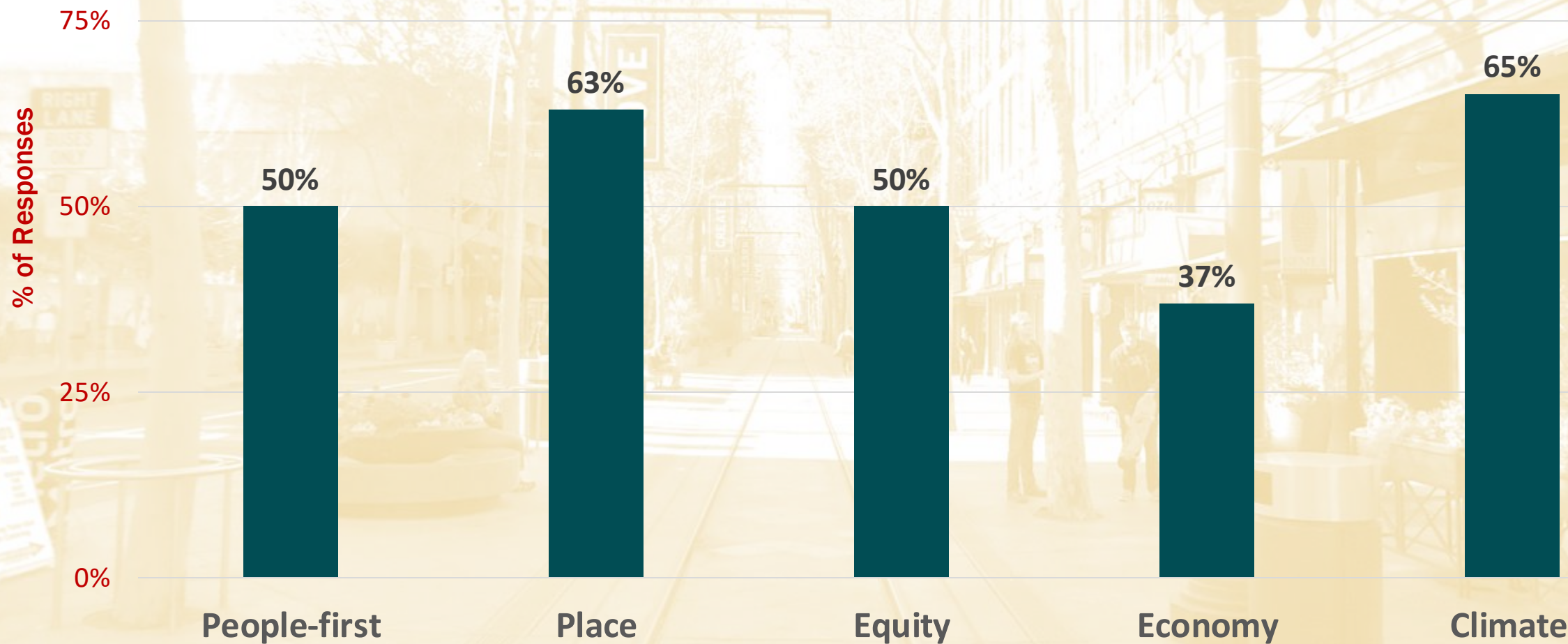


Guiding Principles/ Goals





Guiding Principles/ Goals



*46 responses

Plan Components

Big Moves



Re-envisioning
Santa Clara Street



Light Rail
Realignment



Bike Superhighway



Bridging Freeway
Barriers

Street Network



Transit/ Biking/
Walking/ Vehicle/
Delivery



Commercial Loading

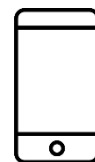


Passenger Loading/
On-Street Parking

Programs



Ridesharing



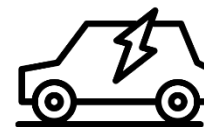
Technology



Subsidies/
Benefits



Education/
Marketing



Carshare/
Electrification



Neighborhood
Shuttle

Policies



Parking Pricing/
Time Restrictions



Development Review



Transit-First

Big Move #1

Enhancing Santa Clara Street

- Creating dedicated lanes for transit and other public services
- Significantly widening sidewalks
- Expanding outdoor space
- Converting it to a plaza-like street focusing on public life, transit access, and walking and biking, with restricted vehicle access.

Big Move #2

Closing Gaps in Downtown Trail Network



- Grade-separated rail corridor bikeway
- Japantown Highline: Elevated bikeway along rail tracks?



Big Move #3 Improving Downtown Light Rail



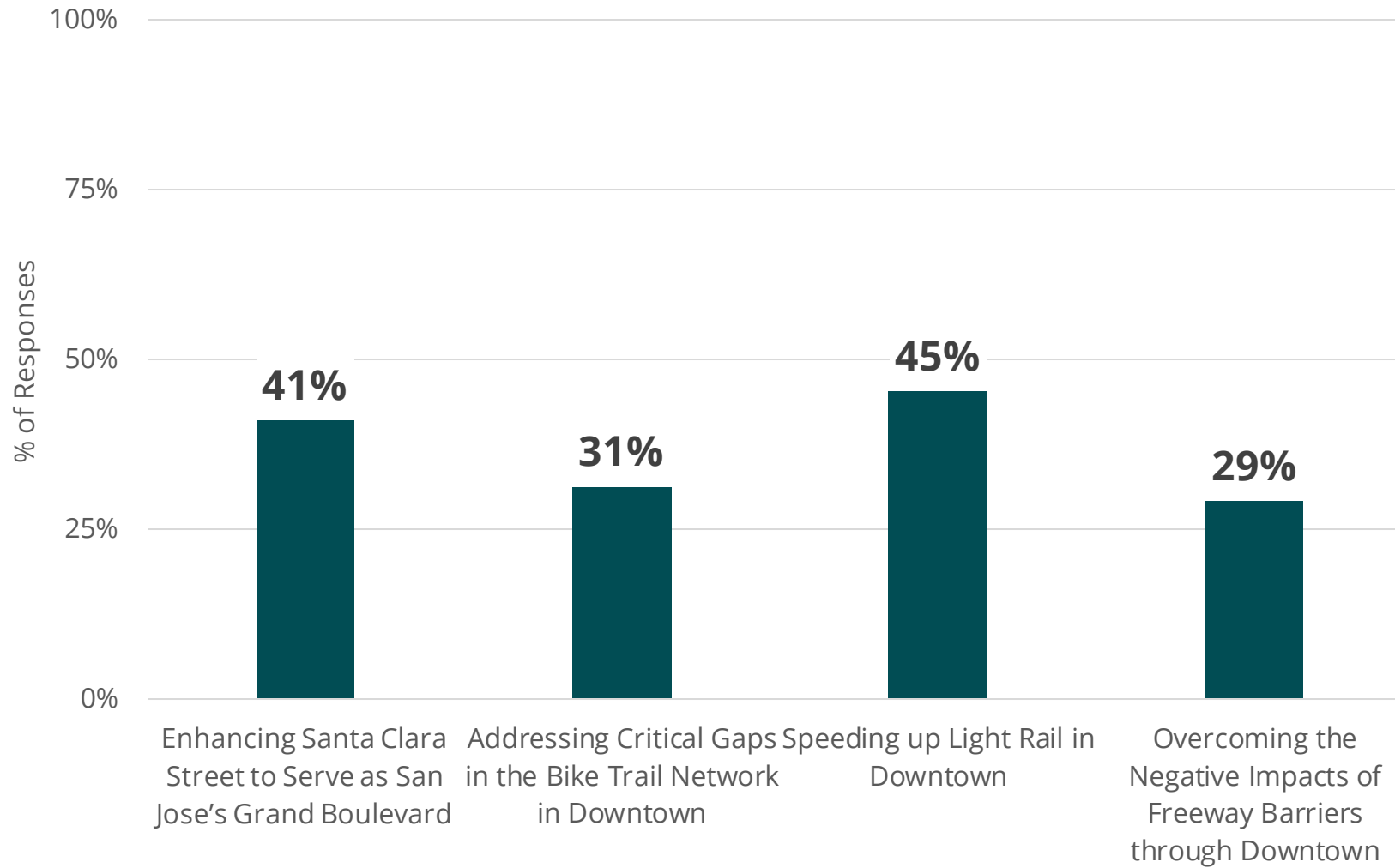
- Two-way light rail service on First Street?
- Grade-separated light rail through Downtown?



Big Move #4 Fixing Freeway Barriers

- Consolidated freeway ramps to improve neighborhood connections?
- Urban park & plaza over I-280?
- Highway 87 urban boulevard?

Which Big Moves to Prioritize (93 responses)



SkyCycles Proposal for London (Norman Foster and Partners)



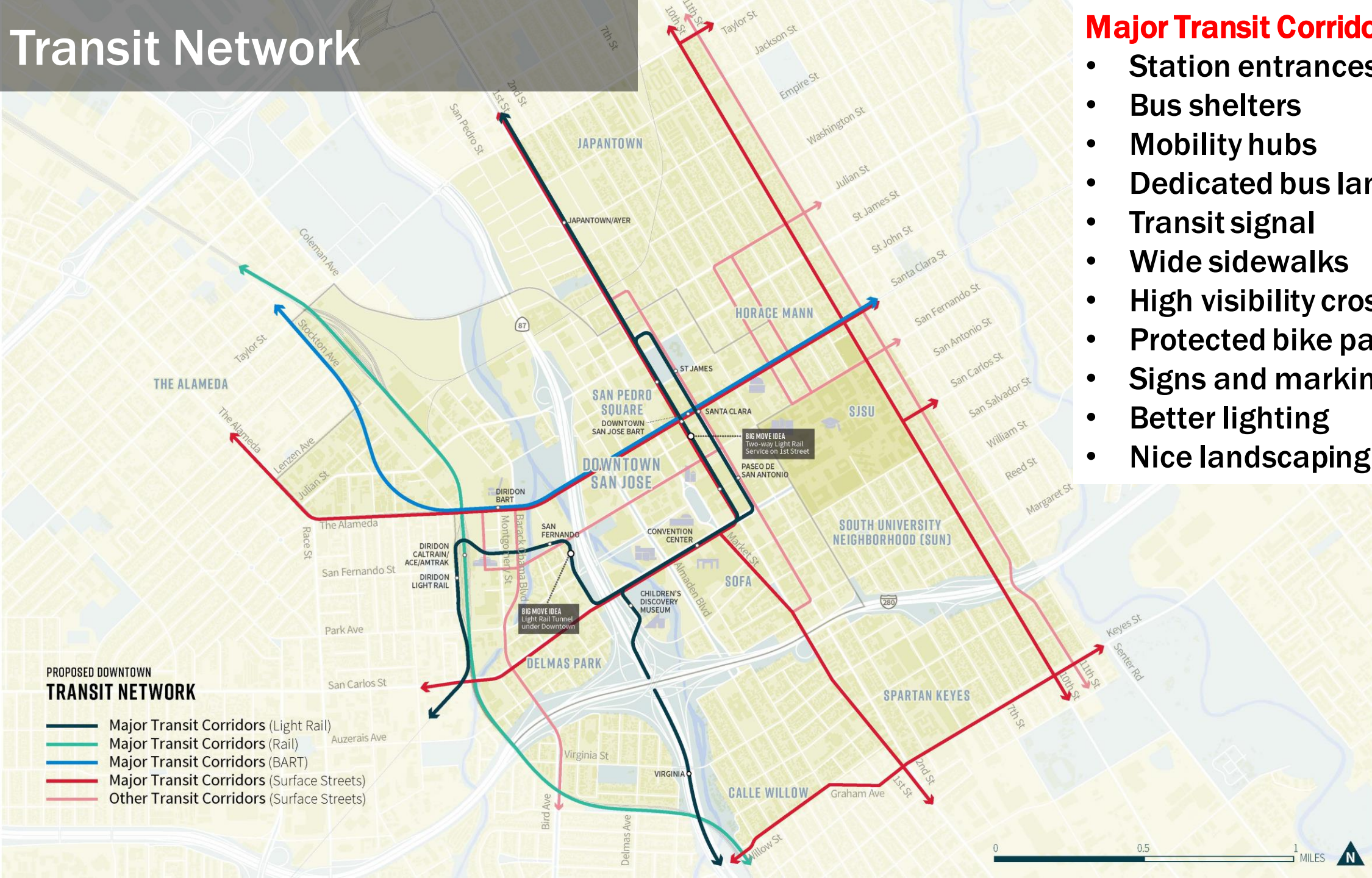
Transit Network

Major Transit Corridors prioritize:

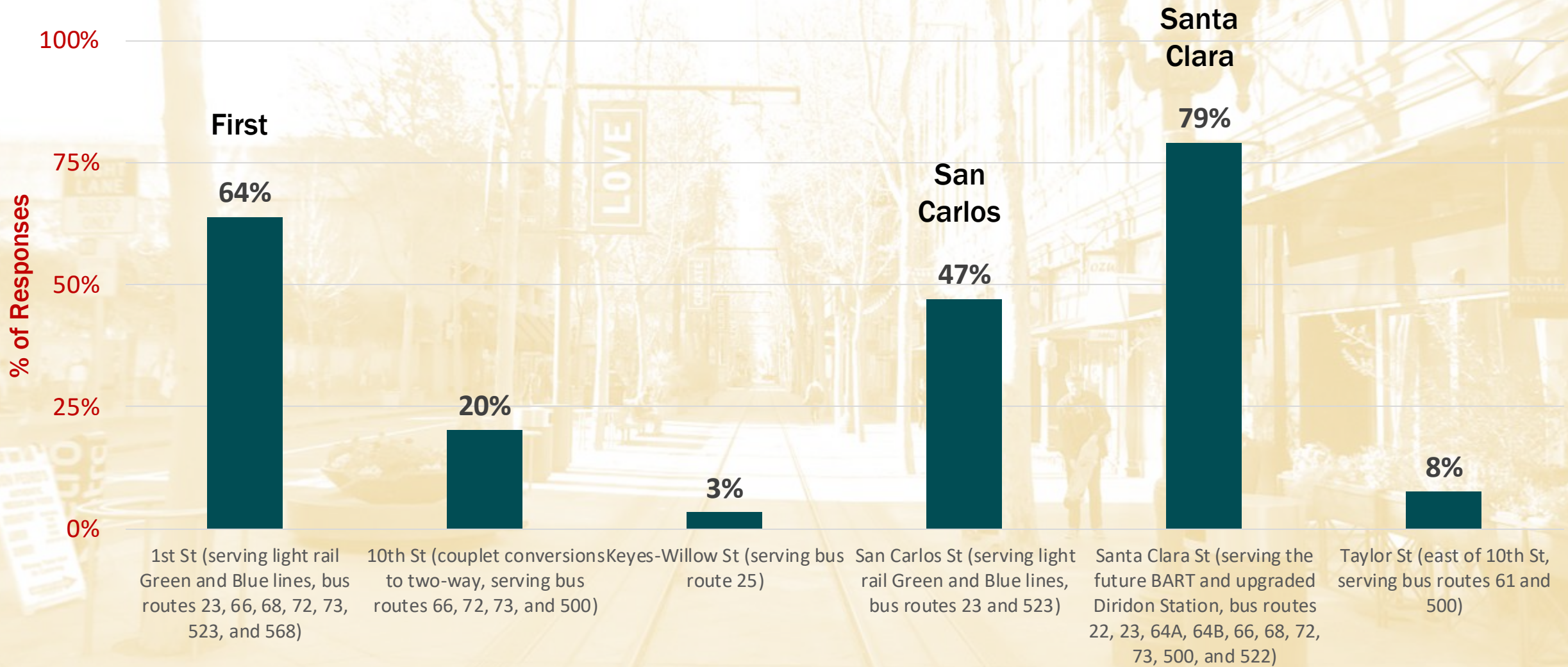
- **Station entrances**
- **Bus shelters**
- **Mobility hubs**
- **Dedicated bus lanes**
- **Transit signal**
- **Wide sidewalks**
- **High visibility crosswalks**
- **Protected bike paths**
- **Signs and markings**
- **Better lighting**
- **Nice landscaping**



- Major Transit Corridors (Light Rail)
- Major Transit Corridors (Rail)
- Major Transit Corridors (BART)
- Major Transit Corridors (Surface Streets)
- Other Transit Corridors (Surface Streets)



Most Helpful Transit Corridor



***119 responses**

Walking Network

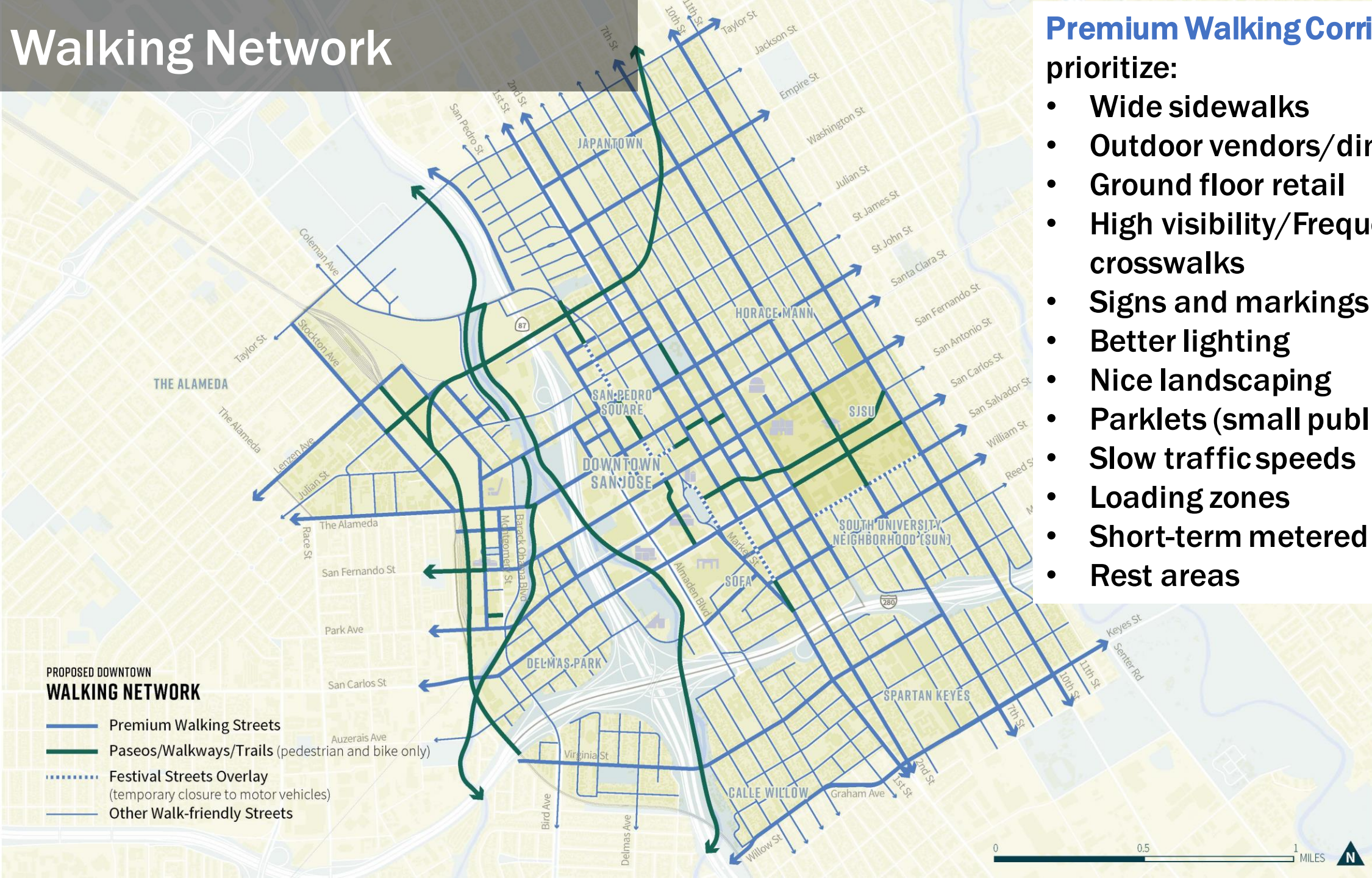
Premium Walking Corridors

prioritize:

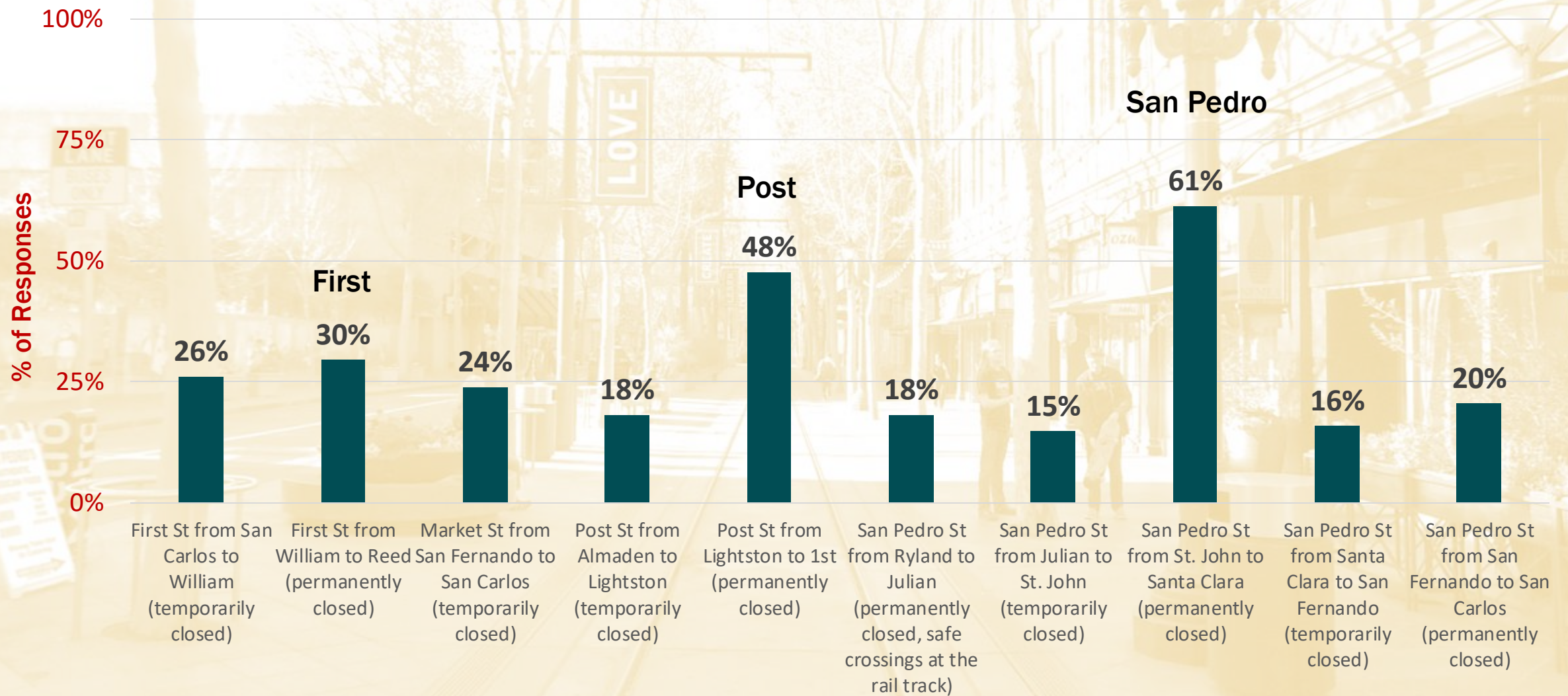
- Wide sidewalks
- Outdoor vendors/dining
- Ground floor retail
- High visibility/Frequent crosswalks
- Signs and markings
- Better lighting
- Nice landscaping
- Parklets (small public space)
- Slow traffic speeds
- Loading zones
- Short-term metered parking
- Rest areas

PROPOSED DOWNTOWN WALKING NETWORK

-  Premium Walking Streets
-  Paseos/Walkways/Trails (pedestrian and bike only)
-  Festival Streets Overlay
(temporary closure to motor vehicles)
-  Other Walk-friendly Streets



Streets for Walking and Public Life



***88 responses**

Biking & Scooter Network

Premium Biking Corridors

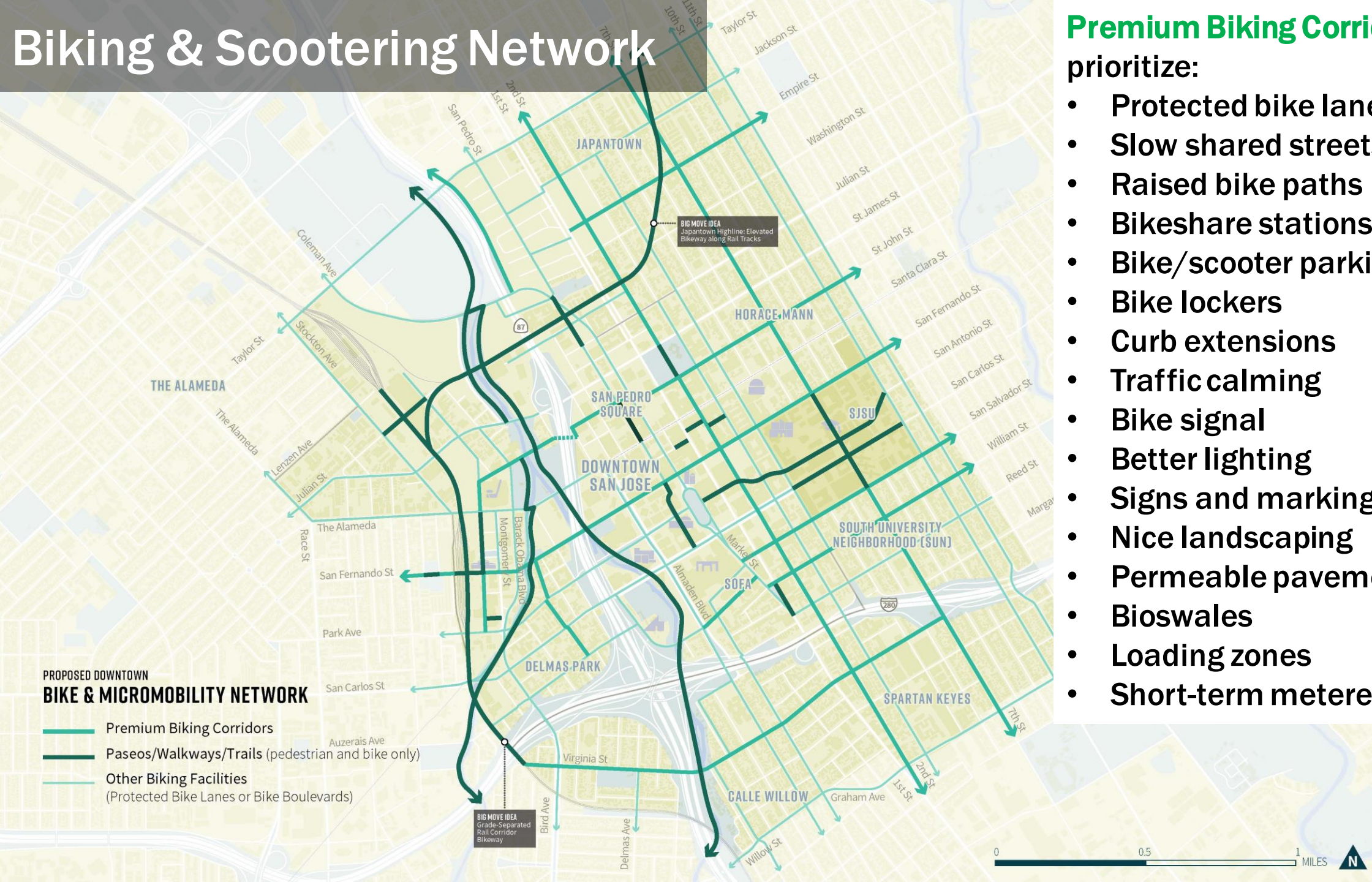
prioritize:

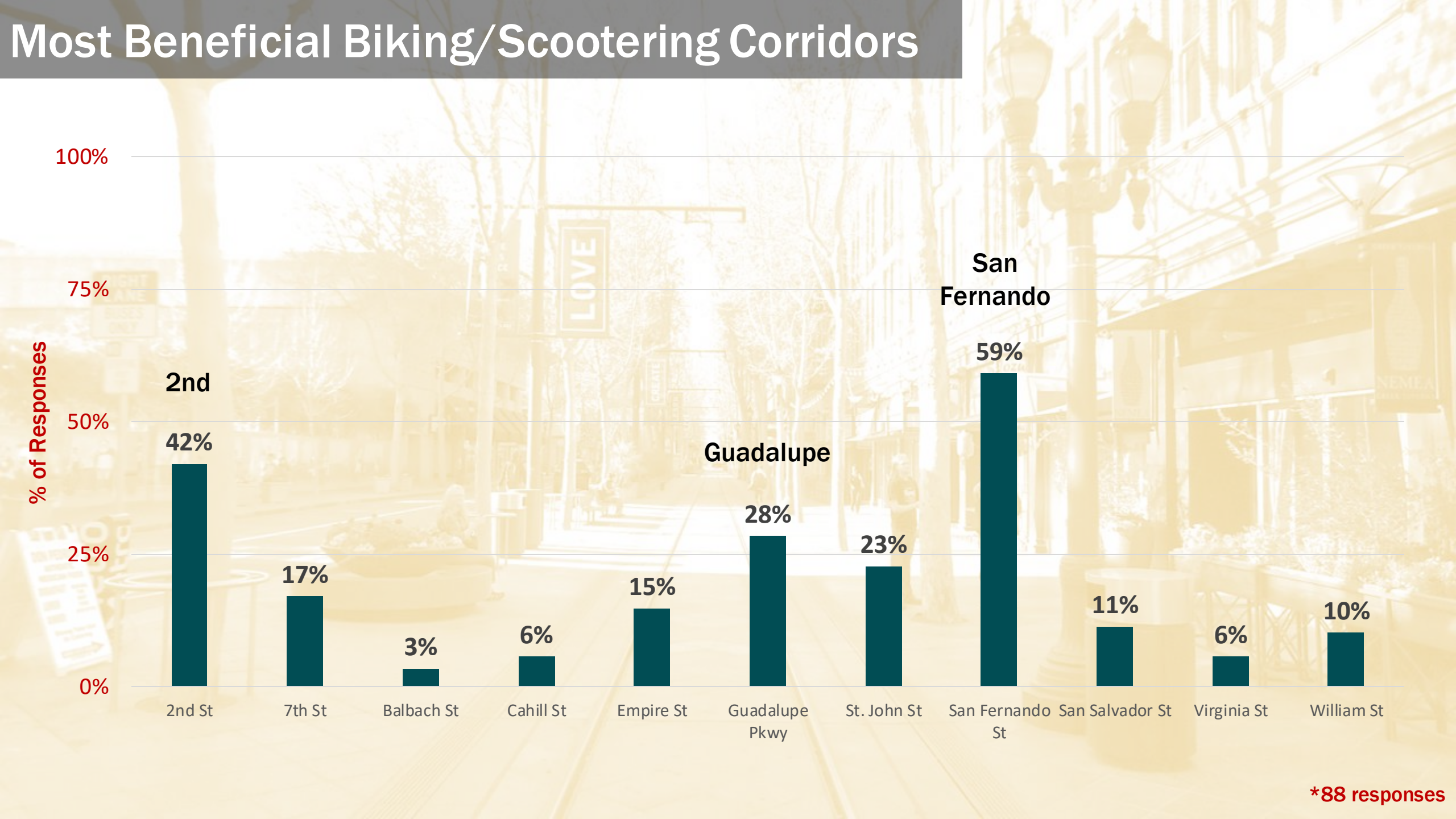
- Protected bike lanes/sidepaths
- Slow shared streets
- Raised bike paths
- Bikeshare stations
- Bike/scooter parking corals
- Bike lockers
- Curb extensions
- Traffic calming
- Bike signal
- Better lighting
- Signs and markings
- Nice landscaping
- Permeable pavement
- Bioswales
- Loading zones
- Short-term metered parking

PROPOSED DOWNTOWN

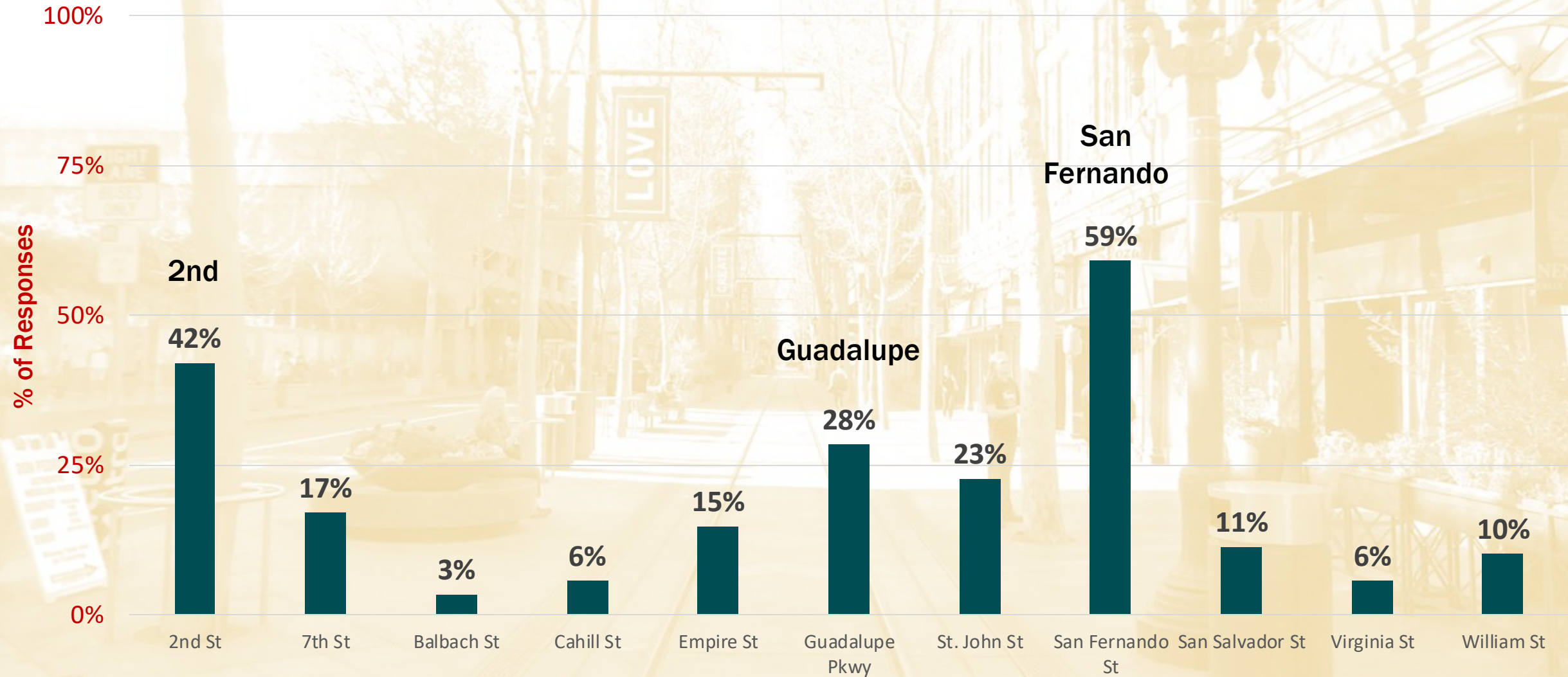
BIKE & MICROMOBILITY NETWORK

-  Premium Biking Corridors
-  Paseos/Walkways/Trails (pedestrian and bike only)
-  Other Biking Facilities
(Protected Bike Lanes or Bike Boulevards)





Most Beneficial Biking/Scooter Corridors



***88 responses**

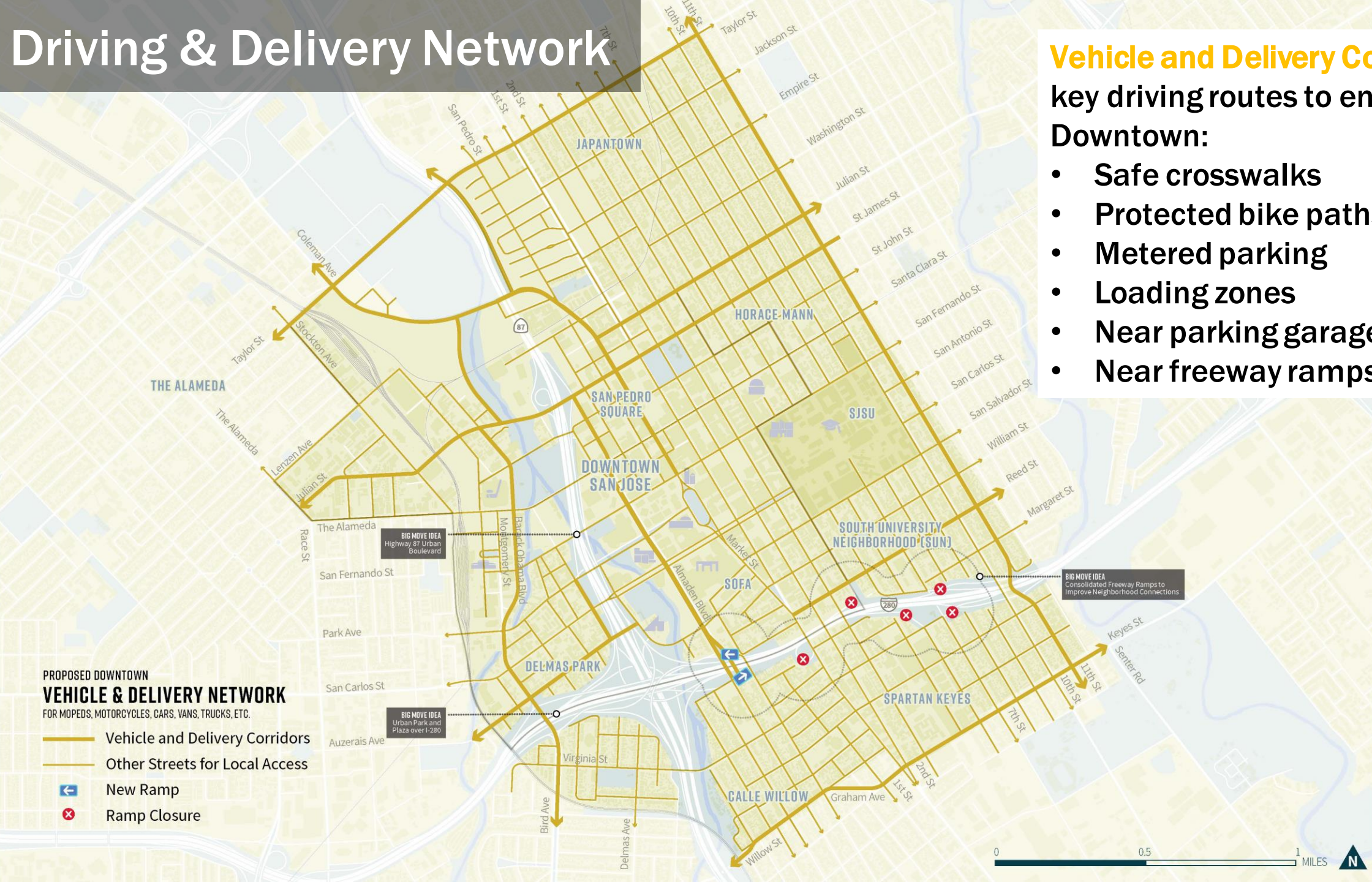
Driving & Delivery Network

Vehicle and Delivery Corridors

key driving routes to enter/leave

Downtown:

- Safe crosswalks
- Protected bike paths
- Metered parking
- Loading zones
- Near parking garage entrances
- Near freeway ramps

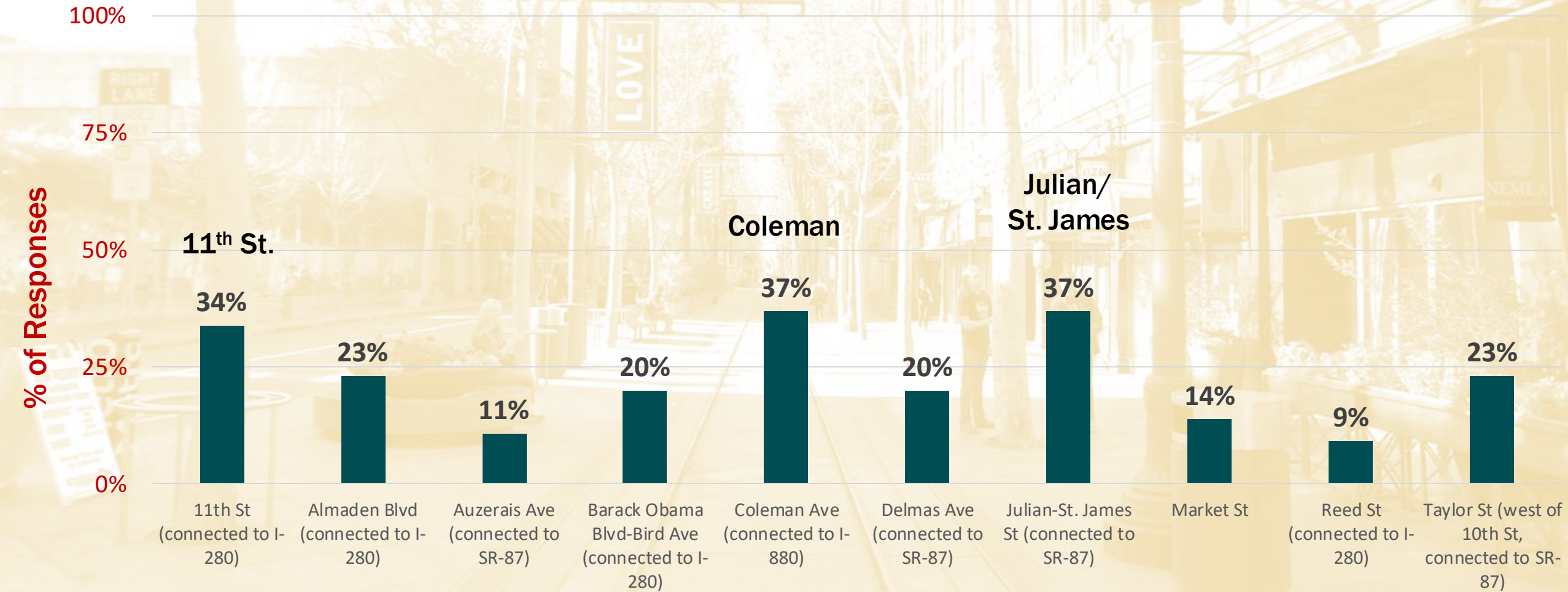


PROPOSED DOWNTOWN
VEHICLE & DELIVERY NETWORK
FOR MOPEDS, MOTORCYCLES, CARS, VANS, TRUCKS, ETC.

- Vehicle and Delivery Corridors
- Other Streets for Local Access
- New Ramp
- Ramp Closure

0 0.5 1 MILES N

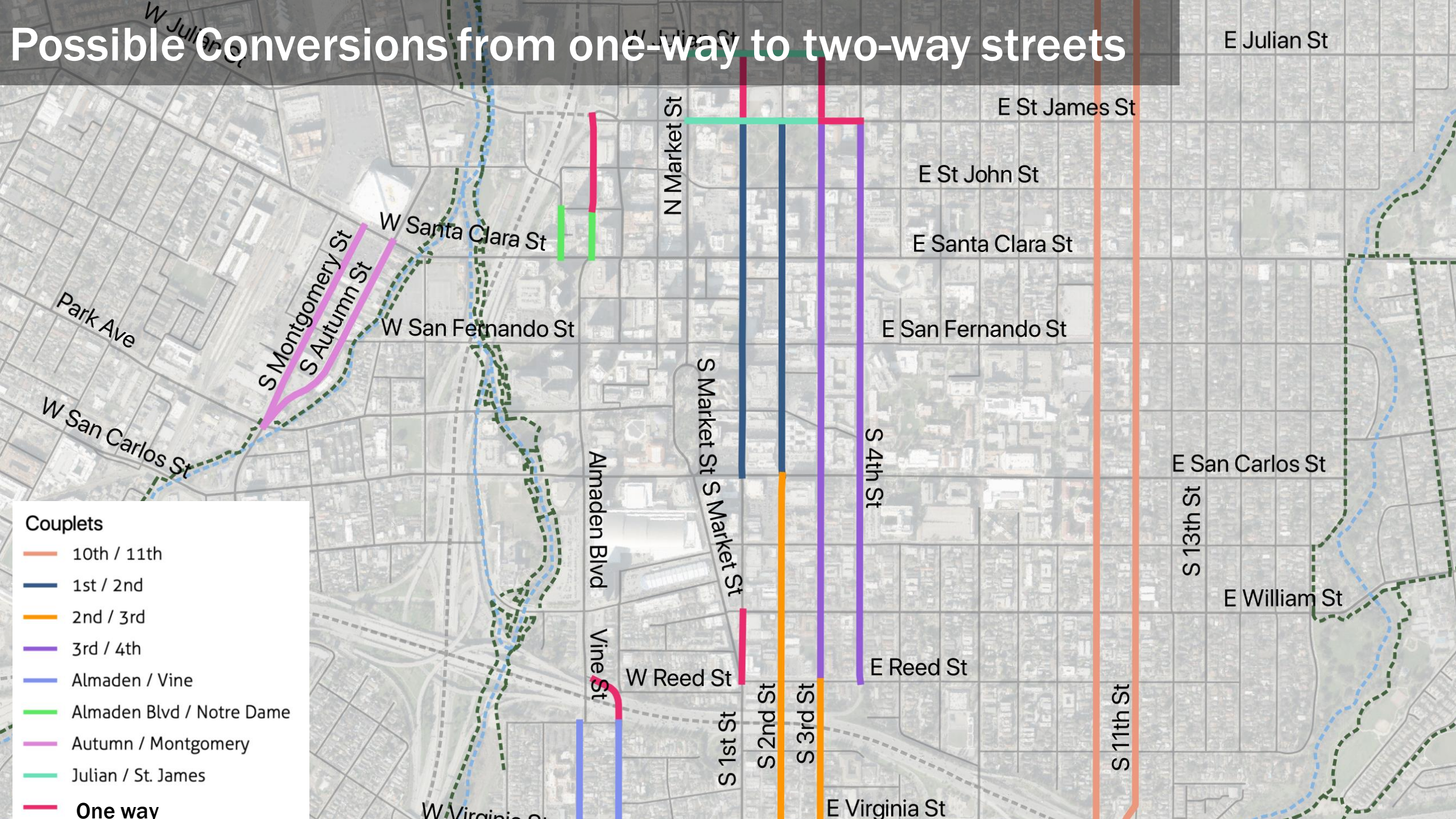
Driving & Delivery: Key Routes



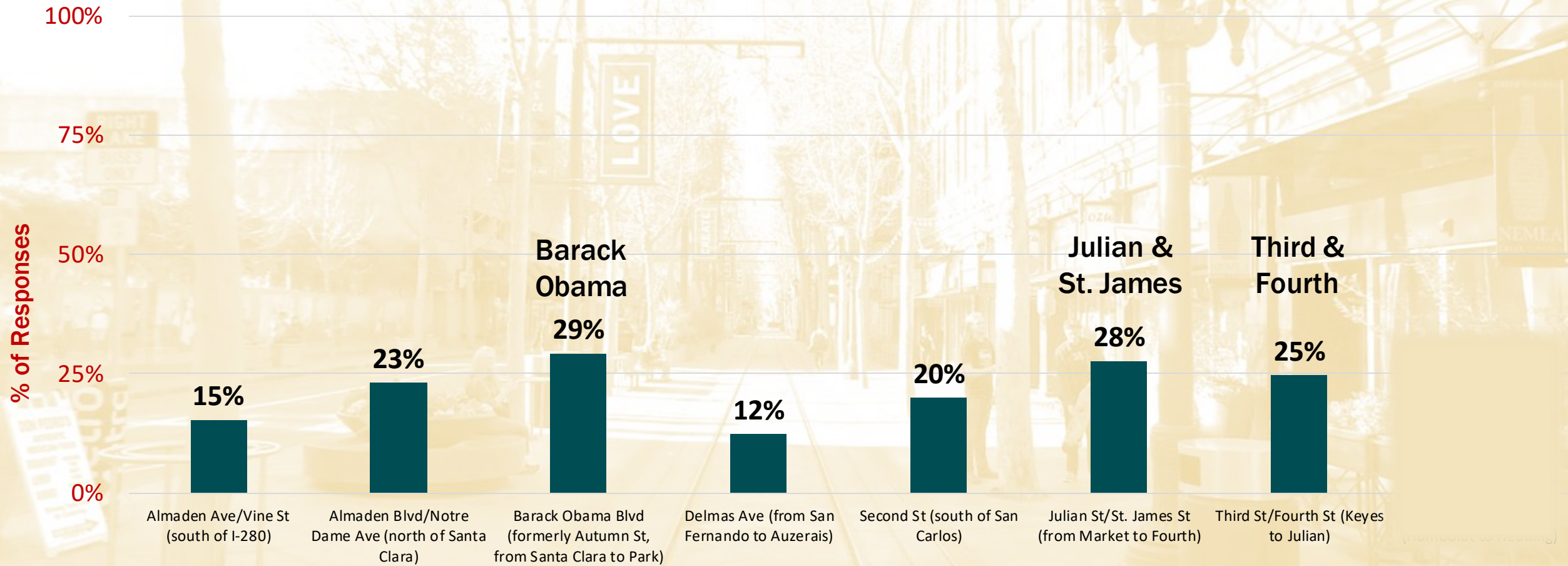
*65 responses

Possible Conversions from one-way to two-way streets





Preferred One-Way to Two-Way Street Conversions



*65 responses

Next Steps

- **Draft plan**
 - More detailed projects, programs, policies
 - Conceptual drawings for top-priority projects
 - Public review (May 2022)
 - Neighborhood/stakeholder meetings
- **Final plan**
 - Council hearing (September 2022)
- **Post-adoption (2023-2040)**
 - Design phases for streets & big moves
 - Funding opportunities
 - Implementation/construction phases

SJ



Thank you

Wilson Tam and Eric Eidlin
April 14, 2022

**DOWNTOWN
TRANSPORTATION PLAN**

Source: Tomwsulcer