

SPUR

Ideas + Action for a Better City

learn more at SPUR.org

co-presented by:



CALIFORNIA
High-Speed Rail Authority

MOVE LA
A PROJECT OF COMMUNITY PARTNERS

tweet about this event:

@SPUR_Urbanist

#CAHSR

#SPURDigitalDiscourse



**Amit Price Patel, AICP AIA LEED AP
DIALOG**

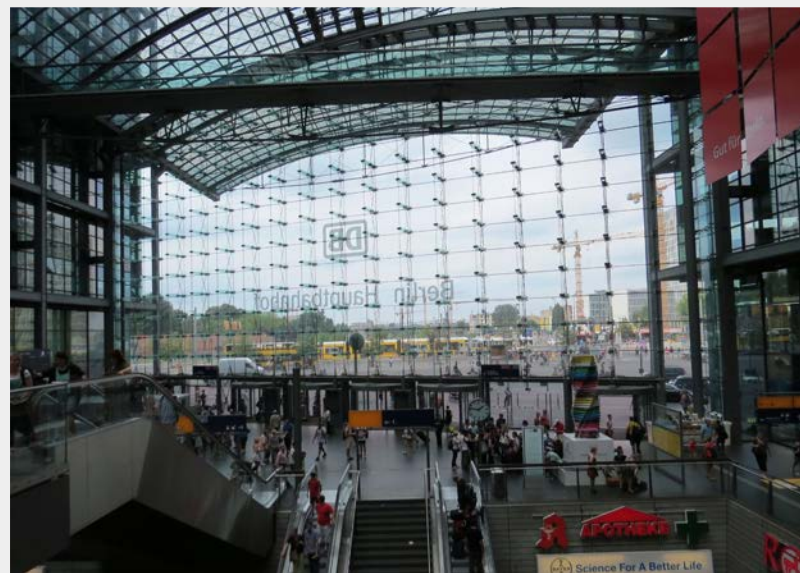
Senior Urban Designer + Architect
San Francisco + Vancouver
apricepatel@dialogdesign.ca



**Heidi Sokolowsky, Dipl.-Ing., LEED AP
Urban Field Studio**
Founding Partner
heidi@urbanfieldstudio.com



**Kokila Lochan, AICP
VIA Architecture**
Principal
Seattle | Oakland | Vancouver
klochan@via-architecture.com



How can cities
Think Big
and leverage the HSR network?



San
Francisco

Los Angeles



Gilroy

San Diego

Madera

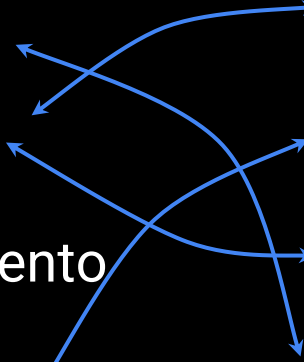
Kings/Tulare

Sacramento

Bakersfield

Murietta

San
Francisco



It's not just a line, it's a network



+



More Choices = Resilience + Competitive advantage



+



A richer and expanded perception of California



Stations as Destinations

The station can be a place that people travel to for the services and opportunities at the station's front doorstep.



Stations That Define Place

Stations can embody qualities of the community through its architecture and placement within the neighborhood fabric.



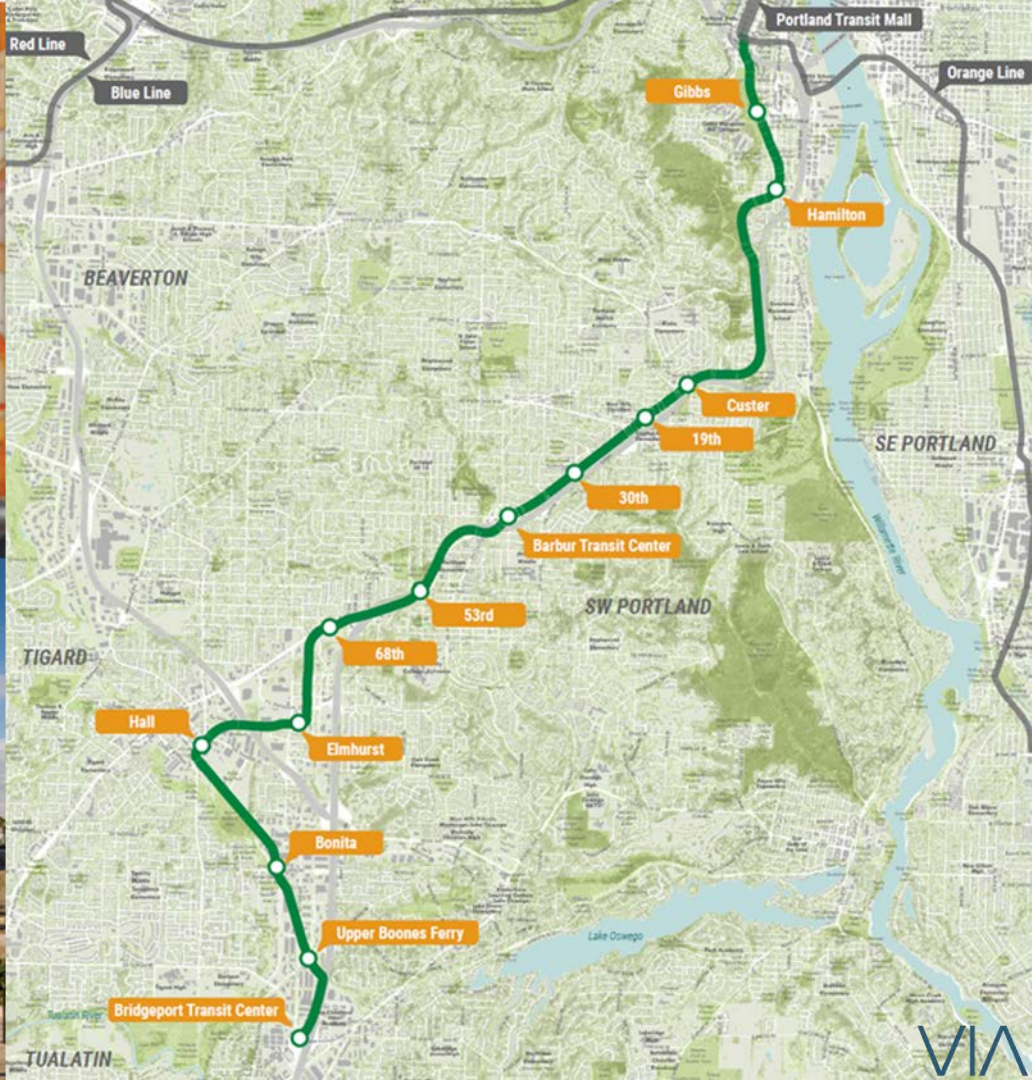
Stations as Connections

The station can be a point of arrival into the community for people, designed to help connect people to where they need to be.



Stations That Add to Place

Stations can create new plazas and landscape features that are places for people to enjoy, stay, and linger.





Stations as Destinations

The station can be a place that people travel to for the services and opportunities at the station's front doorstep.



Stations That Define Place

Stations can embody qualities of the community through its architecture and placement within the neighborhood fabric.



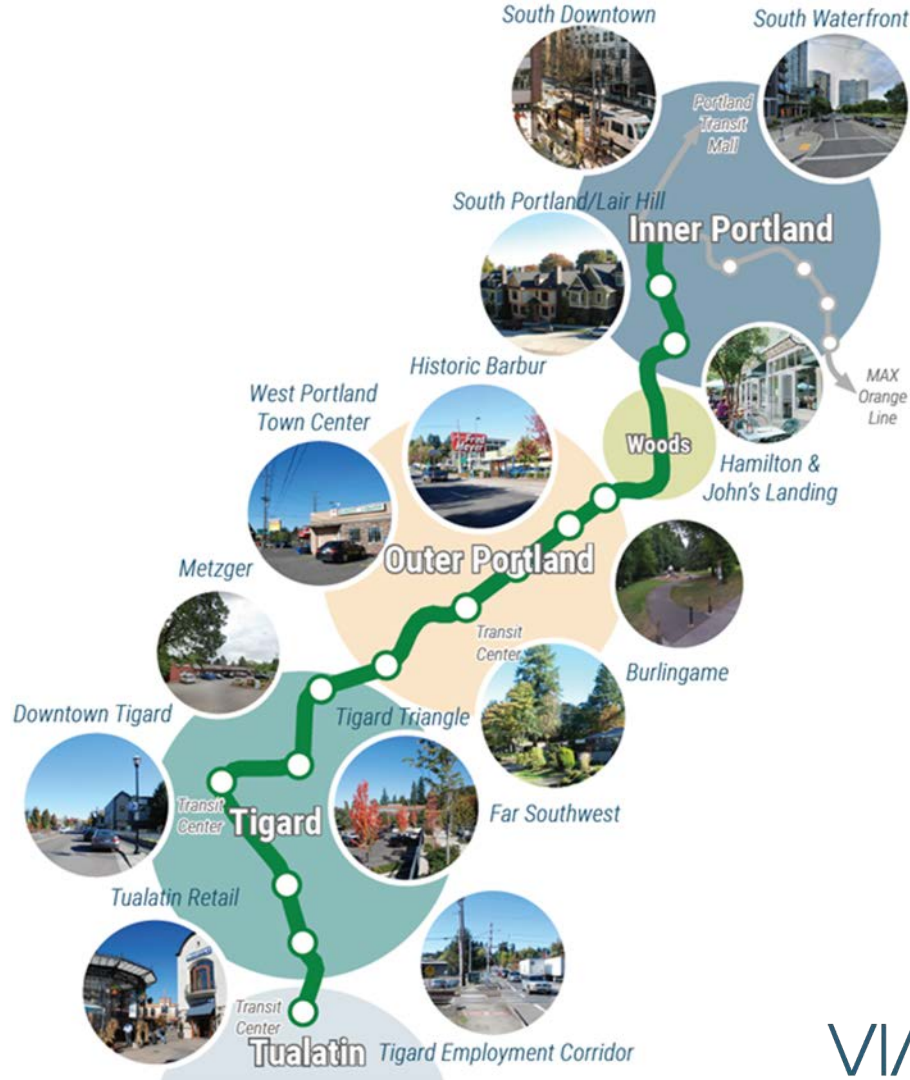
Stations as Connections

The station can be a point of arrival into the community for people, designed to help connect people to where they need to be.

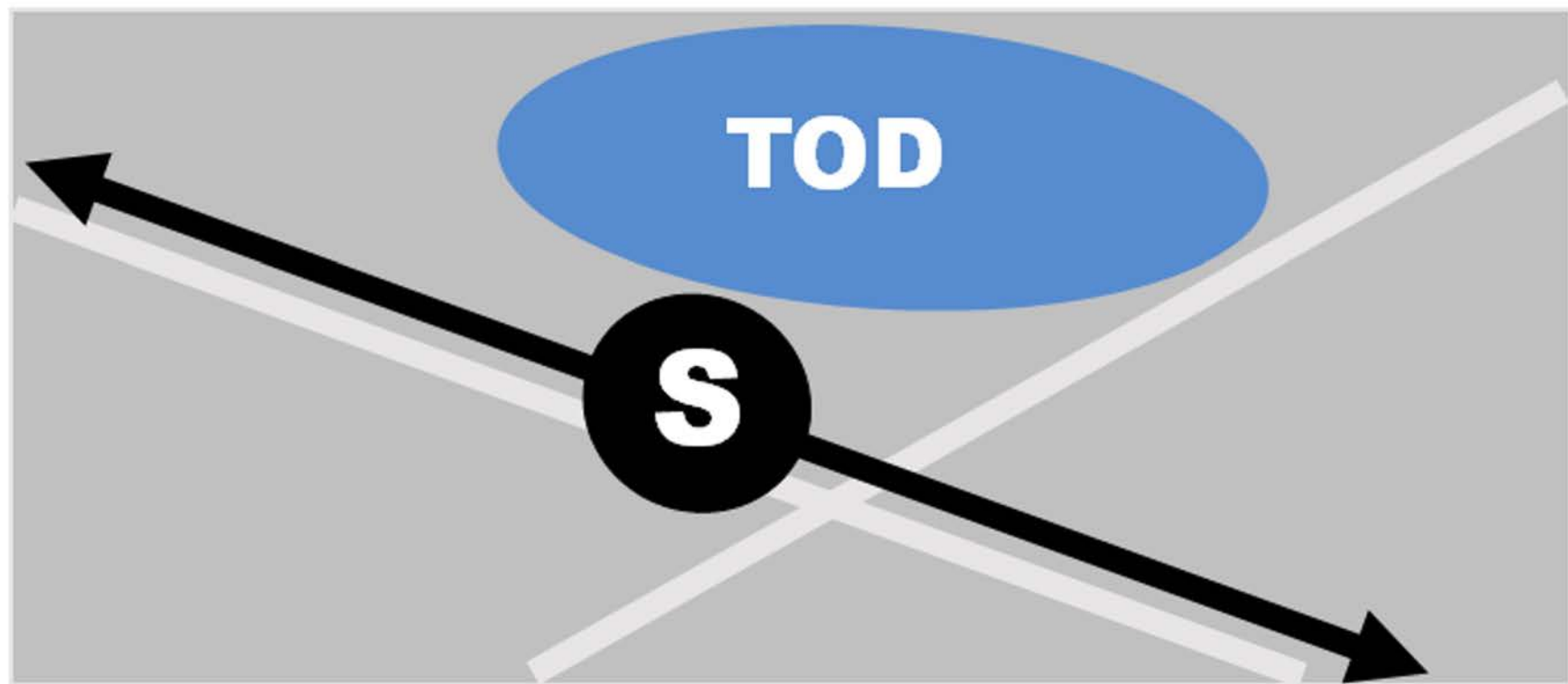


Stations That Add to Place

Stations can create new plazas and landscape features that are places for people to enjoy, stay, and linger.

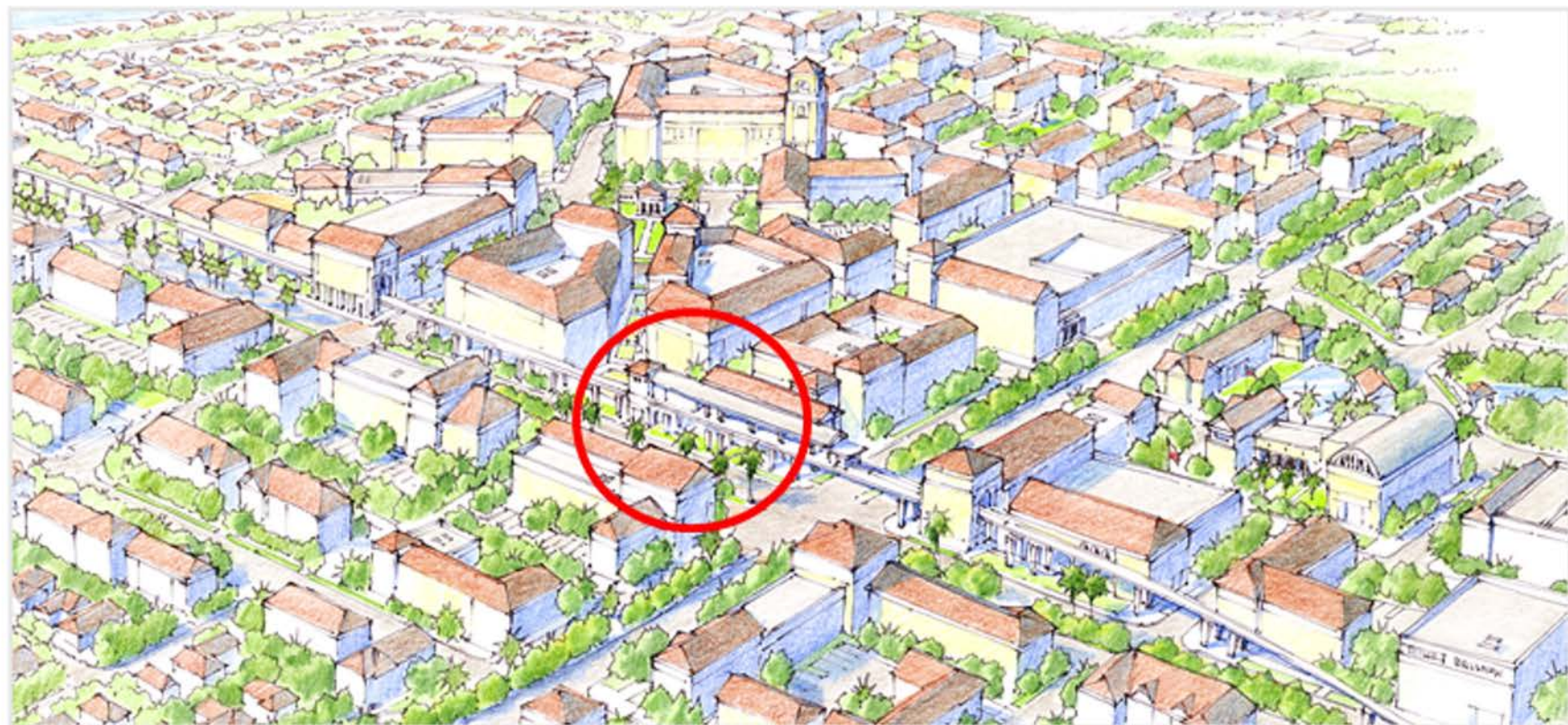


What happens here?



What happens here?

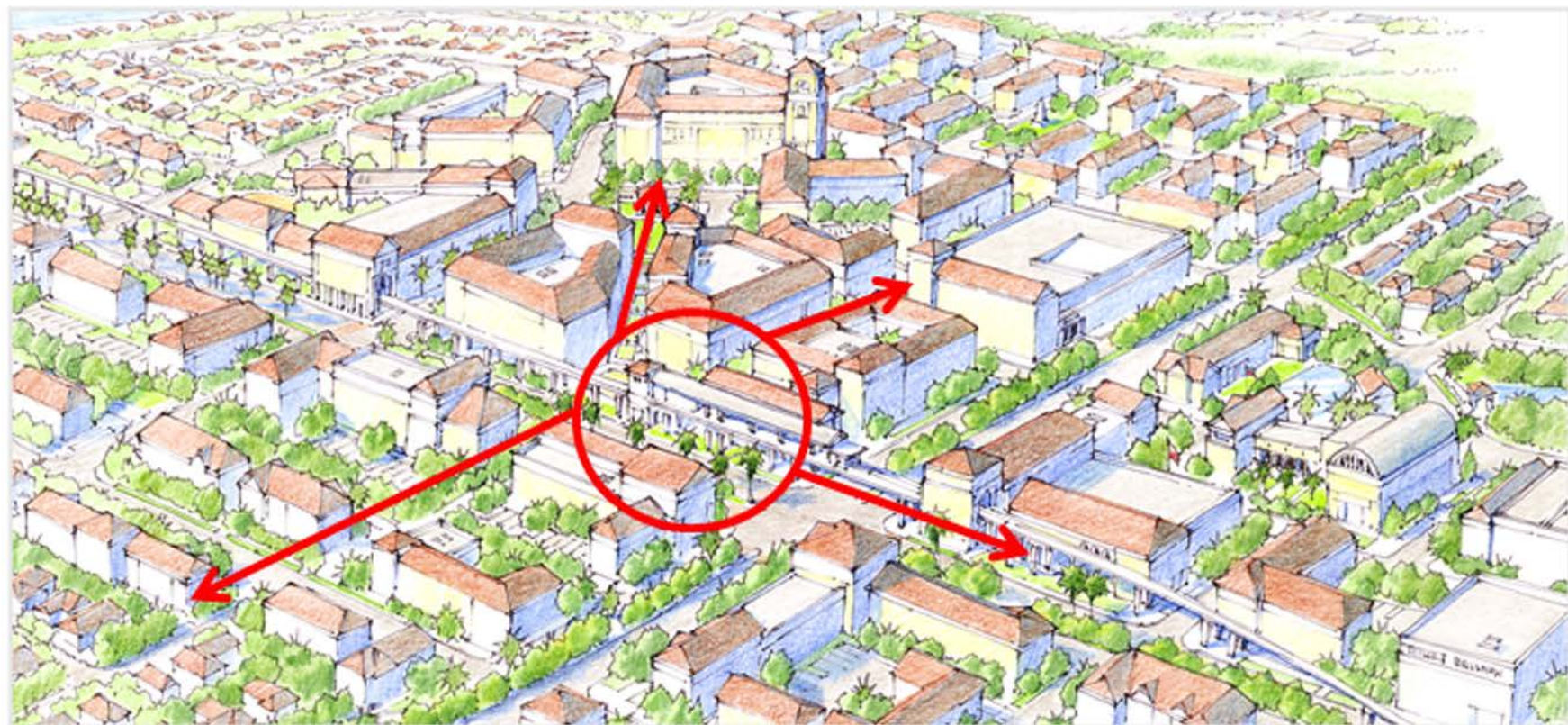
How does the station **fit** into the community?



What happens here?

How does the station **fit** into the community?

How does the station **interface** with the community?





A small city put on the map and connected to the larger region

Montabaur, Germany
Population: 14,400 (40,000 municipality)





Cologne

32 min



Montabaur



25 km/ 15 miles -
9 min. with HSR

30 min



ICE Max. Speed:
300 km/h
(186 m/h)



Limburg

43 min

48 min

19 min

Frankfurt Airport



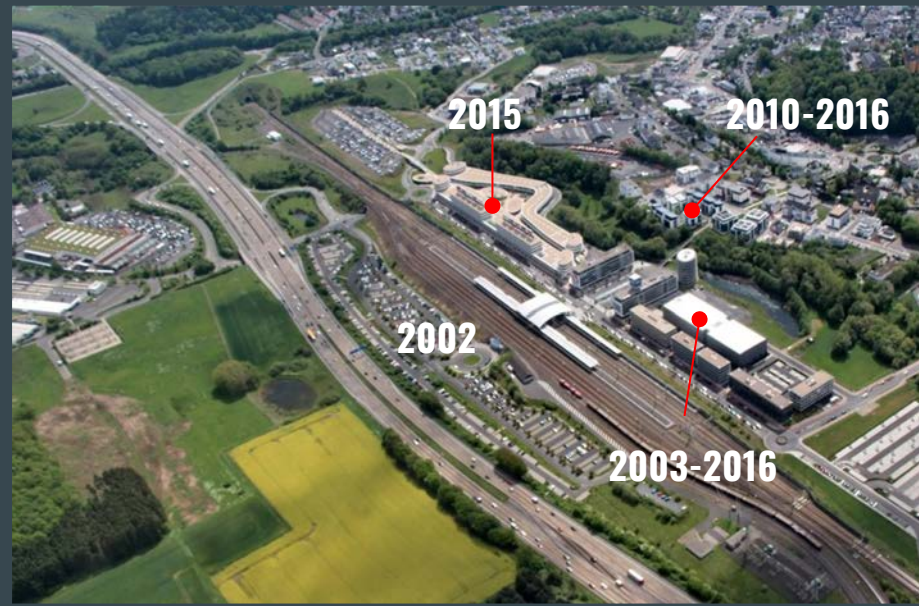
180 km/ 112 miles
2-hour drive without traffic



1997

Proximity to freeway and historic downtown

Station area attracted office, regional retail, and residential development (2,500 jobs; 110,000 sf retail; 550,000 sf office; economic growth + 2.7% in 4 years)



2015

80 train stops per day (40 HSR)
2,500 Passengers per Day
75% Commuters (more outbound than inbound)

400 Initial Parking Spaces, Expanded to 1,100 (underground and surface)

How can the
Power of Place
be amplified?

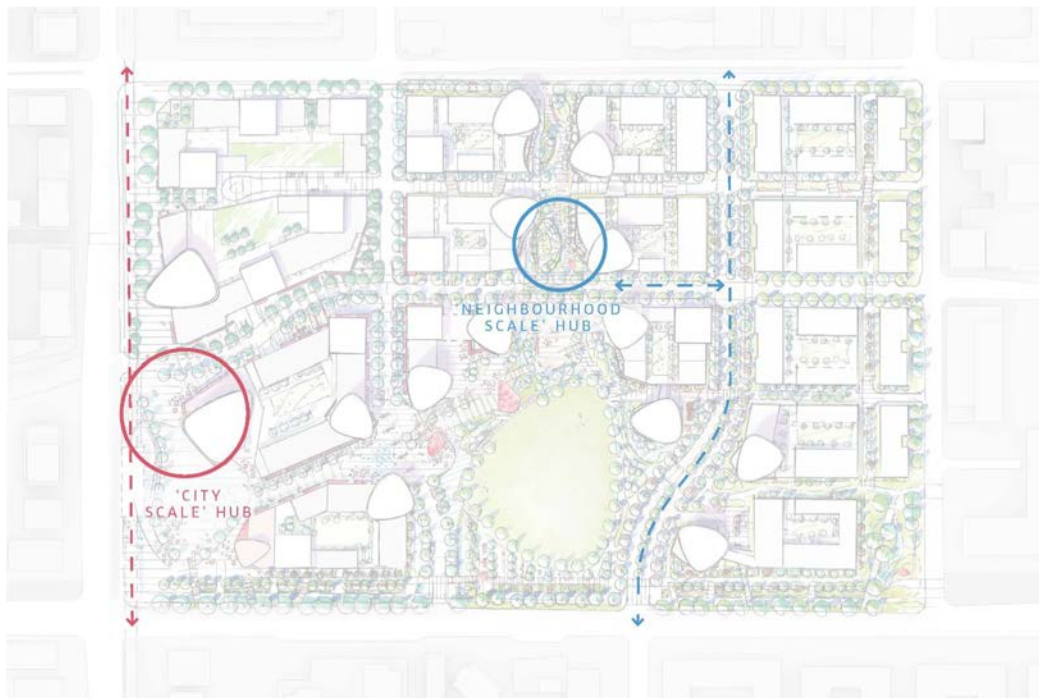


LANDSDOWNE STATION REDEVELOPMENT
RICHMOND, BC

Build a neighborhood (with a station in it)



- 1 KISS & RIDE (MIN. 5 STALLS)
- 2 CYCLE RACKS, LOCKERS, & REPAIR
- 3 CYCLE SHARE SPACES (MIN. 15)
- 4 FEATURE LIGHTING & SEATING OPTIONS
- 5 WEATHER COVERINGS AT BUILDING
- 6 WAYFINDING SIGNAGE
- 7 RETAIL AMENITIES
- 8 HANDYDART PICK UP / DROP OFF
- 9 SERVICE VEHICLE ACCESS/PARKING (MIN. 3)
- 10 PEDESTRIAN/CYCLIST PARKADE ACCESS
- 11 ENHANCED PEDESTRIAN CONNECTION



- 1 CYCLE PATHS & AMENITIES (RACKS, REPAIR)
- 2 CYCLE SHARE SPACES (MIN. 15)
- 3 VARIOUS SEATING OPTIONS
- 4 WEATHER PROTECTION & WAYFINDING
- 5 PARKING W/ EV PLUG-IN SPACES
- 6 SHUTTLE/HANDYDART PICK UP / DROP OFF
- 7 TAXI PICK-UP / DROP-OFF (MIN. 5 STALLS)
- 8 FEATURE LIGHTING
- 9 VARIOUS AMENITIES (WATER, POWER, ETC.)
- 10 ACCESS TO BUS STOPS ON COONEY
- 11 ENHANCED PEDESTRIAN CONNECTION

LANDSDOWNE STATION REDEVELOPMENT
RICHMOND, BC

Scale to walkable distances



Build a Station of its Time and Place

VALLEY LINE LRT
EDMONTON, AB

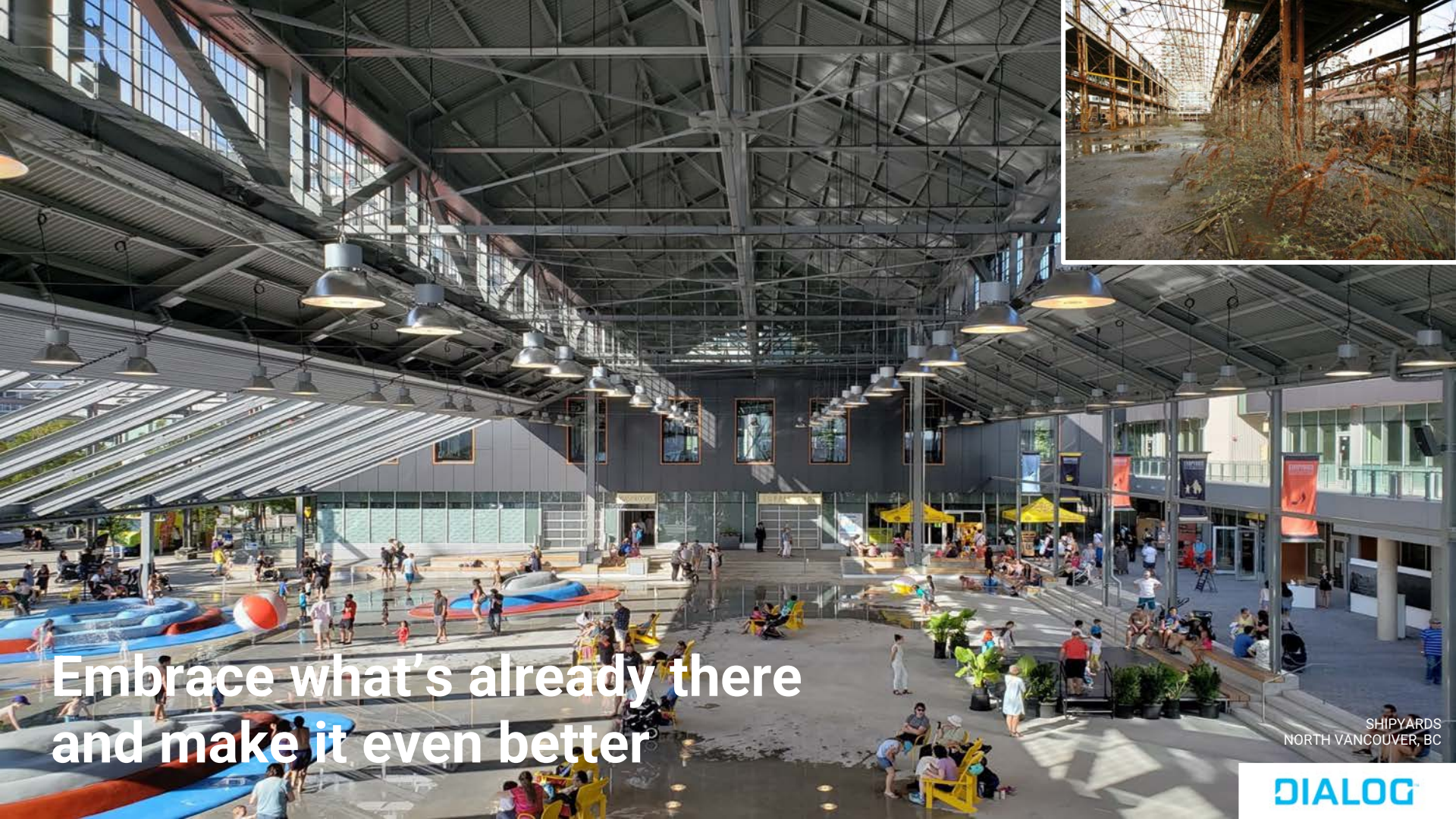
DIALOG



Help people find their way

CANADA LINE
VANCOUVER, BC

DIALOG



Embrace what's already there
and make it even better

SHIPYARDS
NORTH VANCOUVER, BC

DIALOG



Metrotown Station, Vancouver BC

Station as place

Station canopy retrofit resulted in dramatic architecture that defines place:

- Plaza with high passenger capacity
- Major bus transfer and interchange
- Bus to rail transfer
- Mall and surrounding mixed use development

The Station is Invisible

- One of the top 10 best American public places
- Two LRT stops designed as part of the square, (now expanded to three)
- Station budget turned over to Friends of Pioneer Square
- Transit integral part of the sense, smell, sight, feel of the square



Pioneer Courthouse Square, Portland, OR



What else can Stations be?

Community places - can change over time
The place you meet friends over coffee;
The farmers market over the weekend;
Collecting dry cleaning on the way home
from work

-
-
-

Stations can be places to fall in love!



Fresno HSR Station: Connecting two sides



The station site today





City of Fresno Station District Master Plan (2018)

TOD and Revitalization



Include the Community



View from station site to Downtown

Integrate Historic Buildings



Historic Southern Pacific Depot



Historic Pullman Shed



Connect to Downtown

How can the
Human Experience
be prioritized?



Quality = Respect

CANADA LINE
VANCOUVER, BC

DIALOG



CANADA LINE
VANCOUVER, BC

Details Matter



LRT NORTHEAST SEGMENT
CALGARY, AB



EVERGREEN STATION
VANCOUVER, BC

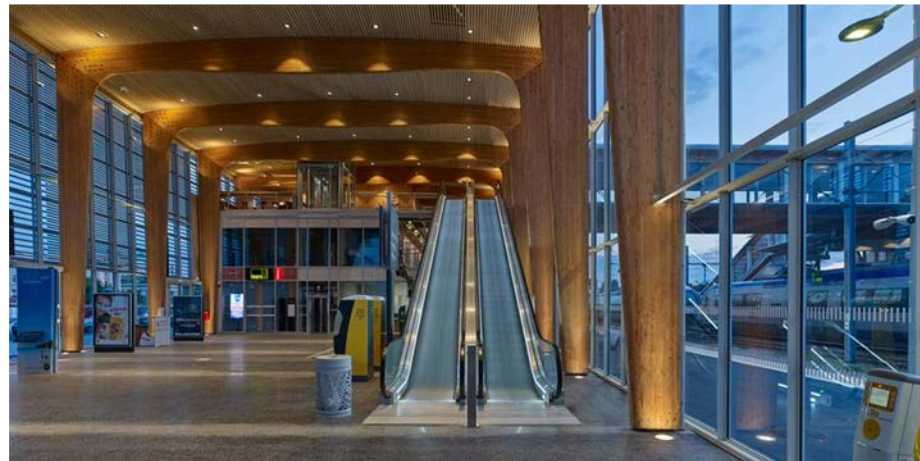


CHINOOK CENTRE PEDESTRIAN BRIDGE
CALGARY, AB

Delight, Joy, Surprise



Køge North Train Station, Denmark



Lorient Station, France



Miaoli City, Taiwan

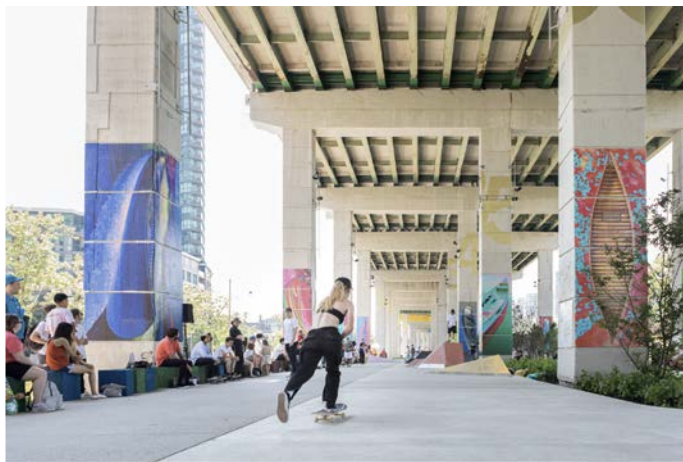
**Welcoming and
Comfortable**



Västerås, Sweden - Rendering by BIG



Transbay Terminal, San Francisco



Toronto Bentway

High-Quality Open Spaces



Seamless Transit & Mobility Connections



Sustainable Design





**MOVE AND
CONNECT PEOPLE**



**MAINTAIN AND
CREATE
EQUITABLE
COMMUNITIES**



**PRESERVE AND
RESTORE NATURAL
ENVIRONMENT**



**DESIGN FOR THE
FUTURE**

VISION FOR SOUTHWEST CORRIDOR EXAMPLE: HAMILTON STATION



Wayfinding elements are highly visible from both the station platforms and from the surrounding street



Streetscape improvements will introduce a climate-appropriate plant palette and improve the urban tree canopy along the project corridor



A mix of existing and future uses are easily and safely walkable and bikable from the station



Raised protected bike lanes and wide sidewalks create a more complete multimodal network

Move and connect people

Project vision for corridor improvements



Existing Conditions



VIA

WORKING TOGETHER FOR TRANSIT-ORIENTED COMMUNITIES



Mature tree canopy and stormwater features, over time, can create a more attractive street-level pedestrian experience while protecting rivers, streams and oceans.

Private mobility options can complement and promote transit use. The project is assessing the need for future mobility services at locations within and outside the right-of-way.

The presence of a walkable, compact and mixed community near stations helps to encourage transit use, and offers better mobility for non-driving populations.

How can cities
Unlock Opportunity
and build a pro-transit culture?

HSR Access to:

Education
Jobs
Recreation

Amenities:

Parks/ Plazas
Culture/ Arts
Resiliency

Hubs

Development:

Mixed Income housing
Mixed Use
Small Business opportunities

Advantages over flying and driving:

Comfortable
Reliable
Faster
Affordable
Center to Center



Show people “what’s in it for me”



Mix it up + Build Value

THE RIVER
CALGARY, AB



Small = more accessible = more equitable



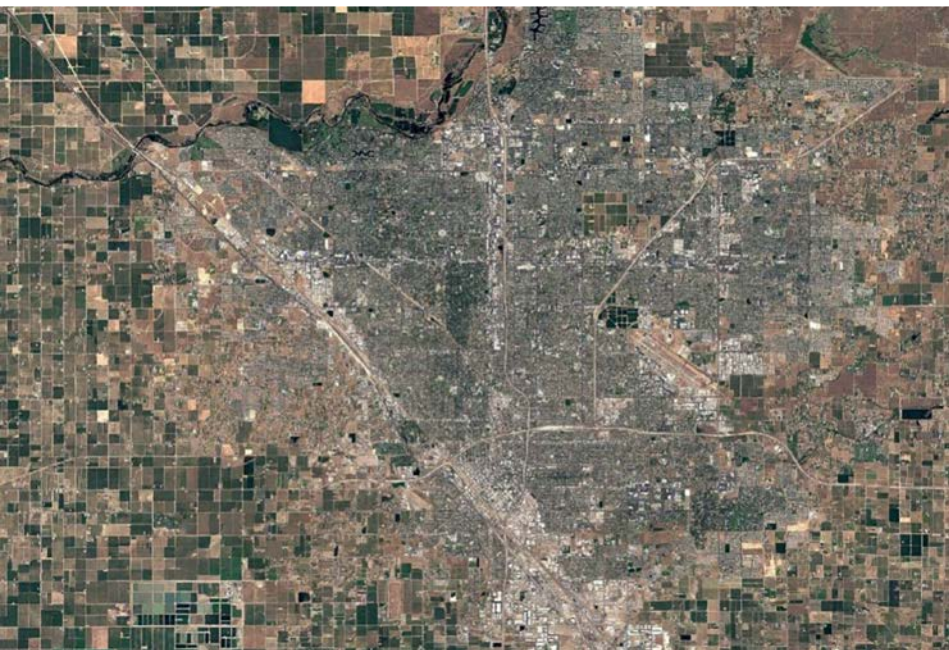
FUTURE OVERBUILD

BROADWAY SUBWAY
VANCOUVER, BC

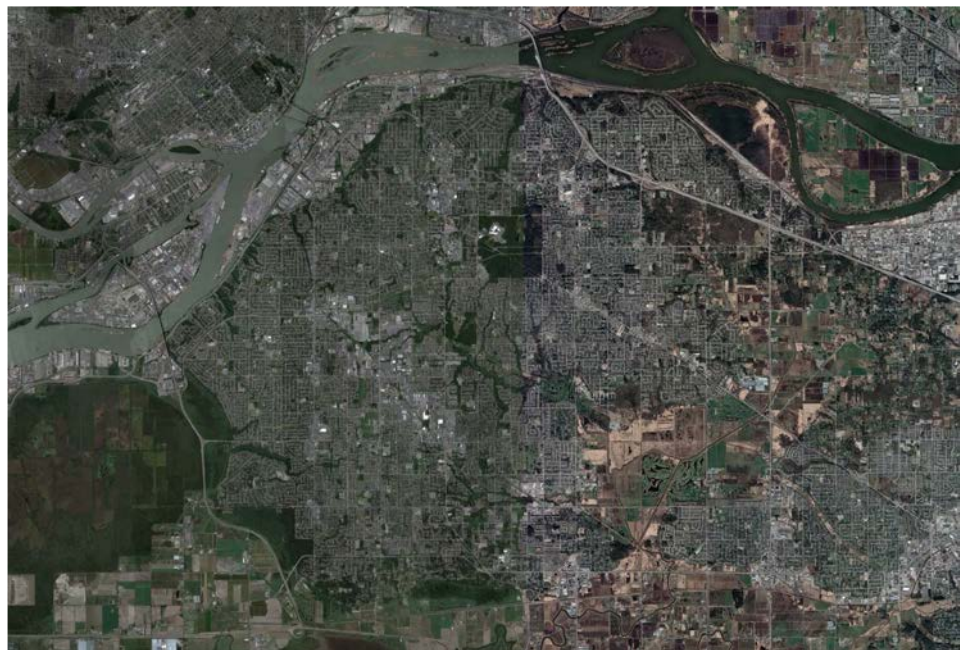
Leave space and flexibility for changing needs



Early Site Activation



FRESNO
542,000 in 2020
817,000 projected in 2040
116 sq. miles



SURREY, BC
580,000 in 2021
783,000 projected in 2041
122 sq. miles

Vision: Find shared goals

“Excellent transit through convenient, quick travel choice that connects all customers and builds ridership within a livable community.”

- Mission Statement, TransLink

“Street-oriented LRT will transform Surrey into connected, complete and livable communities, making the Metro Vancouver Region more vibrant, accessible, competitive and sustainable.”

- Vision for LRT, City of Surrey

Vision: Find shared goals - **they do exist!**

“Excellent transit through convenient, quick travel choice that connects all customers and builds ridership within a livable community.”

- Mission Statement, TransLink

“Street-oriented LRT will transform Surrey into connected, complete and livable communities, making the Metro Vancouver Region more vibrant, accessible, competitive and sustainable.”

- Vision for LRT, City of Surrey

- 1976 The Livable Region
- Livable Region Strategic Plan (1993)
- Transport 2021 (1993)
- South of Fraser Area Transit Plan (2008)
- Metro Vancouver's Regional Growth Strategy (2011)
- TransLink's Regional Transportation Strategy (2013).
- Mayor's Council 10-year Vision

Connected:

Connecting people, places and communities quickly with great transit at the doorstep.



Complete:

Streets that are safe, attractive and comfortable for all to get around.



Liveable:

Livable communities are unique, beautiful and healthy places where people and jobs want to be.



~4,650

DIRECT
INTERACTIONS



~475

OPEN HOUSE
PARTICIPANTS

3,980+



ONLINE SURVEY
RESPONSES



~80

POP UP ENGAGEMENT
COMMENTS

~110

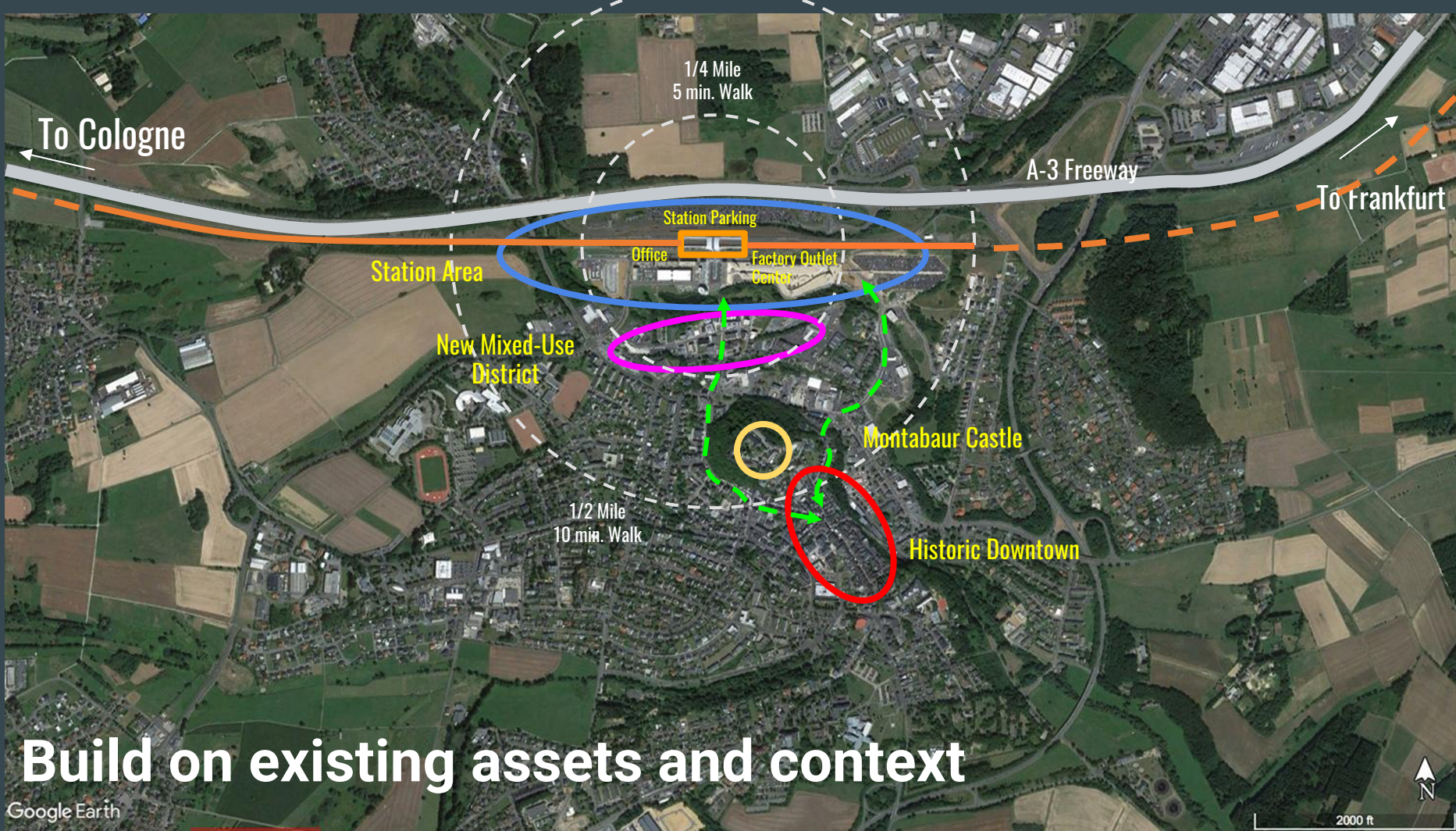
WORKSHOP
PARTICIPANTS



104TH AVENUE -GUILDFORD TOWN CENTRE
SURREY, BC

Deep and Diverse Engagement

DIALOG



To Cologne

1/4 Mile
5 min. Walk

A-3 Freeway

To Frankfurt

Station Area

Station Parking

Office

Factory Outlet
Center

New Mixed-Use
District

Montabaur Castle

1/2 Mile
10 min. Walk

Historic Downtown

Build on existing assets and context

Google Earth



2000 ft



Station plaza, bus terminal, and office development



Pedestrian connections



Historic Downtown



Retail

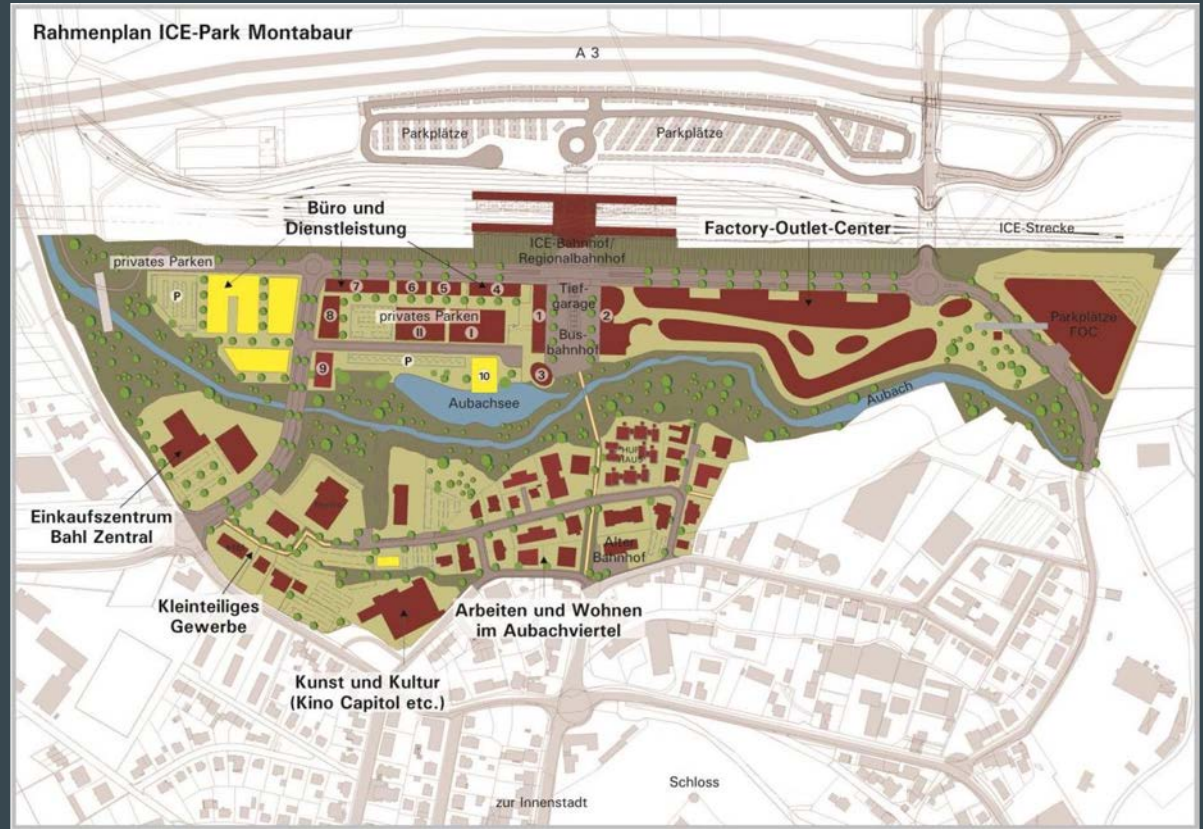


Mixed-use district around old train station



Public Art

A mix of ingredients



Adjustments to plan and uses over time

You get to design the future.

Show people “what’s in it for you”

Prioritize the public realm, maximize choice and opportunity, and allow flexibility

Partnerships for High Quality Urban Spaces
station siting to enhance existing urban open spaces

Connected Businesses and Retail
local partnerships to strengthen commerce

Passenger Drone Port
future innovative mobility solutions to integrate into transit plaza

Accessible Station
lifts, ramps, and stairs to improve station access for users of all ages and abilities

Work and Learning Hubs
modular Network Rail Member shared learning and workspaces to adapt to local community needs

Integrated Development
sustainable and equitable work and housing options next to transit to support community growth



Connective Infrastructure
a new overpass structure to accommodate future growth and

One Virtual Ticket
integrated AI and supplemental information kiosks to provide passenger information needs

Freight Hub
modernizing rail with the shipping infrastructure of the future, including passenger interface

Focal Point
memorable station house and wide entry plaza to serve as a point of arrival for transit users

Active Transportation
secure cycle parking and cycle routes to encourage multi-modal access to transit

Green Infrastructure
stormwater planters, green roofs, and integrated photovoltaics to support environmental health