

# Central Bikeway Feasibility Study

SPUR

July 28, 2020

# Background – How did we get here?



- Currently **800** miles of bikeway in County, **200** miles of bicycle paths
- VTA is proposing a cross-County network of Bicycle Superhighways
- Allow people of all ages and abilities to connect on low-stress bikeways across the County



# Problem – Gaps and Safety Concerns

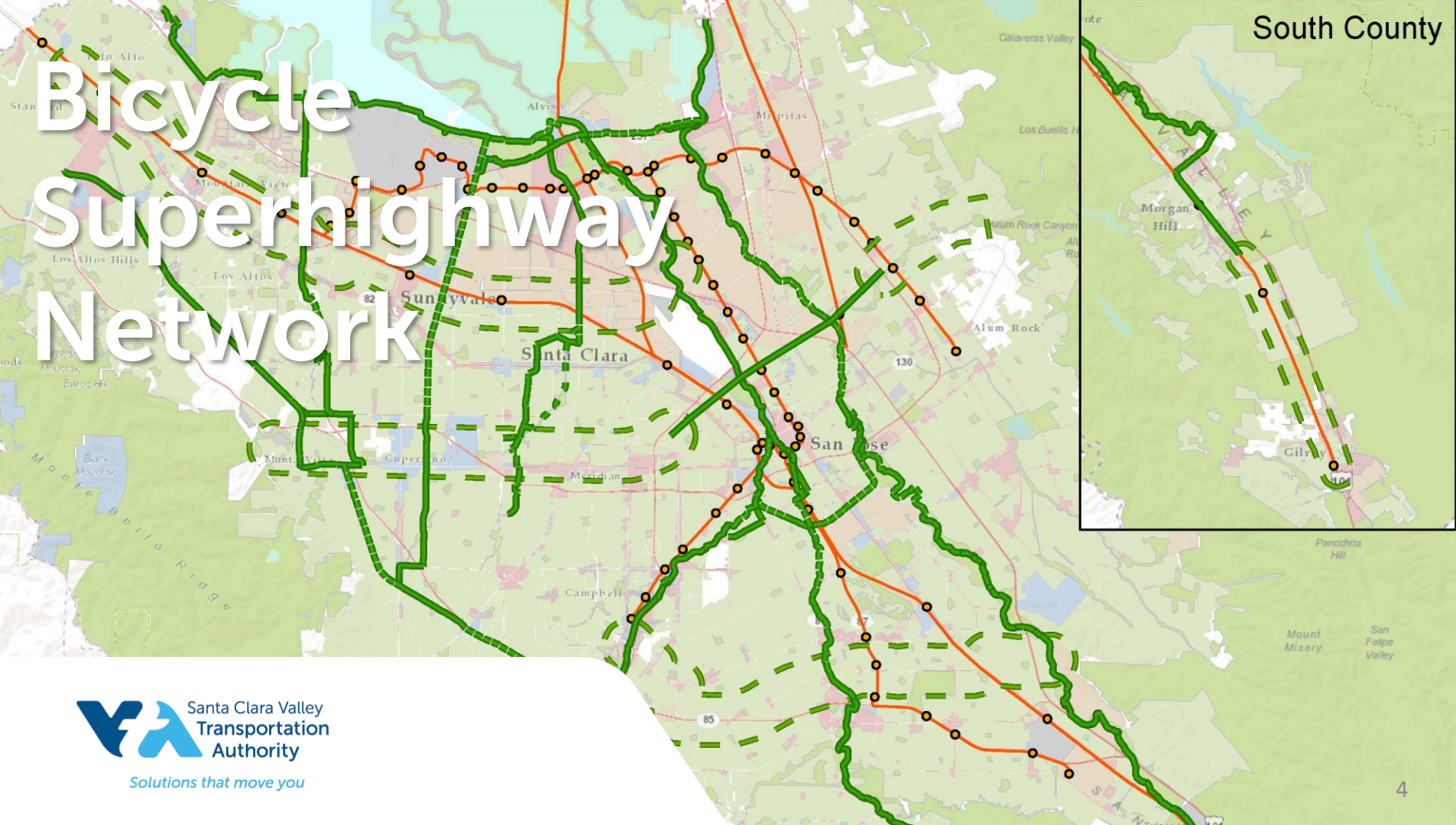


- Countywide bike plan (2018)
  - Barriers
  - Crossings
  - Gaps
  - Network connections
- People want to avoid high-speed, stressful roadways
- No long distance safe, low stress, east-west bicycle connections





# Bicycle Superhighway Network



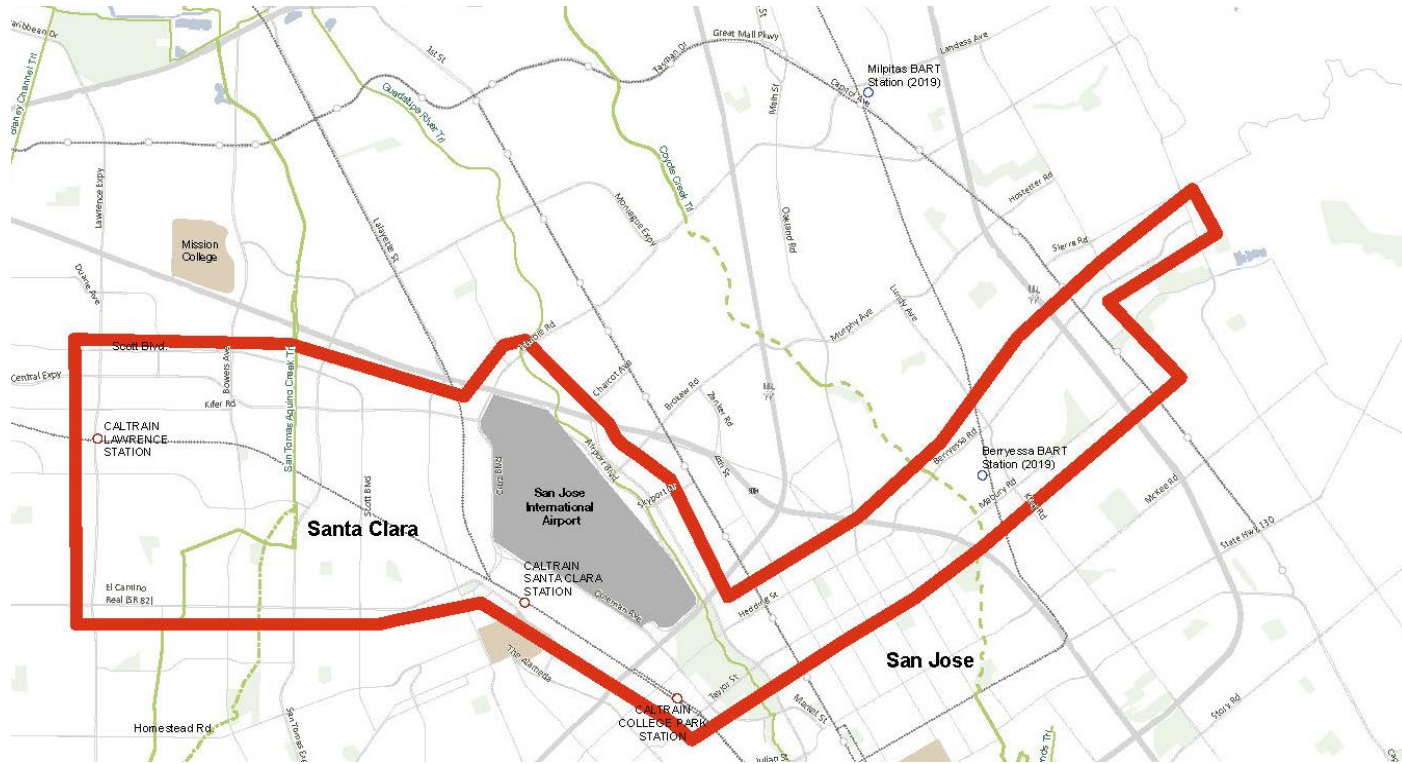
# Vision: Superhighways



- Routes separated mainly from automobiles – 12 candidate corridors
- High-quality, joyful, connections throughout County
- Builds on existing trail network
  - Guadalupe River Trail
  - Bay Trail
  - Stevens Creek Trail
- Includes on-street bikeway currently being planned by local agencies



# Central Bikeway Feasibility Study



# Objectives

- Involve communities, especially disadvantaged communities in developing preferred alignment and design for corridor; co-create
- Support other agency plans and land-use goals along corridor, while addressing conflicts between plans
- Incorporate innovative solutions for a functional and joyful bikeway
- Identity short- and long-term solutions, funding strategies, and an implementation plan

