A large, bright yellow, three-dimensional pumpkin sculpture with triangular cutouts for eyes and a jagged mouth. It sits on a grassy hill. In the background, a city with many buildings is visible, along with hills in the distance. A few people are sitting on a bench in front of the pumpkin. A concrete wall is in the foreground.

SPUR Program: Opening Up Lake Merritt's  
Cultural Institutions  
December 9, 2019

**OAK**  
LAND  
**MUSEUM**  
OF **CA**

# Big Results Small Changes

### #1 Museum in Support of District-Wide Changes

- Respond to and enhance planned or completed City of Oakland, Bart, Laney College and private improvements to the neighborhood
- Improve pedestrian experience of building with lighting, plantings and removal of problem areas
- Pedestrian way created from 12th and the Lake to 10th, connecting to Lake Merritt, Kaiser, Bart, Laney, etc.

### #2 Museum in Support of and Enhancing Community Engagement

- Open up the massive 4 block building on 10th and 12th Streets
- Expand community access to and use of the Gardens as a public amenity
- Reduce accessibility barriers such as distance to entries and other routes of travel
- Improve community event amenities in the Gardens and at 10th Street particularly for Friday nights
- Café and Program space can be a neighborhood amenity,

### #3 Gardens in Service of Architecture

- Evolution over time – little remaining healthy material
- Retain healthy specimen trees
- Be more strategic in planting and
- Be more restrained in planting so architecture is revealed as in original design intent.

### #4 Gardens in Service of Programs

- More sustainable plantings and maintenance needs
- California focused for interpretation with Natural Science Programs

### #5 Gardens in Service of Community Uses

- Shade protection
- Stage for performances
- Paving adjustments for informal and formal gatherings
- Power and lighting improvements

# Connecting to the City -1969

LAKE MERRITT

COURTHOUSE

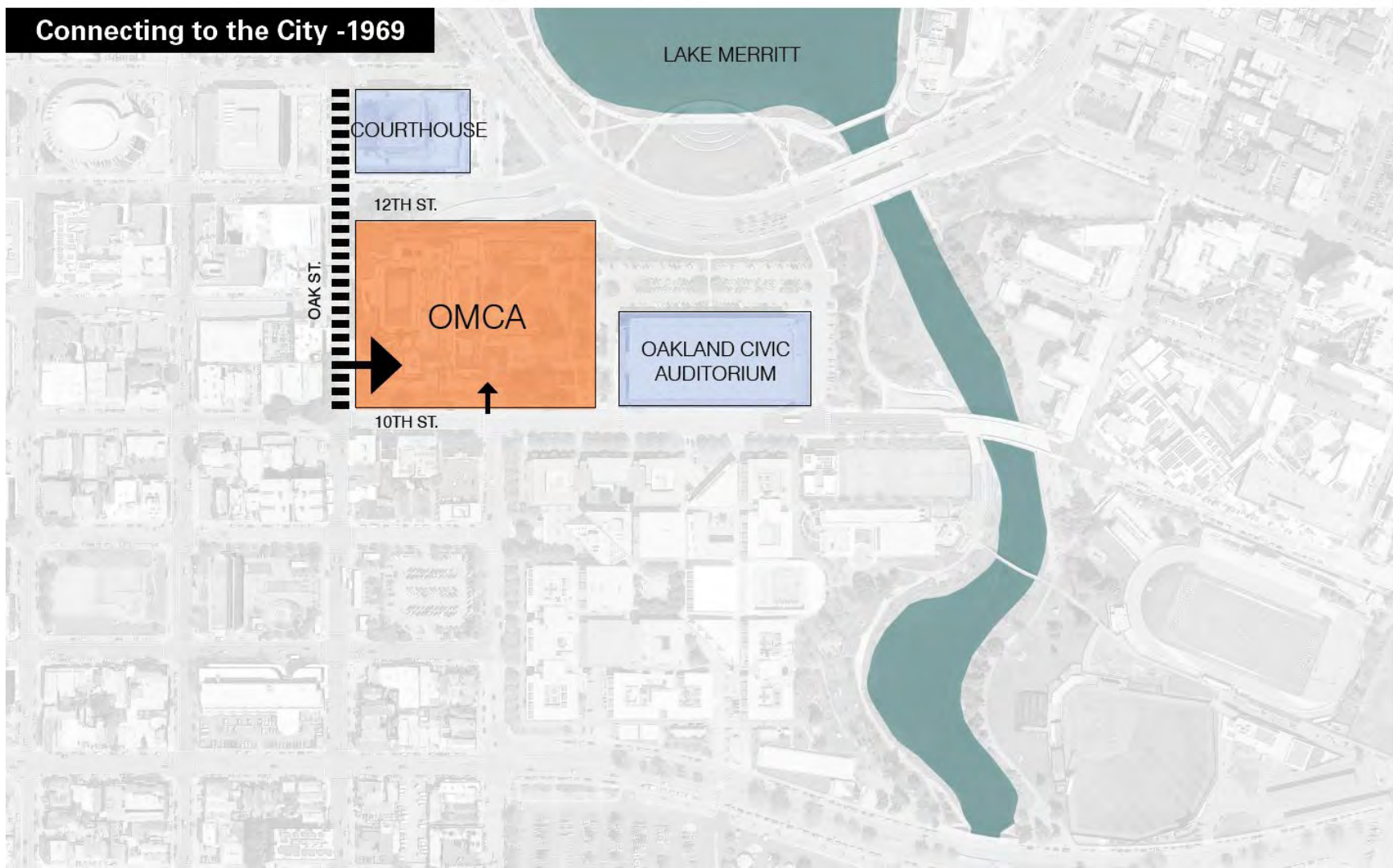
12TH ST.

OAK ST.

OMCA

OAKLAND CIVIC  
AUDITORIUM

10TH ST.



# Connecting to the City - 2009

LAKE MERRITT

COURTHOUSE

12TH ST.

OAK ST.

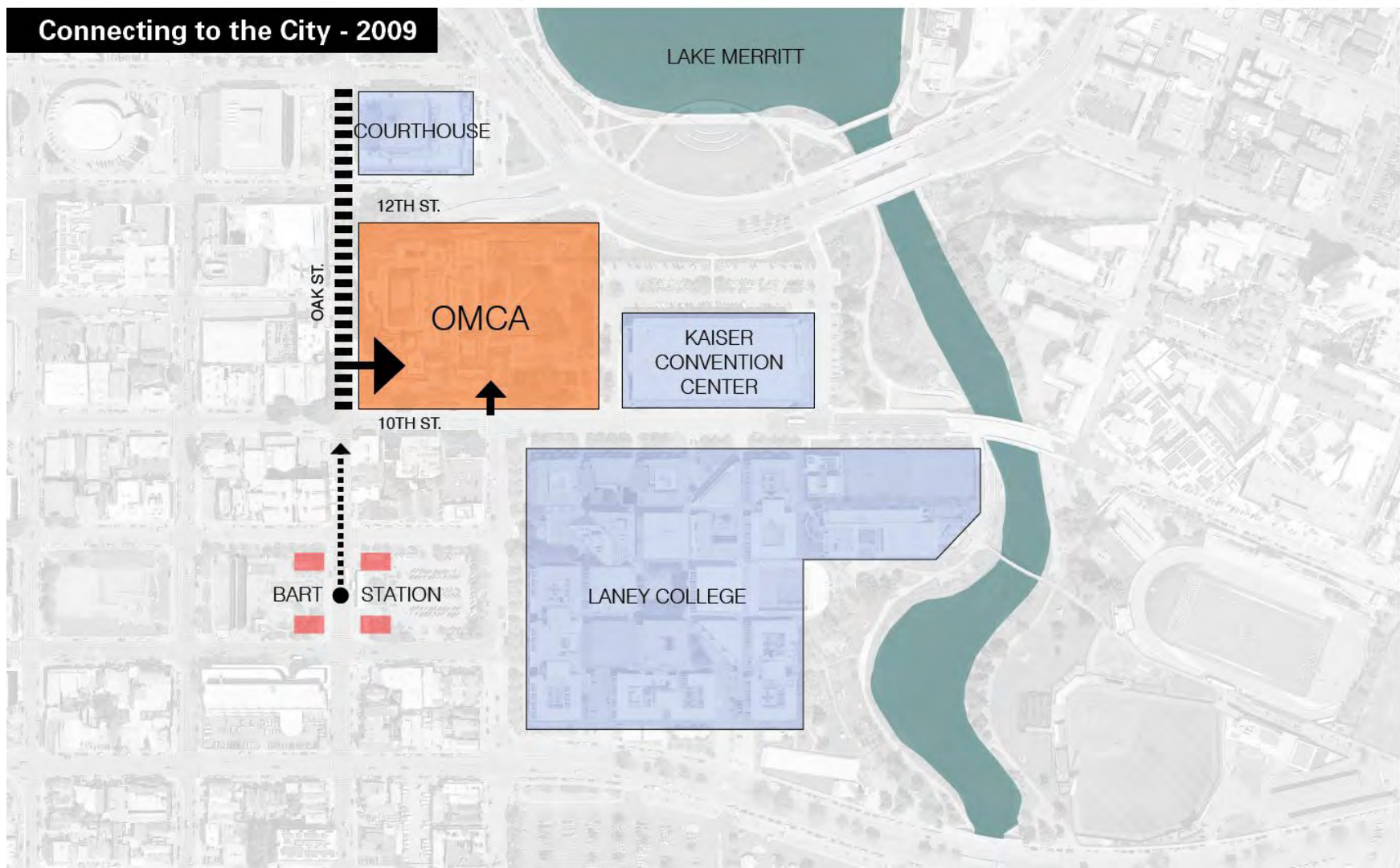
OMCA

KAISER  
CONVENTION  
CENTER

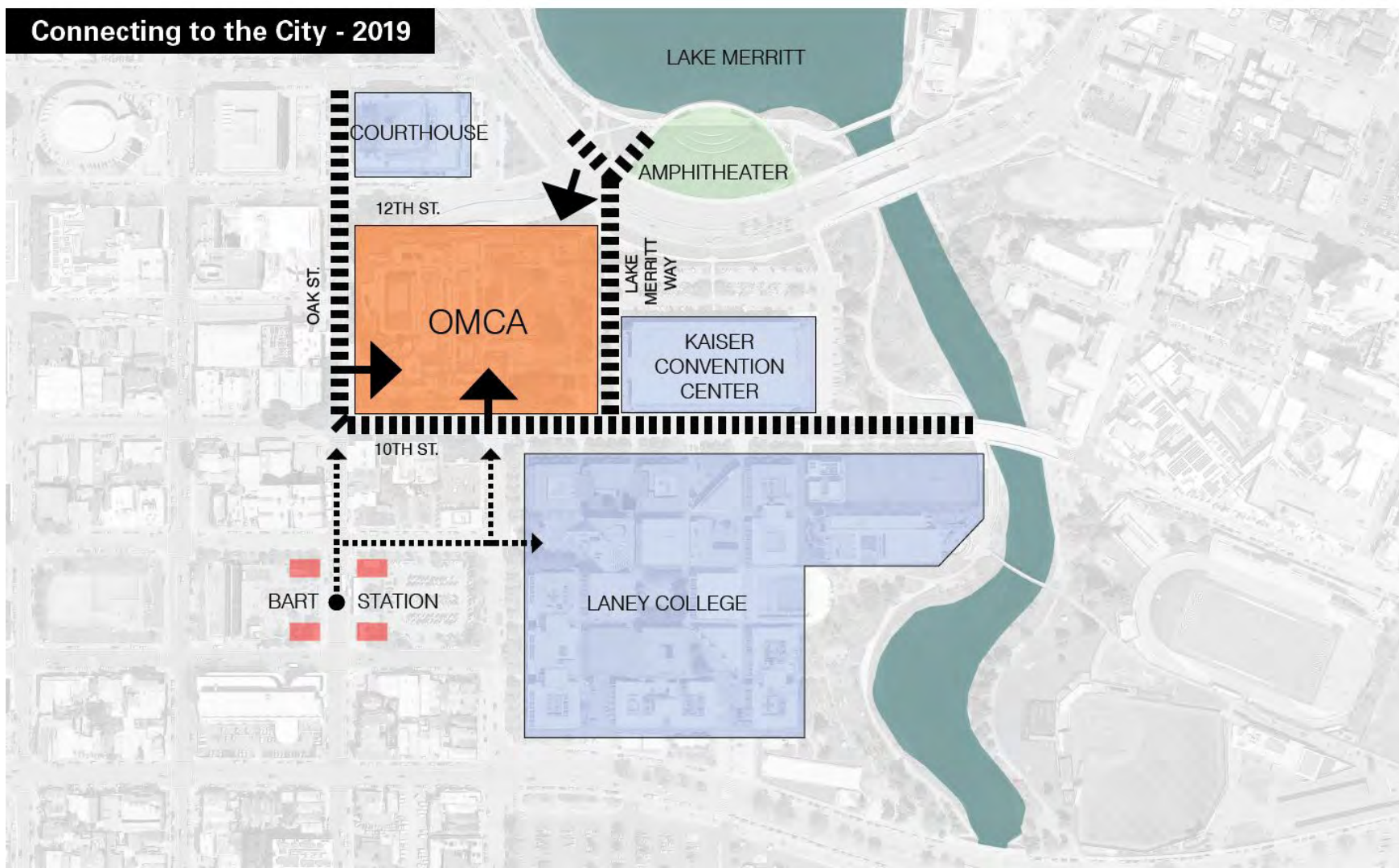
10TH ST.

BART  
STATION

LANEY COLLEGE



# Connecting to the City - 2019



Oak Street Entry 2008



## Oak Street Entry Today



# Lake Merritt Station Area Plan







40' Opening



Proposed Cafe Looking South - Proposed



Cafe Entrance



Proposed 10th St Entry





Existing 12th Street Garden Entry



KAISER



OMCA



COURTHOUSE



CONNECTING TO THE CITY





12th Street - Rishell Court Interior



12th Street - Rishell Court Exterior

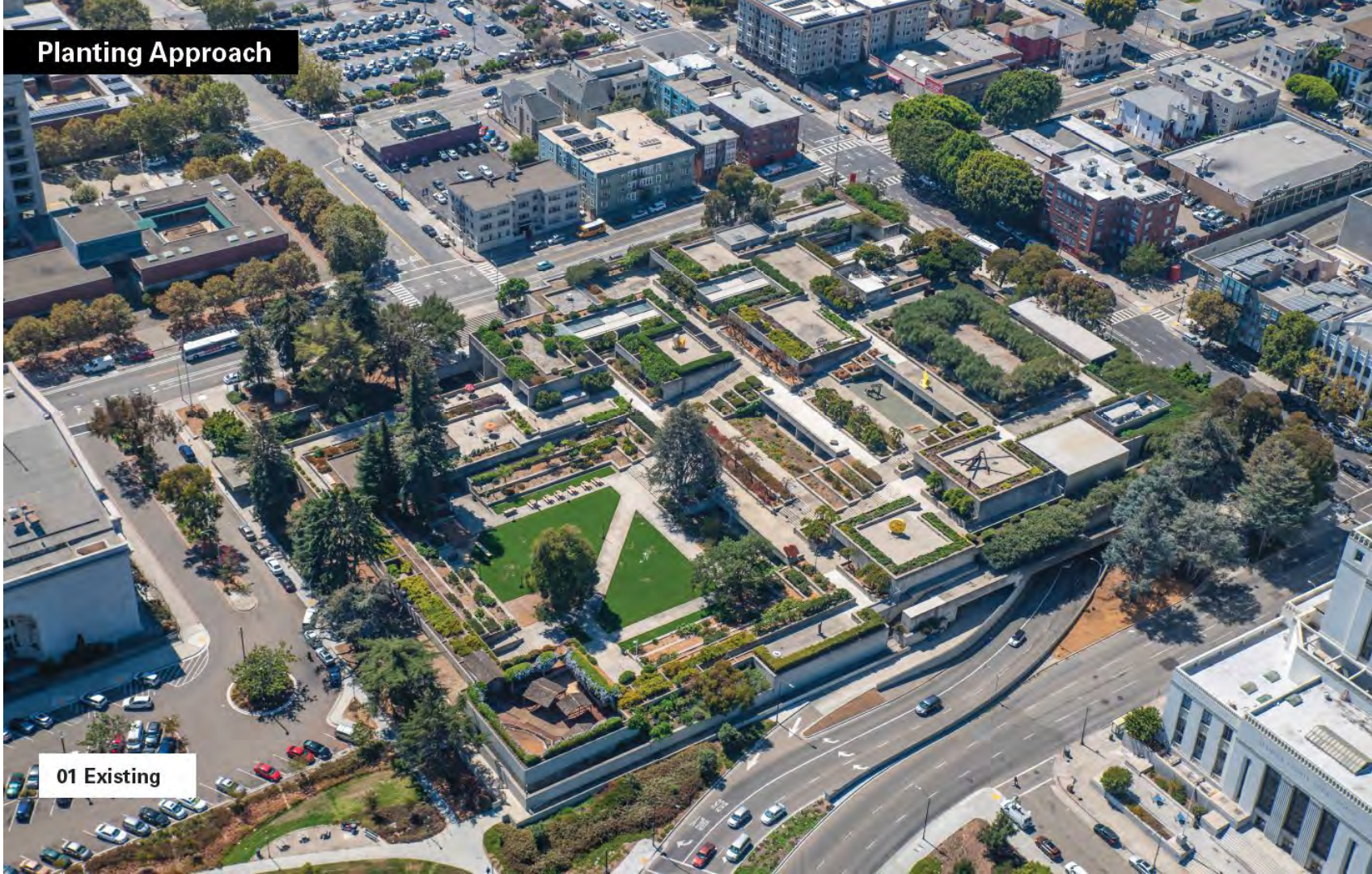


## Planting Reinforces Architecture

*The ease and delight with which the visitor can move from the study of art, cultural and natural history to the contemplation of nature itself, makes Oakland Museum one of the rare places of the world. (Architectural Record 1970)*

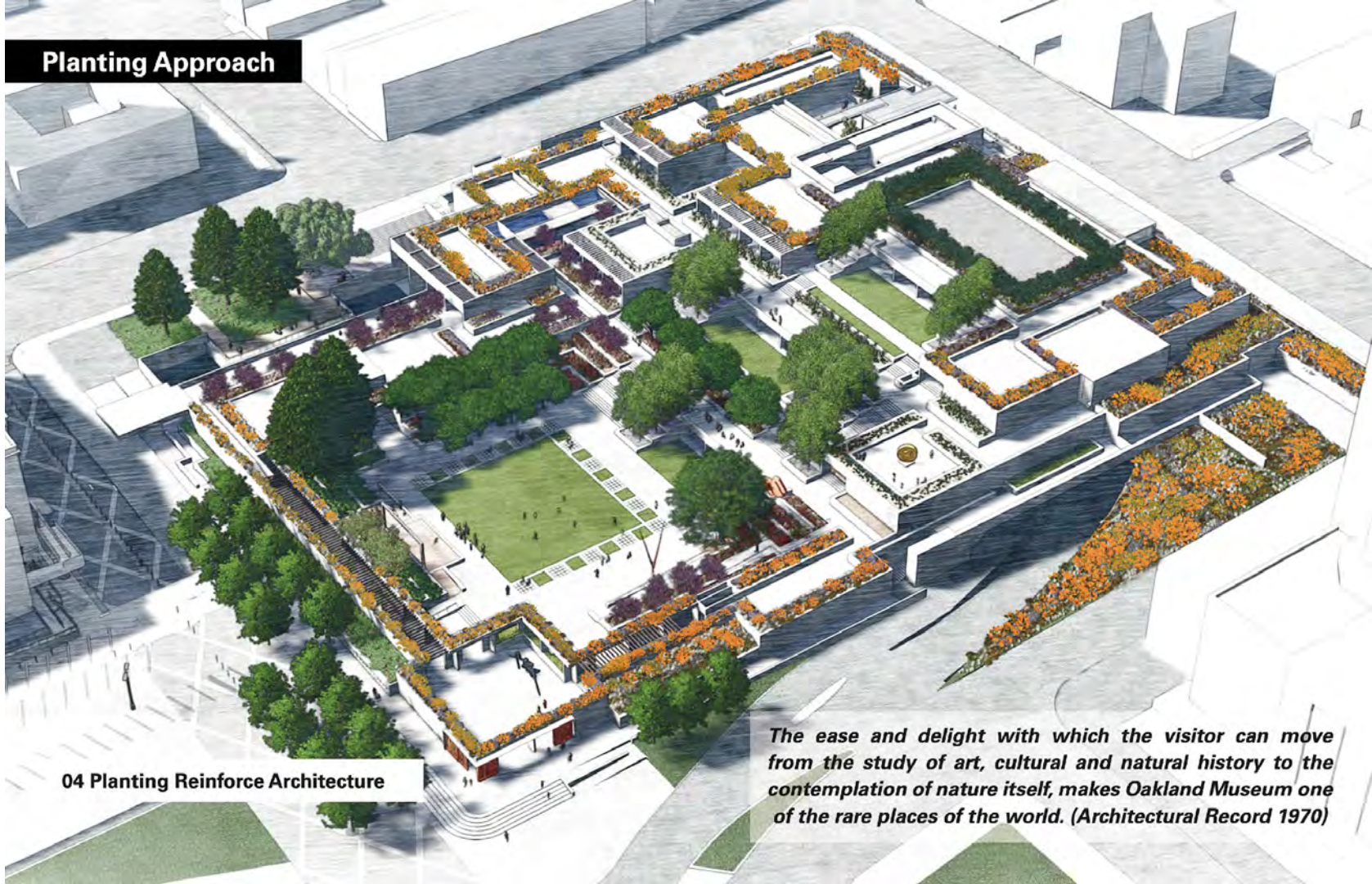


# Planting Approach



01 Existing

## Planting Approach



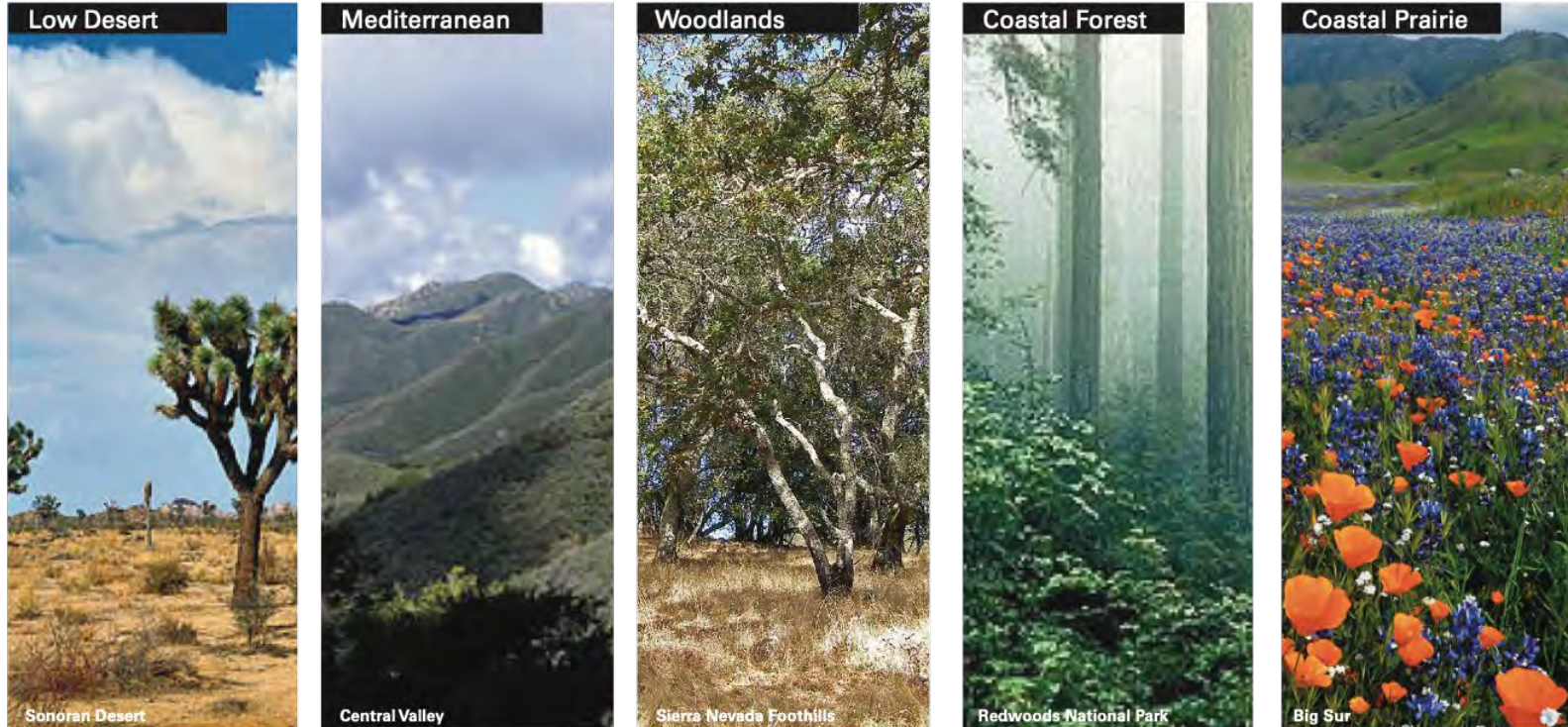
04 Planting Reinforce Architecture

*The ease and delight with which the visitor can move from the study of art, cultural and natural history to the contemplation of nature itself, makes Oakland Museum one of the rare places of the world. (Architectural Record 1970)*

# Ecoregions of California

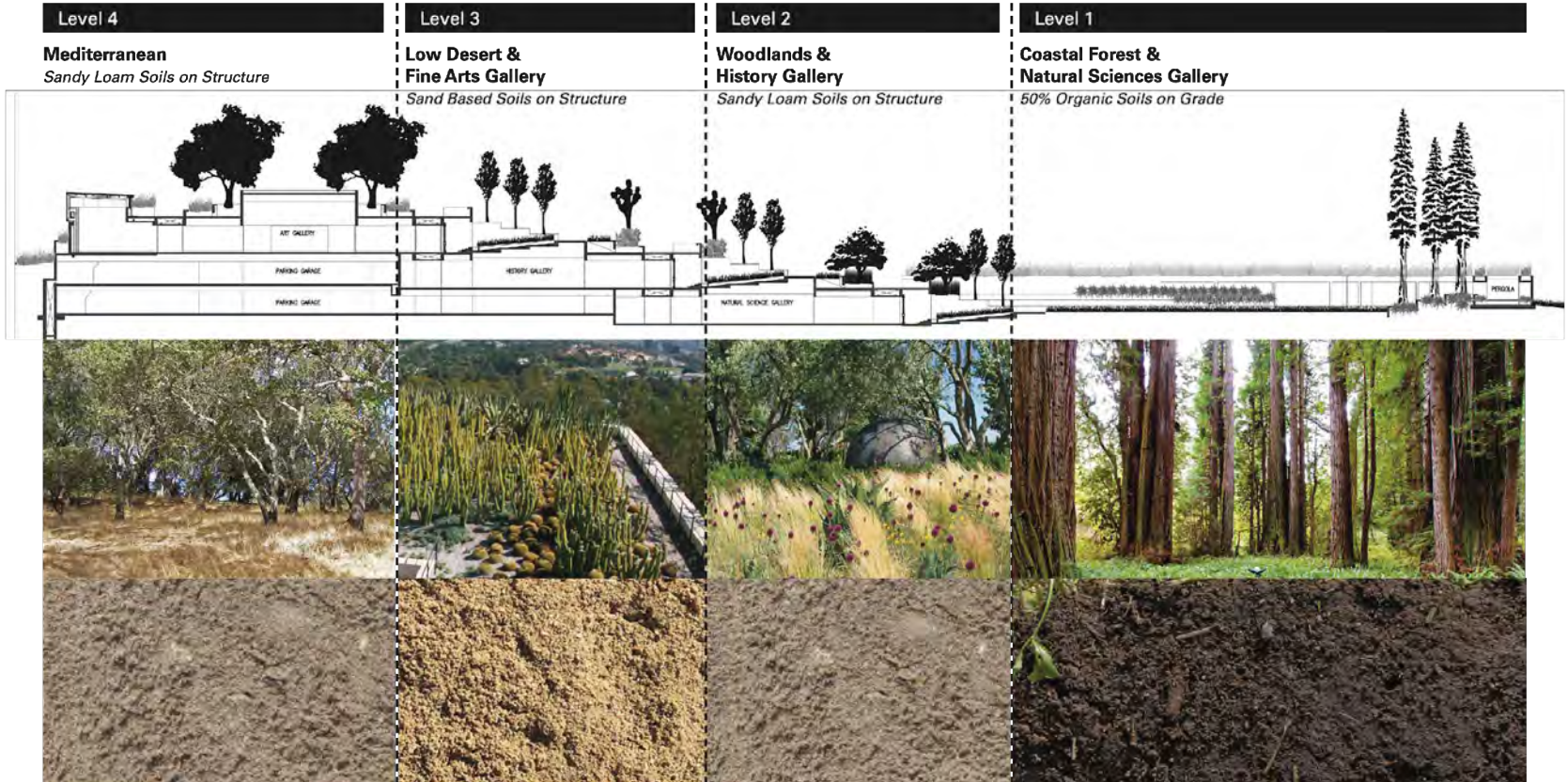
## Planting Approach

*The ecology of California can be understood by dividing the state into a number of ecoregions, which contain distinct ecological communities of plants and animals in a contiguous region.*



# Cross Section of California

Planting by Ecoregions



Existing



Removed



2022



2035





# Proposed Level 2 Terrace





Lawn

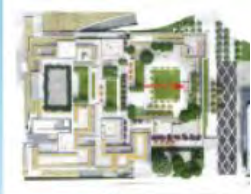
ADA Ramp

ADA Ramp

Stairs

Stage

# Proposed Stage



Stage



Proposed View from Stage



Stage





Thank You

**OAK**  
LAND  
**MUSEUM**  
OF **CA**