

# SPUR

**Ideas + Action for a Better City**

learn more at [SPUR.org](http://SPUR.org)

*tweet about this event:  
@SPUR\_Urbanist*



# Introduction to Green Foothills

# Our Mission

To protect the **open spaces, farmlands, and natural resources** of San Mateo and Santa Clara Counties **for the benefit of all** through **advocacy, education, and grassroots action**



# What does our advocacy look like?



Engaging in local land use issues



Holding decision-makers accountable



Empowering community members



# Farmland

## Morgan Hill



**83% of farmland parcels in the county are 40 acres or less**

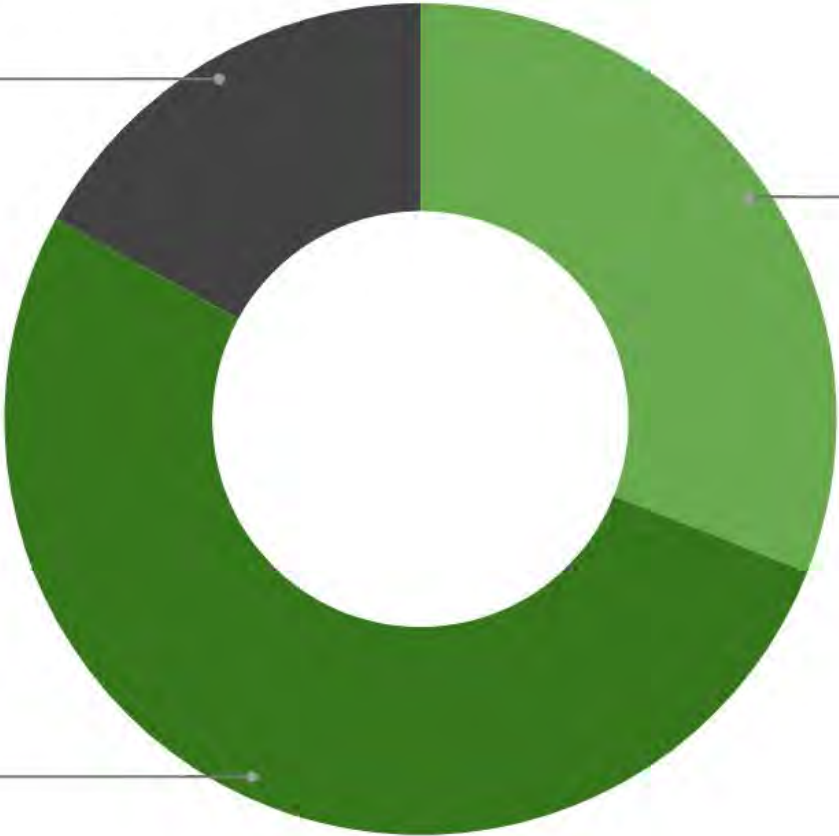


# Percentage of Parcel Size Range

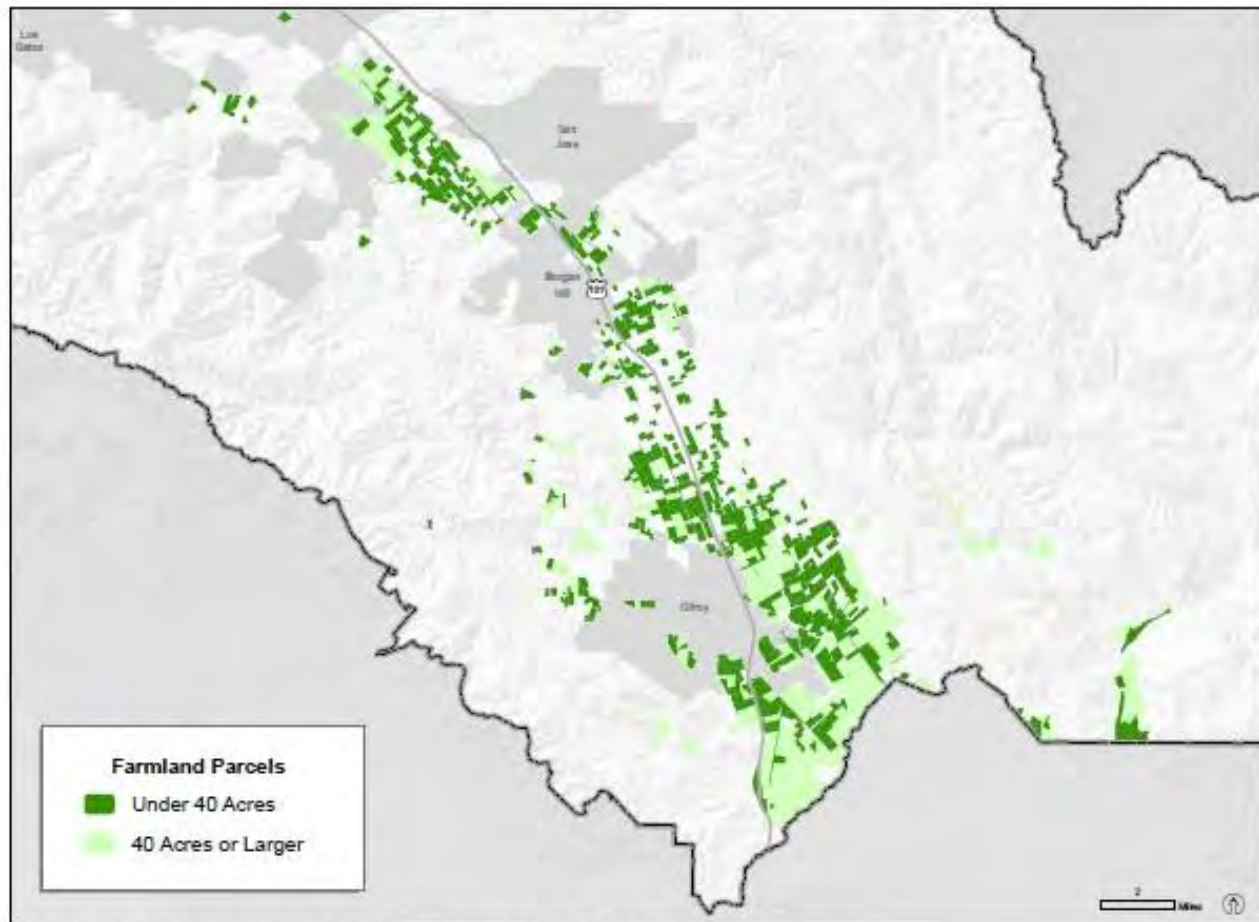
>40 acres  
17.0%

11 to 40 acres  
31.0%

10 acres or less  
52.0%







**FARMLAND PARCELS ABOVE AND BELOW 40 ACRES IN SIZE:**

Small parcels make up the majority of farmland in the County, especially between the cities of Morgan Hill and Gilroy





***Small farms are viable,  
worth preserving, and  
critical to local climate resilience  
but additional efforts are required to  
ensure their future***



# Public Benefits

- Climate resilience
- Ecological services
- Resilient urban food supply
- Local food economy
- Food access and health
- Sense of place



# Recommendations

1

Facilitate  
access to  
land

2

Preserve  
contiguous  
agricultural  
areas

3

Foster a  
supportive  
public  
environment  
for farming

4

Streamline  
burdensome  
regulations



# Recommendations

5

Invest in ecosystem services and technical assistance

6

Increase access to diverse markets

7

Grow youth knowledge of agriculture and the local food system



# What You Can Do



Support protection of farmland



Purchase local food



Spread the word





**Coyote Valley**





# Veggielution





# What is Veggielution?

Veggielution is a 6-acre urban farm that connects people from diverse backgrounds through food and farming to build community in East San José.





Veggielution gathers people around three types of connections essential for humanity:

- TO OUR LAND AND FOOD
- TO EACH OTHER IN COMMUNITY
- ACROSS BARRIERS THAT DIVIDED US



Our Deeper Truths

# Our Program Areas

**VEGGIELUTION GATHERS AND CONNECTS PEOPLE FROM EAST SAN JOSE AND BEYOND THROUGH PROVIDING THREE VENTURES OF PROGRAMS:**



## **COMMUNITY ENGAGEMENT**

Deliberately engaging in relationships of respect and empathy with others who are different.



## **FOOD SOVEREIGNTY**

Organizing East San Jose residents to shape and define their local food system



## **ENVIRONMENTAL EDUCATION**

Increase a sense of purpose around the connection between local environmental issues, youth, and inequity.





# Our Farm

- Emma Prusch Farm Park
- Mayfair Community
- Farming Model
- Distribution Methods







# Urban Farm







# Public Lands





# Pipeline

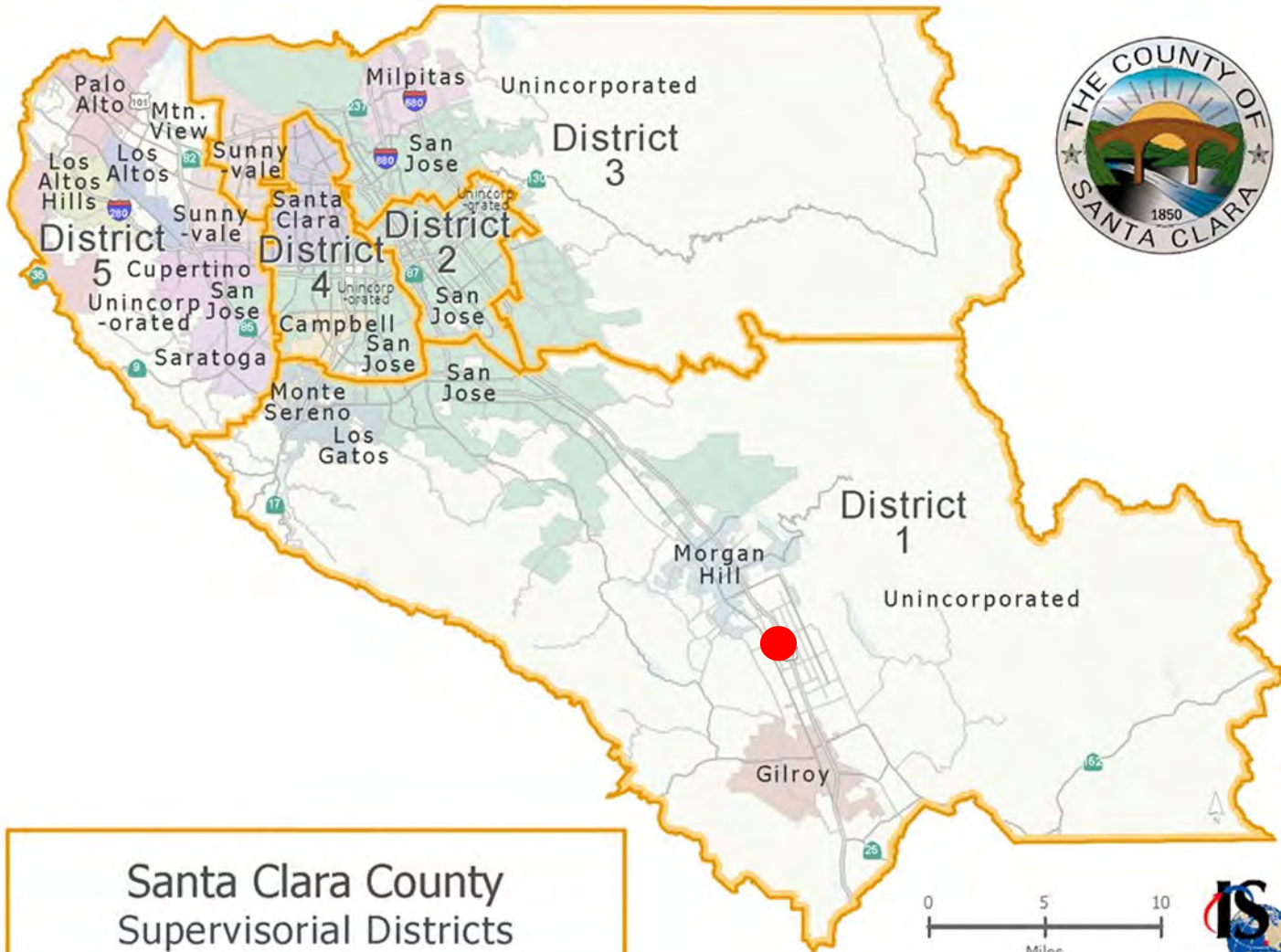




# Spade & Plow Organics

San martin, CA

Established 2015



Santa Clara County  
Supervisorial Districts



















# Thank you

Sam Thorp

[spadeandplow.com](http://spadeandplow.com)

[Sam@spadeandplow.com](mailto:Sam@spadeandplow.com)

831-594-6268







What is your OPINION?  
♥ How you feel or what you think about something  
♥ Give reasons why you think or feel that way  
☺ I like \_\_\_\_\_  
☹ I do not like \_\_\_\_\_  
☹ I think \_\_\_\_\_ because \_\_\_\_\_

Whole Body Listening!  
Let's work to remind you to listen with your entire body.

SPRING IS THE BEST TIME OF THE YEAR!  
I'VE NEVER SEEN A SNOWMAN BEFORE!  
MEMBERSHIP!  
If You Were a Penguin  
HERE WE GO!

PAWS & Ponder  
Be MINDFUL of your emotions

PANTHER PRIDE

BOARD OF SUPERVISORS  
SANTA CLARA CO., TEXAS

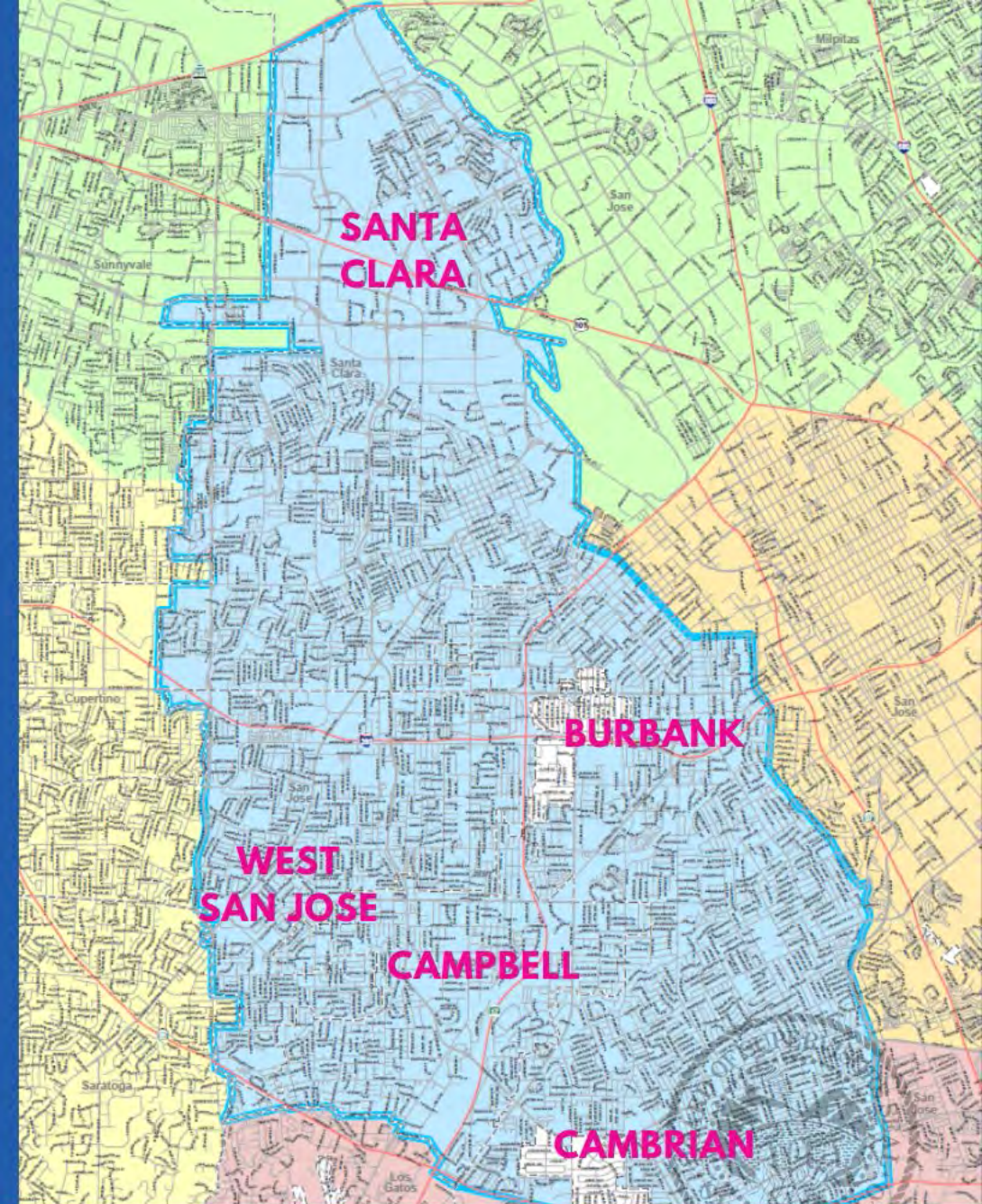
# SUPERVISOR SUSAN ELLENBERG



# DISTRICT 4

## SANTA CLARA COUNTY

Buena Vista  
Burbank  
Cambrian  
Campbell  
Rose Garden  
Santa Clara  
Shasta Hanchett  
Sherman Oaks  
West San Jose  
Willow Glen







# 1. ACCESS TO QUALITY, AFFORDABLE CHILDCARE FOR ALL

Support the childcare provider workforce  
Identify and support additional facilities for equitable access.  
Promote and encourage businesses to offer options to all of  
their employees

## 2. ENSURE THAT EVERY CHILD IS READY FOR KINDERGARTEN

### Food security

Literacy

Family support systems





“

## EARLY WIN, **BIG** IMPACT



2019: \$35,500 for Summer 2019

**5,836 Caregiver Meals**

14 Priority Sites in Santa Clara County

2020 Proposal: \$106,000 for Summer 2020

**20,000 Caregiver Meals**

14 Priority Sites in Santa Clara County





## EARLY WIN, **BIG** IMPACT



Santa Clara Co. Approves  
Food Insecurity Pilot  
Program for Students



Proposed Support Program  
For Food-Insecure  
Students Coming Before  
Supervisors

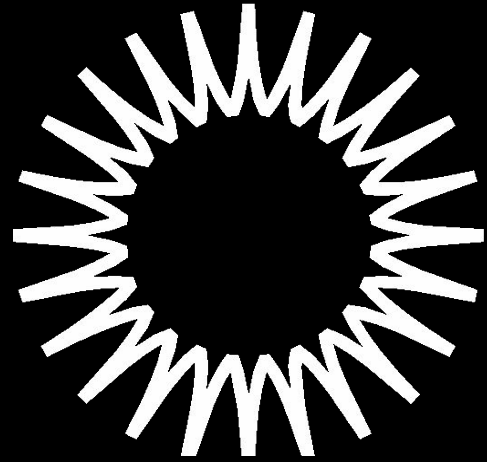


**sanjoseinside**

Santa Clara County to  
Explore Feasibility of  
Funding Universal Meals at  
Area's Poorest Schools

"There's definitely an observable difference in how engaged the kids are. They're not hungry, so they're able to concentrate." - Marla Sanchez, Campbell Union School District





# SPUR

**Ideas + Action for a Better City**

learn more at [SPUR.org](http://SPUR.org)

*tweet about this event:  
@SPUR\_Urbanist*