

# SPUR

**Ideas + Action for a Better City**

learn more at [SPUR.org](http://SPUR.org)

*tweet about this event:*  
**@SPUR\_Urbanist**  
**#SocialProgress**



# The Social Progress Index Background and US Implementation

# We need a new model

**“Economic growth alone is not sufficient** to advance societies and improve the quality of life of citizens.

True success, and growth that is inclusive, requires achieving **both economic and social progress.”**

**Michael E. Porter**  
Harvard Business  
School and Social  
Progress Imperative  
Advisory Board Chair



# Social Progress Index design principles

**1.** exclusively **social** and **environmental** indicators

The icons include a car, a family of three, a gear, and a hand holding a leaf, each associated with a horizontal progress bar.

**2.** **outcomes**

not inputs



**3.** relevant to **all countries**



**4.** **actionability**

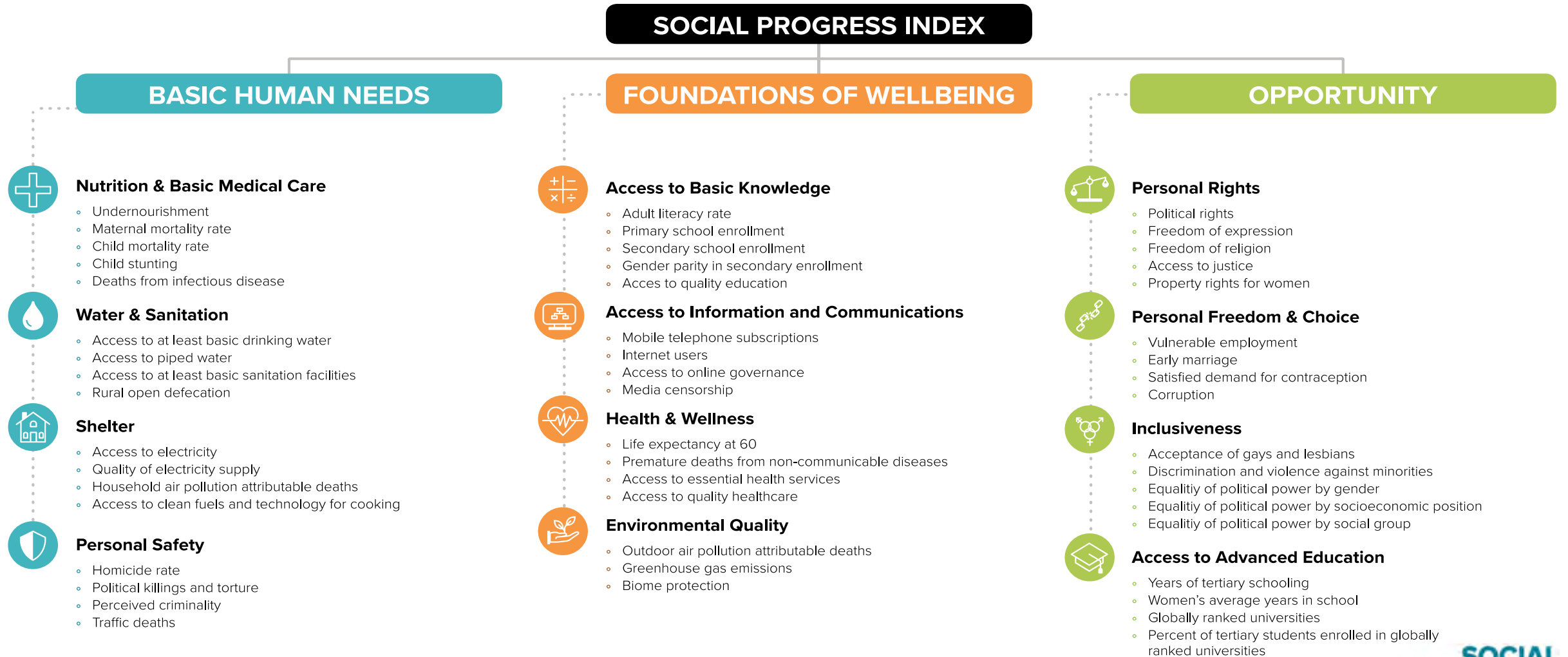




As a complement to economic measures like GDP, **SPI answers universally important questions about the success of society** that measures of economic progress cannot alone address.

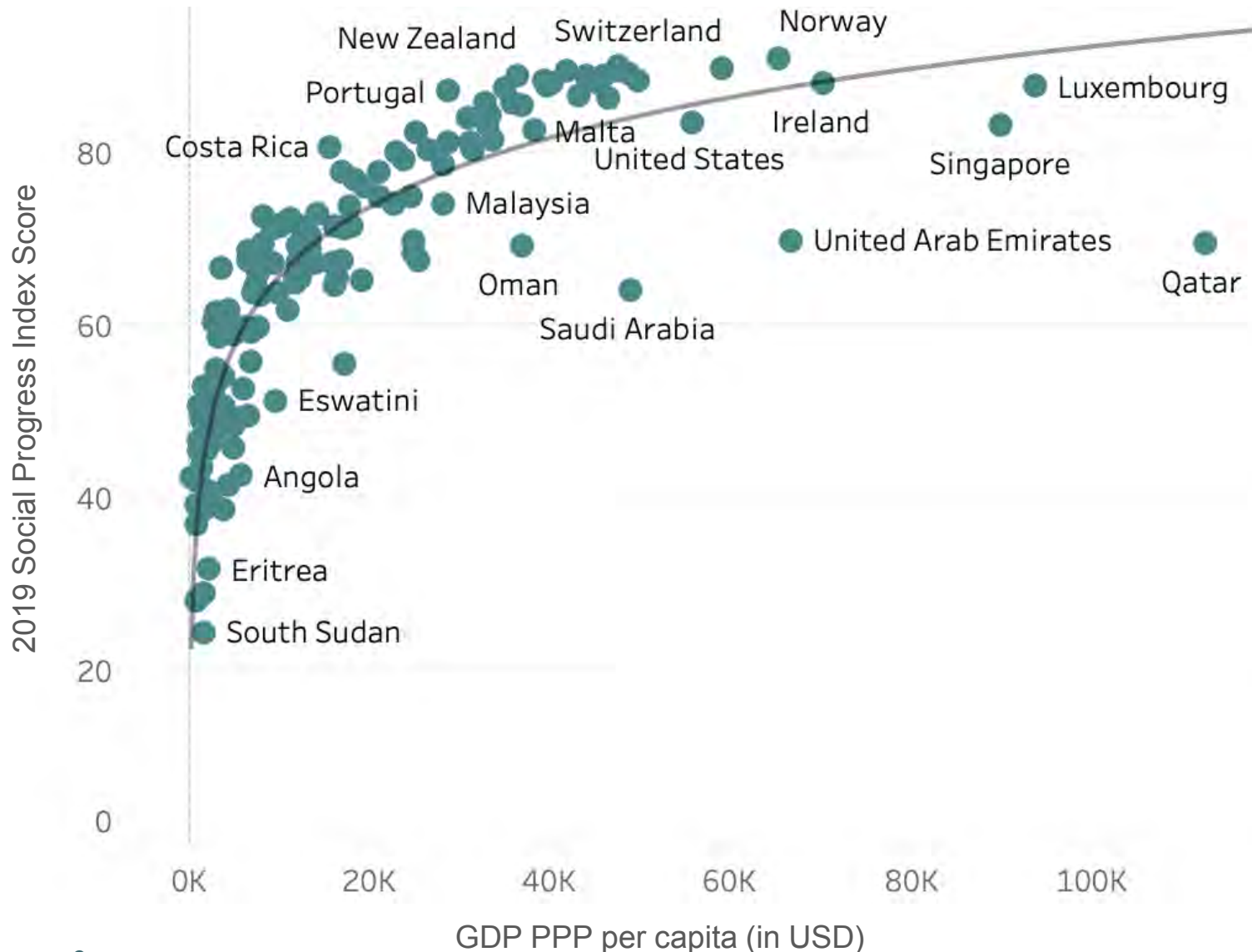


# 2019 Social Progress Index aggregates 50+ social and environmental outcome indicators from 149 countries



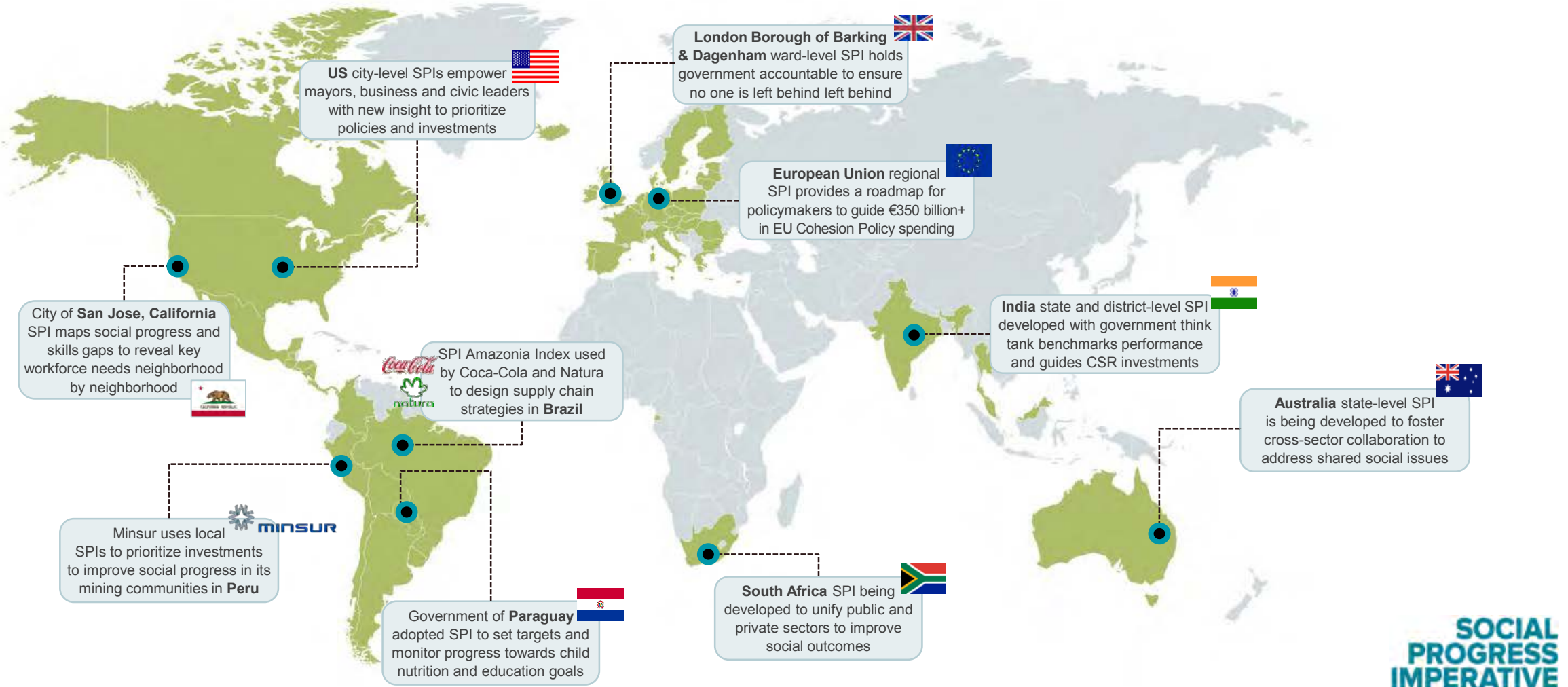
## GDP is not destiny

Across the spectrum, we see how some countries are much better at **turning their economic growth into social progress** than others.



# From Index to Action to Impact

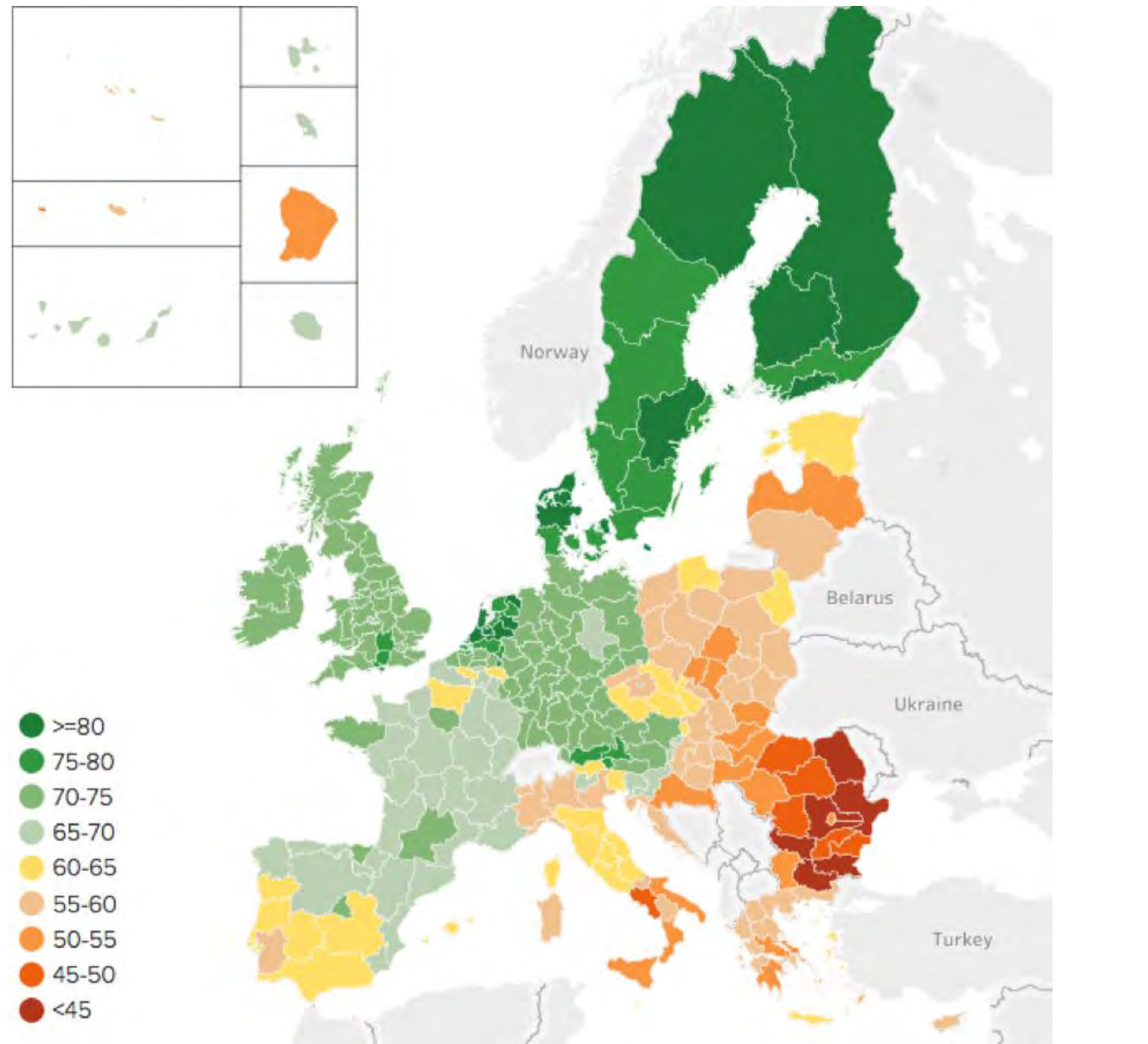
Delivering local data and insight that is meaningful, relevant and actionable





**The EU Regional Social Progress Index** measures quality of life in 272 NUTS-2 regions of the European Union.

It is now an official tool of EU Cohesion Policy.



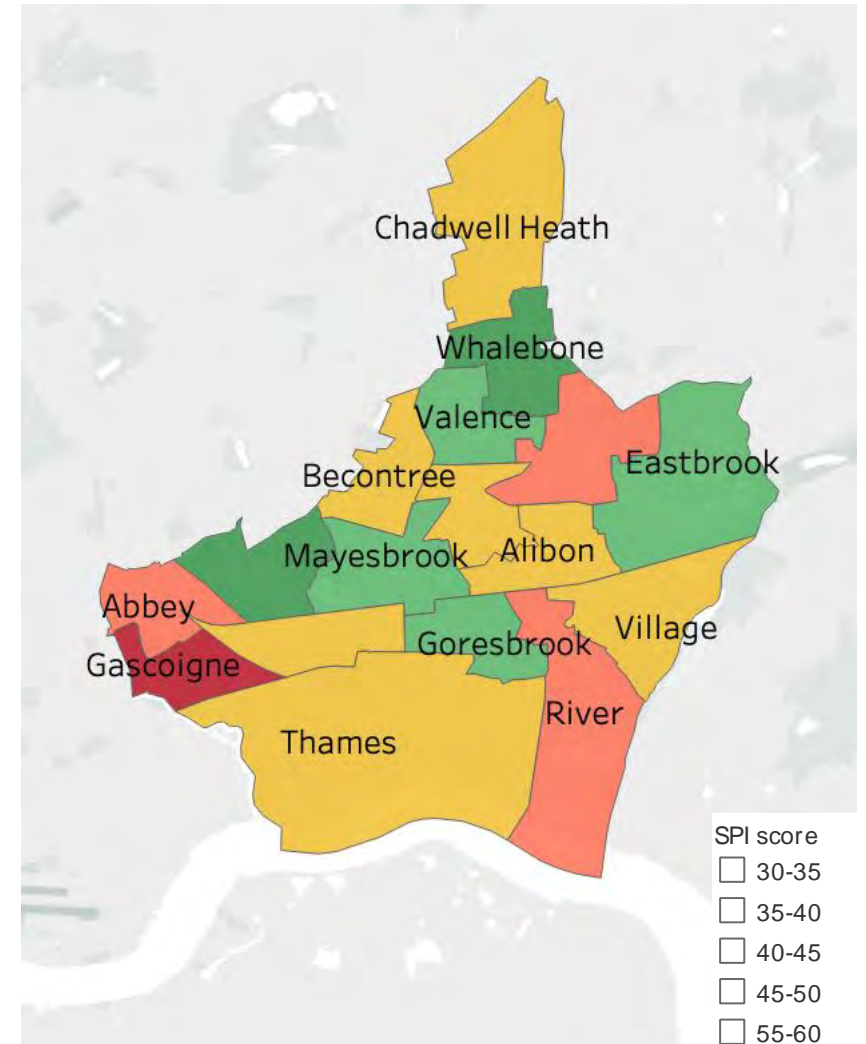
# SPI: London Borough of Barking & Dagenham

The ward-level SPI in Barking and Dagenham is driving policy and make local government accountable to residents' needs.

The Index was featured in the Financial Times as a “standout example” of technology being applied in the public sector.

FT

*“The use of SPI data has led to the creation of preventive measures for specific social issues and savings of £3m on resource and service allocation.”*





# UNITED STATES

## 2019 Social Progress Index GDP PPP per capita

Score/Value  
**83.62/100**  
\$55,681

Rank  
**26/149**  
8/149

Strength/Weakness



### BASIC HUMAN NEEDS

	Score/ Value	Rank	Strength/ Weakness
<b>Nutrition &amp; Basic Medical Care</b>	<b>91.64</b>	<b>35</b>	
Undernourishment (% of pop.)	2.50	1	
Maternal mortality rate (deaths/100,000 live births)	30.10	64	
Child mortality rate (deaths/1,000 live births)	6.60	41	
Child stunting (% of children)	2.37	3	
Deaths from infectious diseases (deaths/100,000)	21.54	38	
<b>Water &amp; Sanitation</b>	<b>99.40</b>	<b>26</b>	
Access to at least basic drinking water (% of pop.)	99.27	44	
Access to piped water (% of pop.)	98.74	37	
Access to at least basic <sup>4</sup> sanitation facilities (% of pop.)	99.97	11	
Rural open defecation (% of pop.)	0.00	1	
<b>Shelter</b>	<b>96.94</b>	<b>23</b>	
Access to electricity (% of pop.)	100.00	1	
Quality of electricity supply (1=low; 7=high)	6.24	25	
Household air pollution attributable deaths (deaths/100,000 people)	0.09	11	
Access to clean fuels and technology for cooking (% of pop.)	100.00	1	
<b>Personal Safety</b>	<b>72.91</b>	<b>57</b>	
Homicide rate <sup>1</sup> (deaths/100,000)	5.35	93	
Perceived criminality (1=low; 5=high)	3.00	33	
Political killings and torture (0=low freedom; 1=high freedom)	0.91	43	
Traffic deaths (deaths/100,000)	12.92	62	

#### Notes

- Homicide rate and globally ranked universities are log-transformed for calculation.
- The following indicators are capped for calculation: Adult literacy rate (99), secondary school enrollment (100), mobile telephone subscriptions (100), and greenhouse gas emissions (1,955.52).
- Gender parity in secondary enrollment is transformed to reflect the absolute distance from 1 for calculation. Calculated absolute distance below 0.03 is assigned a value of 0.03.

#### Comparing Countries

Over- and underperformance is relative to 15 countries of similar GDP per capita:  
Switzerland, Saudi Arabia, Netherlands, Iceland, Denmark, Sweden, Austria, Germany, Australia, Norway, Canada, Ireland, Belgium, United Arab Emirates, Finland

### FOUNDATIONS OF WELLBEING

	Score/ Value	Rank	Strength/ Weakness
<b>Access to Basic Knowledge</b>	<b>82.05</b>	<b>32</b>	
Adult literacy rate <sup>2</sup> (% of pop. aged 15+)	99.00	1	
Primary school enrollment (% of children)	99.64	20	
Secondary school enrollment <sup>2</sup> (% of children)	92.18	30	
Gender parity in secondary enrollment <sup>3</sup> (girls/boys)	0.99	1	
Access to quality education (0=unequal; 4=equal)	2.36	75	
<b>Access to Information &amp; Communications</b>	<b>90.10</b>	<b>19</b>	
Mobile telephone subscriptions (subscriptions/100 people)	120.69	1	
Internet users (% of pop.)	75.23	46	
Access to online governance (0=low; 1=high)	0.98	5	
Media censorship (0=frequent; 4=rare)	3.27	39	
<b>Health &amp; Wellness</b>	<b>75.27</b>	<b>34</b>	
Life expectancy at 60 (years)	23.27	36	
Premature deaths from non-communicable diseases (deaths/100,000)	287.85	46	
Access to essential health services (0=none; 100=full coverage)	87.77	30	
Access to quality healthcare (0=unequal; 4=equal)	2.35	70	
<b>Environmental Quality</b>	<b>70.48</b>	<b>59</b>	
Outdoor air pollution attributable deaths (deaths/100,000)	15.04	25	
Greenhouse gas emissions <sup>2</sup> (CO2 equivalents per GDP)	379.18	65	
Biome protection (% of biomes)	10.07	98	

#### Key

- Overperforming by 1 or more pts.
- Overperforming by less than 1 pt.
- Performing within the expected range
- Underperforming by less than 1 pt.
- Underperforming by 1 or more pts.
- No data available

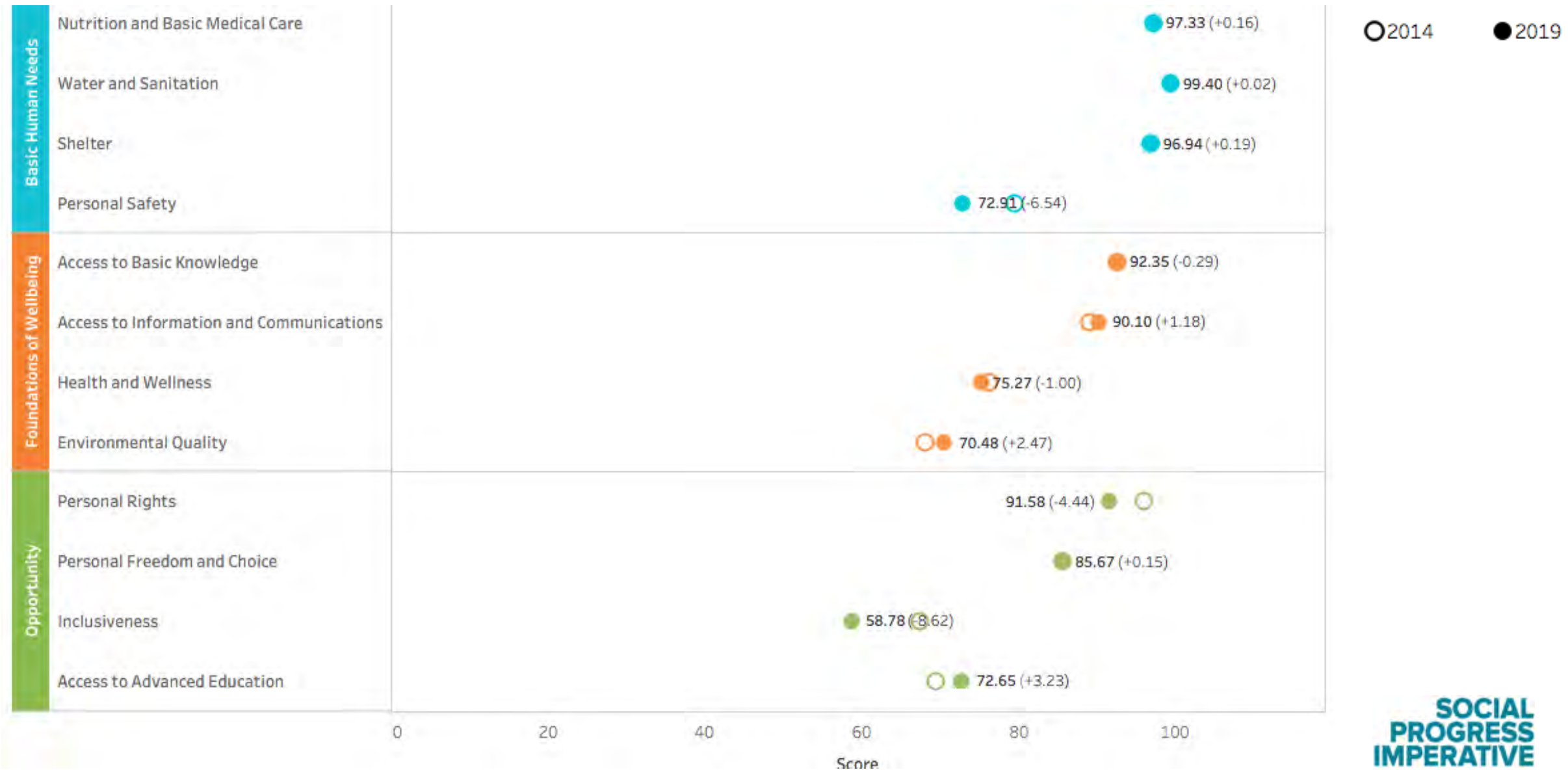
### OPPORTUNITY

	Score/ Value	Rank	Strength/ Weakness
<b>Personal Rights</b>	<b>77.17</b>	<b>19</b>	
Political rights (0=no rights; 40=full rights)	33.00	49	
Freedom of expression (0=no freedom; 1=full freedom)	0.93	25	
Freedom of religion (0=no freedom; 4=full freedom)	3.72	48	
Access to justice (0=non-existent; 1=observed)	0.92	34	
Property rights for women (0=no right; 5=full rights)	4.74	47	
<b>Personal Freedom &amp; Choice</b>	<b>85.67</b>	<b>20</b>	
Vulnerable employment (% of employees)	3.73	6	
Early marriage (% of women)	2.00	31	
Satisfied demand for contraception (% of women)	82.60	32	
Corruption (0=high; 100=low)	71.00	21	
<b>Inclusiveness</b>	<b>58.78</b>	<b>40</b>	
Acceptance of gays and lesbians (0=low; 100=high)	74.77	18	
Discrimination and violence against minorities (0=low; 10=high)	6.10	74	
Equality of political power by gender (0=unequal power; 4=equal power)	2.39	41	
Equality of political power by socioeconomic position (0=unequal power; 4=equal power)	2.07	81	
Equality of political power by social group (0=unequal power; 4=equal power)	2.61	62	
<b>Access to Advanced Education</b>	<b>72.65</b>	<b>3</b>	
Years of tertiary schooling	4.03	12	
Women's average years in school	13.40	3	
Globally ranked universities (points)	379.00	1	
Percent of tertiary students enrolled in globally ranked universities	25.00	46	

SOCIAL  
PROGRESS  
IMPERATIVE

SOCIAL  
PROGRESS  
IMPERATIVE

# Areas of Declining US Social Progress, 2014-2019





# Social Progress Index: US States

The SPI for the 50 US States reveals that despite economic growth, **social progress is not keeping pace for many Americans.**

And despite having the largest economy of all 50 states (and fifth-largest in the world), **California ranks just 33<sup>rd</sup>** on social progress.

## Tier 1

1.	Massachusetts	64.82
2.	Minnesota	62.30
3.	Vermont	61.90
4.	New Hampshire	61.76
5.	Connecticut	61.09

## Tier 2

6.	Wisconsin	57.88
7.	Washington	57.76
8.	Maine	57.54
9.	Iowa	57.21
10.	Rhode Island	56.67
11.	Colorado	56.01
12.	New York	54.76
13.	Maryland	54.47
14.	New Jersey	54.26
15.	Virginia	54.22

## Tier 3

16.	Oregon	53.36
17.	North Dakota	53.14
18.	Nebraska	52.57
19.	Illinois	52.33
20.	South Dakota	51.81
21.	Delaware	51.55
22.	Pennsylvania	51.08
23.	Michigan	50.76
24.	Utah	50.58

## Tier 4

25.	Hawaii	49.82
26.	Ohio	48.64
27.	Kansas	48.26
28.	Idaho	47.77
29.	Wyoming	46.90
30.	North Carolina	46.80
31.	Montana	46.64
32.	Florida	45.93
33.	California	45.53
34.	Arizona	45.43

## Tier 5

35.	Alaska	43.77
36.	Missouri	43.70
37.	Indiana	43.54
38.	Georgia	43.25
39.	South Carolina	41.99
40.	Tennessee	41.24
41.	Nevada	40.29
42.	Texas	40.27
43.	Kentucky	38.60
44.	New Mexico	37.16

## Tier 6

45.	Alabama	33.60
46.	Oklahoma	32.80
47.	Arkansas	32.10
48.	Louisiana	30.07
49.	West Virginia	29.50
50.	Mississippi	27.18

# California Social Progress Index Scorecard



CALIFORNIA

Social Progress Index **45.53** Rank: 33/50  
Median Household Income **\$63,783** Rank: 9/50

The world’s fifth largest economy is underperforming on social progress.

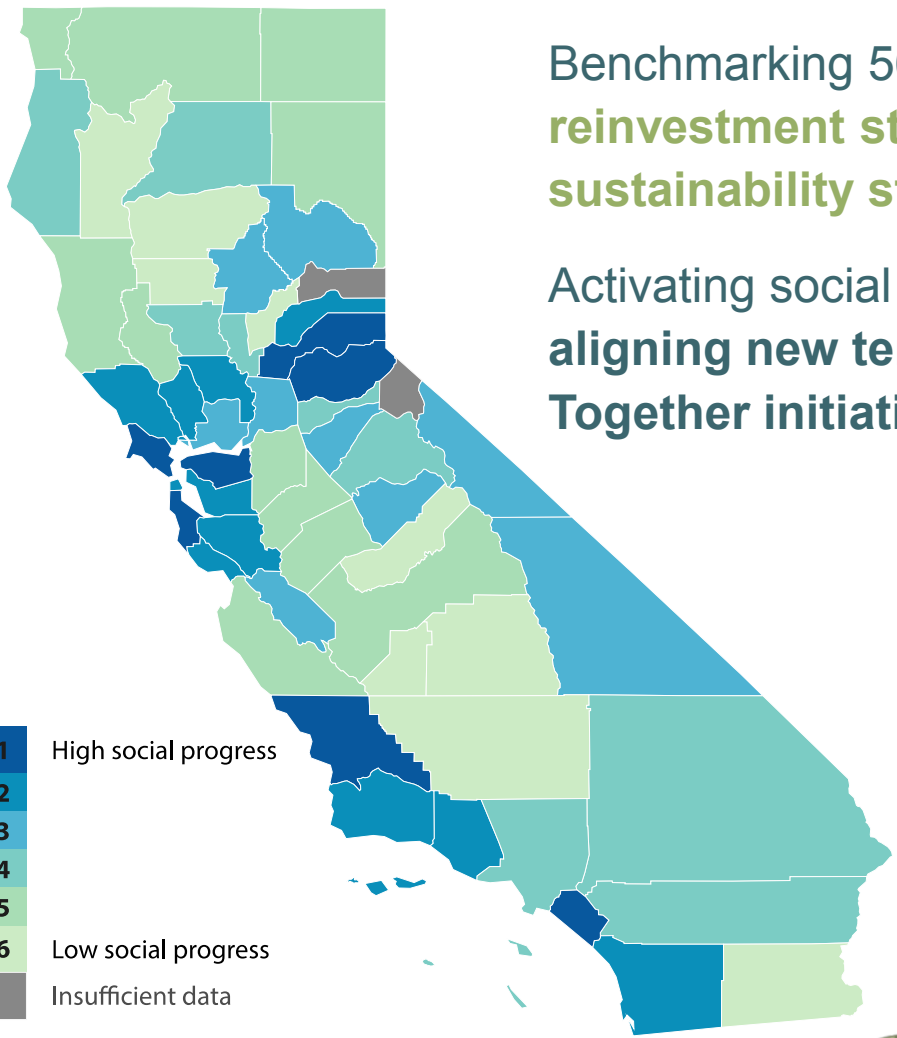
Full report and state scorecards available at:  
[www.socialprogressimperative.org/custom-indexes/usindex](http://www.socialprogressimperative.org/custom-indexes/usindex)

	Score/Value	Strength/Weakness Rank		Score/Value	Strength/Weakness Rank		Score/Value	Strength/Weakness Rank
<b>Basic Human Needs</b>	<b>37.42</b>	<b>49</b>	<b>Foundations of Wellbeing</b>	<b>49.27</b>	<b>18</b>	<b>Opportunity</b>	<b>51.20</b>	<b>17</b>
<b>Nutrition and Basic Medical Care</b>	<b>54.88</b>	<b>19</b>	<b>Access to Basic Knowledge</b>	<b>37.05</b>	<b>38</b>	<b>Personal Rights</b>	<b>37.60</b>	<b>46</b>
Food insecurity (% households)	11.81	18	Preschool enrollment (% 3-4 yo)	48.59	16	Women in state legislatures (% leg.)	21.70	32
Maternal mortality (per 100,000)	0.24	12	High school incompleter (% 18-24 yo)	13.12	23	Voter turnout (% pop.)	56.69	39
Infant Mortality Rate (per 1,000)	4.80	4	Math proficiency (% proficient)	27.12	40	Election process (0=low; 100=high)	54.00	49
Youth preventative medical (% 12-17 yo)	74.30	42	Reading proficiency (% proficient)	28.41	40	Corruption (6=low; 30=high)	19.00	40
Youth preventative dental (% 1-17 yo)	74.60	48	Financial Literacy (0=low; 6=high)	2.97	47			
<b>Water and Sanitation</b>	<b>51.04</b>	<b>39</b>	<b>Access to Info and Communications</b>	<b>57.45</b>	<b>22</b>	<b>Personal Freedom and Choice</b>	<b>52.28</b>	<b>23</b>
Clean and safe water (% pop.)	94.04	37	Urban broadband access (% without)	2.00	8	Early marriage (per 1,000)	5.50	45
Water violations (0=high; 6=low)	2.00	38	Rural broadband access (% without)	61.00	42	Teenage birth rate (per 1,000)	22.40	20
Water fluoridation (% pop.)	63.70	34	Income parity in broadband	1.57	6	Public transport quality (0=low; 6=high)	5.21	2
			Computer with broadband (% pop.)	77.74	15	Like what I do every day (% pop.)	78.85	16
<b>Shelter</b>	<b>14.06</b>	<b>50</b>	<b>Health and Wellness</b>	<b>49.16</b>	<b>5</b>	<b>Inclusiveness</b>	<b>73.71</b>	<b>2</b>
Housing problems (% households)	47.54	50	Adult obesity rate (% pop.)	25.00	4	Gender pay gap (dollars)	0.88	2
Avail. of affordable housing (units/100)	29.73	50	Overweight youth (% 10-17 yo)	31.20	28	Employment discrim. (charges/100,000)	14.96	18
Homelessness (% pop.)	0.34	48	Life expectancy (age in years)	80.82	3	Acceptance of legal immigration (% pop.)	85.00	1
Unsheltered homeless (% homeless)	68.25	50	Cost burden of treatment (% pop.)	11.50	15	Support of same-sex marriage (% pop.)	66.00	7
			Suicide rate (per 100,000)	10.27	7	Access to disability services (% pop.)	16.03	3
			Drug overdose deaths (per 100,000)	11.30	7	Hate group concentration (per 100,000)	0.20	17
<b>Personal Safety</b>	<b>49.78</b>	<b>31</b>	<b>Environmental Quality</b>	<b>56.30</b>	<b>12</b>	<b>Access to Advanced Education</b>	<b>47.42</b>	<b>11</b>
Violent crime rate (per 100,000)	440.40	36	CO2 emissions (mil. met. tons/capita)	9.32	2	2- or 4-year college degree (% 25+ yo)	39.81	19
Murder rate (per 100,000)	4.90	25	Air pollution (µg/m³)	6.20	20	Advanced degree (% 25+ yo)	11.90	14
Property crime (per 100,000)	2,553.00	24	Pesticide exposures (exp./100,000)	26.37	12	College retention rate (% pop.)	86.50	1
Traffic deaths (per 100,000)	8.11	10	Renewable energy consump. (% total)	11.15	18			
Perceived safety (% pop.)	65.93	41						



Strengths and weaknesses are calculated relative to 15 states of similar median household income: Minnesota, Washington, Colorado, Utah, Virginia, Delaware, New York, Illinois, Wyoming, North Dakota, New Hampshire, Rhode Island, Massachusetts, Vermont, and Connecticut.

# California Counties



Benchmarking 56 counties with unique local and regional challenges to **support reinvestment strategies in economically depressed areas** and to **design new sustainability strategies** for those areas overwhelmed by a supercharged economy.

Activating social progress initiatives in key regions across the state, beginning with **aligning new territorial drilldowns with Governor Gavin Newsom’s Regions Rising Together initiative** in the Central Valley. <https://www.socialprogress.org/index/california/map>

*“We plan to collaborate with innovative research teams such as **Social Progress Imperative** and WinWin...The data is critical as it provides an important benchmark to keep ourselves accountable to **delivering real results for the people of California.**”*

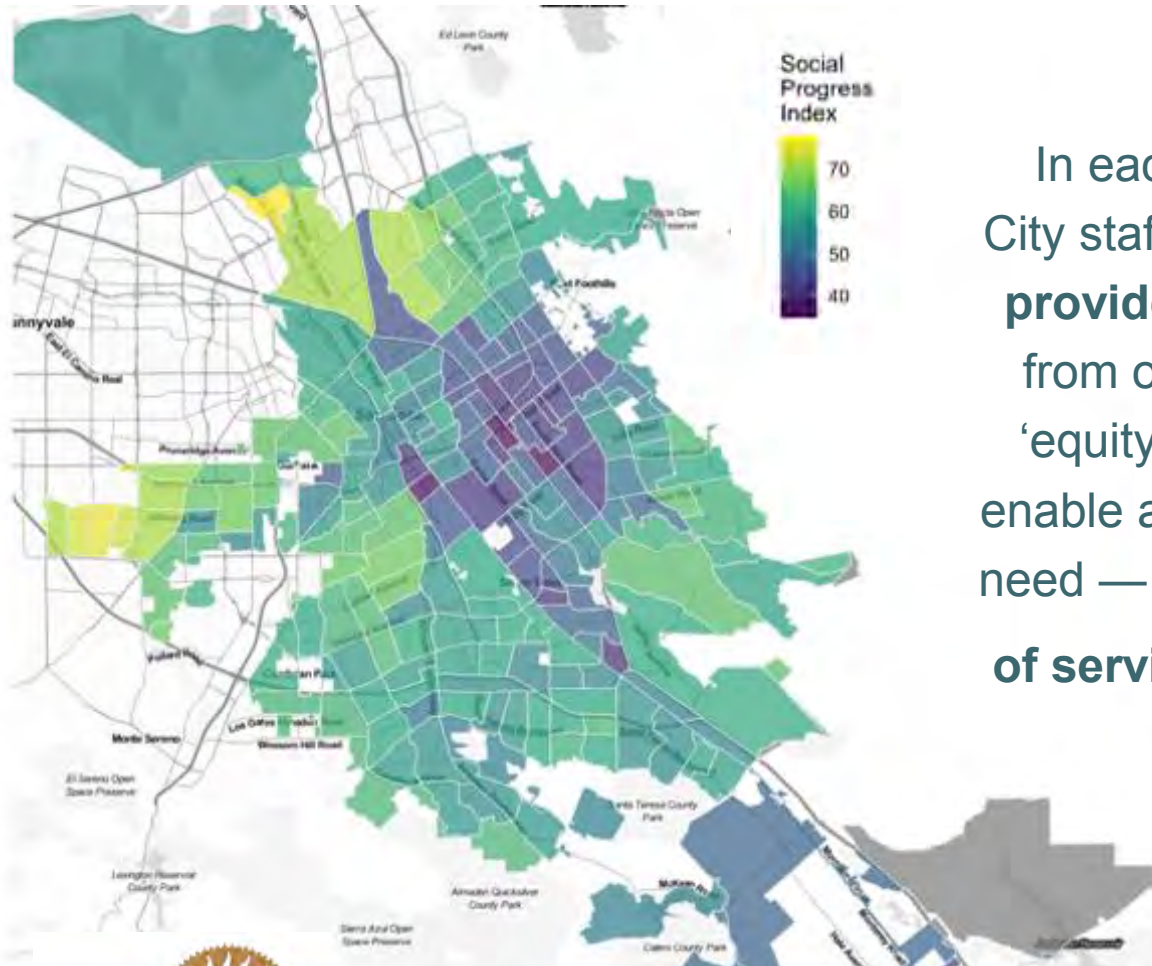


**Lenny Mendonca**  
Chief Economic and Business  
Advisor to Governor Newsom

Source: [Press Enterprise](#)



# First US city to adopt Social Progress Index: **San Jose**



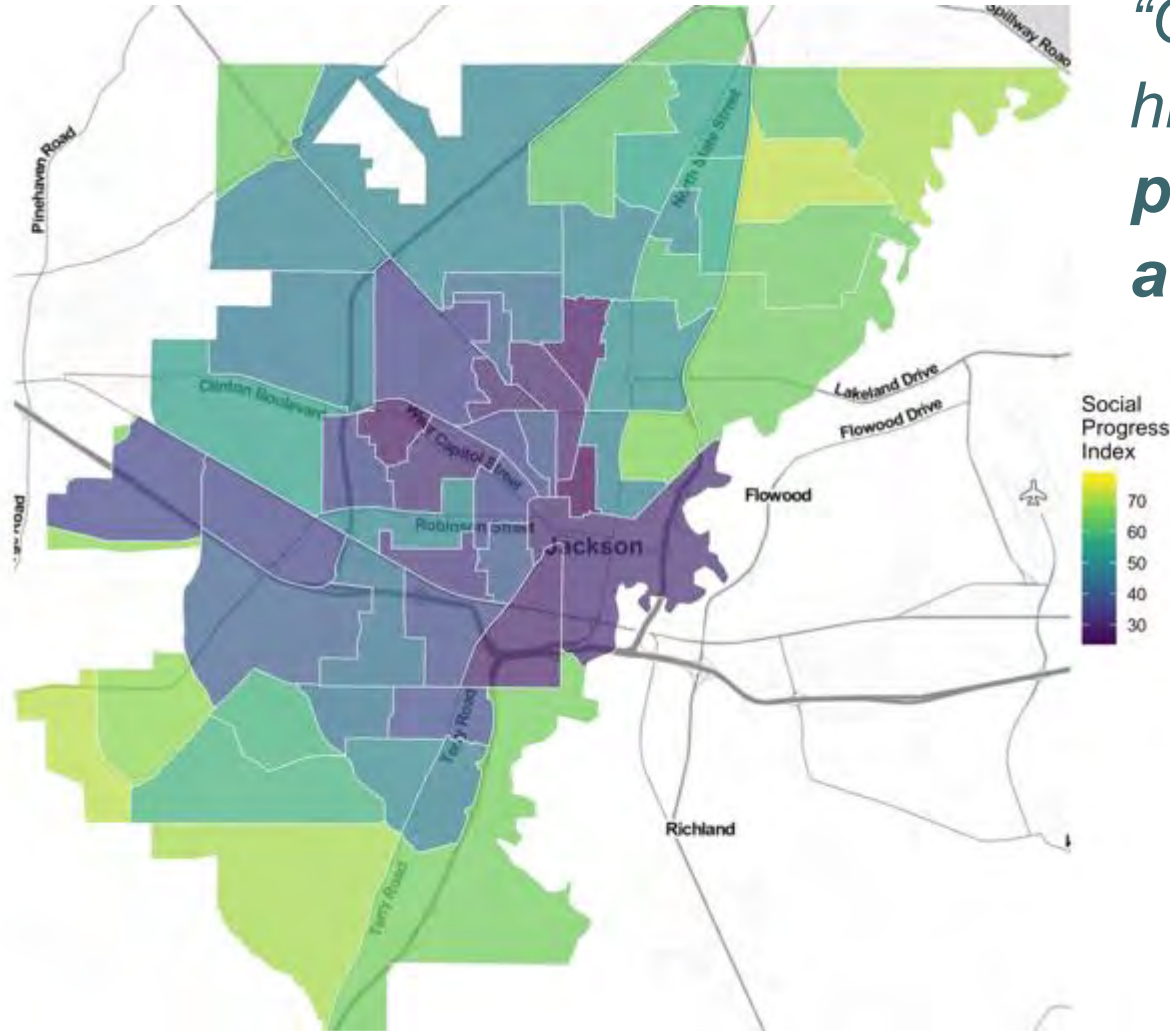
In each of these areas, I propose that City staff **uses the information and tools provided by the SPI Index, GARE, and from other ongoing work to develop an ‘equity screen’—that is, criteria that will enable a prioritization of neighborhoods by need — to enable appropriate allocation of services to high-need communities.**



***Mayor Sam Liccardo***  
*City of San Jose*



# Social Progress Index: Jackson



*"Our city has gotten into a historic pattern of **chasing projects instead of chasing a vision.**"*

**Mayor Chokwe Lumumba**  
City of Jackson



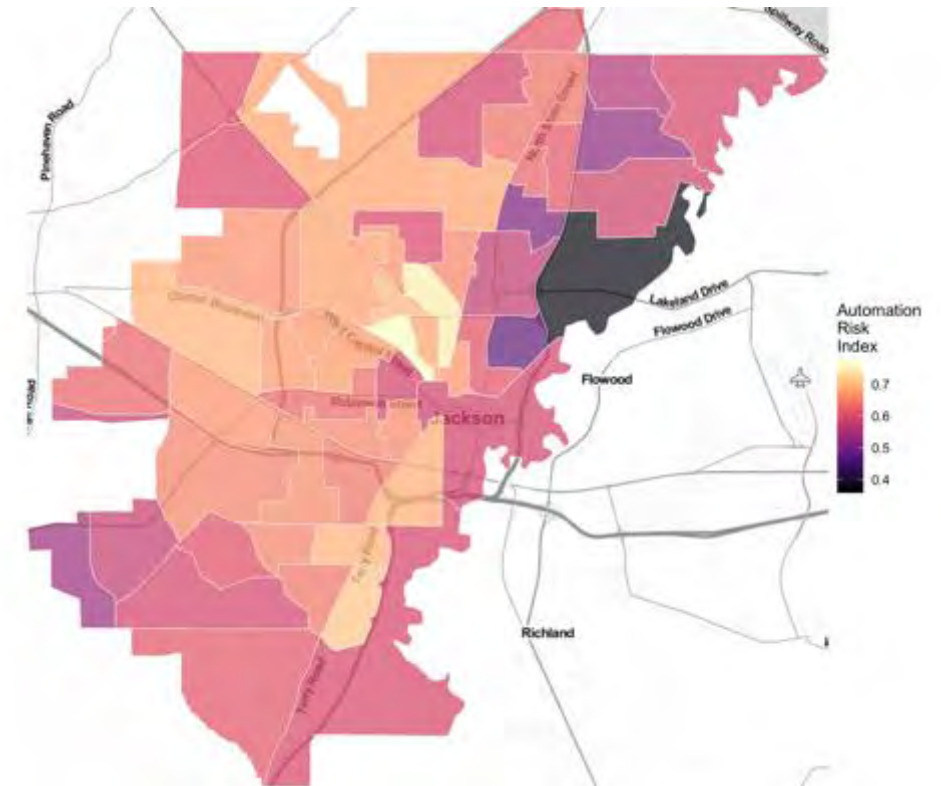
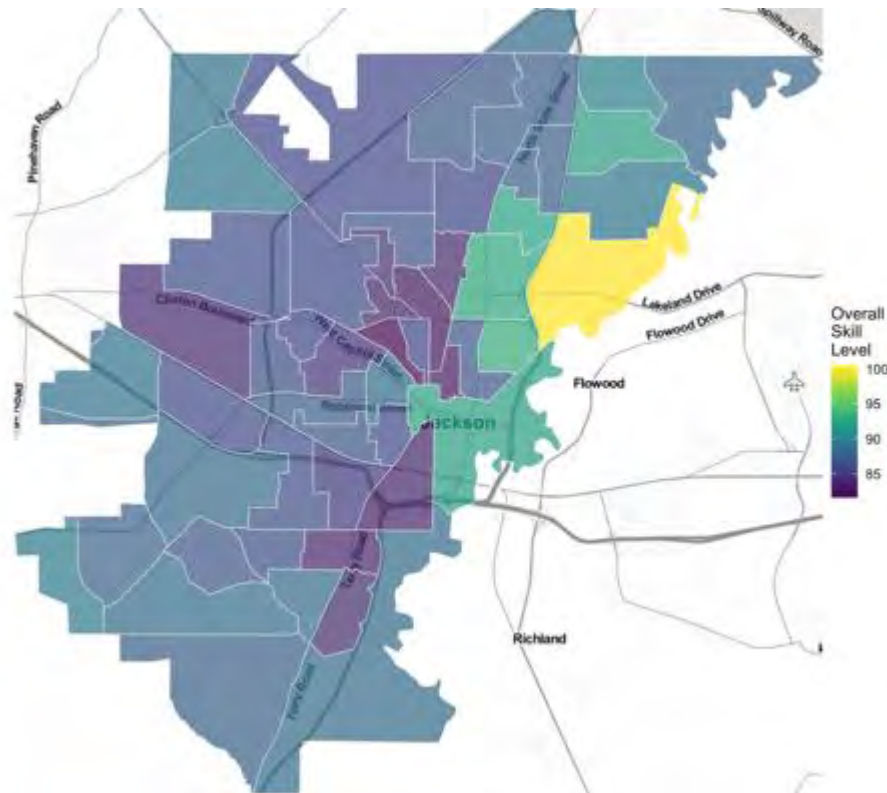
Aligning SPI Jackson with five pillars of the city's strategic plan:

1. healthy citizens,
2. affordable homes in safe neighborhoods,
3. a thriving educational system,
4. occupational opportunities in a growing tax base and
5. a city that is open and welcoming to visitors

# Occupational and skills mapping

# Risk of automation

New dialogue with private sector to **bring new jobs to communities** with the right mix of skills to meet them.



# Thank you.

## Contact

**Justin Edwards, North America Director**

Social Progress Imperative

 [jedwards@socialprogress.org](mailto:jedwards@socialprogress.org)

 [www.socialprogress.org](http://www.socialprogress.org)

 [@socprogress](https://twitter.com/socprogress)

**SOCIAL  
PROGRESS  
IMPERATIVE**



# Social Progress Index: Use Cases for San José

February 25 2020 | City of San Jose

SAN JOSÉ



# What is social progress, and why should we measure it?

Social Progress and well being is **measured by having the skills, characteristics, and capacities to flourish as an individual and thrive as a community.** It is a multidimensional measurement of a community's strengths and needs.



**Budget and Resource Allocation**



**Community Benefit**



**Master Plans and Community Planning Processes**



**Program Design and Nonprofit Partnerships**

# Mayor's Budget Message

## June 3, 2019

“In each of these areas, I propose that City staff uses the **information and tools provided by the SPI** Index, GARE, and from other ongoing work to develop an **“equity screen”**—that is, criteria that will enable a prioritization of neighborhoods by need—to enable appropriate allocation of services to high-need communities.”



**Sam Liccardo**

Mayor, City of San José



# Equity Screen Example: Lactation Pod Placement

## October 1, 2019

	Population of Census Tracks Rating	Female Population in Census Tracks Rating	Program Attendance Rating	Population Served Rating	Transportation/ Access Rating	School Performance Rating
Berryessa Community Center	2	2	7	4	8	6
Roosevelt Community Center	6	6	9	9	1	2
Almaden Community Center	1	1	4	1	6	7
Willow Glen Community Center	4	4	1	3	7	6
Mayfair Community Center	8	9	10	7	9	3
Southside Community Center	3	3	8	6	5	5
Bascom Community Center	7	7	2	10	2	4
Seven Trees Community Center	9	8	3	8	3	1
Camden Community Center	10	10	5	2	4	6
Evergreen Community Center	5	5	6	5	10	7

Candidates:  
**10 Sites**

Funding for:  
**5 Sites**



# Equity Screen Example: Lactation Pod Placement

## October 1, 2019

Location:	SJ Council District:	Total Rubric Score:	Priority Level:
King Library	3	37	1
Tully Community Branch Library	7	48	2
Hillview Branch Library	5	53	3
Educational Park Library	4	60	4
Evergreen Brach Library	8	64	5
Roosevelt Community Center	3	52	1
Seven Trees Community Center	7	54	2
Mayfair Community Center	5	59	3
Bascom Community Center	6	60	4
Willow Glen Community Center	6	68	5

Candidates:  
**10 Sites**

Funding for:  
**5 Sites**

# Equity Screen Example: Lactation Pod Placement

## February 2020

### Library Specific Measures

### SPI Index Measures

Branches:	Council District	Public Transportation Access Routes	INDEX: Average monthly gate count	Index for branch population under the age of 18	Index for branch population over the age of 60	INDEX: Average monthly computer bookings	INDEX: Average monthly WiFi Statistics	Outside Library Systems Providing Local Services	INDEX: Branch households <\$15k	SPI INDEX: Housing / Homeless	SPI INDEX: Access to Basic Knowledge	SPI INDEX: Access to Information and Communication	SPI INDEX: Access to Advanced Education	SPI INDEX: Income Inequality	TOTAL	↓↑
Mount Pleasant		5	0	0.00	66.13	68.22	0.00	0.00	0	100.00	50.58	33.28	46.20	38.62	32.97	39.64
Alum Rock		5	3	68.98	27.60	27.24	58.77	50.36	0	43.61	44.75	25.86	40.92	37.20	32.90	41.65
East Branch		3	4	21.55	73.50	90.10	48.43	17.36	0	86.80	24.05	22.64	42.50	33.33	19.45	43.61
Educational Park		4	5	71.60	46.45	41.30	61.74	57.88	0	46.51	42.58	37.70	36.63	32.40	39.20	46.73
West Valley		1	2	75.96	0.00	9.43	92.30	54.18	0	0.00	59.51	61.10	51.87	57.33	55.66	47.03
Bascom		6	3	42.50	76.82	74.99	27.79	7.85	0	65.60	44.27	32.04	42.73	53.85	51.87	47.30
Hillview		5	2	49.05	57.68	73.28	91.64	33.44	0	88.96	24.53	28.97	31.25	43.05	10.08	48.36
Tully		7	3	78.32	31.53	50.20	100.00	56.92	0	27.92	43.59	36.84	45.92	36.10	26.74	48.55
Edenvale		2	3	60.14	28.19	51.92	84.68	44.33	0	54.96	50.02	31.83	48.21	54.94	39.38	49.87
Pearl Avenue		9	1	56.47	38.85	38.89	54.73	36.58	0	60.60	51.19	48.20	54.61	58.41	51.89	50.04
Willow Glen		6	2	49.27	59.42	48.73	47.25	31.00	0	43.83	50.29	47.96	55.10	62.23	58.28	50.30
Joyce Ellington		3	1	35.79	64.77	71.44	81.27	20.73	0	63.26	48.46	33.01	53.00	37.54	48.29	50.69
Biblioteca		3	3	27.29	73.37	84.22	89.53	66.05	0	49.87	26.26	34.31	51.16	41.33	31.96	52.31
Cambrian		9	1	70.00	23.26	0.00	41.81	66.41	0	72.46	65.63	66.02	57.81	65.64	59.55	53.51
Evergreen		8	2	65.92	50.06	40.08	81.57	60.62	0	75.25	50.07	48.62	38.87	43.00	40.12	54.02
Seven Trees		7	2	45.16	73.12	80.39	63.14	45.08	0	97.99	38.91	33.43	43.40	48.87	27.24	54.25
Berryessa		4	2	100.00	48.57	29.73	53.14	38.63	0	70.51	56.79	59.19	45.57	41.97	61.22	55.03
Rose Garden		6	3	49.50	71.64	58.51	75.81	41.56	0	51.57	50.10	40.25	58.66	56.97	55.76	55.48
Almaden		10	2	82.41	36.09	18.05	41.40	63.96	0	82.18	74.11	64.80	57.62	59.33	60.57	58.23
Santa Teresa		2	3	72.22	24.33	32.09	72.52	57.55	0	93.06	64.68	55.94	56.40	70.75	56.62	59.65
Vineland		10	2	64.74	47.97	47.87	66.10	54.39	0	70.03	65.44	63.63	55.31	66.97	64.06	60.59
Alviso		4	1	17.62	87.15	100.00	72.03	49.37	1	86.44	66.68	44.76	68.79	47.61	48.37	62.62
Calabazas		1	3	55.86	69.76	69.94	75.93	23.21	1	97.65	60.74	72.21	64.52	47.02	63.10	63.63
Village Square		8	1	90.97	44.31	31.10	50.15	100.00	0	90.83	72.16	67.35	61.88	38.64	65.97	64.85



# Social Progress Index – Indicators and Metrics for San José

## BASIC HUMAN NEEDS



### Nutrition & Basic Medical Care

- Supermarket access (% of pop.)
- Kindergarten Vaccination Rate (% of kindergarteners)
- Preventative Care Visits (% of adults)
- Dental Care Visits (% of adults)



### Water & Sanitation

- Food Establishments Passing Inspection (% establishments)
- Impervious Surfaces
- Groundwater Threats



### Housing/Homelessness

- Housing Overcrowding (% of households)
- Housing Cost Burden (% of households, owners)
- Housing Cost Burden (% of households, renters)
- Displacement Risk
- Homelessness Density



### Personal Safety

- Crashes resulting in injury or death (per 1,000 pop.)
- Property Crime Rate (per 100,000 pop.)
- Violent Crime Rate (per 100,000 pop.)

## FOUNDATIONS OF WELLBEING



### Access to Basic Knowledge

- Population without high school education (% of pop. ages 18-24 without high school diploma or equivalent)
- Preschool Enrollment (% of 3 & 4 year olds)
- Third grade language arts proficiency (% of 3rd graders)
- Eighth grade math proficiency (% of 8th graders)



### Access to Information and Communications

- Average Broadband Speed (Mbps)
- Broadband Subscription (% of pop.)
- Cellular Data Subscription (% of pop.)



### Health & Wellness

- Obesity Prevalence (% of adults)
- Diabetes Prevalence (% of adults)
- Poor Mental Health Days



### Environmental Quality

- Traffic Volume (daily traffic volume per capita)
- Tree Canopy (% of land)
- Carbon Footprint (metric tons CO2)

## OPPORTUNITY



### Personal Rights

- Voter Registration Rate (% of voting eligible pop.)
- Voter Turnout (% of voting eligible pop.)
- Home Ownership (% of households)



### Personal Freedom & Choice

- Child Care Deserts
- Alternative Transportation Usage (% of commuters)
- Walkability Index
- Disconnected Youth (% of 16-19 year olds)



### Inclusiveness

- Residential Isolation (Non-white/white)
- Residential Segregation (Non-white/white)
- Gender Pay Gap
- Linguistic Isolation (% households)



### Access to Advanced Education

- Bachelors Degree Holders (% of pop. age 25+)
- Advanced Degree Holders (% of pop. age 25+)
- Associates Degree Holders (% of pop. age 25+)



# Personal Safety and Digital Inclusion

40

---

Traffic Calming Projects  
in 2019

45000

---

Safety Training Attendees  
in 2019

4000

---

City-owned light poles

\$500M

---

Private sector investment  
in small cell broadband



# 213

---

Census tracts in San José



# Downtown San José: 137/213

Category	Score/Value	Rank
<b>Basic Human Needs</b>	<b>27.23</b>	<b>206</b> ▼
<b>Nutrition and Basic Medical Care</b>	<b>44.57</b>	<b>123</b> ●
Dental Care Visits (% of adults)	66.80	123 ●
Kindergarten Vaccination Rate (% of kindergarteners)	96.53	107 ●
Preventative Care Visits (% of adults)	62.10	135 ●
Supermarket access (% of pop.)	33.98	102 ●
<b>Water and Sanitation</b>	<b>40.03</b>	<b>199</b> ▼
Food Establishments Passing Inspection (% establishments)	87.27	95 ●
Groundwater Threats	120.00	209 ▼
Impervious Surfaces	72.32	194 ●
<b>Housing/Homelessness</b>	<b>42.90</b>	<b>148</b> ●
Displacement Risk	3.00	138 ●
Homelessness Density	287.00	213 ▼
Housing Cost Burden (% of households, owners)	20.39	15 ▲
Housing Cost Burden (% of households, renters)	50.04	106 ●
Housing Overcrowding (% of households)	7.09	106 ●
<b>Personal Safety</b>	<b>7.8</b>	<b>208</b> ●
Crashes resulting in injury or death (per 1,000 pop.)	1.1	209 ▼
Property Crime Rate (per 100,000 pop.)	23,713.10	212 ▼
Violent Crime Rate (per 100,000 pop.)	5,592.99	211 ▼

Category	Score/Value	Rank
<b>Foundations of Wellbeing</b>	<b>58.61</b>	<b>60</b> ●
<b>Access to Basic Knowledge</b>	<b>56.65</b>	<b>66</b> ●
Eighth grade math proficiency (% of 8th graders)	34.90	135 ●
Population without high school education (% of pop. ages 18-24 without high school diploma or equivalent)	0.00	1 ●
Preschool Enrollment (% of 3 & 4 year olds)	84.06	37 ●
Third grade language arts proficiency (% of 3rd graders)	36.86	107 ●
<b>Access to Information and Communications</b>	<b>63.6</b>	<b>37</b> ●
Average Broadband Speed (Mbps)	264.76	78 ●
Broadband Subscription (% of pop.)	87.86	11 ●
Cellular Data Subscription (% of pop.)	71.54	16 ▲
<b>Health and Wellness</b>	<b>52.38</b>	<b>137</b> ●
Diabetes Prevalence (% of adults)	9.00	124 ●
Obesity Prevalence (% of adults)	22.30	151 ●
Poor Mental Health Days	10.40	121 ●
<b>Environmental Quality</b>	<b>62.45</b>	<b>54</b> ●
Tree Canopy (% of land)	6.25	109 ●
Traffic Volume (daily traffic volume per capita)	2.58	132 ●
Carbon Footprint (metric tons CO2)	20.73	3 ▲

Category	Score/Value	Rank
<b>Opportunity</b>	<b>51.87</b>	<b>75</b> ●
<b>Personal Rights</b>	<b>39.75</b>	<b>129</b> ●
Home Ownership (% of households)	30.56	188 ●
Voter Registration Rate (% of voting eligible pop.)	97.72	8 ▲
Voter Turnout (% of voting eligible pop.)	49.34	213 ▼
<b>Personal Freedom and Choice</b>	<b>60.98</b>	<b>22</b> ●
Alternative Transportation Usage (% of commuters)	23.97	9 ▲
Child Care Deserts	0.00	149 ●
Disconnected Youth (% of 16-19 year olds)	0.00	1 ●
Walkability Index	18.42	1 ▲
<b>Inclusiveness</b>	<b>56.19</b>	<b>80</b> ●
Gender Pay Gap	0.50	195 ●
Linguistic Isolation (% households)	6.45	84 ●
Residential Isolation (Non-white/white)	0.46	59 ●
Residential Segregation (Non-white/white)	0.21	93 ●
<b>Access to Advanced Education</b>	<b>53.14</b>	<b>103</b> ●
Advanced Degree Holders (% of pop. age 25+)	24.48	49 ●
Associates Degree Holders (% of pop. age 25+)	3.47	203 ▼
Bachelors Degree Holders (% of pop. age 25+)	34.89	19 ●

Strengths and weaknesses are relative to 10 census tracts of similar median household income. Median household income for this census tract is \$88,333

06085503804 06085512052 06085506401 06085503803 06085501900 06085503327  
06085503802 06085512020 06085503509 06085502302

No Selection	Expected
Very Overperforming	Underperforming
Overperforming	Very Underperforming



# Evergreen North: 136/213

Category	Score/Value	Rank	Category	Score/Value	Rank	Category	Score/Value	Rank
Basic Human Needs	52.66	87	Foundations of Wellbeing	45.97	132	Opportunity	34.56	160
Nutrition and Basic Medical Care	48.31	84	Access to Basic Knowledge	48.99	100	Personal Rights	34.17	156
Dental Care Visits (% of adults)	61.70	152	Eighth grade math proficiency (% of 8th graders)	44.66	93	Home Ownership (% of households)	67.49	98
Kindergarten Vaccination Rate (% of kindergarteners)	96.33	120	Population without high school education (% of pop. ages 18-24 without high school diploma or equivalent)	4.41	54	Voter Registration Rate (% of voting eligible pop.)	62.64	177
Preventative Care Visits (% of adults)	62.70	124	Preschool Enrollment (% of 3 & 4 year olds)	49.59	117	Voter Turnout (% of voting eligible pop.)	58.29	160
Supermarket access (% of pop.)	0.00	1	Third grade language arts proficiency (% of 3rd graders)	43.64	144			
Water and Sanitation	52.05	125	Access to Information and Communications	43.8	144	Personal Freedom and Choice	37.76	130
Food Establishments Passing Inspection (% establishments)	89.02	49	Average Broadband Speed (Mbps)	63.11	192	Alternative Transportation Usage (% of commuters)	10.42	100
Groundwater Threats	18.00	156	Broadband Subscription (% of pop.)	94.95	23	Child Care Deserts	0.23	105
Impervious Surfaces	59.23	135	Cellular Data Subscription (% of pop.)	57.97	113	Disconnected Youth (% of 16-19 year olds)	4.62	144
Housing/Homelessness	42.55	152	Health and Wellness	52.00	141	Walkability Index	10.17	76
Displacement Risk	1.00	1	Diabetes Prevalence (% of adults)	10.20	161	Inclusiveness	37.61	173
Homelessness Density	16.00	130	Obesity Prevalence (% of adults)	19.90	85	Gender Pay Gap	0.53	182
Housing Cost Burden (% of households, owners)	42.26	193	Poor Mental Health Days	10.80	131	Linguistic Isolation (% households)	20.06	162
Housing Cost Burden (% of households, renters)	57.55	143			Residential Isolation (Non-white/white)	0.80	176	
Housing Overcrowding (% of households)	14.33	159			Residential Segregation (Non-white/white)	0.17	43	
Personal Safety	71.9	47	Environmental Quality	40.01	151	Access to Advanced Education	29.39	170
Crashes resulting in injury or death (per 1,000 pop.)	0.2	102	Tree Canopy (% of land)	3.72	174	Advanced Degree Holders (% of pop. age 25+)	4.90	173
Property Crime Rate (per 100,000 pop.)	682.61	25	Traffic Volume (daily traffic volume per capita)	0.98	28	Associates Degree Holders (% of pop. age 25+)	7.21	112
Violent Crime Rate (per 100,000 pop.)	132.44	87	Carbon Footprint (metric tons CO2)	68.13	200	Bachelors Degree Holders (% of pop. age 25+)	17.68	157

Strengths and weaknesses are relative to 10 census tracts of similar median household income. Median household income for this census tract is \$96,048

06085506304 06085503332 06085506605 06085503312 06085502701 06085504417  
06085500100 06085512038 06085512026 06085502906

No Selection	Expected
Very Overperforming	Underperforming
Overperforming	Very Underperforming





# Hands-on Exercise



# Questions?

**Justin Edwards**

North American Director  
Social Progress Imperative  
[jedwards@socialprogress.org](mailto:jedwards@socialprogress.org)

**Dustin Davis**

Senior Data Analyst  
Social Progress Imperative  
[ddavis@socialprogress.org](mailto:ddavis@socialprogress.org)

**Andrew Ehrich**

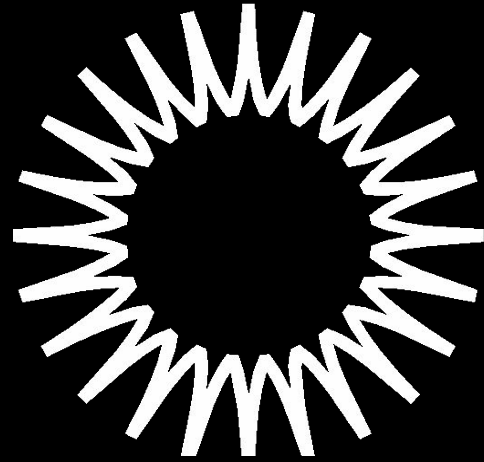
Data Analytics Lead  
Office of the City Manager  
City of San Jose  
[andrew.ehrich@sanjoseca.gov](mailto:andrew.ehrich@sanjoseca.gov)

**Kendra O'Donoghue**

Chief Advanced and Impact Officer, Senior Policy Advisor  
Mayor's Office of Strategic Initiatives  
Office of Mayor Sam Liccardo  
[andrew.ehrich@sanjoseca.gov](mailto:andrew.ehrich@sanjoseca.gov)

**Nicholas Almeida**

Budget Director and Chief Service Officer  
Mayor's Office of Strategic Initiatives  
Office of Mayor Sam Liccardo  
[nicholas.almeida@sanjoseca.gov](mailto:nicholas.almeida@sanjoseca.gov)



# SPUR

**Ideas + Action for a Better City**

learn more at [SPUR.org](http://SPUR.org)

*tweet about this event:*  
*@SPUR\_Urbanist*  
*#SocialProgress*