



WHAT'S NEW AT THE WATERFRONT?

SPUR Presentation
August 7, 2019

DRAFT WATERFRONT PLAN

Review through September 2019

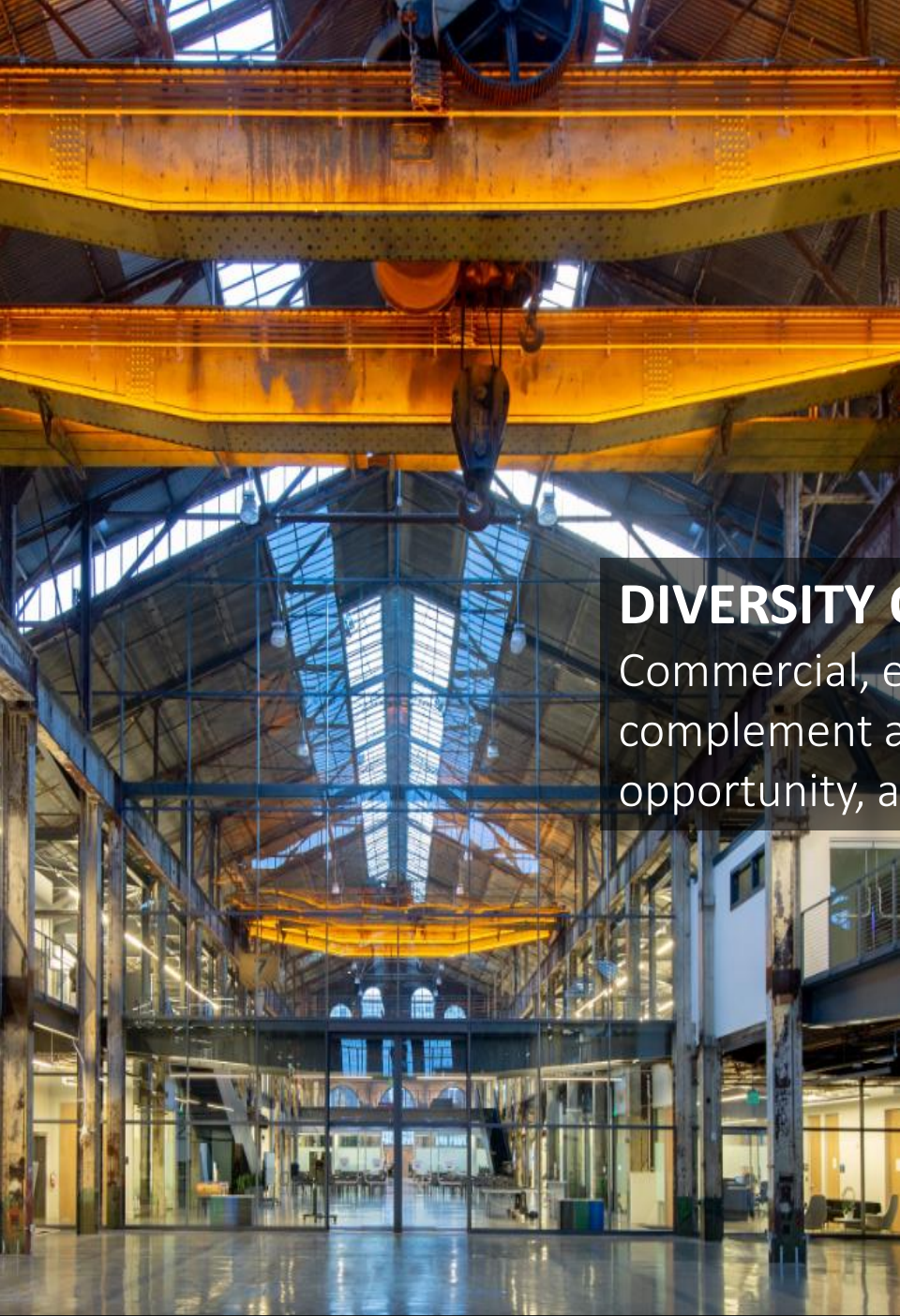
<https://sfport.com/waterfront-plan-update>

- 
- **Waterfront Plan Working Group led the 3 year public process**
 - **161 policy recommendations to update the Plan**
 - **Public goals, policies & implementation strategies**
 - **Guidance for waterfront adaptation and resilience**

A WORKING MARITIME PORT

Preserve the Port's diverse maritime portfolio for the needs of cargo shipping, cruise shipping, ferry and excursion boats, water taxis, fishing industry, ship repair, recreational boating and water-dependent activities





DIVERSITY OF ACTIVITIES & PEOPLE

Commercial, entertainment, civic activities & parks that complement a working waterfront, providing economic opportunity, and waterfront destinations for all



WATERFRONT PARKS & OPEN SPACE

Complete, enhance, and enliven the network of parks, public access, and natural areas along the San Francisco waterfront and Bay shoreline for everyone to use and enjoy





URBAN DESIGN, MINDFUL OF THE PAST, LOOKING TO THE FUTURE

- New developments of exemplary quality
- Visual and physical connections
- Preserving the waterfront's rich history
- Respecting neighborhood character



A FINANCIALLY STRONG PORT WITH ECONOMIC ACCESS TO ALL

New investment to stimulate waterfront revitalization and support a financially secure Port, equitably providing new jobs, revenues, public amenities, and other benefits to San Francisco and California citizens



Image Source:
https://www.sfmta.com/sites/default/files/imce-images/2018/events/1208_26_051_eline.jpg

TRANSPORTATION & MOBILITY FOR PEOPLE & GOODS

Manage the waterfront to support multiple modes of safe and sustainable transportation that serves workers, neighbors, visitors, and Port maritime and tenant operations



AN ENVIRONMENTALLY SUSTAINABLE PORT

Limit climate change impacts, improve the Bay ecology, and ensure healthy waterfront neighborhoods through the highest standards for environmental sustainability, stewardship, and justice

Image Source:
<http://www.thesfnews.com/wp-content/uploads/2015/11/High-Tide.png>



A RESILIENT PORT

Strengthen Port resilience to hazards and climate change effects while protecting community, ecological, and economic assets and services, with a focus on unique historic, maritime, and cultural assets

PARTNERING FOR SUCCESS

Deepen Port partnerships and community engagement to increase public understanding of Port and community needs and opportunities to facilitate completion of improvements that achieve Waterfront Plan goals



WATERFRONT PLAN SUBAREA OBJECTIVES



Waterfront Plan sets objectives and lists acceptable uses to guide Port strategic efforts in the Port's five different waterfront subareas

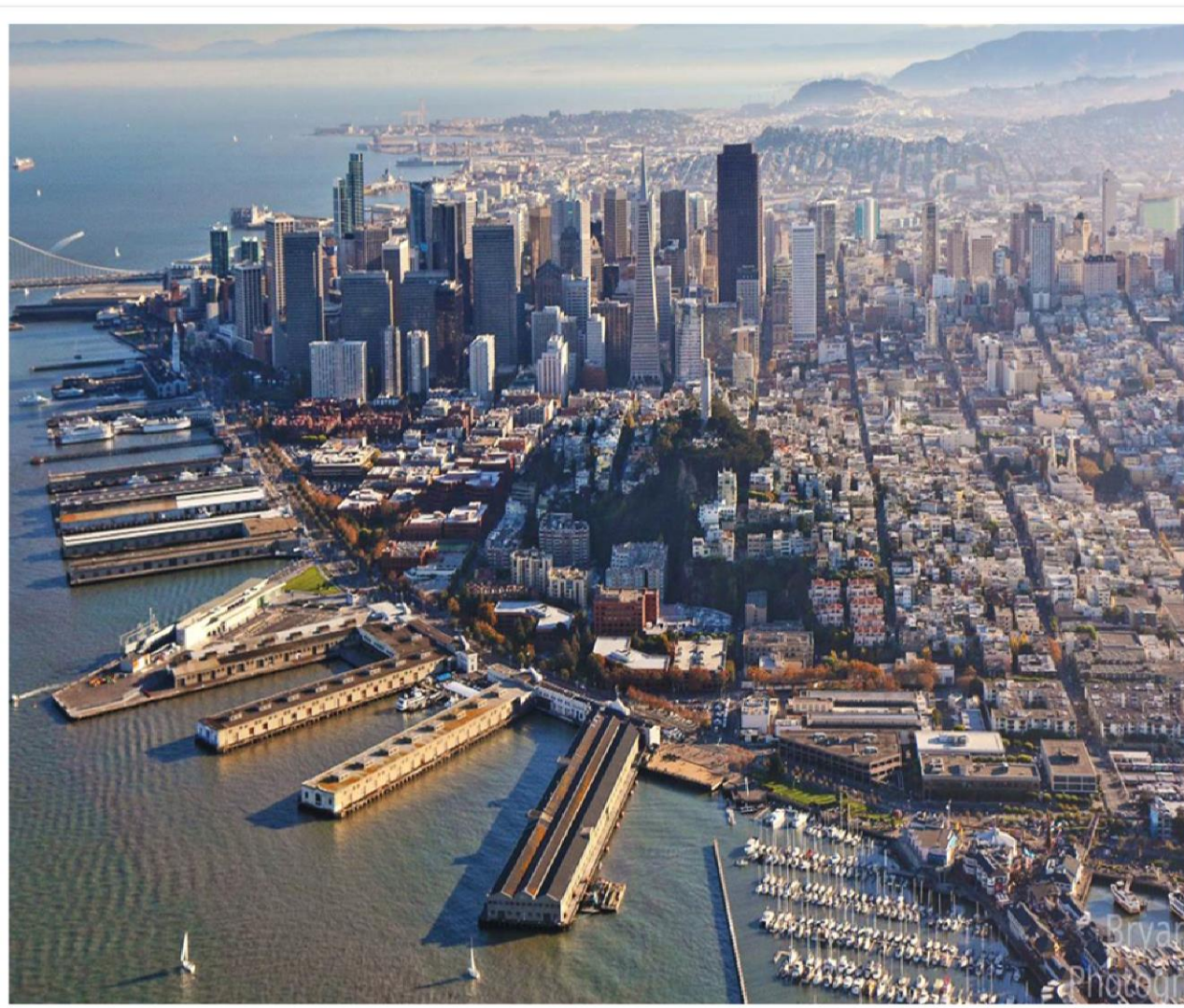
HISTORIC PIERS REHABILITATION PROGRAM



Rebecca Benassini, Port Real Estate & Development



EMBARCADERO HISTORIC DISTRICT: Putting Ideas into Action



- Open more piers to maritime and public trust uses
- Time is of the essence; accelerate historic rehabilitation
- Test market response to Emb. Hist. Dist. Policies
- Incorporate resilience and SLR adaptation

EMBARCADERO HISTORIC DISTRICT PUBLIC TRUST

The Port is dedicated to maintaining the integrity of the Embarcadero Historic District's nationally recognized historic maritime structures

The public trust objectives provide the framework for evaluating rehabilitation projects:

- Repairs and historic rehabilitation that meet Federal historic preservation standards
- Seismic and life safety repairs, flood and sea level rise adaptation
- Maritime and public access (trust) uses
- Public-oriented and trust uses inside piers
- Revenues to finance improvements and other Port needs
- Length of lease term as determined to amortize improvement costs

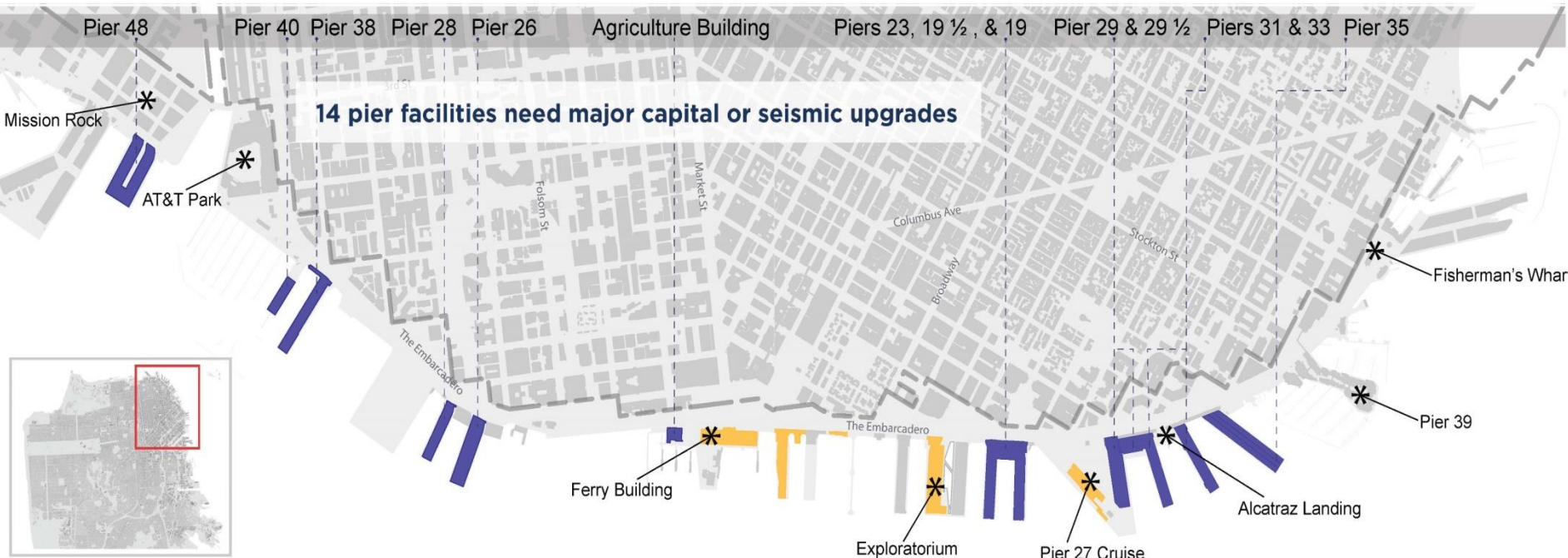


HISTORIC PIER REHABILITATION PROGRAM

- The Port and its partners have led successful projects to rehabilitate facilities, including:
 - Ferry Building
 - Pier 1.5, 3, 5 (Pacific Waterfront Partners)
 - The Exploratorium
 - James R. Herman Cruise Terminal
- Historic pier rehabilitation provides a policy-based route to building on these successful projects in other pier facilities.
 - Requires investment in capital, repairs, seismic upgrades, and flood protection
 - Delivers more public-oriented uses
 - Financed by mixed-use programs, including high-revenue uses like office
- Primary goal: reopen more Embarcadero Historic District structures to the public and to meet Port Public Trust objectives



MARKET TESTING: NON-BINDING REQUEST FOR INTEREST, OCT 2018



Request for Interest Locations:

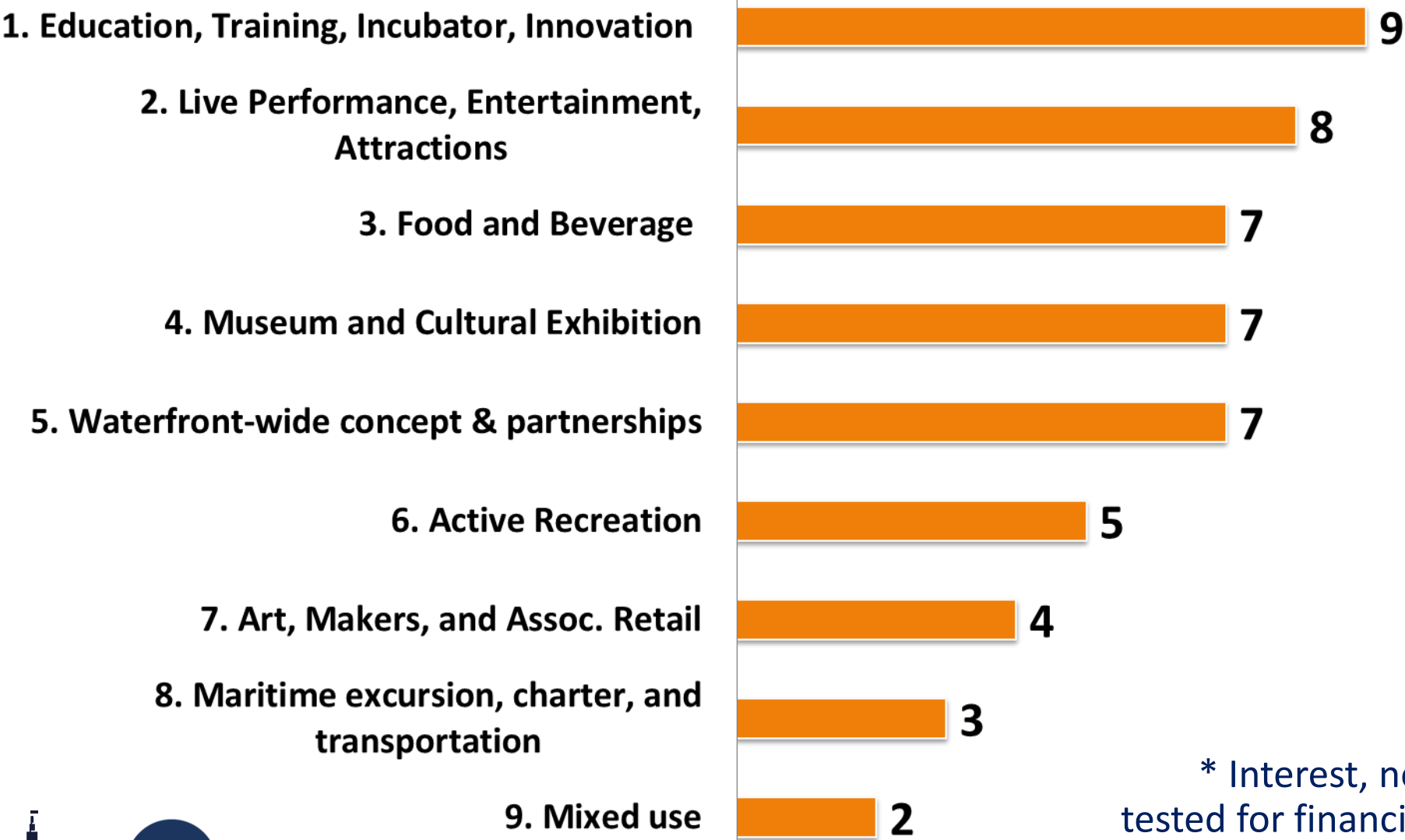
- Pier 35 (maintaining secondary cruise terminal and special event operations)
- Pier 33 (portions of bulkhead and shed)
- Pier 31 (portions of bulkhead and shed)
- Pier 29 & 29 1/2
- Pier 23
- Pier 19 & 19 1/2
- Agriculture Building
- Pier 26
- Pier 28
- Pier 38
- Pier 40 (maintaining water recreation uses)
- Pier 48 (in connection with Mission Rock Project)

RFI Location

Seismically Improved

Port Property

52 EXPRESSIONS OF INTEREST* RECEIVED



* Interest, not tested for financial feasibility or other factors

PORT REQUIRES PRIVATE CAPITAL PARTNERS FOR PIER PROJECTS

Risks to Historic District

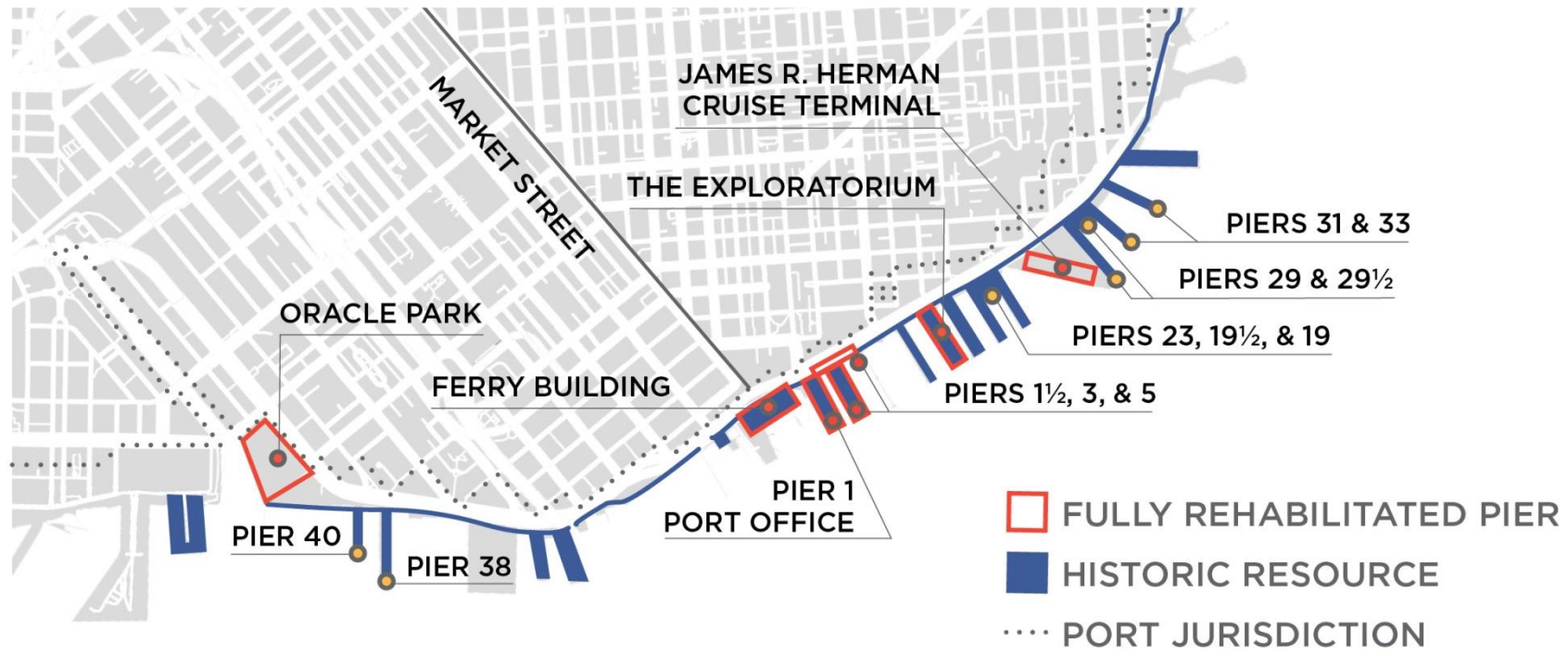
- Deterioration
- Flooding
- Earthquake

Very costly rehabilitation

- Converting warehouse to uses which invite public in & more dense workplaces
- Addressing risks



HISTORIC PIER REHABILITATION PROGRAM



RFP to seek development partners to open more piers to the public and pursue economic, maritime, cultural, and public improvements

RFP #1: Piers 38 & 40
RFP #2: Piers 19, 23, & 29-31

6 successful historic rehabilitation projects

16 facilities yet to be repaired and improved

EMBARCADERO HISTORIC DISTRICT PUBLIC TRUST OBJECTIVES

A strategy for economically feasible pier leases and projects

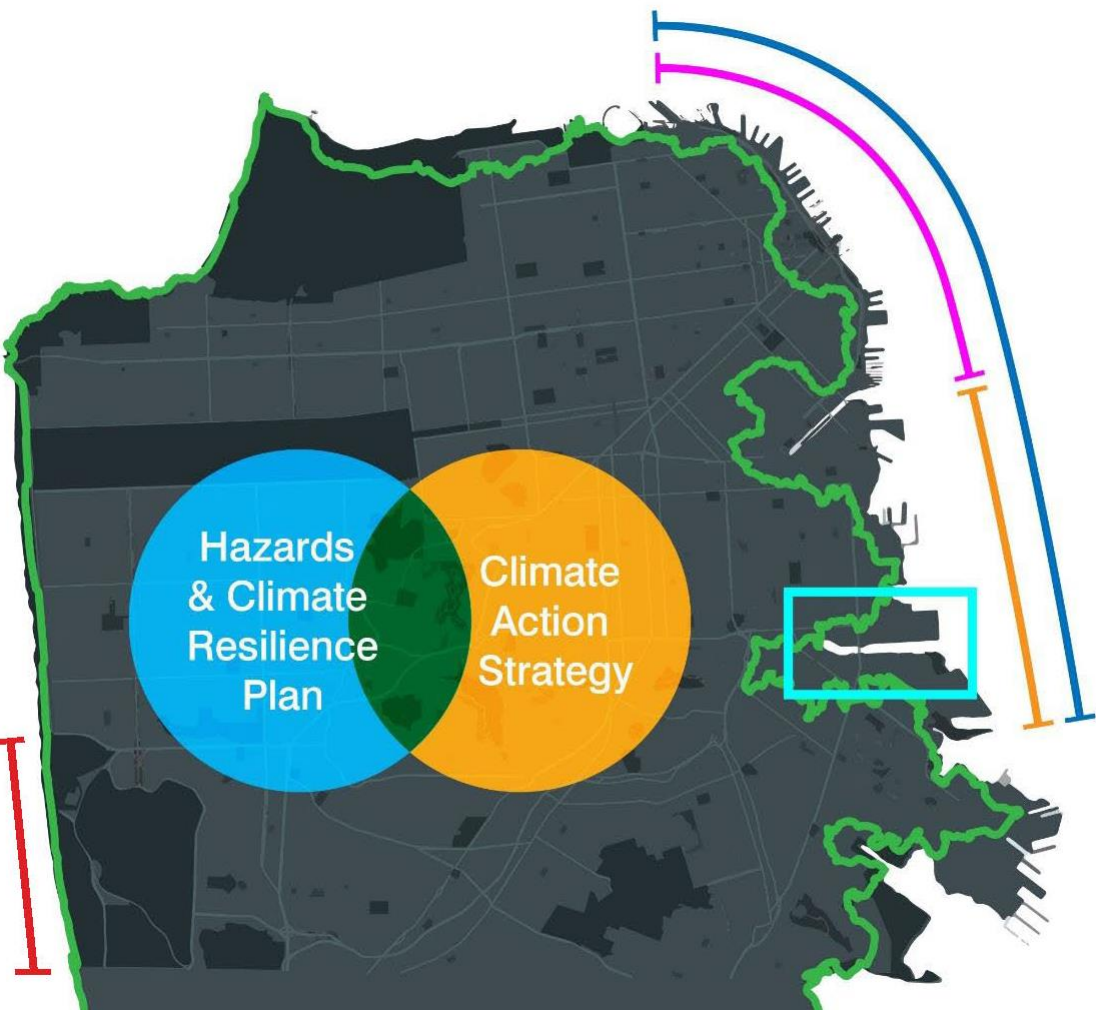
Public Trust Objectives

- Historic preservation
- Seismic/life safety
- Public access
- Generate Port revenue for improvements to other Port facilities.
- Public-oriented uses

Financially Feasible Projects with:

- Seismic upgrades
- Historic Rehabilitation
- Trust & public-oriented uses
- Revenue generation uses

CITYWIDE RESILIENCE EFFORTS



CITYWIDE PLANS AND STRATEGIES

- Sea level Rise Action Plan
- Hazards & Climate Resilience Plan
- Climate Action Strategy

SHORELINE ASSESSMENTS AND PROJECTS

- Southern Waterfront Seismic Vulnerability Assessment
- Embarcadero Seawall Program
- USACE/Port Flood Study
- Islais/Southeast Mobility Adaption Strategy
- Ocean Beach Implementation

PORT OF SAN FRANCISCO'S WATERFRONT RESILIENCE PROGRAM

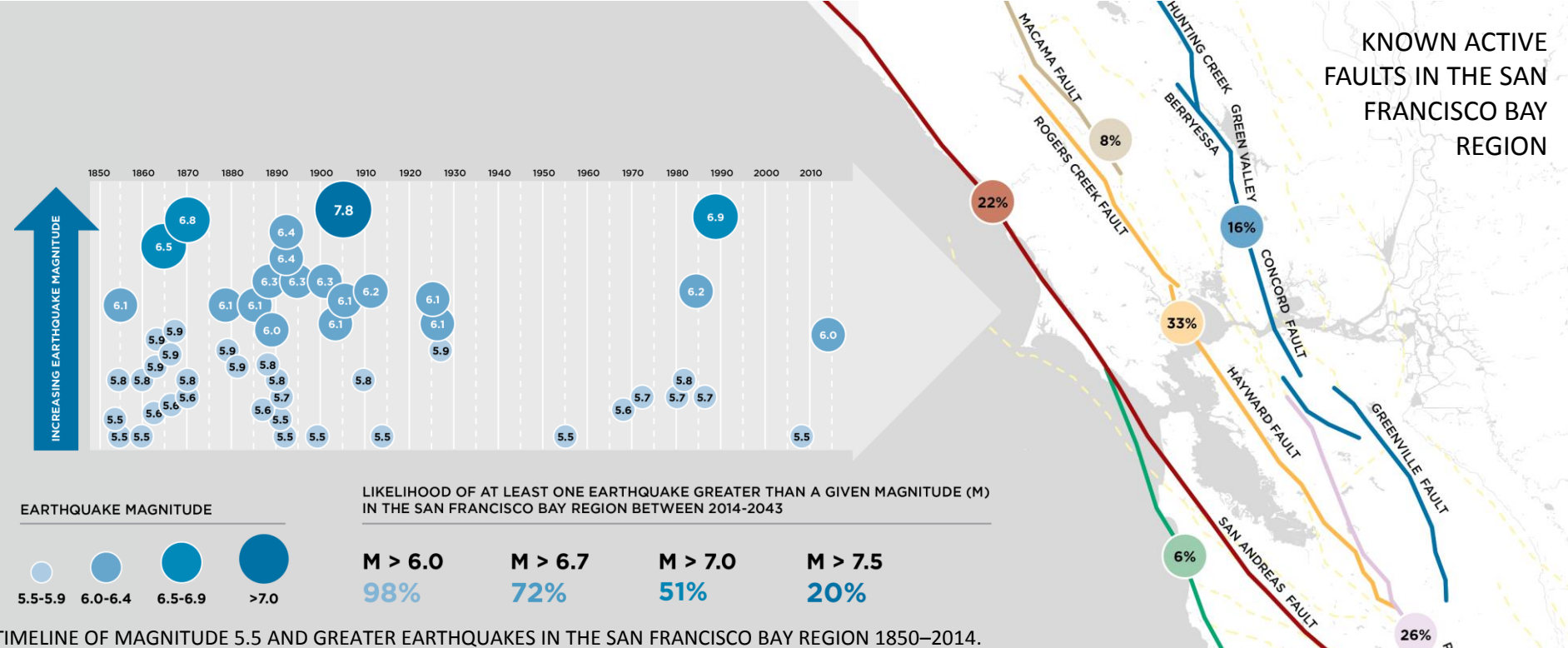


The Port of San Francisco's Waterfront Resilience Program will create a safe, equitable, sustainable, and inspiring waterfront.



PRIMARY HAZARD

SAN FRANCISCO'S EARTHQUAKE RISK



72%
likelihood of a
major
earthquake
by 2043

Historically
quiet
period
since 1906

San Andreas
and Hayward
Faults are
highest risks

PRIMARY HAZARD

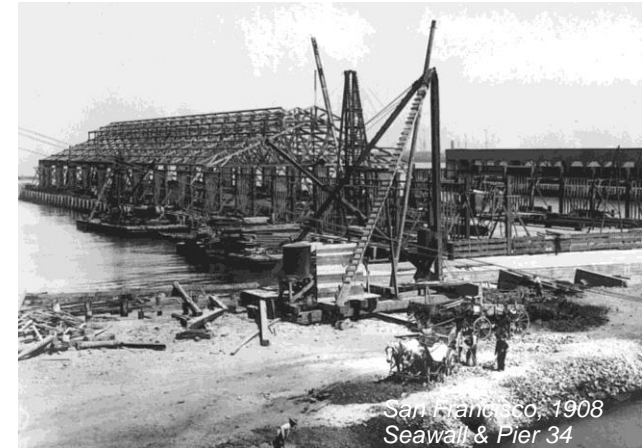
THE PORT'S UNIQUE EARTHQUAKE RISK



LIQUEFACTION



SHORELINE STABILITY &
LATERAL SPREADING



INFRASTRUCTURE & BUILDINGS
BUILT PRIOR TO SEISMIC CODES

- *Un-Engineered Fill placed over Young Bay Mud*
 - Amplifies ground shaking increasing damage in smaller earthquakes
 - Susceptible to Liquefaction
- *Unstable Shoreline Edge*
 - Lateral Spreading & Settlement hundreds of feet behind shoreline
- Infrastructure and buildings built prior to seismic standards

PRIMARY HAZARD: *COASTAL FLOOD RISK & SEA LEVEL RISE*



INTERMITTENT AND LOCALIZED
FLOODING TODAY



SLR IS INCREASING FLOOD RISK TO
CRITICAL ASSETS



FUTURE SLR WILL CAUSE REGULAR
TIDAL FLOODING

- San Francisco faces increasing flood risk due to sea level rise and subsidence of fill
- Some shoreline areas already experience regular flooding during King Tides
- A 100 year flood event today would create significant disruption to critical assets and services
- San Francisco's shoreline will flood more frequently, and new areas will begin to experience flooding in the coming decades

WATERFRONT RESILIENCE PROGRAM ADAPTATION FRAMEWORK



STRENGTHEN ELEMENT

Objective: Immediately implement highest priority disaster response and life safety projects along the Embarcadero Seawall.



ADAPT ELEMENT

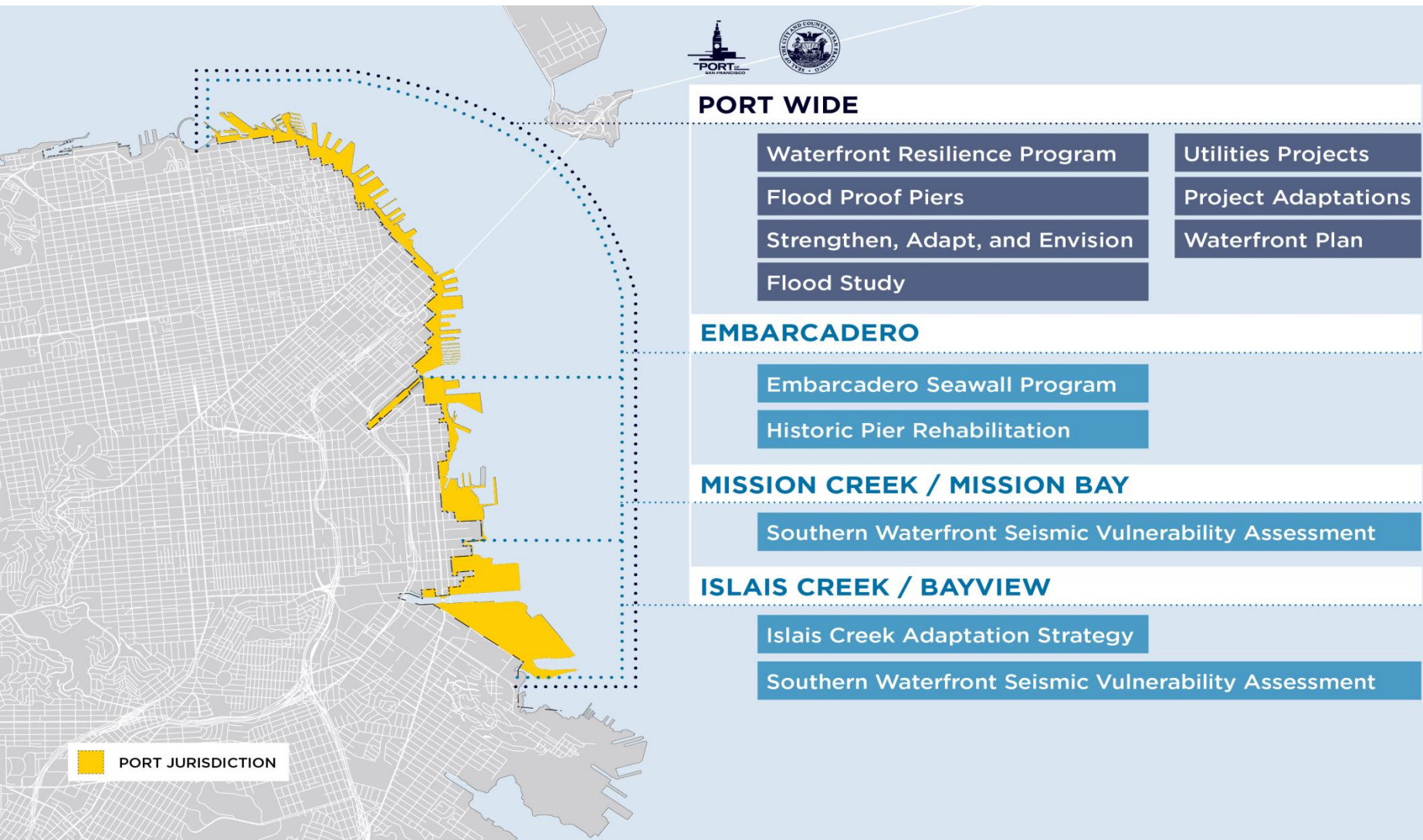
Objective: Reduce remaining seismic and increasing flood risks, respond to changing priorities, and provide a framework for the Port to adapt over time.



ENVISION ELEMENT

Objective: Develop visions that can respond to higher water levels, changes in priorities and science, resulting in a waterfront that is resilient to 2100 and beyond.

PORT OF SAN FRANCISCO'S WATERFRONT RESILIENCE WORK



EMBARCADERO SEAWALL PROGRAM OVERVIEW



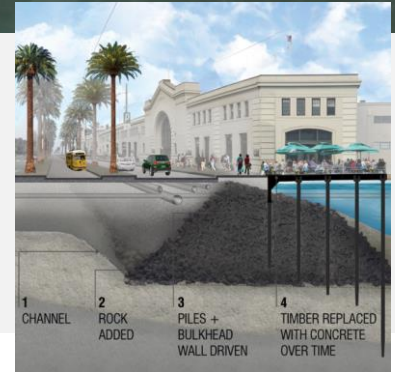
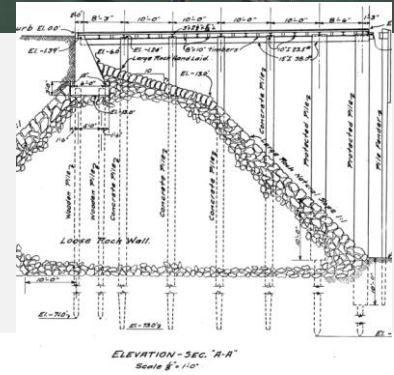
SEAWALL PROGRAM OVERVIEW

- Priority is protecting life safety and emergency response from seismic events
- Approximately \$5 billion over 30+ years
- Funding and financing from City, state, federal, and private
- Address as much flood risk as possible and create a foundation for addressing future flood risk
- Adaptive Program framework
- Robust engagement and outreach

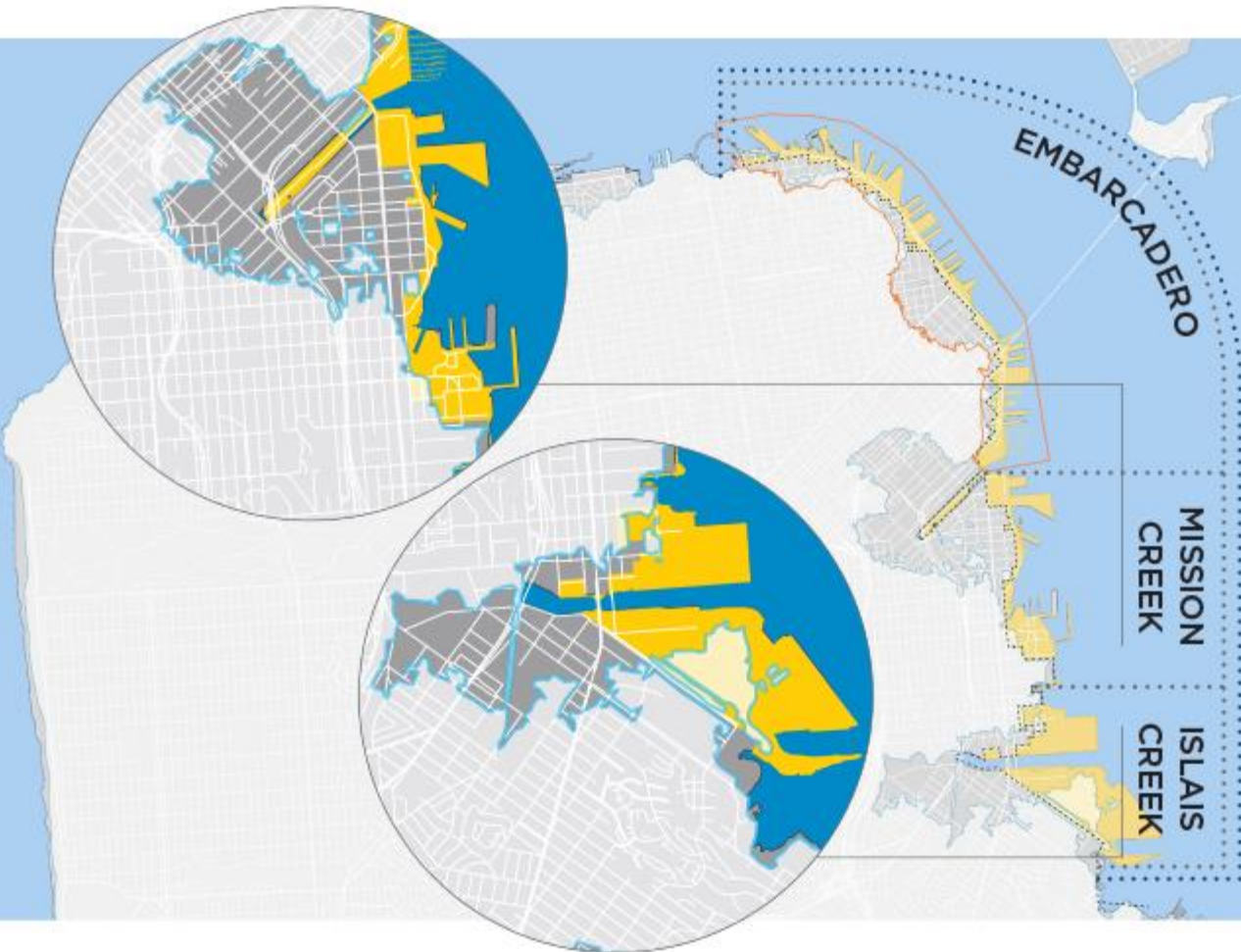
UNDERSTANDING THE EMBARCADERO SEAWALL



- Built 1878 to 1915
- Rock dike and bulkhead
- 3 miles long
- 500 acres of filled land
- 126 acres pier and wharves today



USACE/PORT FLOOD STUDY OVERVIEW



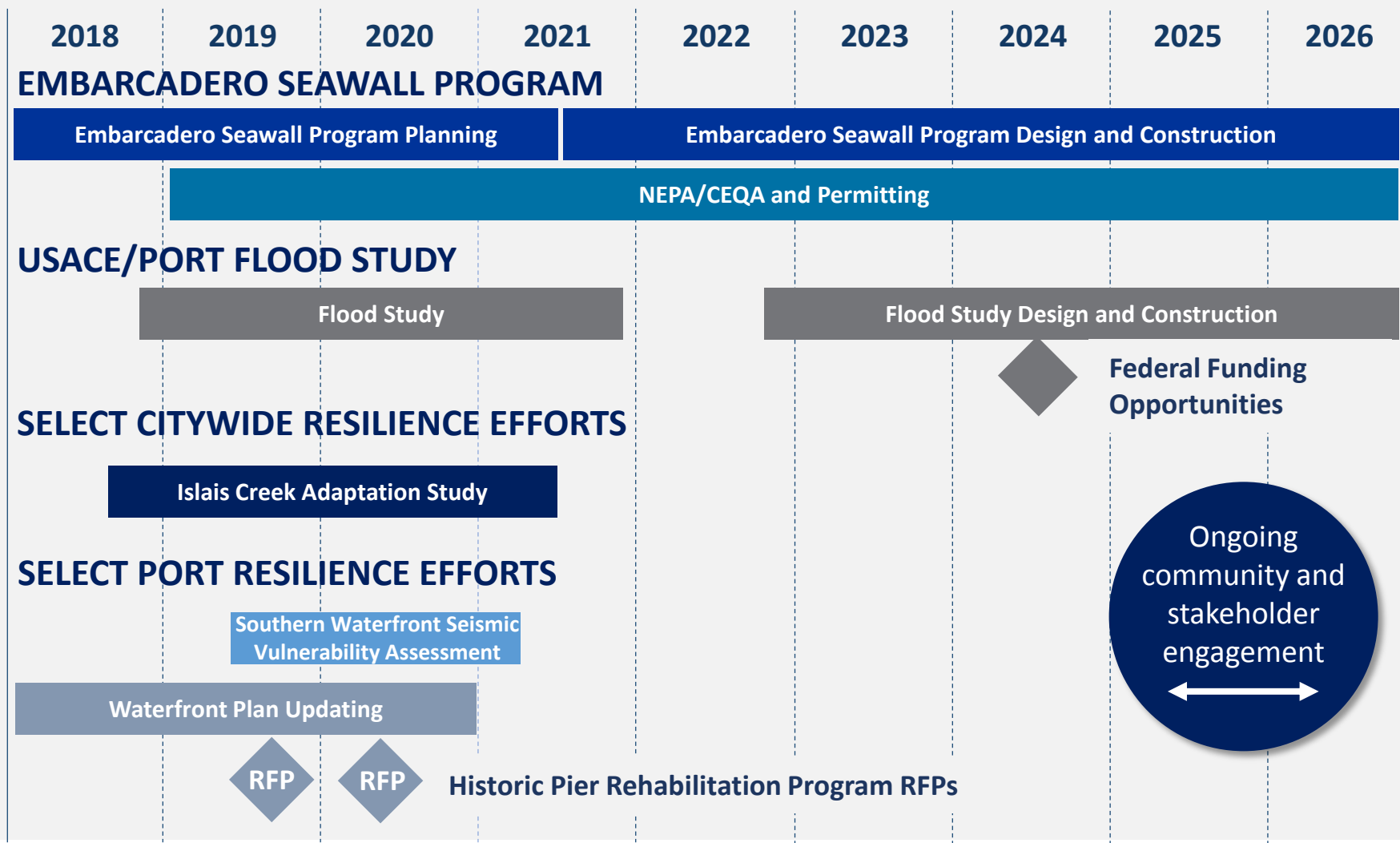
HIGHLIGHTS

- Federal funding and expertise
- Port is the local sponsor, seeking assistance since 2012
- Flood Study is entire Port jurisdiction + Aquatic Park
- Study ~5 years, ~\$20M
- Study Cost shared 50% federal /50% local

STUDY OVERVIEW

- Evaluate flood risk including storms and sea level rise
- 50 year economic (2080) and 100 year planning horizon (2120)
- Determine damages assuming no action, develop & evaluate broad range of plans to reduce flood risk.
- Culminates in a funding recommendation to Congress
- Design/construction of federal plan cost shared 65% fed/35% local
- Locally preferred plan can be selected, sponsor pays extra cost

WATERFRONT RESILIENCE PROGRAM TIMELINE



UPCOMING OPPORTUNITIES TO ENGAGE

OPPORTUNITIES TO ENGAGE

- Community meetings with engagement exercises
- Roadshows to keep stakeholders up-to-date
- Event outreach
- Digital engagement, including an interactive website and webinars
- Site tours (boat, bike, and walking)
- And much more...
- Have an idea for an opportunity to engage? Please let us know!



QUESTIONS? AND THANK YOU!



Diane.Oshima@sfport.com

Rebecca.Benassini@sfport.com

Steven.Reel@sfport.com



www.sfport.com

EMBARCADERO AREA

ASSETS WITH FLOOD & SEAWALL EARTHQUAKE HAZARDS



The Port collected information on existing assets along the Embarcadero Seawall with City agencies, partners, and community stakeholders

INFRASTRUCTURE



URBAN AND CULTURAL



PARKS AND ECOSYSTEMS



MARITIME



DISASTER RESPONSE



MISSION CREEK/MISSION AREA ASSETS & FLOOD HAZARD



ASSET MAPPING

The Port and the Army Corps are collecting information on existing assets with City agencies, partners and community stakeholders

INFRASTRUCTURE



URBAN AND CULTURAL



MARITIME



PARKS AND ECOSYSTEMS



DISASTER RESPONSE



BAYVIEW/ISLAIS CREEK AREA ASSETS & FLOOD HAZARD



ASSET MAPPING

The Port and the Army Corps are collecting information on existing assets with City agencies, partners and community stakeholders

INFRASTRUCTURE



URBAN AND CULTURAL



PARKS AND ECOSYSTEMS



MARITIME



DISASTER RESPONSE

