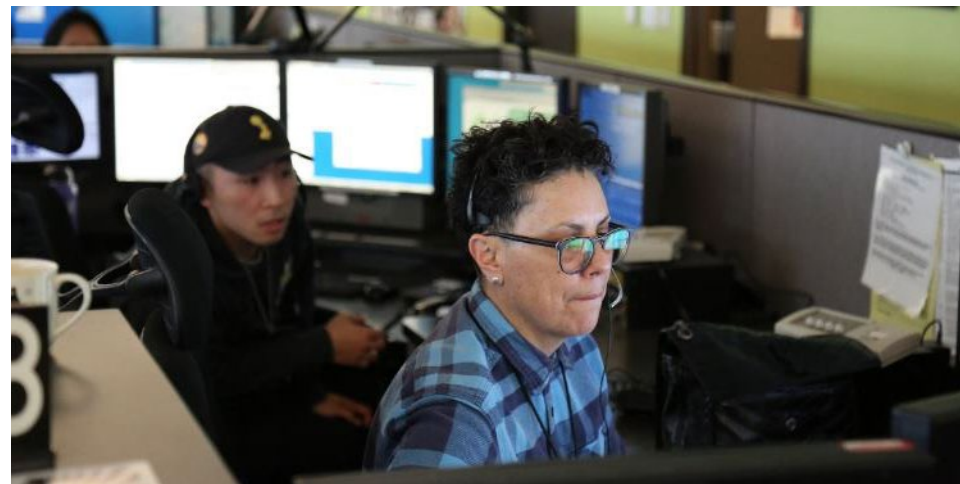


ESER 2020

**Earthquake Safety
and Emergency
Response Bond**

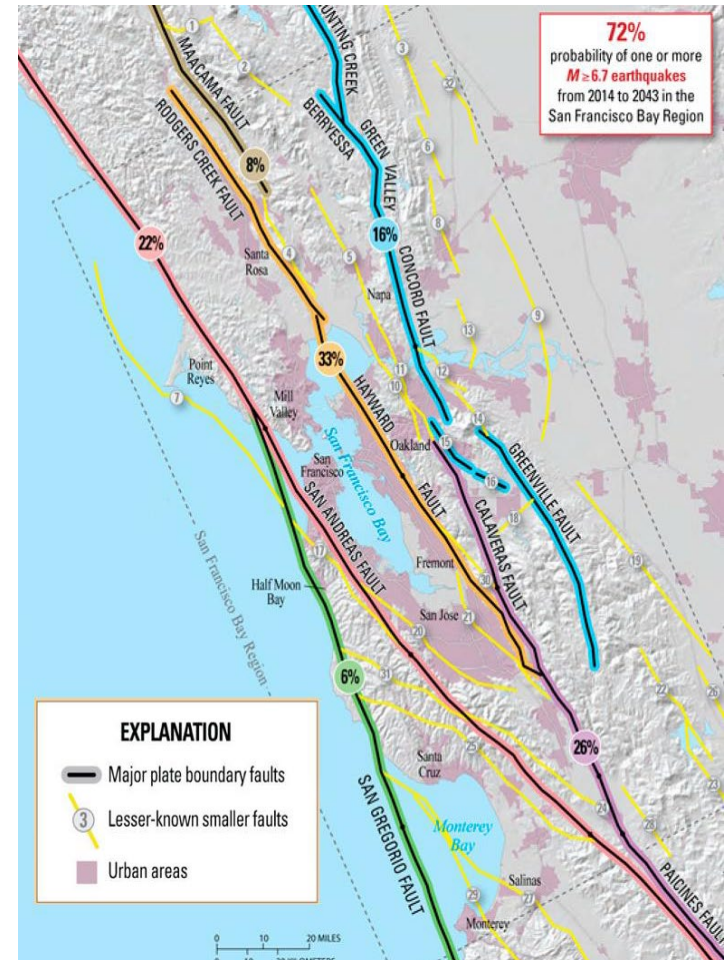


ONESF
Building Our Future



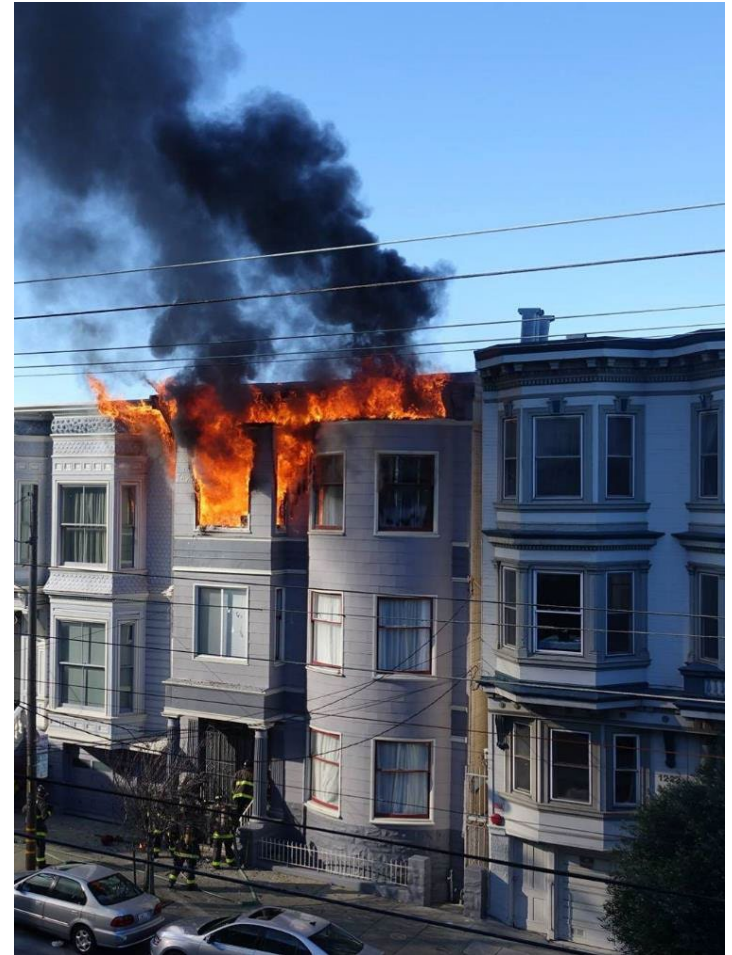
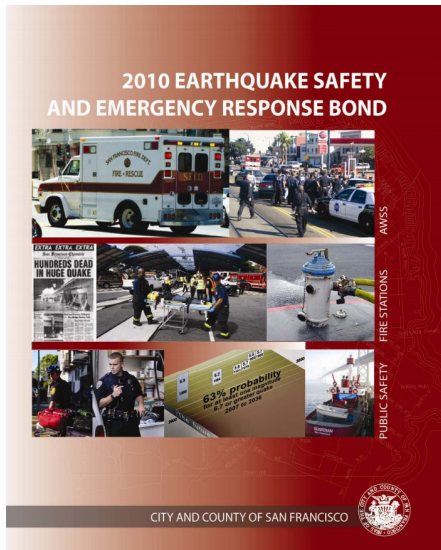
A City Built on Fault Lines

- There is a 72 percent chance of a 6.7 or greater magnitude earthquake striking the Bay Area in the next 20 years
- Previous earthquakes have proven the need to improve our first response facilities



Act Now for a Safer Tomorrow

- Delaying improvements increases the cost and exposes San Franciscans to more risk following a disaster
- Previous ESER bonds (2010 and 2014) received overwhelming support from San Francisco voters



ESER 2010: Bond Breakdown

Component	Budget
Neighborhood Fire Stations and Support Facilities	\$65.1 million
Emergency Firefighting Water System (EFWS)	\$104.2 million
Public Safety Building	\$243 million
Total	\$412.3 million*

*100% of ESER 2010 funds have been appropriated



ESER 2014: Bond Breakdown

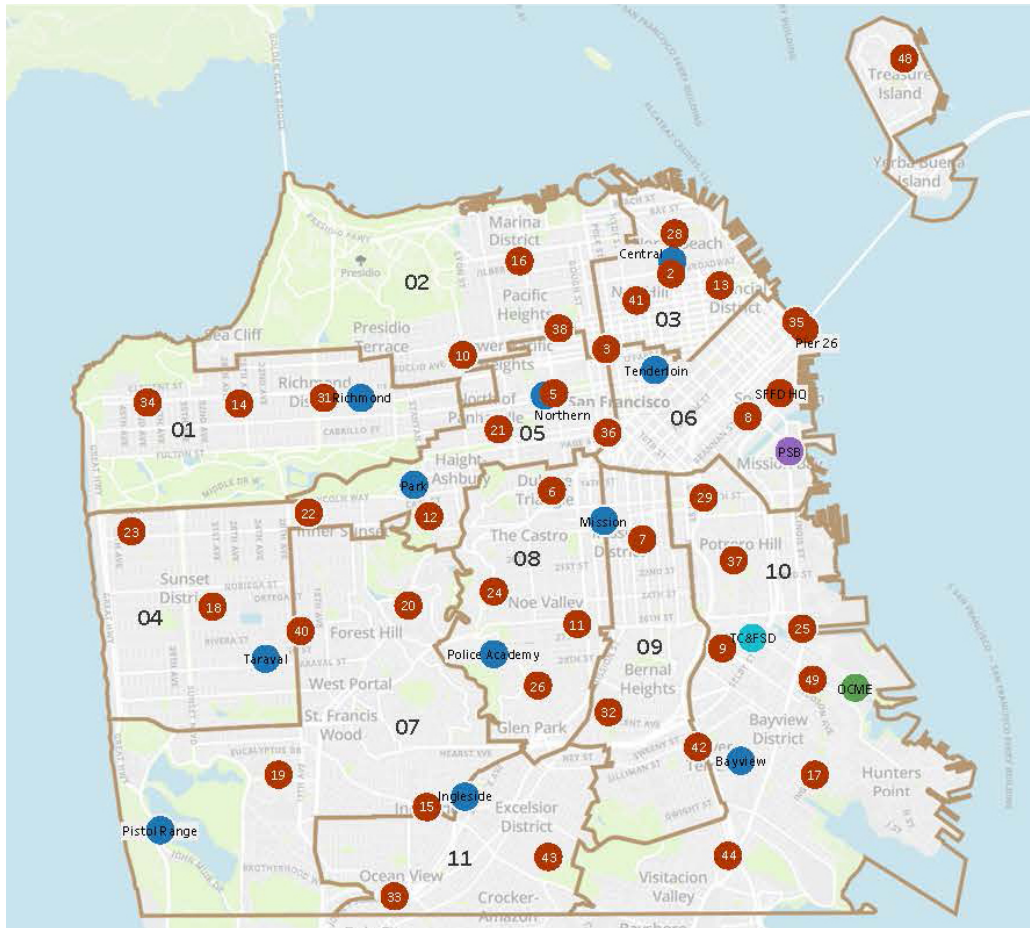
Component	Budget
Neighborhood Fire Stations and Support Facilities	\$85 million
District Police Stations and Support Facilities	\$30 million
Traffic Company and Forensic Services Division	\$165 million
The Office of the Medical Examiner	\$65 million
Emergency Firefighting Water System (EFWS)	\$55 million
Total	\$400 million*

*100% of ESER 2014 funds have been appropriated



Previous ESER Project Locations

First Response Facilities



- Neighborhood Fire Stations
- District Police Stations
- Public Safety Building
- Motorcycle Police and Crime Lab
- Office of the Chief Medical Examiner

- Previous ESER work touches every San Francisco neighborhood
- More work is needed to further strengthen these facilities

ESER 2010 and 2014 Accomplishments

- **Public Safety Building:** opened in spring 2015
- 30 new cisterns, six pipeline and tunnel projects and upgrades at the **EFWS** primary water sources
- **Office of the Chief Medical Examiner:** opened in fall 2017
- **Motorcycle Police and Crime Lab:** scheduled to begin this summer
- Accessibility, plumbing, exterior and electrical improvements at **8 of the 10 district police stations**



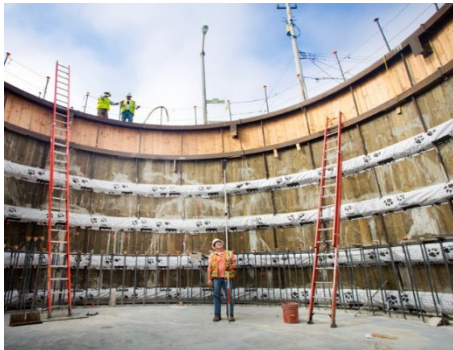
ESER 2010 and 2014 Accomplishments

- **Fire Station No. 4:** opened in spring 2015
- **Fire Station No. 16:** opened in winter 2019
- **Fire Station No. 5:** opened in spring 2019
- **Fireboat Station at Pier 22 ½:** in progress
- Focus scope upgrades at **35 neighborhood fire stations**



ESER 2020: Bond Breakdown

Component	Budget
Emergency Firefighting Water System	\$153.5 million
Neighborhood Fire Stations and Support Facilities	\$275 million
District Police Stations and Support Facilities	\$121 million
Disaster Response Facilities	\$70 million
9-1-1 Call Center	\$9 million
Total	\$628.5 million



Scope of Work Overview

- **Emergency Firefighting Water System:** focusing on the City's western neighborhoods
- **Neighborhood Fire Stations and Support Facilities:** seismic upgrades, comprehensive renovations and focused scope improvements; building a new, resilient training facility at a site to be determined
- **District Police Stations and Support Facilities:** seismic upgrades, comprehensive renovations and focused scope improvements
- **Disaster Response Facilities:** retrofitting and renovating infrastructure that can be used for shelter and recovery
- **9-1-1 Call Center:** increasing the number of dispatch stations and the amount of training space



ESER 2020 Prioritization: Facilities

Criteria spelled out in the bond report:

Fire and Police Stations

Similar to ESER 2010 and 2014, facilities projects at public safety stations will be selected based on the relative seismic risk, renewal need and operational and tactical importance of the facilities to ensure effective deployment of first responders in the event of a major earthquake or disaster.

Disaster Response Facilities

City-owned buildings with sufficient capacity to serve multiple disaster response functions that pose serious risk of casualties and/or significant financial impact will be prioritized.

Emergency Firefighting Water System

Purpose:

- Utilized for the most extreme events
- Designed as a line of defense during a catastrophic event
- Magnitude 7.8 earthquake is assumed for purposes of planning and design



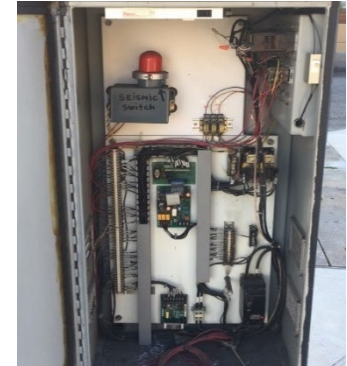
EFWS Components



High-pressure hydrants



Motorized valves



Seismic switches



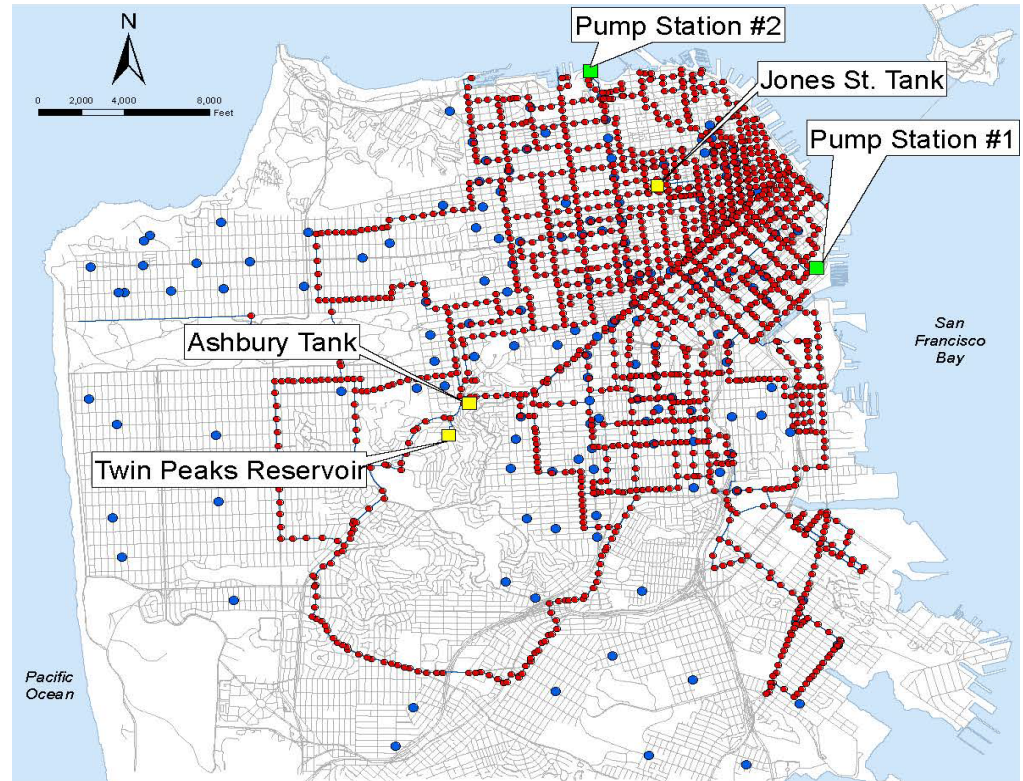
Resilient pipelines



Valve batteries

2010 EFWS System Map

- Approximately 135 miles pipes
- 1 reservoir - 10 million gallons
- 2 tanks
- 2 seawater pumping stations
- 176 functional cisterns
- 1,575 hydrants

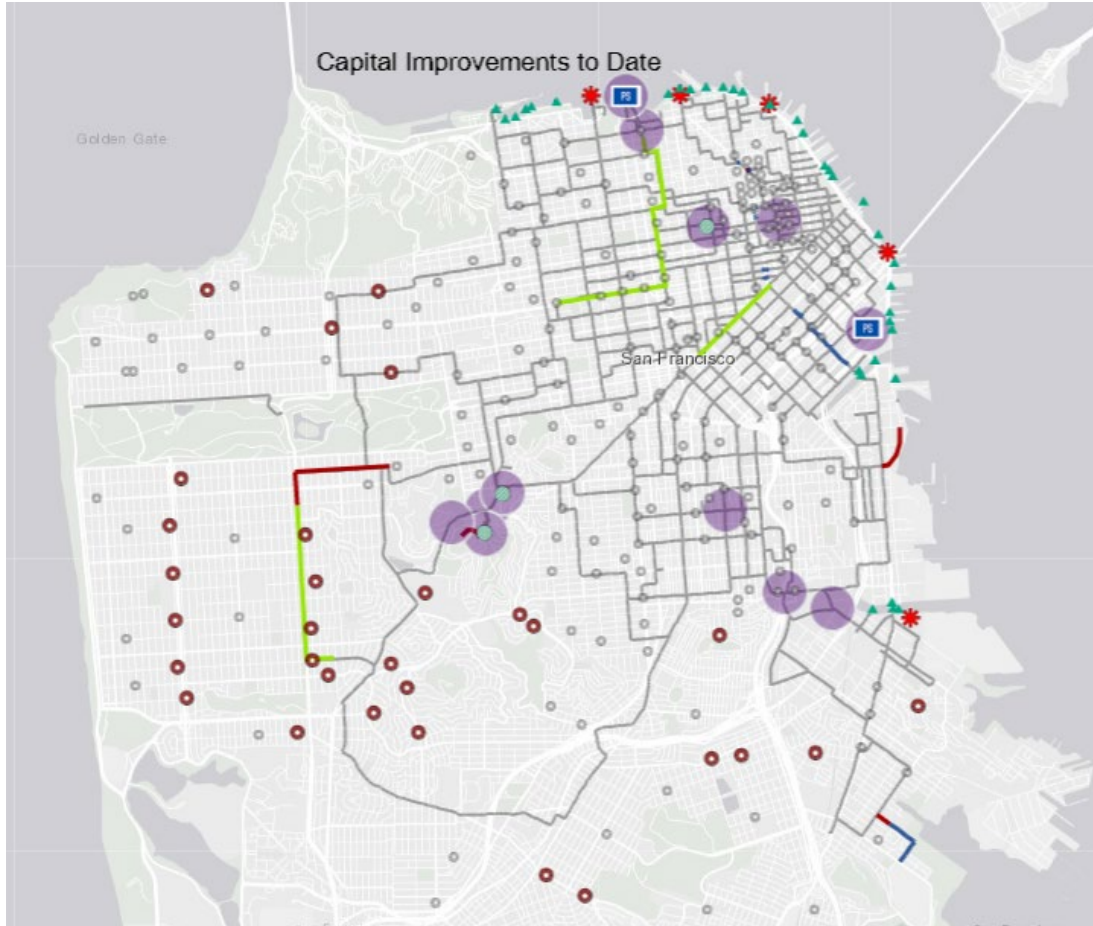


Legend

- AWSS Hydrants
- Functional Cisterns
- Pump Stations
- Tanks/Reservoir
- Existing Pipes

Previous ESER Project Locations

Emergency Firefighting Water System (EFWS)



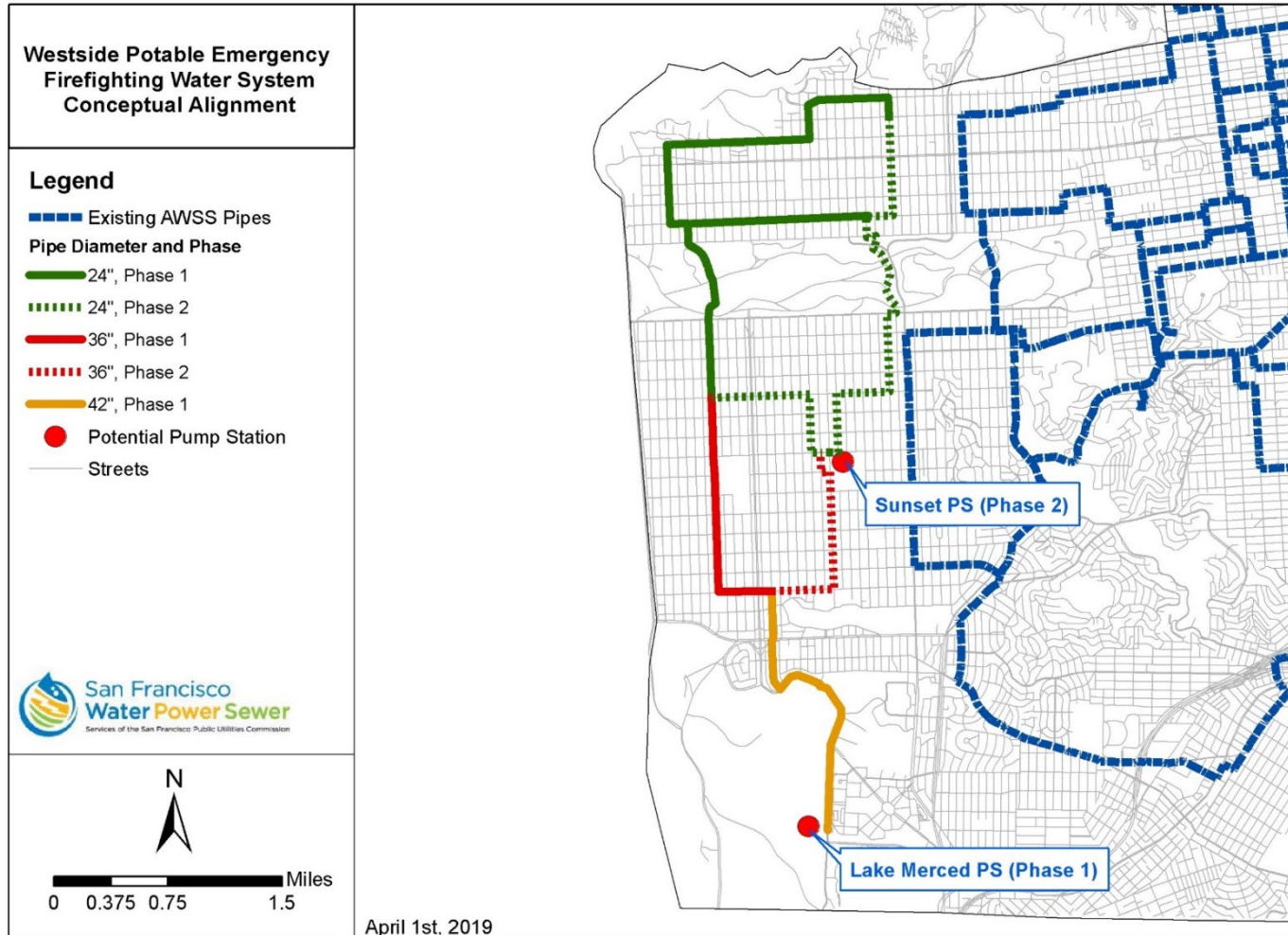
ESER 2020 Prioritization: EFWS

Focusing on the City's western neighborhoods

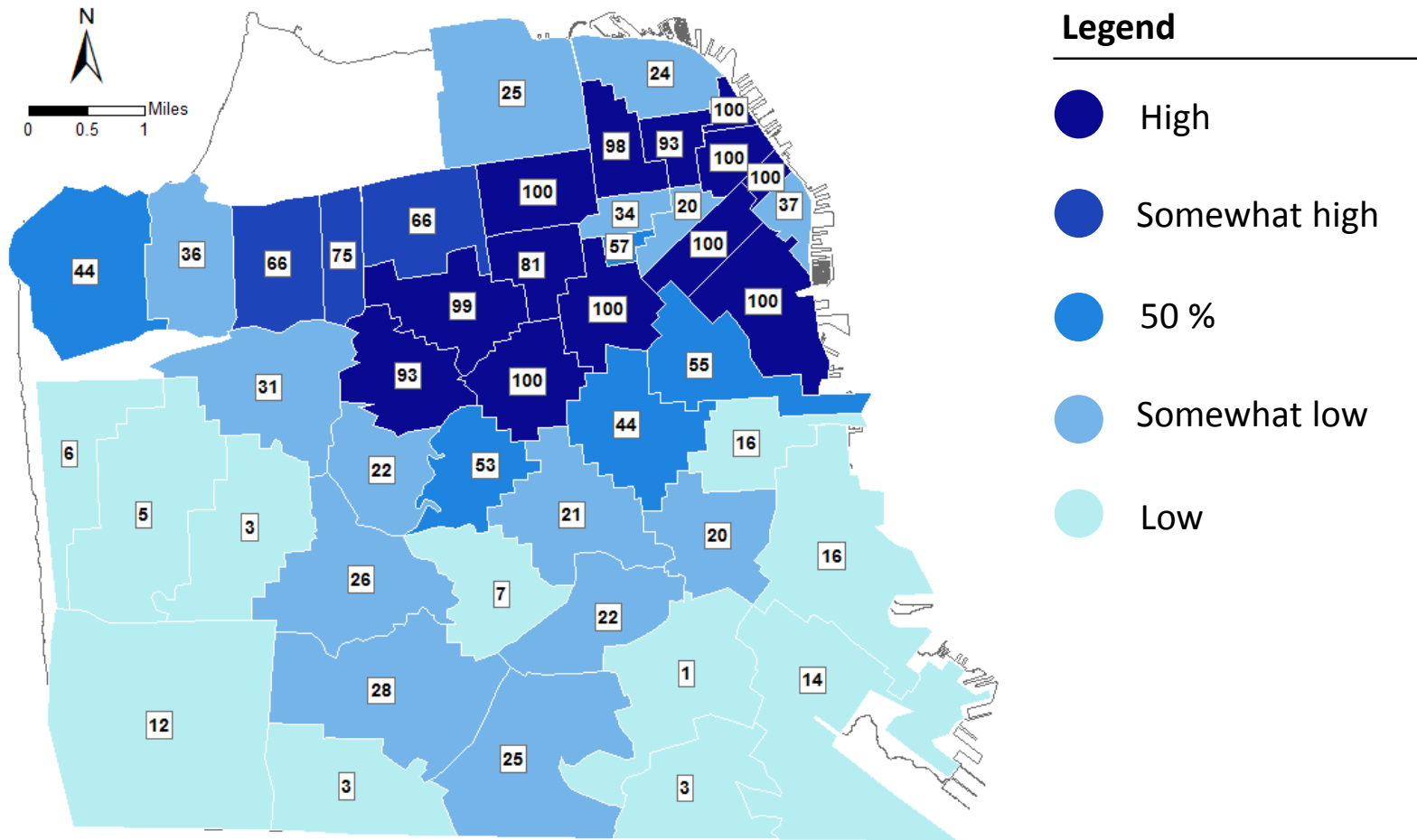
Manifold Projects



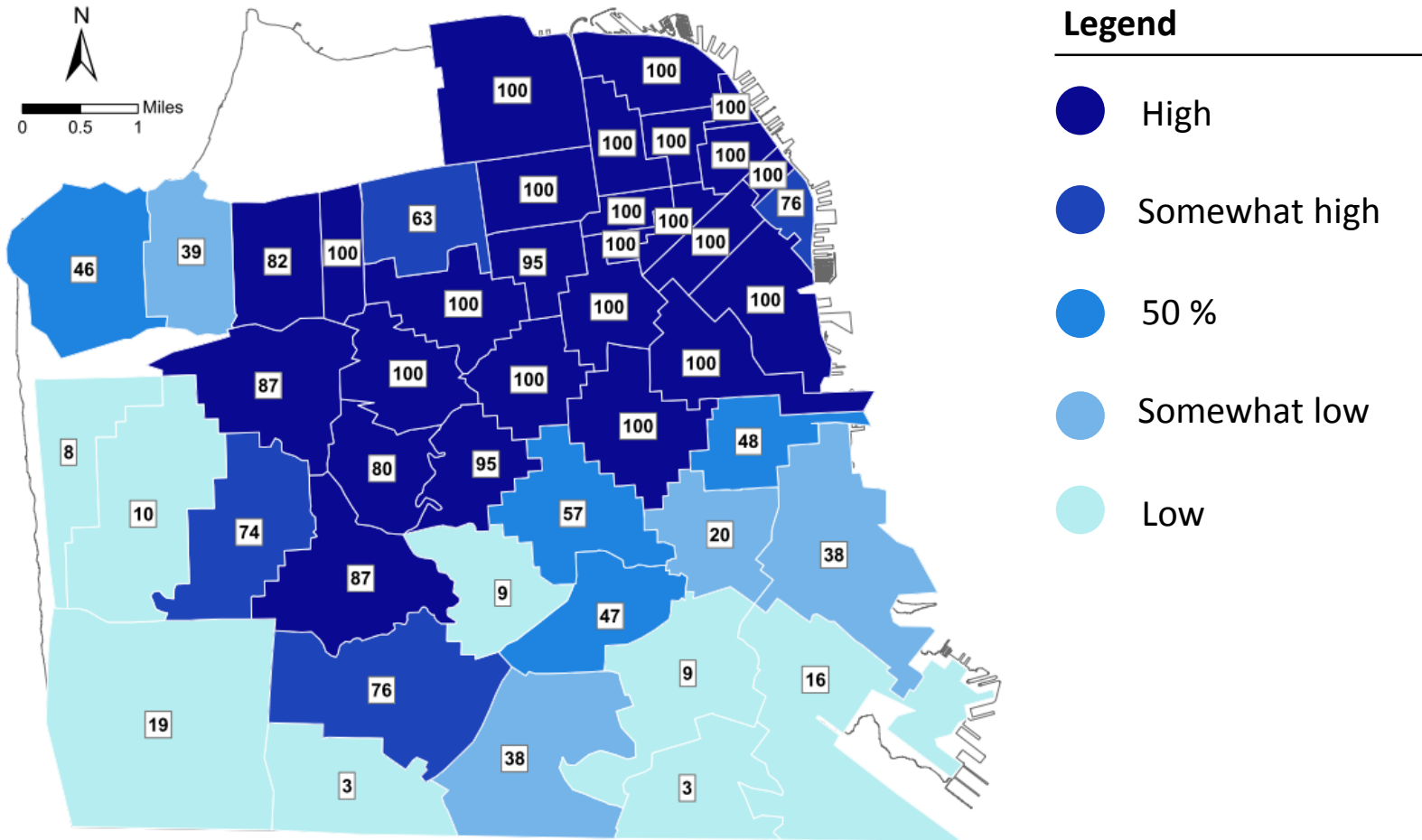
Potential Conceptual Alignment - Westside



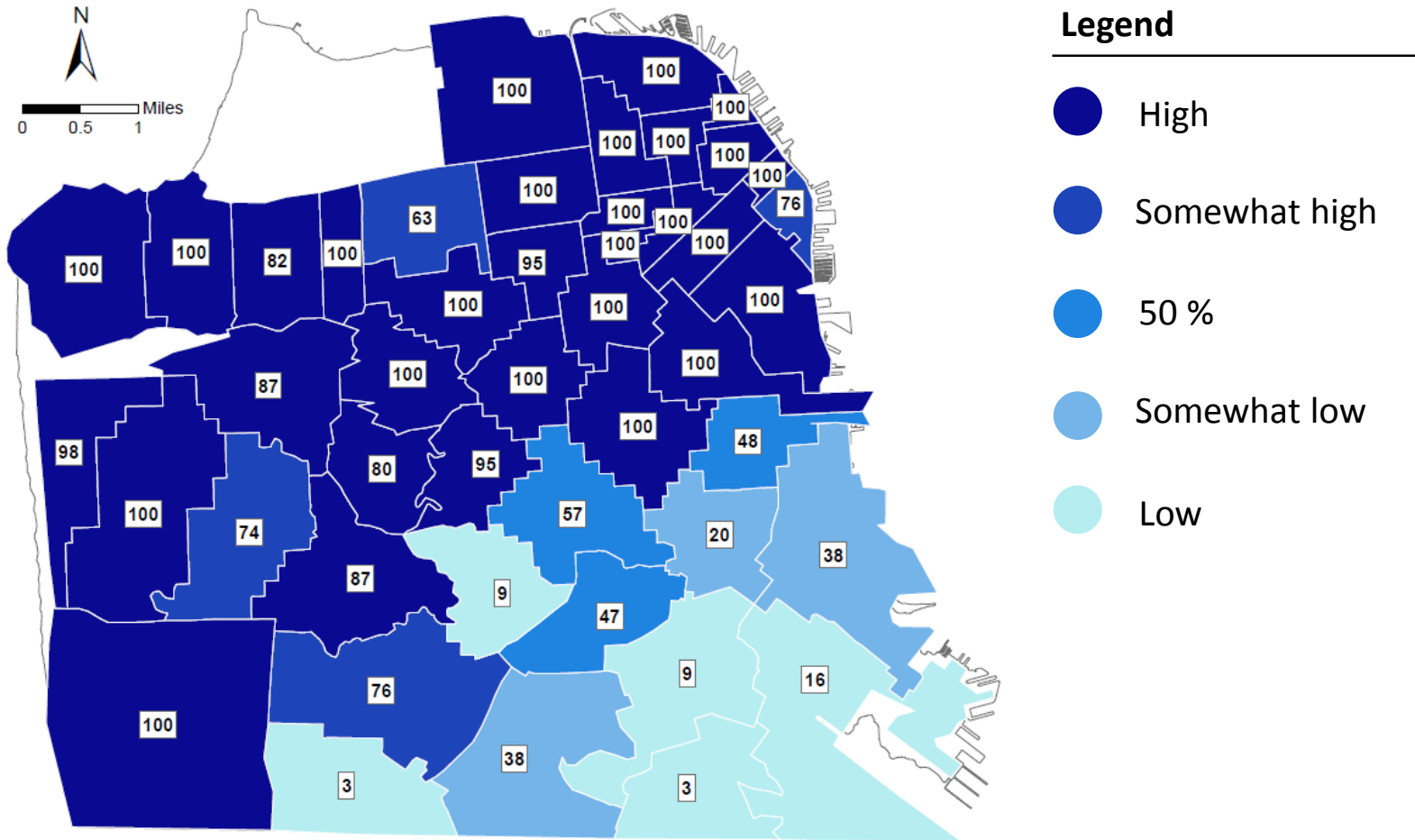
Reliability: EFWS before ESER 2010



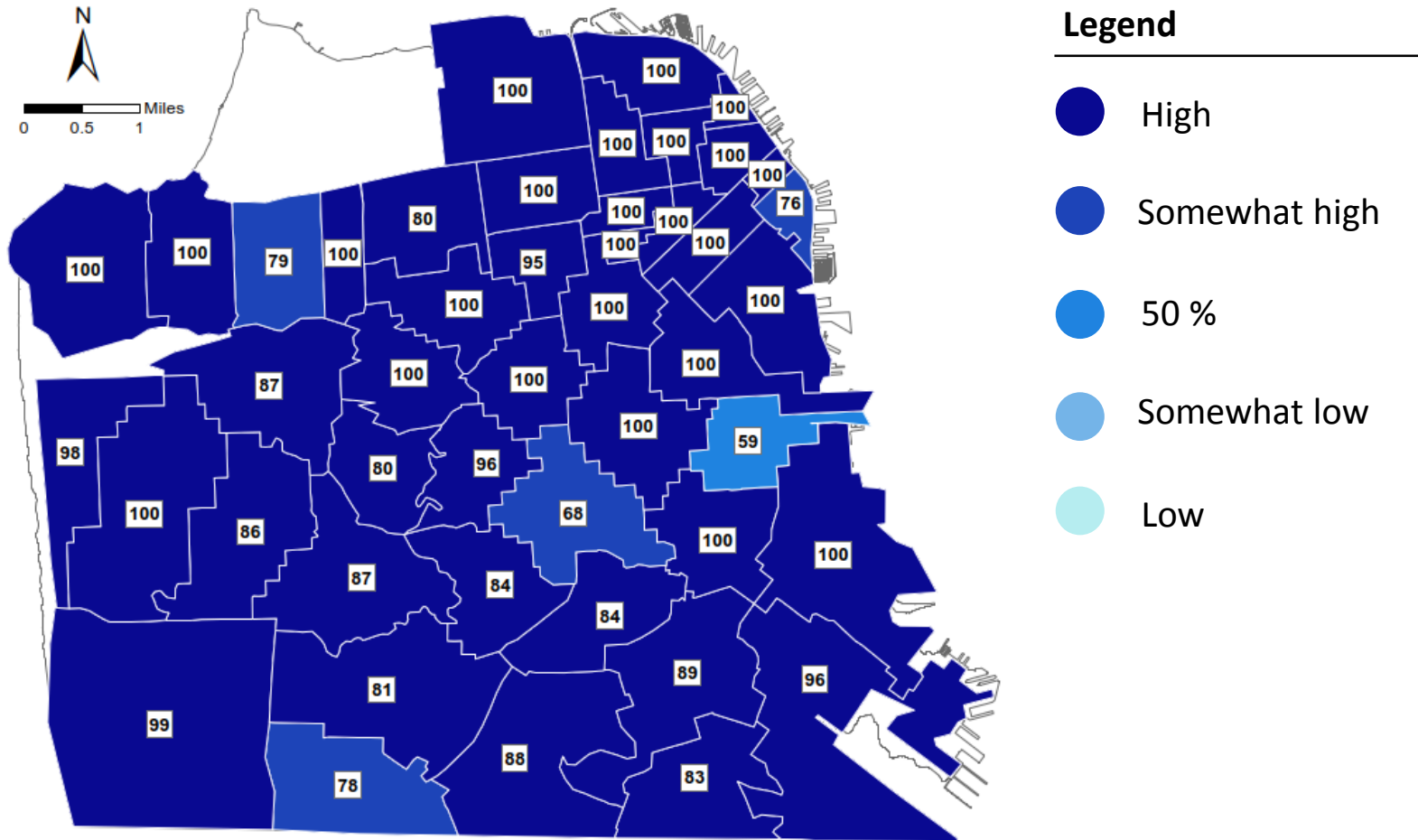
Reliability: After ESER 2010 & 2014



Reliability: After ESER 2020



Reliability: All Conceptual Projects



ESER Accountability

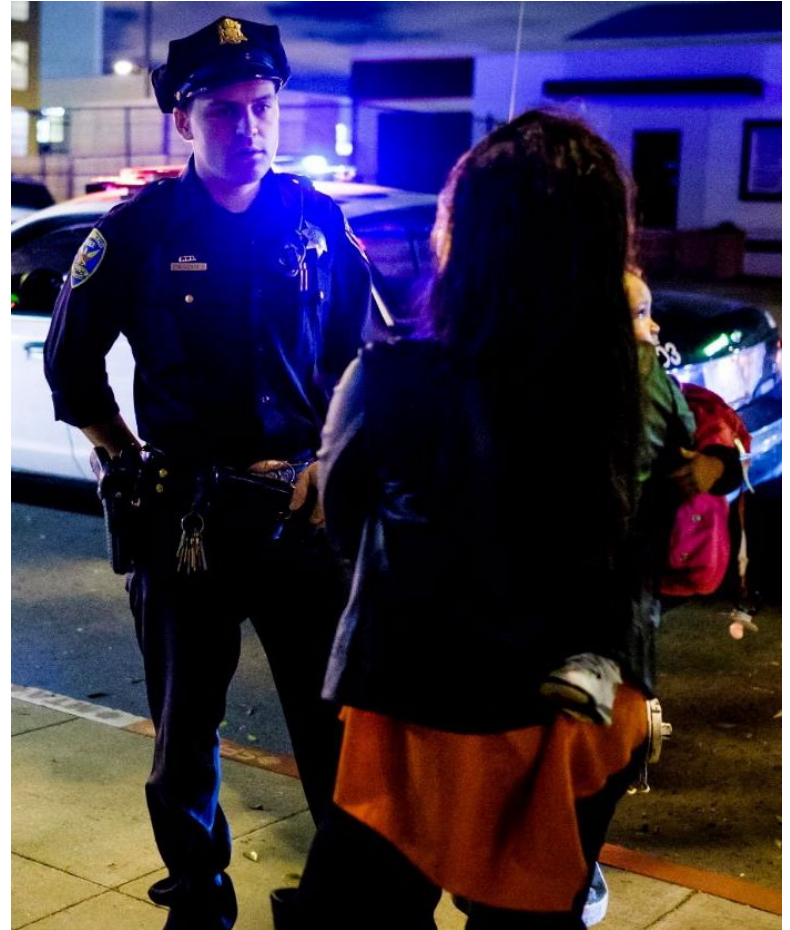
ESER will abide by established standards for accountability, fiscal responsibility and transparency.

- Policy compliance
- Transparency
- Bond accountability reports
- Public Appropriation of Capital Funds
- Citizens' General Obligation Bond Oversight Committee (CGOBOC)
- Annual public review
- Public Updates



Keeping up with a Growing City

- ESER 2020 will allow us to act now for a safer tomorrow
- With a growing population comes an increase in calls for emergency response
- Responding quickly in an emergency reduces the number of injuries, deaths and damage done to people and property



ESER: Safeguarding San Francisco



This bond is vital to ensure our public safety systems are ready for the next major earthquake, fire or other disaster and to build a resilient San Francisco.

sfearthquakesafety.org

Questions and Comments

