

Plaza Apartments

Client and Ownership

- Public Initiatives Development Corporation, the nonprofit arm of SFRA (now OCII)
- Desire to create exemplary sustainable bldg.

Type

- Supportive Housing for formerly homeless (SROs)
- Retail
- Bindlestiff Theater

Density

- 106 units (520 du/acre)

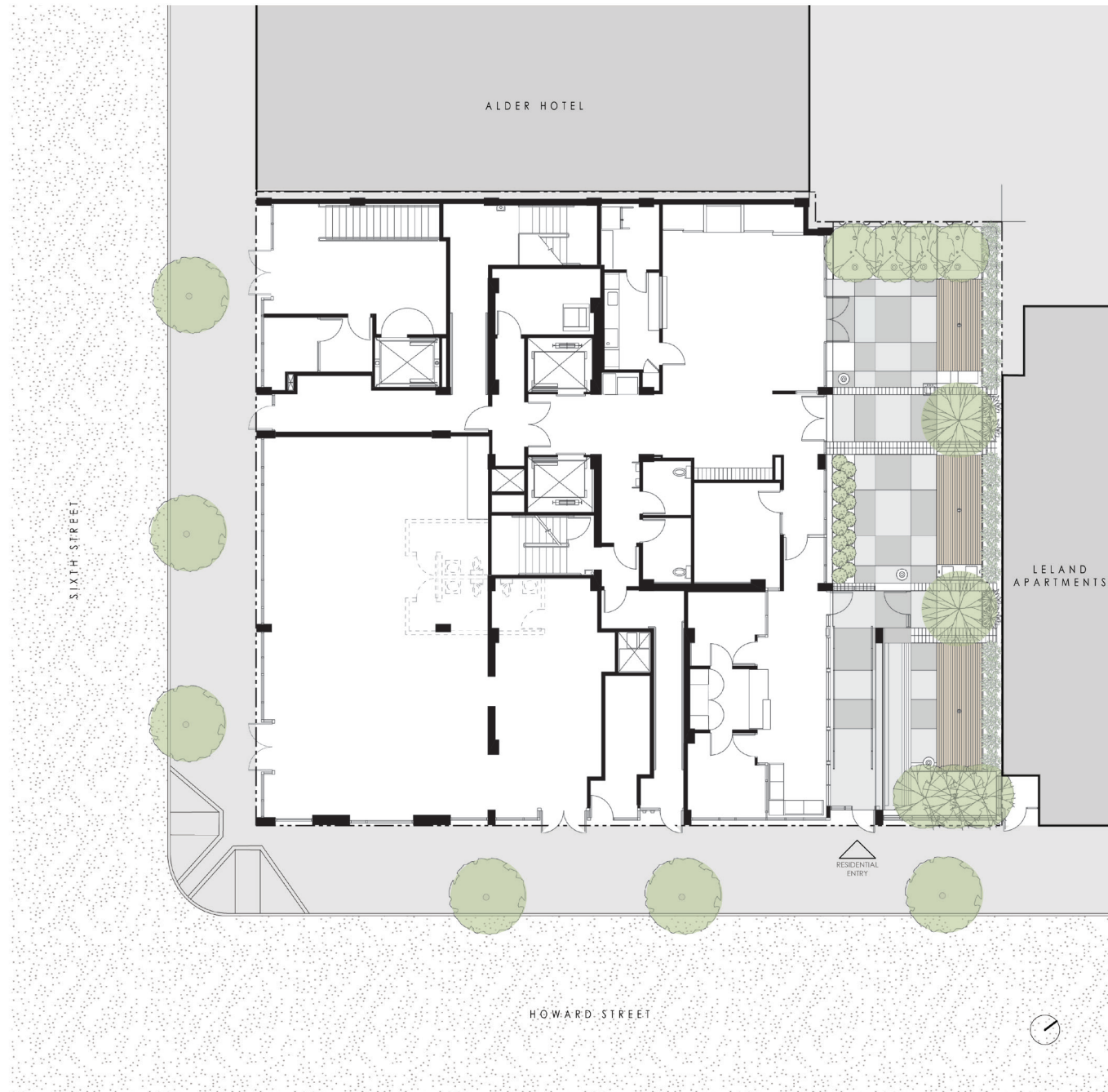
Sustainability

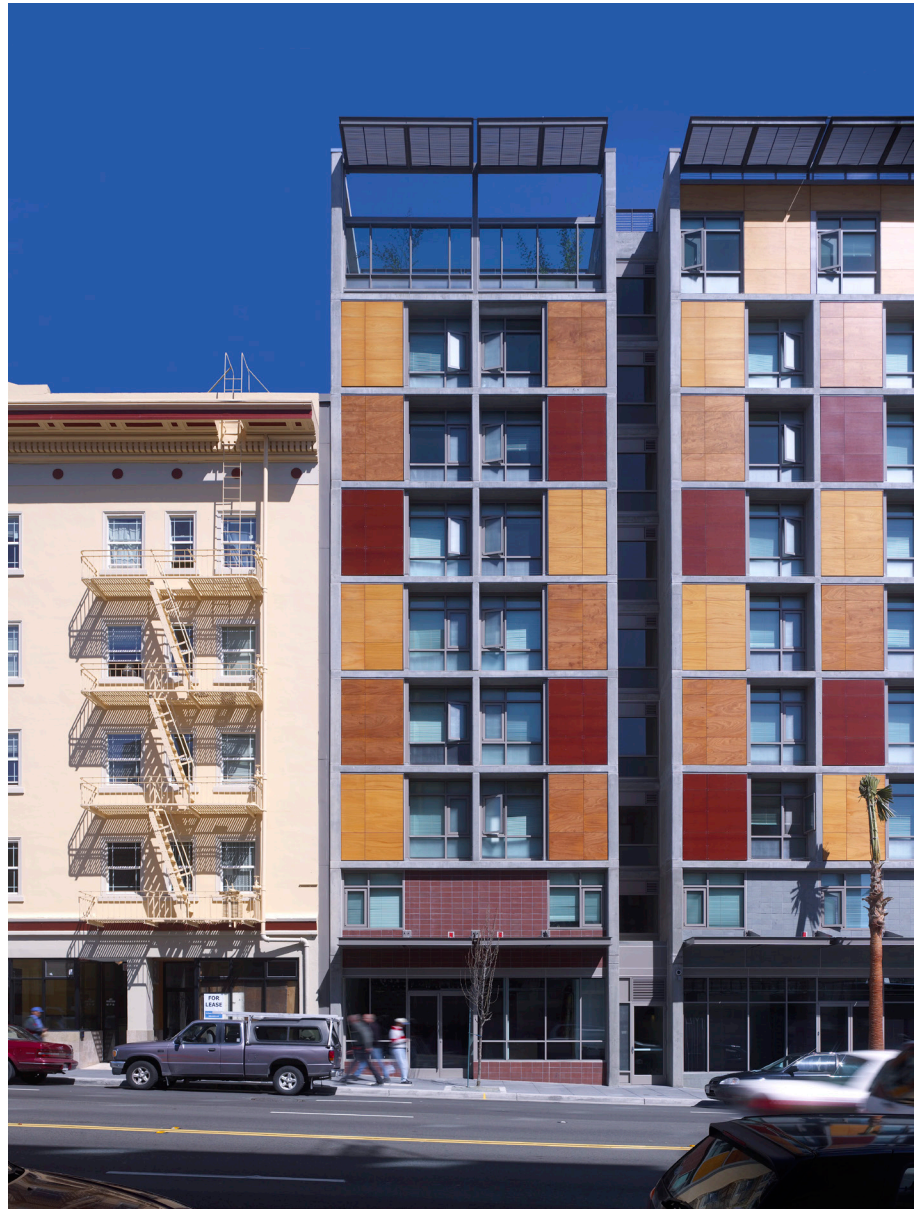
- LEED Silver (one of the first certified affordable housing sites in SF)

Architect

- Paulett Taggart Architects/
Leddy Maytum Stacy Architects







Mission Bay 6 West

Client

- Mercy Housing

Type

- Affordable family housing
- Child Development Center
- Blue Bear School of Music

Density

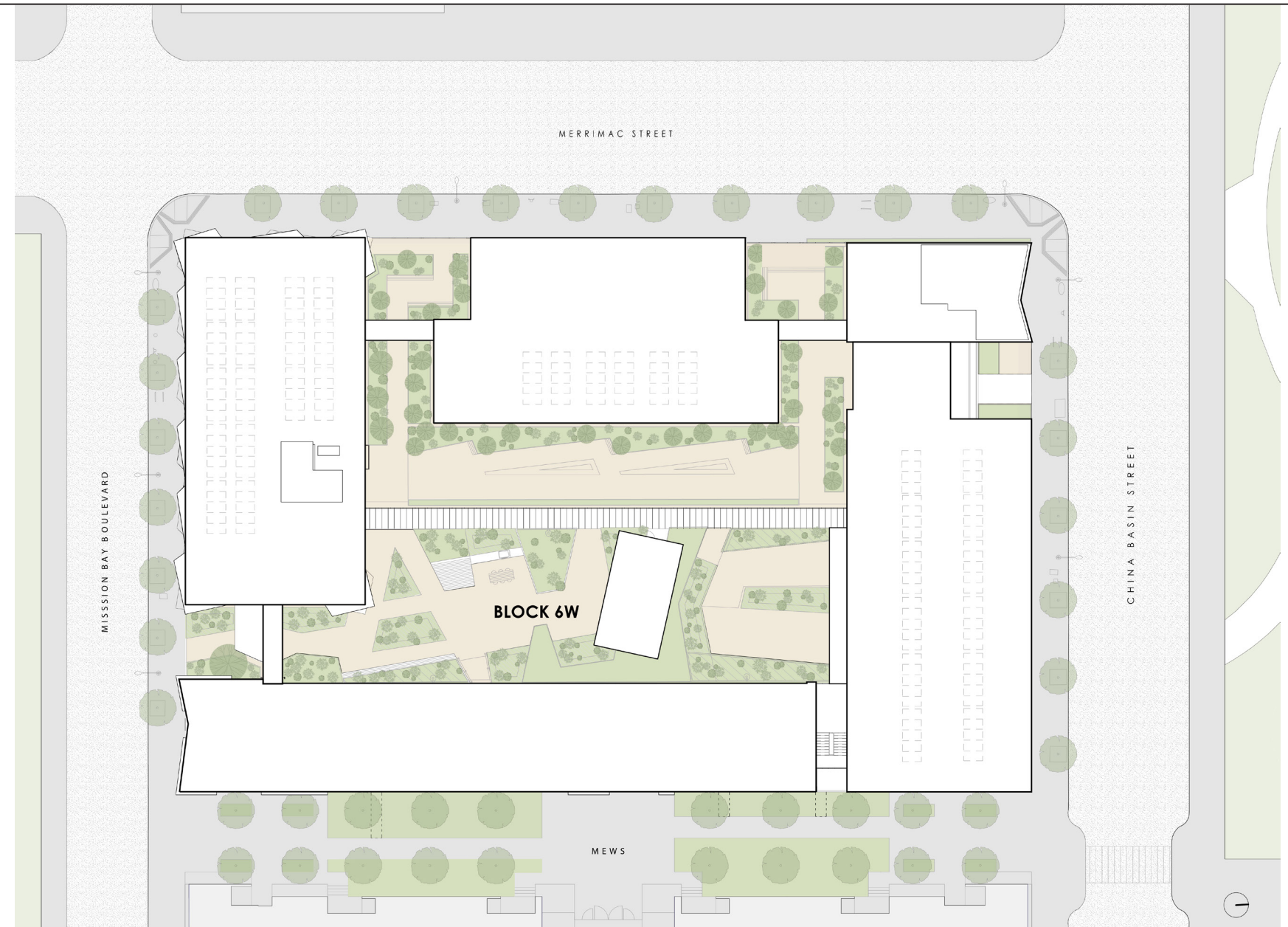
- 152 units (132 du/acre)

Sustainability

- Goal: GreenPoint Rated Platinum

Architect

- Paulett Taggart Architects with
Assoc. Arch Studio Vara





RADs

Rental Assistance Demonstration Program

Client

- 1880 Pine: Mercy Housing
- 939/951 Eddy: TNDC

Ownership

- SFHA (public) ownership of land continues
- 99 year ground lease to developer

Type

- Senior affordable

Density

- 1880 Pine: 100 units
- 939/955 Eddy: 60 units

Architect

- Paulett Taggart Architects



Hunters View

Client

- John Stewart Company, lead developer

Ownership

- Old: Public ownership
- New: Private ownership of buildings

Type: Sitewide

- Affordable at various income levels
- Market rate

Density

- Old: 250 units (15 du/acre)
- New: 750 units (45 du/acre)

Sustainability

- LEED for Neighborhood Design - pilot

Architects

- Masterplan and Block 4: Mithun
- Blocks 5+6: Paulett Taggart Architects
- Blocks 7+11, 10: PTA/DBA jv
- Blocks 14+17: David Baker Architects





Former housing at Hunters View



PHASE 1

PHASE 2

PHASE 3



Hunters View 5+6

Type

- Affordable housing at very low/moderately low incomes

Density

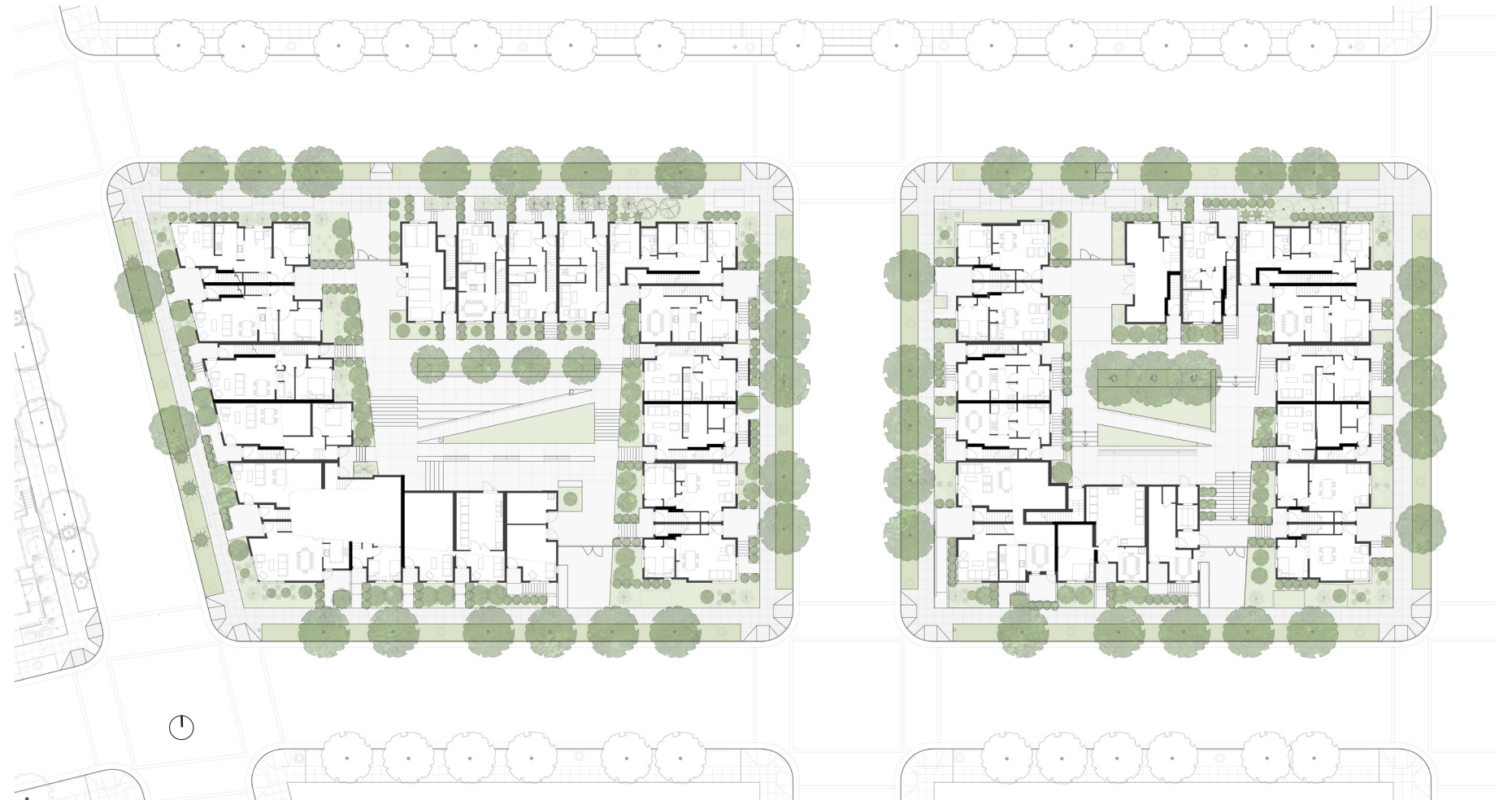
- 52 units (50 du/acre)

Sustainability

- GreenPoint Rated 150 points

Architect

- Paulett Taggart Architects







Hunters View 10

Type

- Affordable housing: very low/moderately low incomes
- Community Center
- Child Development Center

Density

- 72 units (60 du/acre)

Sustainability

- LEED GOLD

Architect

- Paulett Taggart Architects/
David Baker Architects JV

