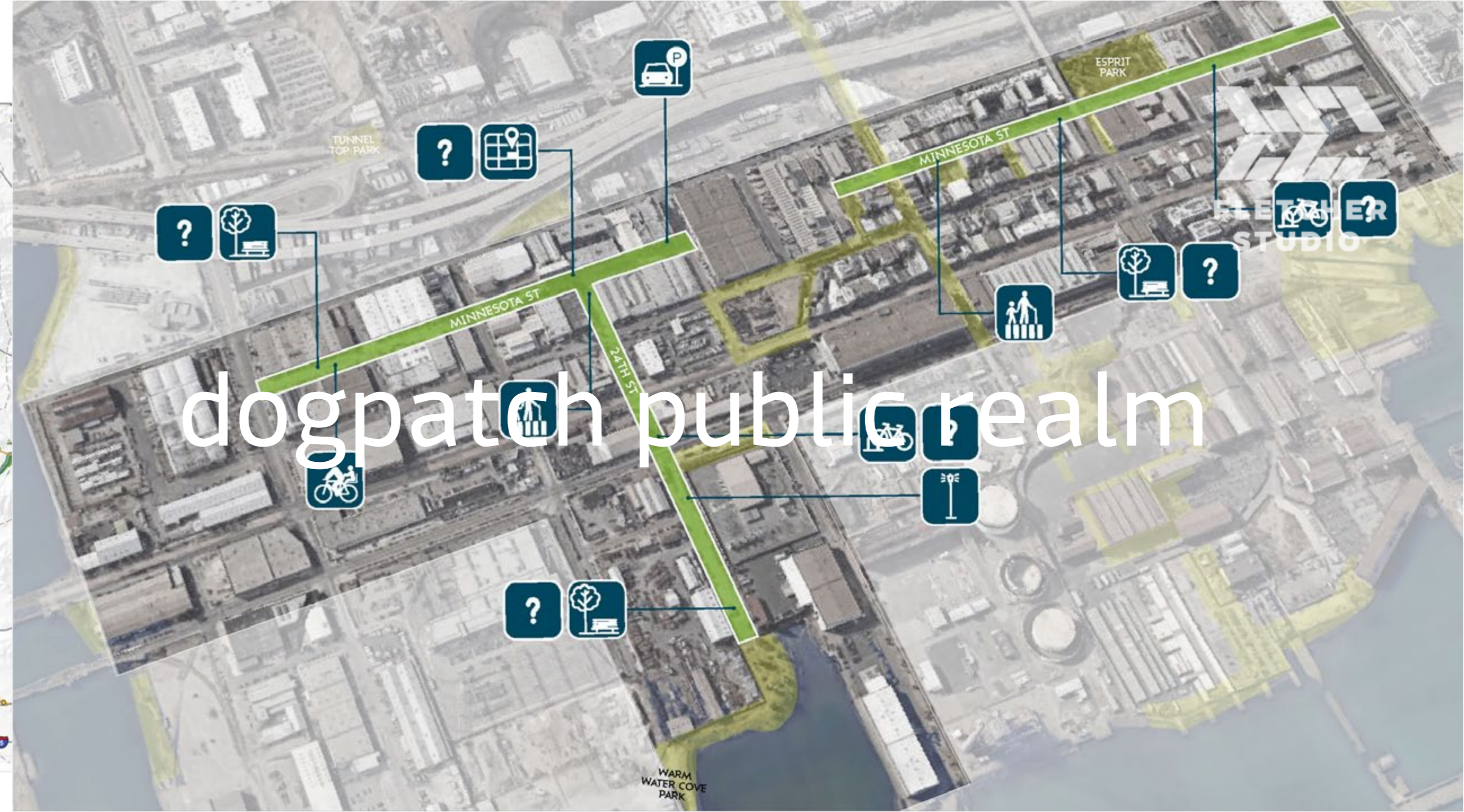


los angeles river mp



dogpatch public realm



22nd st mp



compton creek mp



south park



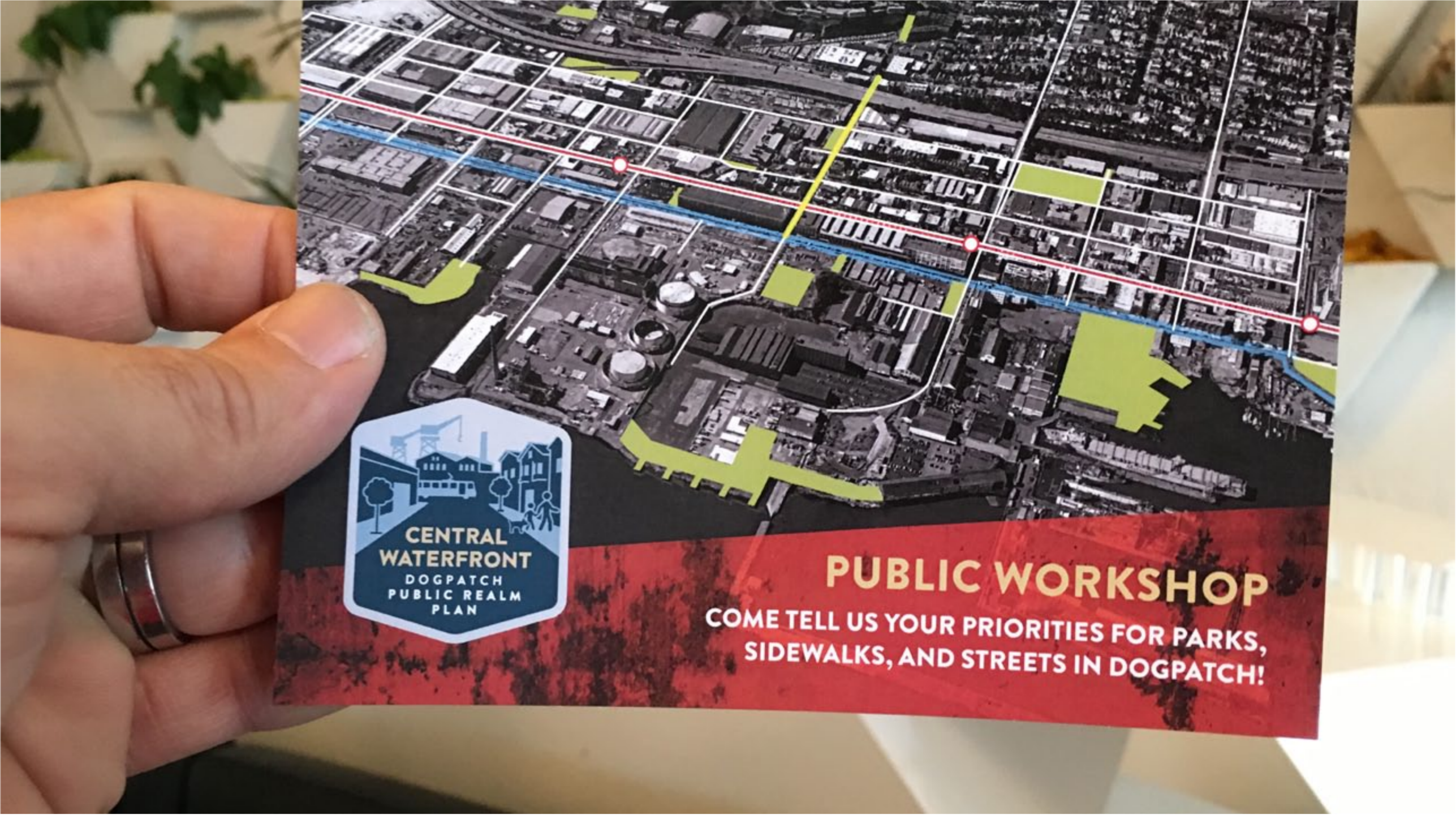
townsend passage

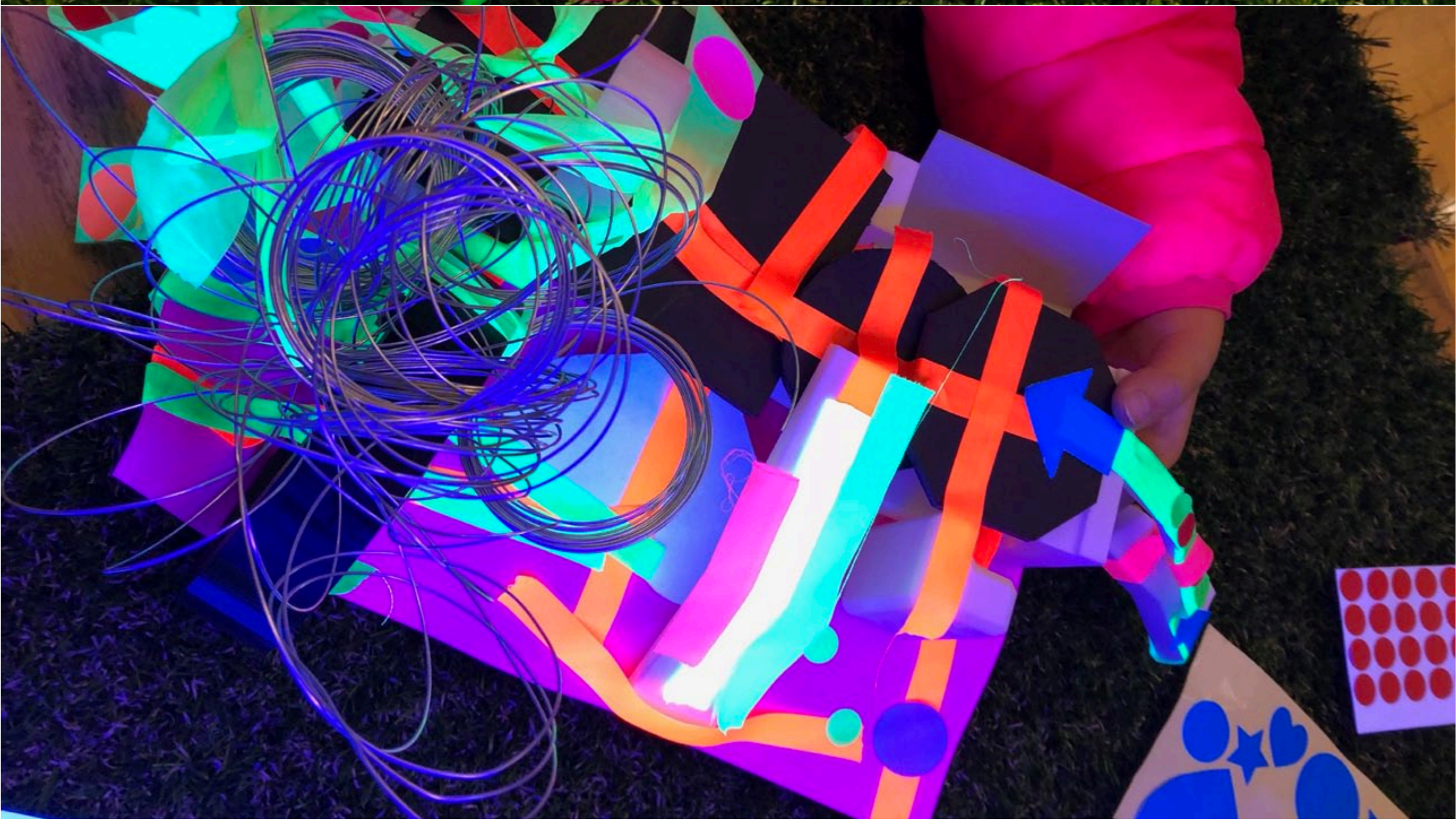


dogpatch ropewalk



bowie pocket park

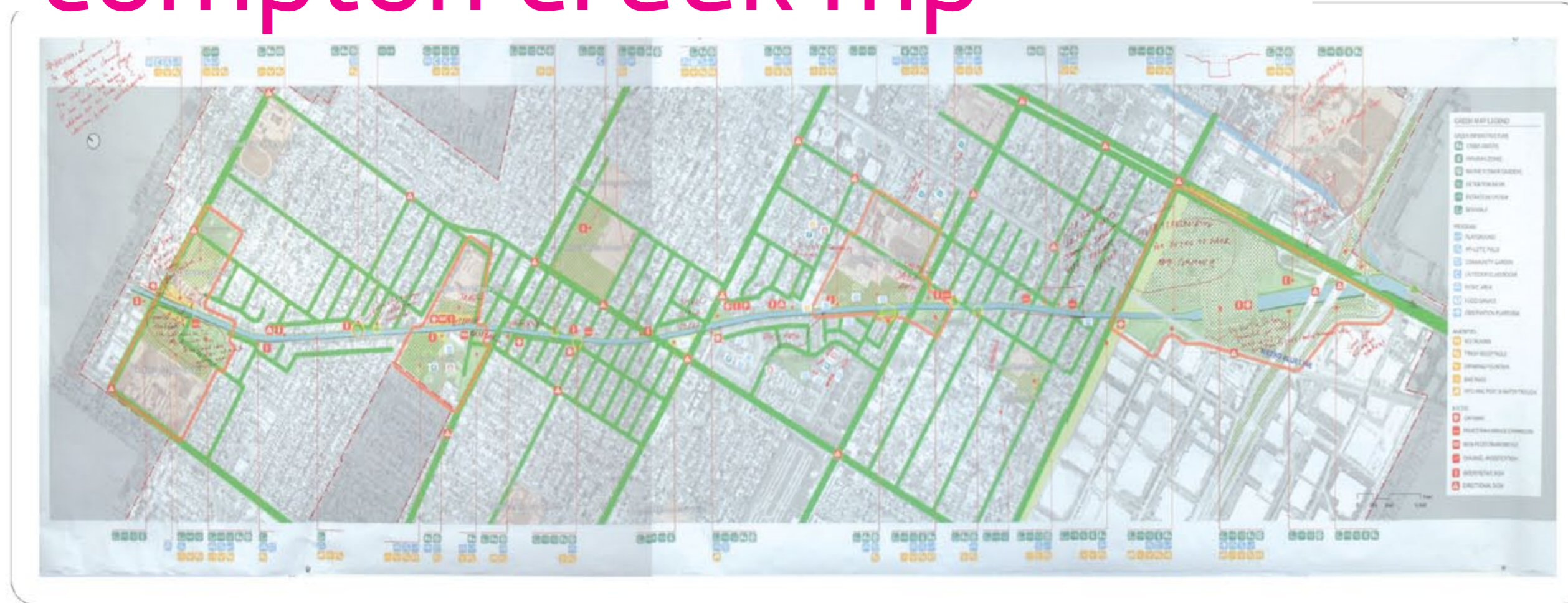




COMMUNITY WORKSHOP 2
 22 APRIL 2006
 WALTER R. TUCKER PARK



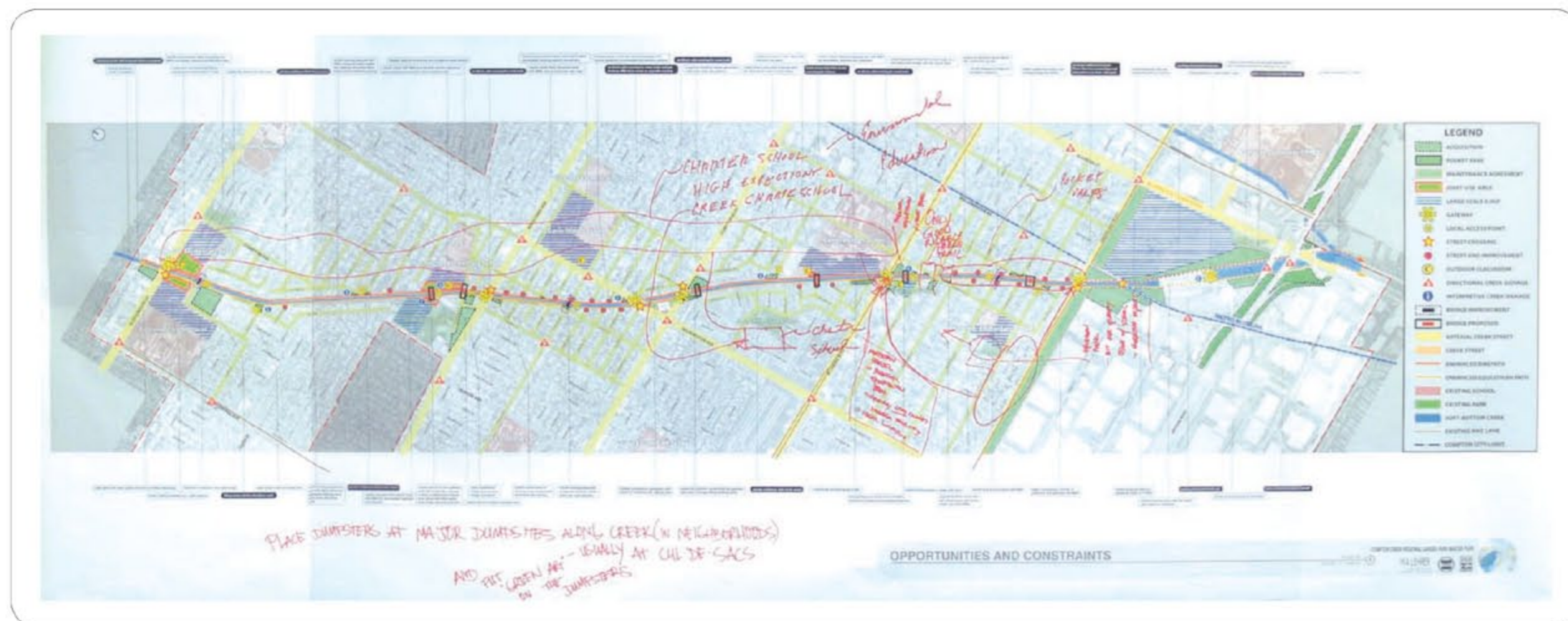
compton creek mp



GREEN MAP LEGEND

GREEN INFRASTRUCTURE			
CREEK GROVES	Plant native trees to shade & beautify Parkway	RESTROOMS	Construct restroom facilities at Creek adjacent parks & other high-traffic areas along Parkway
RIVER PLANTING	Establish ecotone zones which support wildlife & provide natural filtration of rainwater runoff	TRASH RECEPTACLE	Install trash receptacles along Parkway to encourage public to maintain Creek and discourage littering
NATIVE FLOWER GARDENS	Beautify Parkway with frequent, colorful flower beds	DRINKING FOUNTAIN	Install drinking fountains at parks and key locations along bike path and pedestrian trail
DETENTION BASIN	Best Management Practice: construct basins in existing open fields & parking lots to regulate and control rainwater runoff	BIKE RACK	Install bike racks at parks and key locations along bike path
FILTRATION SYSTEM	Best Management Practice: construct filtration systems in existing open fields & parking lots to filter out debris from rainwater runoff	HITCHING POST & WATER TROUGH	Install hitching posts & watering troughs at parks & key locations along equine trail
BIOSWALE	Best Management Practice: construct bioswales composed of retention & natural filtration systems to moderate rainwater runoff	ACCESS	
GREEN STREET	Retrofit existing road into permeable green street to reduce amount of rainwater runoff flowing into Creek	GATEWAY	Formal access point at arterial street. Amenities include ornamental pots, signage, fountains, & lighting
PROGRAM		PEDESTRIAN BRIDGE EXPANSION	Rebuild & beautify existing pedestrian bridge with new sculptural art and vegetation
PLAYGROUND	Install ADA-accessible playground equipment for all ages	NEW PEDESTRIAN BRIDGE	Construct new pedestrian bridge over Creek in order to link neighborhoods to new parks and pathways
ATHLETIC FIELD	Construct fields & courts for basketball, tennis, soccer, baseball, volleyball & other sports	CHANNEL MODIFICATION	Reconfigure creek channel to accommodate new access points, plantings, and stormwater modulation strategies
COMMUNITY GARDEN	Establish parcels for gardens designed and maintained by local neighborhood groups	INTERPRETIVE SIGN	Install signage describing watershed ecology and history of Compton Creek and surrounding neighborhoods
OUTDOOR CLASSROOM	Design interactive laboratories used by local schools & recreation centers illustrating Creek watershed ecology and processes	DIRECTIONAL SIGN	Install signage of major arterial intersections directing community toward the Creek
PICNIC AREA	Install picnic areas with tables & benches for outdoor gatherings	SECURITY	Install lighting surveillance cameras and other security features
OBSERVATION PLATFORM	Construct decks & walkways highlighting important areas of Creek		

Participants were given stickers that represented different possibilities along the creek.



GREEN INFRASTRUCTURE MAP

dogpatch public realm

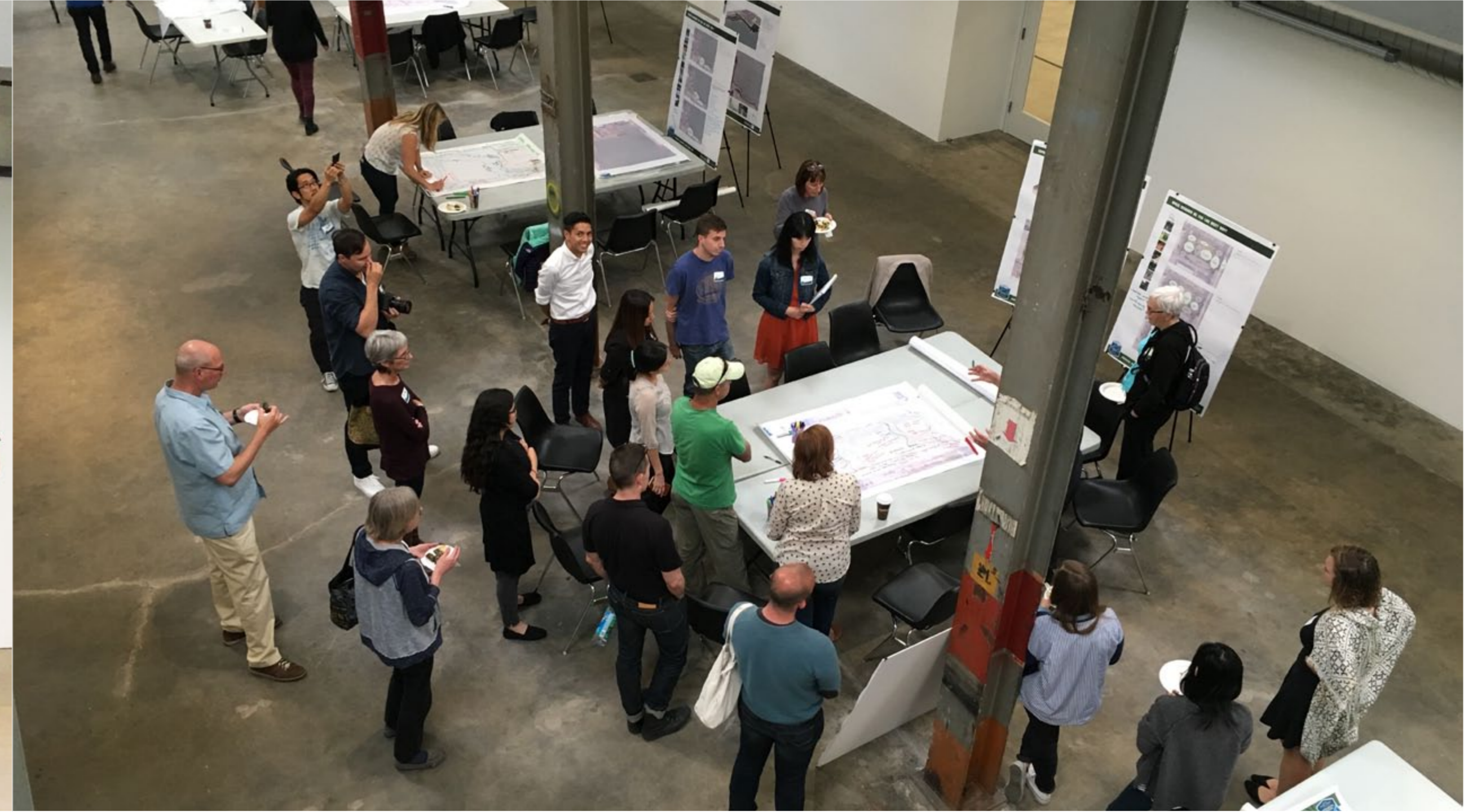
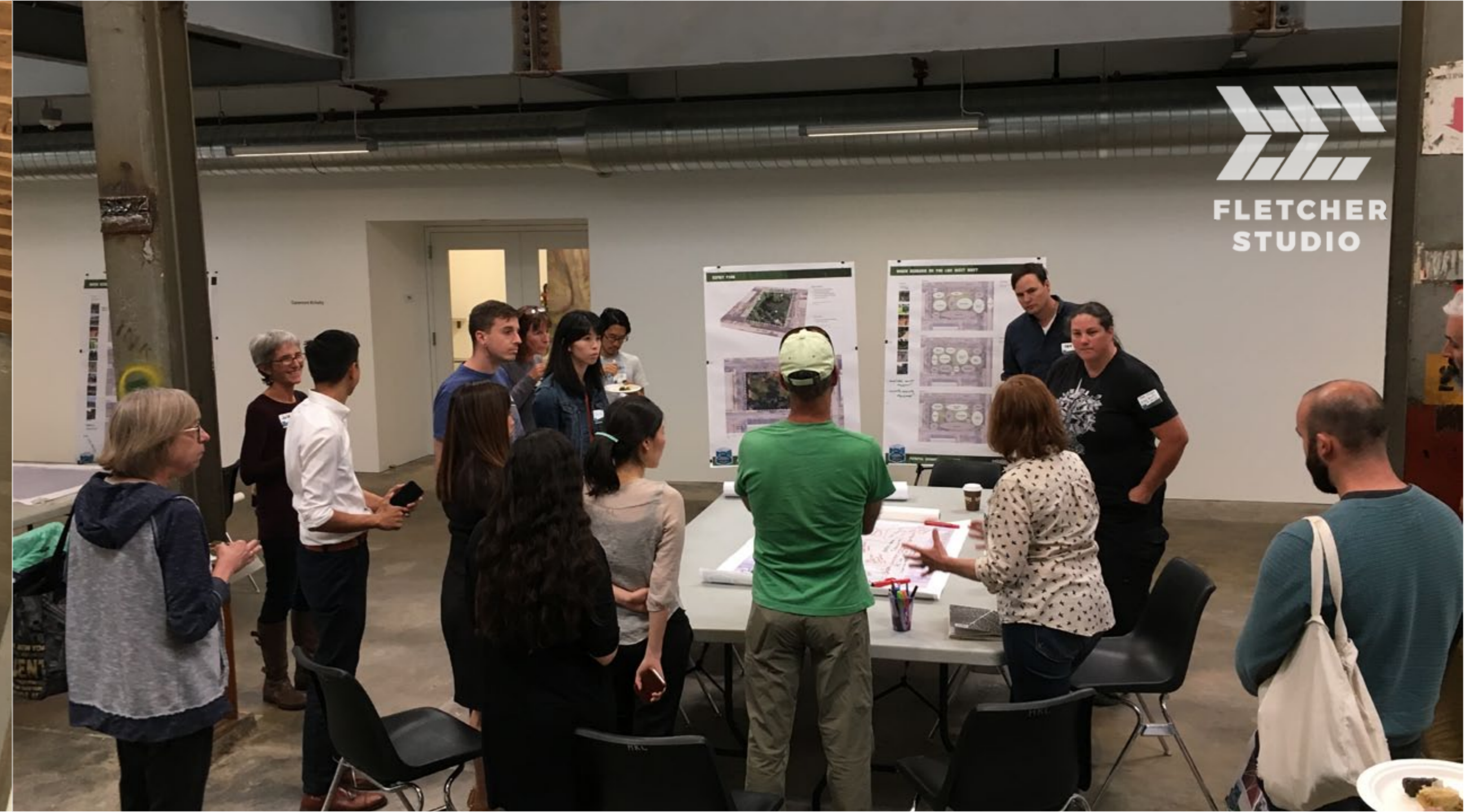
PUBLIC WORKSHOP
COME INFORM PROGRAMMING AND DESIGN FOR ESPRIT PARK!

OPEN HOUSE
COME GIVE YOUR FEEDBACK ON PROPOSALS FOR

RELEASE OF DRAFT PLAN
COME LEARN MORE ABOUT IMPROVEMENTS THAT WILL BE COME THROUGH THE PUBLIC REALM PLAN!

PUBLIC WORKSHOP
JOIN THE CHARRETTE FOR LONG-TERM STREETScape DESIGN IN DOGPATCH!







22nd street mp



FLETCHER STUDIO





jackson park



FLETCHER
STUDIO

ART
WALL



Jackson Park Masterplan

What do you think about the proposed park improvements?

PROPOSED PLAN

Field Perimeter Improvements

Carolina-Side Improvements

CLUBHOUSE PLAZA

PROMENADE

DESIGN STRATEGIES

LAYER

GATHER

ACTIVATE

SHIFT

KEY

Other suggestions? Write them here:



Active Sports and Play

What do you think about the proposed fields, courts and play area improvements?

A Bigger Play Area

B More Spectator Seating

C Improved Field Amenities

D New Field Fencing and Additional Entry Points

KEY

Other suggestions? Write them here:

Active Sports and Play

DIAGRAMS

Existing Field Location

Proposed Field Location

Perimeter Amenities

Basketball Court - Level 1

Tennis Court - Level 2

Tennis Court - Level 2

PLAY AREA

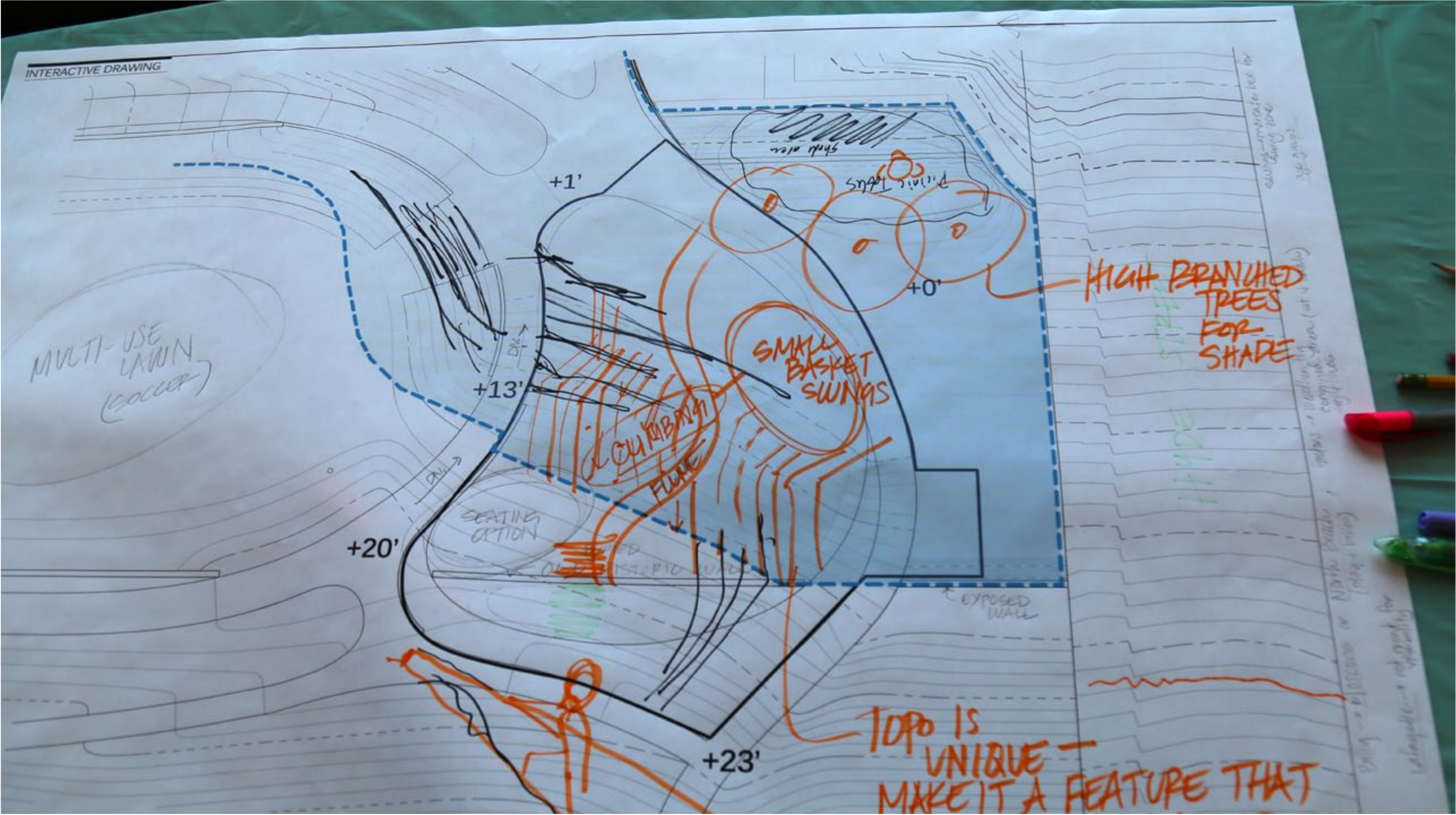
ENNIS COURT

BALL FIELDS

FIELD ACCESS POINTS

MAINTENANCE ACCESS

FIELD ACCESS VIA DUGOUT



COMPONENTS

TOWER

COL1

FRUIT1

FLUME

POOL

COL

FEEDBACK:
seems like this could be incongruous w/ view, waterline?
I like the super long slide +1!

Swings for older kids seems a need.

FEEDBACK:
love this idea, but need to ensure safety for smaller kids - agree
I really like the long slide made of rock
big slides for all ages!

slide are there materials that don't allow rubber soled shoes to stick?

FEEDBACK:



