

# CALIFORNIA HIGH- SPEED RAIL PROGRAM UPDATE

October 9, 2018

SPUR, San Jose, CA



# MEETING

**AGENDA**  
Introductions  
&  
Agenda  
Review

Statewide  
Update

San Francisco  
to San Jose  
Project  
Overview

San Jose  
to Merced  
Project  
Overview

Recent &  
Upcoming  
Outreach  
Activities

Introductions

Statewide Update

San Francisco to San  
Jose

San Jose to Merced

Outreach

# STATEWIDE UPDATE



# CONNECTING CALIFORNIA



**INCREASE  
MOBILITY**



**BETTER  
AIR  
QUALITY  
JOB  
GROWTH**



**NEEDED  
ALTERNATIVE**



Introduction

Statewide Update

San Francisco to San  
Jose

San Jose to Merced

Outreach

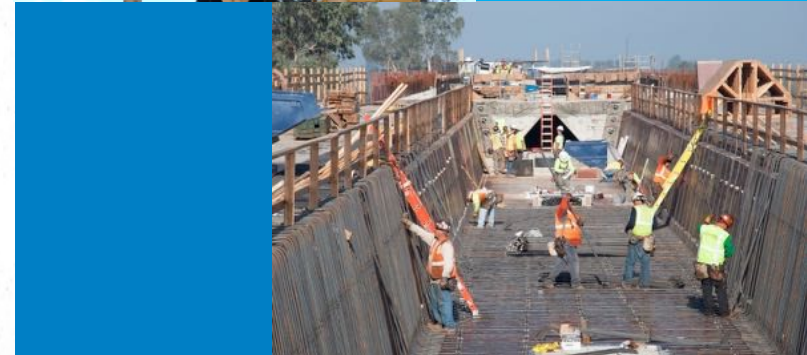
# STATEWIDE CONNECTIVITY

- Ties economies together
  - San Jose to Fresno = **60 min**
  - Bakersfield to Los Angeles = **60 min**
  - San Francisco to Los Angeles = **under 3 hrs**
- Connects with and reinforces local mobility
- Foundation for sustainable growth
- Opportunities for revitalization in downtown cores



# CONSTRUCTION UPDATE

- **119 miles** under construction
  - Madera to north of Bakersfield
- Over **\$10 billion** total investment
- **21** active construction sites
- Over **2,200** craft laborers
- **100%** of steel/concrete is recycled



Introduction

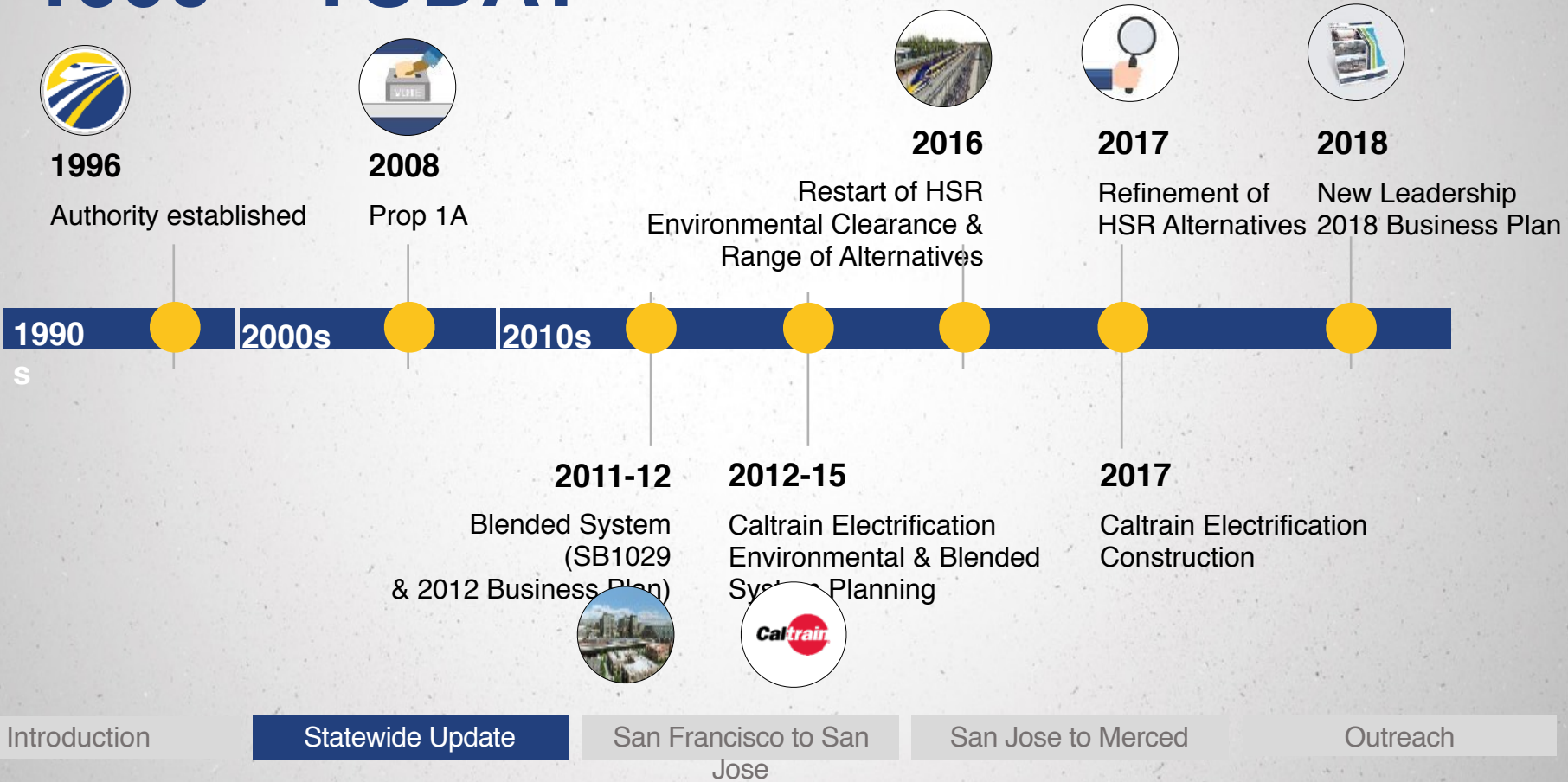
Statewide Update

San Francisco to San  
Jose

San Jose to Merced

Outreach

# WHAT HAPPENED 1990 – TODAY



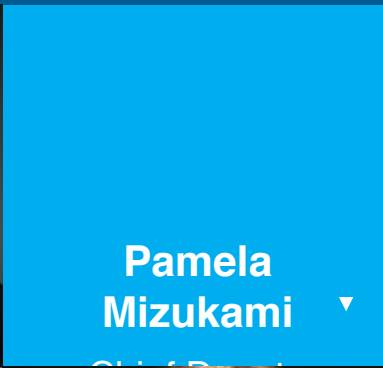
# NEW LEADERSHIP

Executive Leadership Appointments

Northern California Team Leadership



**Brian P. Kelly**  
Chief Executive  
Officer



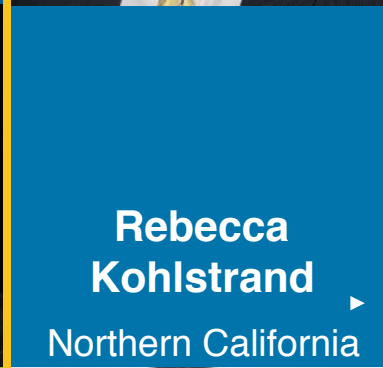
**Pamela  
Mizukami** ▾



**Joseph Hedges**  
Chief Operating  
Officer



**Boris Lipkin**  
Northern California  
Regional Director



**Rebecca  
Kohlstrand** ▶  
Northern California  
Director of Projects



**James Tung**  
San Francisco to  
San Jose Project  
Section Project  
Manager





# 2018 BUSINESS PLAN

## Principles of the Business Plan

Plan shaped by public comment

- Program’s status at this point in time
- Our approach to implementing the system

## Key Authority Goals

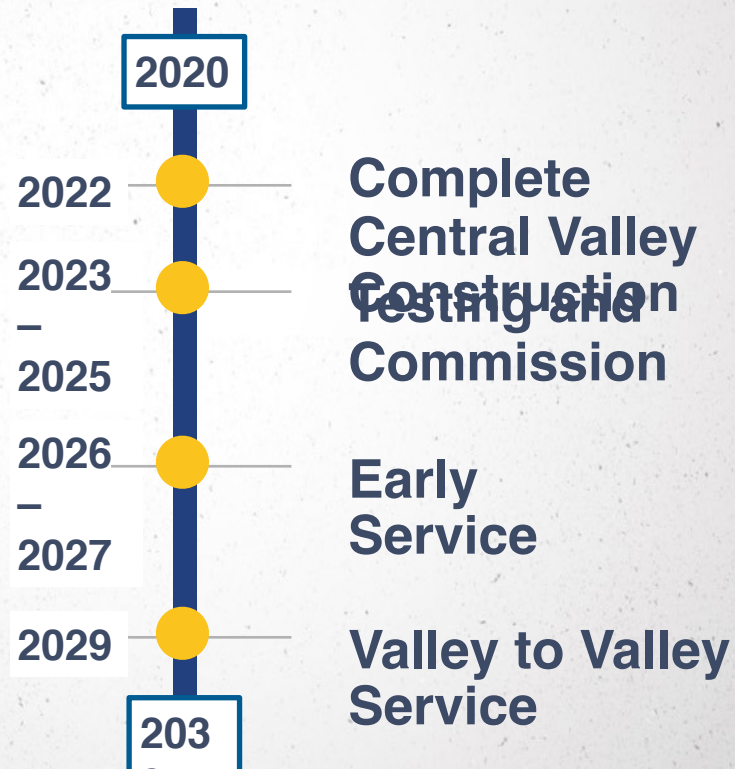
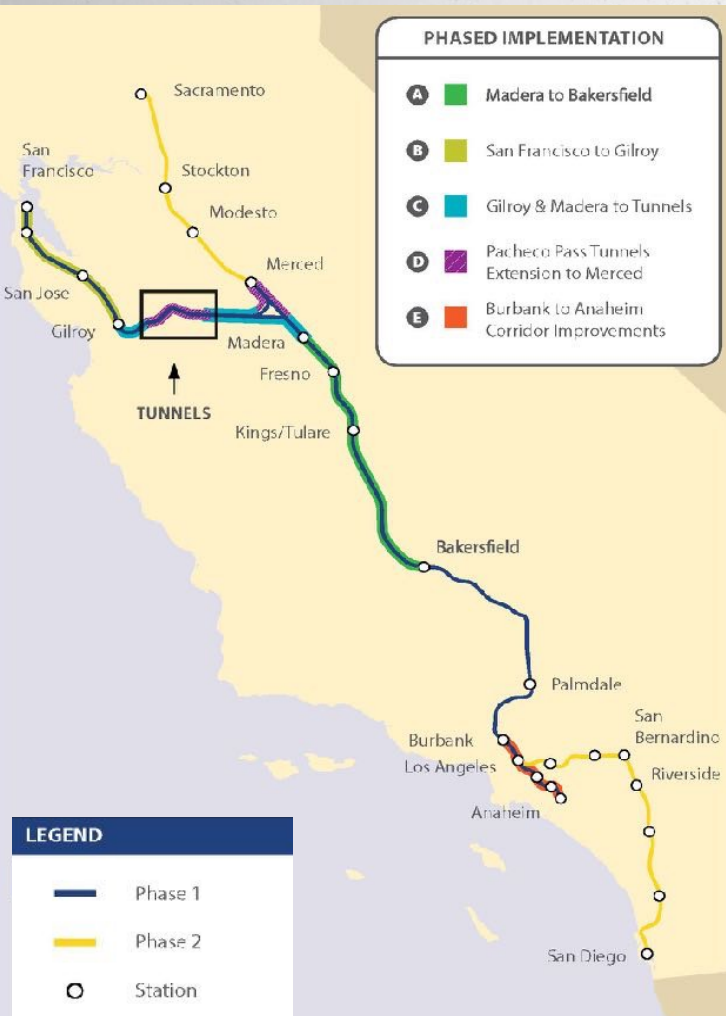
- Initiate service as soon as possible
- Strategic and concurrent investments linked over time and provide mobility, economic and environmental benefits
- Positioned to construct segments as



Introduction	<b>Statewide Update</b> becomes available	San Francisco to San Jose	San Jose to Merced	Outreach
--------------	--	---------------------------	--------------------	----------

# 2018 BUSINESS PLAN

## Plan for Delivery of Service



Introduction

Statewide Update

San Francisco to San Jose

San Jose to Merced

Outreach

# BAY AREA PROGRESS

**Caltrain  
Electrification**



**Introduction of  
High-Speed Rail**



**Diridon Integrated  
Station Concept**



**Caltrain  
Business  
Plan**



**BART  
Extension  
to San Jose**



**Transbay  
Terminal**



Introduction

Statewide Update

San Francisco to San  
Jose

San Jose to Merced

Outreach

# BAY AREA PROGRESS

**Caltrain  
Electrification**



**Introduction of  
High-Speed Rail**



**Diridon Integrated  
Station Concept**



**Caltrain  
Business  
Plan**



**BART  
Extension  
to San Jose**



**Transbay  
Terminal**

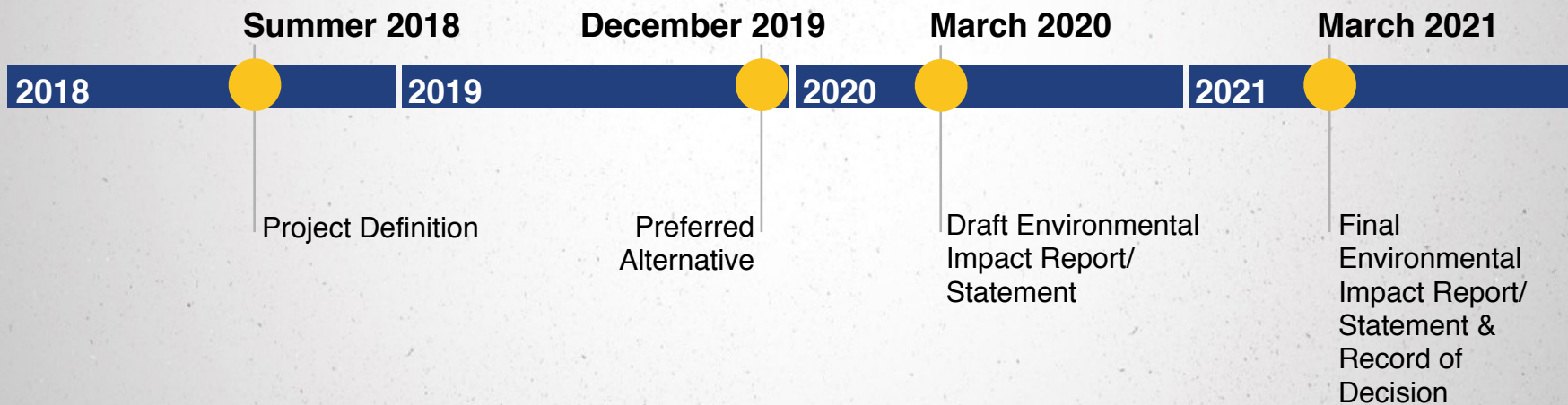


# SAN FRANCISCO TO SAN JOSE PROJECT SECTION





# SAN FRANCISCO TO SAN JOSE ENVIRONMENTAL MILESTONES



Introduction

Statewide Update

San Francisco to San  
Jose

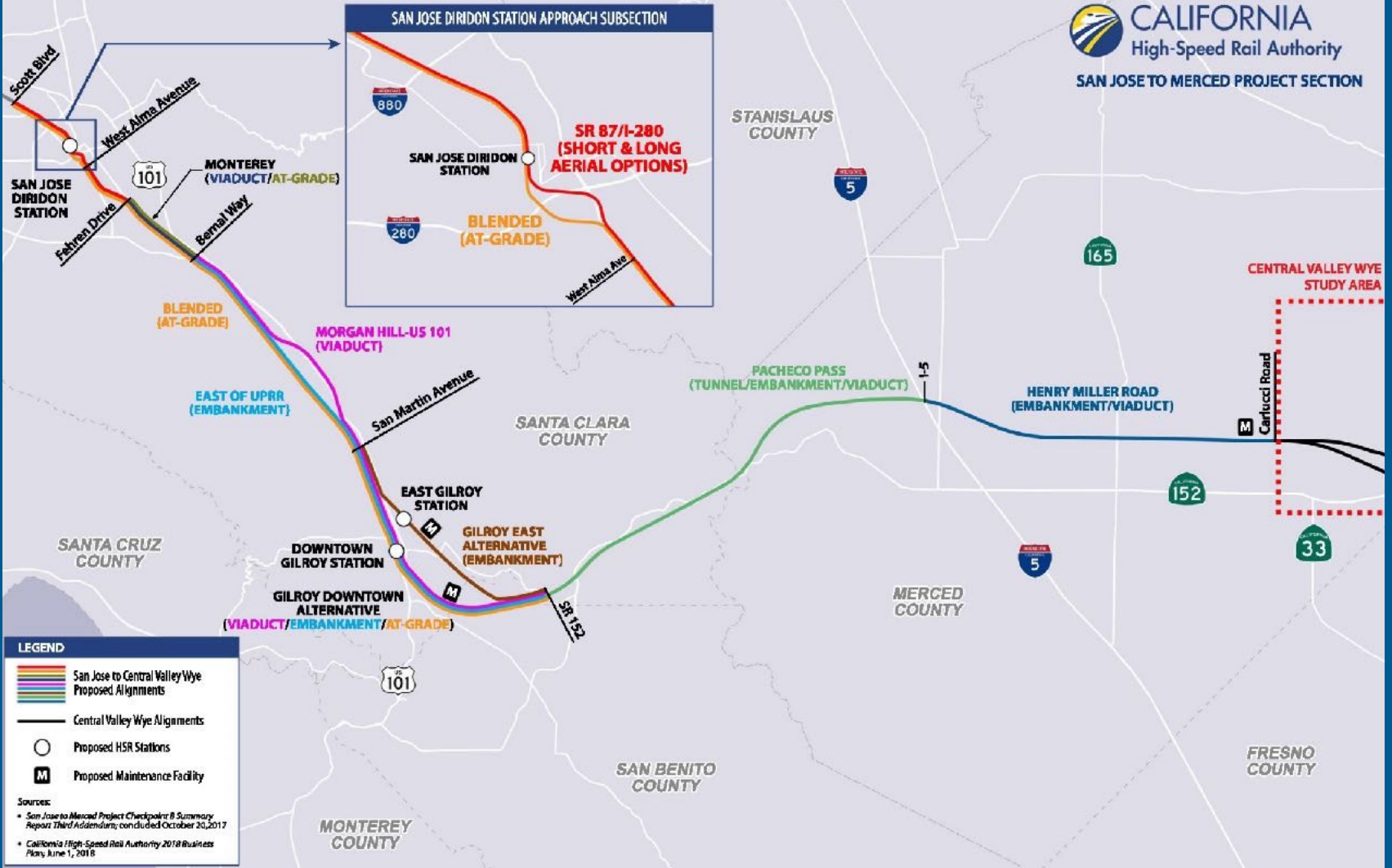
San Jose to Merced

Outreach

# SAN JOSE TO MERCED PROJECT SECTION







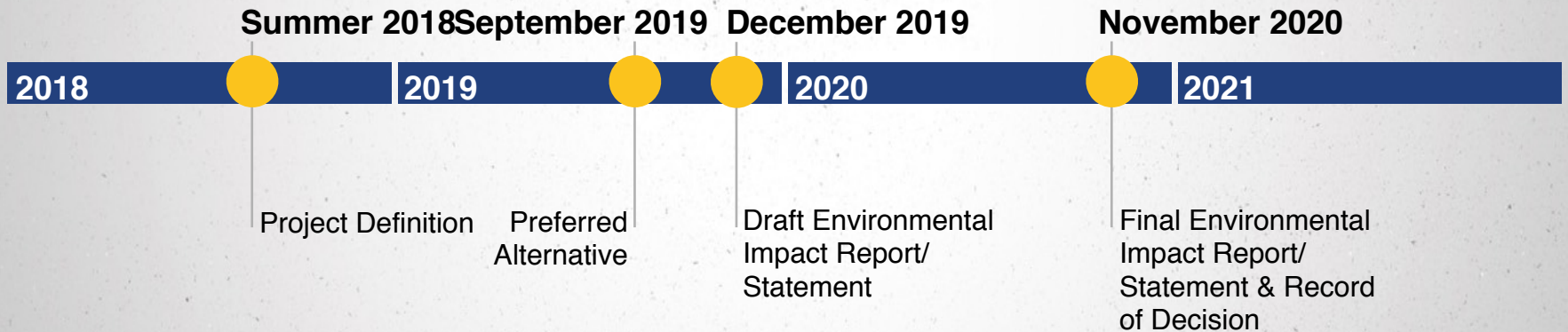
**LEGEND**

- San Jose to Central Valley Wye Proposed Alignments
- Central Valley Wye Alignments
- Proposed HSR Stations
- Proposed Maintenance Facility

**Sources:**

- San Jose to Merced Project Checkpoint B Summary Report Third Addendum; concluded October 20, 2017
- California High-Speed Rail Authority 2018 Business Plan, June 1, 2018

# SAN JOSE TO MERCED ENVIRONMENTAL MILESTONES



Introduction

Statewide Update

San Francisco to San  
Jose

**San Jose to Merced**

Outreach

# CONCURRENT PLANNING PROCESSES

Process	Lead Agency
HSR Environmental Process	 CALIFORNIA High-Speed Rail Authority
Diridon Integrated Station Concept Plan	 CALIFORNIA High-Speed Rail Authority    CITY OF SAN JOSE CAPITAL OF SILICON VALLEY    Caltrain    VTA
Caltrain Business Plan	 Caltrain



# RECENT & UPCOMING OUTREACH ACTIVITIES

# UPCOMING COMMUNITY WORKING GROUPS

**OCTOBER** **NOVEMBER**

**South Peninsula**

October 15 at 6:00 to 8:00 p.m.  
Santa Clara Central Park Library  
City of Santa Clara, CA

**San Mateo County**

October 22 at 6:00 to 8:00 p.m.  
Millbrae Community Center  
Millbrae, CA

**San Francisco**

October 24 at 6:30 to 8:30 p.m.  
SPUR Urban Center  
San Francisco, CA

**Morgan Hill-Gilroy**

November 7 at 6:00 to 8:00 p.m.  
Portuguese Hall  
Gilroy, CA

**San Jose**

November 28 at 6:00 to 8:00 p.m.  
Venue TBD

# HOW TO STAY INVOLVED

**WEBSITE** [www.hsr.ca.gov](http://www.hsr.ca.gov)

**HELPLINE** 1-800-435-8670

**EMAIL**  
[san.francisco\\_san.jose@hsr.ca.gov](mailto:san.francisco_san.jose@hsr.ca.gov)



[instagram.com/cahsra](https://www.instagram.com/cahsra)



[facebook.com/CaliforniaHighSpeedRail](https://www.facebook.com/CaliforniaHighSpeedRail)



[twitter.com/cahsra](https://twitter.com/cahsra)



[youtube.com/user/CAHighSpeedRail](https://www.youtube.com/user/CAHighSpeedRail)



**CALIFORNIA**  
High-Speed Rail Authority

## **HSR SUSTAINABILITY PROGRAM**

**Meg Cederoth, Director of Sustainability**  
**California High-Speed Rail Authority**  
**SPUR, San Jose 9 October 2018**



# HIGH-SPEED RAIL: Key to the State's Future

---

- **High-Speed Rail's Role in Climate Change Mitigation & Adaptation**

*"Build high-speed rail to provide reliable access to urban centers across the state with increased public transit and active transportation opportunities around stations"*

-Safeguarding California Plan 2017 Update

- **Delivery Sets a New, Green Standard for Infrastructure**

*"The Authority will deliver a sustainable high-speed rail system for California that serves as a model for sustainable rail infrastructure. The Authority has developed, and will continue to implement, sustainability practices that inform and affect the planning, siting, designing, construction, mitigation, operation, and maintenance of the high-speed rail system."*

-Authority Sustainability Policy

- **Prop 1A Expressed Californian's Goal for Sustainable Development:**

- » Fostering Mobility and Economic Development without Sacrificing the Environment, or Bequeathing Future Generations With Debt



# POLICY & FRAMEWORK



Energy



Communities & Ridership



Sustainable Infrastructure



Natural Resources



Business & Management



# KEY COMMITMENTS REFLECT STAKEHOLDER PRIORITIES

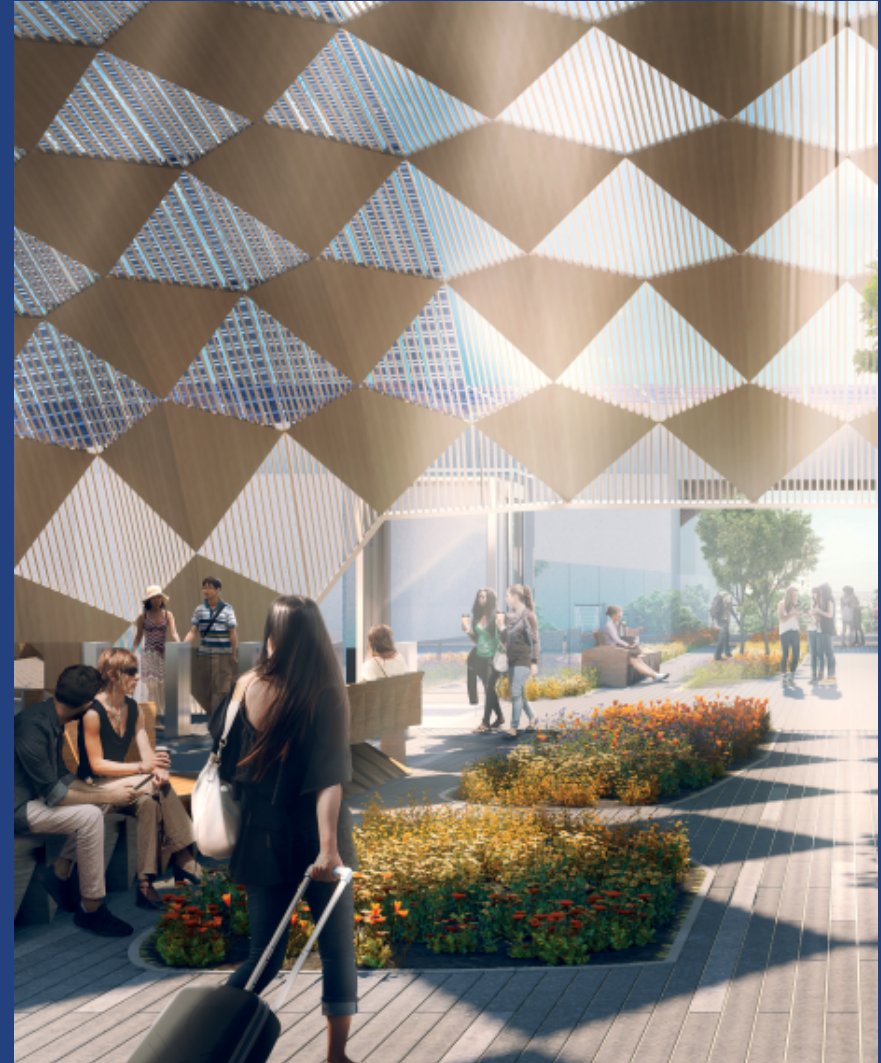
---

- Net-zero Greenhouse Gas and Criteria Pollutant Emissions in Construction
- Operating the System Entirely on Renewable Energy
- Net-Zero Energy, LEED-Platinum Facilities
- Station Area Planning to Catalyze Infill Development
- Planning For Climate Change Adaptation
- Prioritizing Life-Cycle Considerations
- Landscape Scale Habitat Mitigation
- Permanent Conservation Easements

# ENERGY

---

- Operate on clean, renewable energy
- Design zero-net energy facilities
- Explore how storage and other emerging technology benefit the system
- Explore how the station fits into district scale energy management



# COMMUNITIES & RIDERSHIP

---

- Maximize active transportation
- Convenient station access and intuitive interfaces
- Maximize benefits to disadvantaged communities
- Partnerships to achieve infill development
- Maximize local and regional transit connectivity with the system



# SUSTAINABLE INFRASTRUCTURE

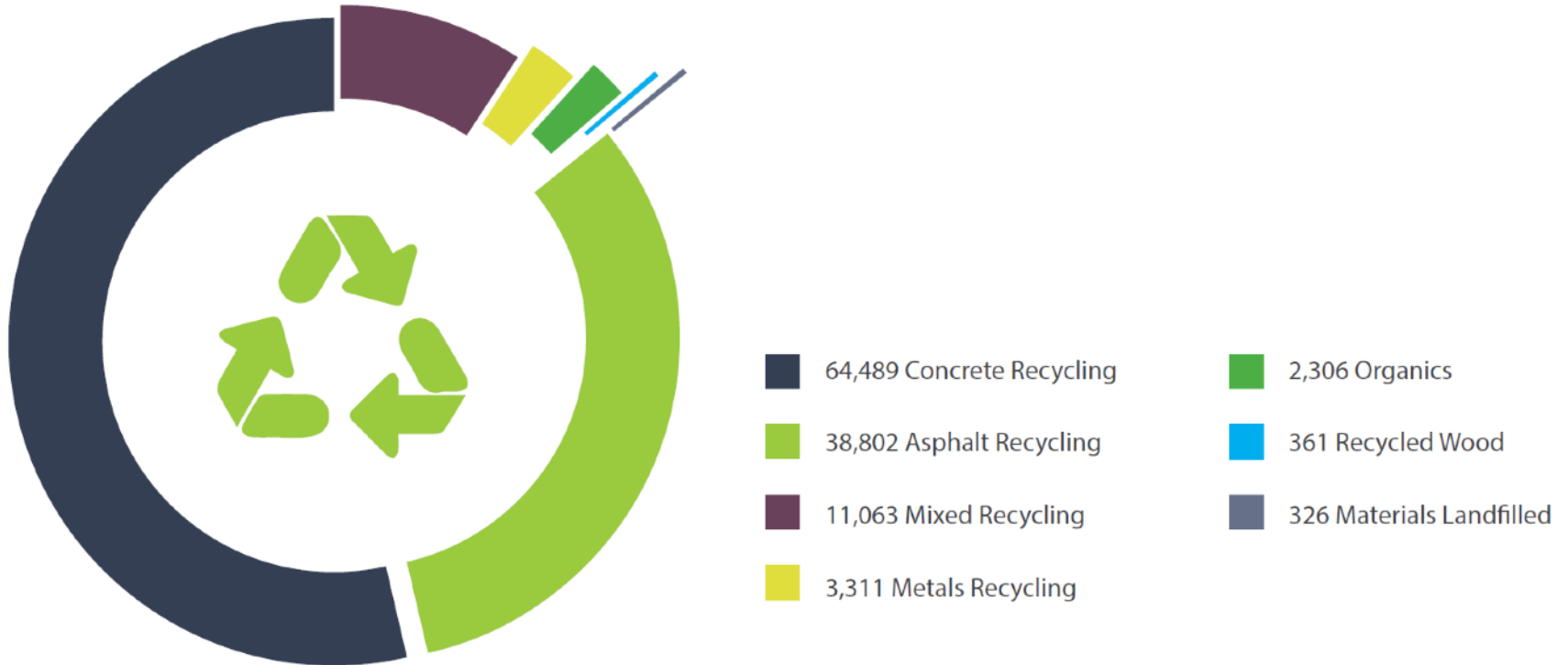
---

- Set a new standard for delivery
- Implement State and Local energy and sustainability policies
- Resilient, Adaptive infrastructure
- Protect employee and customer health



# SET ABSOLUTE TARGETS: RECYCLING

Exhibit 21: 2017 Materials Management (in Tons)



# UNIQUE COMMITMENT: OFFSETTING GHG EMISSIONS

- 452 trees planted to date will:
  - » Offer shade
  - » Improve air quality
  - » Provide recreation benefits in West Fresno
  - » Offset 1,300 tons of GHG over their lifetime
- Partnering with Tree Fresno and California Urban Forestry Coalition on additional planting



# UNDERSTANDING THE SUPPLY CHAIN

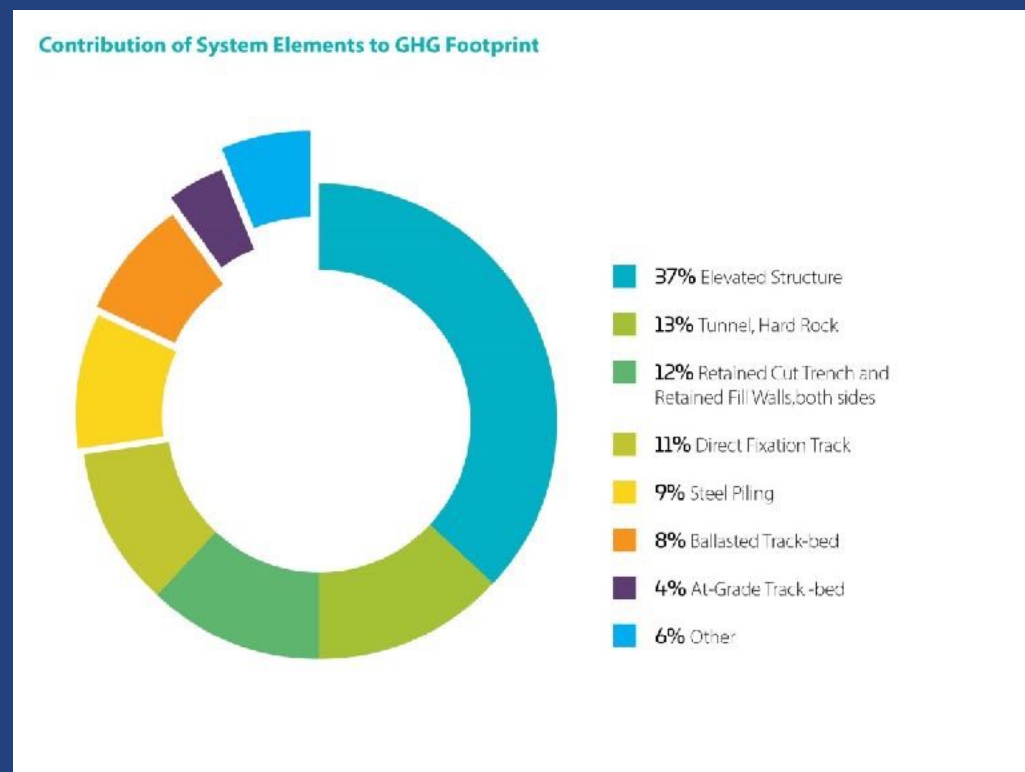
- **Consultation with Industry**

- » Explaining Authority Policy and Intent

- *“The Contractor shall provide Environmental Product Declarations (EPDs) from its suppliers and manufacturers for concrete mix designs used in elements of the project, including pre-cast and cast-in-place concrete, and all steel.”*

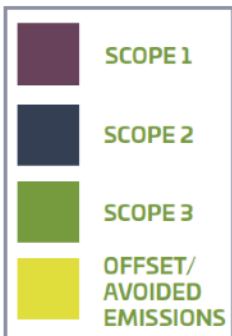
- **Analyzing Materials Installed**

- » Direction from Board in 2016 to Consider Attributes of Materials for the Infrastructure Across their Entire Life-Cycle





# THE WHOLE PICTURE



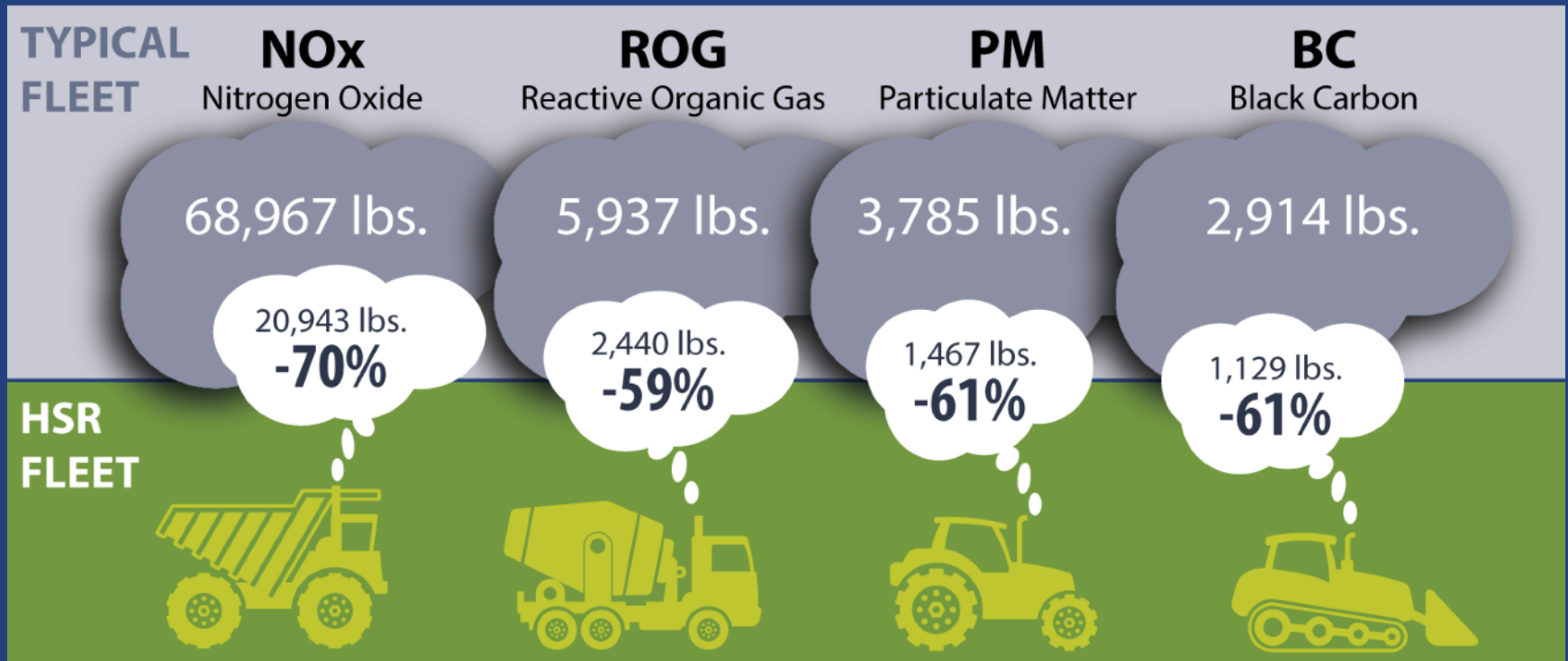
# NATURAL RESOURCES

---

- Achieve zero-net criteria pollutants in construction
- Improve air quality through operations
- Conserve agricultural land
- Deliver habitat conservation at a landscape level
- Restore and maintain ecosystem health
- Reduce the demand for virgin materials



# MINIMIZE EMISSIONS: AIR QUALITY

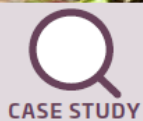


The use of Tier 4 vehicles (or retrofitted vehicles) results in demonstrably cleaner sites

# LEVERAGE PROJECT SCALE: HABITAT

---

- 2,500 acres of habitat preserved and restored
- 1,200 acres of agricultural land approved for conservation
- 273 deeded acres of agricultural land have been secured



HABITAT CONSERVATION IN THE CROSS CREEK CORRIDOR

# BUSINESS & MANAGEMENT

---

## Objectives

- Improve the economic value to Californians from the system
- Achieve a self-sustaining financial structure
- Achieve continual improvement of delivery and management
- Operate and maintain transparently and accountably
- Maximize opportunity for private investment
- Incorporate adaptation considerations into investment decisions

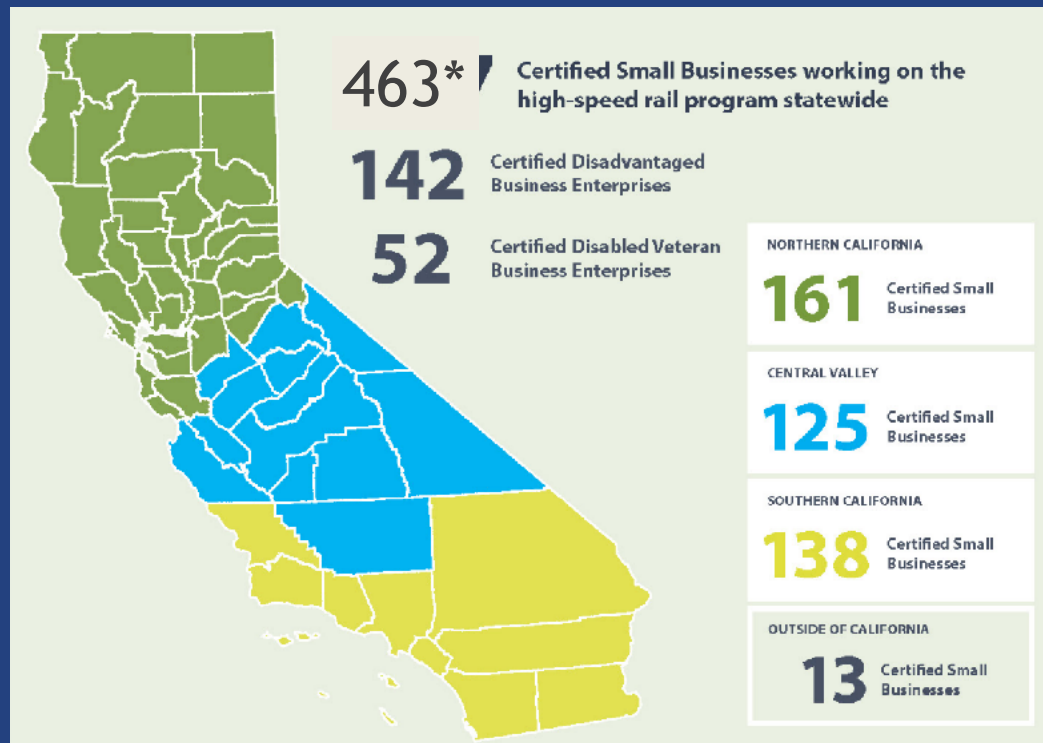
**54%** of total project expenditures occurred in disadvantaged communities throughout California, spurring economic activity in these areas.



# RESULTS: JOBS AND ECONOMIC ACTIVITY

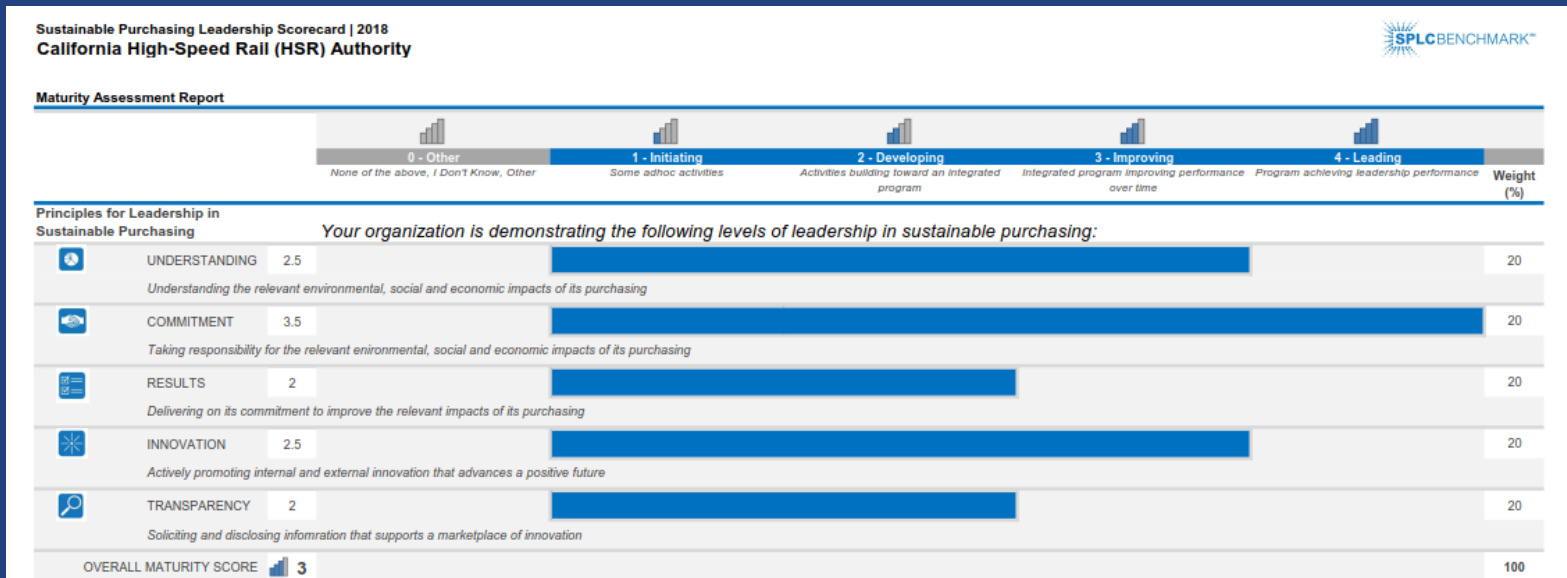
## Providing Benefits Now:

- 45% of workers to date live in disadvantaged communities, more than 1,100
- 115 of 463 small businesses are located in disadvantaged communities



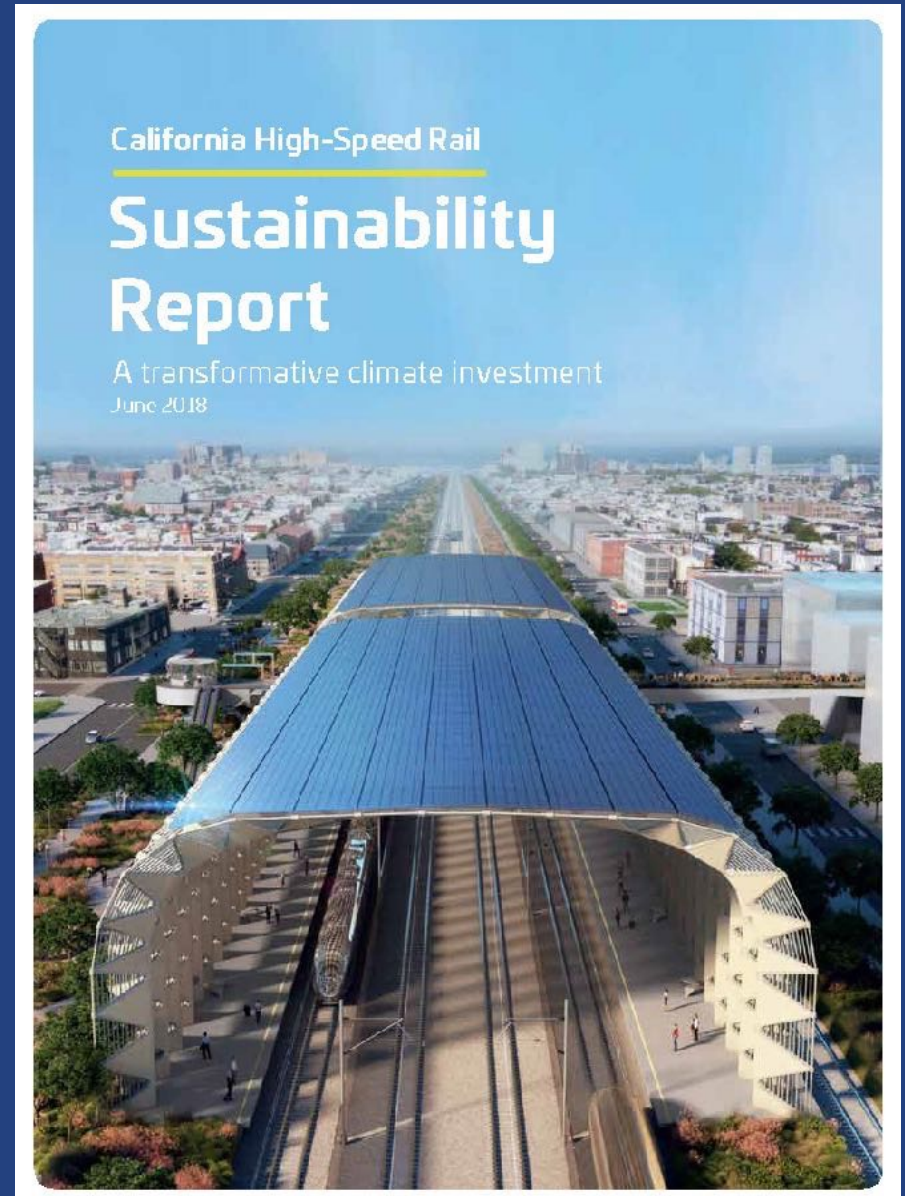
# TRANSPARENCY & BENCHMARKING

- Reviewed data with Air Resources Board
- Completed third response to GRESB Infrastructure Assessment benchmark and request of information from private investors
- Completed third public Global Reporting Initiative report
- Participated in California Cohort and ranked a leader among state agencies delivering sustainable procurement strategies



# JUNE 2018 SUSTAINABILITY REPORT HIGHLIGHTS

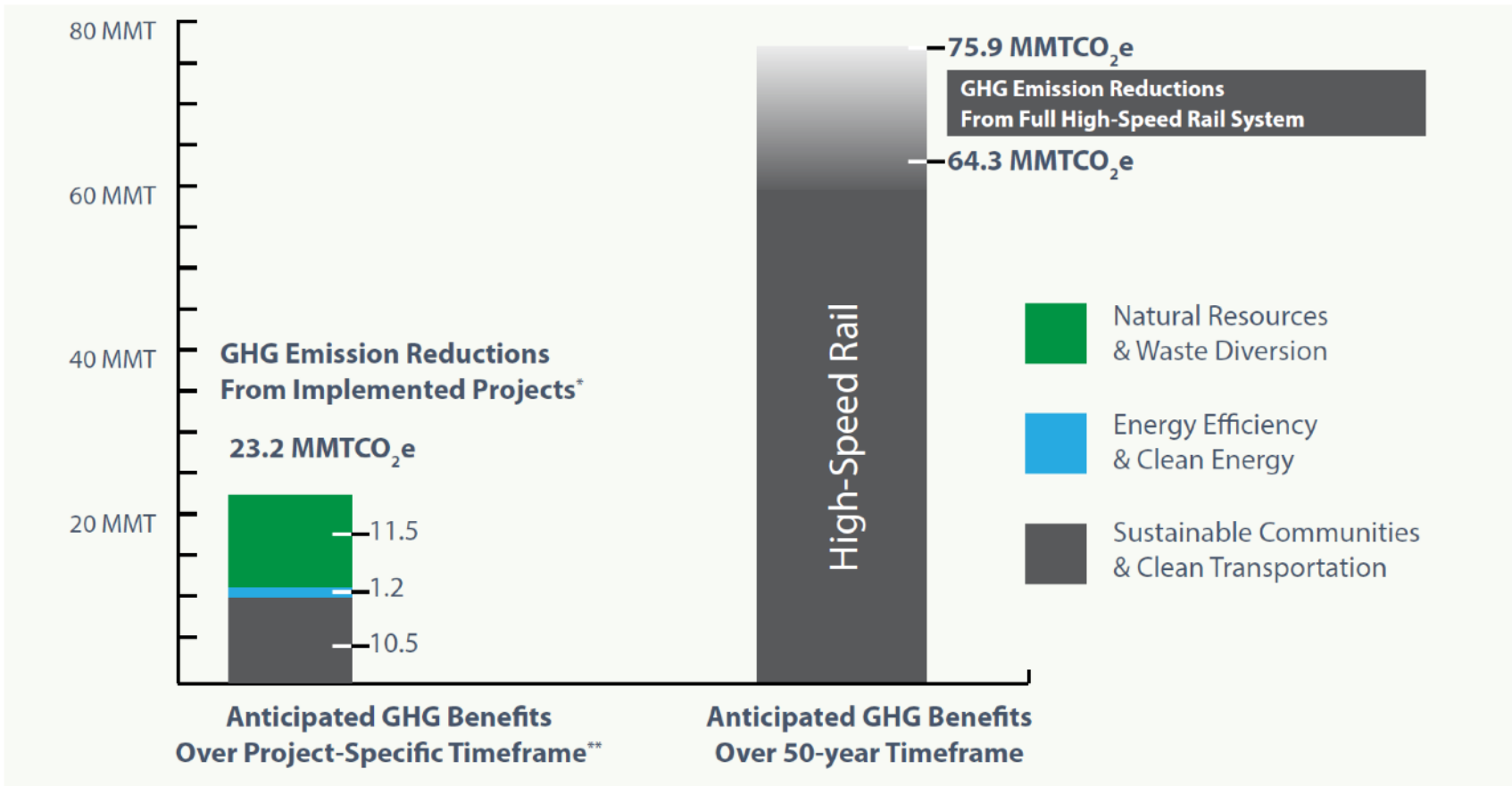
- More than 50,000 pounds of criteria air pollutants avoided.
- More than 2,000 acres of natural habitat preserved
- 2,400 trees being planted in Fresno parks and schools to offset emissions
- 463 small business, 115 in disadvantaged communities
- Top sustainable infrastructure project in North America for the second year in a row per theGRESB Infrastructure Assessment





# PART OF CALIFORNIA'S CLIMATE STRATEGY

**Exhibit 2: California Climate Investments and Greenhouse Gas Emissions Reductions**  
(MMTCO<sub>2</sub>e=million metric tons of carbon dioxide equivalent)



\*Estimates for California Climate Investments implemented through 2016 & 2017; does not include benefits from High-Speed Rail Project.

\*\*[https://www.arb.ca.gov/cc/capandtrade/auctionproceeds/2018\\_cci\\_annual\\_report.pdf](https://www.arb.ca.gov/cc/capandtrade/auctionproceeds/2018_cci_annual_report.pdf)



# NEXT STEPS

---

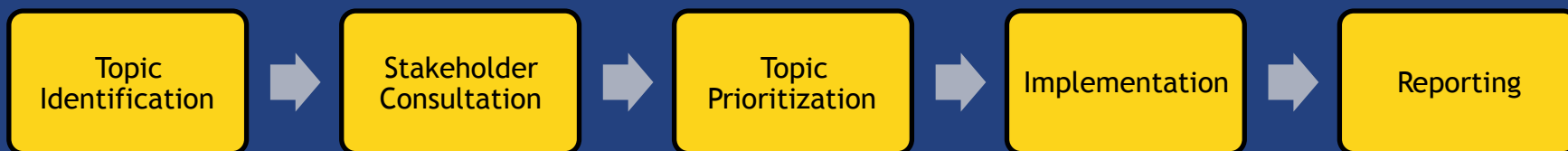
## Gathering Insight from Stakeholders

Many of you contributed to the 2014 initial “materiality assessment”

We are refreshing our approach now

- » Evolution of the agency
- » New guidance from the Global Reporting Initiative

Your insight is key to the Authority understanding the right and most effective implementation steps!



A **materiality assessment** is a process of stakeholder engagement and analysis undertaken to quantify the relative significance of different environmental, social, and governance issues to the organization or project in question.

# MOVING FORWARD

---

## Implementation

- Incorporate insights from stakeholders on implementation plan
- Refresh existing policies to reflect
  - » Agency evolution
  - » Board priorities
  - » Stakeholder input
  - » New regulations
- Evaluate carbon targets for upcoming procurements

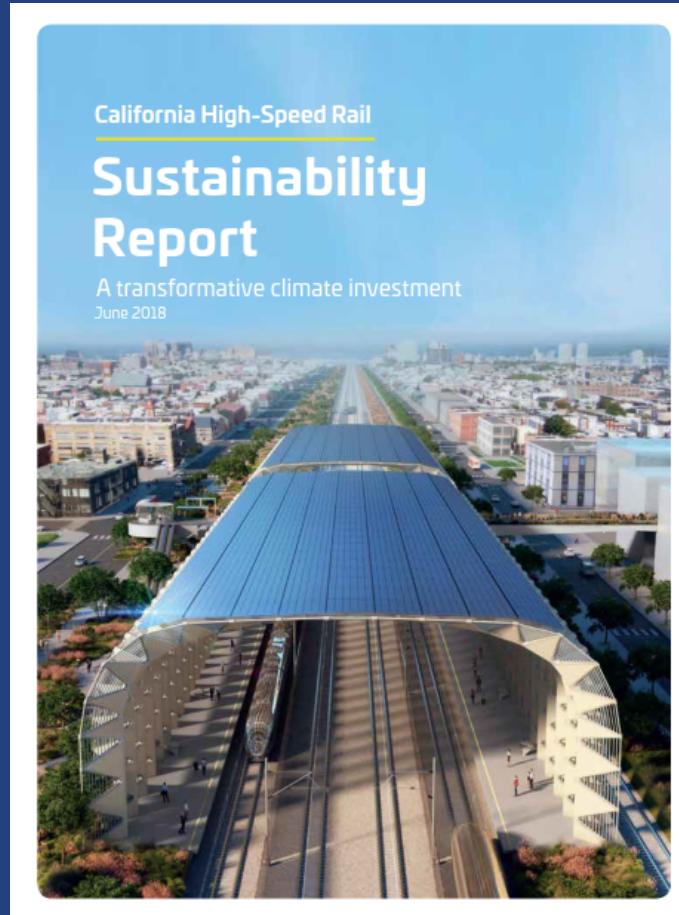
## Reporting

- Progress reports to Board on key commitments
- Update annual Global Reporting Initiative to new standard
- ARB reporting, including new co-benefits calculations

## Construction

- Continued focus on construction performance
- Evaluate additional third party verification

# QUESTIONS & COMMENTS



# THANK YOU & NEXT STEPS

---

**Margaret Cederoth**, Director of Sustainability  
(916) 403-2691 [margaret.cederoth@hsr.ca.gov](mailto:margaret.cederoth@hsr.ca.gov)

**Website:** [www.hsr.ca.gov](http://www.hsr.ca.gov)

**Sustainability Page:** [www.hsr.ca.gov/sustainabilitytools](http://www.hsr.ca.gov/sustainabilitytools)

## Headquarters

California High-Speed Rail Authority

770 L Street, Suite 600

Sacramento, CA 95814

[www.hsr.ca.gov](http://www.hsr.ca.gov)



[facebook.com/CaliforniaHighSpeedRail](https://facebook.com/CaliforniaHighSpeedRail)



[twitter.com/cahsra](https://twitter.com/cahsra)



[youtube.com/user/CAHighSpeedRail](https://youtube.com/user/CAHighSpeedRail)