

**FARMLAND PRESERVATION**  
**What's Sprawl Got To Do With It?**



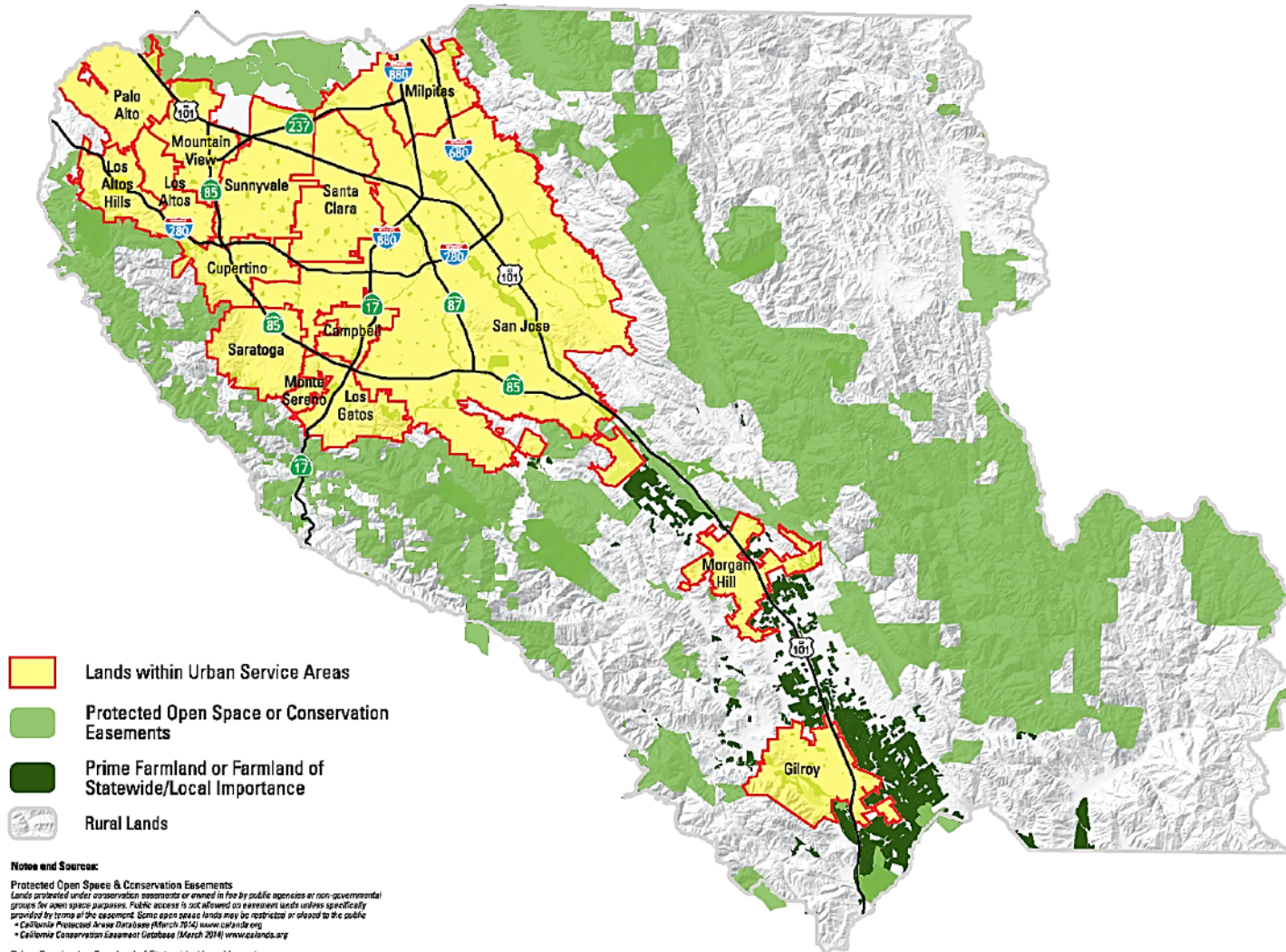
# WHAT IS LAFCO?

An independent agency created by the state legislature with a mandate to:

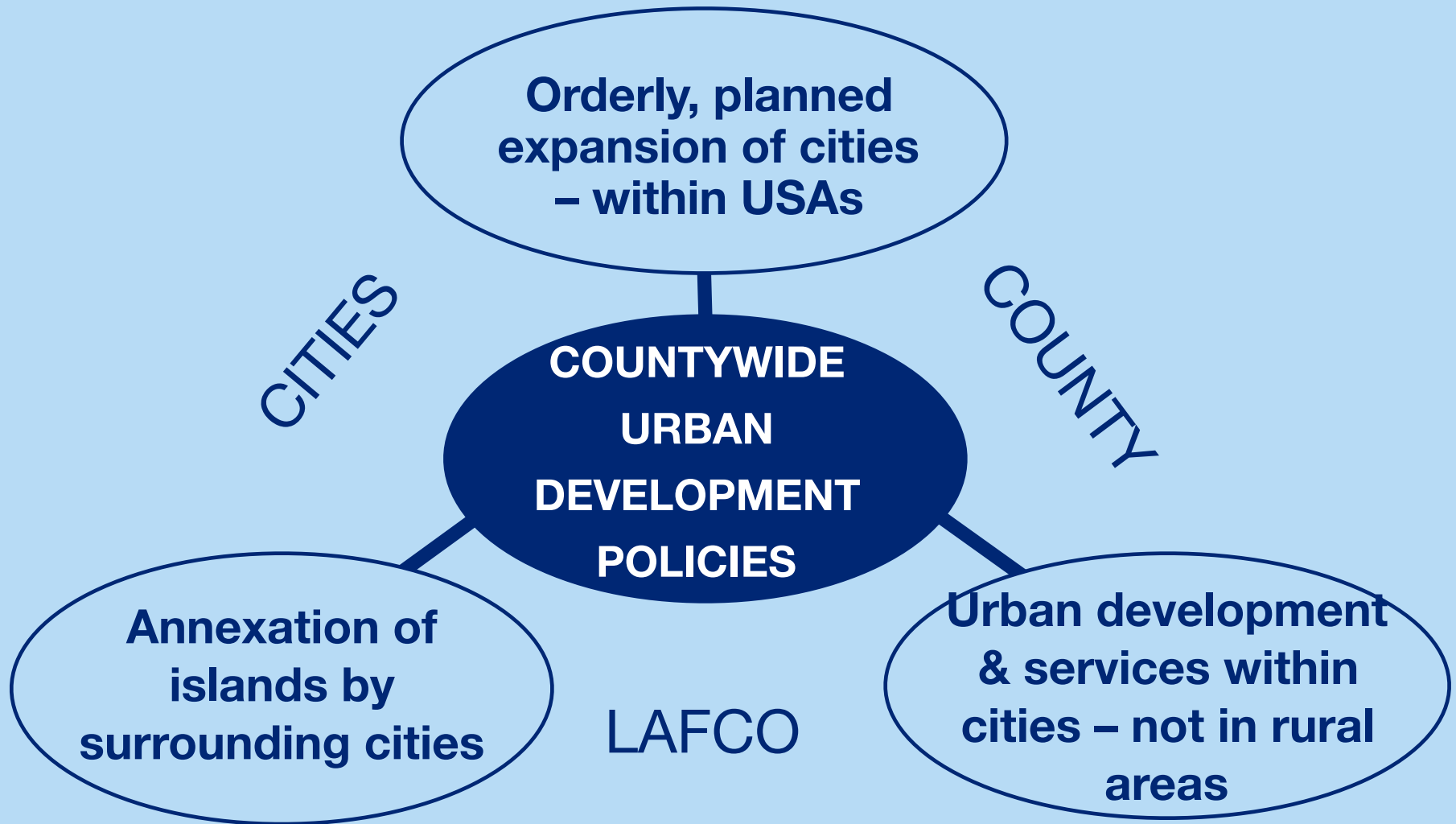
- Encourage orderly growth
- Discourage urban sprawl
- Preserve agricultural and open space lands
- Ensure efficient delivery of services



# CONTAINING SPRAWL AND PROTECTING RESOURCE LANDS

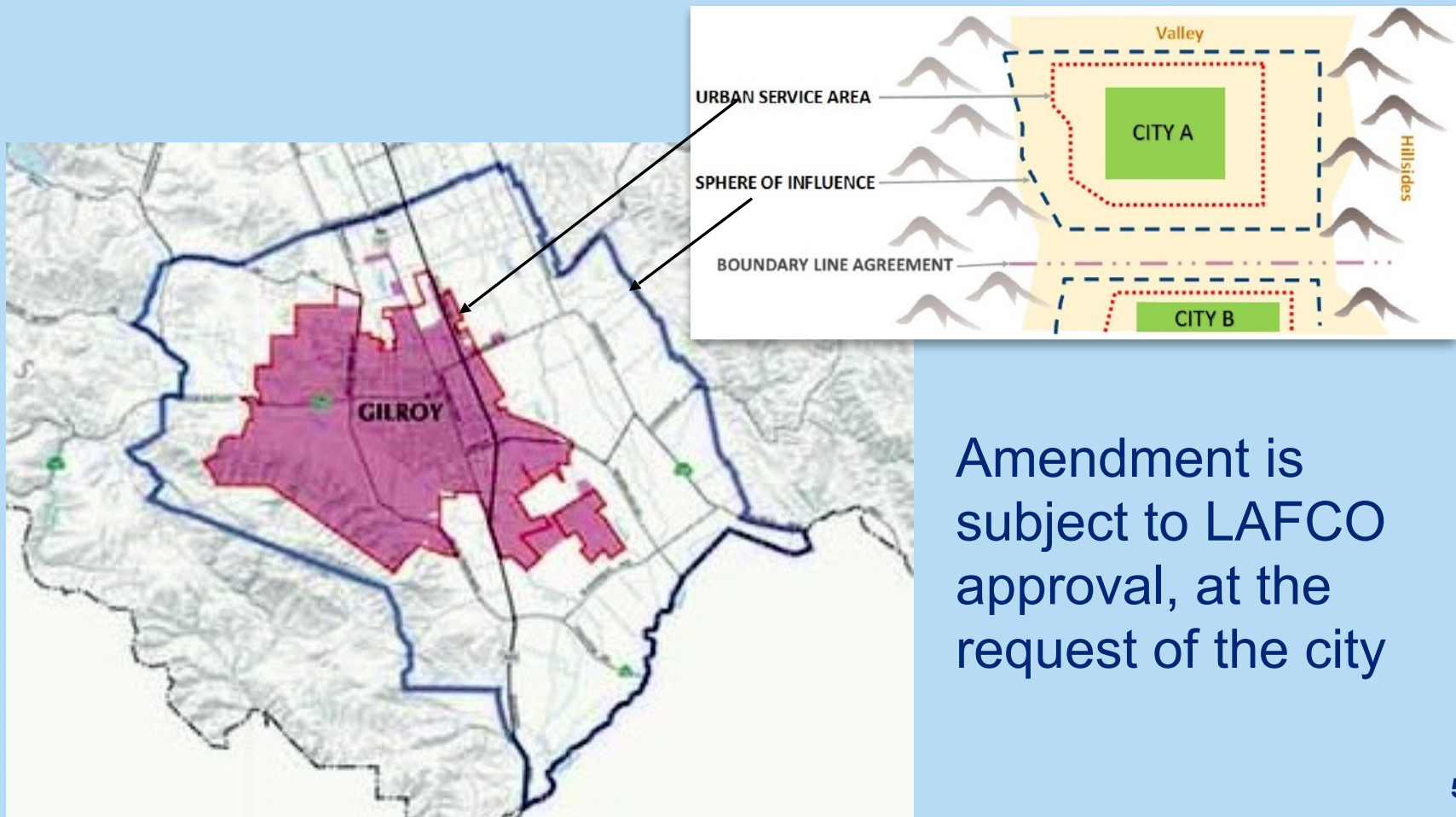


# PROMOTING SUSTAINABLE GROWTH



# URBAN SERVICE AREAS

Areas intended for annexation to a city in order to be developed and provided with urban services



Amendment is subject to LAFCO approval, at the request of the city

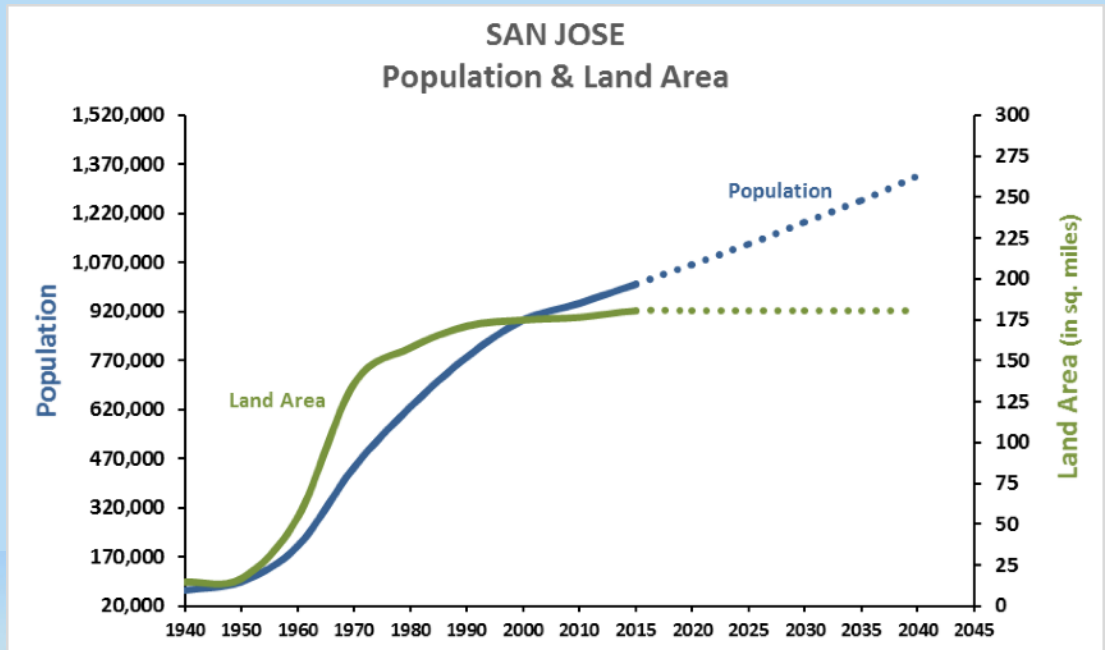
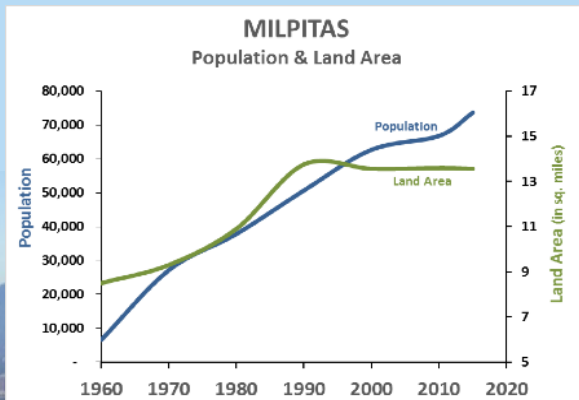
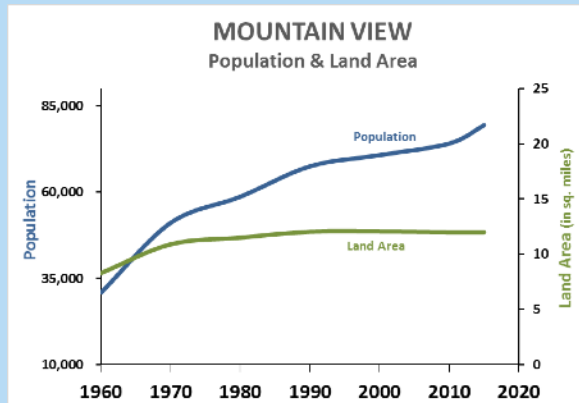
# A KEY CONSIDERATION FOR USA EXPANSIONS

When LAFCO approves a USA expansion it is in anticipation of annexation and development

- Is there a need for the expansion?
- Is there vacant or underutilized land within the City's existing boundaries to accommodate the proposed or anticipated development?



# MOST CITIES ACCOMMODATING GROWTH WITHOUT OUTWARD EXPANSION



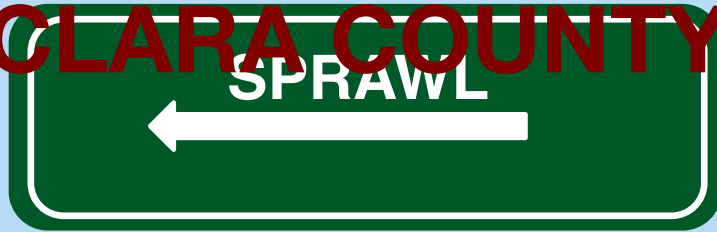
# **... BUT CHALLENGES REMAIN**

Multiple and repeated city USA expansion proposals since 2009 seeking to convert over 1,000 acres of prime farmland despite large inventories of vacant / underutilized land within current boundaries

More intense urban uses proposed in rural unincorporated areas likely to generate city sewer & water service extension requests in the future



# IS IT TIME TO FINALLY DECLARE AN END TO SPRAWL IN SANTA CLARA COUNTY?



- Continued increases in greenhouse gas emissions
- Dependency on auto travel
- Higher cost to provide public infrastructure and services
- Loss of farmland
- Less food security
- Loss of natural lands
- Reduced ecological services



- Reduced greenhouse gas emissions
- More transportation options, (walking, cycling, public transit)
- Better utilization of existing community assets
- Access to local foods, greater food security
- Greater range of housing opportunities and choices
- Walkable neighborhoods, vibrant downtowns

# HOW DOES LAFCO MAKE DECISIONS?



Opportunities for  
Public Input

# HOW DOES LAFCO MAKE DECISIONS?



LAFCO Staff Prepares Report & Recommendations  
CKH Act + LAFCO Policies + Professional Expertise



Commission Makes Decision at a Public Hearing  
Staff Recommendation + Public Testimony +  
Independent judgement in furthering the purposes of the  
CKH Act and the public as a whole, not solely the  
interests of their appointing authority

Opportunities for  
Public Input