

# Santa Clara Valley Agricultural Plan

**Growing A Vibrant Regional Agricultural Economy  
Investing in our Working Lands for Regional Resilience**

- \* Two Year Program
- \* County of Santa Clara & Open Space Authority
- \* Funded by Sustainable Agricultural Land Conservation Grant (SALC)  
- \$100,000

FOOD FROM  
**Santa Clara  
Valley**



WORKING LANDS  
**Santa Clara  
Valley**



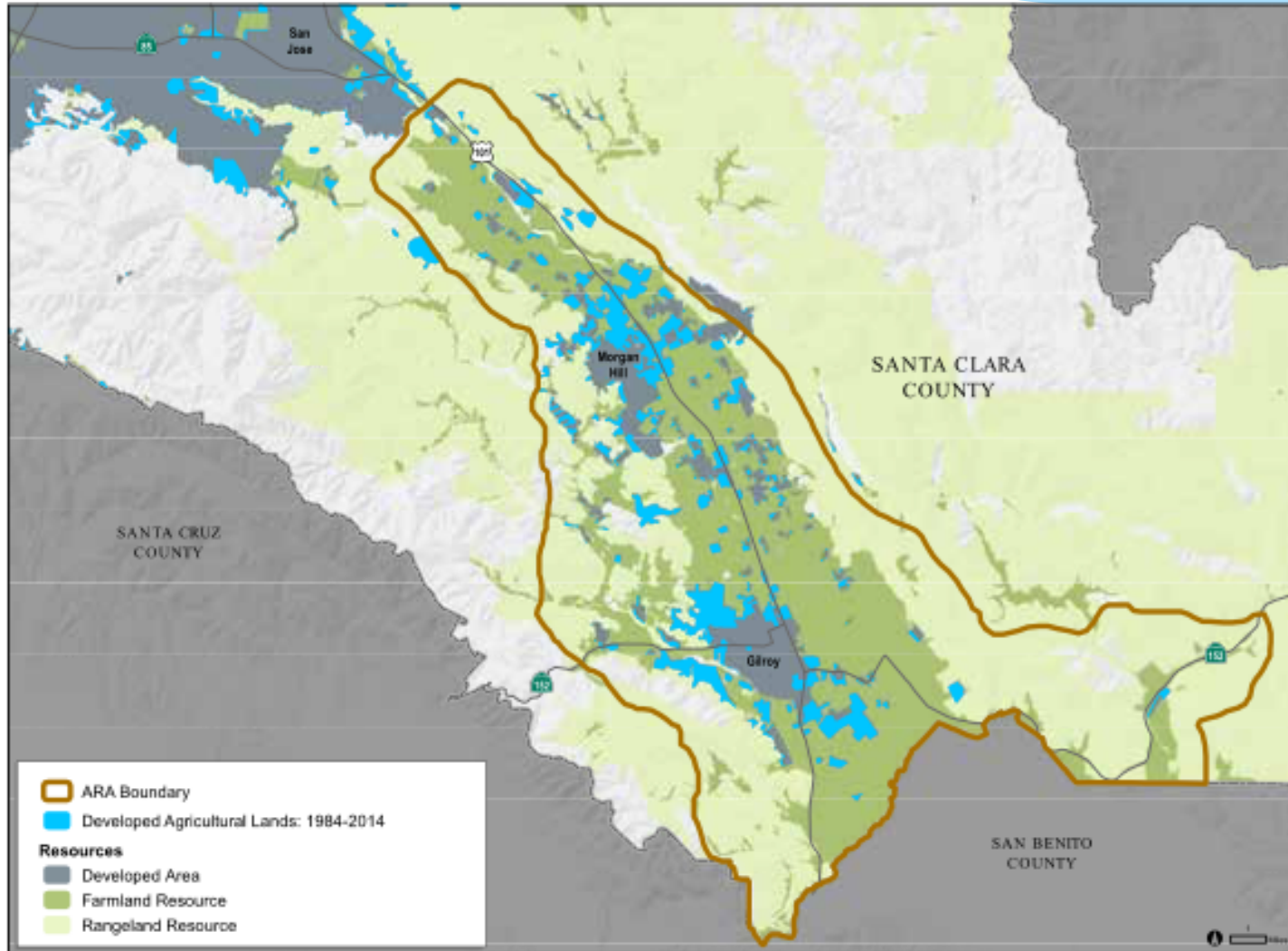
FOUNDATIONAL GOALS

*Keep our Working Lands at Work*

*Honor the Importance of  
Agriculture to Santa Clara Valley*

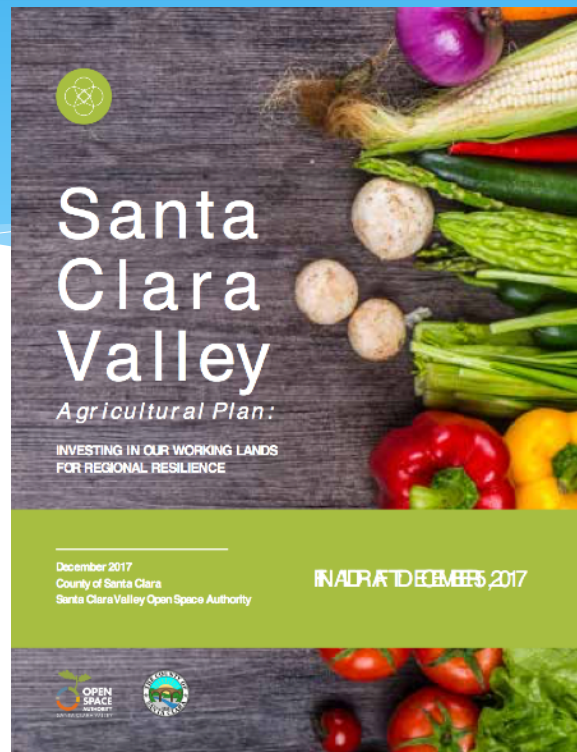
*Craft a Unified Regional Land Use  
Policy Framework for the Future*

# Santa Clara Valley Agricultural Plan



MAP 3-2: AREA OVERVIEW OF AGRICULTURAL LANDS AND CONVERSIONS: 1984-2014

# What makes the Valley Ag Plan different?



# Agriculture & Sustainability

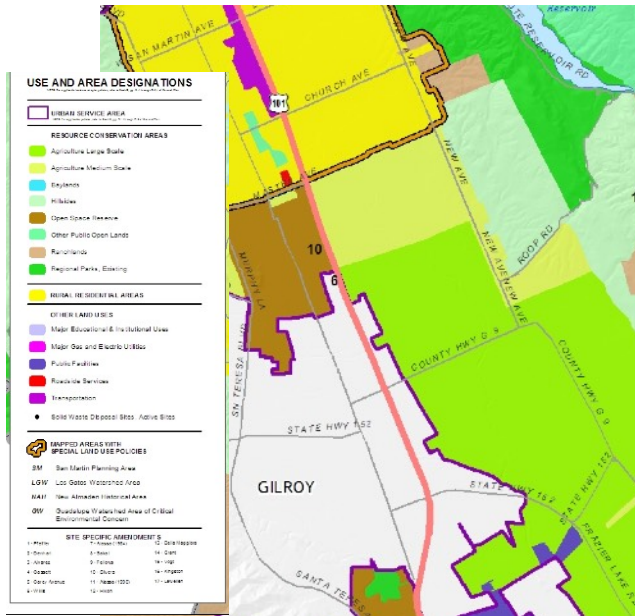
Greenhouse Gas Reduction  
Food Security  
Groundwater absorption  
Climate Resilience

## Traditional Views

Open Space  
Preventing Sprawl



# Its not just Zoning



 LAND USE POLICY

- \* Zoning Ordinance
- \* Agricultural Buffers
- \* Ag Conversion Fee
- \* Right to Farm

 AG LAND CONSERVATION EASEMENTS &  
OTHER VOLUNTARY FINANCIAL INCENTIVES

- \* Agricultural Conservation Easement Program
- \* Farmland Security Zone
- \* Payment for Ecosystem Services

 AG ECONOMIC DEVELOPMENT STRATEGY

- \* Ag Ombudsmen
- \* Local Food Preference Policy
- \* Agricultural Tourism
- \* Ag Incubator

 BRANDING, EDUCATION & AWARENESS STRATEGY

- \* Placemaking / Branding
- \* Farmer Stories
- \* Education and Awareness

# Outreach & Collaboration

## \* Advisors

- \* Farming, Policy, Economics Experts across the State

## \* Technical Advisors

- \* Agriculturalists - Farm Bureau, Food System Alliance, Farmers
- \* Municipal - San Jose, Gilroy, Morgan Hill, Water District



“  
The farm products coming out of our Valley are better than the rest because we have better soil, water and climate than anywhere else. Our walnuts have more white meat. Our cherries are sweeter.”

CHRIS & MARY BORELLO



“  
If you're running a sustainable operation, if you're doing things right, everything else just falls into place.”

JUSTIN & ARLEAH FIELDS



# Valley Ag Plan Now

- \* **Adoption by Board of Supervisors on January 9, 2018**
- \* **Agricultural Preservation Task Force**
  - \* Monthly through end of 2018
- \* **Initial Agricultural Conservation Easement Projects**
  - \* Fountain Oaks - 70 acres - Morgan Hill
  - \* San Martin Agricultural Preserve - 330 acres
- \* **Agricultural Worker Housing - Permit Streamlining**



# Santa Clara Valley

YOUR LANDS AT WORK

# Partner Collaboration



LAFCO & the Food System Alliance & Regional Agricultural Preservation



# A Collaborative

Who we are

What we do

Why it's important

Our involvement in the SCVAP

Our current project



# What You Can Do

## Vote with your dollars

- local purchasing policy
- buy local

## Support farmland preservation

- vote for funding for ACE program

