

SPUR

Ideas + Action for a Better City

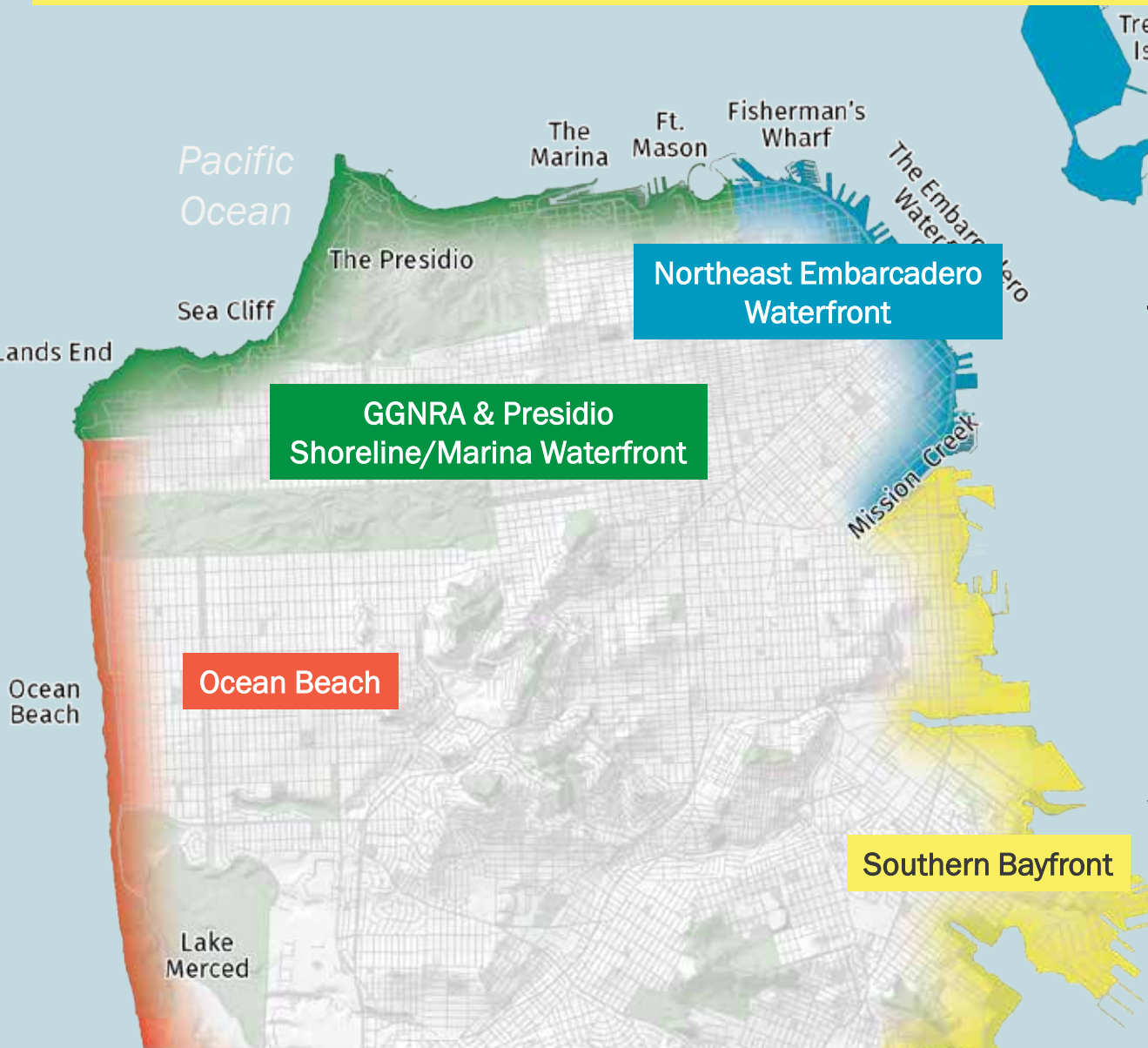
learn more at SPUR.org

tweet about this event:

@SPUR_Urbanist

#OakED101

The Southern Bayfront Negotiation Framework



36,000

People Already
Live Nearby



23,000

People Already
Work Nearby

The Southern Bayfront is a collection of dynamic neighborhoods, vibrant communities, and a large and multi-faceted waterfront.

Now proposed projects will bring new investment to this district...

How do we focus investment to address the needs of the diverse communities within the Southern Bayfront, while also serving the needs of a growing city?



Southern Bayfront



20,000 New Households

This equals over 40,000 new residents
33% of these new households will be affordable



6,700 Affordable Households

New affordable households will include a mixture of rental apartments and for-sale condos



38,000 New Jobs

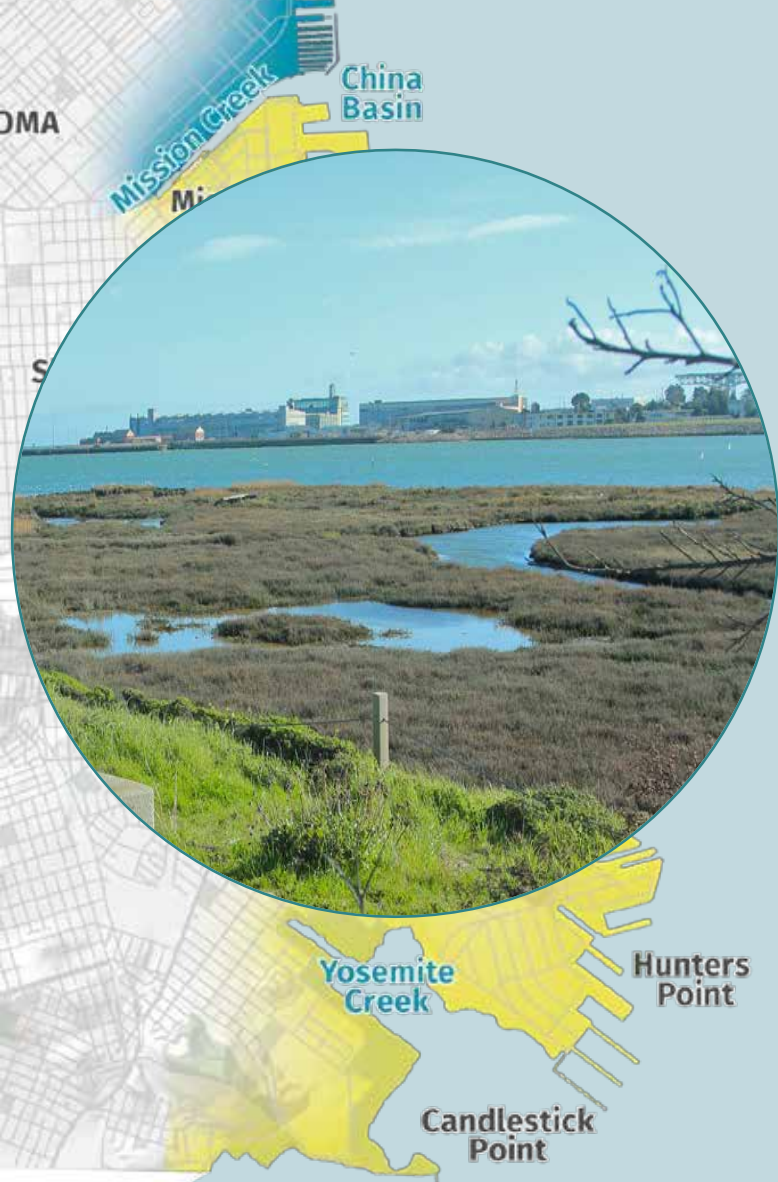
These new permanent jobs will be created across a mix of industries such as office, PDR and retail



520+ New and Renovated Acres of Open Space

This is half the size of Golden Gate Park and is nearly all of the new public open space planned in the City

Southern Bayfront



Negotiation Framework

Open
Space

Construct permanent public open space for neighborhood and Citywide use

- Neighborhood amenities (playgrounds, dog parks) and water recreation (boat launches, kayaking) in all projects
- At least one large recreational asset in an accessible location within the district

Design open spaces that are public and accessible to everyone

- Meet public design and wayfinding standards developed by Rec and Park, Port, and Planning
- Adopt consistent operating rules and regulations developed by Rec and Park and Port
- Provide public user information through established outlets (ex. Rec and Park's website)

PARKS + PATHS & SIDEWALKS + WATER LANDINGS+WATER TRAIL

= Blue Green way



Blue Greenway Parks



SPUR - A New Public Realm on the Waterfront

waterfront open spaces : scale + program



MISSION CREEK NORTH + SOUTH:
Dog park, relaxing, picnics, sports play, water access, events, nature preserve, kayaks, walking, community center, sports, amphitheater, community garden

MISSION ROCK:
Views, dogs, relaxing, picnics, water access, large multi-purpose lawn areas, play, events, sports

BAYFRONT / PIER 52:
Views, large multi-purpose lawn area, water access, relaxing, picnics, history, walking, fishing, cycling

CRANE COVE PARK:
Views, lawn, water access, relaxing, picnics, history, play, events, kayaks, cycling

PIER 70 WATERFRONT:
Views, dogs, relaxing, picnics, history, play, events, cycling, dining, art, culture, retail

WARM WATER COVE:
Views, dogs, relaxing, picnics, history, kayaks, cycling, native gardens

Park Acreage
Current / Planned





Pier 70 - crane cove park



history



water



program¹



(Pier 70 Master Plan by others)

Pier 70 Crane Cove Park



Pier 70 Crane Cove Park



Pier 70 – Waterfront Site - Forest City



SPUR - A New Public Realm on the Waterfront

PIER 70: UNCOVERING HISTORY, THE WATERFRONT & THE VIEW



SPUR - A New Public Realm on the Waterfront

AERIAL VIEW INDIA BASIN Waterfront - Parks System



BUILD | SOM | BIONIC | GEHL STUDIO | SHERWOOD



SPUR - A New Public Realm on the Waterfront



San Francisco Parks Alliance

Our Mission:

The mission of the San Francisco Parks Alliance is to inspire and promote civic engagement and philanthropy to protect, sustain and enrich San Francisco parks, recreation and green open spaces.

We Make Parks Happen

- Stewardship

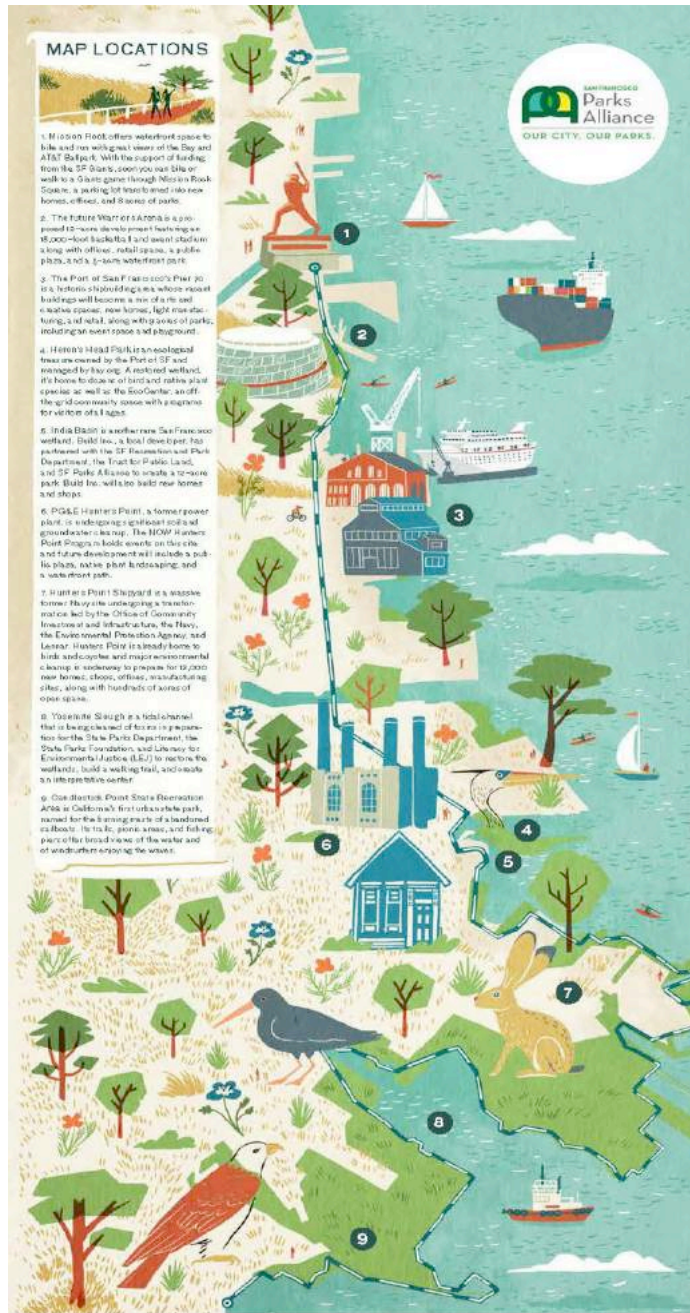


- Philanthropy



- Policy





Blue Greenway

What is it?

- 13 miles system of trails & parks that goes from AT&T Park to Candlestick Point.
- The Blue Greenway is a unifying identity for the rapidly changing southeast.
- The Blue Greenway promotes waterfront access

What is the involvement of the Parks Alliance?

- The Parks Alliance connects stakeholders
- Parks Alliance informs and engages the community

Blue Greenway Anchor Projects

Now



Vision



Crane Cove Park



India Basin, 900 Innes



Yosemite Slough, Candlestick



Past Milestones

- In 2003 SF Parks Alliance and SPUR initiated an effort to plan and implement open space improvements in the Southeastern waterfront.
- Co-chaired Mayor Newsom's taskforce to develop a Blue Greenway Vision for connecting parks and open spaces.
- Assisted the city in securing \$22 million in funding for Blue Greenway projects via the 2008 Parks Bond.
- Parks Alliance secured \$175,000 from US EPA for an Area Wide Plan to identify Brownfield sites for remediation and transformation into parks, trails, and recreation facilities.
- Secured \$900,000 in funding from the Hewlett Foundation

Mega-Region Connector



- Bay Trail
- Bringing together small 'universes'
 - Creating a Blue Greenway Identity

The Blue Greenway moving forward



Community Engagement and Outreach

Working as a connector

2016 Bike Workshop



2015 Bike to the Ballpark



Community Bus Tour, Candlestick Point

Sunday Streets Bayview



India Basin Concept Design Meeting



Blue Greenway Happy Hour, Website Launch

India Basin



- Partnership
 - Trust for Public Land
 - SFRPD
 - Build Inc.
 - Task-Force
- Visioning
- Funding

Candlestick Point State Park



- Partnership
 - Literacy for Environmental Justice
 - State Parks Foundation
 - California State Parks
- Projects
 - Yosemite Slough
 - Nursery
 - Campground
 - Workforce Development
- Housing

Next Steps



- Community Management Strategies
 - Management
 - Programming
 - Maintenance

Questions/ Comments

- Learn more at:
www.bluegreenway.org
- Contact us:
May Aguiar
Area Manager for the Southeast
may@sfparksalliance.org



Social Media

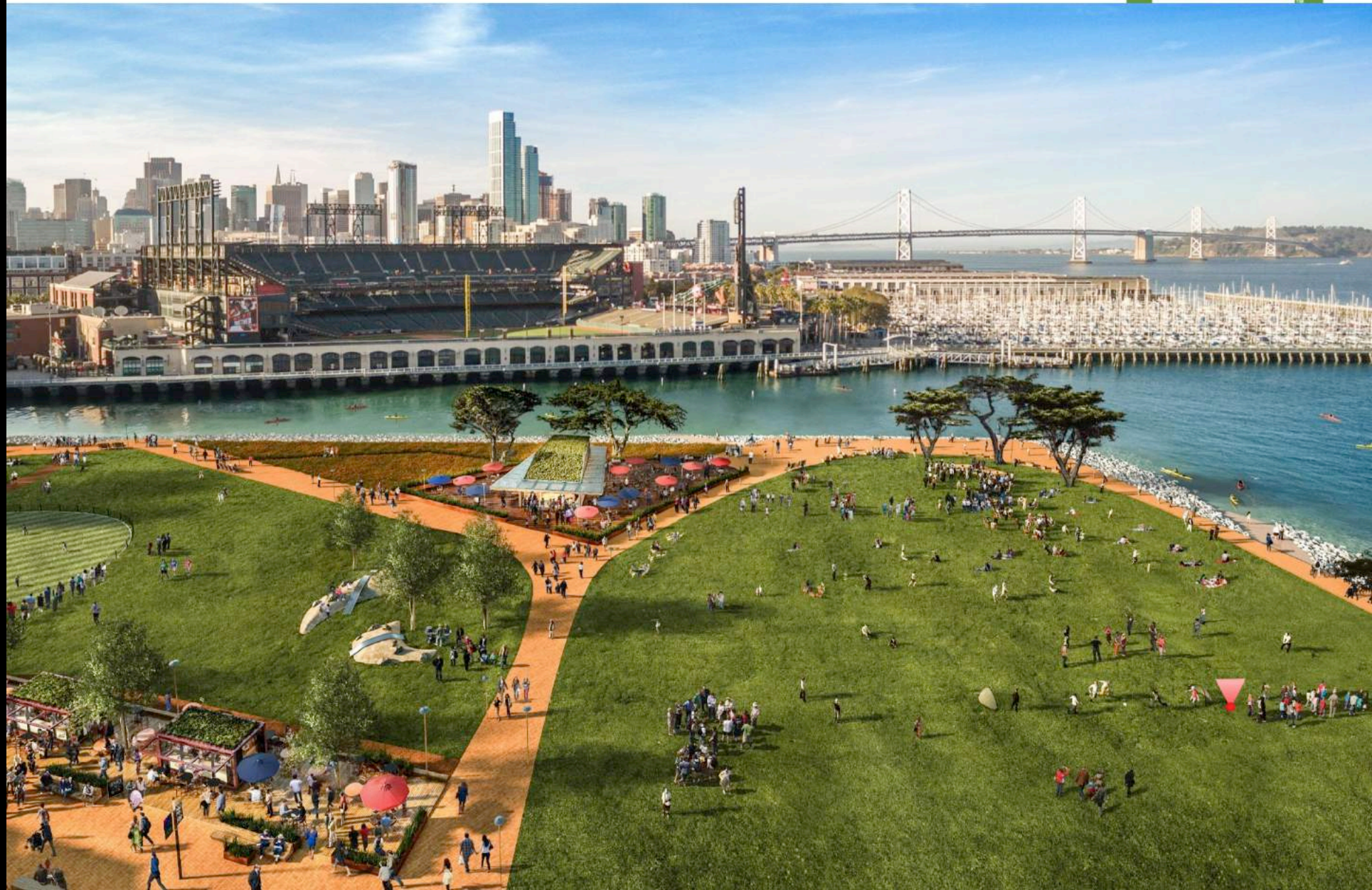
- @BlueGreenwaySF
- @SFParksalliance







China Basin Park



China Basin Park



China Basin Park



Mission Rock Square

MISSION
ROCK



Mission Rock Square



Shared Public Way Vision



Working Waterfront Vision



Public Realm











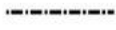
LEGEND: STREET TYPOLOGIES

- Open Space
- Open Space/Maritime Use
- Shared Public Way (one-way traffic)
- Working Waterfront (two-way traffic)
- Neighborhood Streets (two-way traffic)
- Paseos (Pedestrian-only street extension)
- District Street
- BCDC Shoreline Band within Project Limit
- Upper Limit of BCDC Bay Jurisdiction
- Seawall
- Major Permit Application Line



Bicycle Circulation


LEGEND: BICYCLE CIRCULATION

-  Bay Trail/Blue Greenway: China Basin Park (Primary N-S Bicycle Connection; Multi-Use Trail)
-  Protected Cycle Track: Bridgeview + Mission Rock Streets (Primary N-S Bicycle Connection)
-  Bay Trail/Blue Greenway: Terry A Francois Blvd and China Basin Park (Multi-Use Trail)
-  Class II Bike Lane
-  Sharrows / Shared Travelway
-  Open Space
-  Open Space/Maritime Use
-  BCDC Shoreline Band within Project Limit
-  Upper Limit of BCDC Bay Jurisdiction
-  Seawall
-  Major Permit Application Line



A Neighborhood of Parks

LEGEND: OPEN SPACE

-  Open Space
-  Open Space/Maritime Use
-  Major Pedestrian/Bike Connection
-  BCDC Shoreline Band within Project Limit
-  Upper Limit of BCDC Bay Jurisdiction
-  Seawall
-  Major Permit Application Line



BCDC 100' Shoreline Band includes:

- China Basin Park
- Terry A Francois Boulevard



Public Art: Reinforcing Open Space Connections



"Floating Umbrellas" is a temporary overhead installation that activates an alley in Agueda, Portugal. SOURCE: JFINDOKARMA / FLICKR



Temporary Art: Ecstasy in Hayes Valley, SF and The Gates in Central Park, NYC are examples of temporary public art of scale. © MATEAFISH. ONTHEARTOFACION.WORDPRESS.COM SOURCE: ROB BOUDON / FLICKR

LEGEND: SUGGESTED PUBLIC ART SITES

- **Permanent Public Art:**
 - Mission Rock Square
 - Channel Wharf
 - Channel Street
 - Channel Lane
 - China Basin Park at 3rd Street
 - China Basin Park Waterfront
- **Temporary Public Art:**
 - Streetlife Zones



FIGURE 2.11.1 Suggested Public Art Sites Diagram illustrating potential locations of permanent and temporary public art within open spaces and streetlife zones in the public realm. See Chapters 3-4 for related circulation and program controls.

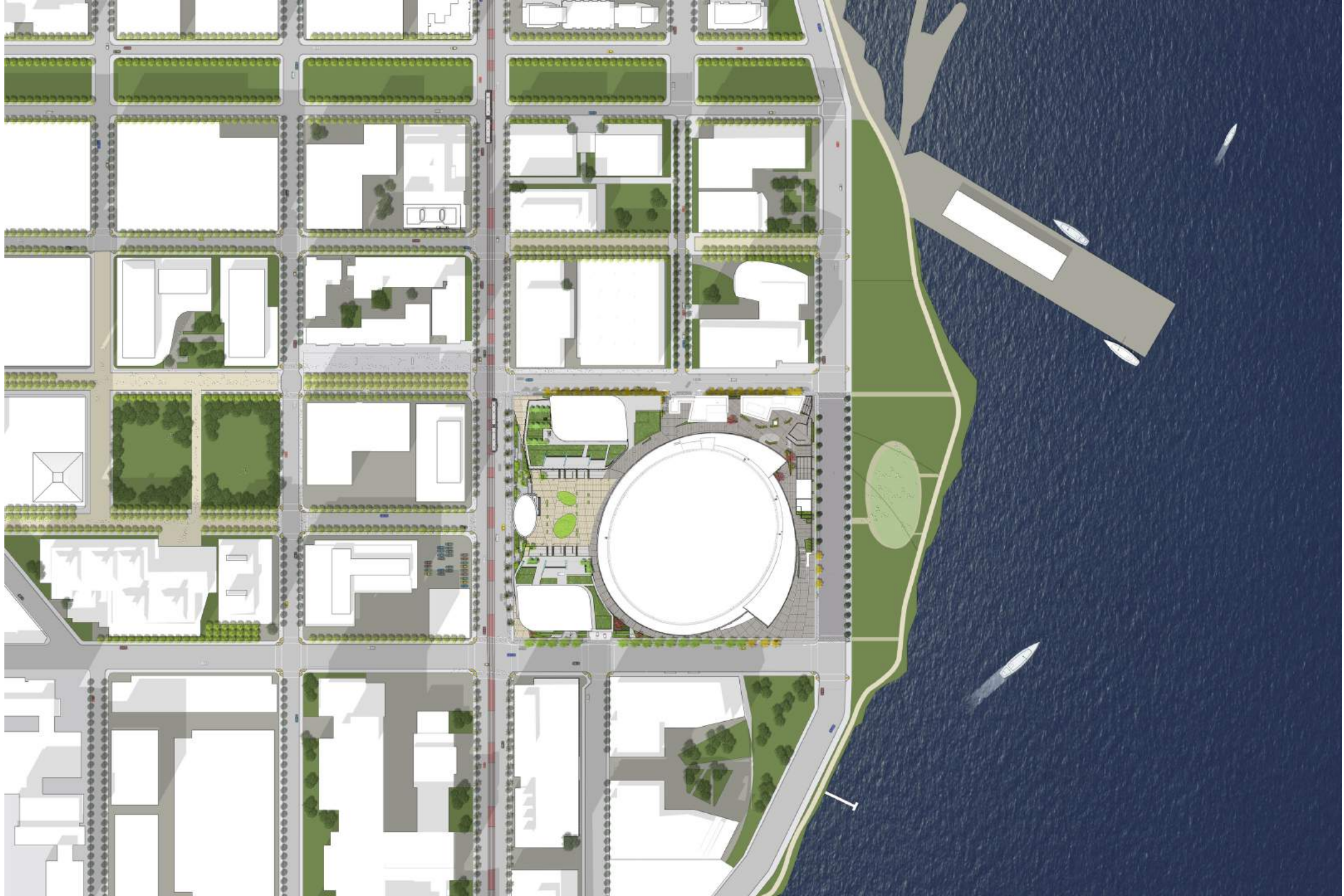
Preparing for 2100

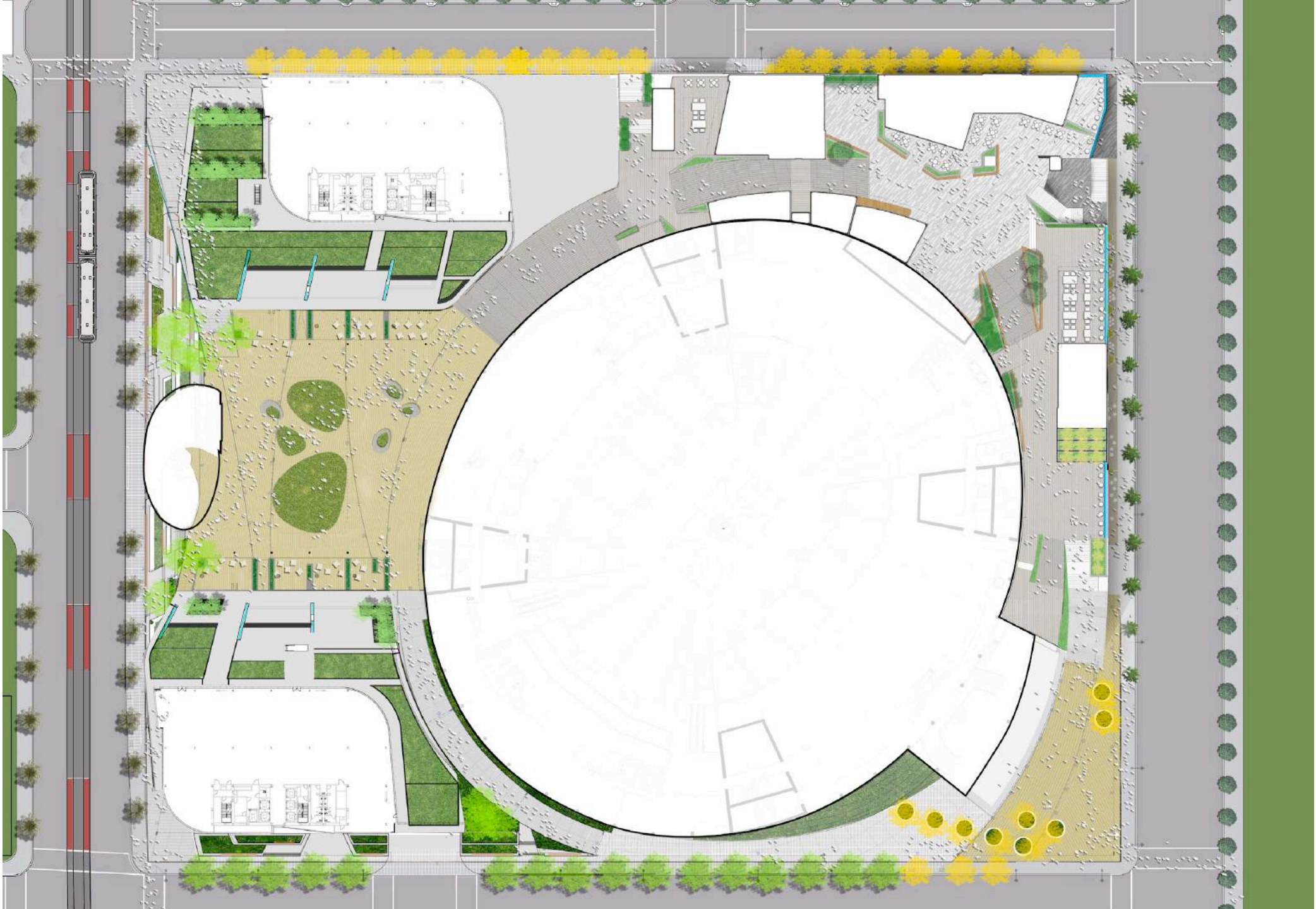




SPUR Forum: A New Public Realm on the Waterfront

October 3, 2017





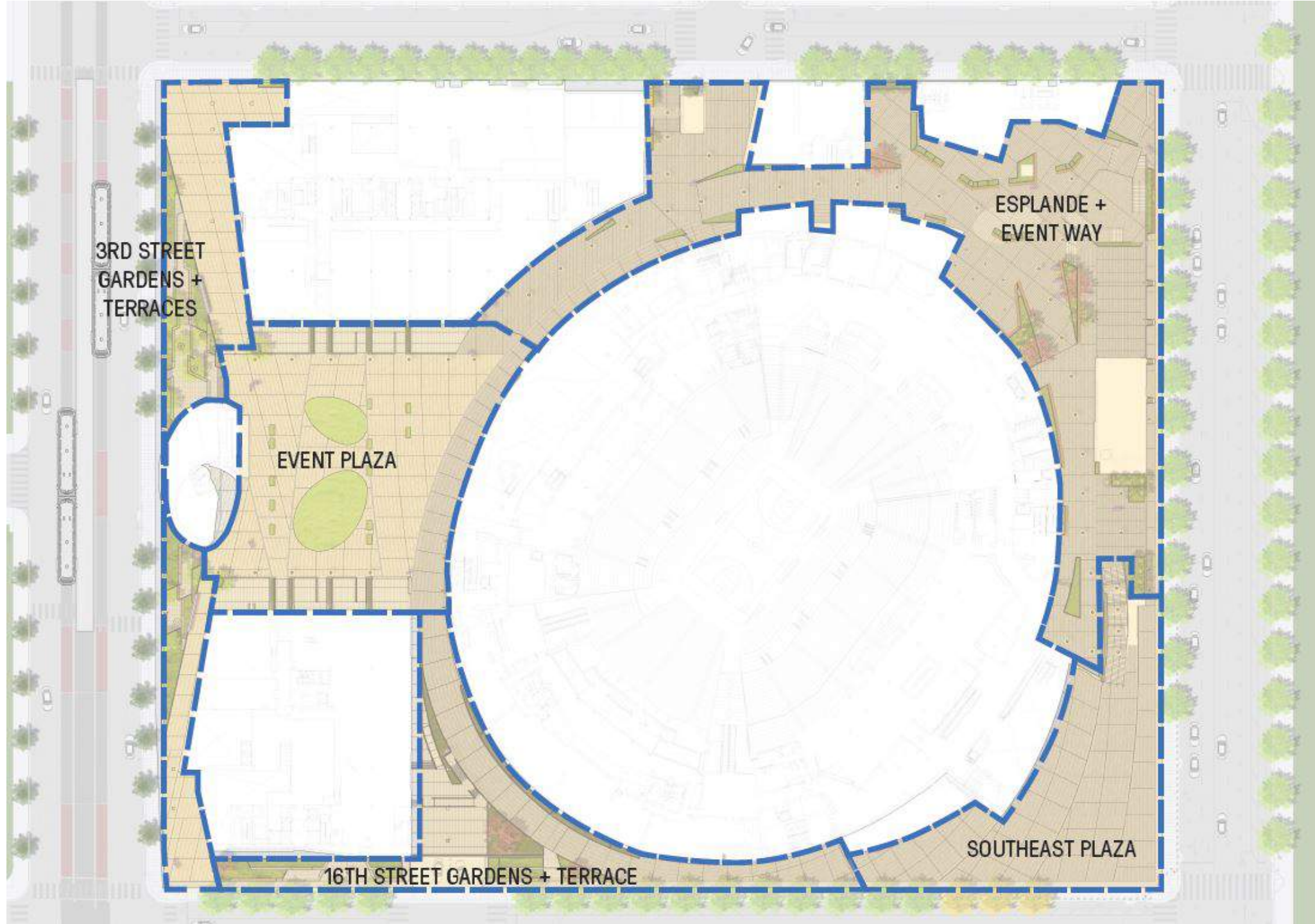
3RD STREET
GARDENS +
TERRACES

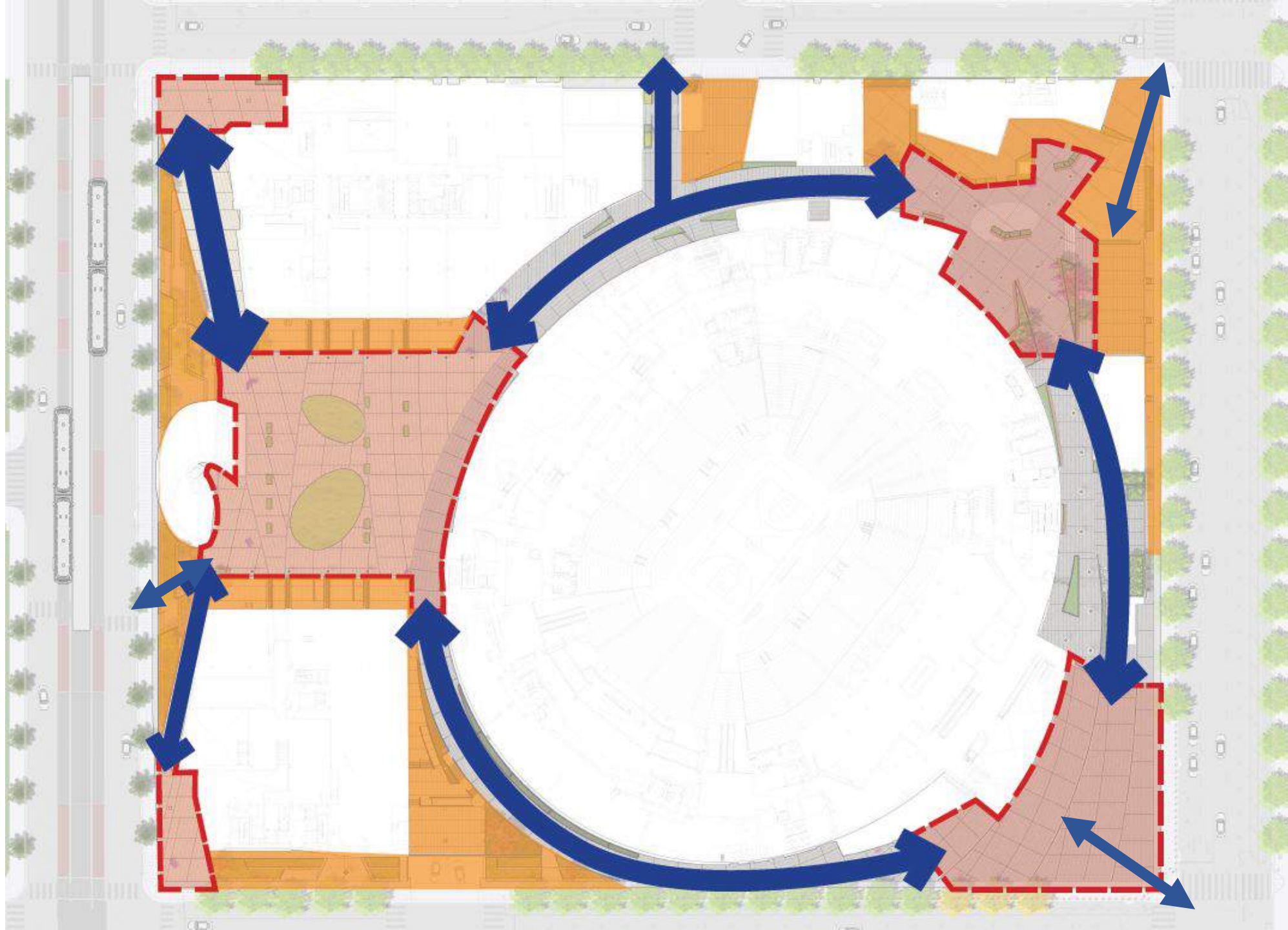
EVENT PLAZA

ESPLANDE +
EVENT WAY

16TH STREET GARDENS + TERRACE

SOUTHEAST PLAZA



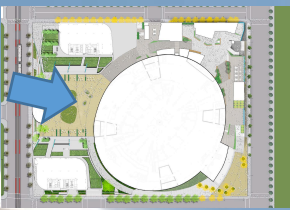


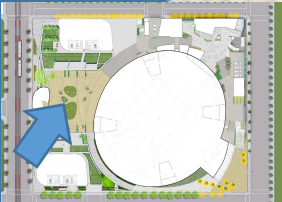
 FOCUS AREAS
(EVENTS, IDENTITY)

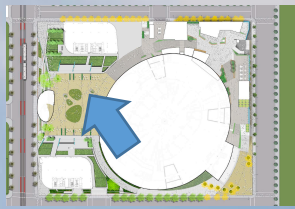
 TERRACES
(GATHERING, RESPITE)

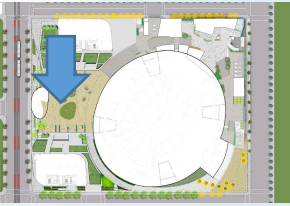
 PRIMARY
CIRCULATION





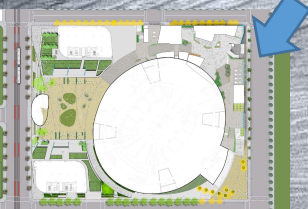


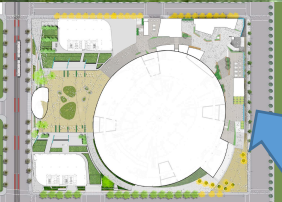


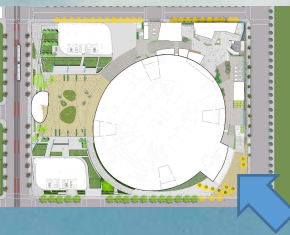






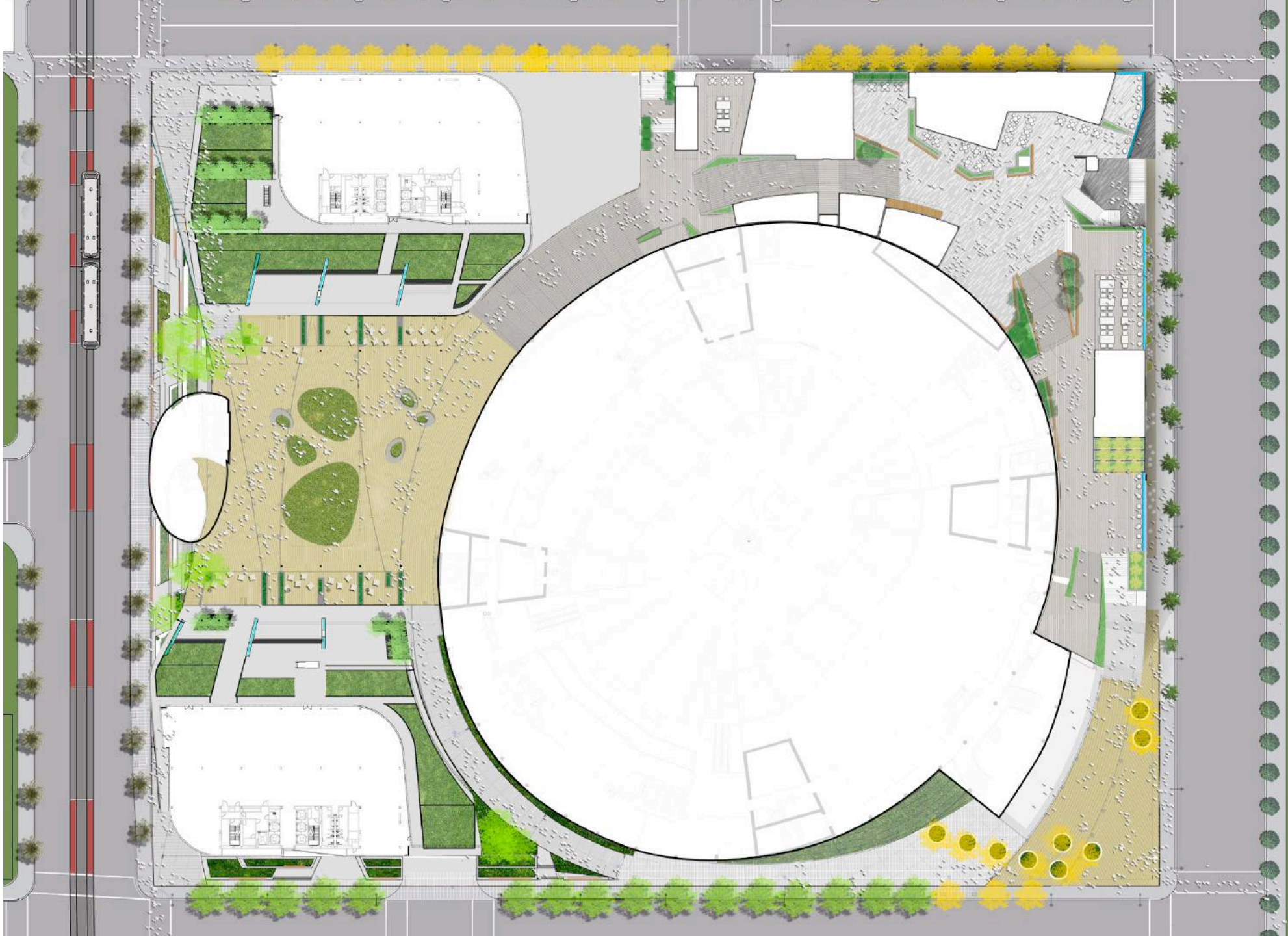


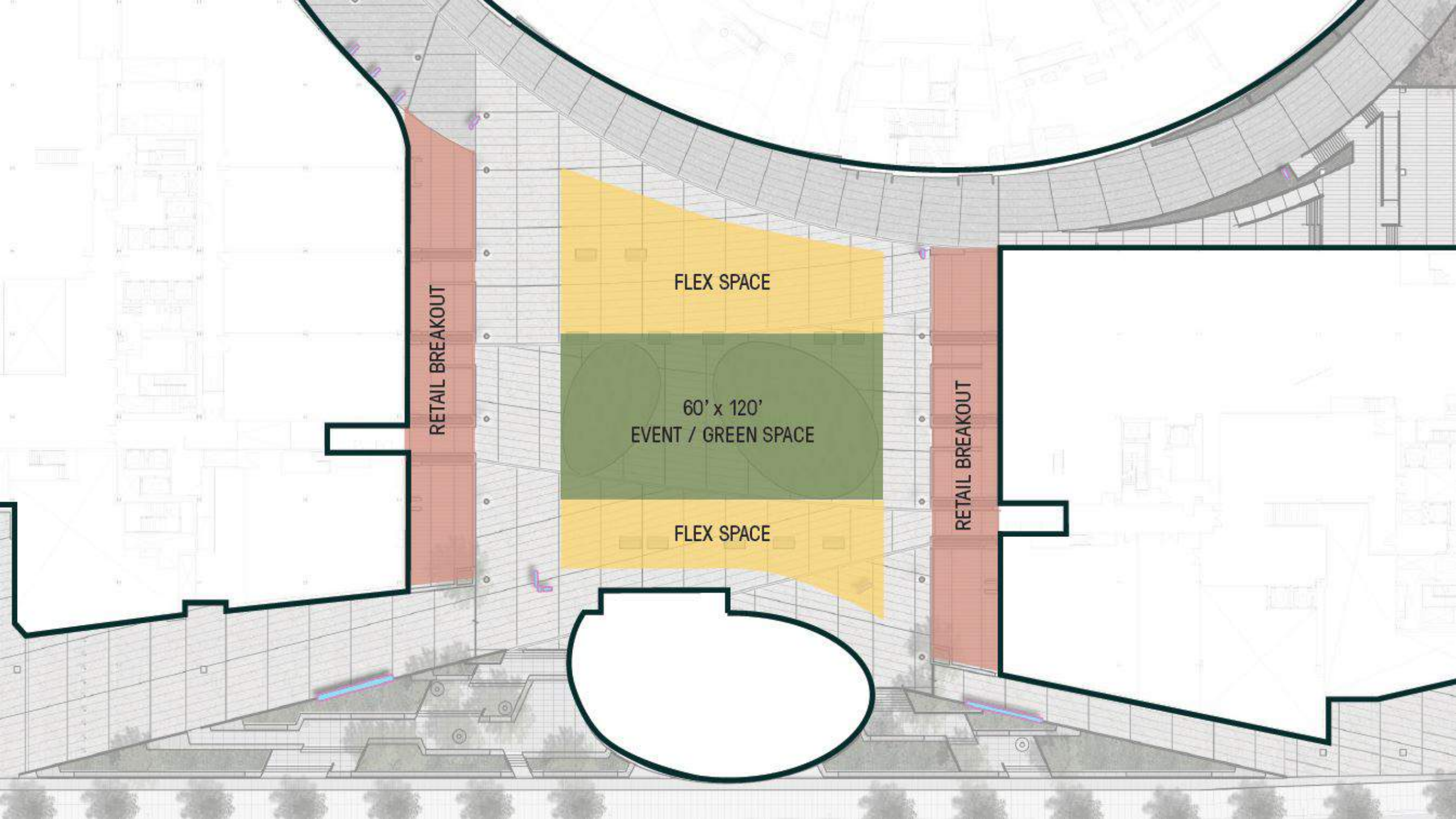












RETAIL BREAKOUT

FLEX SPACE

60' x 120'
EVENT / GREEN SPACE

FLEX SPACE

RETAIL BREAKOUT

CHASE  **CENTER**



Coming Fall 2019