



ST JAMES PARK REMEMBER



IMAGINE

CMG

FUTURE CITIES LAB
PAGE & TURNBULL

ARUP
Oppenheim | Lewis

steelblue





1901 - CARNIVAL OF ROSES TO HONOR PRESIDENT MCKINLEY



1890-SAN JOSE'S PREMIER CIVIC GREEN SPACE







E St James St

N 3rd St

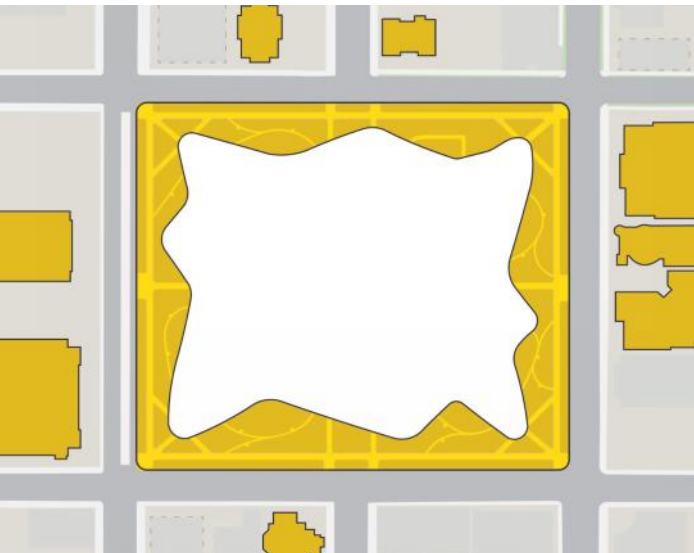
N 1st St

E St John St



CELEBRATE

HISTORIC EDGE



ACTIVATE

CONTEMPORARY CORE



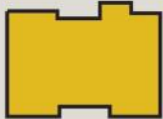
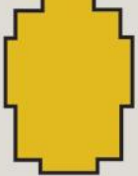
INTEGRATE

MONUMENT WALK

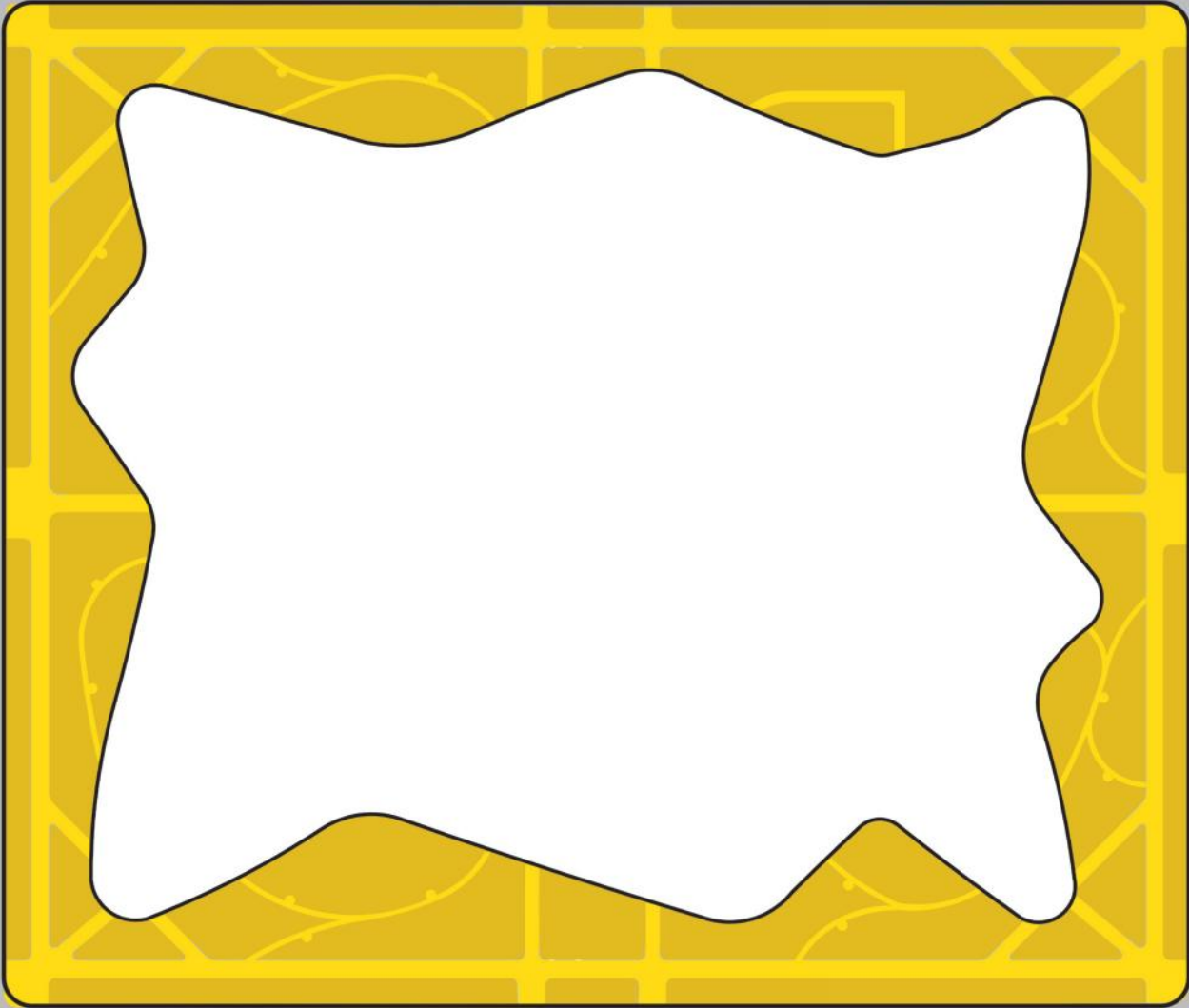


CELEBRATE

HISTORIC EDGE



E St James St

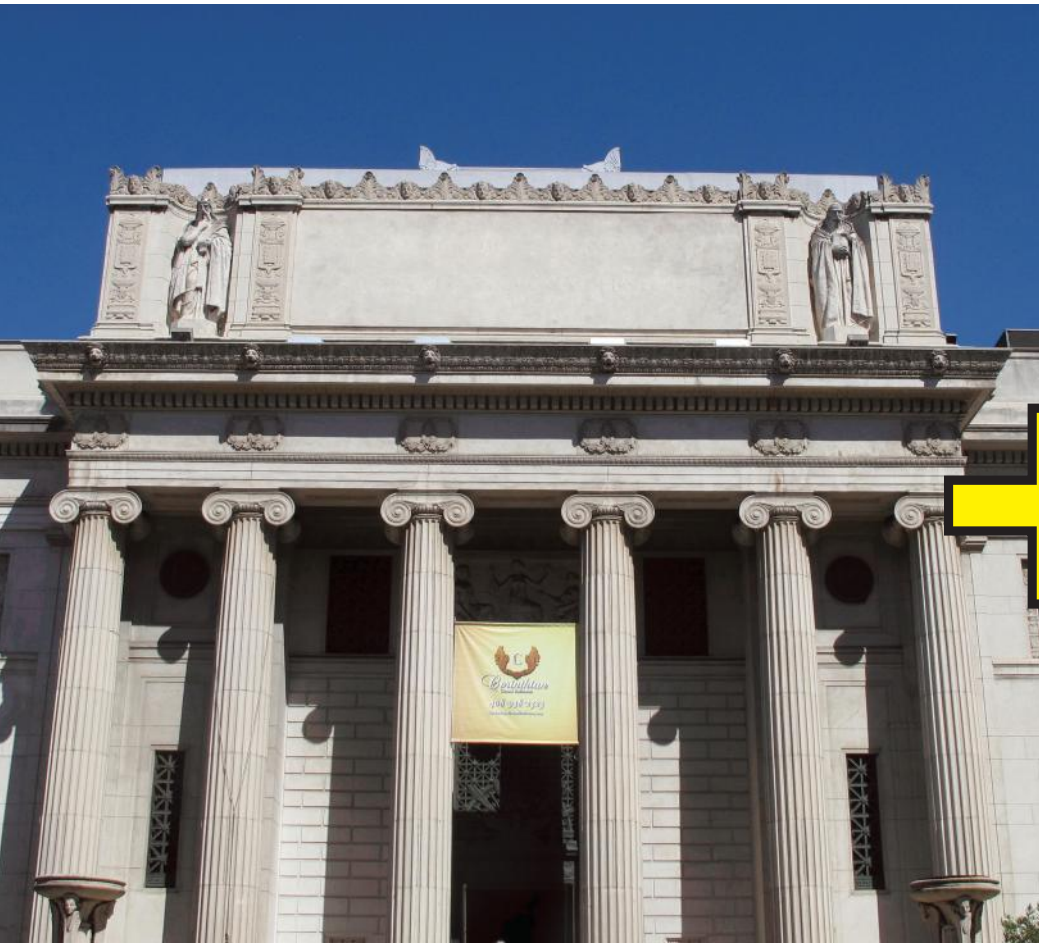


N 1st St

N 3rd St

E St John St







ST. JAMES
PARK
150TH
ANNIVERSARY

ST. JAMES
PARK
150TH
ANNIVERSARY



CELEBRATE

TREE CANOPY



E St James St

N 1st St

N 3rd St

E St John St



ACTIVATE

CONTEMPORARY CORE

E St James St

N 1st St



N 3rd St

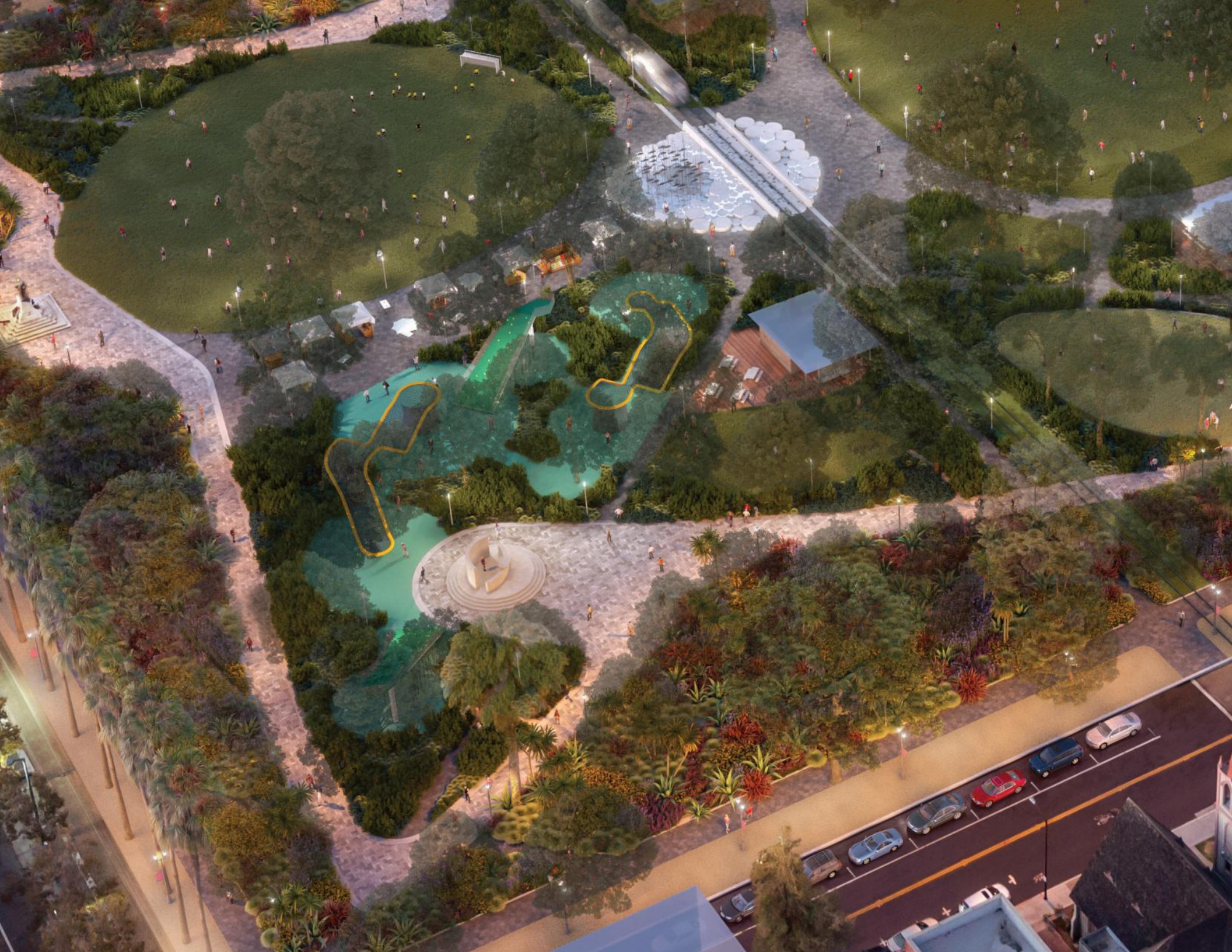
E St John St











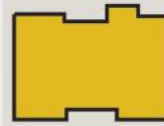
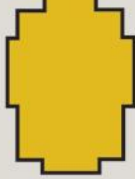




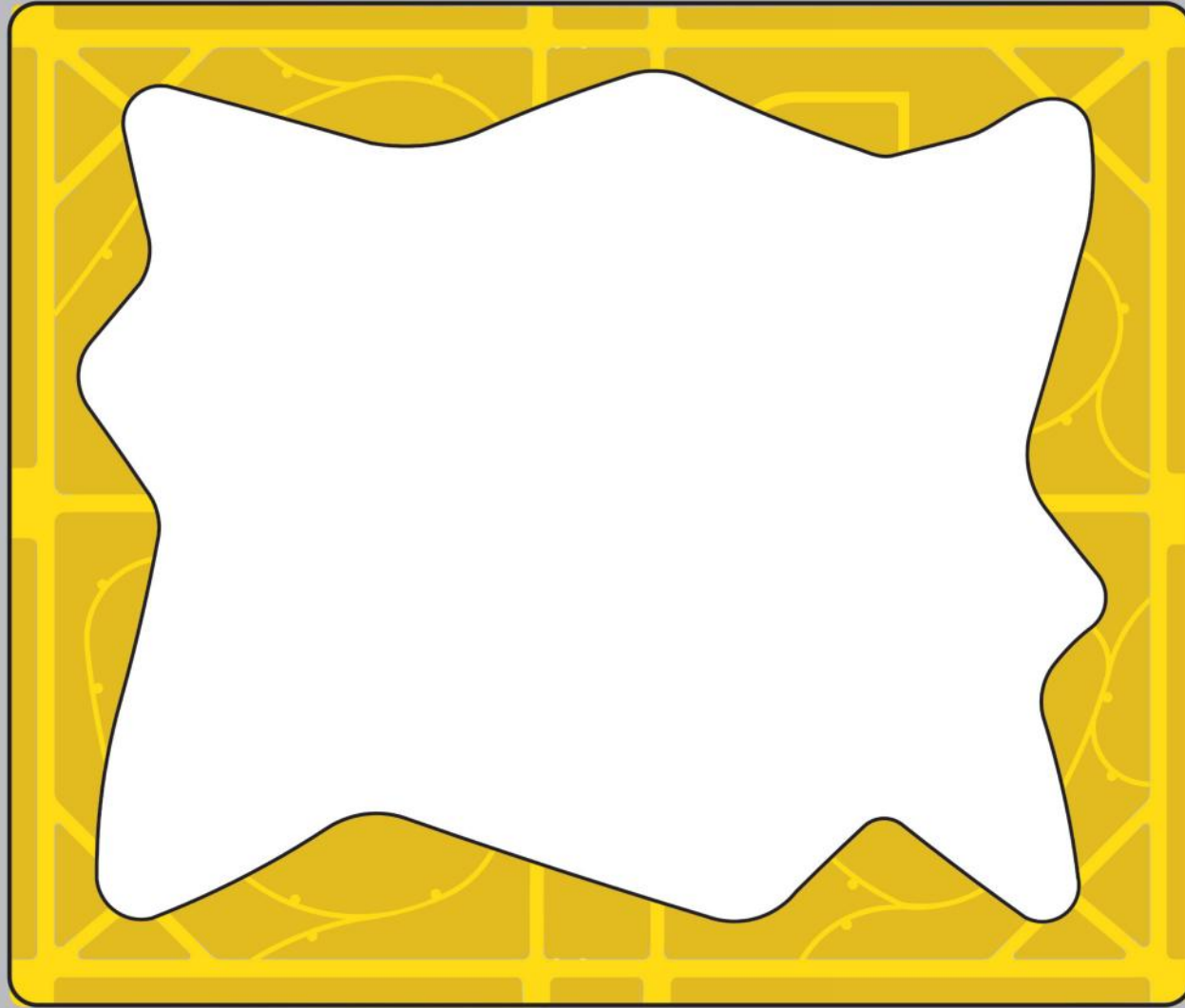




CELEBRATE



E St James St



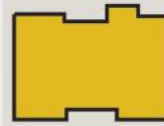
N 1st St

N 3rd St

E St John St



ACTIVATE



E St James St



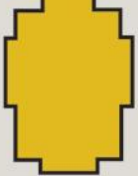
N 1st St

N 3rd St

E St John St



INTEGRATE



E St James St



N 1st St

N 3rd St

E St John St



ST JAMES PARK

E St James St

N 1st St

N 3rd St

E St John St



WHAT'S NEXT?

SUMMER 2017

Park Activation

Community Mtgs



MONUMENT WALK



DOG PARK



SPLASH PAD



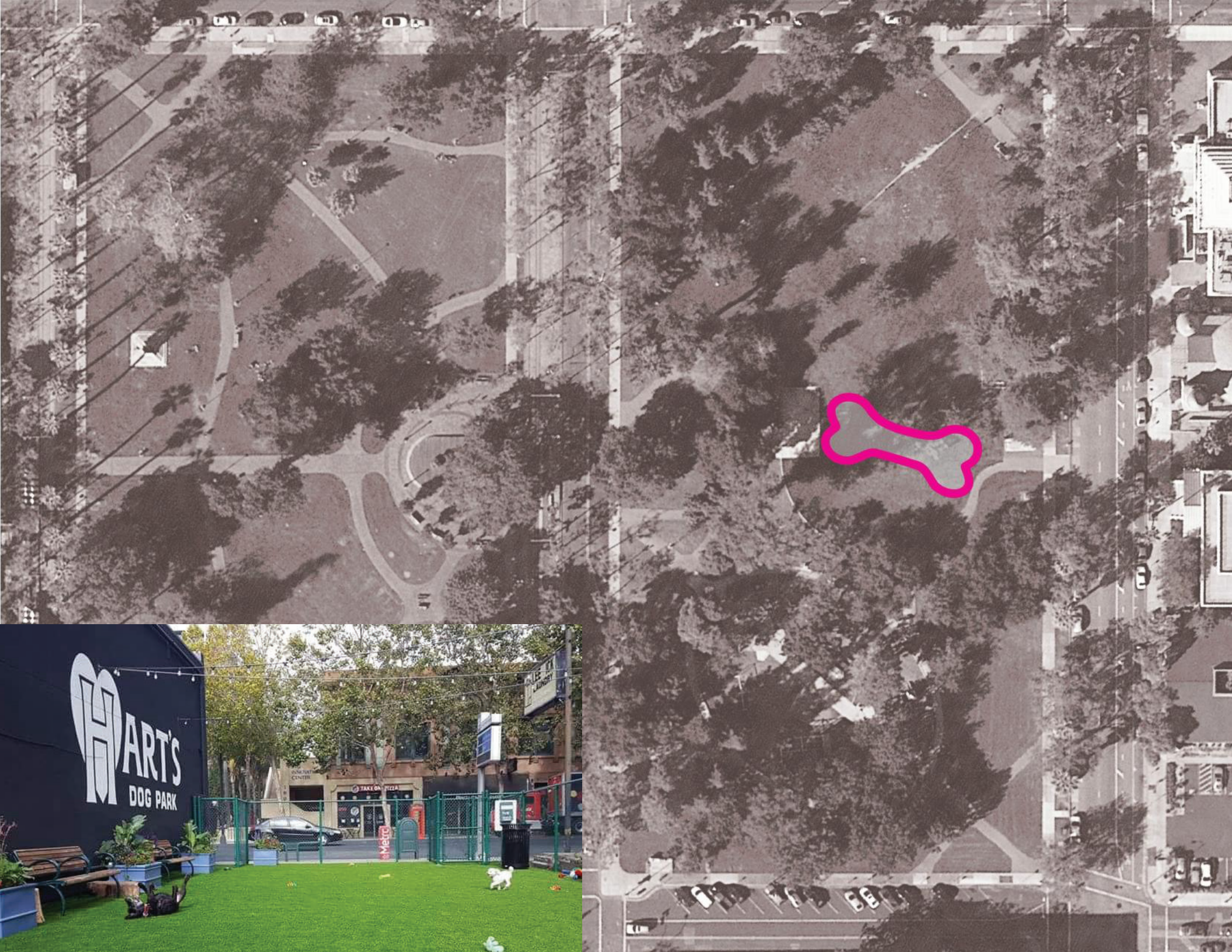
VICTORIAN GARDENS

An aerial photograph of a park area. A new path is highlighted with a thick pink line, starting from the top right and curving around the right side of the park. An existing path is marked with a series of yellow dots, forming a large loop around the perimeter of the park. The park contains several trees, a paved area, and a parking lot at the bottom. The text "NEW PATH" is overlaid in white capital letters on the pink line.

NEW PATH





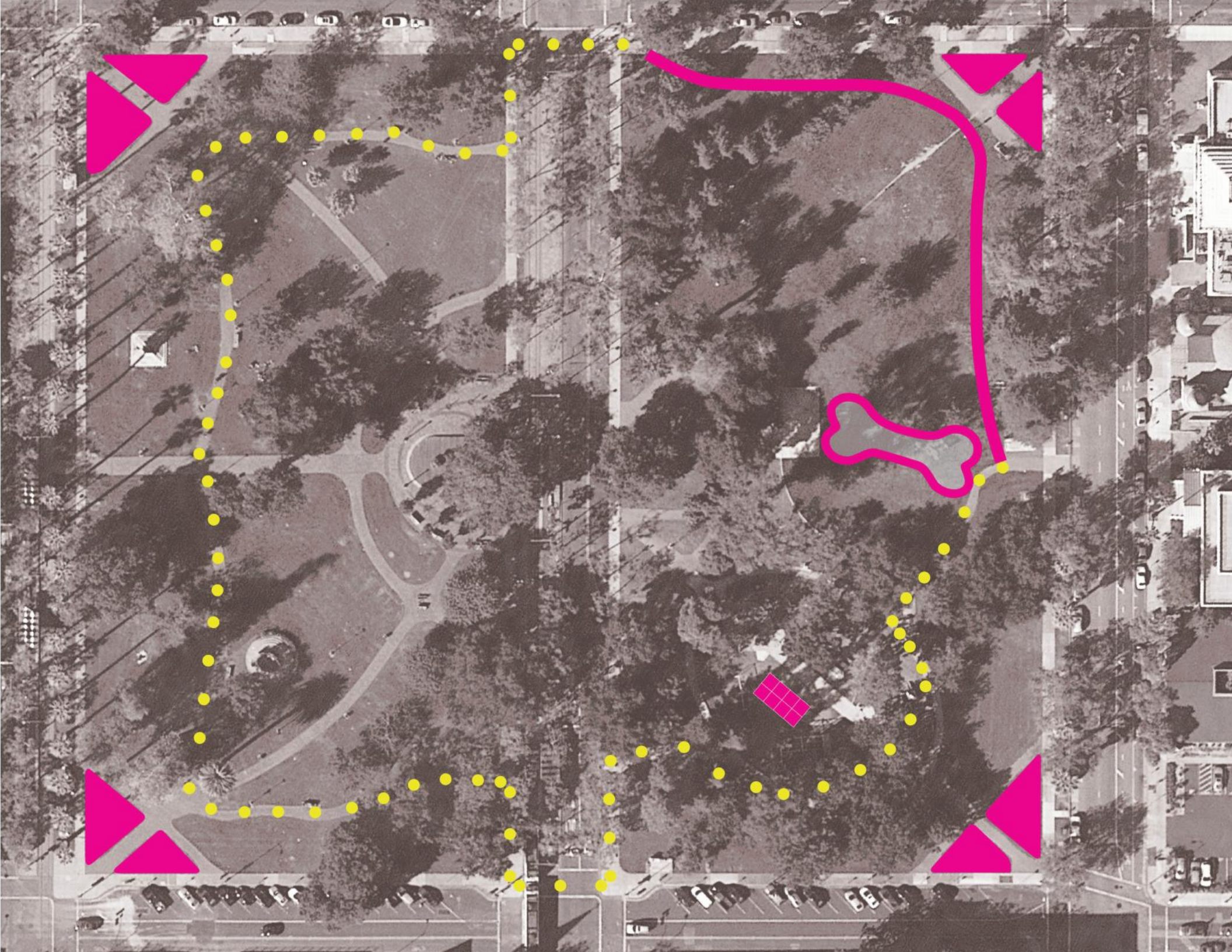












WHAT'S NEXT?

FALL - WINTER 2017

Concept Design

Schematic Design

SPRING 2018

Phasing Plan