

SPUR

Ideas + Action for a Better City

learn more at SPUR.org

tweet about this event:

@SPUR_Urbanist

#WalkThisWay

Community-Initiated Improvement Efforts @ 880 Underpasses

Savlan Hauser, Executive Director
Savlan@JackLondonOakland.org





“Whoever designed the Nimitz freeway should be taken out and shot if they’re not already dead”.

-Anonymous, longtime Jack London Resident

A COMPLETE MAP OF OAKLAND.
RESPECTFULLY DEDICATED TO THE CITIZENS OF OAKLAND,
By J. Kellersberger, Surveyor.



Kellersberger Grid



State Route 17, Precursor to Nimitz/ I-880

History



Pre- 1945



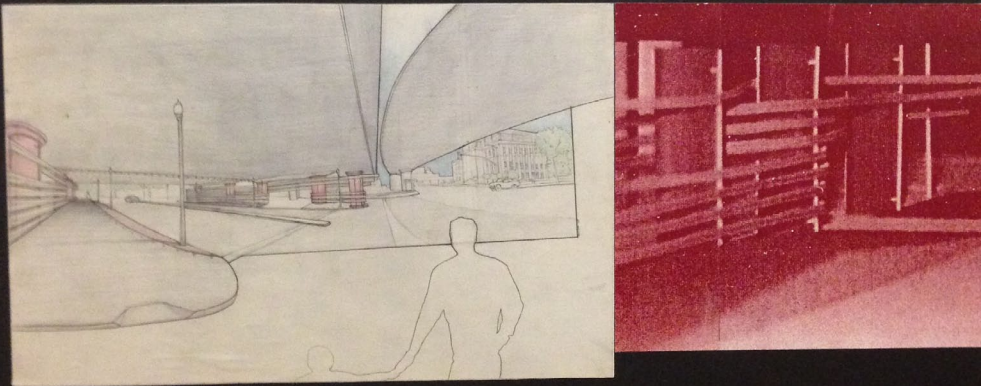
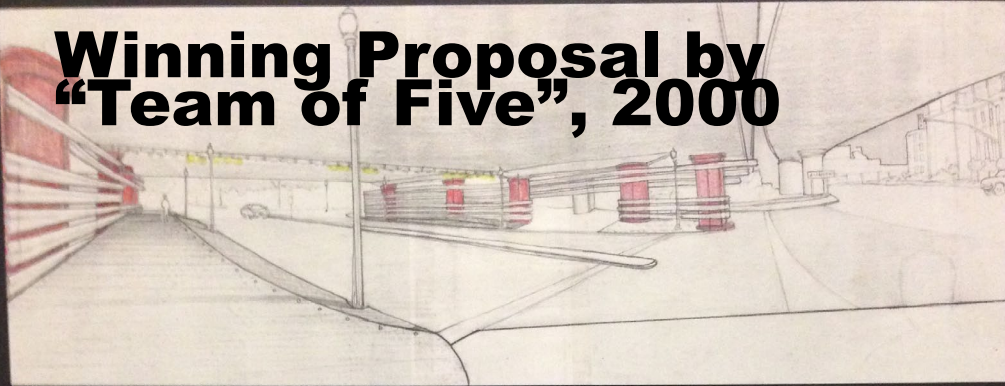
2016



Urban Damage



**Winning Proposal by
"Team of Five", 2000**



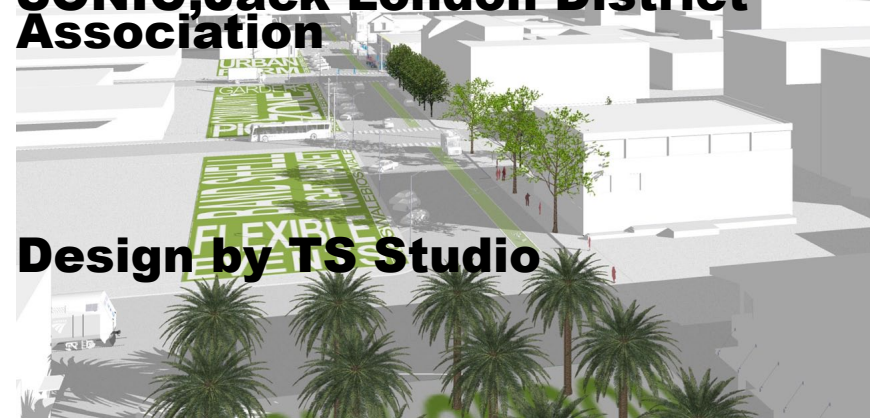
Attempted Repair through Public Art

**Adopt-A-Spot
Gateway Litter
Pickup
Visit Oakland**



Webster Green

**Envisioned by Community Groups
SONIC, Jack London District
Association**

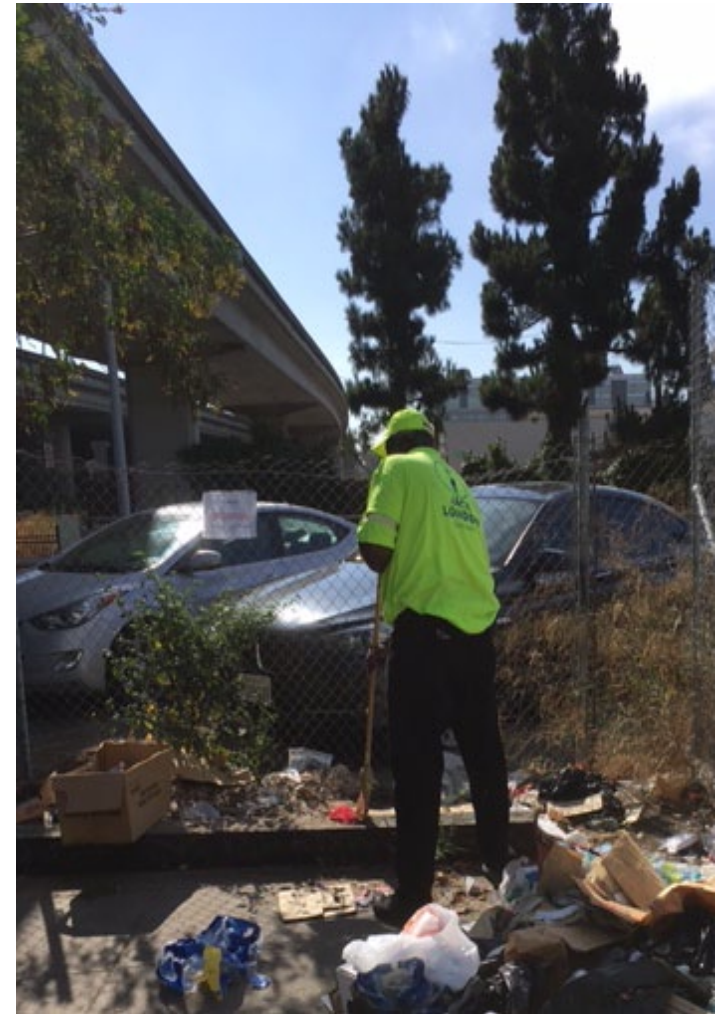


Design by TS Studio

**Community Workshops
Town Hall Meetings**



Community Wants Action



District Day-to-Day Services

THE SESSION



Community Workshop

ASPIRATIONS

community social luminous *luminous* *luminous*
welcoming balanced flow *flow*
fun connected *connected* *bright*
authentic incubator space
active



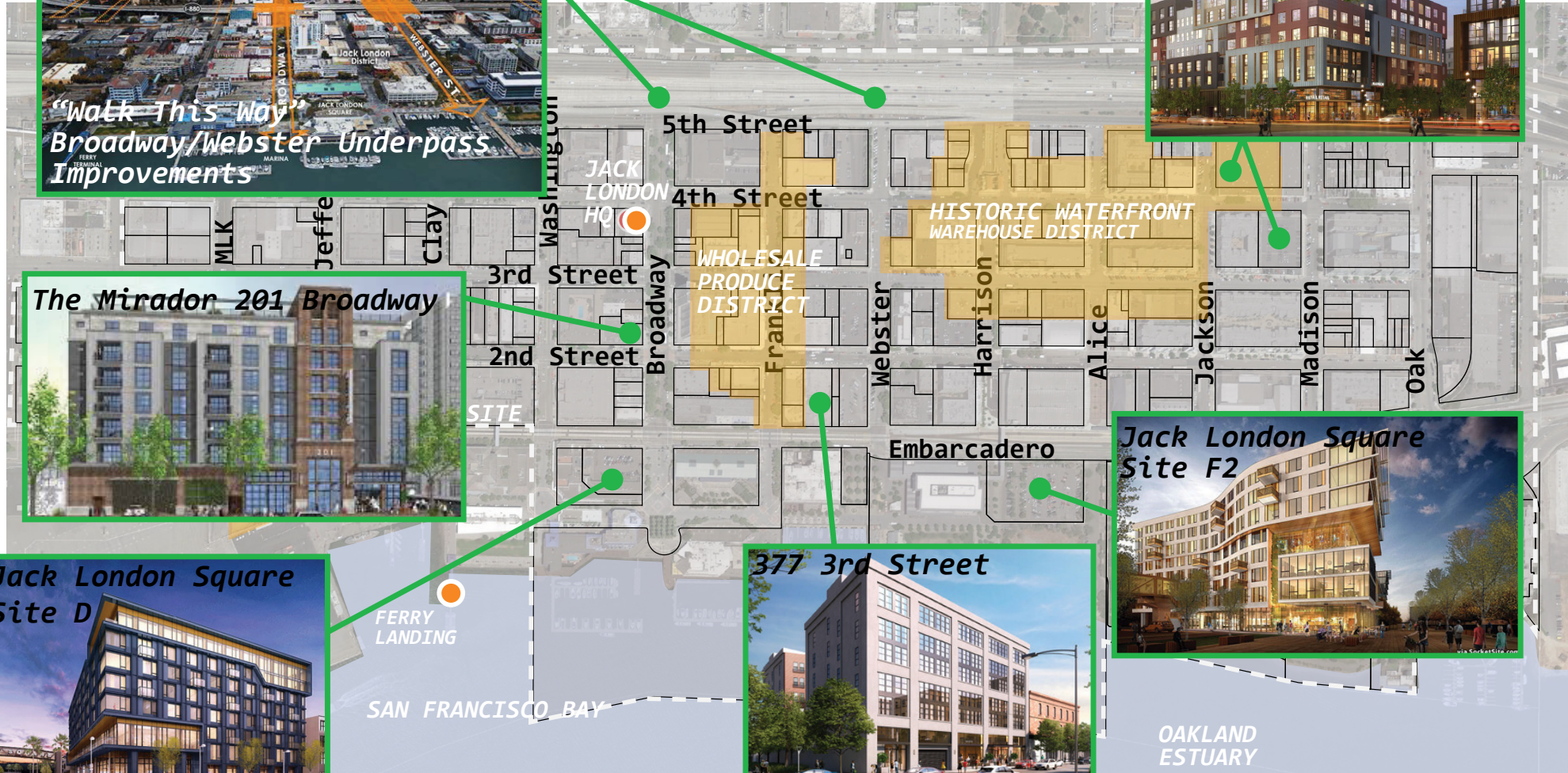
storytelling
safe *engaging*
dynamic people
transitional continuity
movement *interactive* *gateway*



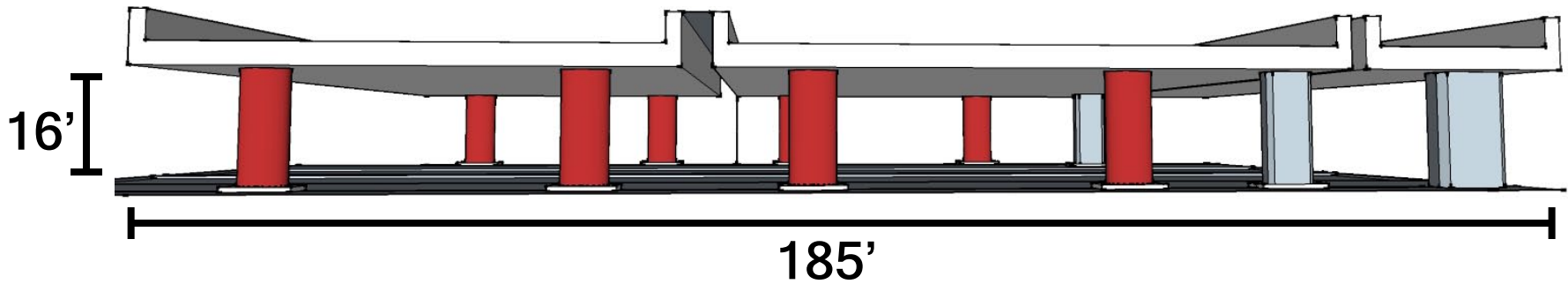
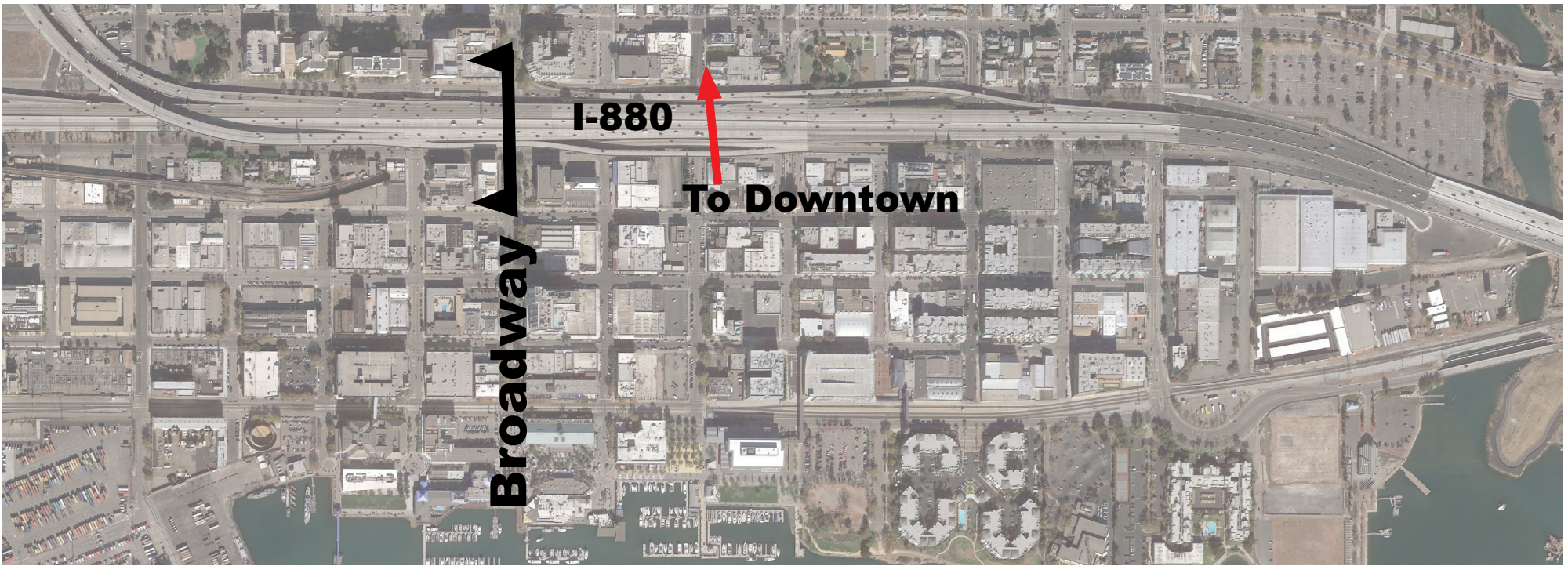
Community Workshop



Justification for Investment in Connection



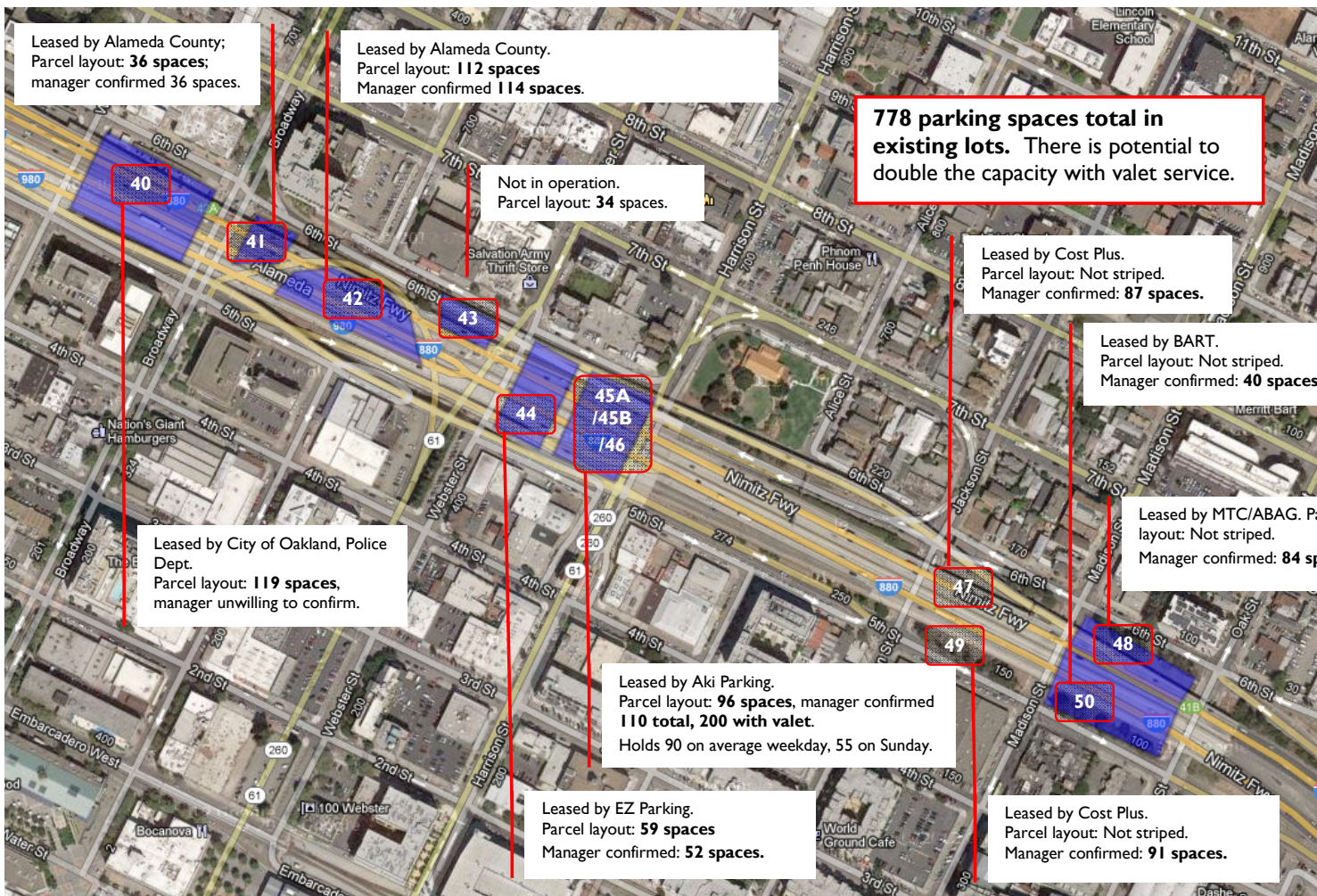
Justification for Investment in Connection



Context Challenges- Cross Section at Broadway



Context Challenge- Encampment Crisis



Map of tenants and leases by Arly Cassidy, Transform



JACK LONDON
OAKLAND™



Context Challenges- Layers of Responsibility



Intervening at Bi-Annual Caltrans Parcel Auction

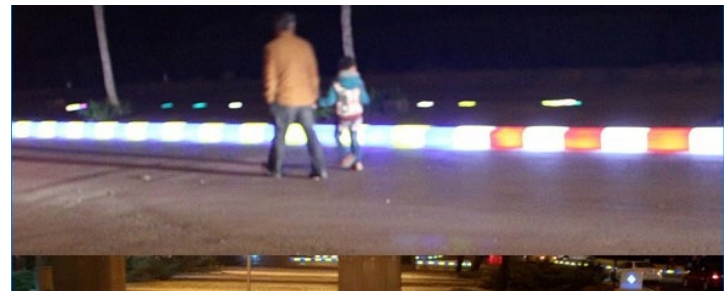
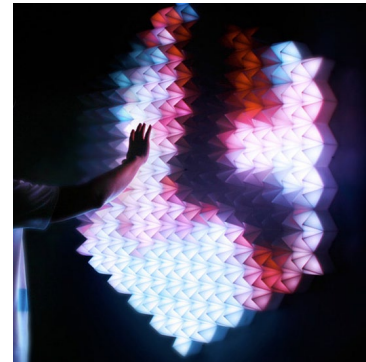


SOMA StrEat Food Park Under Highway 101



Oakland Police Department Washington Under I-880

Context Challenges- Creative Uses are Illegal



Rapidly Implementable Activation

Thank You

Savlan Hauser, Executive Director
Savlan@JackLondonOakland.org



Walk this Way! The Broadway/Webster Project

Christina Ferracane

City of Oakland, Planning and Building Department

Three fantastic, walkable neighborhoods lie adjacent to each other



Old Oakland

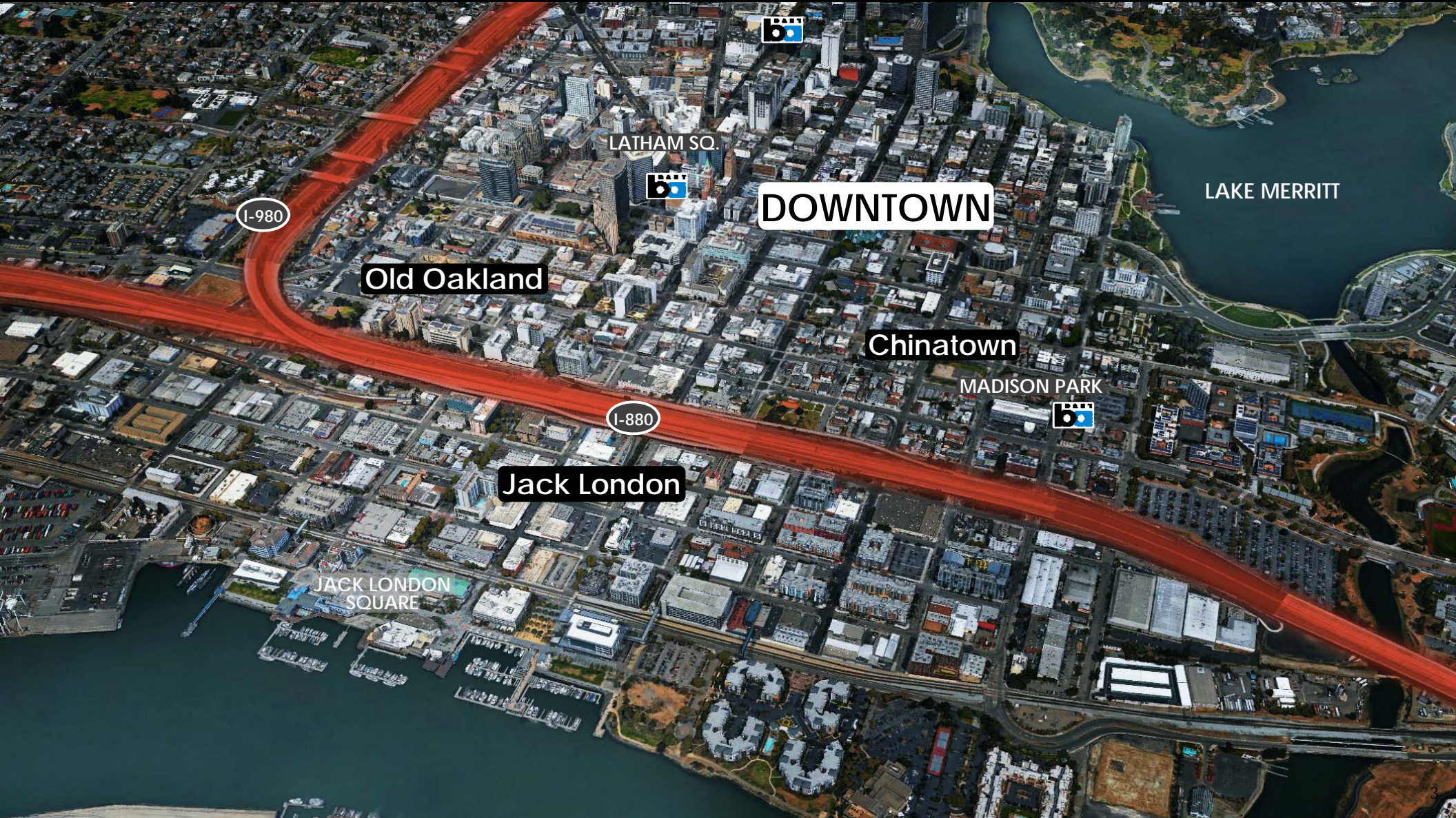


Chinatown

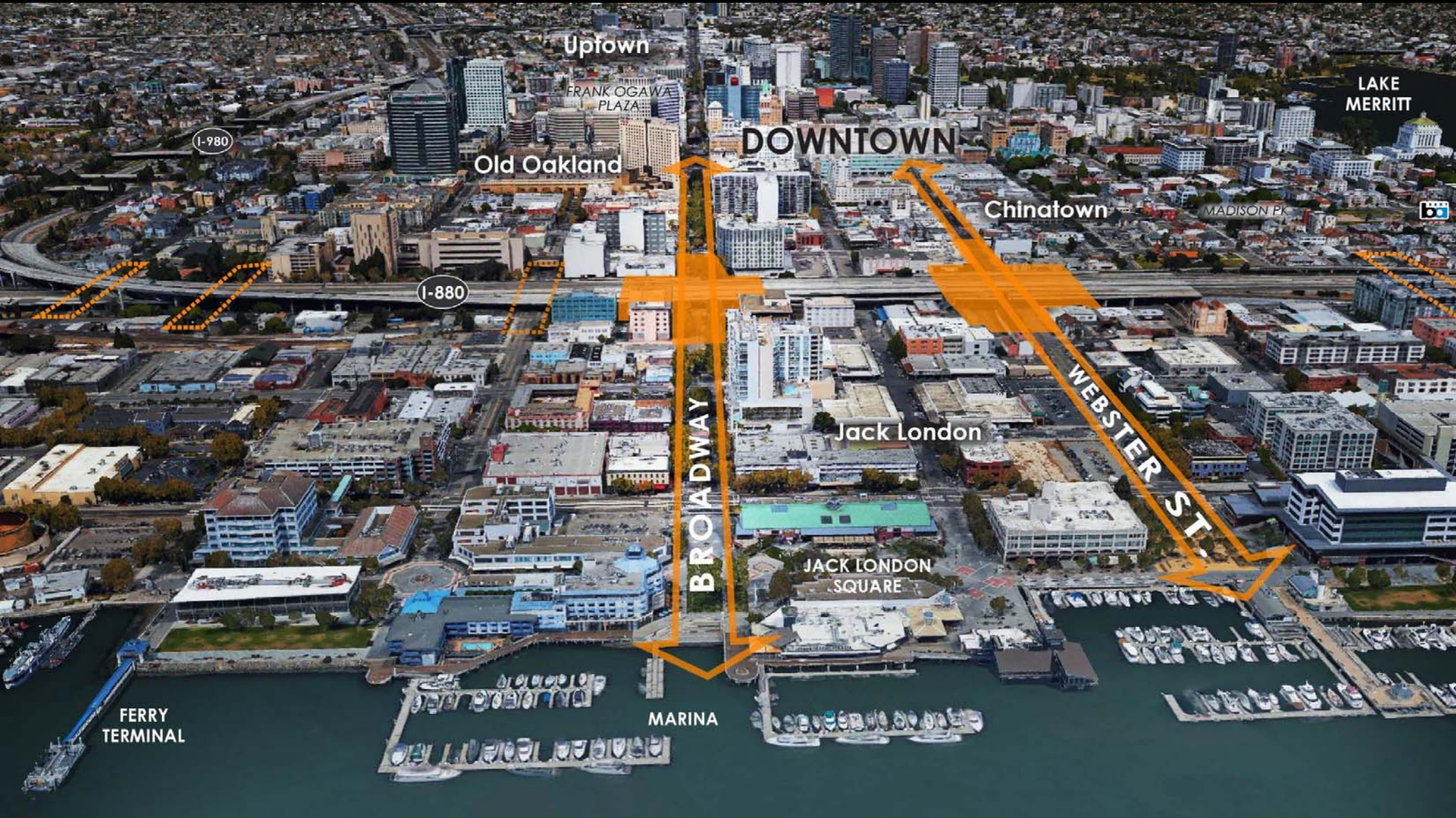


Jack London

But they are severed from one another by I-880



Call for Proposals: Transform the areas under, around and through Broadway and Webster Street Underpasses



Oakland is a city of underpasses



RFP Scope

MULTI-DISCIPLINARY TEAMS:

- Urban Design
- Landscape Architect
- Transportation Engineer
- Sound Expert
- Public Engagement Expertise
- Structural Engineer
- Lighting Designer
- Environmental

SCOPE:

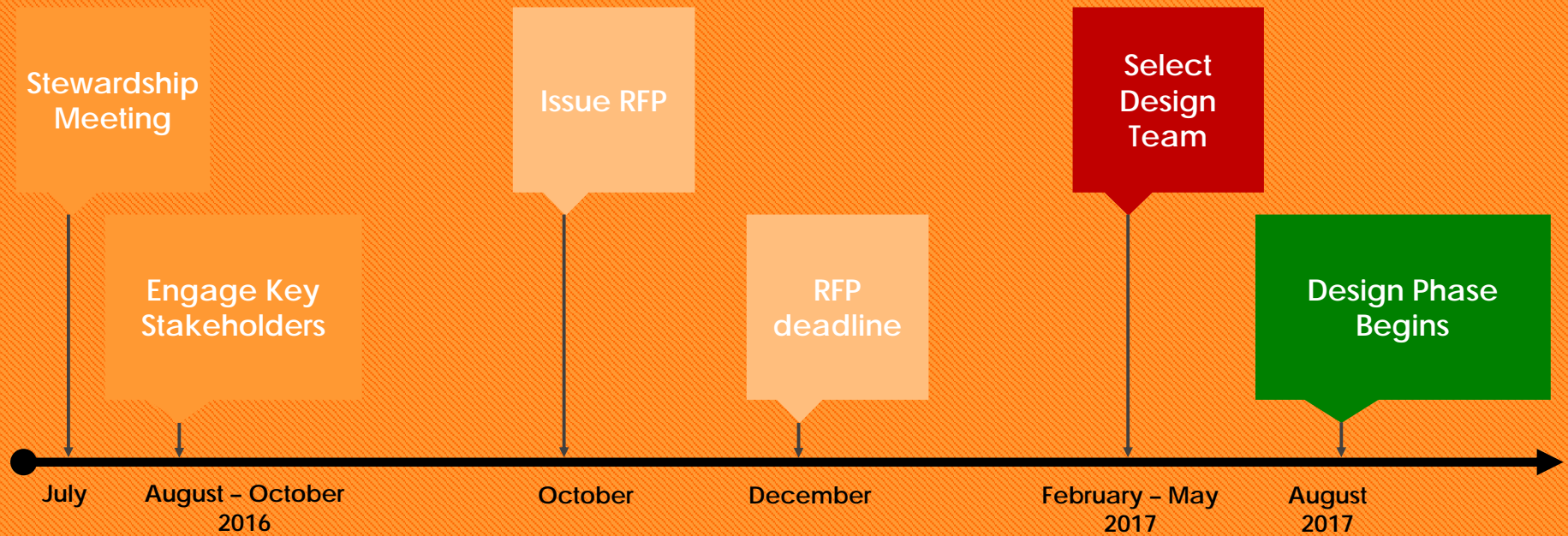
Will complete 2 phases of design:

- 1**
 - Detailed design drawings for Broadway and Webster St.
 - Toolkit for other I-880 underpasses
 - Community engagement
 - Construction drawings (35%)

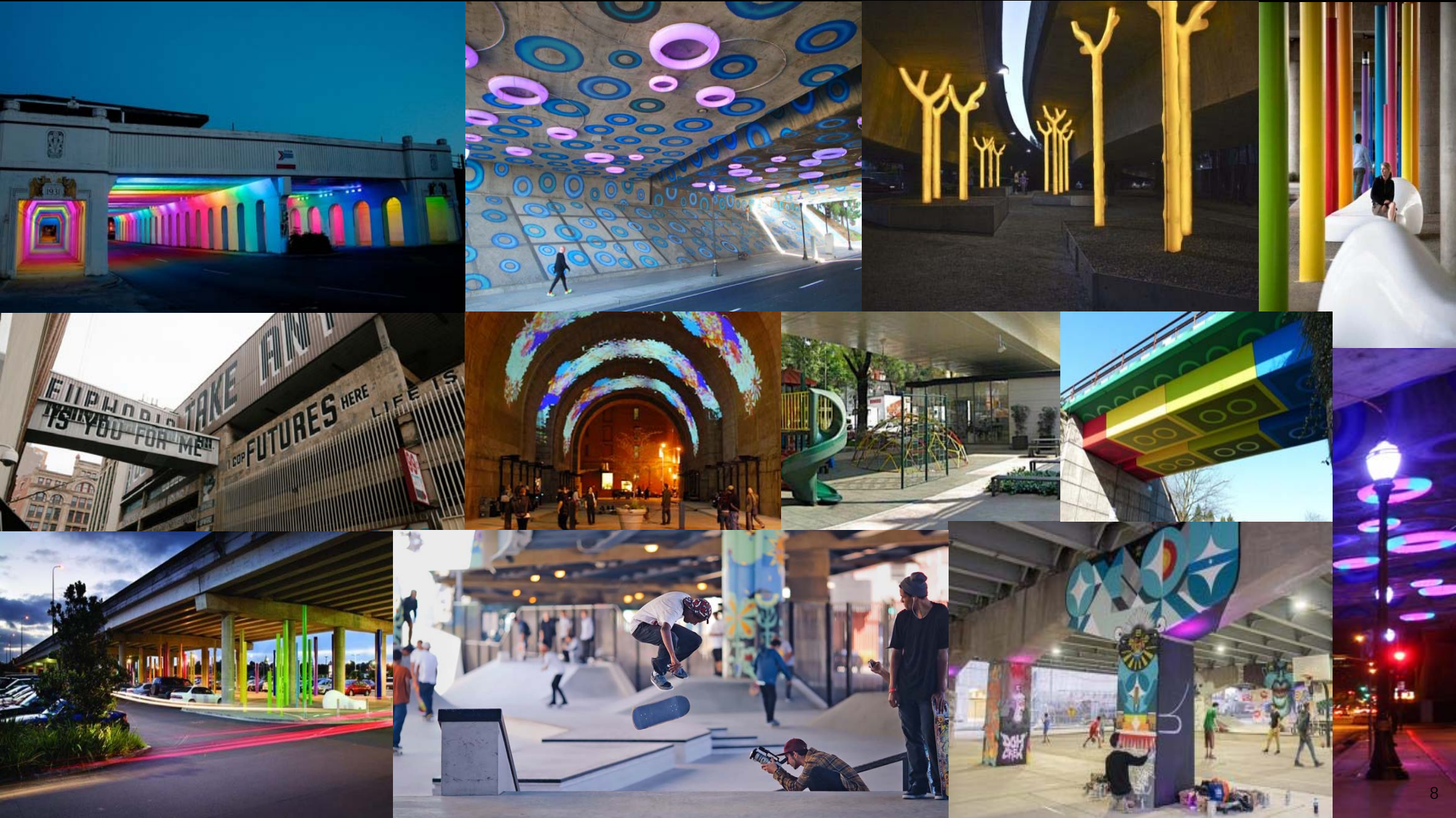
➔ Formulate budget and pursue funding

- 2**
 - Construction documents for bidding (100%)

Timeline



Transforming Broadway and Webster into gateways is possible



Birmingham, Alabama



Lighting can enliven low horizontal spaces

National Gallery underground tunnel, Washington D.C.



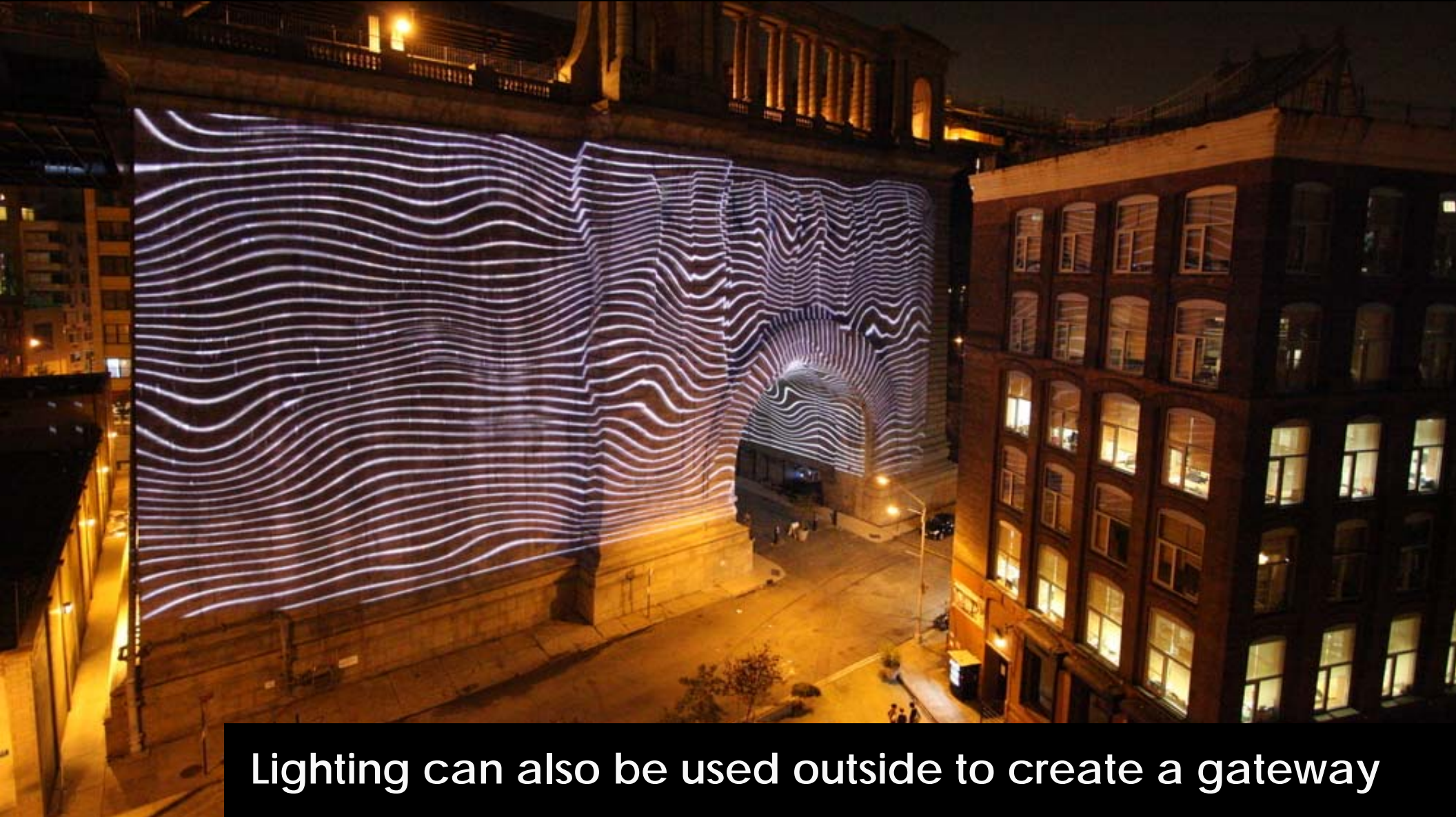
Lighting can enliven low horizontal spaces

San Jose, California



Lighting can enliven low horizontal spaces

Brooklyn Bridge anchorage tunnel, NYC



Lighting can also be used outside to create a gateway

Sydney, Australia



Simple interventions can reimagine dull spaces.

Philadelphia, Pennsylvania



Projections can activate dark spaces

Chicago, Illinois



Interventions can turn unsafe spaces into inviting ones

Seattle, Washington



Interactive sculptures can be fun for communities and visitors

Glasgow, Scotland



Interventions can expand beyond the space below underpasses.

Auckland, New Zealand



Color and furniture create a pedestrian-friendly passageway

DUMBO, Brooklyn, NY



Wayfinding and signage welcome you into a neighborhood

Melbourne, Australia



Underpasses can be reclaimed for recreation

Philadelphia, Pennsylvania



Murals, signage and public art can draw people in

Wuppertal, Germany



Murals, signage and public art can draw people in

Academy of Art University – Chau Ngo



Academy of Art University – Chau Ngo



UC Berkeley – Rebecca Coleman

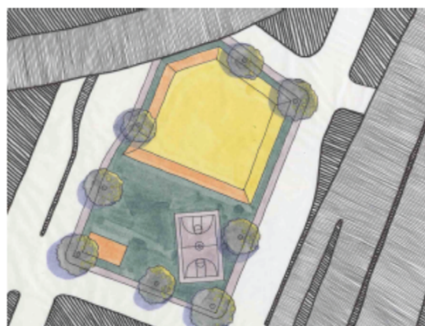
SERVICES

Resource Center for Homeless Residents



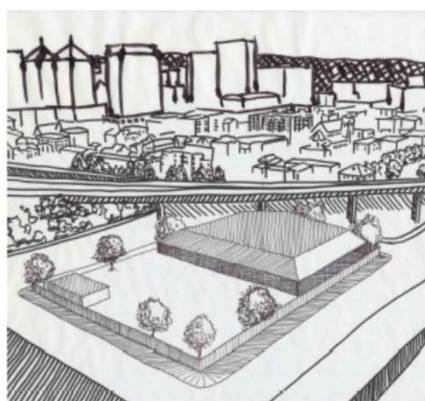
Existing Conditions

The existing site is a **vacant, city-owned** patch of grass surrounded by chainlink fencing. At last count, **20 homeless households** were situated adjacent to and across from this site.



A Protected Space

The center will consist of a **weather-resistant canopy** over half the site, a personal storage space, an outdoor recreation area, and clean and safe **showers, bathrooms, and laundry facilities**.



Resource Provision

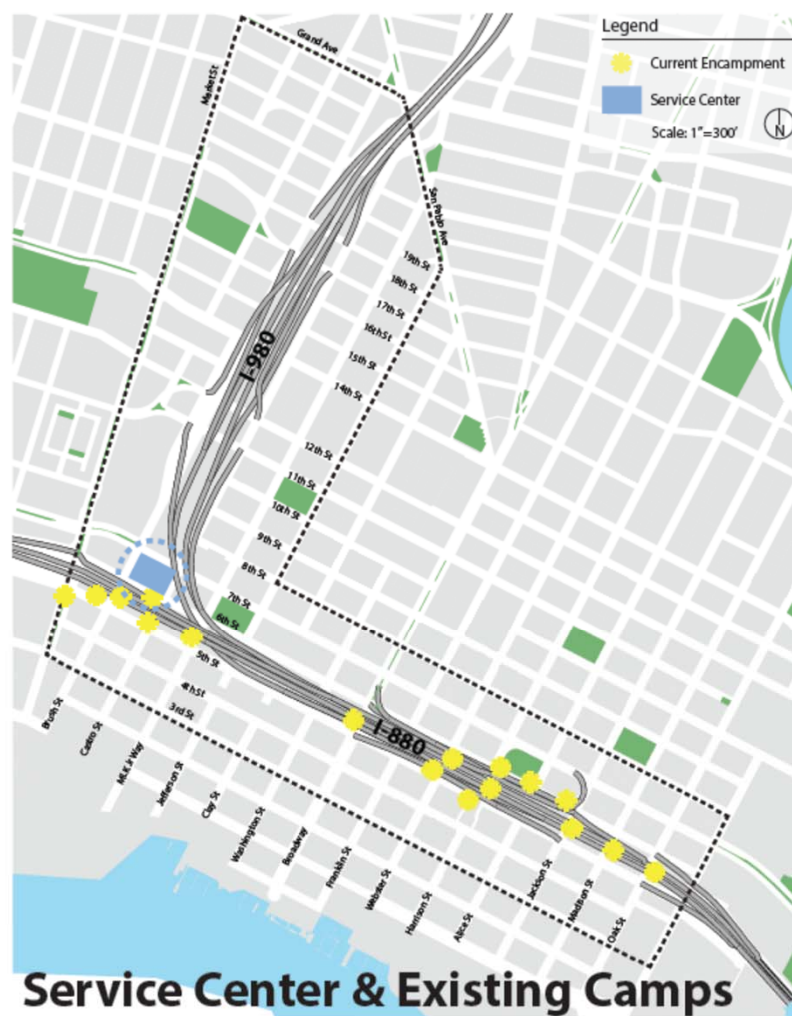
Amenities at the service center are based on needs determined from interviews conducted with area homeless residents:

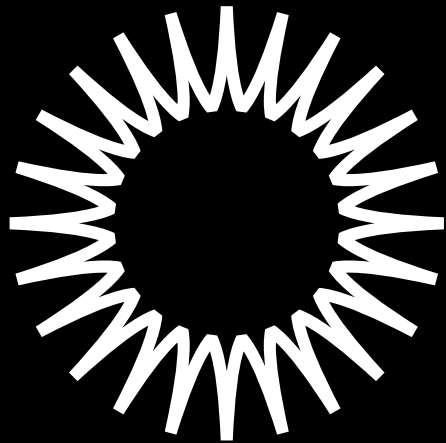
- Basic **medical resources** and **needle exchange**
- Clean **showers, bathrooms, and laundry facilities**
- Lockers for **secure storage** of personal belongings
- Regular **trash collection**
- On-site **social workers and legal counselors**



Interim Connections

Roughly **90 homeless households** live under and around I-880. **Plans to redesign** the corridor risk **displacing** them. A service center addresses that risk while **permanent housing** is being developed.





SPUR

Ideas + Action for a Better City
learn more at SPUR.org

*tweet about this event:
@SPUR_Urbanist
#WalkThisWay*