

A Greater Great America Station

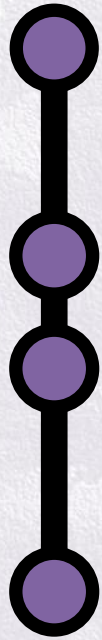
Bridging Past, Present, and Future in North Santa Clara



Lee Butler, City of Santa Clara
Melissa Cerezo, VTA
Corinne Winter, ACE



Roadmap



TRANSPORTATION & LAND USE HISTORY

FUTURE LAND USE CHANGES

FUTURE TRANSPORTATION VISION



CHALLENGES & OPPORTUNITIES

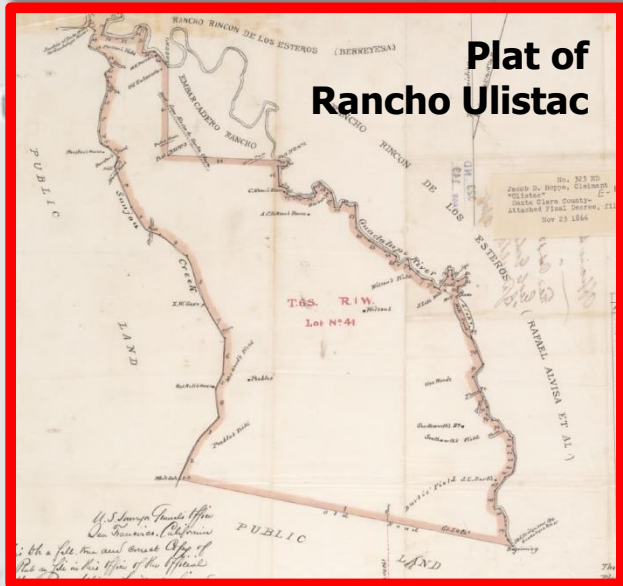
1845

★ Port of Alviso

★ Future Site of Great America Station

★ Mission Santa Clara

★ San Jose



EXTRA.
 HERALD OFFICE, 6 P. M.
EXPLOSION
 OF THE
STEAMER JENNY LIND!!!
AWFUL DESTRUCTION OF LIFE!

We have just received the following bulletin from A. J. us & Co's Express, and hasten to lay it before the public. We will publish full particulars in an extra as soon as they come to hand:

The steamer Jenny Lind blew up at 2 o'clock this afternoon opposite the Red Wood Embarcadero. Sixty persons were killed and scalded. One man, calling himself Peter Smith, swam ashore on the marsh, saying the steamer was unmanagable, and wanted assistance to tow her up.

The Jenny Lind, after the explosion, drifted over to the other side of Bay. The schooner Milwaukie left Redwood Creek to go to the assistance of the sufferers, and Mr. Smith went in her.

We learn that Mr. James Tobin was on board, but escaped.

Immediate assistance from this city is urgently asked for.



Jacob Hoppe

1878

Alviso Station

Future Site of Great America

Agnew's Station (est. 1877)

Santa Clara Station

San Jose Station

Santa Clara Valley Railroad (est. 1874)

San Francisco San Jose Railroad (est. 1864)





1986

CA-237

Golf & Tennis Club

Convention Center

Future Site of Great America Station

Tasman Drive (Future)

Tasman Drive (Future)

Great America Park

Lafayette St

Mission College

Great America Pkwy



Google My Maps

ft

1991

CA-237

CA-237

Tasman Drive

Tasman

Tasman Drive

Lick Mill

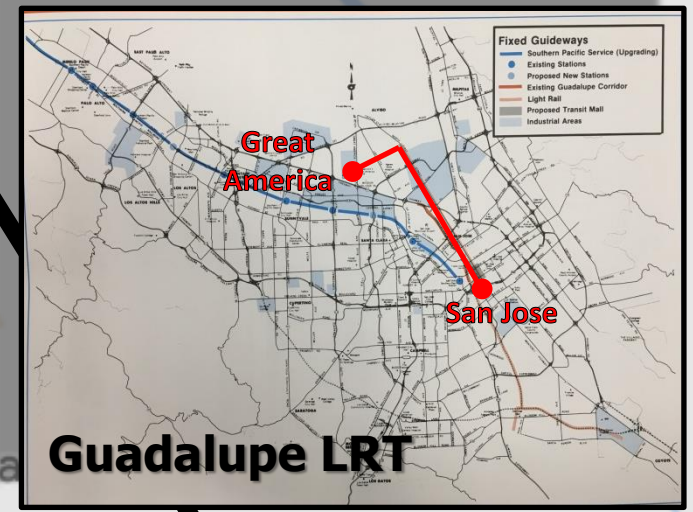
Champion

Old Ironsides

Great America

Lafayette St

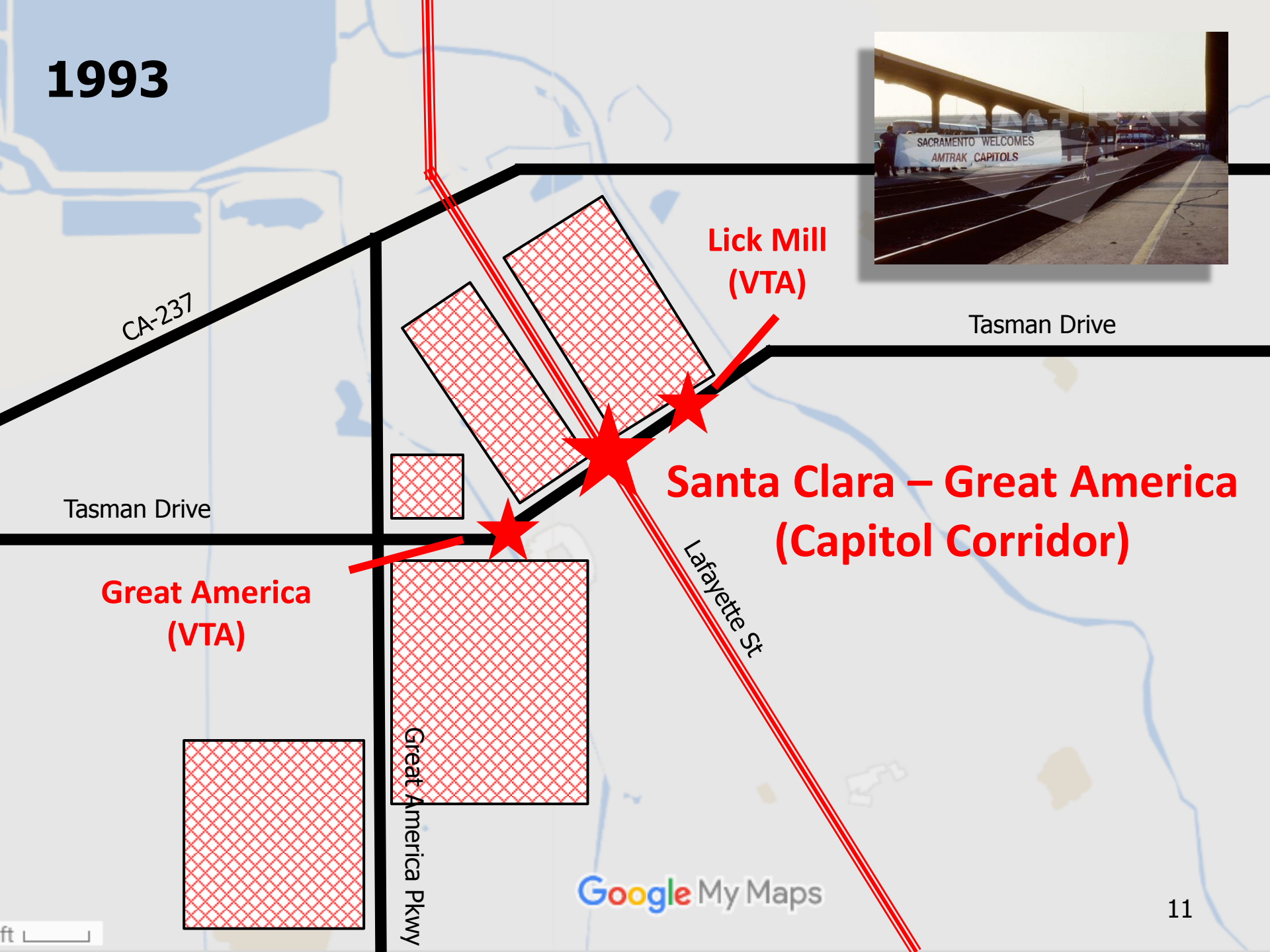
Great America Pkwy



Google My Maps

ft

1993

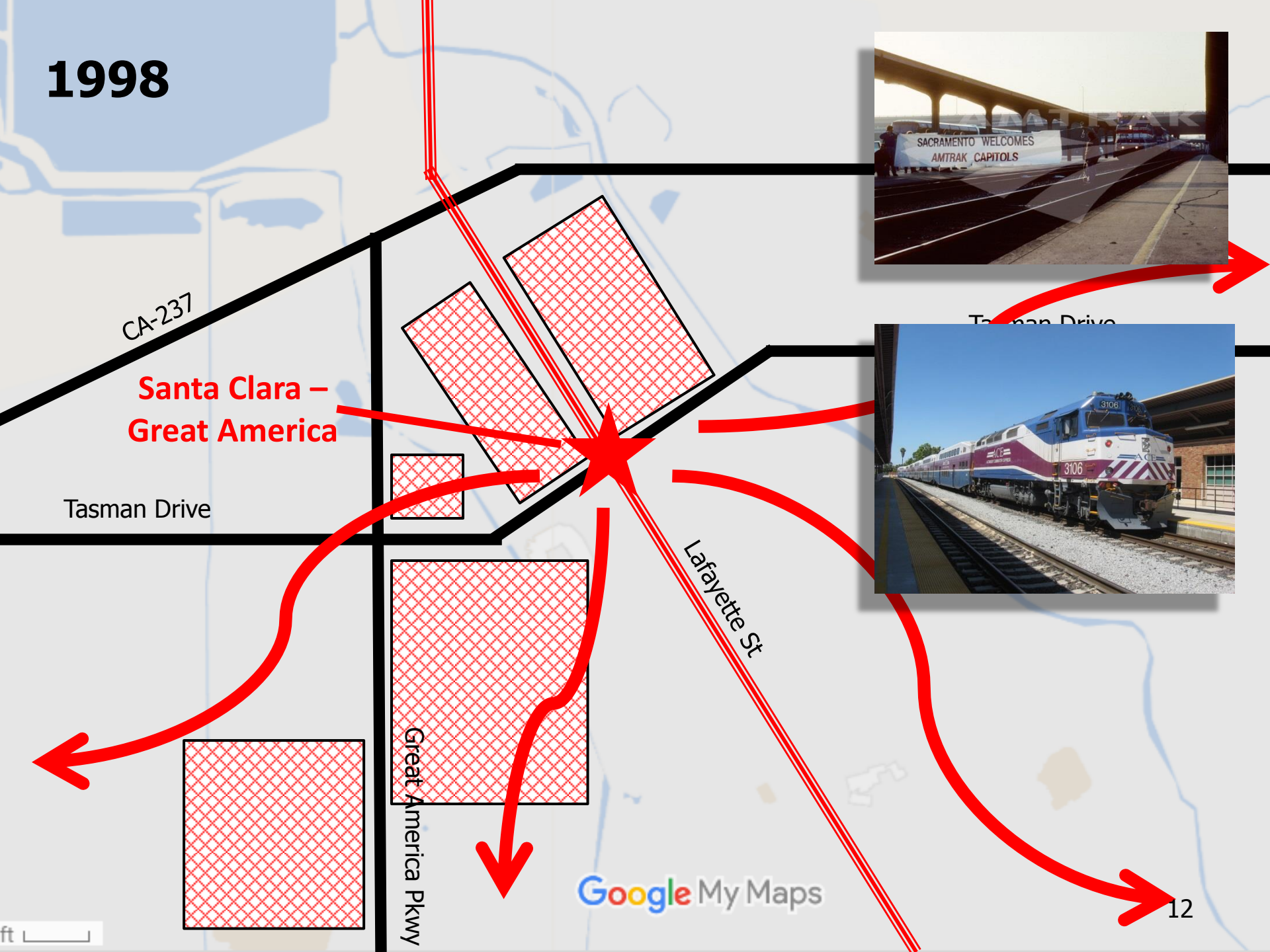


Lick Mill (VTA)

Santa Clara – Great America (Capitol Corridor)

Great America (VTA)

1998



CA-237

Santa Clara - Great America

Tasman Drive

Lafayette St

Great America Pkwy

Google My Maps



2004



Lick Mill (VTA)

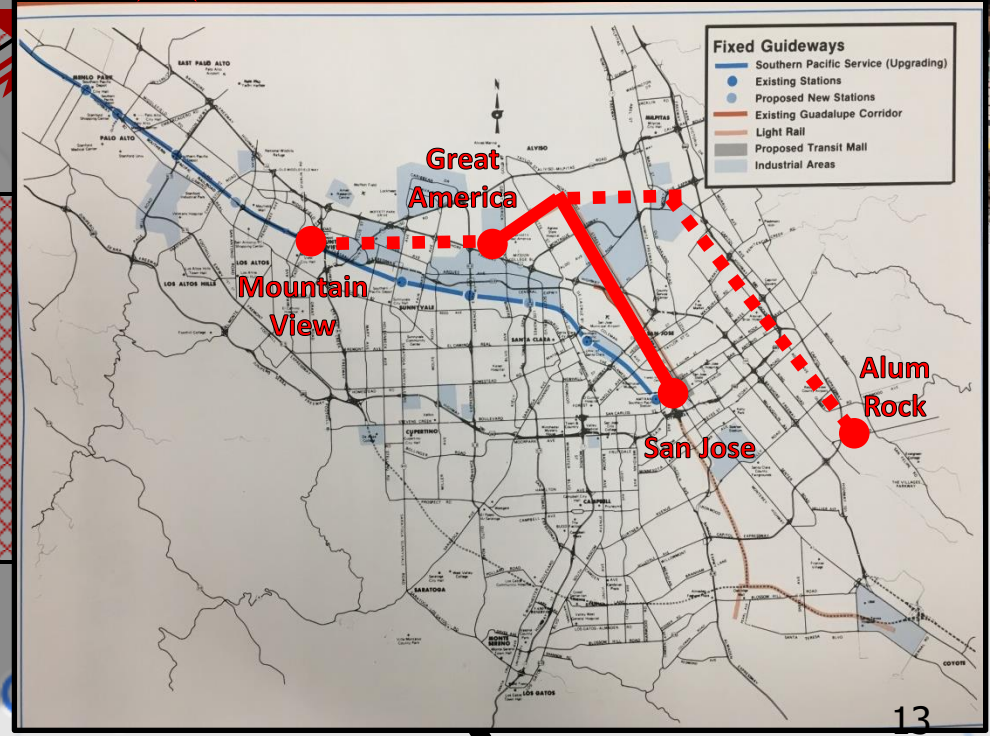
Santa Clara - Great America

Tasman Drive

Tasman Drive

Great America (VTA)

Great America Pkwy



**City
Place**

**Tasman
East**

**Levi's
Stadium**



Roadmap



TRANSPORTATION & LAND USE HISTORY

FUTURE LAND USE CHANGES

FUTURE TRANSPORTATION VISION



CHALLENGES & OPPORTUNITIES

Tasman / Great America / Lafayette



**Santa Clara –
Great America**

**Lick
Mill**

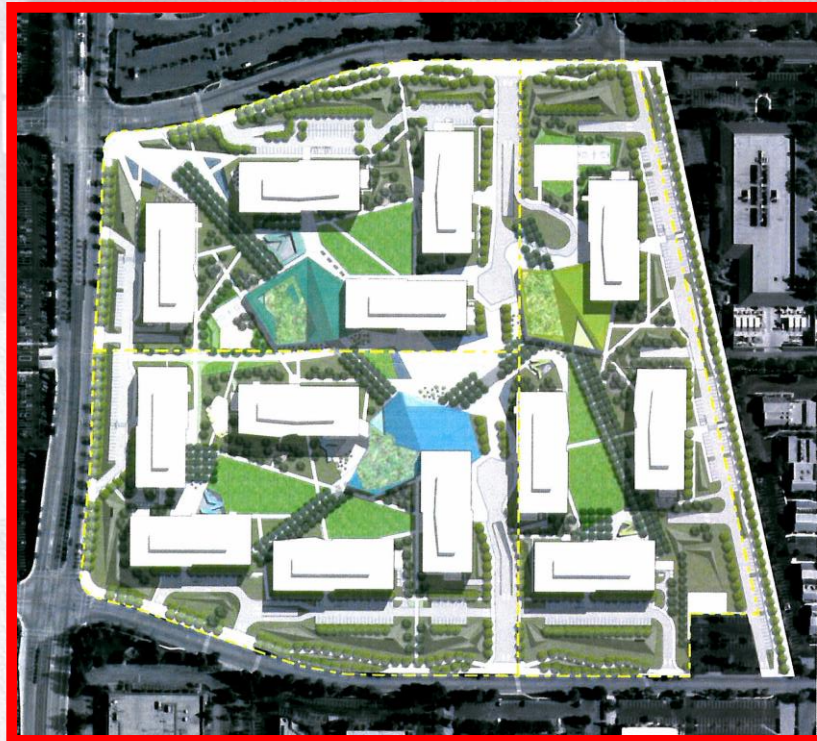
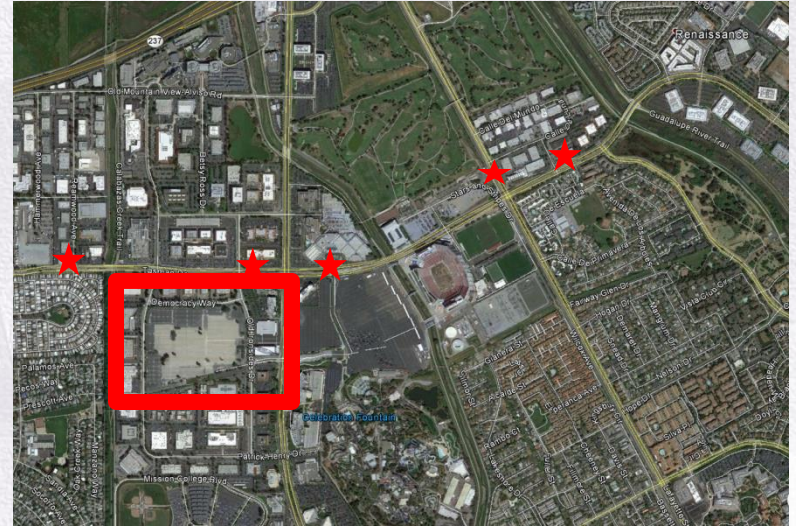
**Old
Ironsides**

**Great
America**

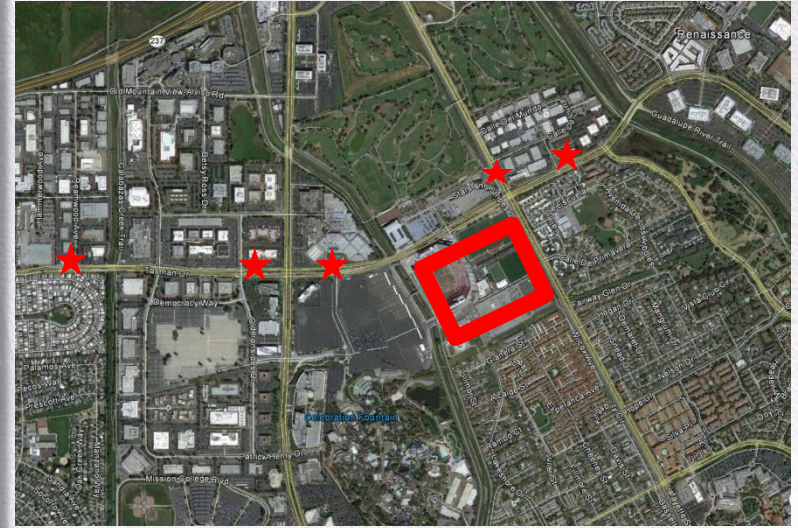
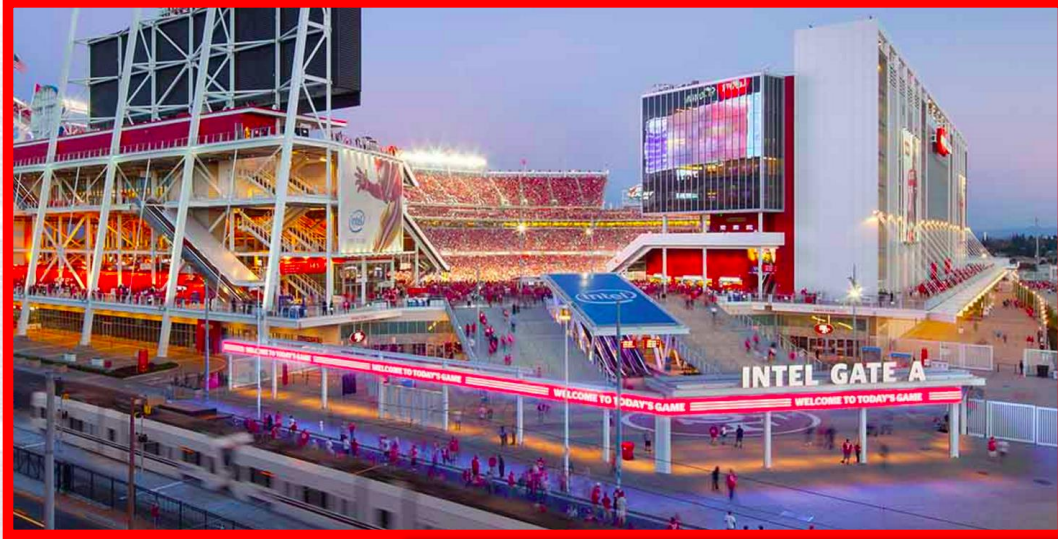
Reamwood

Celebration Fountain

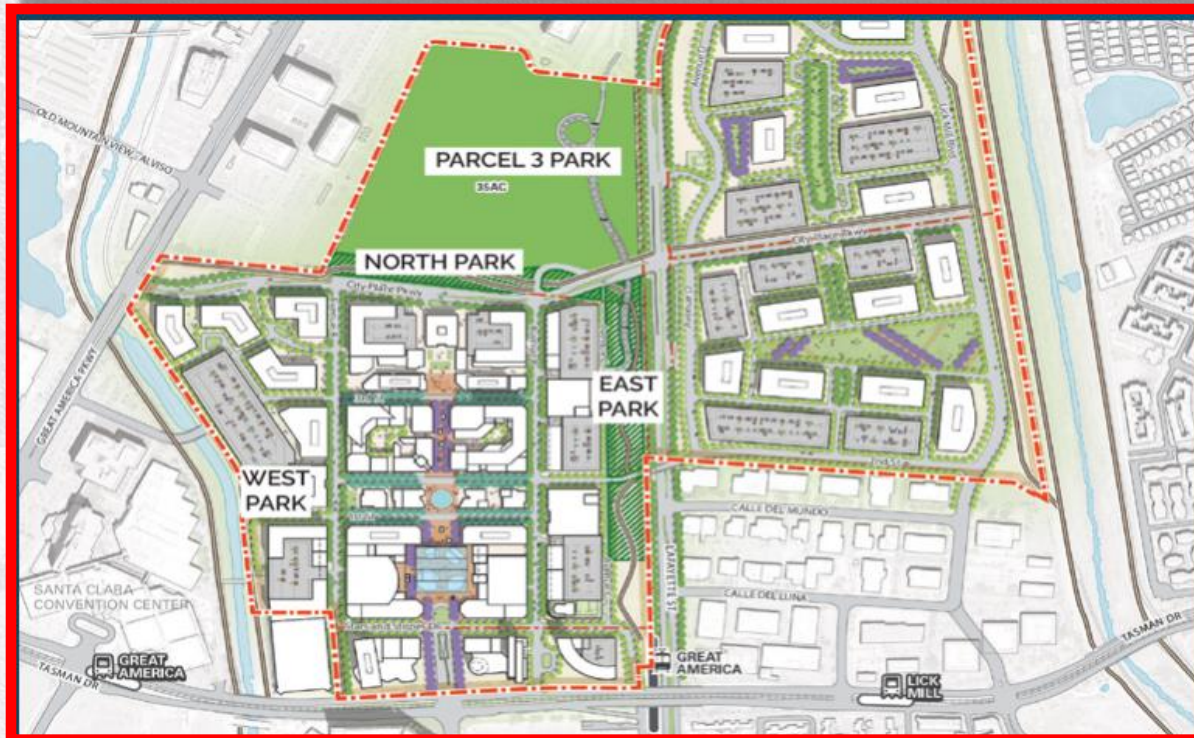
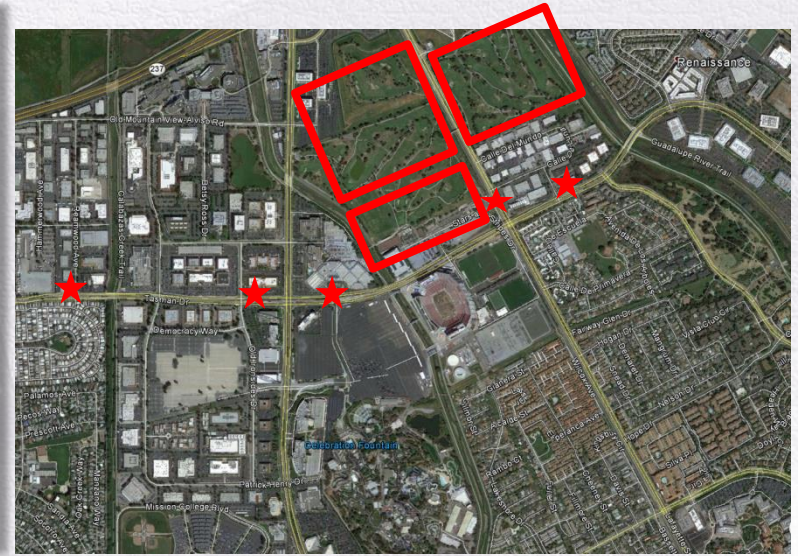
Le Eco (formerly Yahoo!)



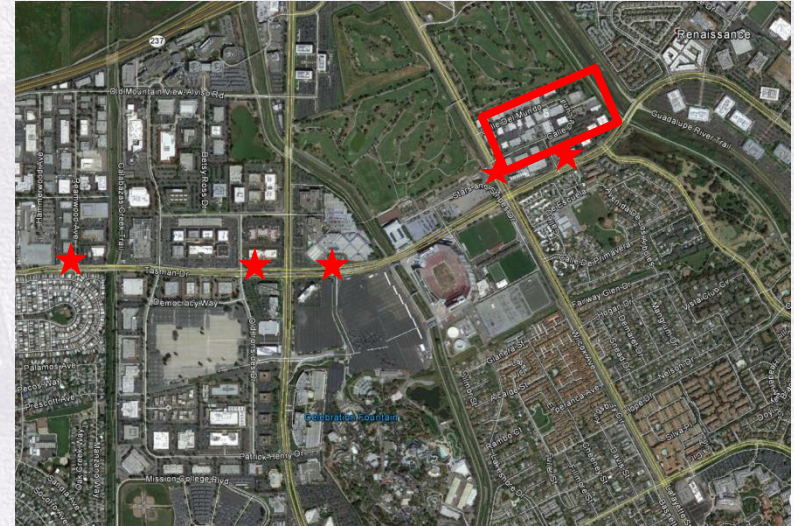
Levi's® Stadium



City Place



Tasman East



VISION SAFE AND ENJOYABLE WALKING EXPERIENCE

Paseos bring an opportunity to link people to the many destinations in and around the site without the cost of constructing new streets.

PASEOS BETWEEN BUILDINGS



SAFE AND ENJOYABLE

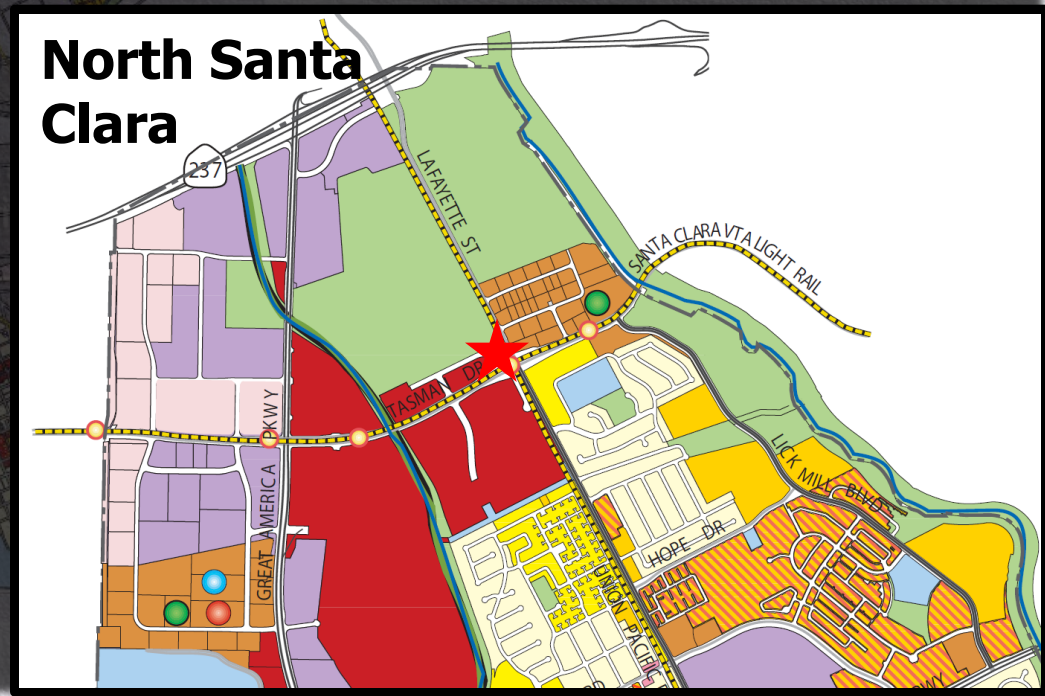


STORMWATER MANAGEMENT

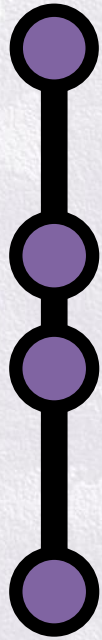


Figure 5.2-3
Land Use Diagram
Phase III: 2025-2035

- Very Low Density Residential
 - Low Density Residential
 - Medium Density Residential
 - High Density Residential
 - Neighborhood Commercial
 - Community Commercial
 - Regional Commercial
 - Neighborhood Mixed Use
 - Community Mixed Use
 - Regional Mixed Use
 - Public/Quasi Public
 - Low Intensity Office/R&D
 - High Intensity Office/R&D
 - Parks/Open Space
 - Light Industrial
 - Heavy Industrial
 - Santa Clara Station Area
 - Downtown Core
-
- New Public Facilities
 - Open Space - (with new development)
 - New Neighborhood Retail
- Actual size and location to be determined in planning process
- Exception Areas for Places of Assembly and Entertainment Uses
- Rail & Light Rail
 - Stations
 - City Limits
 - Creek
 - Trail
 - Proposed Trail



Roadmap



TRANSPORTATION & LAND USE HISTORY

FUTURE LAND USE CHANGES

FUTURE TRANSPORTATION VISION

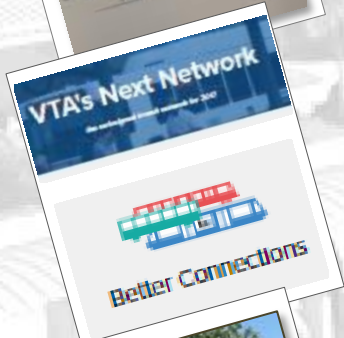


CHALLENGES & OPPORTUNITIES

Policy Objectives & Current Transportation Initiatives



COMMUNITY DESIGN & TRANSPORTATION MANUAL
(POLICY)



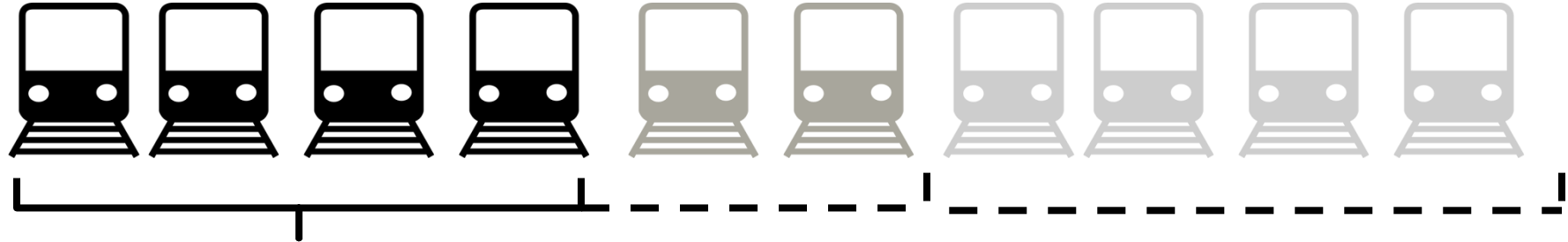
TRANSIT NETWORK REDESIGN 2017
(INITIATIVE)



TASMAN CORRIDOR COMPLETE STREETS STUDY
(INITIATIVE)

What is ACEforward?

Goal 1: Increase frequency of service



Today: A train every 45-60 minutes during commute hours (4 roundtrips)

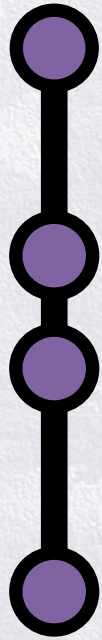
By 2018: A train every 30-40 minutes...

By 2022: A train every 15-25 minutes during commute hours (10 roundtrips)

Goal 2: Extend service to Merced

The map shows the ACE route from San Jose to Merced. Existing stations are marked with solid purple circles, and proposed stations are marked with open purple circles. The route starts at San Jose Diridon and goes through Santa Clara, Levi's Stadium/Great America, Centerville/Fremont, Pleasanton, Vasco Rd, Livermore Downtown, Tracy, Lathrop River Islands, Modesto Downtown, Manteca Downtown, Ripon Downtown, Turlock Downtown, Livingston or Atwater Downtown, and ends at Merced Downtown. Stockton is also shown as an existing station on the route.

Roadmap



TRANSPORTATION & LAND USE HISTORY

FUTURE LAND USE CHANGES

FUTURE TRANSPORTATION VISION



CHALLENGES & OPPORTUNITIES

Challenges



PEDESTRIAN
AND
BICYCLE
ACCESS



Challenges



FUTURE
DOUBLE
TRACKING

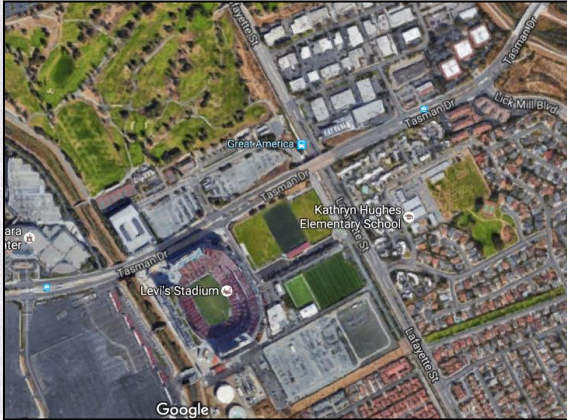


LIGHT RAIL
TRAVEL TIMES &
RELIABILITY



COMPLEX
PARKING NEEDS

TRANSIT CENTER
Great America Station
12991 State & Triques Drive



LACK OF
STATION AREA
MASTER PLAN



ONGOING
DEVELOPMENT

Opportunities



TRANSPORTATION IMPACTS &
MULTIMODAL IMPROVEMENT PLANS (MIP)



INTERAGENCY COORDINATION



POTENTIAL STATION AREA MASTER PLAN

Q&A



Lee Butler, City of Santa Clara

lbutler@santaclaraca.gov

408-615-2450



Melissa Cerezo, VTA

melissa.cerezo@vta.org

408-321-7572



Corinne Winter, ACE

corinne@winter.associates

510-316-9049