

What Should A 21st-Century Jail Look Like?

Santa Clara County – Main Jail East
Tuesday, August 9, 2016



Agenda

- Background, Existing Conditions, Legislation – Tony Filice
- Urban Design and Civic Center Context – David Barry
- Programming – Captain Sepulveda
- Next Steps / Project Schedule – Tony Filice



Background

- Many of the County's jail facilities built in 1950's and 1980's with 24/7 usage
- 2011 State realignment (AB 109) meant many inmates would stay in County jail, some for years, instead of serving time in State prison
- State prisons were overcrowded and were under federal oversight due to poor health care
- This changed County jails from short term housing of un-sentenced inmates to longer term housing that needed to provide programming and health care
- Made County jails to become a hybrid jail/prison system
- State began to offer funding to counties to build new jail facilities, but Santa Clara County never applied

Goal of SB 863 and County's Proposal

- Application submitted to the State 8/28/15
 - \$240 million available to 3 large counties (\$80 million each)
- Received conditional award for \$80 million on December 17, 2015
- Objective: Reduce need for bed space through treatment
 - Replace deteriorating housing with educational, vocational, and rehabilitation treatment beds
 - Increase the number of mental health treatment beds and substance use treatment services
 - Build a medium/high-medium security facility which provides Re-entry Services, Mental Health Treatment, and Inmate Program Space

Site Boundary

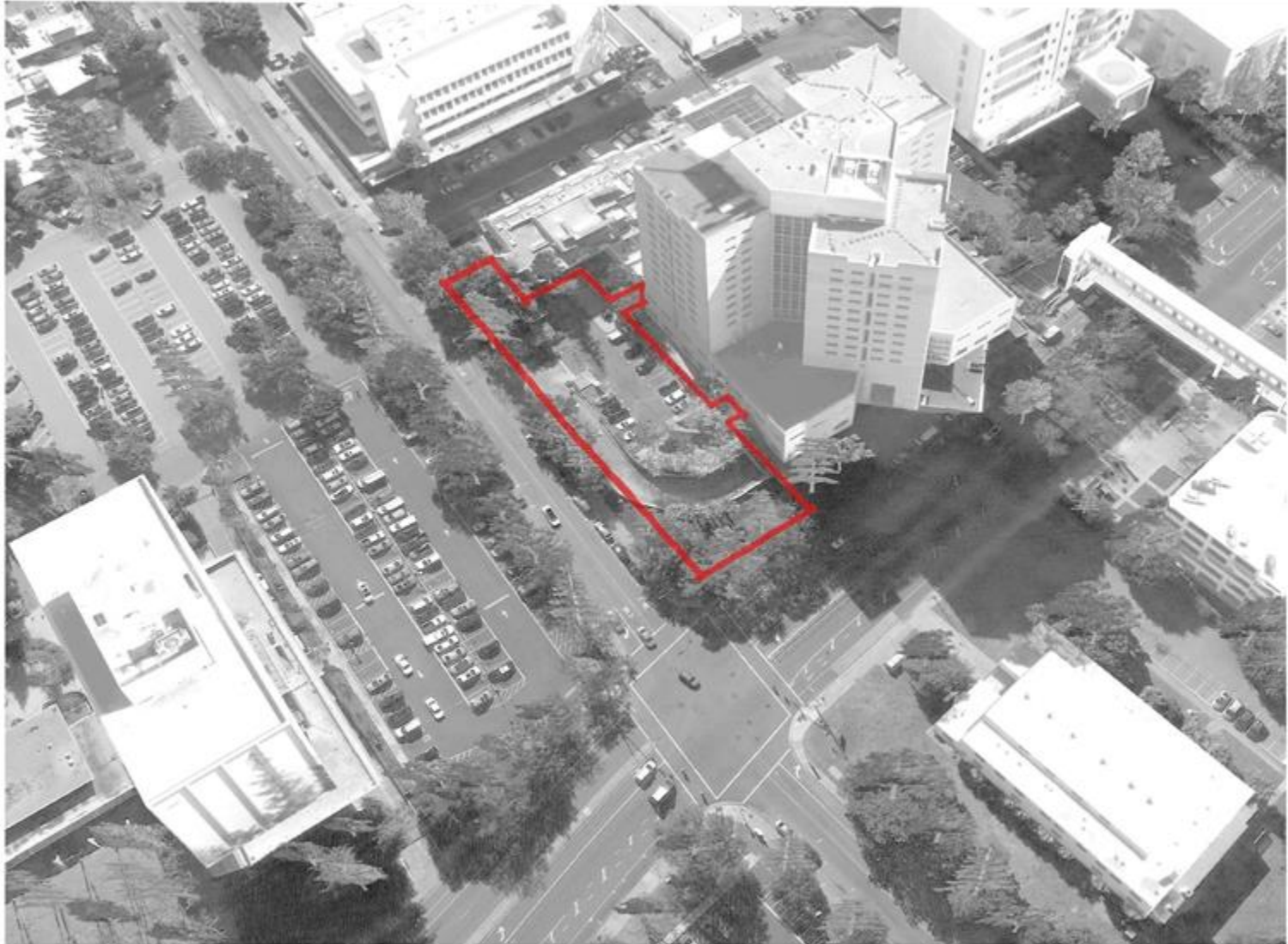


Image by AECOM

SITE INFO

SANTA CLARA COUNTY JAIL
SOUTH BUILDING

SANTA CLARA COUNTY JAIL
MAIN BUILDING

PARKING LOT AND
BRIDGE CONNECTION



JUVENILE
HALL ACCESS

VEHICLE EXIT FROM
SOUTH BUILDING

VEHICULAR EXIT
FROM MAIN
BUILDING

PEDESTRIAN RAMP
TO MAIN BUILDING

AECOM

Santa Clara County Civic Center Master Plan

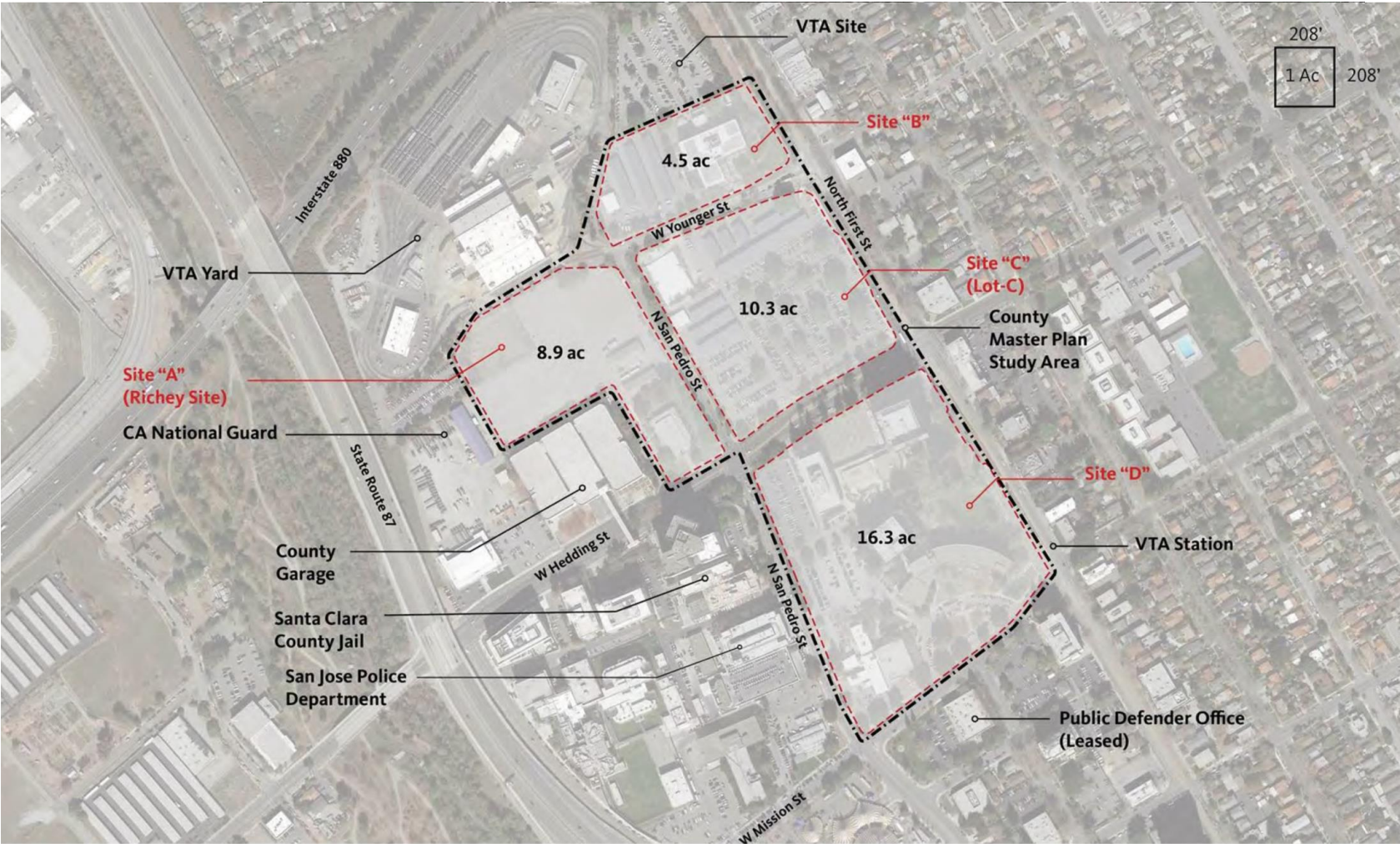


Image by Gensler

Santa Clara County Civic Center Master Plan

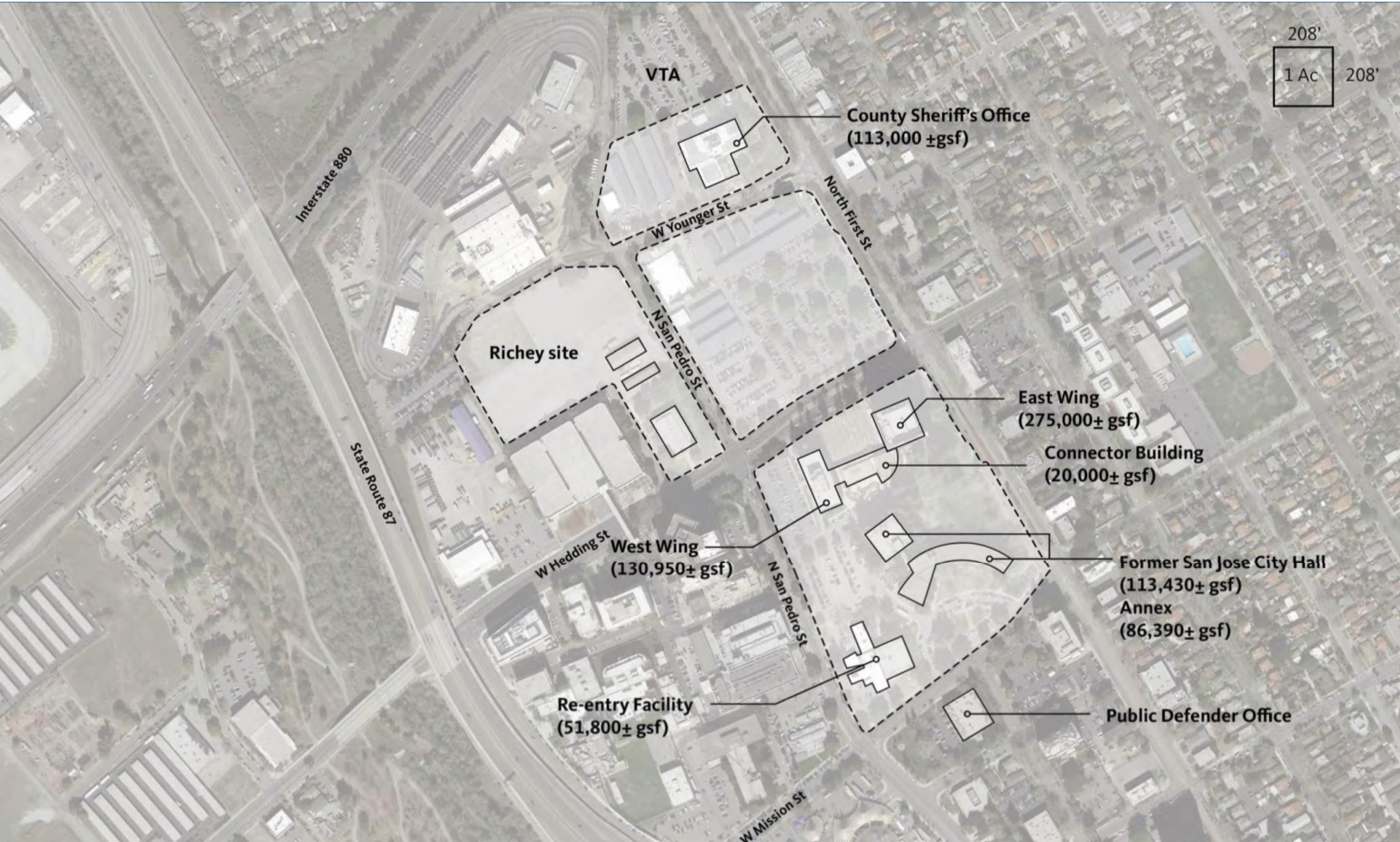
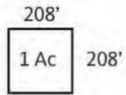
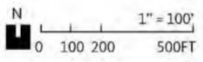


Image by Gensler

Santa Clara County Civic Center Master Plan



- County Services
- Law + Justice
- Development Site

County Services (including Law + Justice)

Land Area (acres)	23.7
GSF	1,150,000±
Parking	2,500 – 3,500

Site Surplus

Land Area (acres)	16.3
-------------------	------

Image by Gensler

Central Location

- Main Jail East (MJE) is located at the center of the future Santa Clara County Civic Precinct, highly visible from North First Street approach
- MJE is an opportunity to transform the character of the existing facility to align with future development context
- MJE is an opportunity to make a positive statement about commitment to rehabilitation and mental health in the County's detention system
- MJE is an opportunity to maximize daylight and offer a provocative, attractive day and nighttime image for the precinct

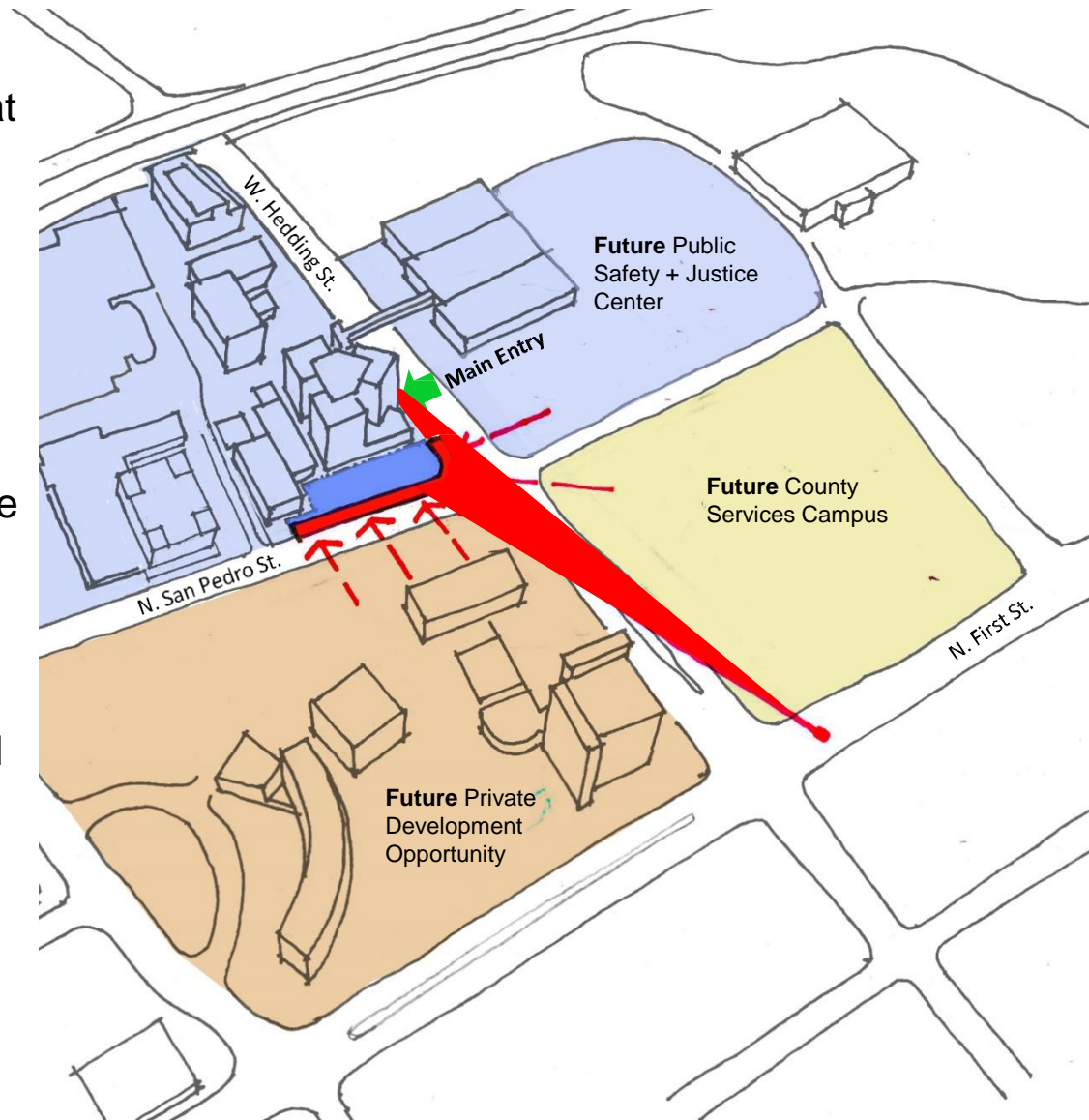


Image by AECOM

Central Location

- W. Hedding Street is the **primary corridor** and frontage for the precinct
- N. San Pedro Street is the **secondary corridor** and frontage
- **A strong landscape concept** is desirable along N. San Pedro as visual buffer to future Urban Village
- **Maximize (expand) width of the sidewalk** to establish a public realm and introduce landscape/hardscape concept on both W. Hedding and N. San Pedro frontages

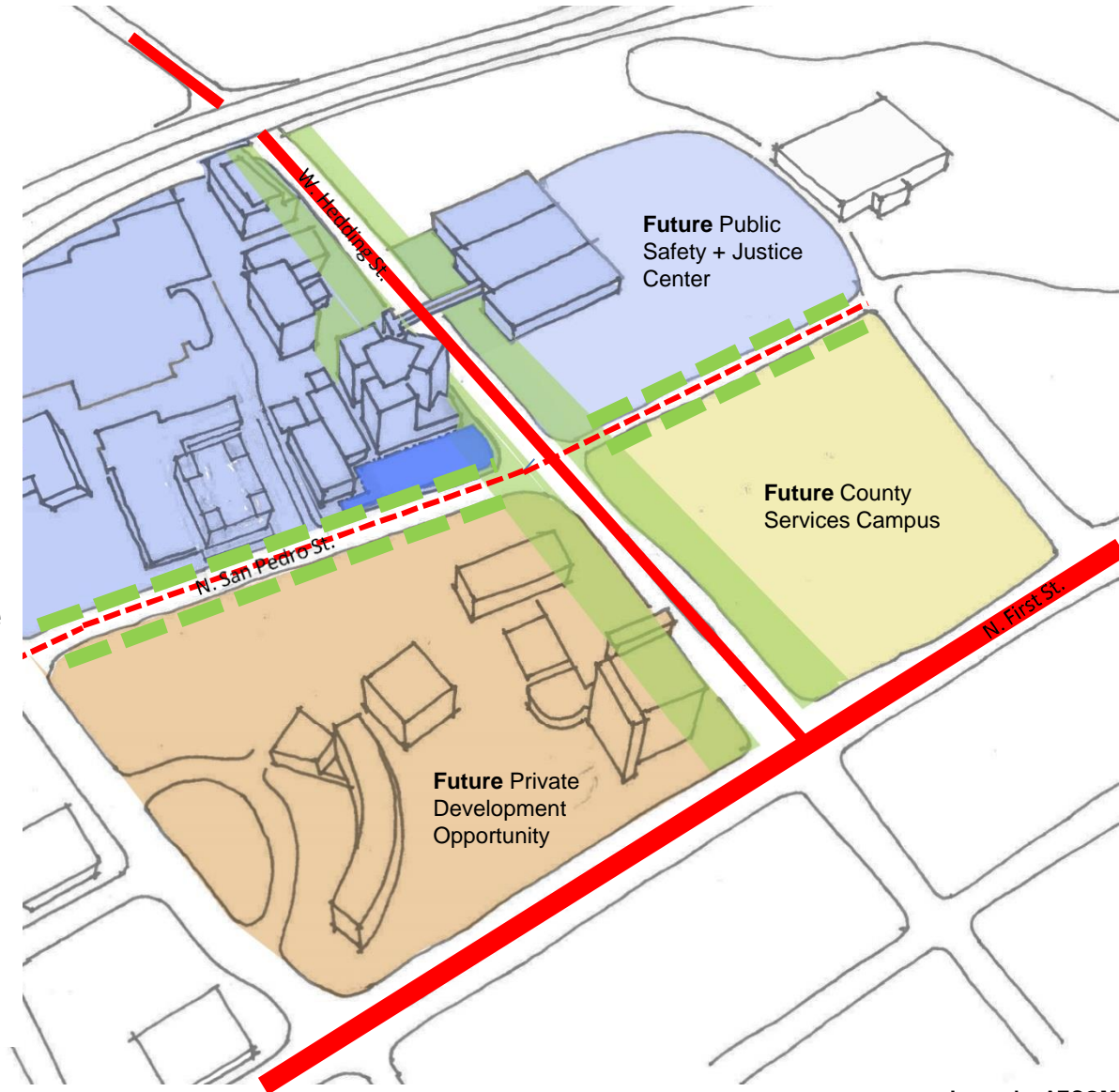


Image by AECOM

Central Location

- **Prime real estate** development sites and civic nodes along W. Hedding
- Intersection of N. San Pedro and W. Hedding will be the **heart of the future development precinct**
- Main Jail East will be located at the **corner** of the future civic and mixed-use district
- **Use durable materials** and design language befitting the emerging civic precinct, the civic function and the prime urban corner location
- Consider building exterior development and site pedestrian realm as **opportunities for art in the public domain** while resolving functional and security requirements

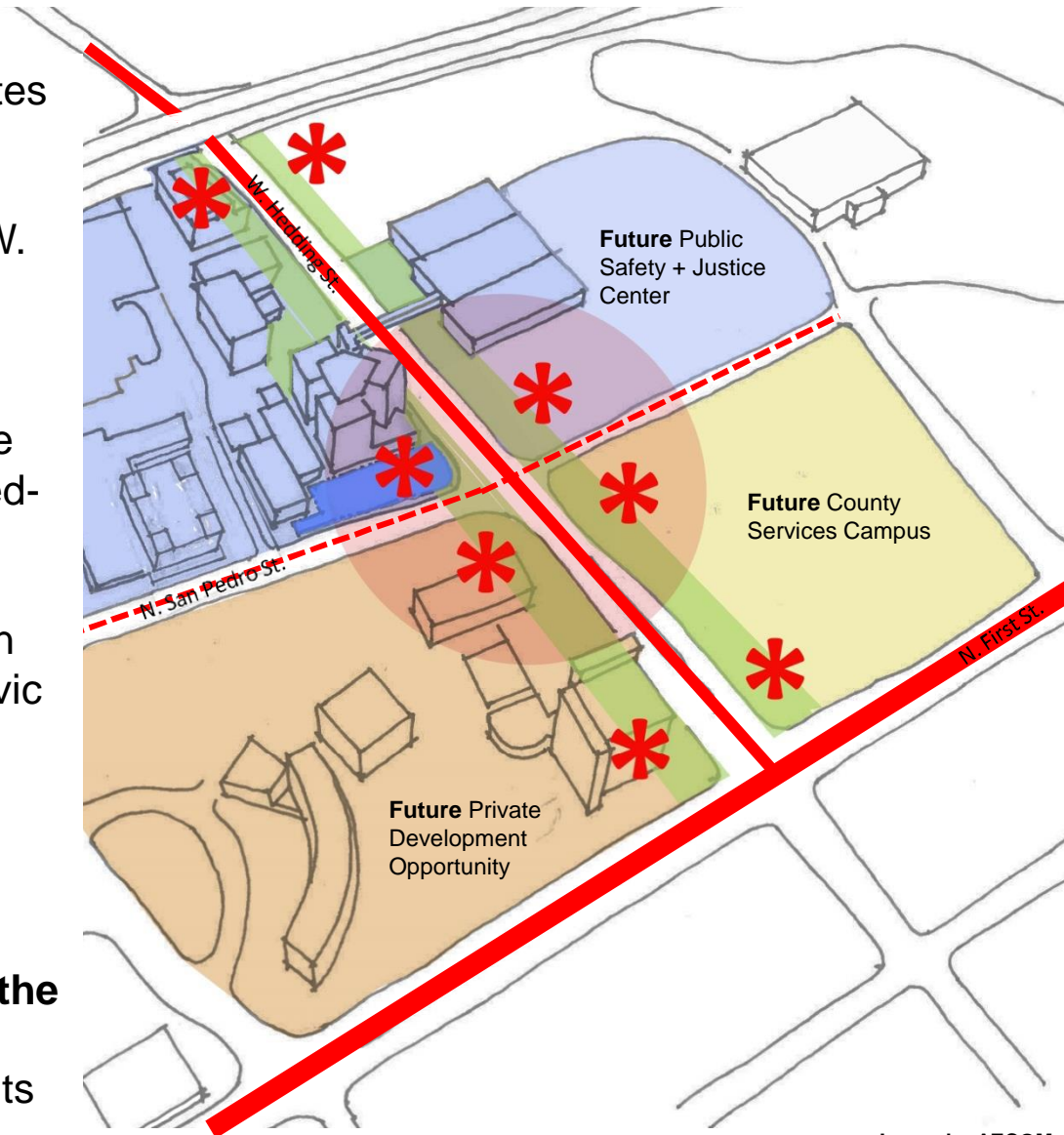


Image by AECOM

Description of Proposed Facility

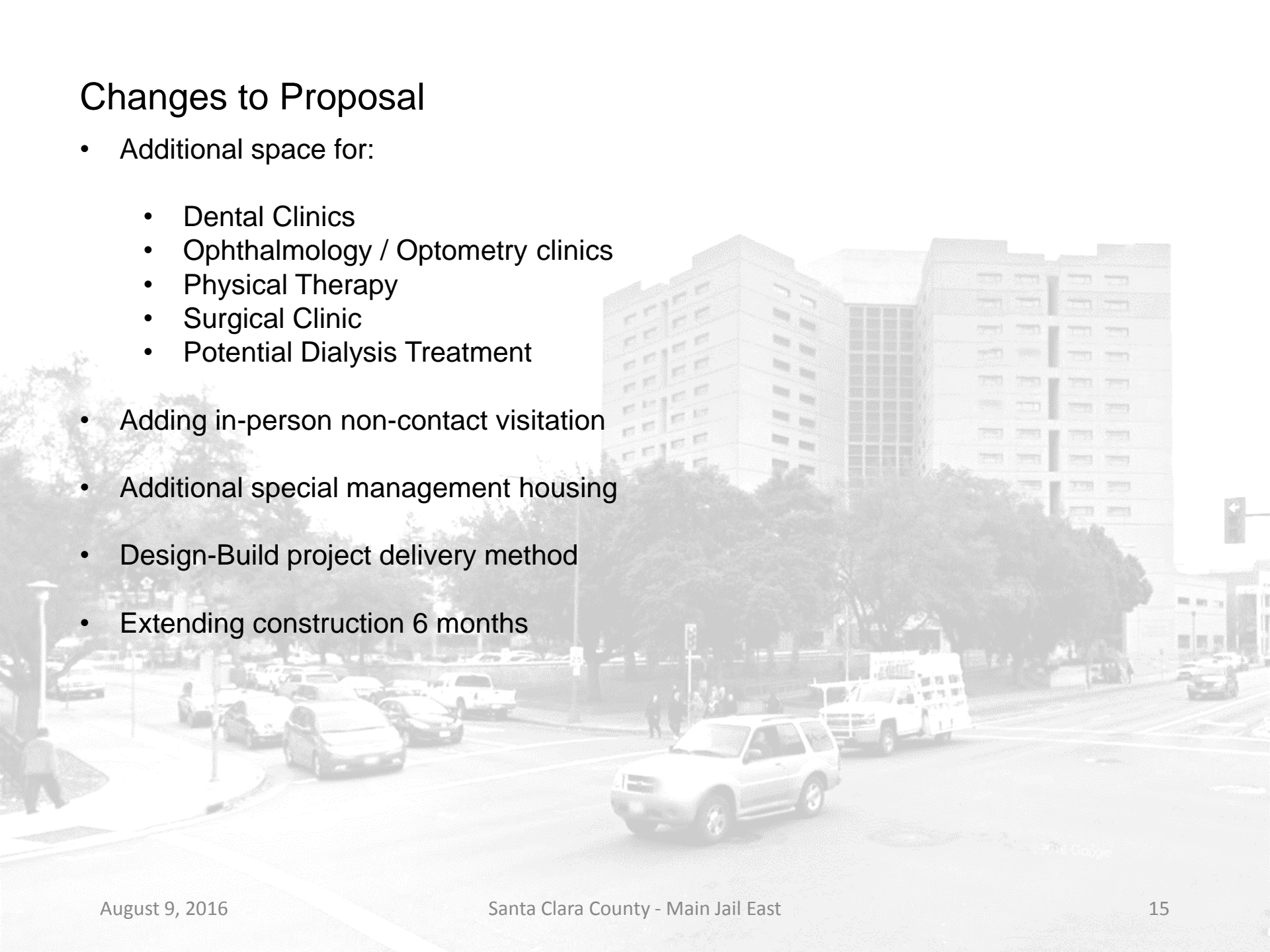
Floor	Floor Description	No. of Units	Cells per Unit	Beds Per Cell	Beds per Floor
7 th	General Population Housing Units	3	30	2	170
6 th	Re-Entry General Population Housing (Male/Female)	3	30	2	180
5 th	Special Management Step Down Housing (Male/Female)	3	30	2	180
4 th	Special Management Step Down Housing (Male/Female)	3	30	2	180
3 rd	Mental Health/Special Mgt. Housing (Male/Female)	3	35	1	105
2 nd	Administrative Offices/Transport Area/Staff Support	0			
1 st	Public Lobby/Visiting/Control Station	0			
	TOTAL				815

Issues Addressed by Proposal

- Current lack of mental health bed space for those diagnosed with Serious Mental Illness and Behavioral Health Diagnosis
- New facility to include 105-bed special management treatment housing floor with classroom and treatment space
- New facility also to include 360-bed “step down” mental health beds to provide continuation of mental health therapy and observation
- Facility includes treatment and program space, and incorporates community classrooms on each housing floor
- Will establish a Re-entry Services floor for male and female inmates with 90 days or less remaining in custody to receive intensified programming and services

Changes to Proposal

- Additional space for:
 - Dental Clinics
 - Ophthalmology / Optometry clinics
 - Physical Therapy
 - Surgical Clinic
 - Potential Dialysis Treatment
- Adding in-person non-contact visitation
- Additional special management housing
- Design-Build project delivery method
- Extending construction 6 months



Operational Changes

- New facility to utilize the teams funded for behavioral health and substance use treatment
 - Adds a total of 18 rated beds in the system, post demolition of Main Jail South
 - Shifts some inmates from Elmwood Complex to the New Jail
 - Centralizes inmates within 90 days of release to Re-Entry Housing Units at the New Jail
- New 815 bed facility will replace 797 jail beds
- New facility will open in 2020
 - Finalized design by October 2016

Next Steps

- Board approval: Construction Management Consultant
 - June 21, 2016
- Conduct additional site visits: July- August 2016
- Design facility program: November 2016
- Complete Design-Build: July 2017
- Construction Complete: March 2020
- Facility ready for occupants: September 2020

Questions?

Email: newmainjail@faf.sccgov.org

Website: <https://www.sccgov.org/newmainjail>

