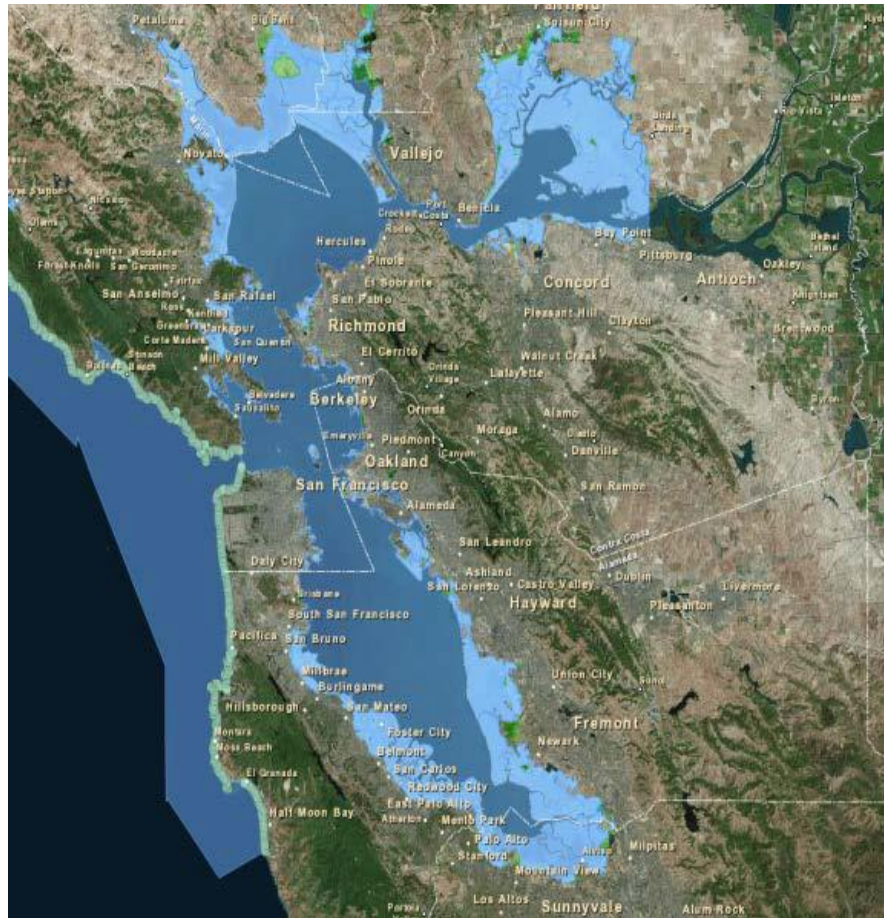


Resilient By Design

BAY AREA CHALLENGE

SPUR
June 8, 2016



The Threat

Climate change and associated sea level rise pose real threats to the Bay Area. Critical infrastructure is at risk, requiring innovative design and engineering solutions. We must act now to protect our communities from disastrous flooding that could cause millions in economic damage and disrupt our quality of life.



San Francisco Sea Level Rise PROJECTIONS

YEAR	MOST LIKELY (CEQA/Project Approvals*)	UPPER RANGE (Long-Range Planning*)
2030	6 in	12 in
2050	11 in	24 in
2100	36 in	66 in

Source: Sea Level Rise for the Coasts of California, Oregon, and Washington: Past, Present, and Future (NRC 2012)

*The City uses the NRC's (National Research Council) most likely SLR projection of 36" for ongoing planning and development purposes related to environmental review and project approvals. The SLR Action Plan considers adaptive strategies to address the NRC's upper end estimate of 66" of SLR by 2100 in the event that future GHG emissions and land ice melting accelerates beyond current predictions.

NOTE: Storm Surge + King Tides add ~40" to SLR (108" in 2100)

Urban flooding will
increase



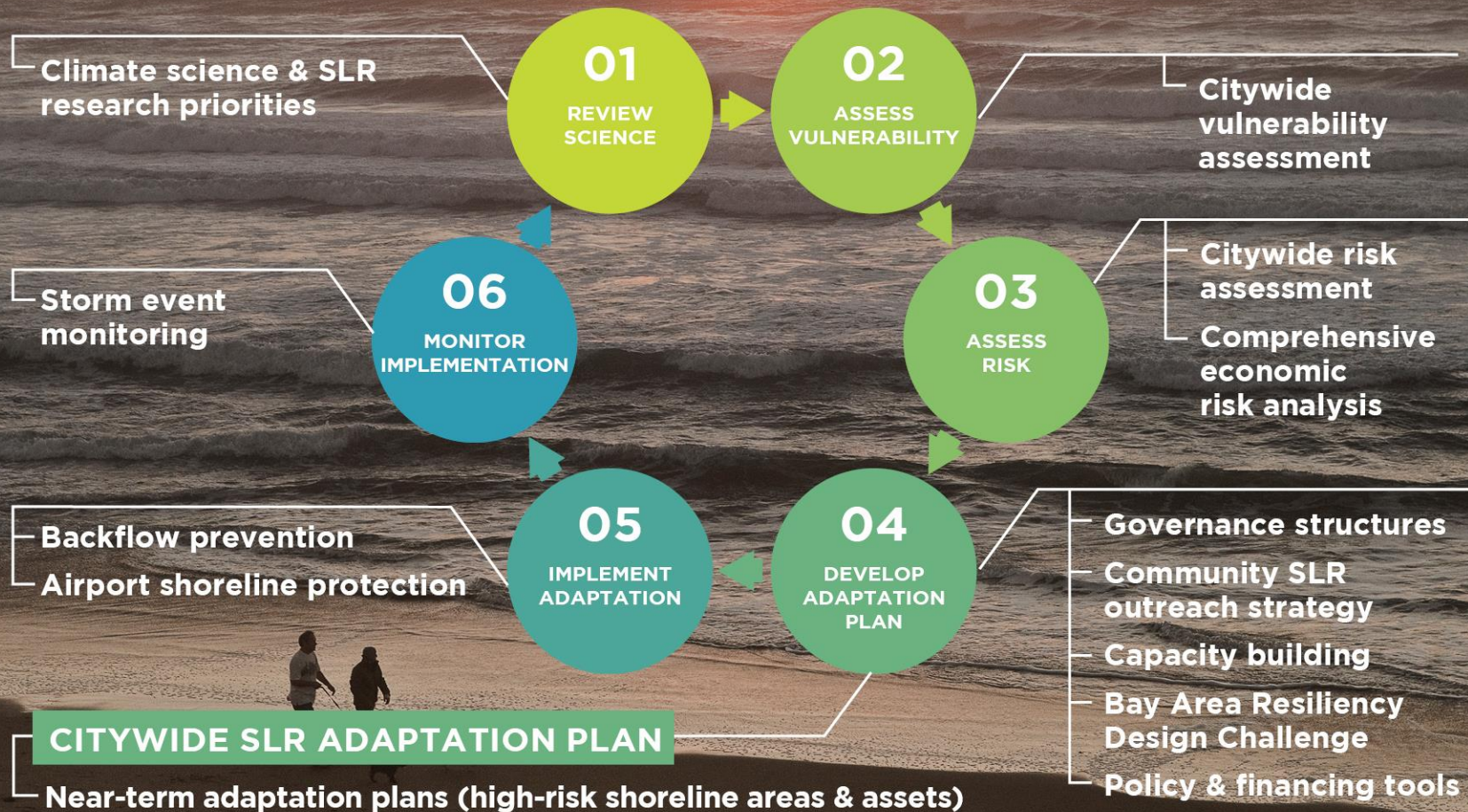


Ocean Beach Master Plan Before and After

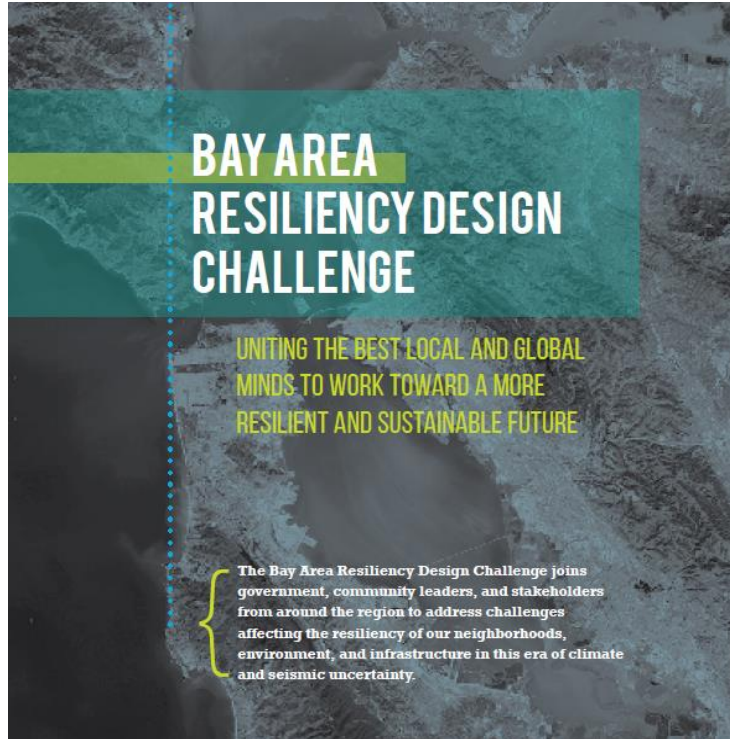




SEA LEVEL RISE PRIORITY ACTIONS [2016-2018]



Bay Area Resilient by Design Challenge



- A vision for the future: Innovative and Inspiring
- A solution that works: Based on RBD
- Collaborative and interdisciplinary
- Replicable and Implementable
- An invitation to all: Regional & Community and Design-driven

Collaborative at the Core



An Invitation to All



Philanthropic Funders



Nongovernmental Orgs



Thought Leaders & Universities



Corporate Partners



Government Agencies



Neighborhoods & Community

A Solution That Works

Rebuild by Design began as a response to Hurricane Sandy in the Northeast United States as a way to build back better.

It creates processes for communities and government to work with designers to a shared vision of a more resilient region.





THE COMMUNITY



REGIONAL APPROACH



Who We Are: Join Us!

- Chief Resiliency Officers – San Francisco, Berkeley, Oakland
- Marin County, San Mateo County, SCVWD, CHARG, City of Richmond
- BCDC
- BARC
- ABAG
- Coastal Conservancy
- SPUR
- Climate Readiness Institute
- SFEI
- And You

Next Steps

- Broaden the group of supporters and collaborators
- Create a uniquely Bay Area brand and approach that invites every community
- Outreach to elected officials, municipal leaders, community organizations and potential partners
- Partner with philanthropy and businesses









THANK
YOU

For more information:

Gil Kelley, Director
Citywide Planning

San Francisco Planning Department

PH: 415-575-9115

EM: gil.kelley@sfgov.org

Diana Sokolove, Senior Planner
Citywide Planning

San Francisco Planning Department

PH: 415-575-9046

EM: diana.sokolove@sfgov.org