

Oakland Transit, Accelerated

Sarah Fine, Senior Transportation Planner
City of Oakland



Through the NACTO Transit Program Accelerator, the City of Oakland and AC Transit propose to advance concept development for an integrated bus-bike corridor on MacArthur Boulevard and Grand Avenue.

Education Goals

- 1 Learn the key design and operational elements of NACTO transit streets
- 2 Develop a playbook for MacArthur Boulevard to improve transit operations and pedestrian & bike safety
- 3 Learn best practices for implementation partnerships
- 4 Identify how to deliver transit improvements quickly and at lower cost
- 5 Share the community, safety, and business benefits of transit streets and discover shared goals among stakeholders

Existing transit service

Diversity of riders, land use, topography

Established vision for transit improvement

City of Oakland

AC Transit

PlanACT
Help shape AC Transit's future!

Major Corridors Study | Fall 2015

MACARTHUR BOULEVARD CORRIDOR
57 NL

About the Corridor

The MacArthur corridor is served by local, Transbay, and express bus trips to downtown Oakland. The corridor's hilly topography and the need to operate buses on different sides of the I-580 freeway make access to transit on this corridor challenging. While ridership is high, on-time performance is poor. The corridor could benefit from intensive transit treatments to improve speed and reliability as well as access to transit.

BY 2020: RAPID BUS
Given the corridor's current ridership, Rapid Bus is recommended. Rapid Bus components include better traffic signals, enhanced shelters, real-time bus arrival information, and clearly marked buses. The new Rapid Bus line would be identical to the current Lines 57 and NL service but would skip some stops for a quicker ride.

BY 2040: BUS RAPID TRANSIT
High existing ridership and projected growth call for a substantial transit investment such as Bus Rapid Transit (BRT) on this corridor. Bus-only lanes would separate buses from other autos, reducing transit delays and improving transit reliability. A significant investment such as BRT will be designed to also improve neighborhood pedestrian and bicycle access. BRT service will use low-emission vehicles, provide high-quality bus stations, and provide frequent transit service.

13.7 MILES*
corridor length

12.3 MPH*
average travel speed

11,352
average daily ridership

*East Bay portion only

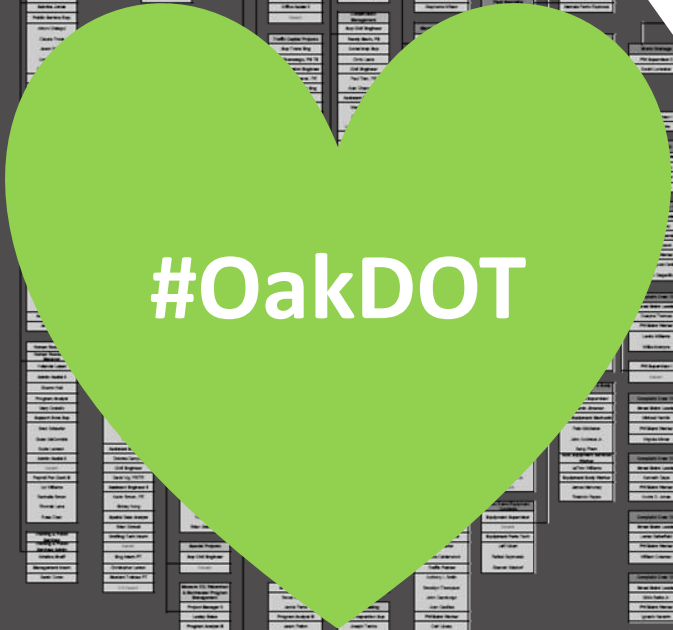
Get Involved. Stay Informed. We want to hear from you!

Attend a community meeting!
Check actransit.org/majorcorridors for the schedule.

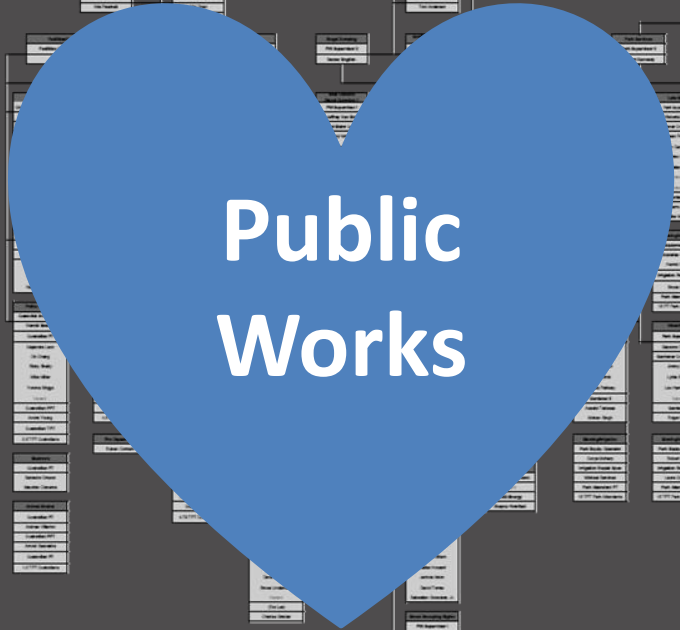
✉ planning@actransit.org
📺 [facebook.com/rideact](https://www.facebook.com/rideact)
🐦 twitter.com/rideact

📞 (510) 891-7266 English
(510) 891-7267 中文
(510) 891-7268 Español

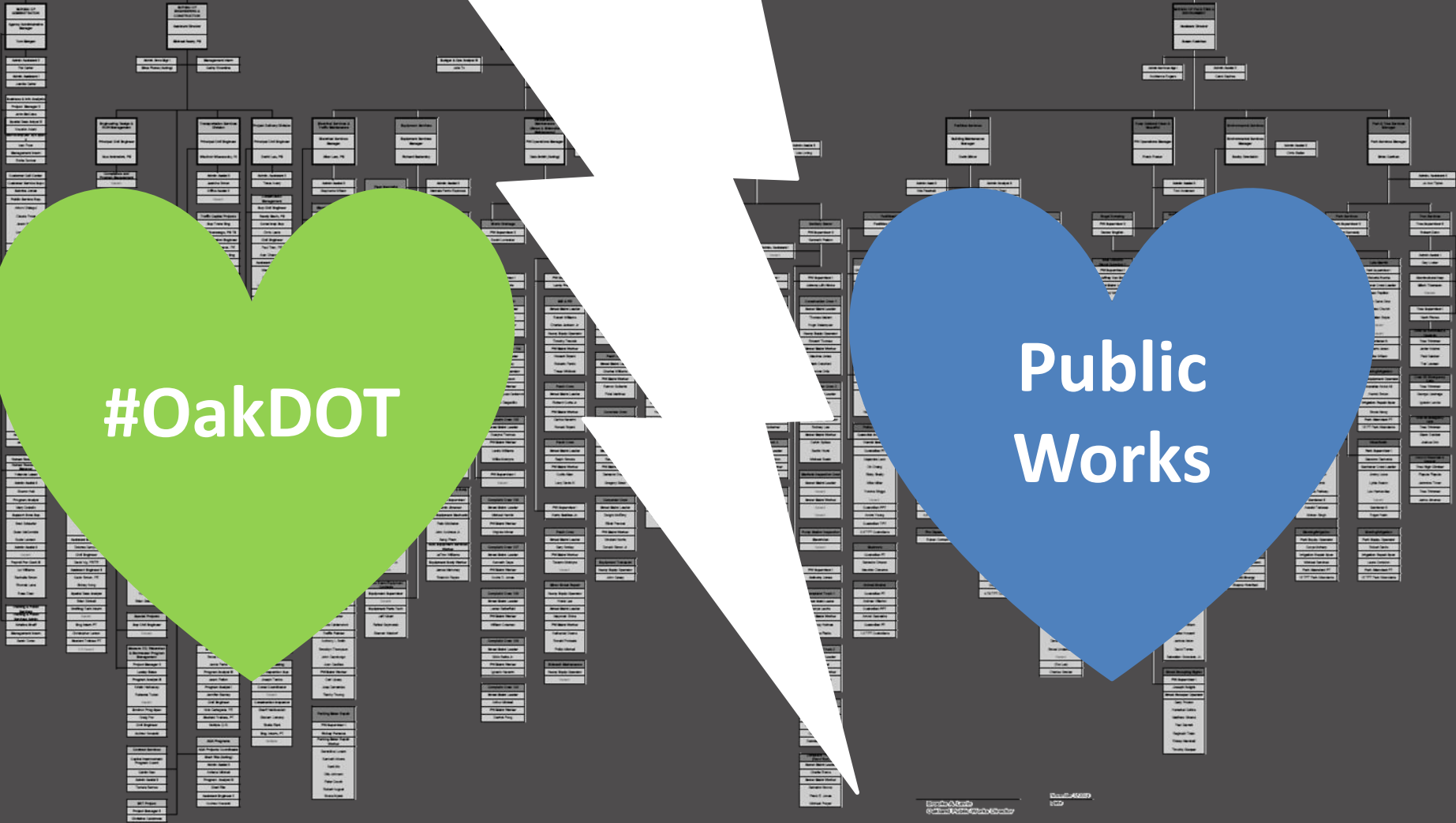
actransit.org/majorcorridors



#OakDOT



Public
Works





FOR LEASE
CALL
810 368 8900

2156

RAPID BUS

BART
ba

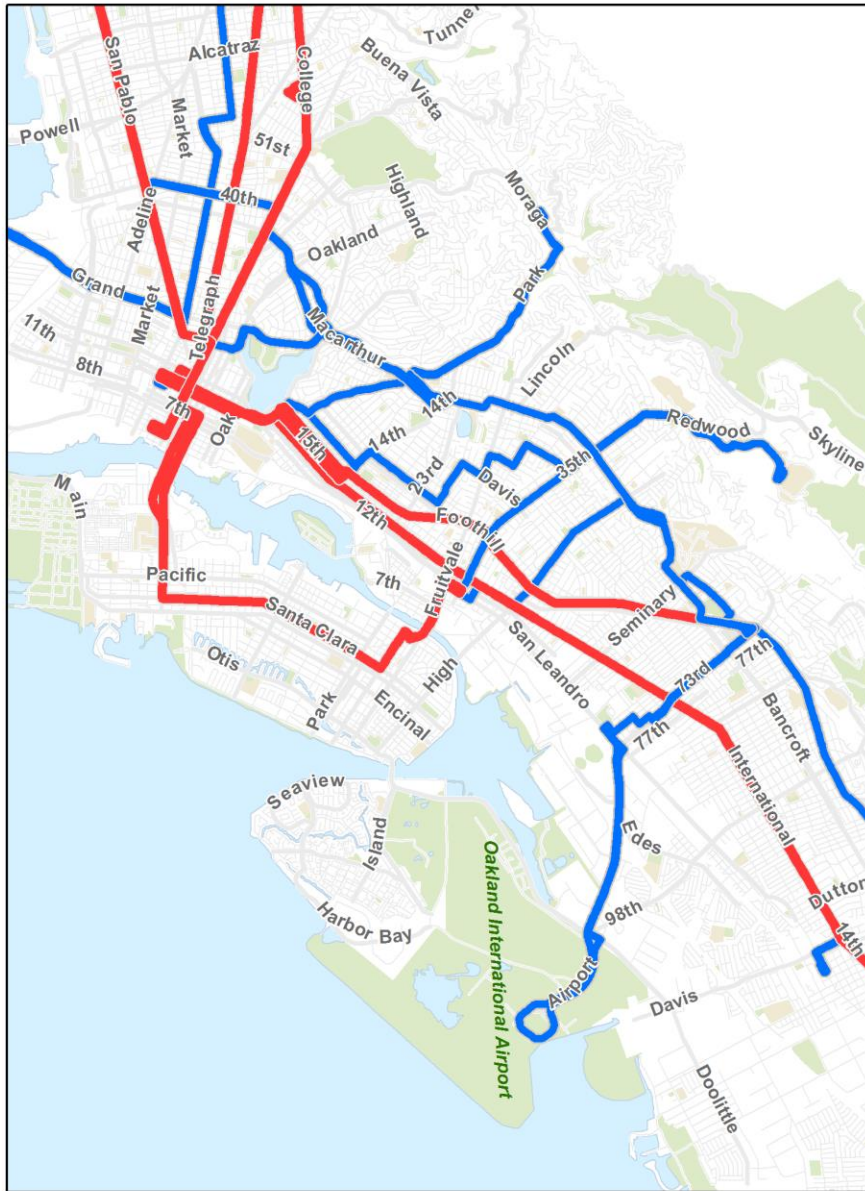
11th St

AE

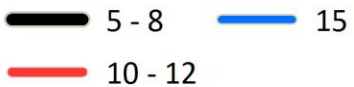
1154003



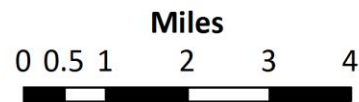
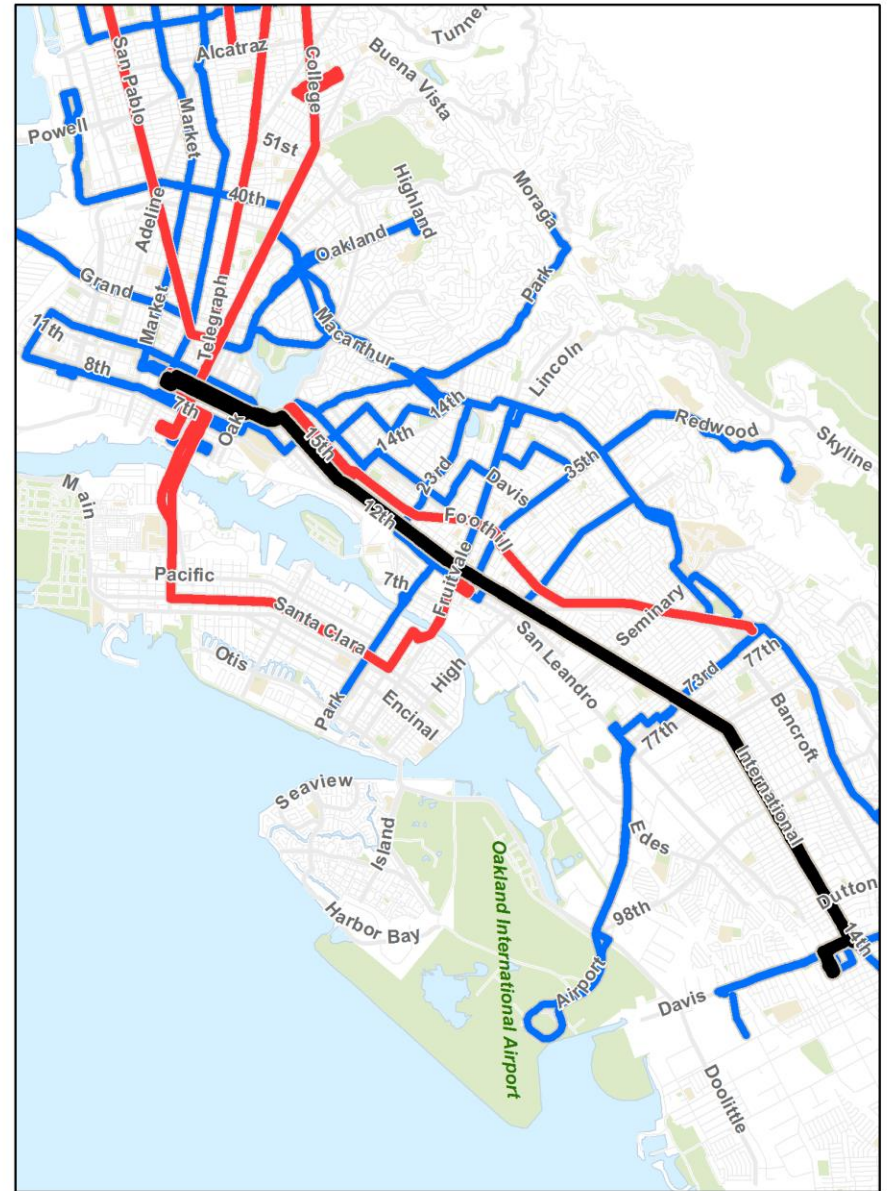
Existing



A bus every ___ minutes (Weekday Peak Hours)



Proposed



Source: AC Transit
Created: Sept 17, 2015

- San Pablo Ave./
Macdonald Ave.
72, 72M, 72R
- Line 18
18
- Telegraph Ave.
1, 1R
- Line 51
51A, 51B
- MacArthur Blvd.
57, 58L, NL
- Foothill Blvd.
40
- International Blvd./
East 14th St.
1, 1R
- Hesperian Blvd.
97
- East 14th St./
Mission Blvd.
99
- Line F
F
- Fruitvale/Park
20, 21







**Transit
Street
Design
Guide**

National Association of City Transportation Officials



FREMONT 8.14 MIN
4 CAR TRAIN

PLATFORM 1

BART
ba



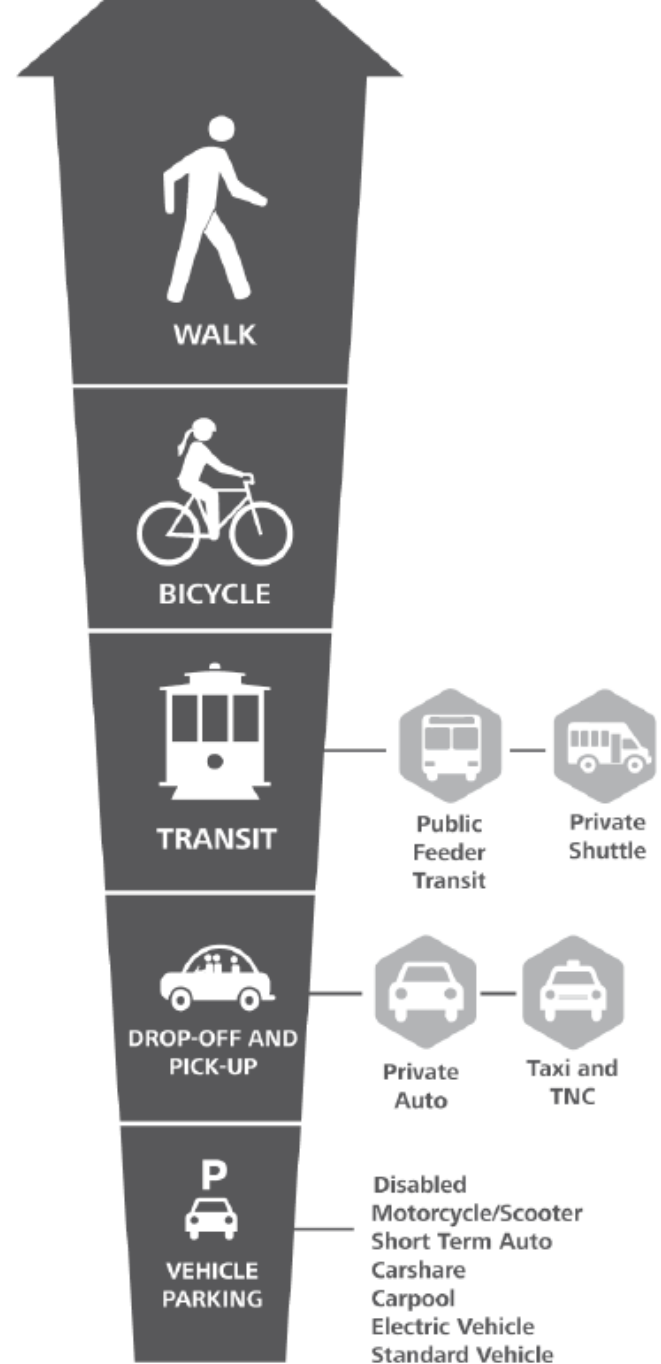


Station Access Policy

Draft – For Discussion



April 28, 2016



STATION TYPE

LESS AUTO SHARE

- Urban
- Urban with Parking
- Balanced Intermodal
- Intermodal - Auto Reliant
- Auto Dependent

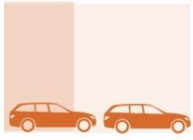
MORE AUTO SHARE



**Aspirational station type based on MTC's PDA designation Future Place Types*







PRIVATE MOTOR VEHICLES
600–1,600/HR



MIXED TRAFFIC WITH FREQUENT BUSES
1,000–2,800/HR



TWO-WAY PROTECTED BIKEWAY
7,500/HR



DEDICATED TRANSIT LANES
4,000–8,000/HR



SIDEWALK
9,000/HR



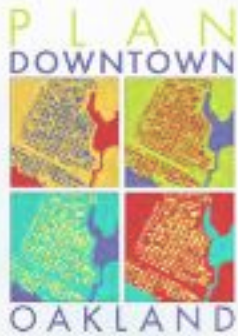
ON-STREET TRANSITWAY, BUS OR RAIL
10,000–25,000/HR



UPTOWN TRANSIT CENTER







DOWNTOWN OAKLAND SPECIFIC PLAN







Thank you!
Sarah Fine, Senior Transportation Planner
sfine@oaklandnet.com
510-238-6241

Confessions of an Oakland Suburbanite

Christina Yun, SPUR

— & —
STRANGE



Claremont Hills
North Hills

Rockridge
(Upper)

Rockridge

Temescal

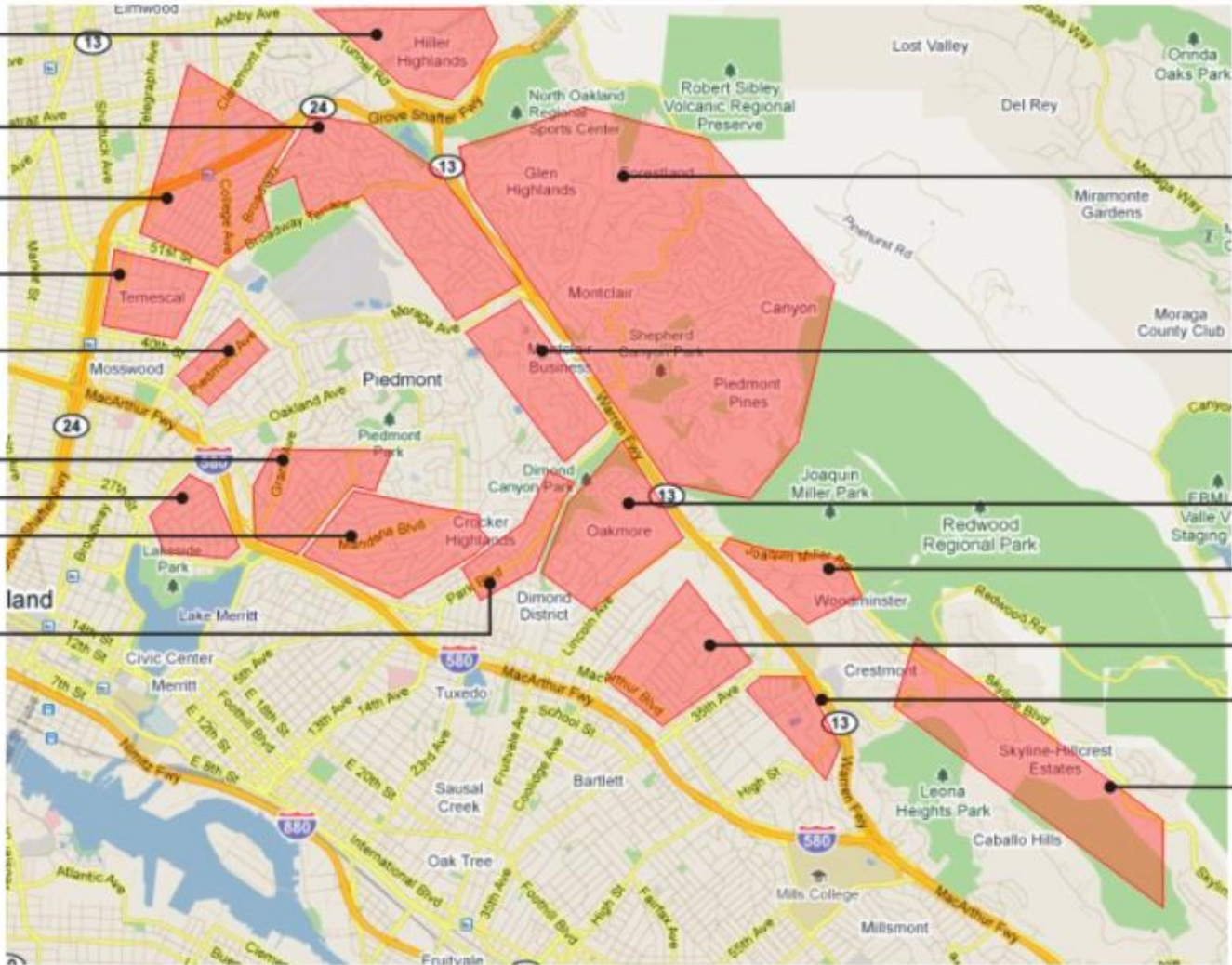
Piedmont Ave

Grand/Lakeshore

Adams Point

Crocker/
Trestle Glen

Glenview



Montclair

Montclair
(Piedmont side)

Oakmore

Joaquin Miller

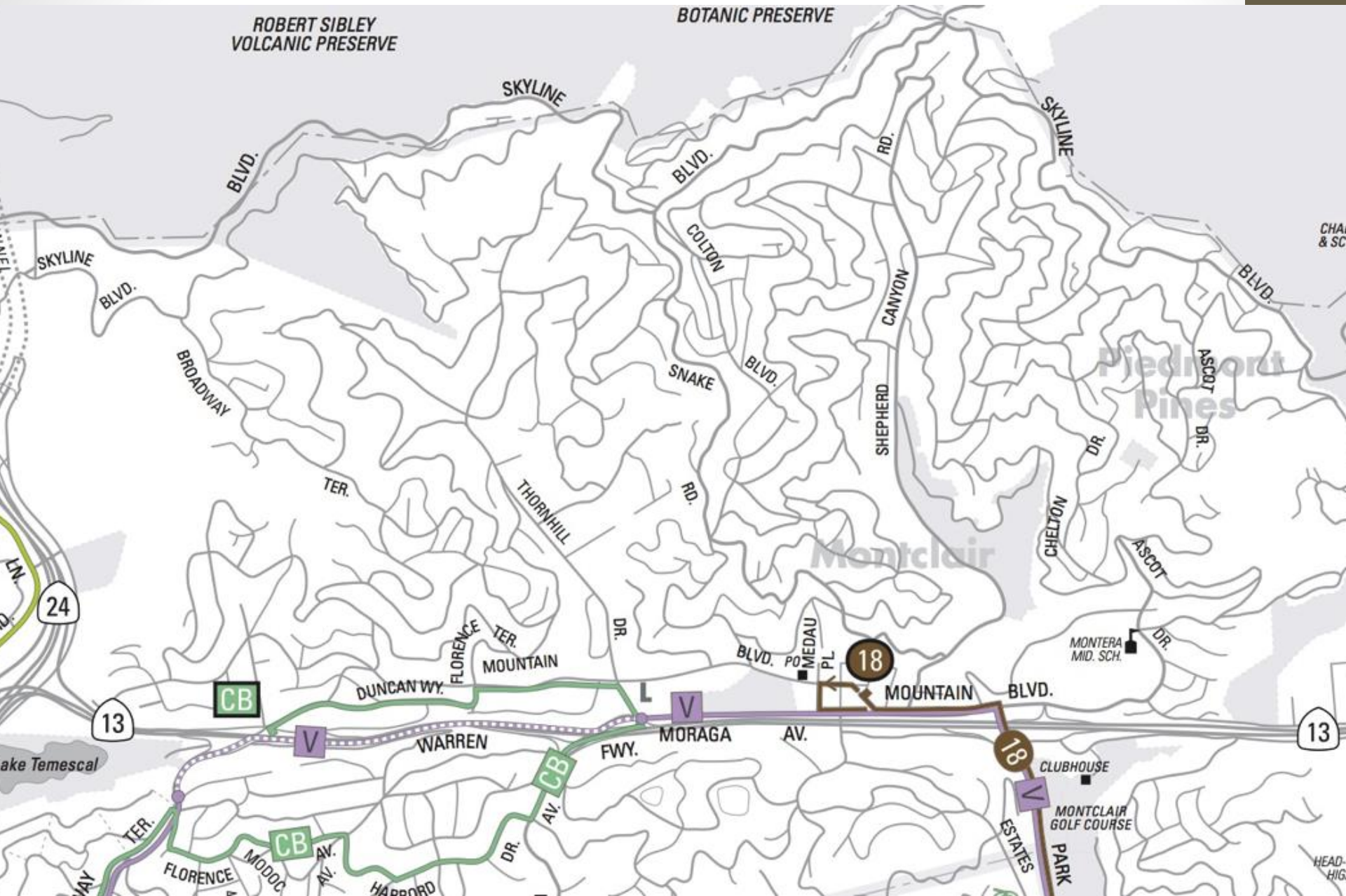
Laurel District

Redwood Hts

Skyline
Crestmont

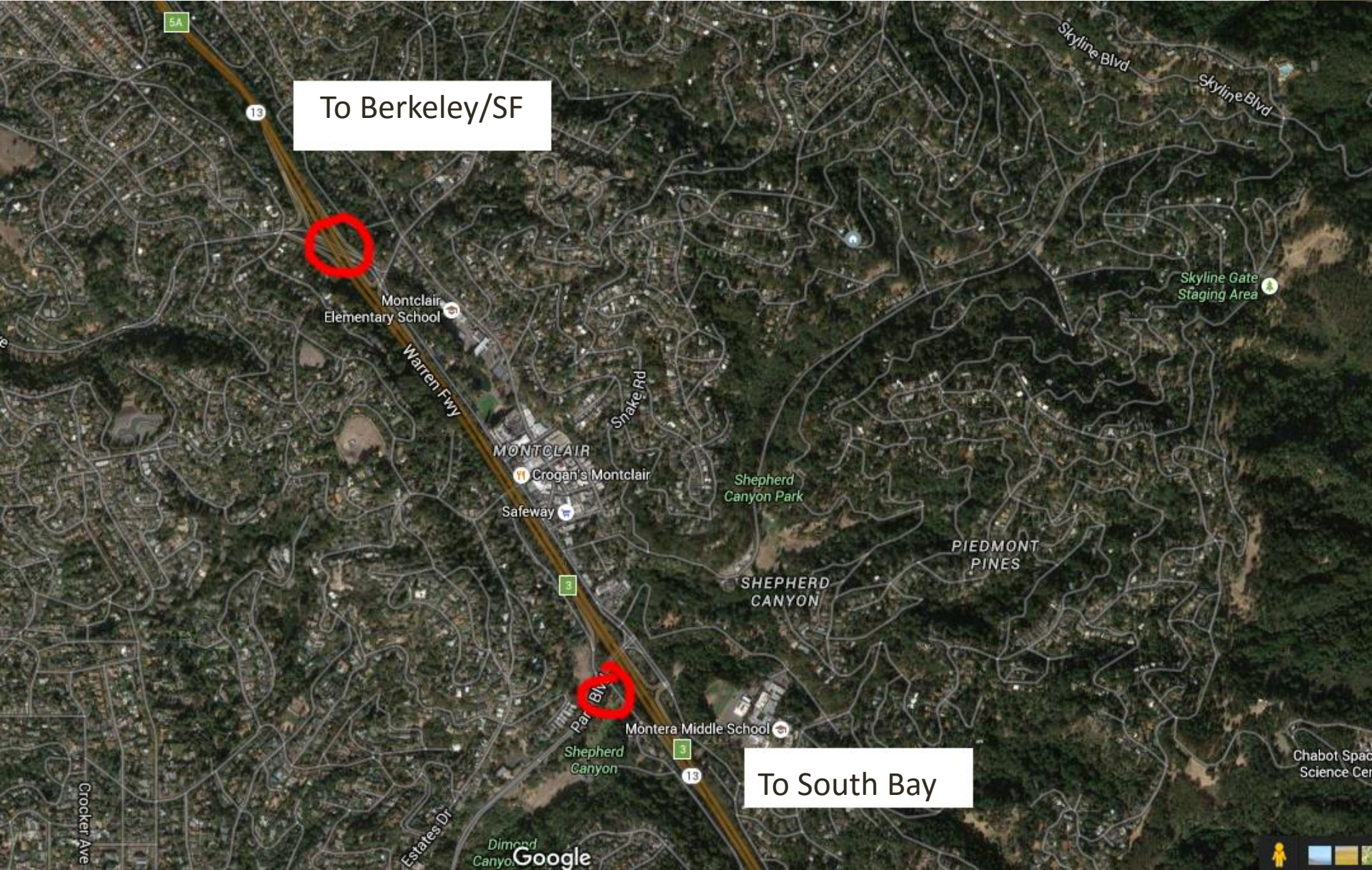


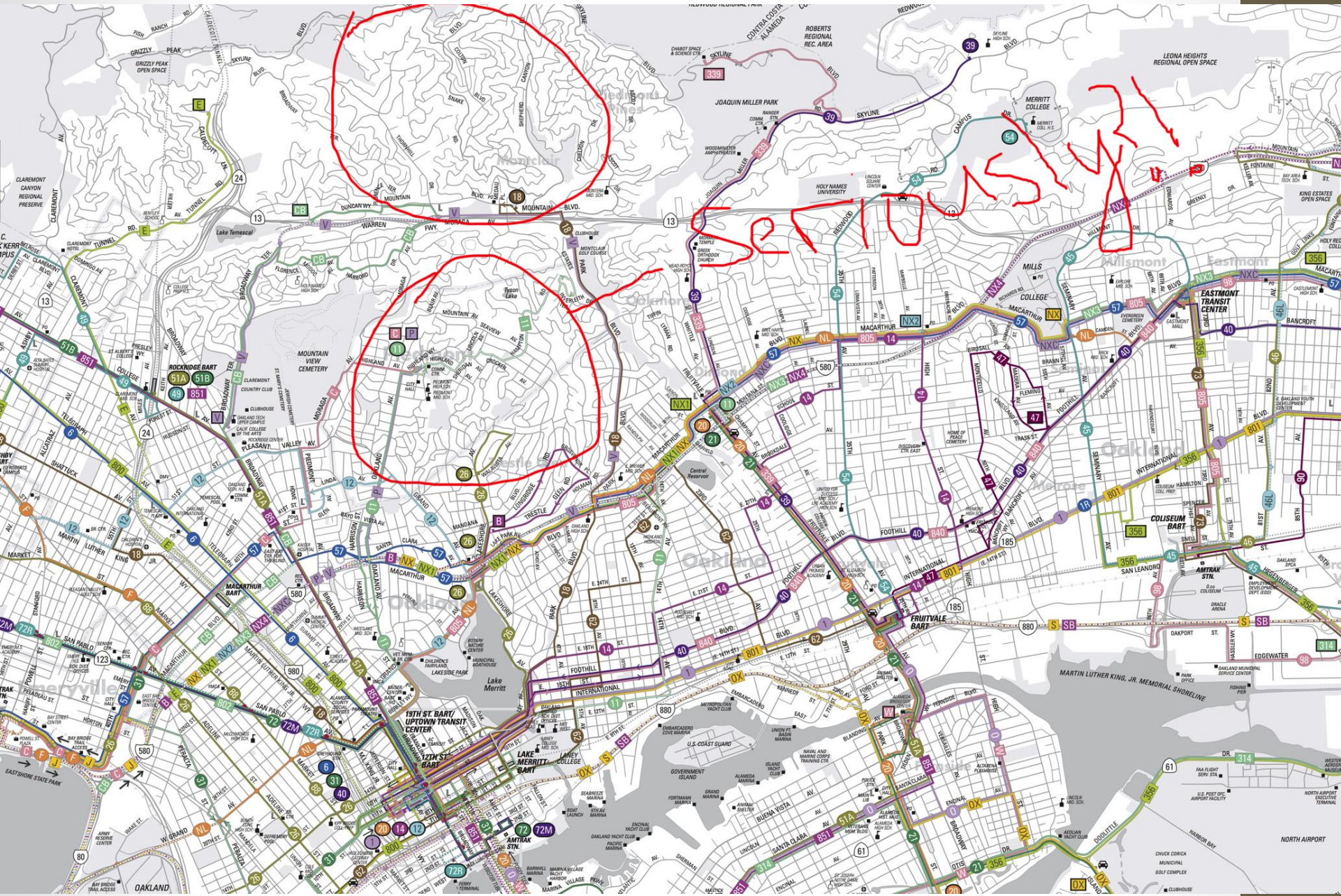
Three bus lines? Really?



To Berkeley/SF

To South Bay













WHAT DO YOU MEAN IT ISN'T COMING?

How my mom perceives me walking in our neighborhood:



How it actually is:







OH
THE THINGS
I WILL DO

WHEN I GROW UP

BIG



LIKE
YOU

AC TRANSIT
BUS STOP



26
Drop off only



NL
To San Francisco



57
To 40th St. & San Pablo Ave.



NX
To San Francisco
(Transbay riders only)



58L
To Oakland Amtrak at Jack London Square



653

805
To Downtown Oakland



657

B
To San Francisco



658
680
688

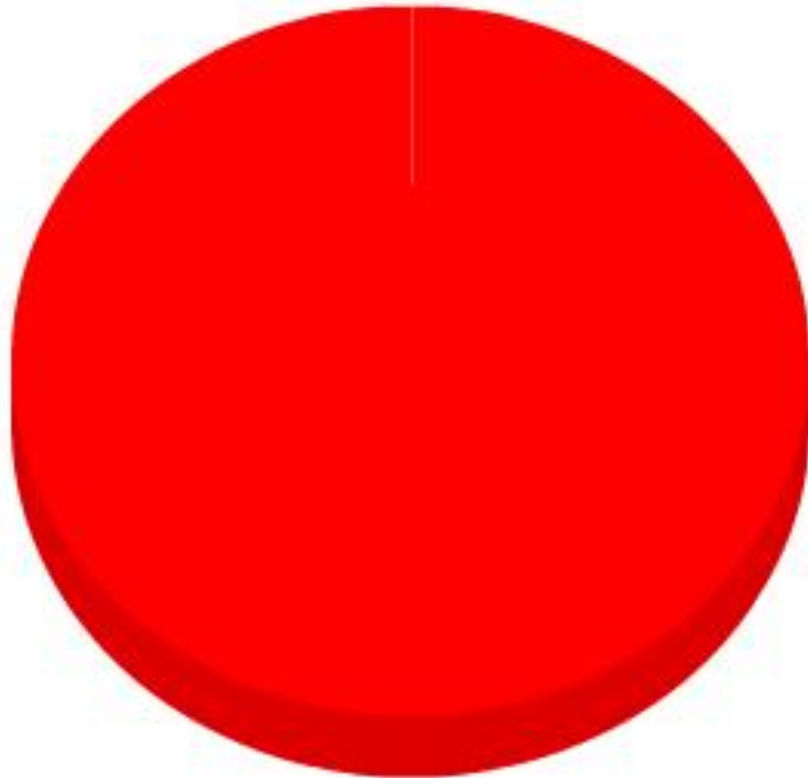
Limited weekday hours


511 and say "AC Transit" for transit info or say "Departure Times" for live bus predictions

www.actransit.org **STOP ID 55580**

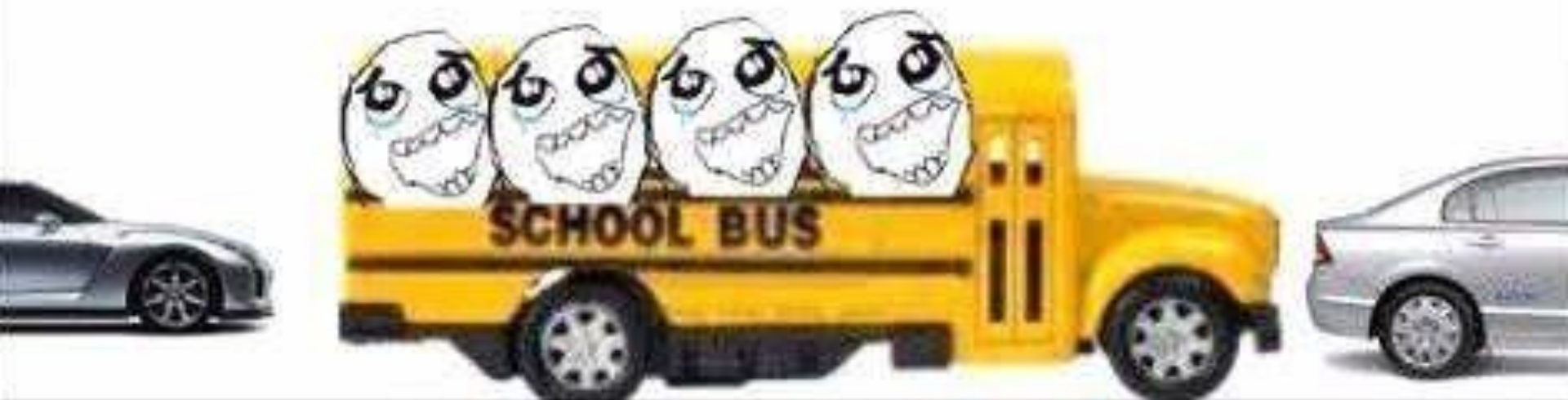


When I finish my homework



 On the bus ride to school

Traffic jam before school



Traffic jam after school





Welcome to

MONTCLAIR

Village

FARMER'S MARKET SUNDAYS 9AM-1PM



Thank you!

MINDING THE GAP

ACCESS TO PUBLIC TRANSPORTATION

Population

415

Schools

0

Traffic Lights

0

Gas stations

0

Grocery stores

0

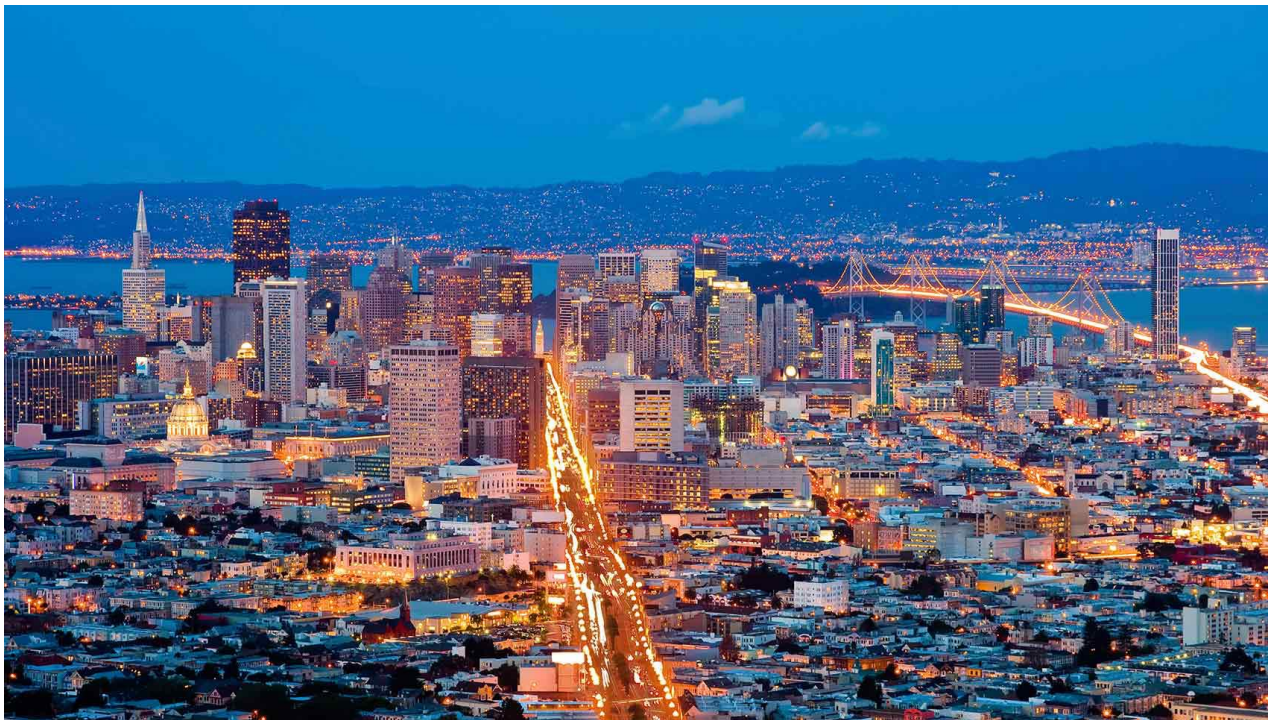
Public Transportation

0

Starbucks

0





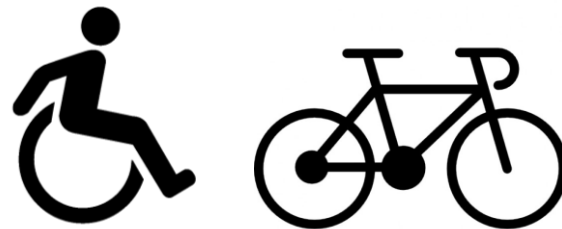
Automobile / Public Transit



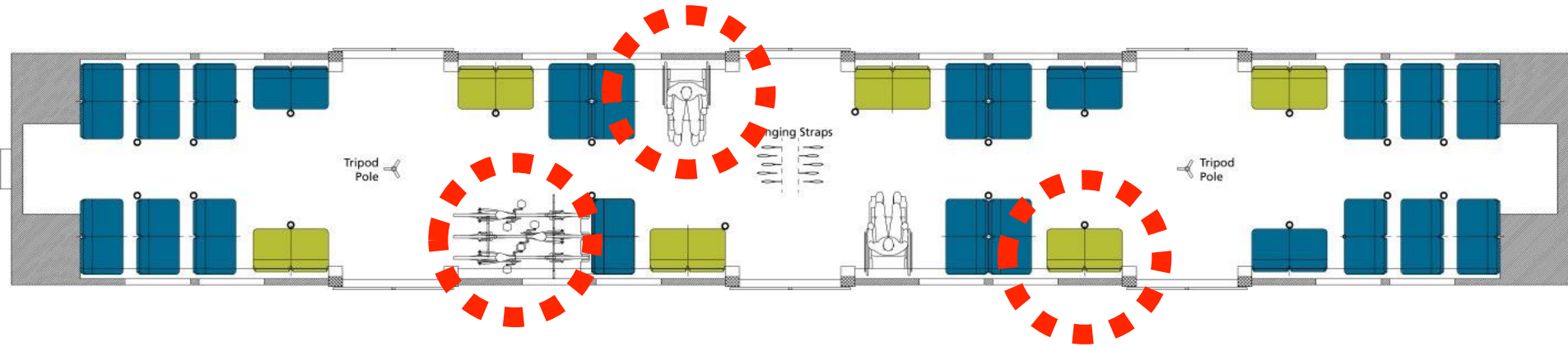
What is public transportation?



How do you fit the needs of a diverse population?



Inclusion



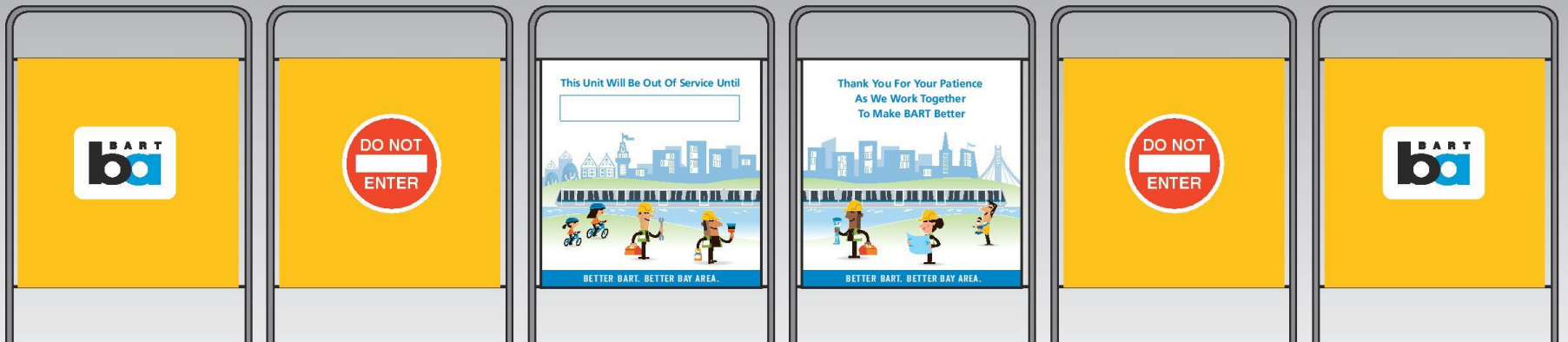
equality



challenges



an aging system...









GET BART DISCOUNTS
WITH CLIPPER.

OUT OF
SERVICE



GET CLIPPER.
LOAD IT. TAG IT. GO.



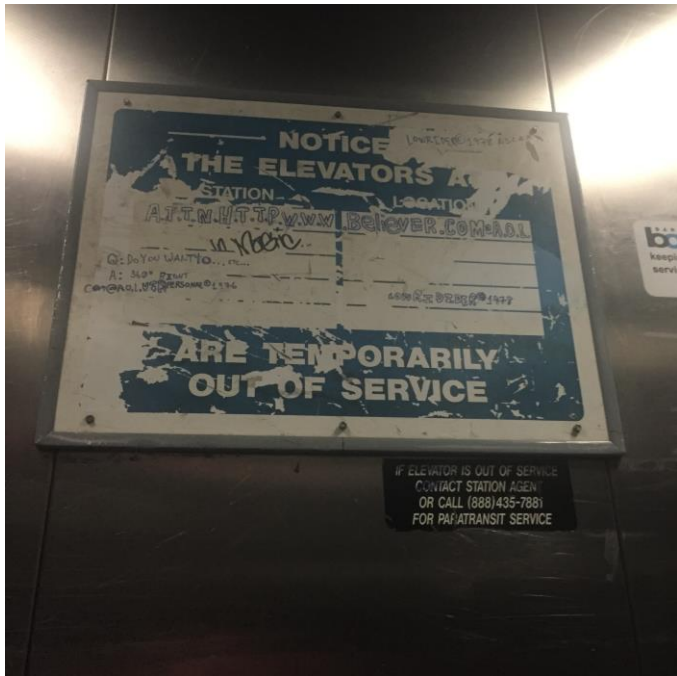
3227

GET BART DISCOUNTS
WITH CLIPPER.



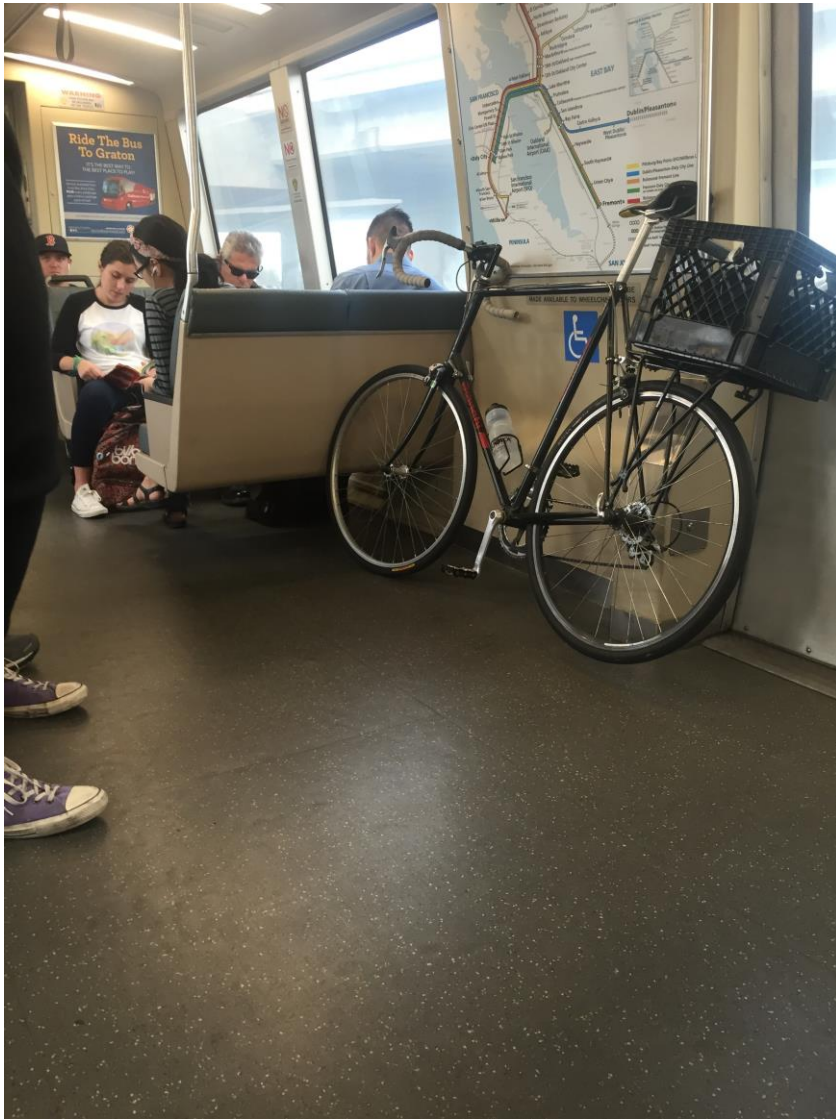
GET CLIPPER.
LOAD IT. TAG IT. GO.





Access









< Messages (2) **BART** Details

Friday 7:21 AM

2 elevs out of svc PHIL bay point plat elev and BALB stn elev.

Friday 8:31 AM

1 elev out of svc PHIL bay point plat elev.

1 elev out of svc PHIL bay point plat elev.

Friday 10:03 AM

2 elevs out of svc CIVC plat elev and PHIL bay point plat elev.

3 elevs out of svc CIVC plat elev, PHIL bay point plat elev and FRMT stn elev.

2 elevs out of svc PHIL bay point plat elev and FRMT stn elev.



