

NEW MODELS FOR A MAKER ECONOMY:

PDR AND THE PLANNING CODE

Corey Teague

San Francisco Planning Department

October 21, 2015

San Francisco
Planning

WHAT HAS PLANNING DONE TO SUPPORT PDR?

PDR Districts Prohibit:

- Residential
- Office

PDR Districts Restrict:

- Retail
- Institutional

Zones to protect PDR in these districts

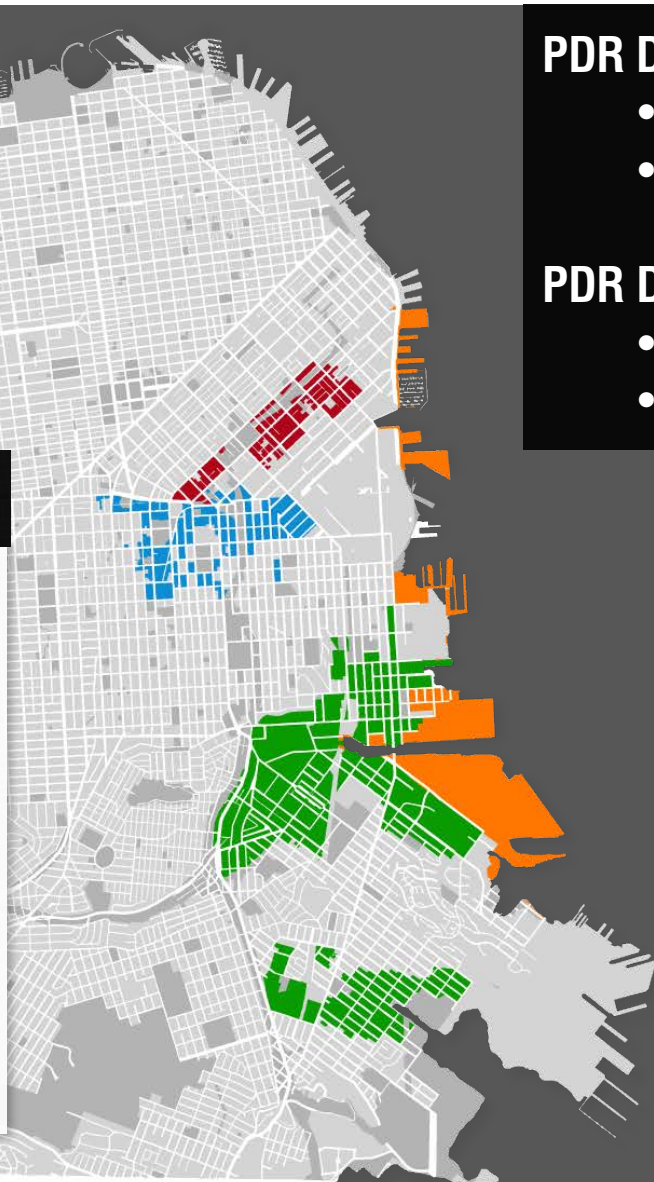
1,274 *total acres* **5.6%** of
City Land

SLI and SALI **90**

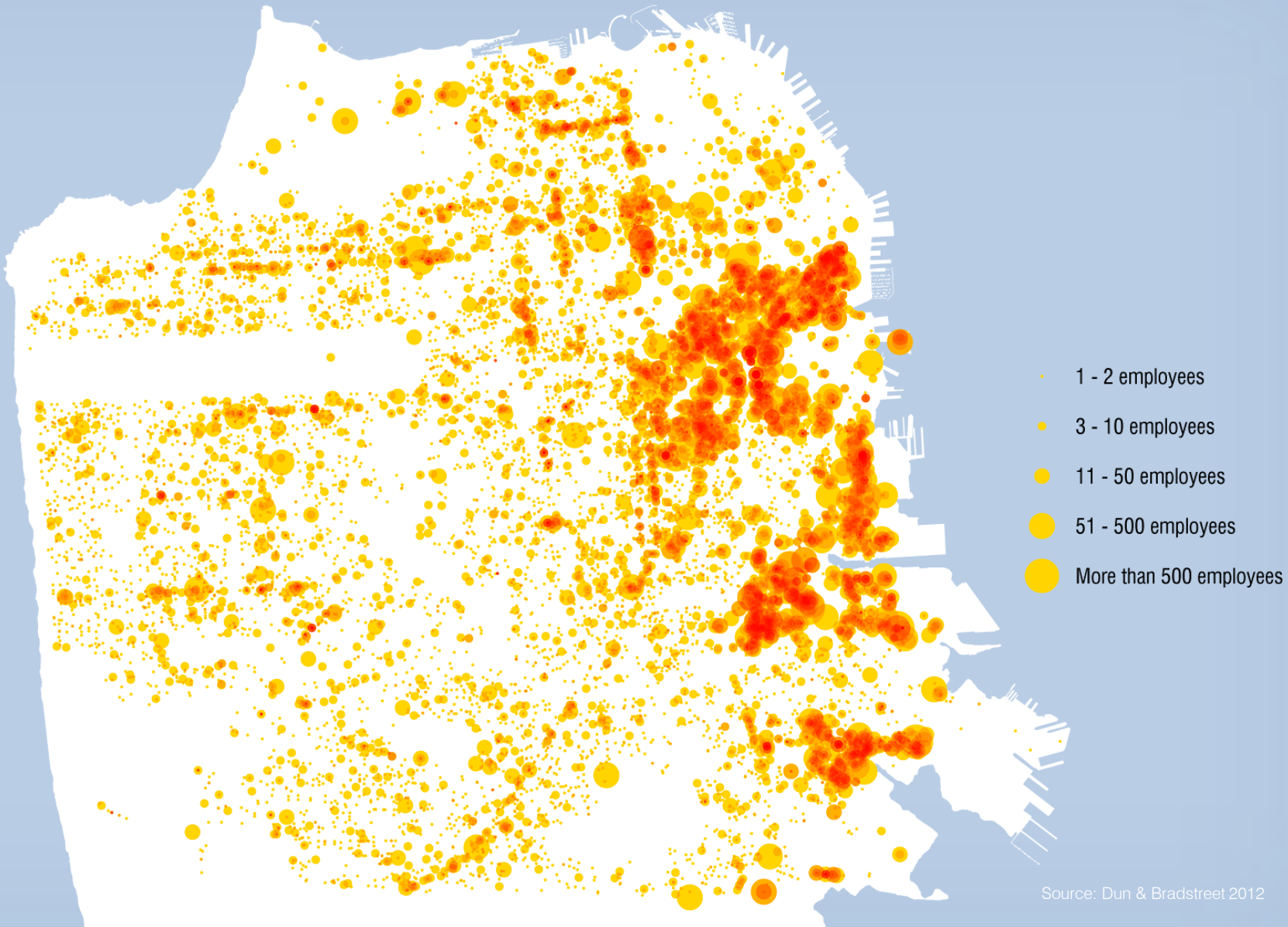
PDR in Mission / Showplace **140**

Industrial Port Land **406**

PDR in Central Waterfront / Bayview **638**



LOCATION OF PDR JOBS



LOCATION OF PDR JOBS

33%

in Residential Districts

33%

in Unprotected Districts

33%

in “Protected Districts”

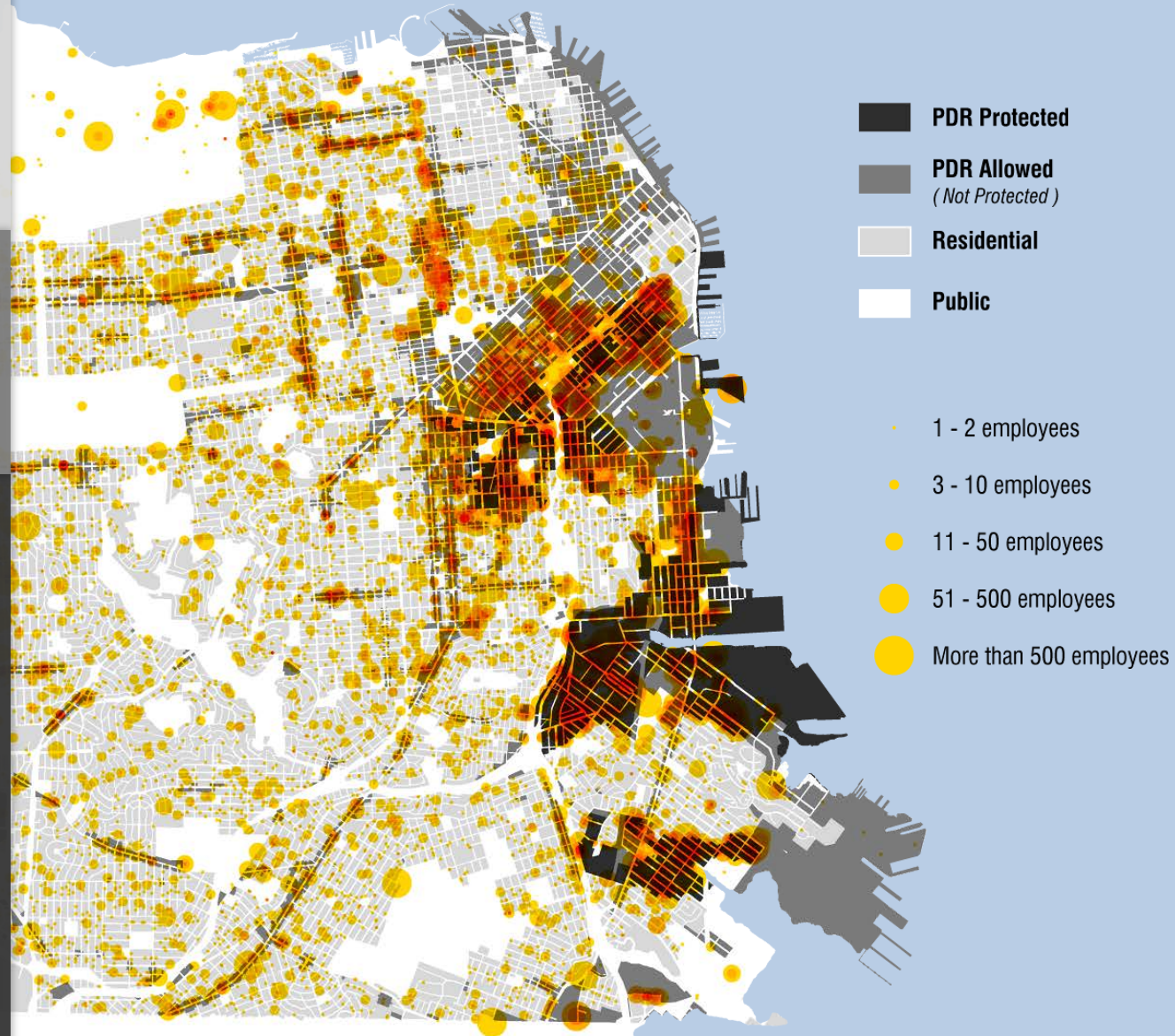
PDR-1 and PDR-2 (2008) **18,000**

SLI (1989) **1,400**

SALI (2013) **1,600**

M-2 on the Port **1,200**

Source: Dun & Bradstreet 2012



PDR ASSISTANCE STRATEGIES

- Innovative Industries SUD
 - American Industrial Center on 3rd Street
 - Permits office above the ground floor
 - Permits a higher level of retail (per UMU District)



PDR ASSISTANCE STRATEGIES

- Cross Subsidization
 - PDR-1-G & PDR-1-D
 - > 20,000sf lot
 - Vacant (< .3 FAR)
 - North of 20th St
- ↓
- Up to 2/3 office
 - At least 1/3 PDR
 - PDR business plan
 - Annual reporting



PDR ASSISTANCE STRATEGIES

- Food, Fiber and Beverage Processing
 - Improves regulations on breweries
 - (not distilleries)
- Limits on office conversions in Historic buildings
- Central SoMa PDR conversion moratorium
- Uptick in enforcement of illegal PDR conversions
 - New “hybrid” models present challenges

PDR ASSISTANCE STRATEGIES

- Accessory uses generally must be:
 - No more than 1/3 of the area of principal use
 - “Incidental and subordinate to” the principal use
- Code amended to allow grouping of accessory PDR retail on the same property

CASE STUDY:

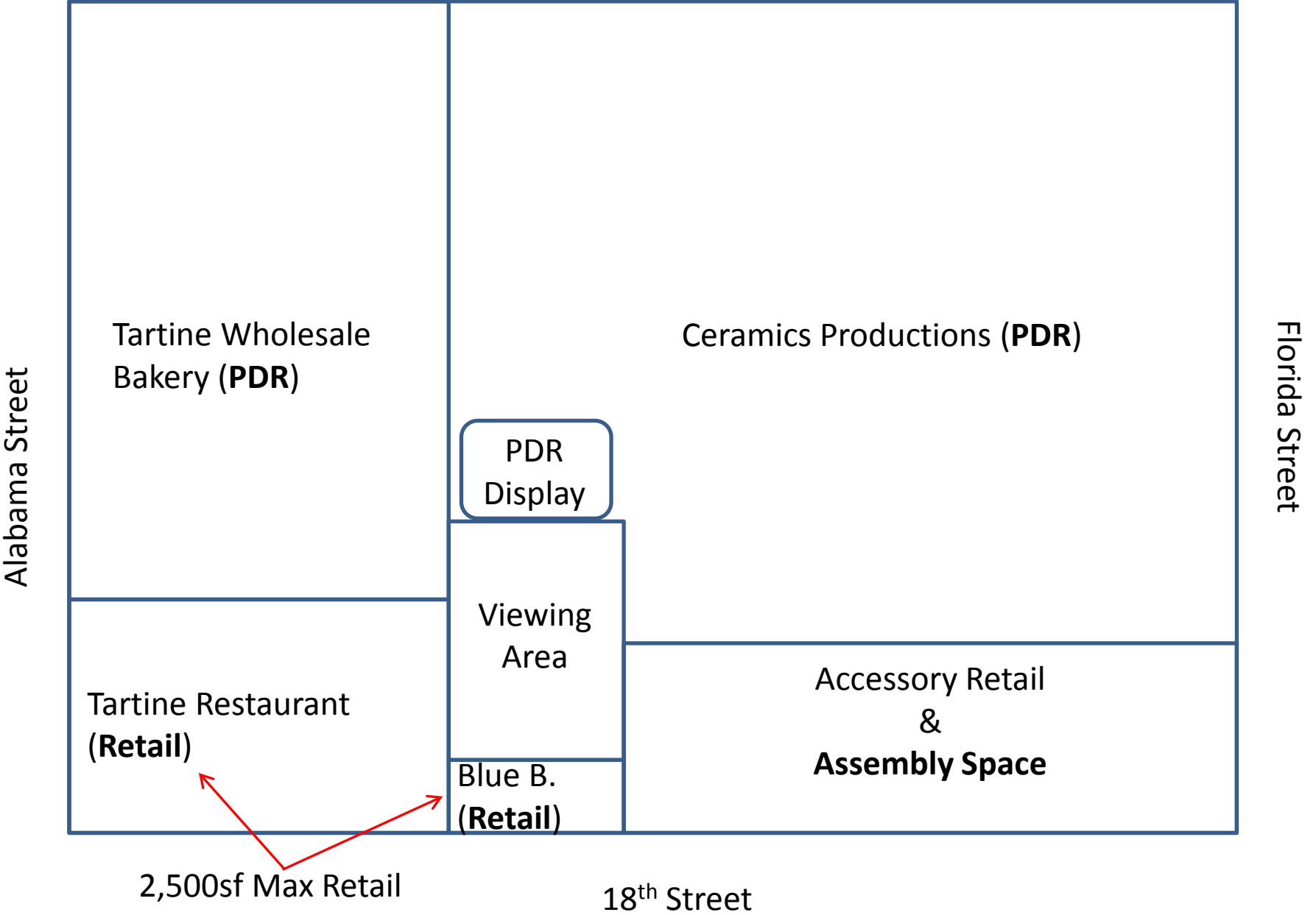


HEATH CERAMICS

San Francisco
Planning

Source: DesignSponge.com

PDR + Retail + Assembly + Accessory Retail = Heath Ceramics/Tartine



MISSION LAUNDRY



Source: Journeys in Light, Steve Carver

CONVERSION TO HEATH CERAMICS



Source: Journeys in Light, Steve Carver

HEATH CERAMICS KILNS



Source: Journeys in Light, Steve Carver

HEATH CERAMICS KILNS



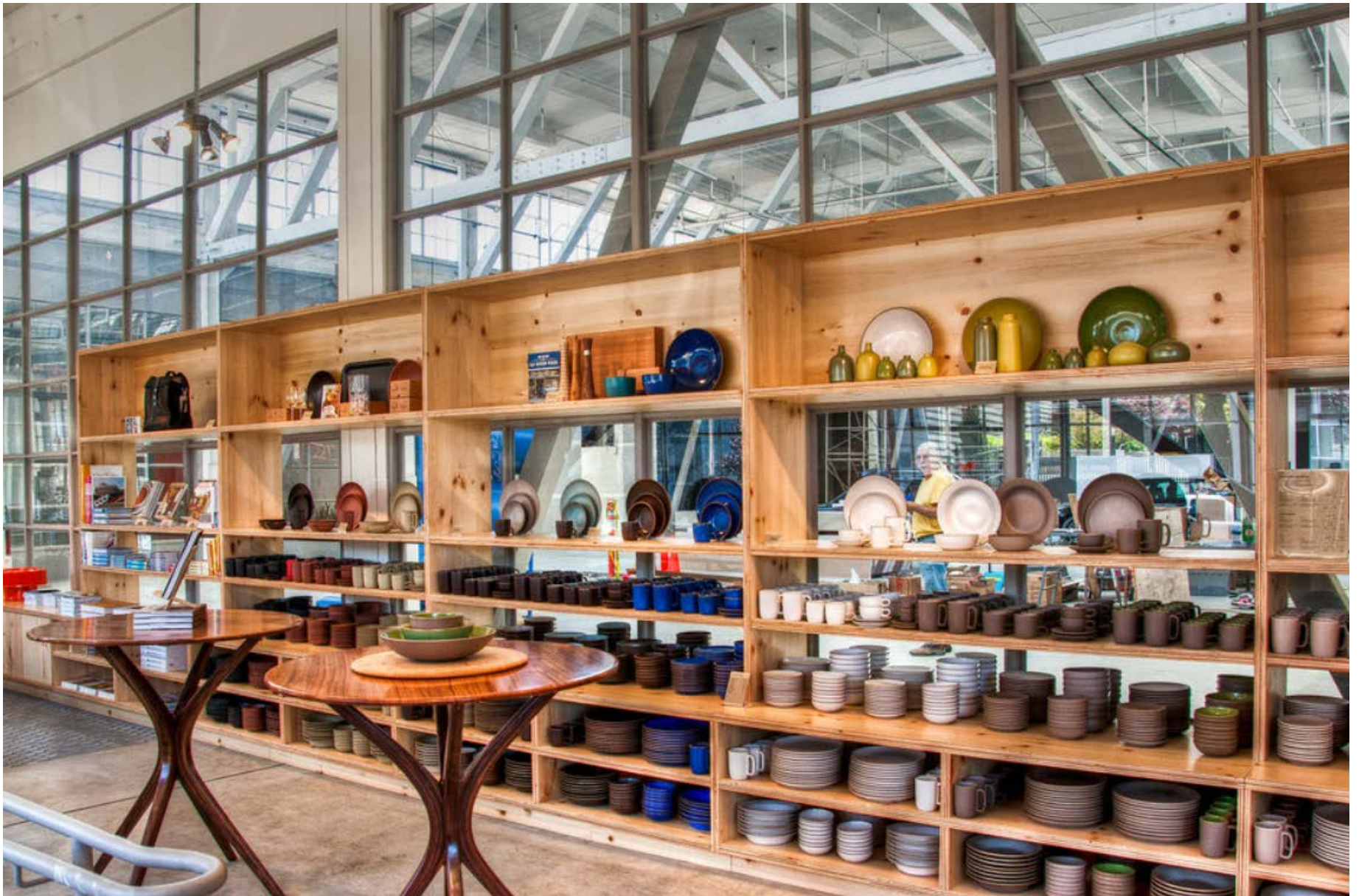
Source: Journeys in Light, Steve Carver

RETAIL BLUE BOTTLE SPACE



Source: Journeys in Light, Steve Carver

HEATH CERAMIC RETAIL SPACE



Source: Journeys in Light, Steve Carver

HEATH CERAMIC RETAIL/ASSEMBLY



Source: Journeys in Light, Steve Carver