



and
SOCIAL RESILIENCE



ON ALL SCALES



REBUILD



TIME TO THINK



INVEST IN
THINKING



THE PRESIDENT'S CLIMATE ACTION PLAN

Executive Office of the President

June 2013



INVEST IN THINKING

Hurricane Sandy
Rebuilding Task Force

HURRICANE SANDY REBUILDING STRATEGY

Stronger Communities, A Resilient Region

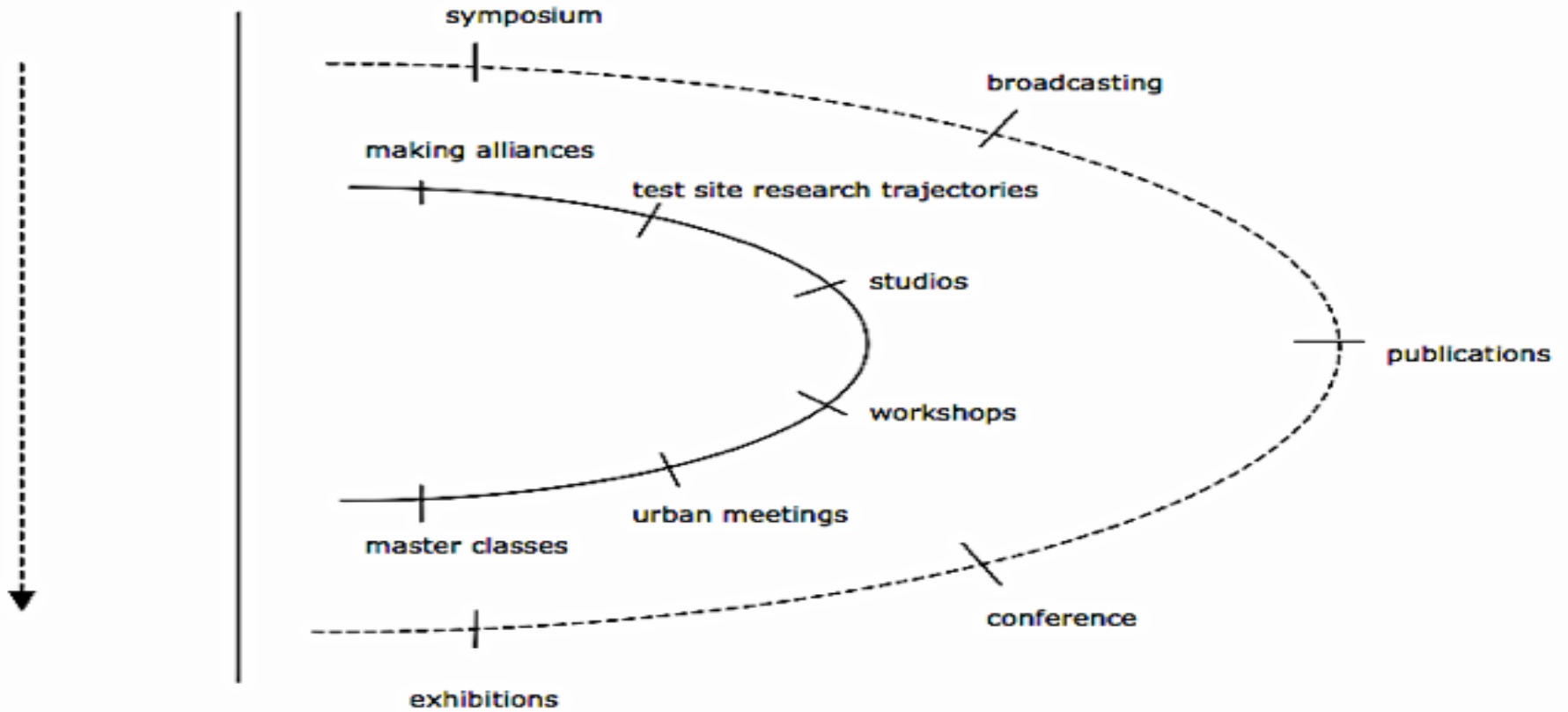


August 2013

Time to think - SABBATICAL DETOUR MODEL

REGULAR PROCESS

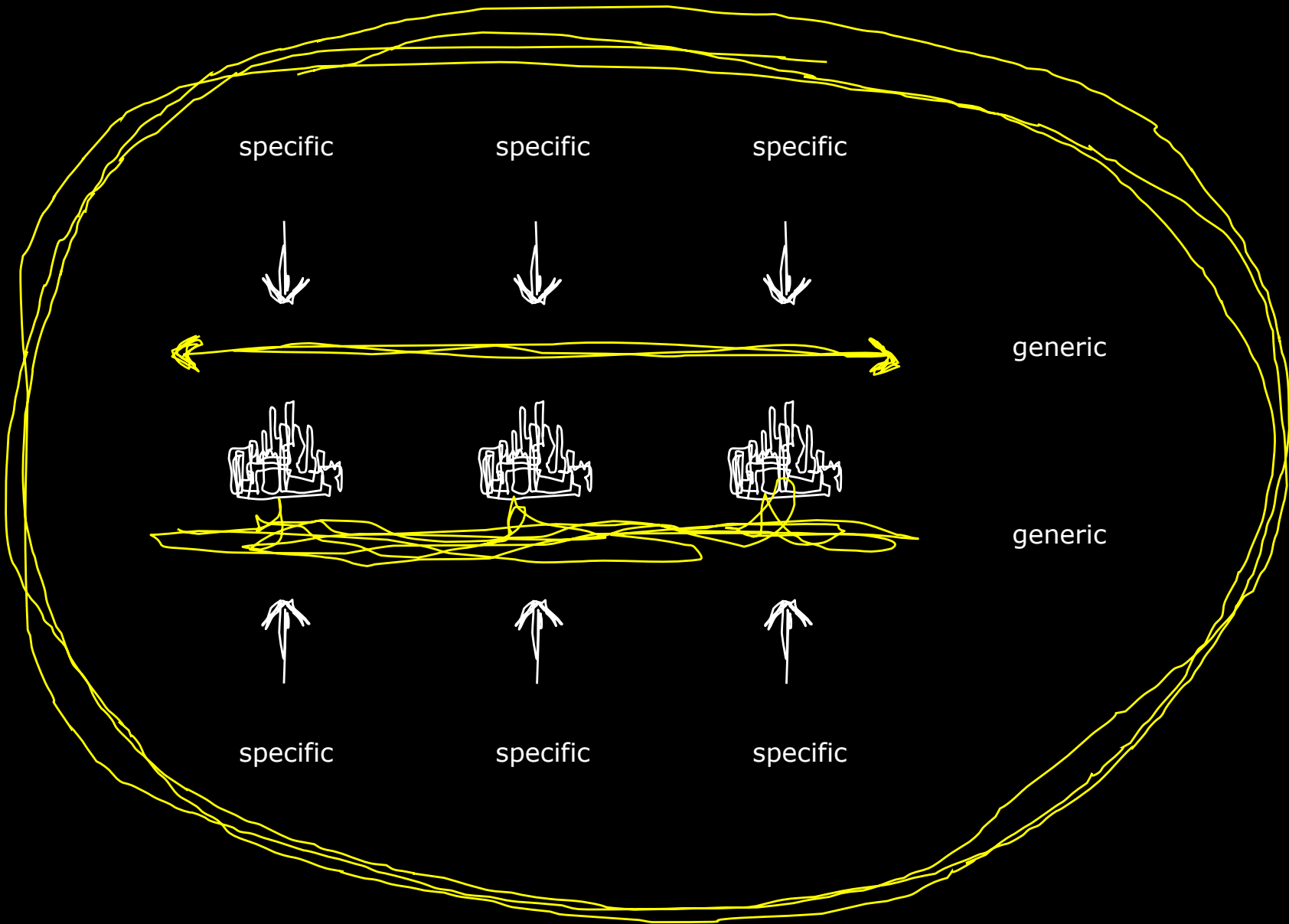
SABBATICAL DETOUR



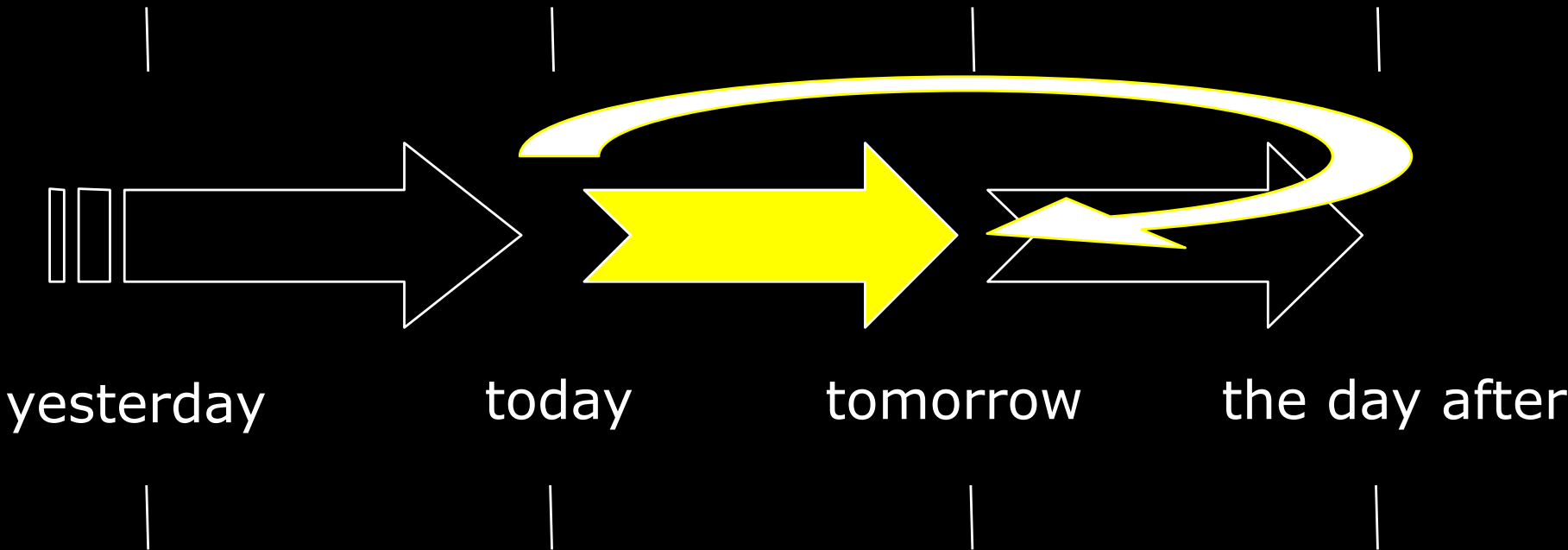
-IABR

+IABR

SPECIFIC - GENERIC



RESILIENCE NECESSITY



Remember the '80s? Democrats do. Republicans should.

The Republicans of 2013 look a lot like the Democrats of 1989 — shut out of the presidency, beholden to a shrinking base and on the wrong side of major demographic shifts in the country.

Argument two Democratic strategists and Elaine make in an essay with Politics of the fall edition of Journal of Ideas. Republican hoping to win the House in 2016, it's must-read.

Obama and Kamal... visit a famed essay 1989 about their political and policy. The Politics Democrats and the

essay, Galston and e, "we debunked the

QUOTE OF THE WEEK



MICHAEL REYNOLDS/EUROPEAN PRESSPHOTO AGENCY

"Because really, deep down, he would have been an architect had he been as talented and creative as all of you."

First lady Michelle Obama, speaking Friday about her husband at the Cooper-Hewitt Design Awards ceremony, according to a pool report

BEST THING THAT HAPPENED TO REPUBLICANS



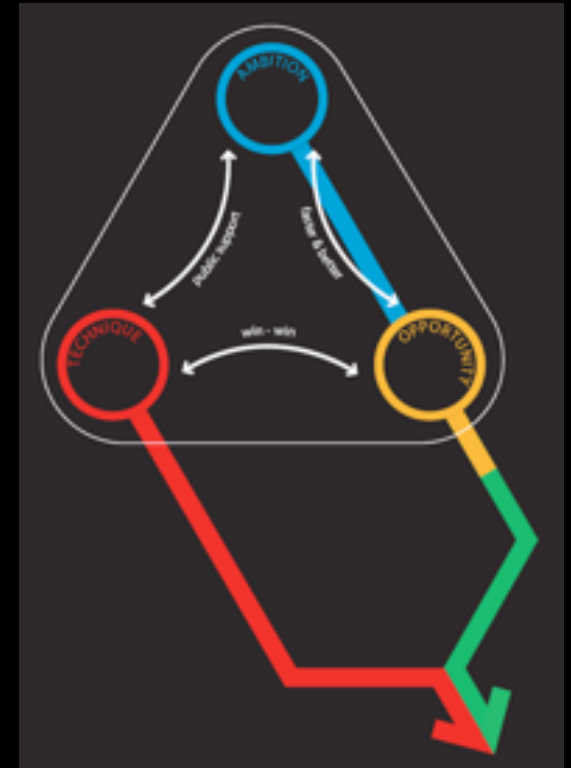
Obamacare, on the eve of its implementation, continued to poll poorly. A new Washington Post-ABC News poll shows a majority of Americans (52 percent) oppose Obamacare, while just 42 percent support it. This is the law that President Obama and Democrats are going to be judged on in the 2014 and 2016 elections, and Americans are still leaning against it. If that continues after implementation — when the law really starts to matter to people — it could spell very bad things for Democrats.

BEST THING THAT HAPPENED TO DEMOCRATS

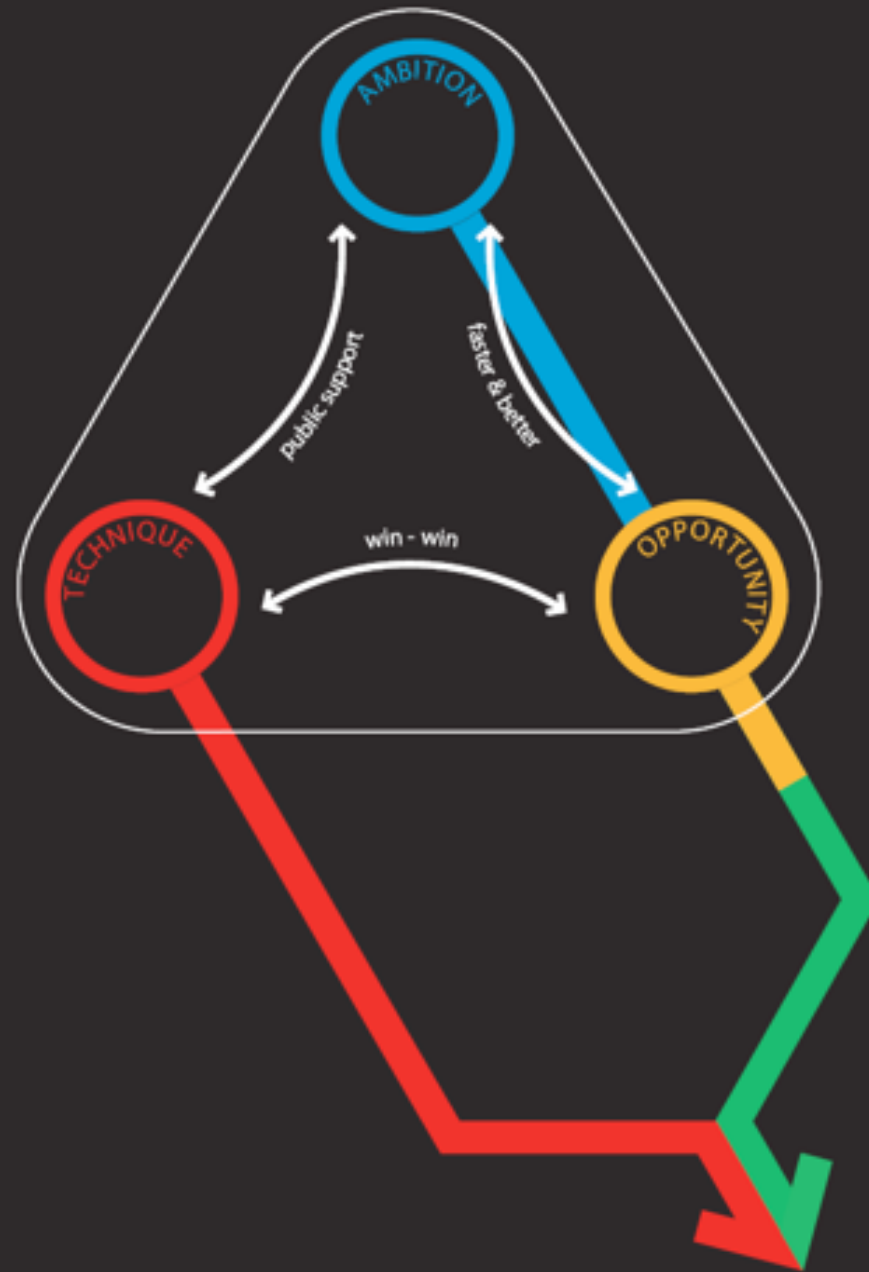


The GOP began to overreach on defunding Obamacare after the House voted Friday to pass

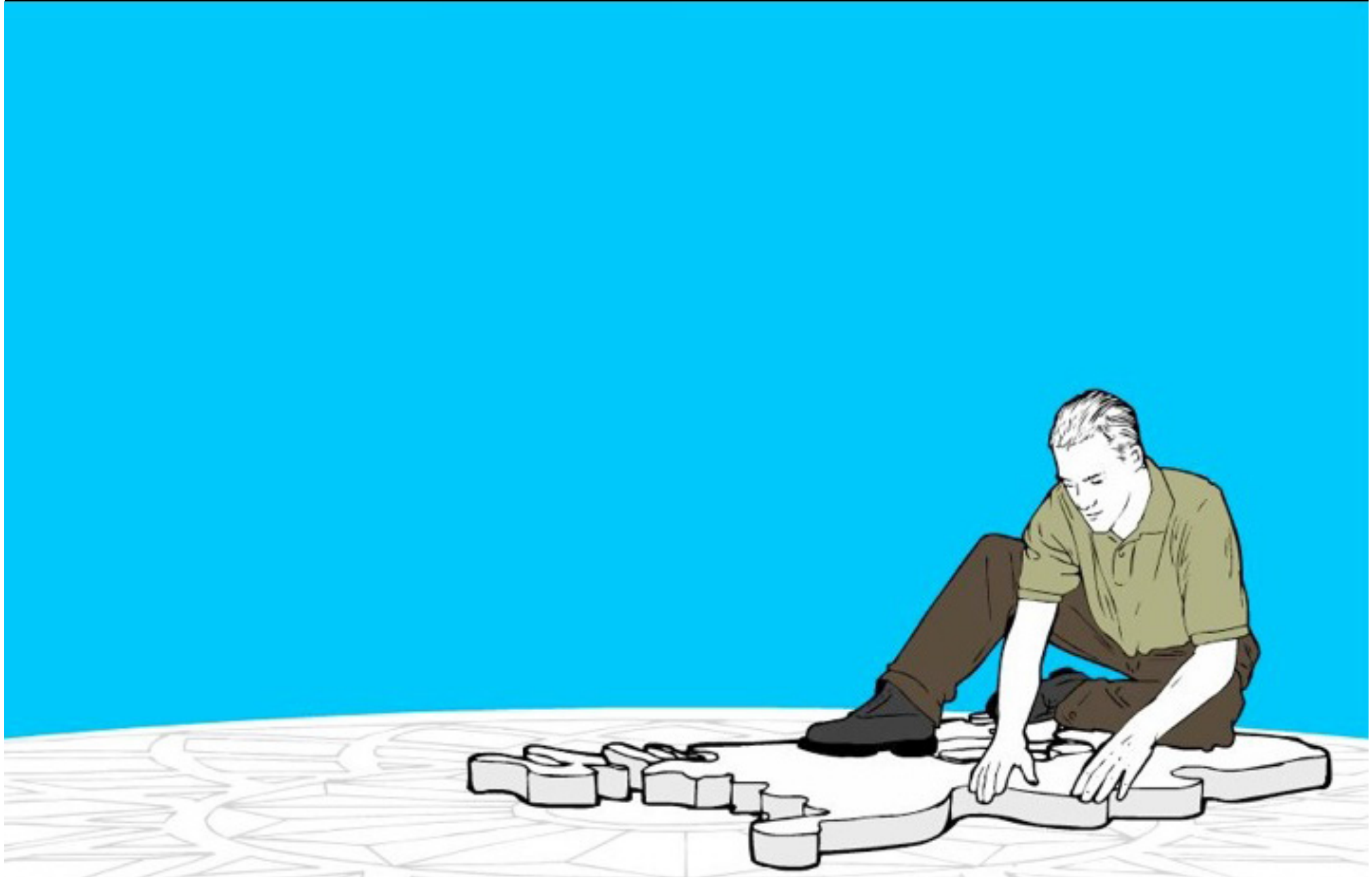
DESIGN AND INNOVATION IN PLANNING PROCES



DESIGN IN PLANNING PROCES



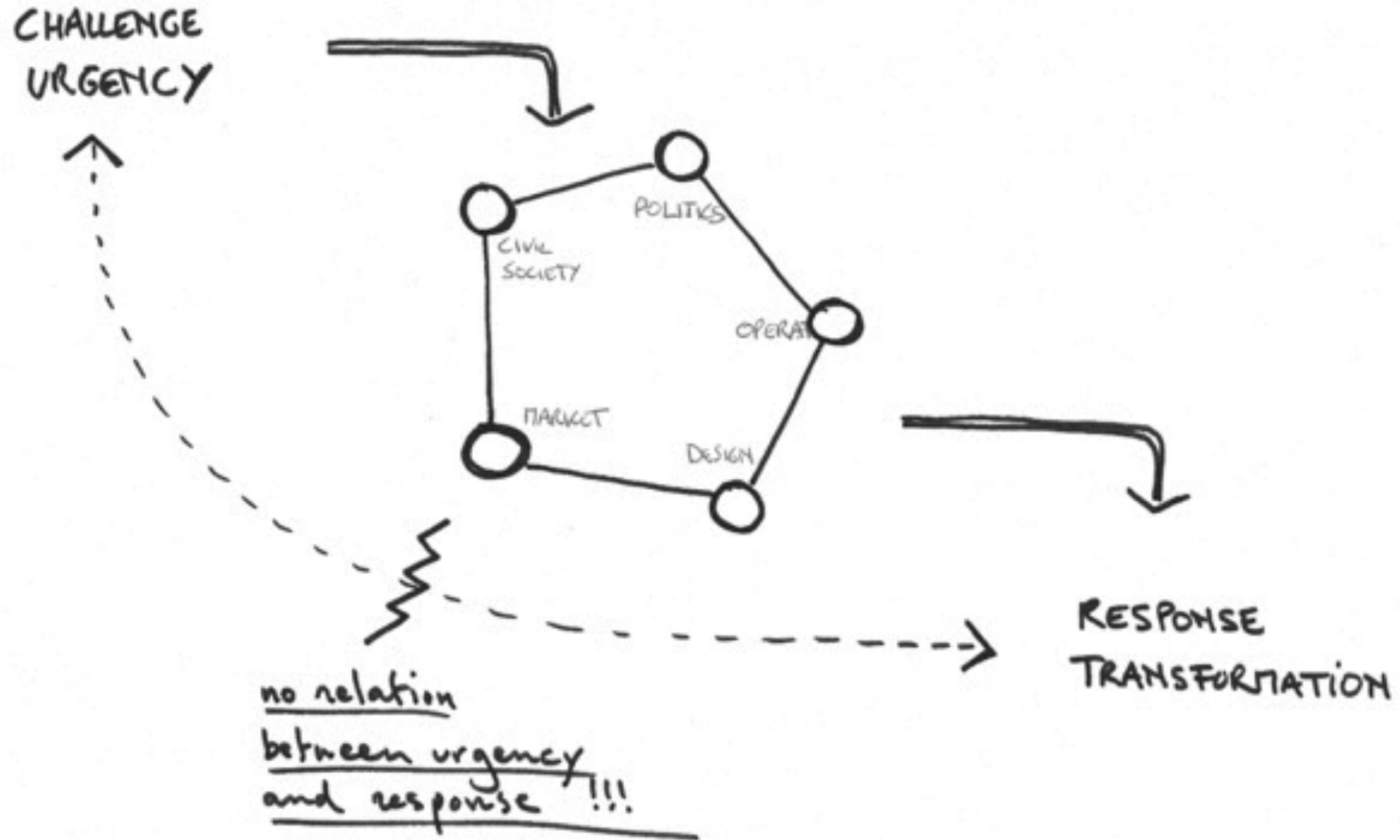
A CULTURE OF DESIGN, BY DESIGN



CHANGING ROLES FOR ALL ACTORS



(DIS)CONNECT

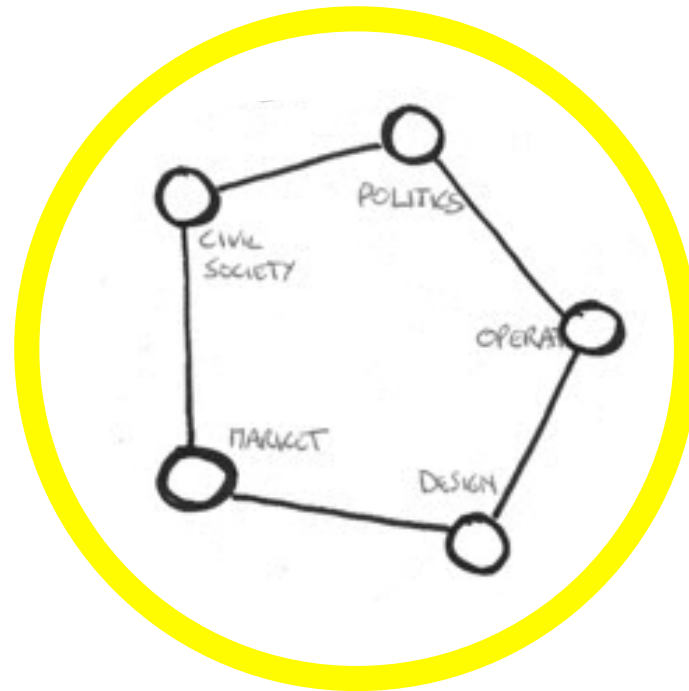


REMEMBER...

1222 - the first collaboration started in the Utrecht area, where 20 communities worked together on the local embankment



SPECIFIC FOCUS: ALLIANCES



POLITICS, CIVIL SOCIETY, OPERATORS, MARKET, DESIGNERS

ALLIANCES

By definition an alliance is formed by parties with common interests who are making everyone focus on implementing the common. They initially tend to minimize their differences in the alliance.



00:00

HD

REBUILD BY DESIGN

Promoting Resilience
Post-Sandy
Through Innovative
Planning and Design

An Initiative Of
The President's
Hurricane Sandy
Rebuilding Task Force

What is Rebuild by Design?

Innovating Together to Create a Resilient Region



Rebuild by Design

Goals:

- Contribute to a better understanding of the Sandy region
- Strengthen the collaboration within governments and with business, academic and communities
- Ignite innovation, out of the box perspectives and address new developments and key projects
- Address on the ground planning and design solutions and align these with implementation through CDBG-DR and other public and private funding.

Deliverables:

- Comprehensive regional analysis
- List of key projects
- Collaborative process with all stakeholders
- Winning projects to receive CDBG-DR and other funding
- Successful implementation by collaboration across the region
- National approach for resilience and rebuilding

Rebuild by Design

Turned the prize process around:

- No ask for solutions to a pre-defined problem
- But a clear process of:
 - Attracting world wide talent
 - Intense collaboration across the Sandy affected region with all stakeholders
 - Research by design to get to a better understanding of the region's vulnerabilities, interdependencies and communities' needs
 - Determine, develop and design the key opportunities to build resilience across the region
 - And select the best to be implemented with CDBG-DR support

www.rebuildbydesign.org

REBUILD BY DESIGN

...one of CNN's 10 Best Ideas of 2013

Process, Talent, Funding

BIG Team
HR&A Advisors / Cooper
Robertson Partners
Interboro Team
MIT+ZUS+Urbanisten
OMA Team
PennDesign/Olin
Sasaki, Rutgers, Arup
Scape Team
WB Unabridged w/Yale&Arcadis
WXY/West8

**An Initiative of the
President's
Hurricane Sandy Rebuilding
Task Force**

**In Collaboration With
NYU's Institute for Public
Knowledge
Municipal Art Society
Regional Plan Association
Van Alen Institute**

**Lead Supporter
The Rockefeller Foundation**

**With Support From
Deutsche Bank Americas
Foundation
Hearst Foundation
Surdna Foundation
The JPB Foundation
The New Jersey Recovery
Fund**

REBUILD BY DESIGN

Hurricane Sandy exposed complex, interdependent, regional problems throughout the Northeast: infrastructural governmental, economical, ecological, and social.

Complex problems need innovative solutions. Through innovation, we are building to a new standard, both on the ground and in policy design.

PROCESS FUNDING TALENT

Compete

+ HUD
\$ Federal

- 148 teams competed
- Interdisciplinary from 15 countries: architects, engineers, scientists
- 10 selected

Research

+ Institute for Public Knowledge, NYU
+ Municipal Art Society
+ Van Alen Institute
+ Regional Plan Association
+ Research Advisory Group
\$ Philanthropy

- Studied region vulnerabilities
- Met with 57 government entities
- Met 145 people from 74 organizations
- Held 7 community conversations with community members and leaders
- Toured 30 neighborhoods
- Identified 41 opportunities

Design

+ State & Local Gov
+ Community Orgs
+ Local Stakeholders
\$ Philanthropy

- 10 projects selected
- Teams work with states, mayors, community stakeholders, and experts
- Proving concepts for design solutions
- Pushing innovation while reflecting local, state, and regional priorities

IMPLEMENT

+All
\$ Federal
\$ Other Partnerships

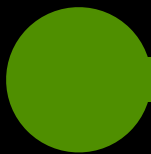
- Rebuild smarter through design
- Drive change through how we build and how we legislate

Compete

Research

Design

Implement



Launch
June 20 2013

Select 10 Teams
August 8 2013

Present Research and opportunities
October 28 2013

Present final designs
April 3 2014

Select 6 winners
June 2 2014

A group of people are gathered around a table, focused on a large architectural plan or map. The plan shows a grid of streets and various colored lines and markers. One man on the left is pointing at the plan, while a woman in the center is using a yellow pencil. Other people are standing around the table, some looking at the plan. The scene is set in what appears to be a workshop or meeting room. The word "PROCESS" is overlaid in large white letters in the center of the image.

PROCESS

Rebuild by Design

Design Opportunities

10 TEAMS

1 REGION



MODIFIED SHALLOWING JAMAICA BAY, NY

LANDSCAPE

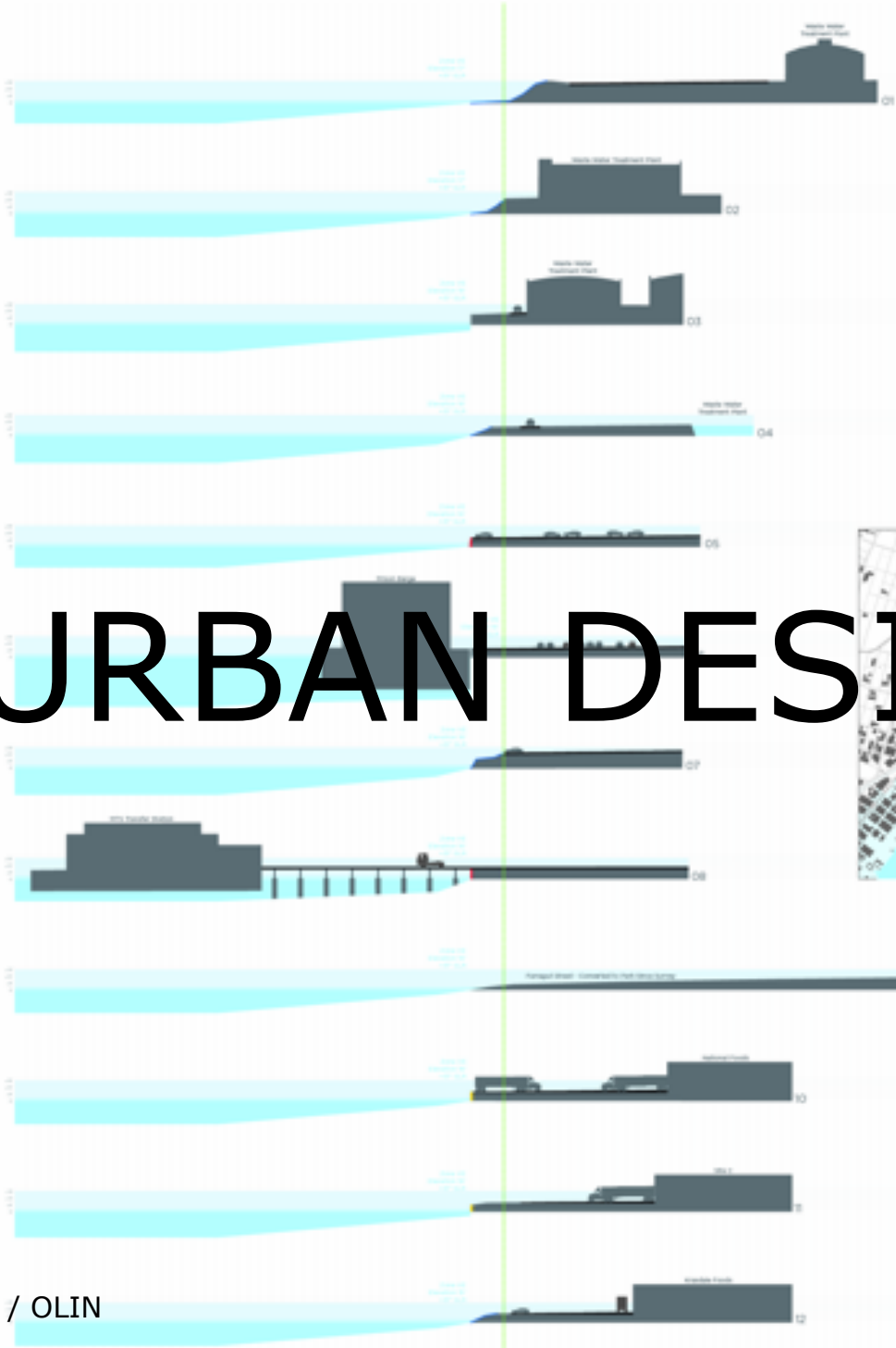
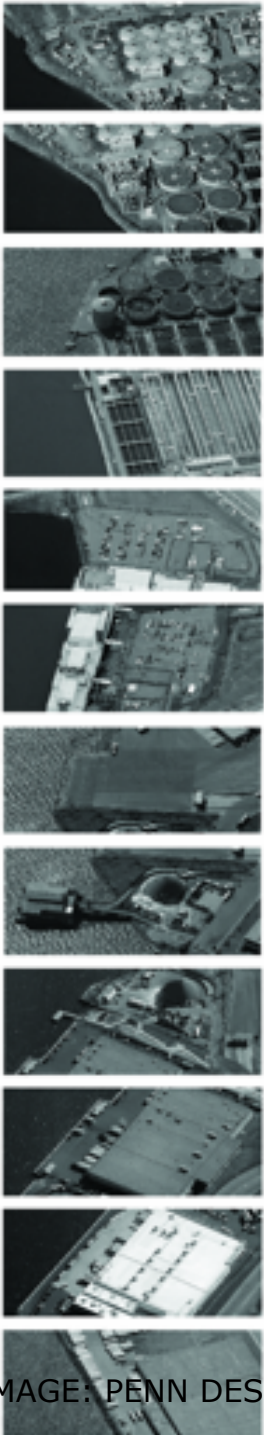


IMAGE: SCAPE TEAM



ARCHITECTURE

IMAGE: OMA TEAM



EXISTING CONDITIONS AND FUTURE RISK | 1"=40'

- 2050 SEA LEVEL RISE (90% - 31")
- 100 YEAR FLOOD ELEVATION
- 30' EASEMENT
- EDGE: RIPRIAP/UNPROTECTED GENTLE SLOPE
- EDGE: RIPRIAP/UNPROTECTED STEEP SLOPE
- EDGE: VERTICAL BULKHEAD
- EDGE: RELIEVING PLATFORM
- EDGE: PILE-SUPPORTED PLATFORM
- EDGE: MISCELLANEOUS STRUCTURE (TRESTLE, GANTRY, PIER)
- *all edge conditions as of 2006

URBAN DESIGN



Resist
Delay
Store
Discharge

Comprehensive Strategy

Landscape
levee
(Resist)

Pump (future)
(Discharge)

URBAN PLANNING

Zoning policy
(Delay)

Hard
infrastructure
Resist

Pump (existing)
(Discharge)

Green belt
(Storage)





REGIONAL APPROACH

SCALES and TIME



MATERIAL



FURNITURE



INFRASTRUCTURE



NEIGHBORHOOD



CITY



REGION



MEGA-REGION



1-5 YEARS

5-15 YEARS

15-25 YEARS

25+ YEARS

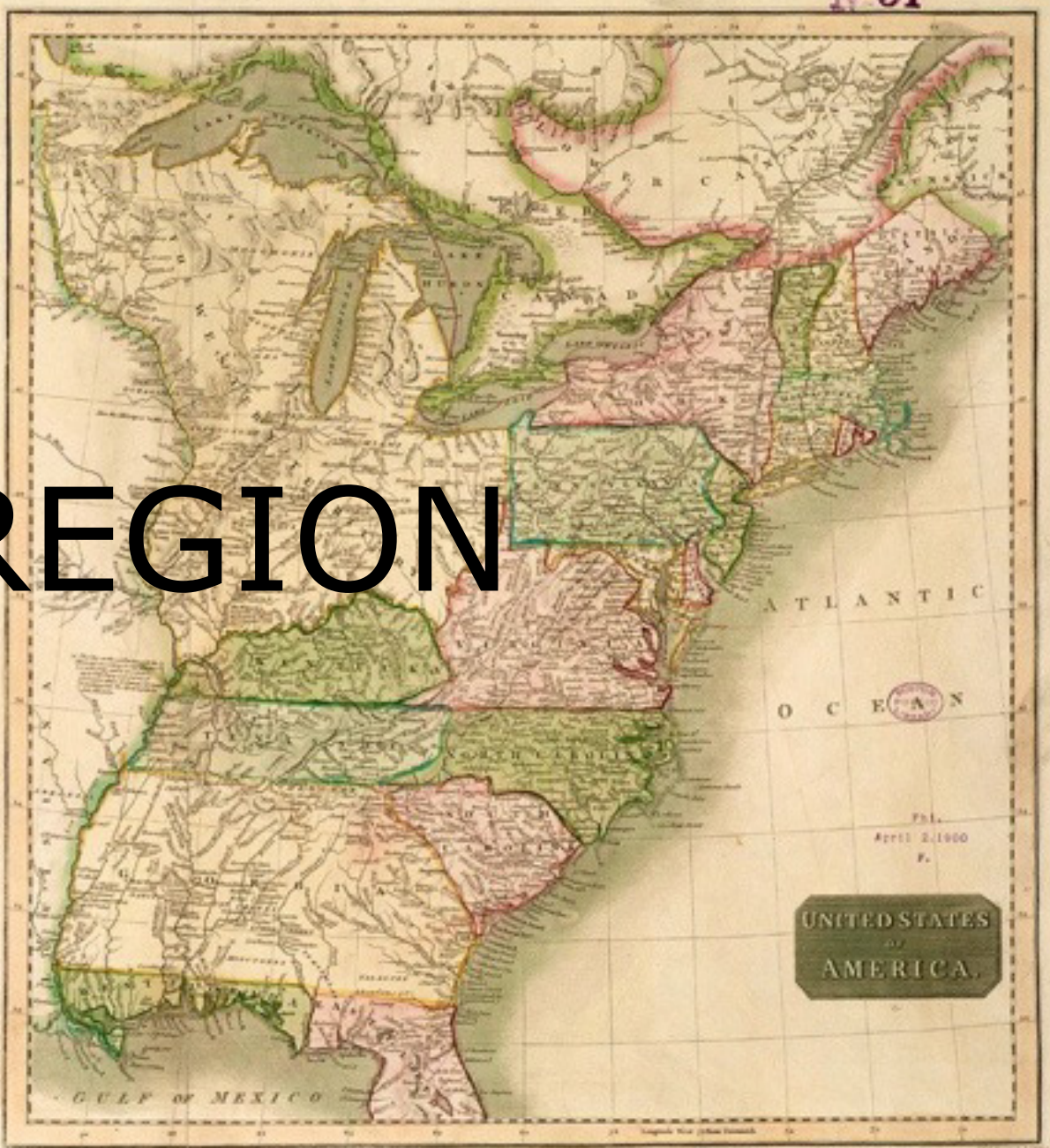
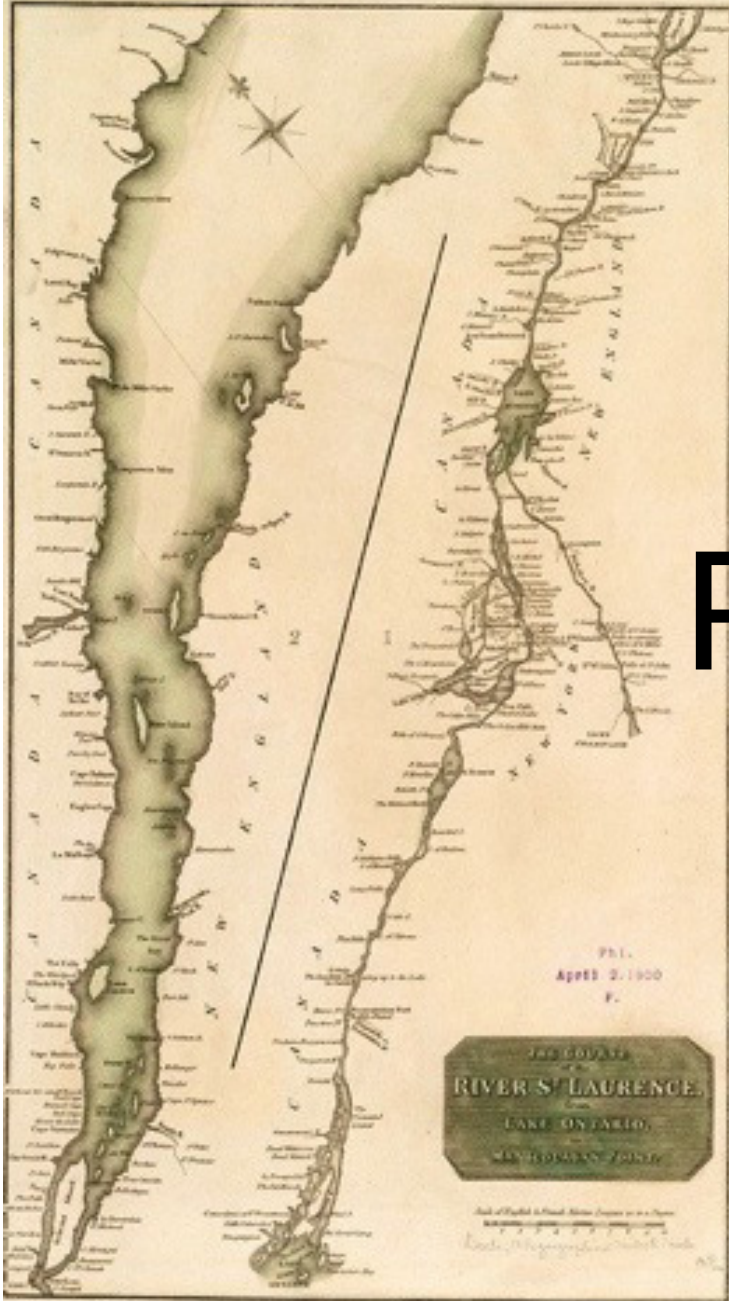
A large group of people, including men, women, and children, are gathered on a paved walkway that runs along a rocky shoreline. They are looking towards the water, which is calm and blue. In the background, there are trees, a house, and a clear blue sky. The word "RESEARCH" is overlaid in large, white, sans-serif capital letters across the center of the image.

RESEARCH

IMAGE: CAMERON BLAYLOCK PHOTOGRAPHY

No 34

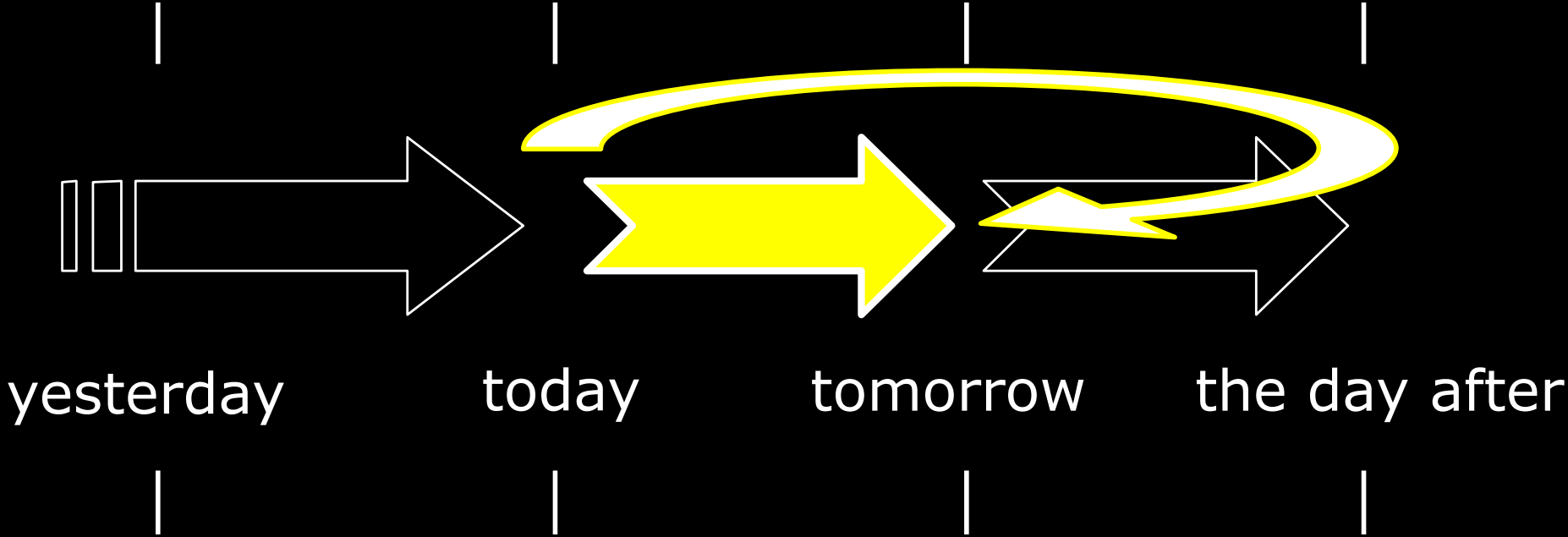
REGION





VISIT

NECESSITY



A photograph of Barack Obama in a crowd, embracing a woman. He is wearing a dark blue jacket with "Barack Obama" embroidered on it. The woman is also wearing a dark blue jacket. In the background, other people are visible, some wearing hats. The text "THE POLITICS AND" is overlaid in white, bold, sans-serif font across the center of the image.

THE POLITICS AND

MIT + ZUS + Urbanisten



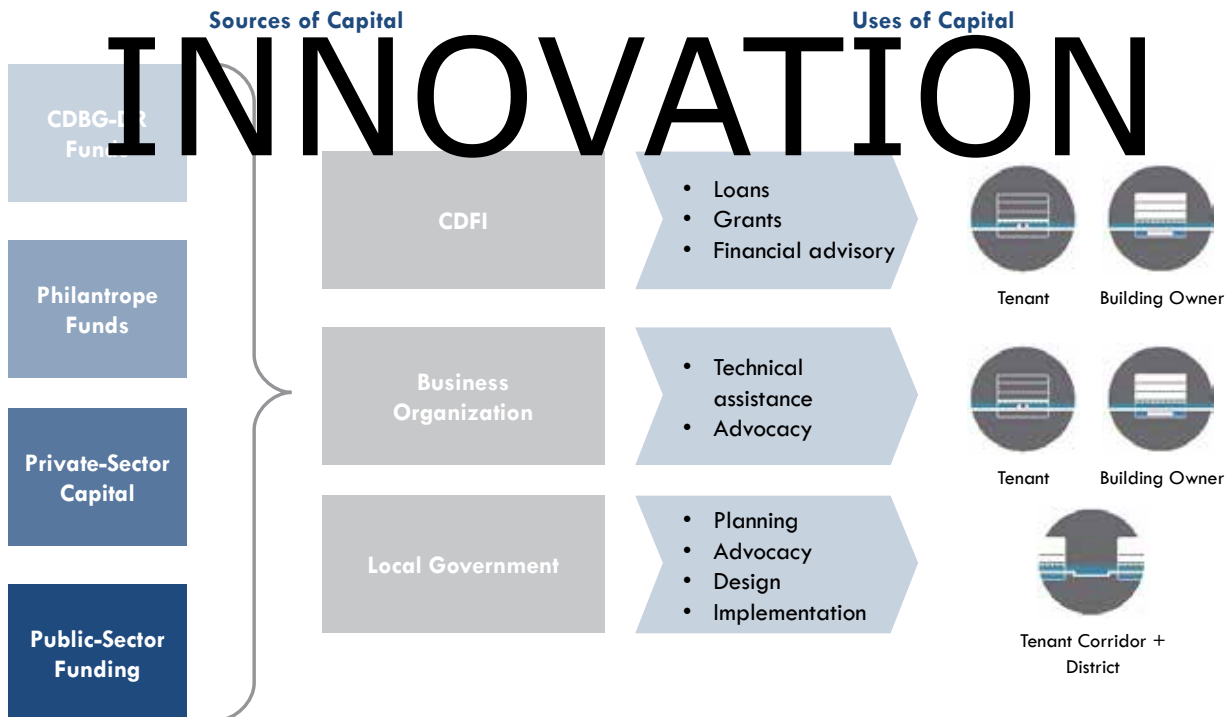
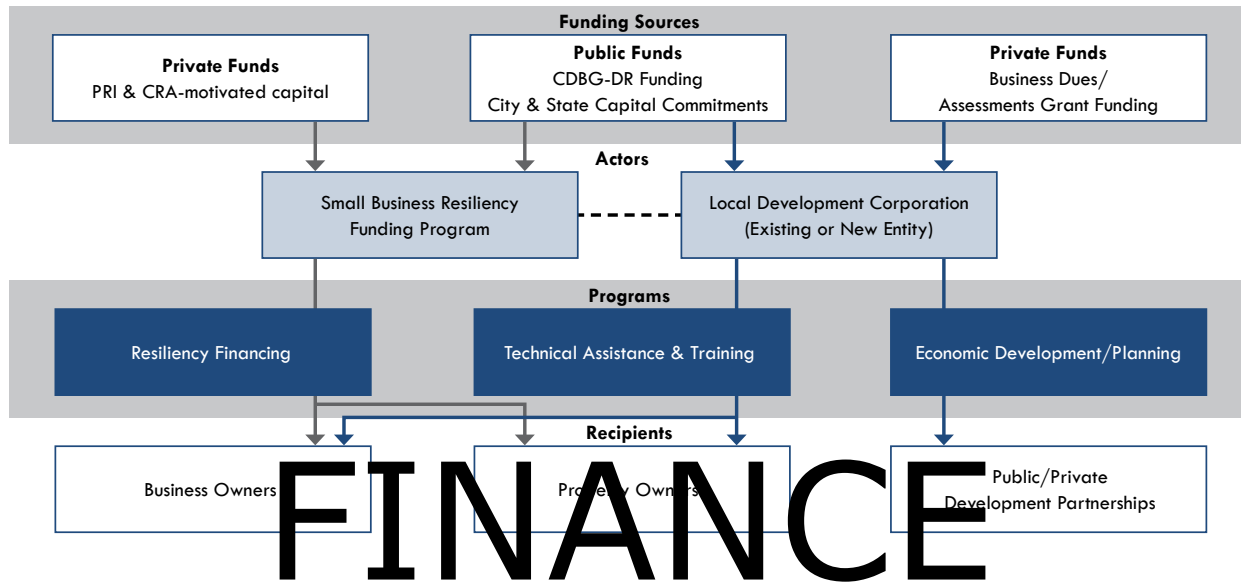
IMAGE: MIT, ZUS, URBANISTEN

MIT + ZUS + Urbanisten



IMAGE: MIT, ZUS, URBANISTEN

HR&A Advisors, Inc with Cooper Robertson and Partners



HR&A Advisors, Inc with Cooper Robertson and Partners



IMAGE: HR&A

REGIONALLY RELEVANT



ATLANTIC SEABOARD



SANDY AFFECTED AREAS



NEW JERSEY SHORE

