

# MITHŪN

ARCHITECTS + DESIGNERS + PLANNERS

MITHŪN

© Copyright Mithun, Inc. All Rights Reserved



© Copyright Mithun, Inc. All Rights Reserved.

Omer Mithun

MITHUN



San Francisco Planning + Urban Research Association  
a member-supported nonprofit organization

# IDEAS AND ACTION FOR A BETTER CITY

- ABOUT
- JOIN OR GIVE
- PUBLICATIONS
- EVENTS
- EXHIBITIONS
- FACILITY RENTAL
- BLOG

### SPUR PROGRAMS

- Community Planning
- Disaster Planning
- Economic Development
- Good Government
- Housing
- Regional Planning
- Sustainable Development
- Transportation

### POLICY INITIATIVES

- Climate Adaptation
- Future of Work
- Ocean Beach
- The Resilient City

## EVENTS

- EVENT CALENDAR
- GOOD GOVERNMENT AWARDS
- DINE + DISCOVER

- BUSINESS BREAKFASTS
- URBAN LEADERS FORUM
- YOUNG URBANISTS

- SILVER SPUR
- COMMUNITY
- SPUR M

### LUNCHTIME FORUM

## Understanding 68-foot buildings

Monday, November 28, 2011  
12:30 pm



zoned for 68-foot height  
68- and 70-foot buildings  
do these buildings  
look like? What are some construction design benefits of building this  
height? Come hear from architects **Michael Pyatok**, **Roger Gula** and **David Baker** as  
they discuss their experience with 68-foot buildings. Co-presented with the San Francisco  
Housing Action Coalition and the San Francisco Chapter of the AIA.

### LOCATION

654 Mission Street,  
San Francisco, CA 94105-4015  
[\[ map \]](#)

### ADMISSION

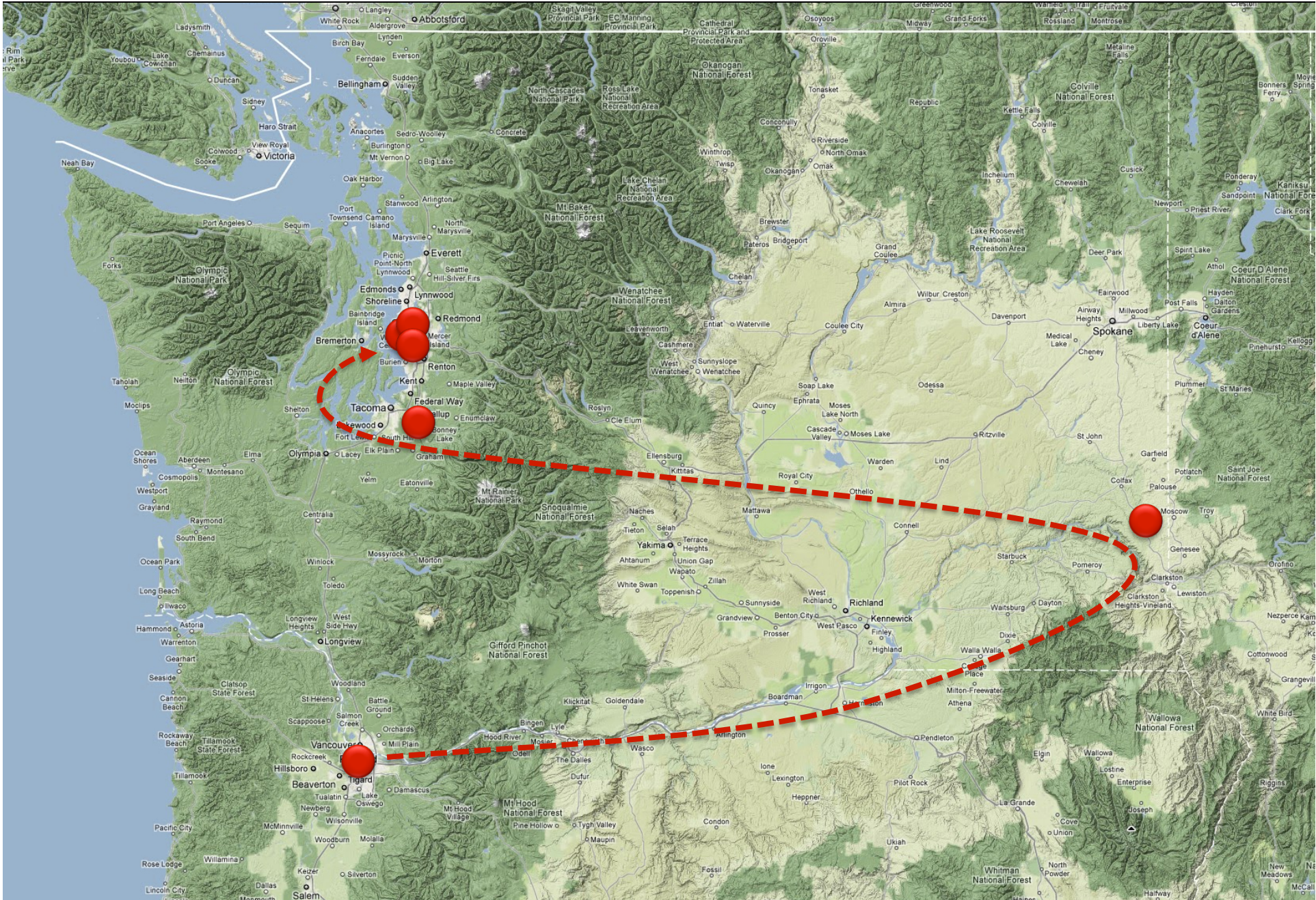
Free to members  
\$10 for non-members  
Okay to bring lunch



[SPUR Refund Policy](#)

MITHUN

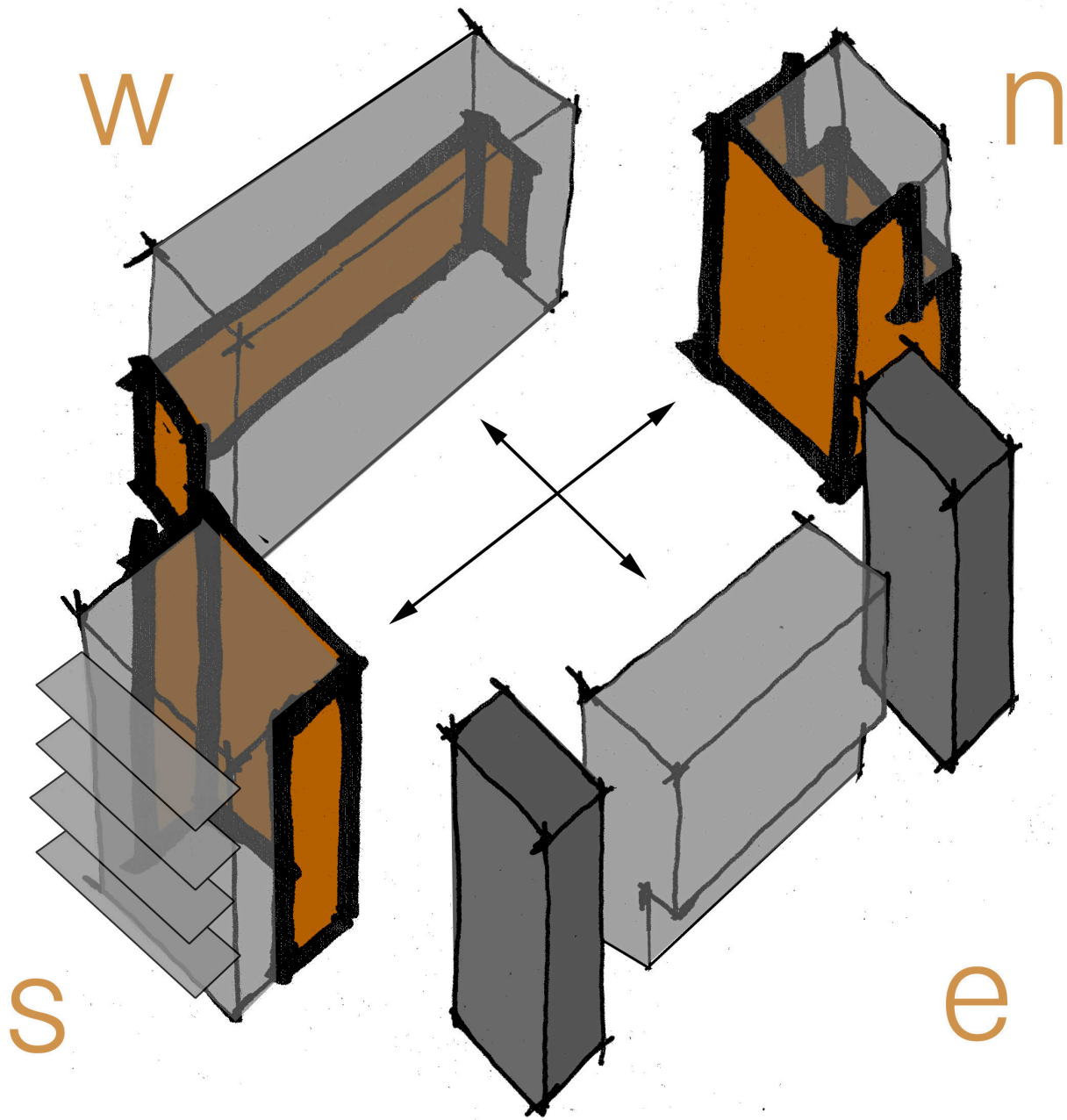
© Copyright Mithun, Inc. All Rights Reserved



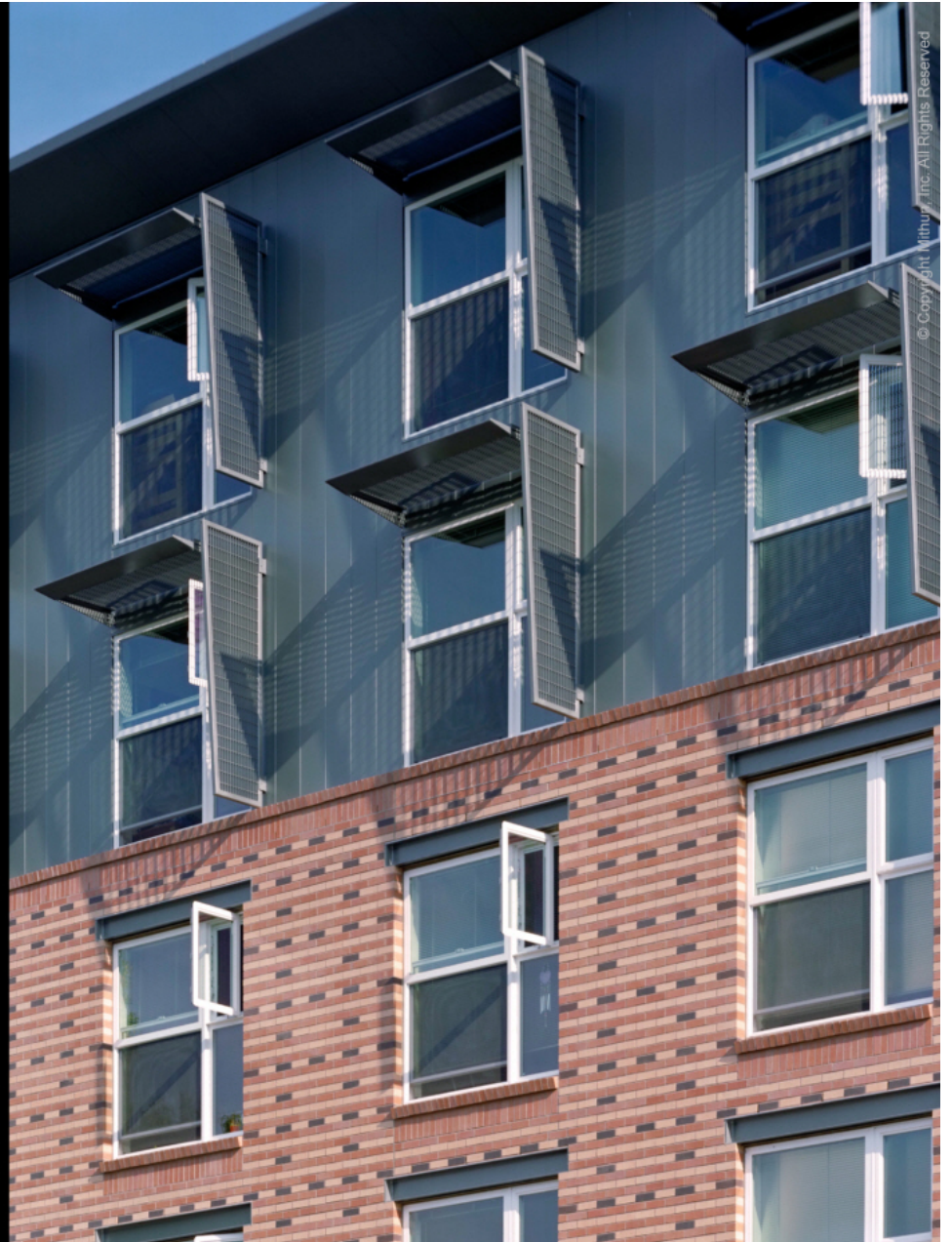
# PSU Epler Hall



PSU Epler Hall  
Portland, Oregon



PSU Epler Hall  
Portland, Oregon



PSU Epler Hall  
Portland, Oregon





PSU Epler Hall  
Portland, Oregon



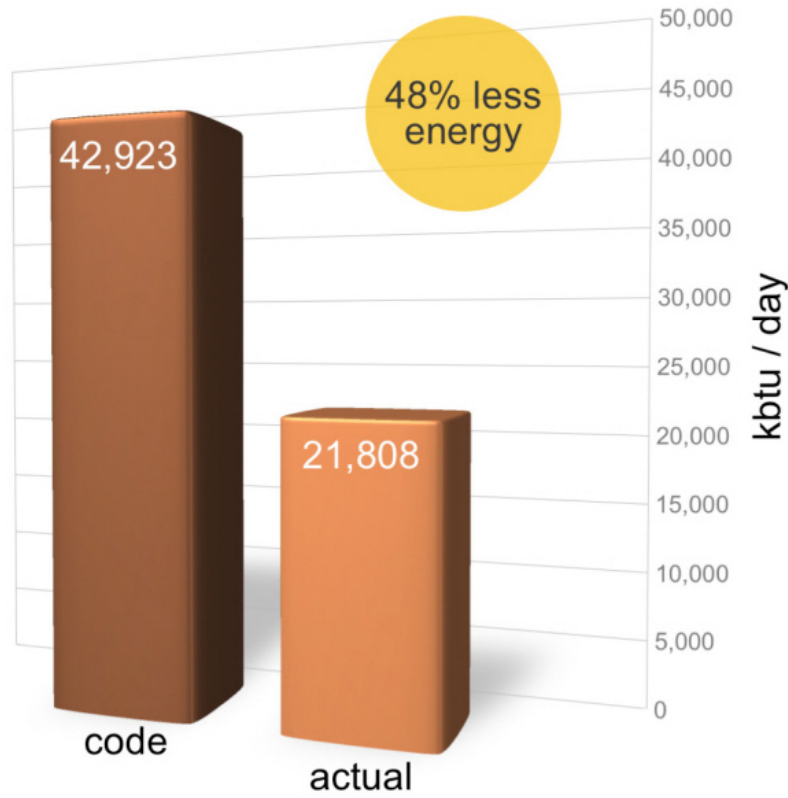


© Copyright Mithun, Inc. All Rights Reserved

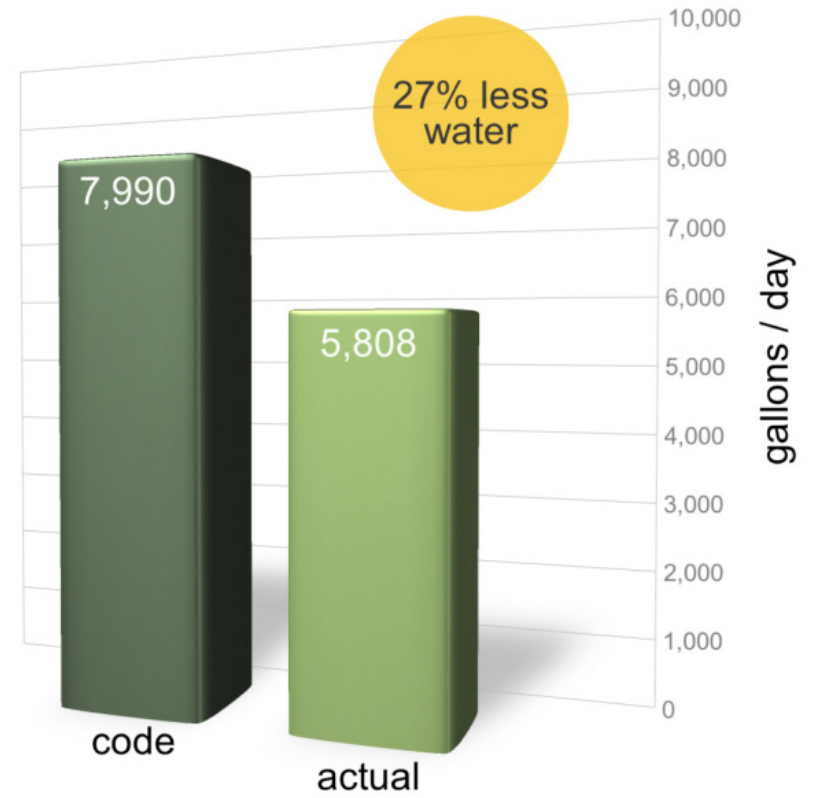
PSU Epler Hall  
Sustainable Section



PSU Epler Hall  
Portland, Oregon



Energy Use



Water Use



PSU Epler Hall  
Portland, Oregon

© Copyright Mithun, Inc. All Rights Reserved

# Olympia Avenue Student Housing

Washington State University



© Copyright Mithun, Inc. All Rights Reserved

Olympia Avenue Student Housing  
Washington State University

Photography by Benjamin Benschneider

**MITHUN**





© Copyright Mithun, Inc. All Rights Reserved

Olympia Avenue Student Housing  
Washington State University

Photography by Benjamin Benschneider





© Copyright 2018, Inc. All Rights Reserved

Olympia Avenue Student Housing  
Washington State University

Photography by Benjamin Benschneider

MITHŪN



© Copyright Mithun, Inc. All Rights Reserved

Olympia Avenue Student Housing  
Washington State University

Photography by Benjamin Benschneider

**MITHUN**



© Copyright Mithun, Inc. All Rights Reserved

Olympia Avenue Student Housing  
Washington State University

Photography by Benjamin Benschneider

**MITHUN**



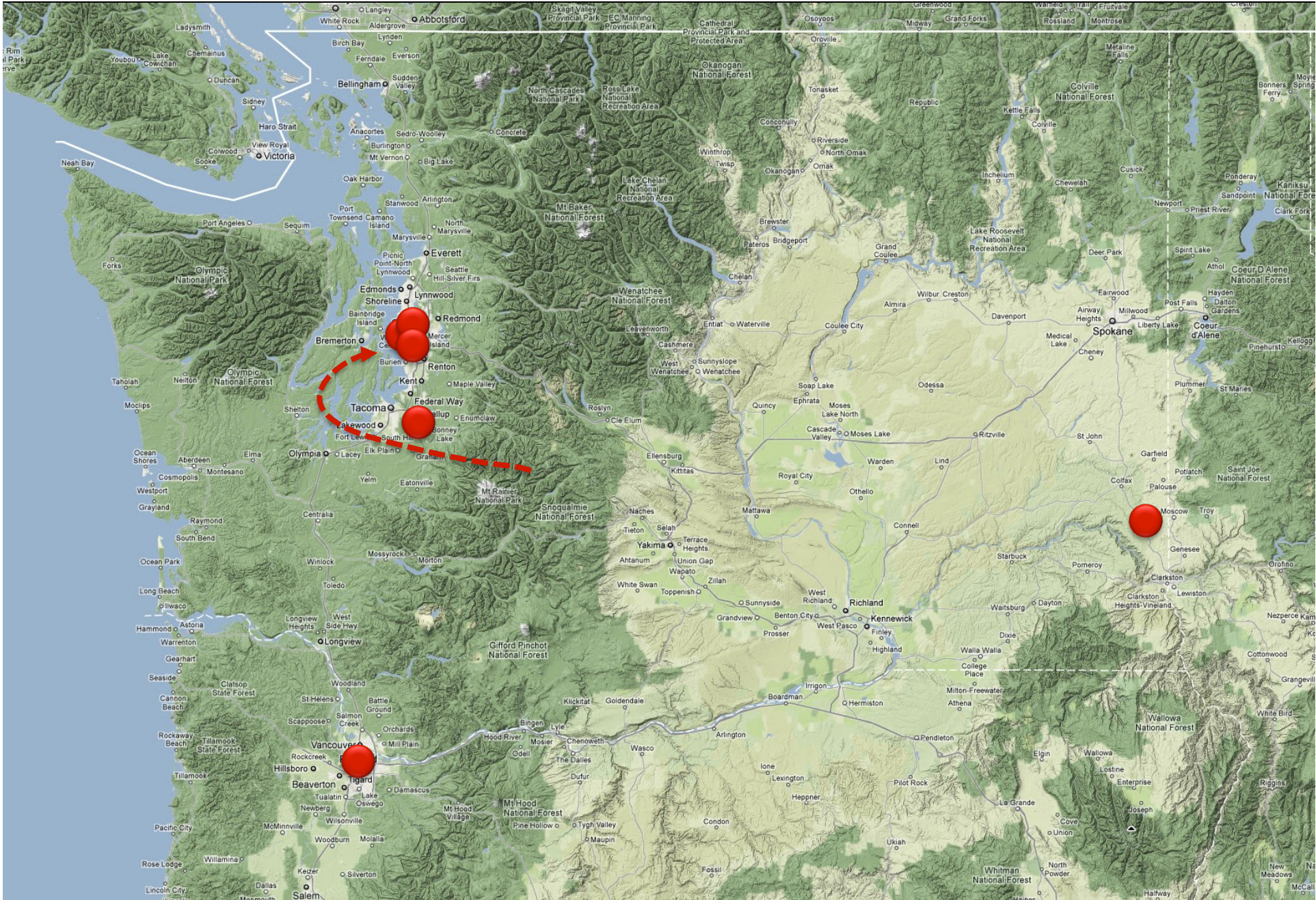
© Copyright Mithun, Inc. All Rights Reserved

Olympia Avenue Student Housing  
Washington State University

Photography by Benjamin Benschneider

**MITHUN**

# Puyallup City Hall





Civic Center Block





Population

Pierce County  
Puyallup

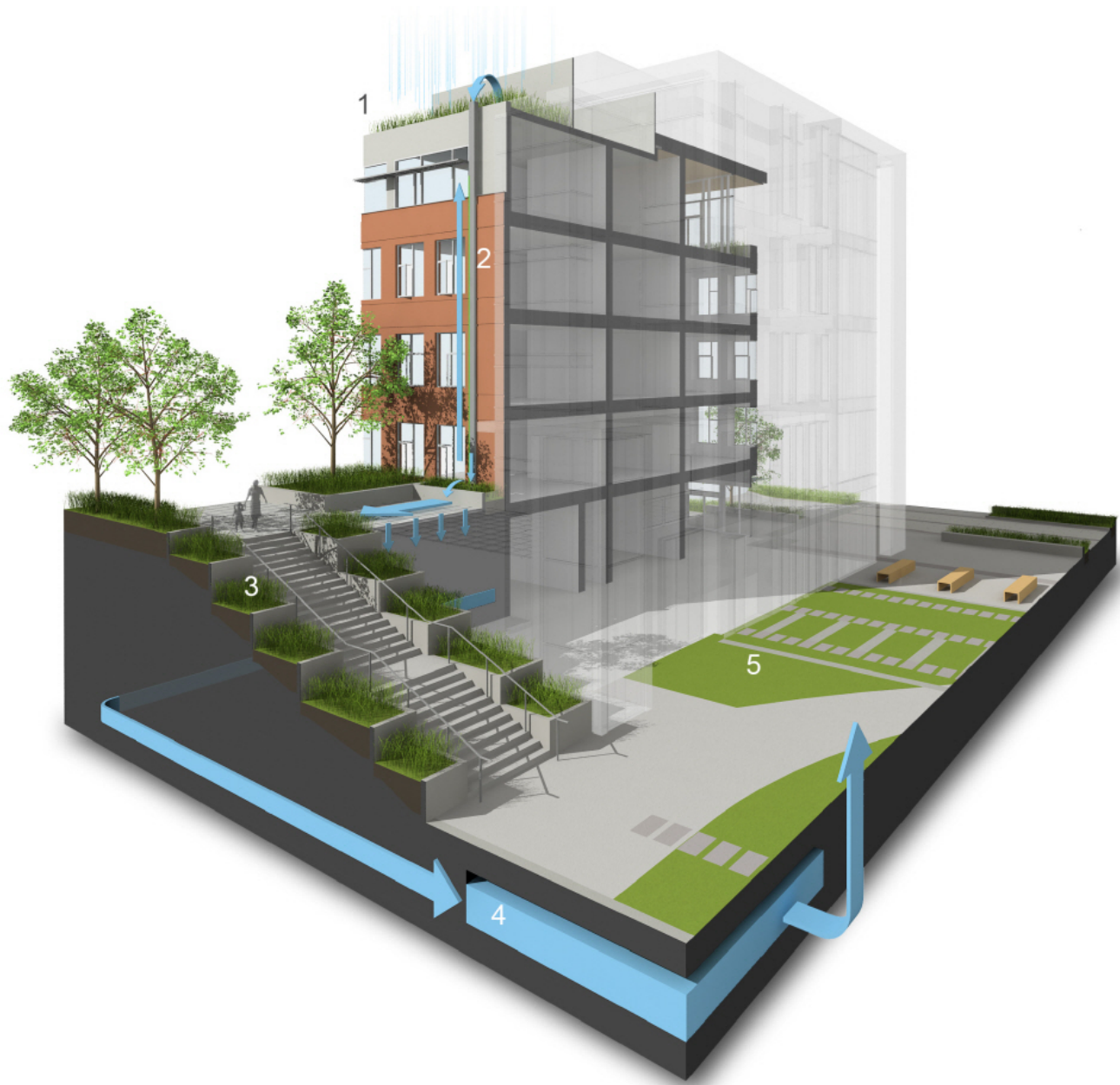
744,000  
35,690

MITHŪN



© Copyright Mithun, Inc. All Rights Reserved

Puyallup City Hall



- 1- Greenroof demonstration
- 2- Vertical cistern art display
- 3- Extension of park through connected open spaces
- 4- Rain water used for irrigation
- 5- Below grade cistern

**Puyallup City Hall**  
Sustainable Section

Puyallup City Hall



© Copyright Mithun, Inc. All Rights Reserved



© Copyright Mithun, Inc. All Rights Reserved

Puyallup City Hall



© Copyright Mithun, Inc. All Rights Reserved

Puyallup City Hall



© Copyright Mithun, Inc. All Rights Reserved

Puyallup City Hall



© Copyright Mithun, Inc. All Rights Reserved

Puyallup City Hall



# REI Seattle



© Copyright Mithun, Inc. All Rights Reserved

REI Flagship Store  
Seattle, WA

MITHUN



© Copyright Mithun, Inc. All Rights Reserved

REI Flagship Store  
Seattle, WA

MITHUN

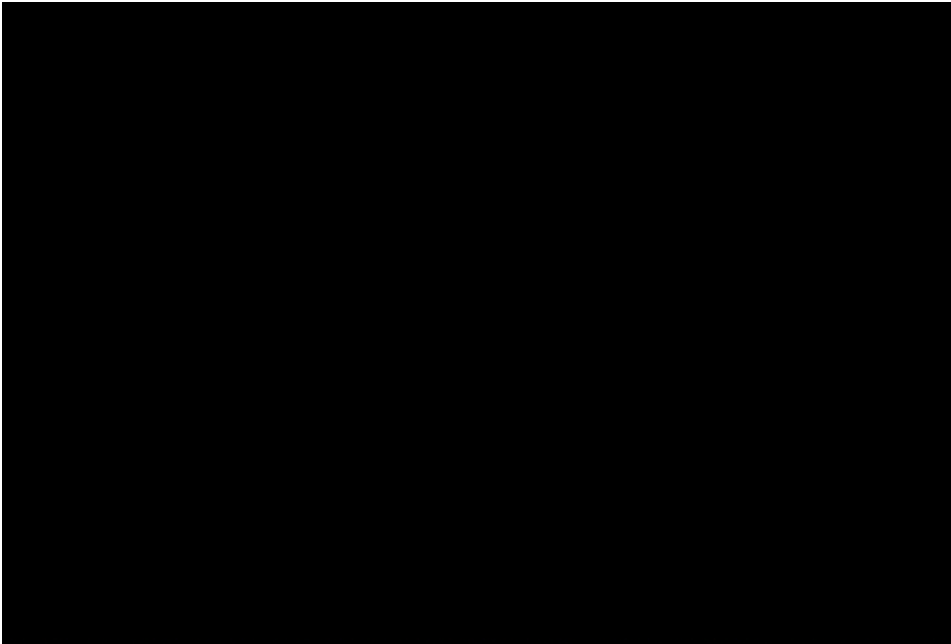


REI Flagship Store  
Seattle, WA



© Copyright Mithun, Inc. All Rights Reserved

REI Flagship Store  
Seattle, WA



© Copyright Mithun, Inc. All Rights Reserved.

REI Flagship Store  
Seattle, WA

MITHUN



© Stephen Johnson, Inc. All Rights Reserved

REI Flagship Store  
Seattle, WA

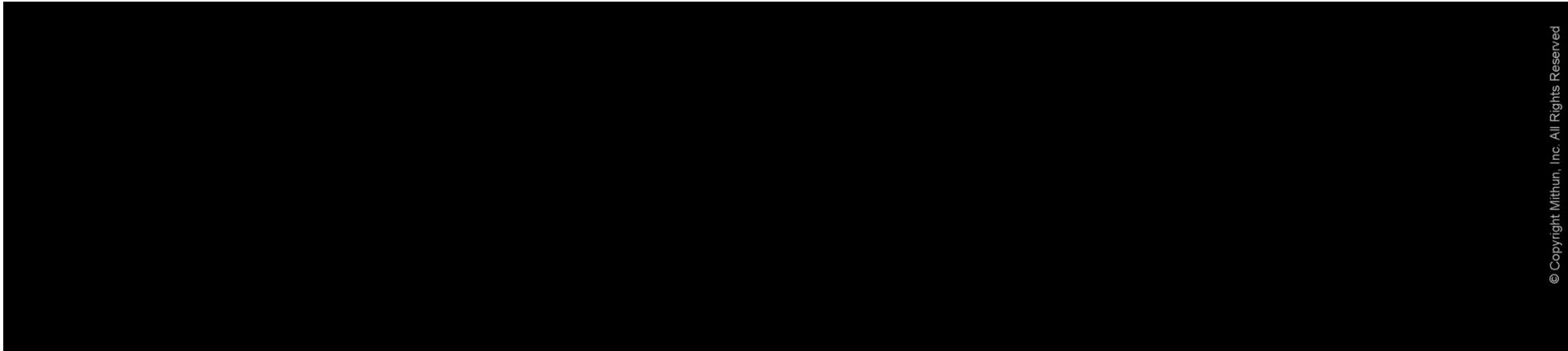
MITHŪN



REI Flagship Store  
Seattle, WA

MITHŪN





Taylor 28

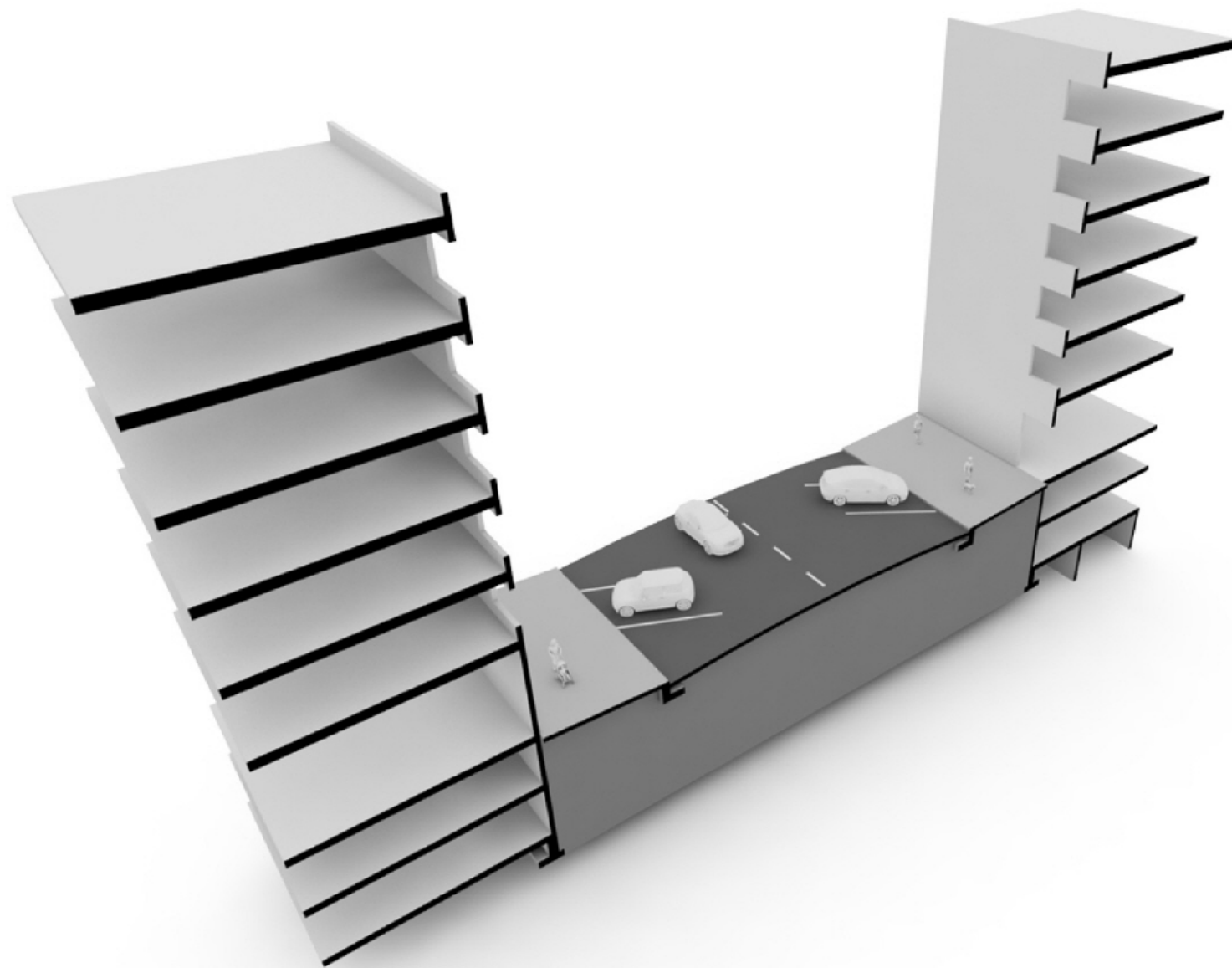


© Copyright Mithun, Inc. All Rights Reserved

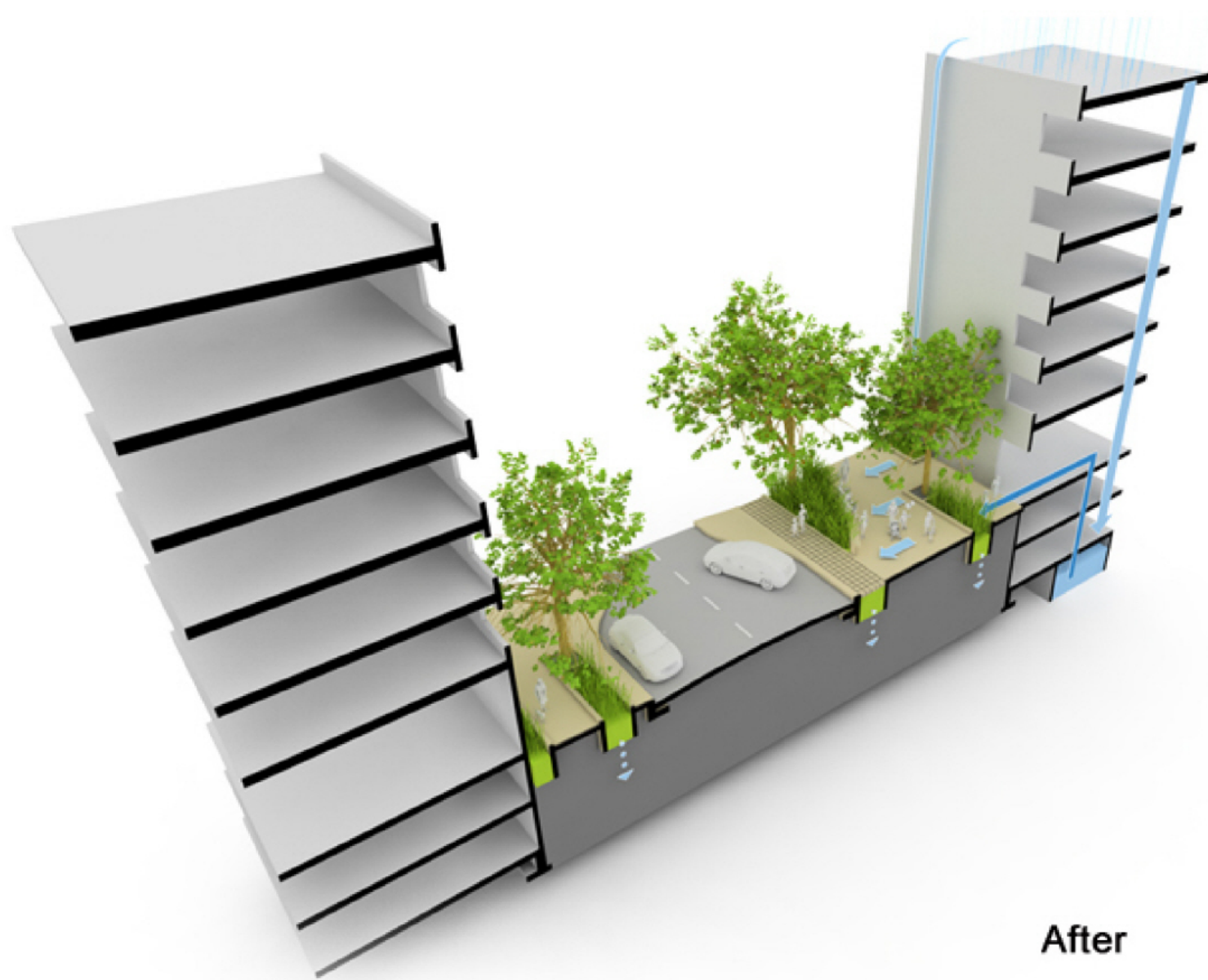


Taylor 28  
Vicinity Map - Street Level

MITHUN



Taylor 28  
Street Section - Before



© Copyright Mithun, Inc. All Rights Reserved

After

Taylor 28  
Street Section - After

MITHUN



Taylor 28  
Seattle, WA



© Copyright Mithun, Inc. All Rights Reserved.

Taylor 28  
Seattle, WA

MITHUN

# Unico / Inhabit

Modular Homes

MITHŪN





© Copyright Mithun, Inc. All Rights Reserved.

Inhabit Prototype  
Seattle, Washington



© Copyright Mithun, Inc. All Rights Reserved

Inhabit Dexter  
Seattle, Washington

MITHUN



© Copyright Mithun, Inc. All Rights Reserved

Inhabit Prototype  
Seattle, Washington



**MITHUN**