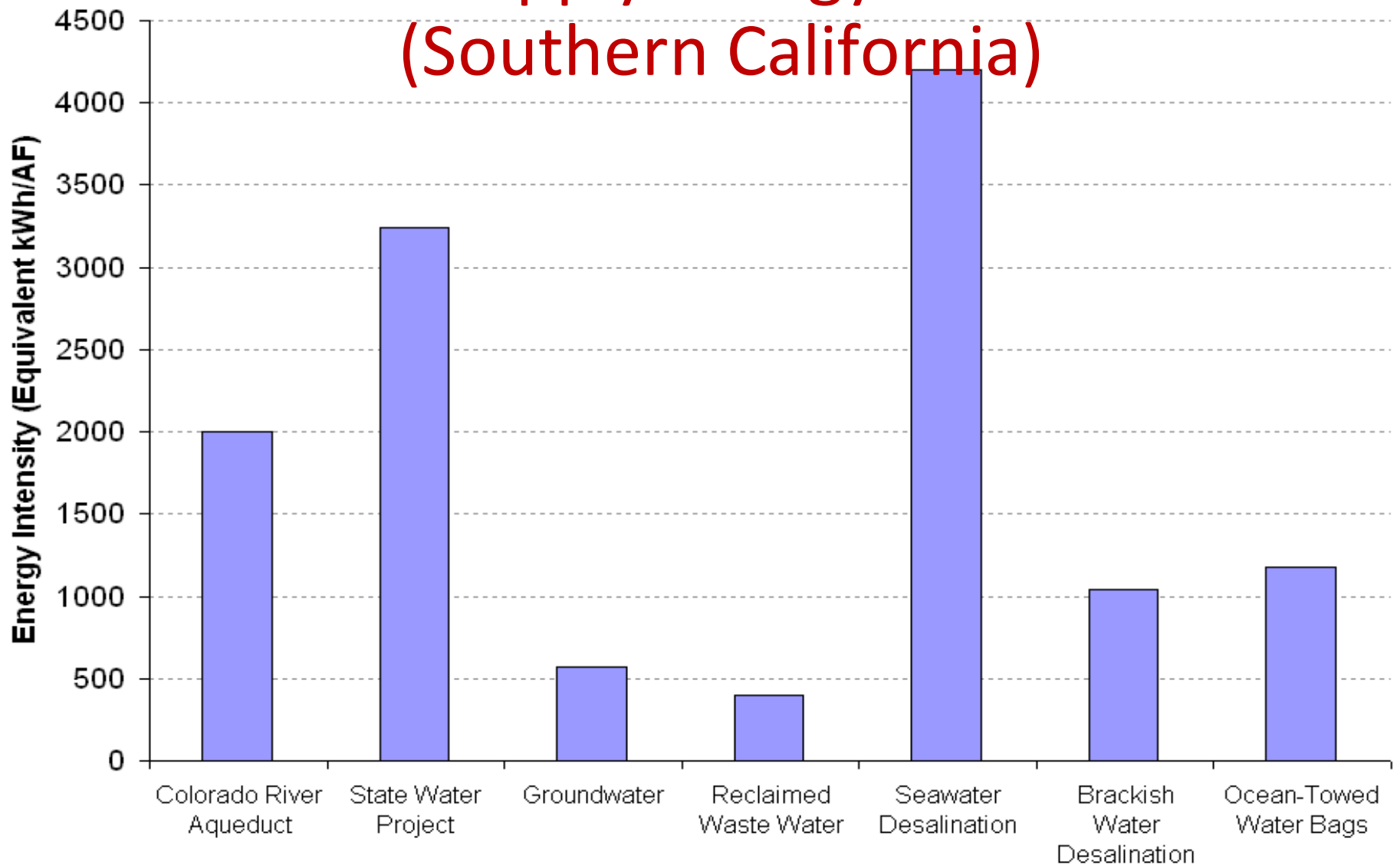


# Energy/Water Summary

- Water and energy are tightly linked, but these links are poorly understood and rarely used in policy.
  - Decision makers and corporations should better integrate energy issues into water policy *AND* water issues into energy policy.
- Failure to link these issues will *inevitably* lead to disruptions in the supply of both water and power.

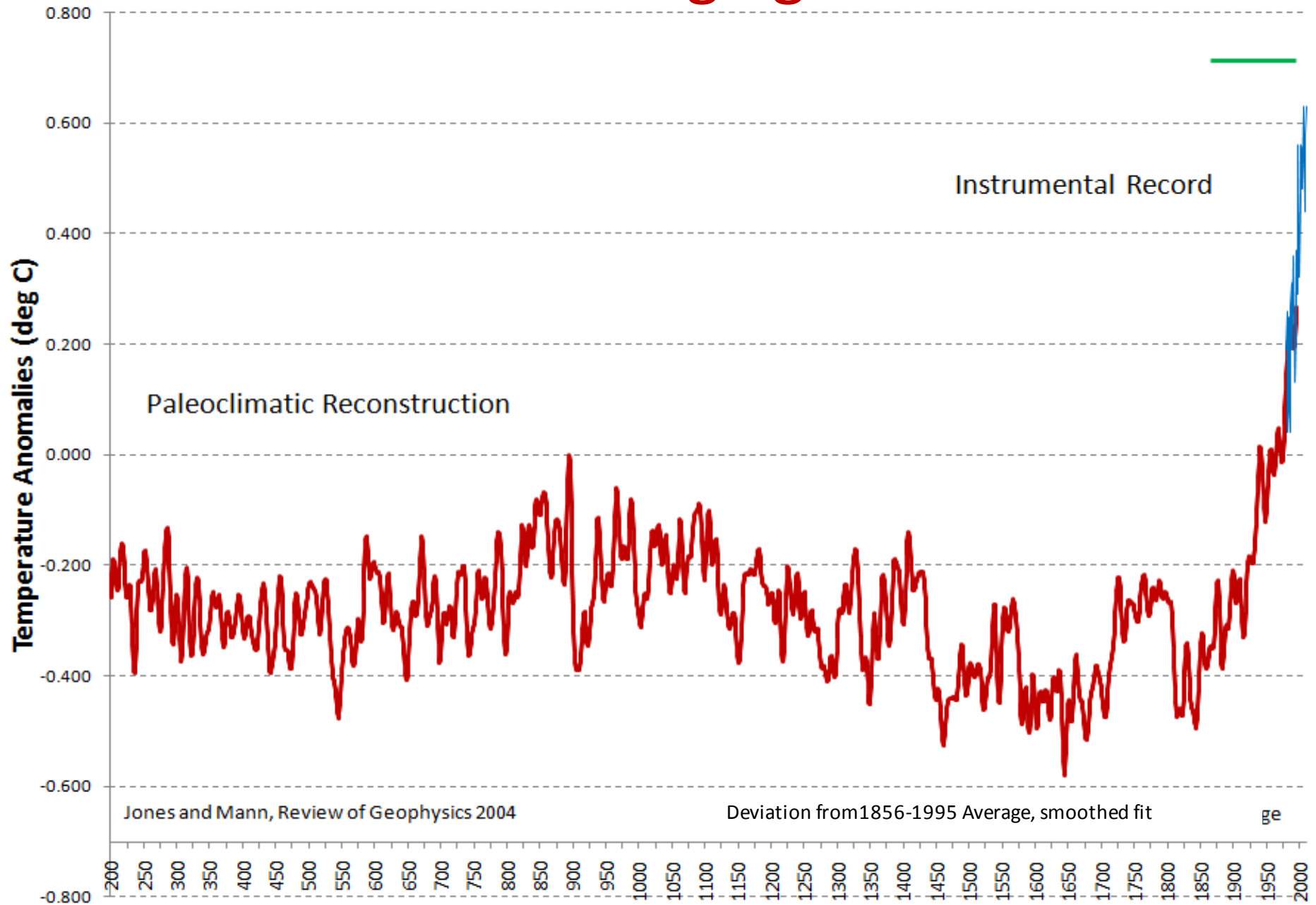
# Water Supply Energy Intensities (Southern California)



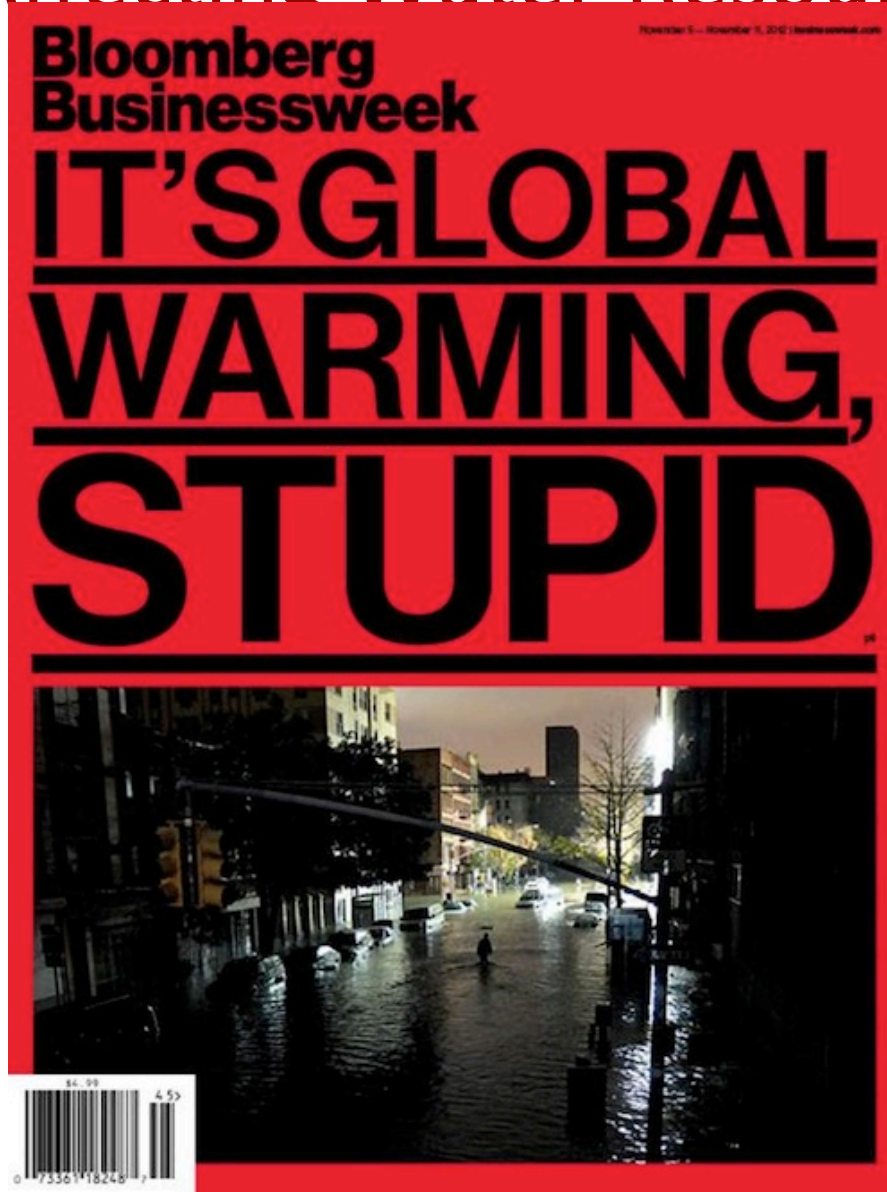
# Energy/Water Summary

- Water efficiency efforts can save substantial water (and energy) at lower cost, and faster, than new “supply.”
  - Water efficiency should be given a higher priority by resource planners.
- The climate implications of both water and energy policy are significant.
  - There are large opportunities for fast, cost-effective reductions in emissions.

# Humans Are Changing the Climate



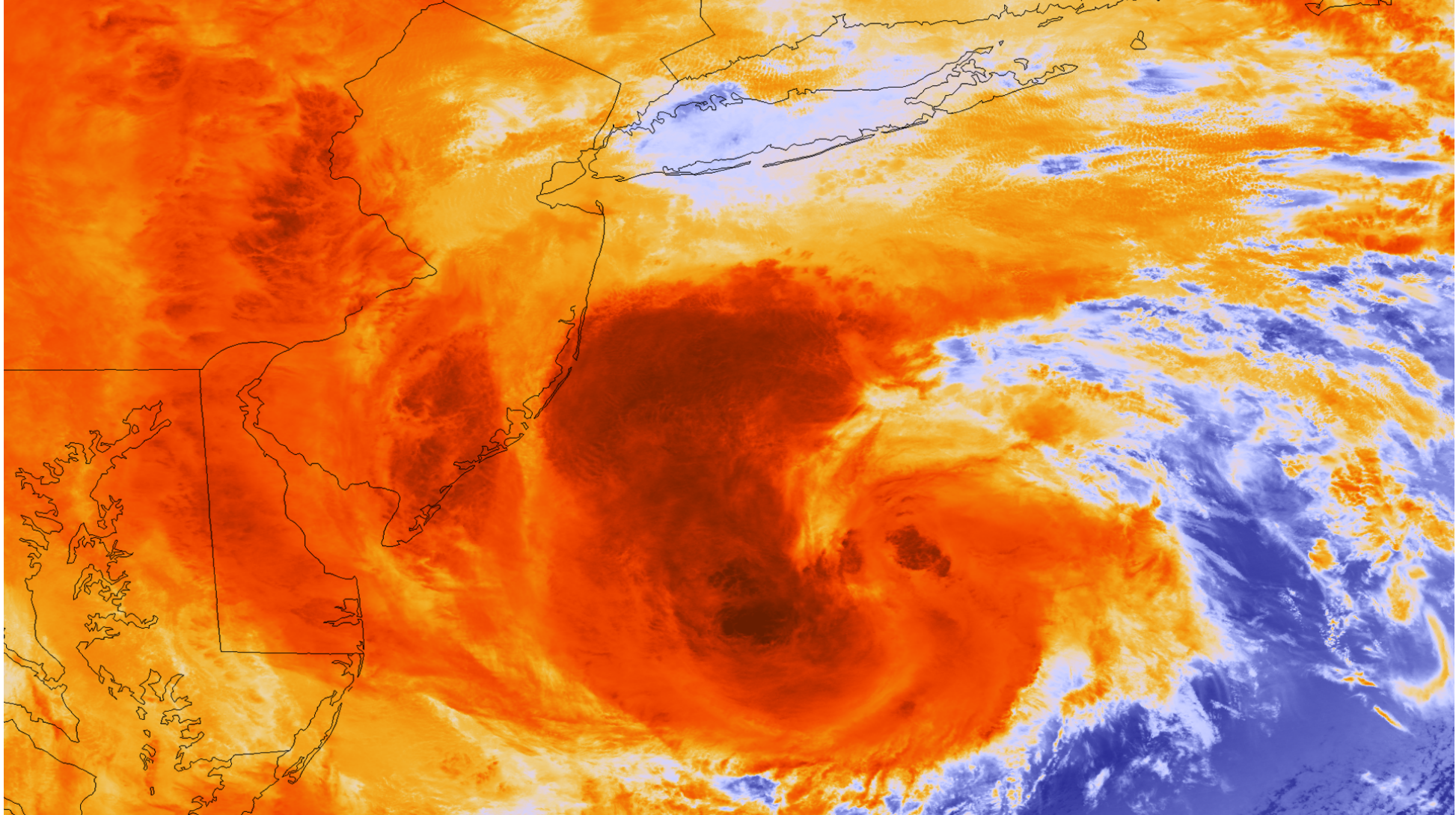
# Climate Changes Are Already Affecting Water Resources



BusinessWeek 2012



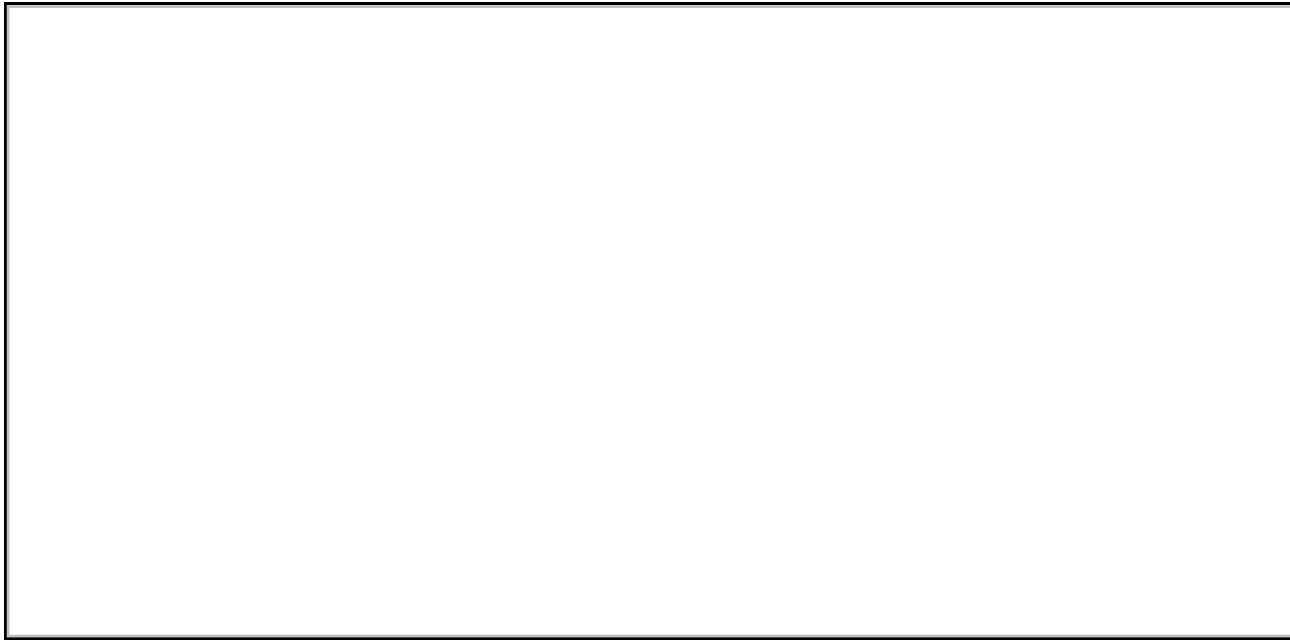
# Extreme Events are Increasingly Influenced by Climate Change



NOAA/NASA 2012. Suomi NPP satellite photo of Hurricane Sandy, 1:35 pm ET on October 29, 2012

## Munich Re

- “The only plausible explanation for the rise in weather-related catastrophes is climate change.”



[https://www.munichre.com/app\\_pages/touch/naturalhazards/@res/pdf/downloads/severe-weather-in-north-america-executive-summary-en.pdf](https://www.munichre.com/app_pages/touch/naturalhazards/@res/pdf/downloads/severe-weather-in-north-america-executive-summary-en.pdf)

[http://www.munichre.com/en/media\\_relations/press\\_releases/2010/2010\\_09\\_27\\_press\\_release.aspx](http://www.munichre.com/en/media_relations/press_releases/2010/2010_09_27_press_release.aspx)