

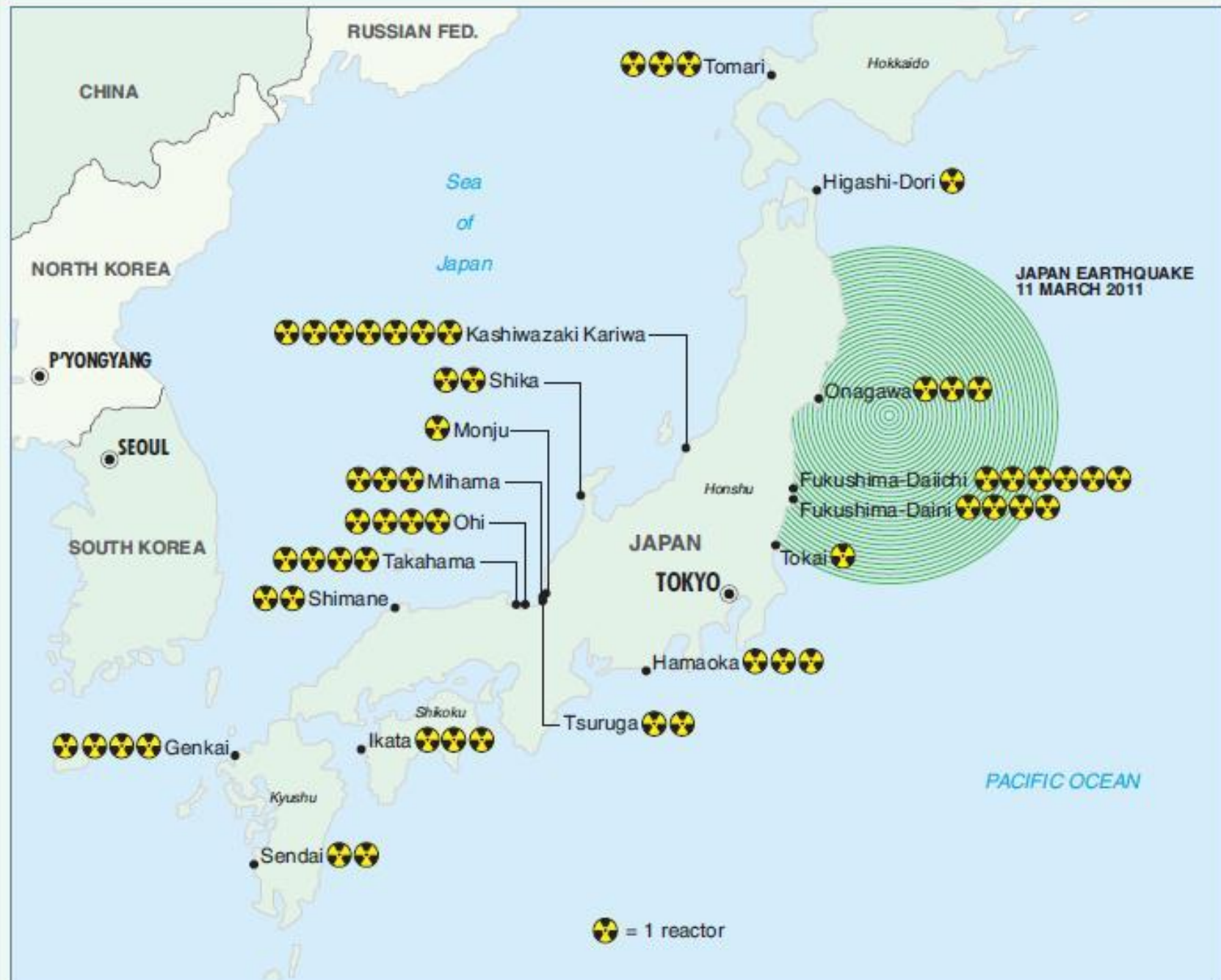
Radiation and Recovery in Tohoku

SPUR Presentation

Craig Van Dyke, M.D.
University of California, San Francisco
November 10, 2011

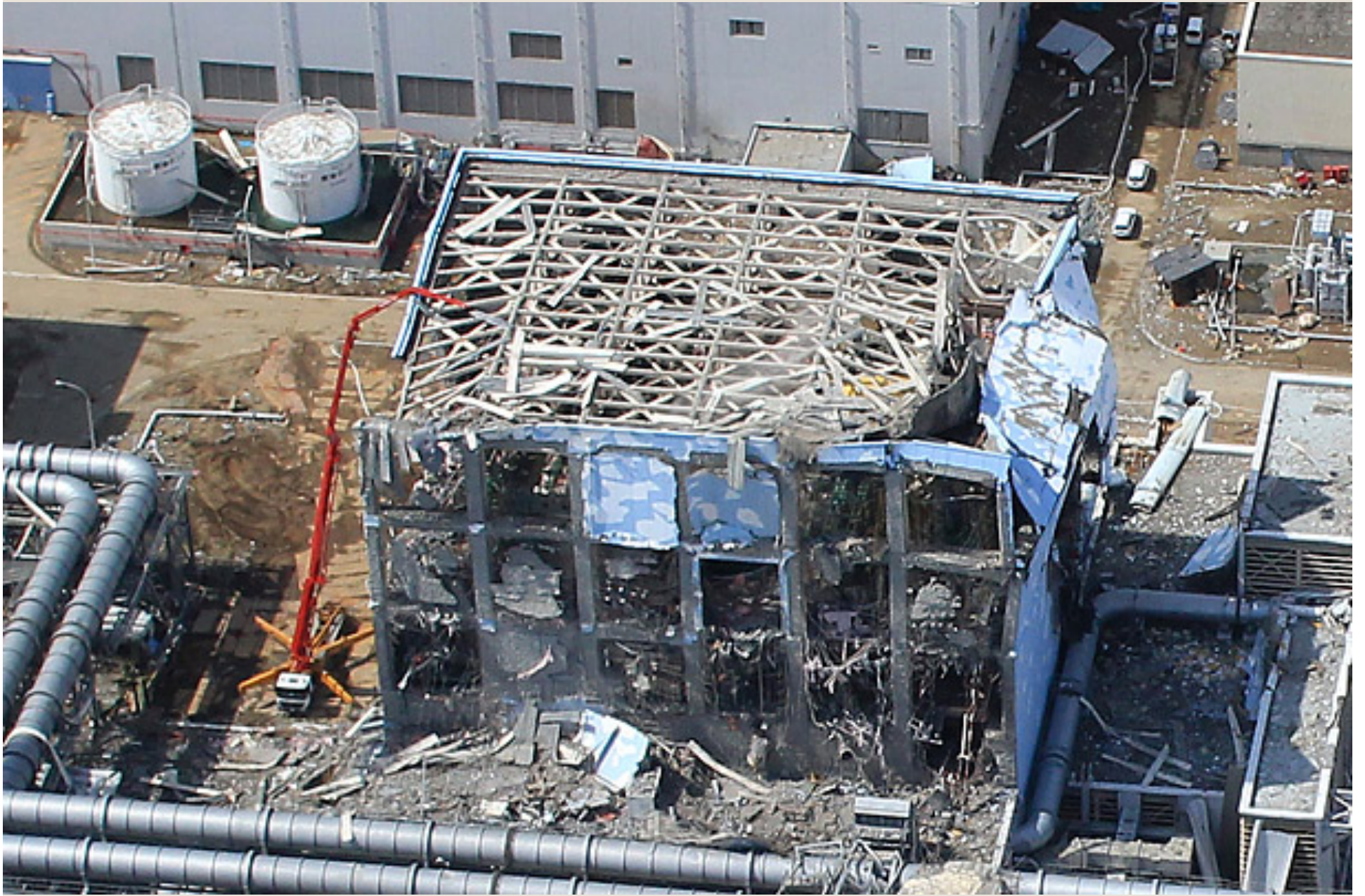


JAPANESE NUCLEAR POWER FACILITIES:









Post Meltdown Issues

1. Government minimized severity
2. Who is in charge?
3. Delayed evacuation
4. Evacuated into contaminated areas
5. Potassium iodide not distributed
6. Food safety
7. Mapping of radiation
8. Clean up plan





0	木	25	土
9	木	26	日
10	金	27	月
11	土	28	火
12	日	29	水
13	月	30	木
14	火		
15	水		
16	木		



魚菜草

福島市上島渡字山E65-7
TEL.(024)593-3293











Radiation Concerns

- Unimaginable power – weapons of mass destruction
- Foreign, unnatural, confusing
- Invisible, undetectable – uncertainty about safety
- Contaminated if exposed:
 - Ticking time bomb
 - Self-concept as damaged goods
 - Stigmatization – Hibakusha (explosion affected people)

Reaction to Tohoku Residents

- Reluctance to re-supply
- Cars vandalized
- Refusal to rent hotel rooms
- Relocated children bullied
- Hiroshima and Nagasaki citizens' supportive response

Understanding Stigma

1. Blaming the victim
2. Zero-sum perspective
3. High social capital
4. “Tight” versus “loose” societies

Fight!
Fukushima!



がんばろう
ふくしま!