

## India Basin Neighborhood Association Presents: The Community Vision





## **Community Goals**

- **Comprehensive Planning**
- **Environmental Protections**
- **Economic Success**
- **Transportation Improvements**
- **Recreational Opportunities**



# Establishing Zoning, Heights, and Transportation for the Future Bayview Hunters Point Planning Areas

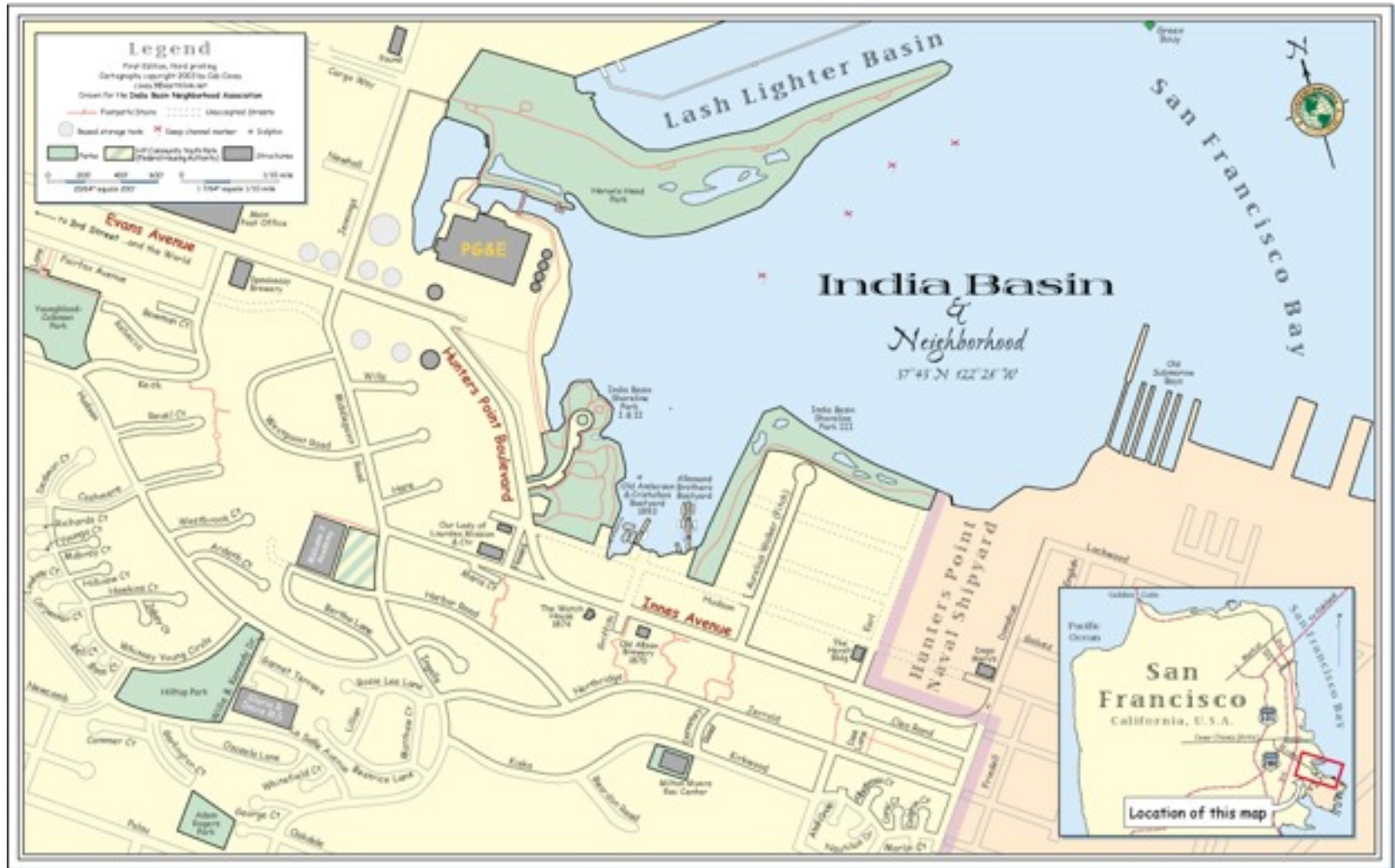


## Why Area C?

**Area “C” was carved out of the larger Bayview Project Area “B” for special planning**



# India Basin is More than Area C



Map by Cab Covay

**Area C Includes SF Landmark #250 Hunters Point  
Shipwright's Cottage**

## **Sunny Neighborhood Lacking**



### **How Far is It?**

**From 900 Innes:**

- Meeting Space = 1.9 miles
- Recreation Center = 1.3 miles
- Cup of Coffee = 1.3 miles
- Fresh Produce = 2.4 miles
- Supermarket = 3.8 miles
- Waterfront Restaurant = 2.5 miles

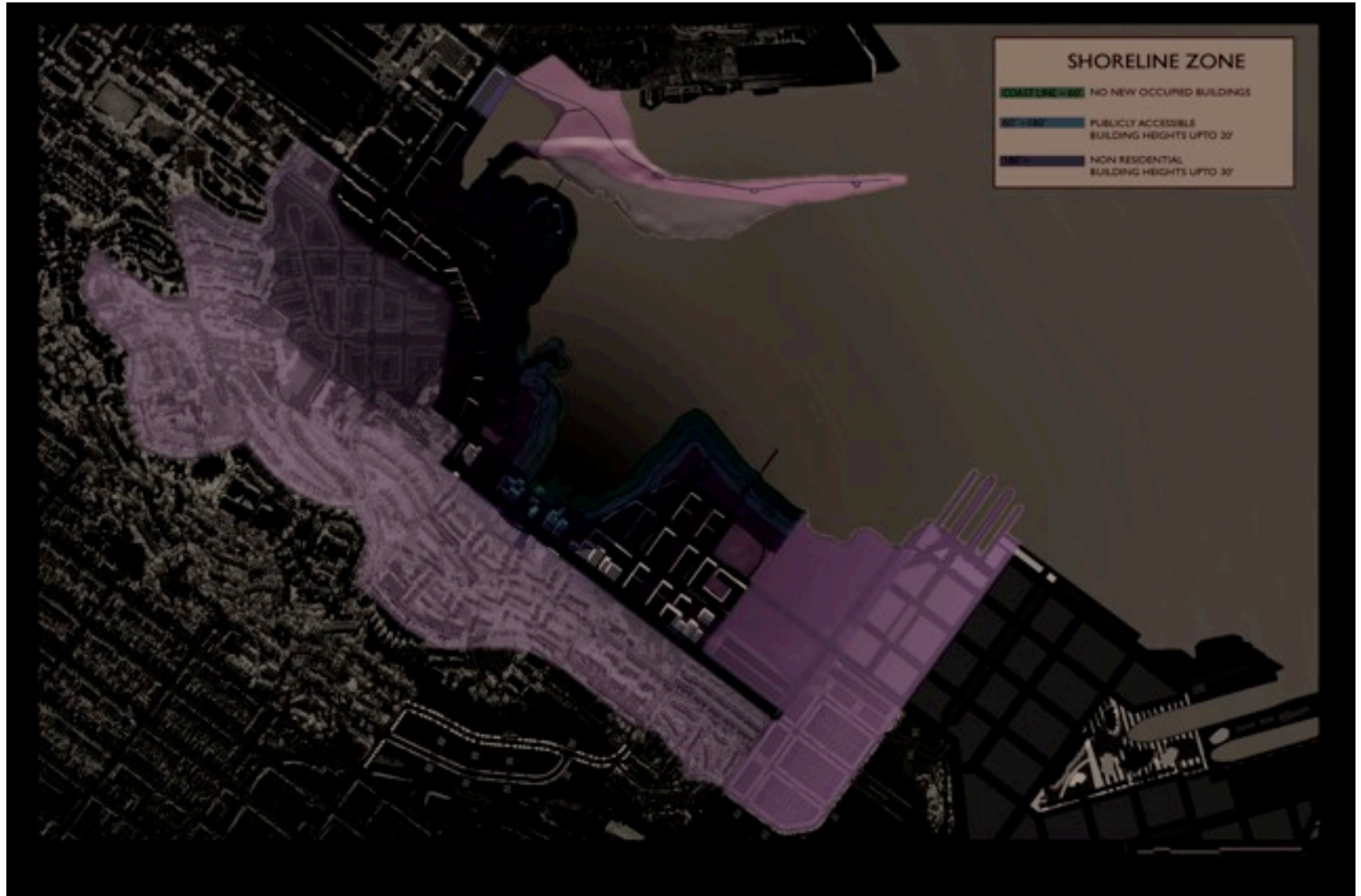


# India Basin is Surrounded by Development

## 300% Growth at Full Build Out

	Today	2015	Full Buildout
<b>Hunters View</b>	267	800	800
<b>Shipyard Phase I</b> <i>100% entitled</i>	0	800 in India Basin	800 in India Basin
<b>Shipyard Phase II</b> <i>under review</i>	0	0	400 in India Basin
<b>Hunters Point Hill</b> <i>temporarily deferred</i>	400	400	1000
<b>Infill / Existing</b>	100	200	300-450
<b>TOTAL UNITS</b>	767	2200	3,300-3,450
Total Population = 5,000 today, more than 15,000 tomorrow Number of Children = 2,500 total Number of Dogs = 2,250 total			

# Redevelopment and Planning are Changing ZONING and HEIGHTS Community Values Protect Shoreline





# Shipyards Development Impacts Transportation Livability Includes Adding Transit Options



## Power Plant Site Today: Approximately 30 Acres owned by PG&E





# Power Plant Site Revitalized Cooling Lagoon Becomes





## Power Plant Site Today

# Jennings Street Truck Route with a



# Power Plant Site Revitalized Entertainment & Dining Destination





## The Power Plant Site Today

# Main Plant Area Undergoing





The Power Plant Site Revitalized  
**Vibrant Uses Bring People to**



**Riverfest  
Amphitheater**

**Little Rock  
Approximately  
1,375 fixed seats**

**Power Plant Site Today**

# Tank Lots Undergoing Cleanup



Tank Lots Revitalized

# Family Homes Linked to Hunters





# The Power Plant Site Revitalized Attractions for Livable



## The Power Plant Site Revitalized

# Attractions that Will Draw Visitors



### Ideas for Uses

- **New Class 1 Bike / Ped Path**
- **Waterfront Entertainment Venue**
- **Cooling Lagoon Nature Area**
- **Jennings Street Restaurant Row**
- **Family Homes**
- **Safe Connections to Hills**
- **Underground Utility Lines**
- **Car Share Lot**
- **Dog Run**

# Historic Boatyard Today: 7 Waterfront Lots Construction Equipment Storage





# The Historic Boatyard Revitalized India Basin Boating Center



**Seattle  
Center  
for  
Wooden  
Boats**

**Providing  
Recreation  
and  
Education on  
Lake Union  
for the last  
25 years**

# The Historic Boatyard Revitalized India Basin Boating Center

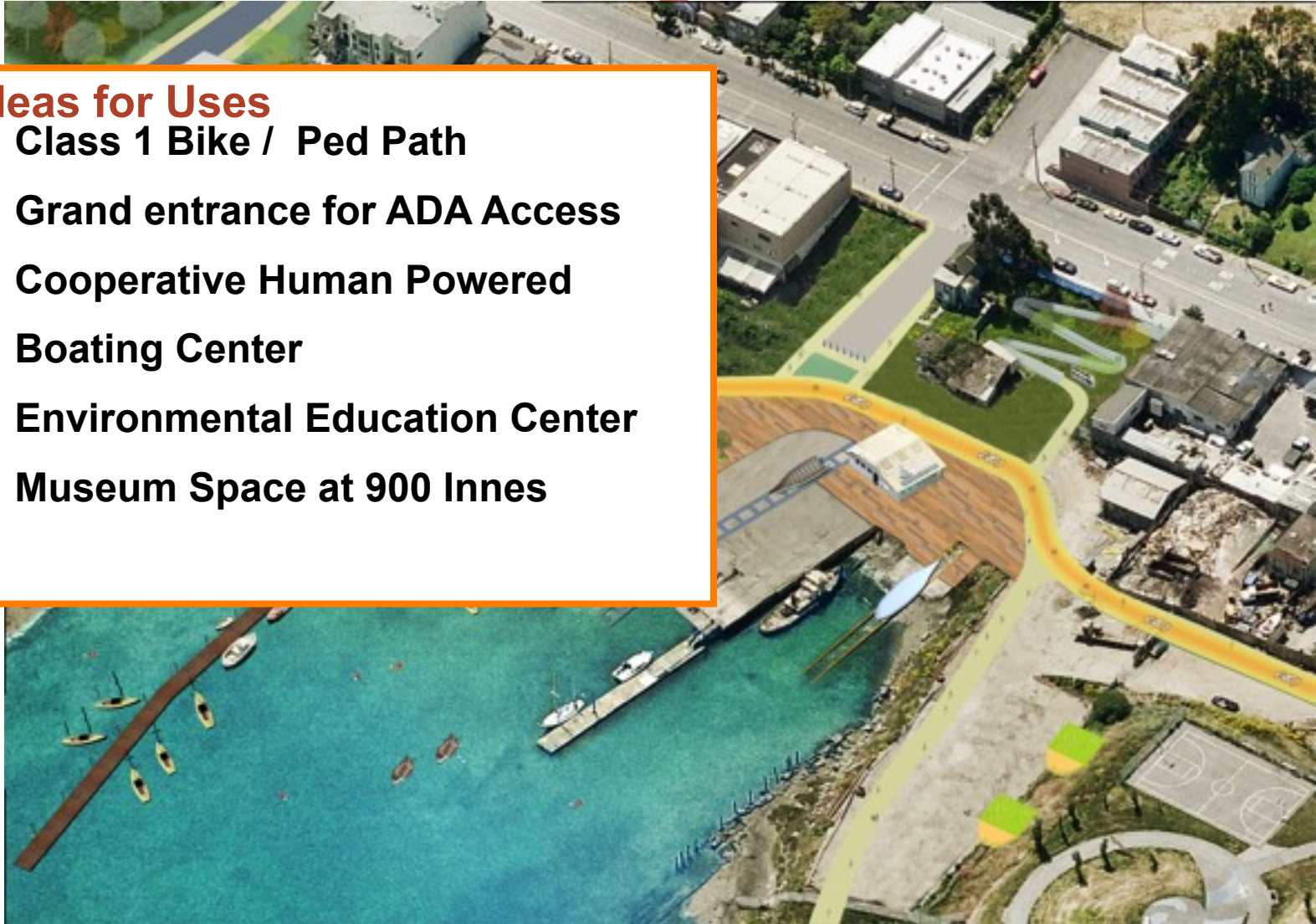




# The Historic Boatyard Revitalized India Basin Boating Center

## Ideas for Uses

- **Class 1 Bike / Ped Path**
- **Grand entrance for ADA Access**
- **Cooperative Human Powered Boating Center**
- **Environmental Education Center**
- **Museum Space at 900 Innes**





**The Flats Today:** *Approximately 15 waterfront acres*  
**Isolated Open Space (with a view!)**



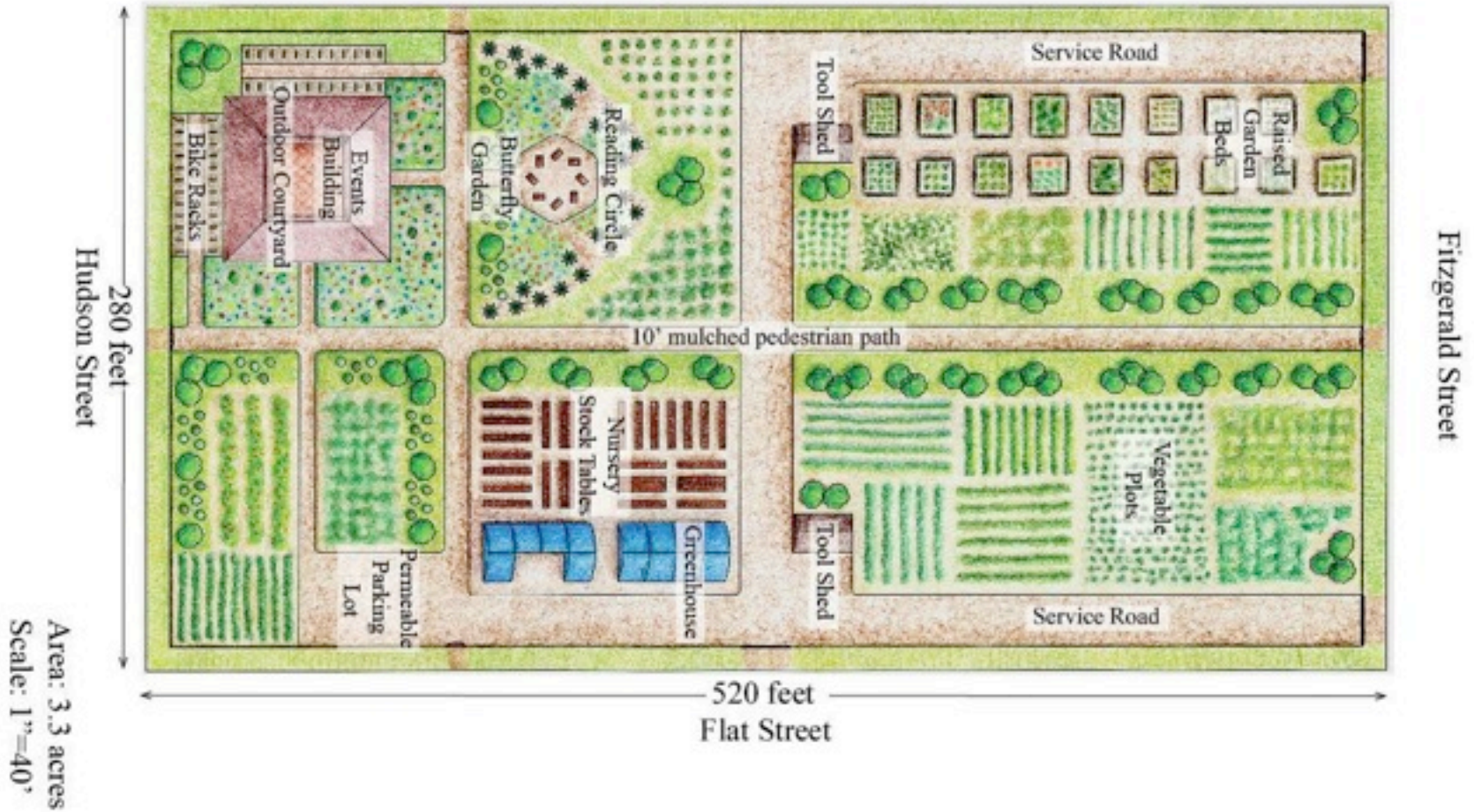
# The Flats Revitalized A Village Marketplace





# The Flats Revitalized Community Farm

Arelious Walker





The Flats Revitalized

# Beach Access and Water Transit



# The Flats Revitalized

## Signature Waterfront Active Space





# The Flats Revitalized

## A Village for the 21<sup>st</sup> Century



### Ideas for Uses

- **Class 1 Bike / Ped Path**
- **Water Taxi Dock**
- **Community Farm**
- **Entrepreneurial Marketplace**
- **Homes and Offices**
- **Extreme Sports Zone**
- **Dog Agility Course**
- **Beach Access**
- **Connected Waterfront Access**
- **New streets for Flow to Shipyard**



# The Community Vision Created by the India Basin Neighborhood Association



**The Community Vision document was made possible  
with funding from Lennar Urban.  
Community members donated their time and creativity.**

## **Shoreline Planning Committee**

- Kristine Enea, *resident since 2005*
- Jill Fox, *resident since 1992*
- Michael Hamman, *resident since 1997*
- Alex Lantsberg, *resident since 1999*

## **Additional Contributors**

- Ralph Belton, AIA, *Architect*
- Ron Blatman, *Financial Analyst*
- Timothy Cho, *Architectural Artist*
- Jill Fox & Alex Shonkoff, *Photography*
- Cab Covay, *India Basin Map*
- Melita Rhines, *Administration*

**Help Shape the Future of San Francisco**

**Visit [www.indiabasin.org](http://www.indiabasin.org) or**

**1-800-INDIA-BASIN**



**Take a Walking Tour:**

**Saturday, June 19**

**10:00 am – Noon**

**2 Hours - 3 Mile Loop**

**FREE**

**Meet at the Entrance to  
Heron's Head Park  
at Cargo & Jennings**

**Invite your Friends!**