

Church and Duboce Track Improvement Project





SFMTA Project Manager: Ming Gu

SFMTA Project Engineer: Mark Rudnicki

Duboce Triangle Neighborhood Association (DTNA): Kit Hodge,
Peter Cohen, Cheryl Brinkman

Castro/Upper Market Community Benefit District (CBD): Andrea Aiello/ED

Landscape Architects Consultant: RHAA

City Planning: David Alumbaugh, Nick Perry

DPW/Landscape: Kris Opbroek, John Dennis, Irma Jarvenpaa,
Chris Mateo

DPW/Street Paving: Roman Kong, Patrick Rivera, Lawrence Henriquez

SFMTA Sustainable Streets: Javad Mirabdol, Bridget Smith

SF Arts Commission: Jennifer Lovvorn

BSM: Grace Moore, John Kwong

SFMTA M&O: Julie Kirschbaum, Frank Alejandro, Tom Kennedy, John
Katz

SFMTA Safety: Bryant Woo

SFMTA Accessibility: Annette Williams, Virginia Rathke

SFMTA Real Estate: Gail Stein

SFMTA Bike Program: Damon Curtis

SFMTA Community Outreach: Jay Lu

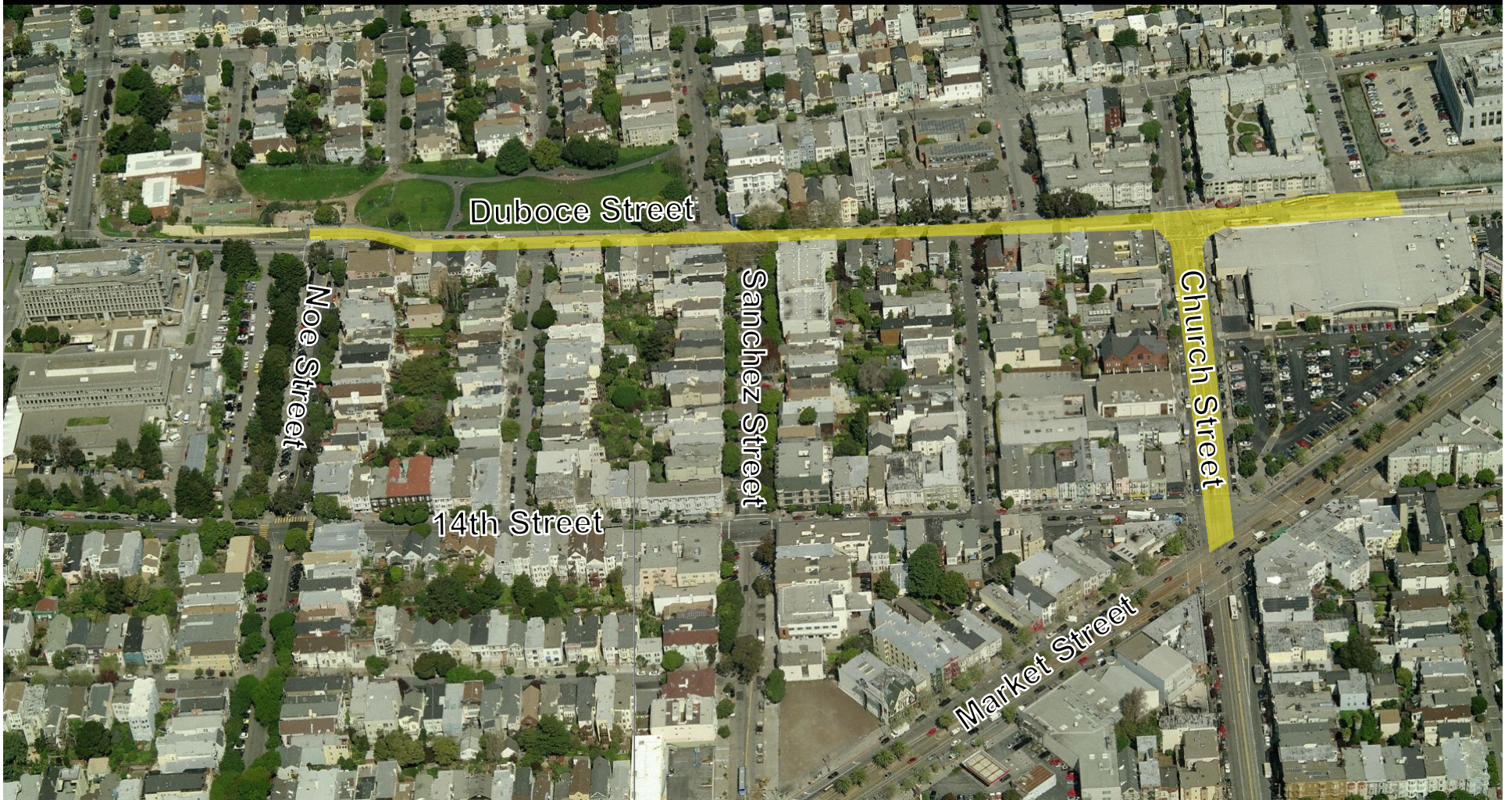
SFMTA Job Order Contracting: John Brandenburg

PUC/Water: Thinh Nguyen

PUC/BLHP/Street Lighting: Sue Black, Roman Muros

PUC/Sewer: Bhula Patel

Duboce & Church Trackwork Improvement Project Limits



SFMTA Project Goals & Objectives

- The primary goal of this project is to maintain safe operation of Muni's light rail system.
- The main objectives are to replace worn tracks, OCS system, switch control system and other associated facilities.



Trackwork

Existing



Proposed



OCS Work



Existing
Concrete Pole



New Pole

Burying Overhead Wires

Before



After



Other Department Works

- DPW Street Paving and Curb ramp Upgrade
- PUC Water Improvement
- PUC Sewer Improvement
- PUC Streetlight Improvement

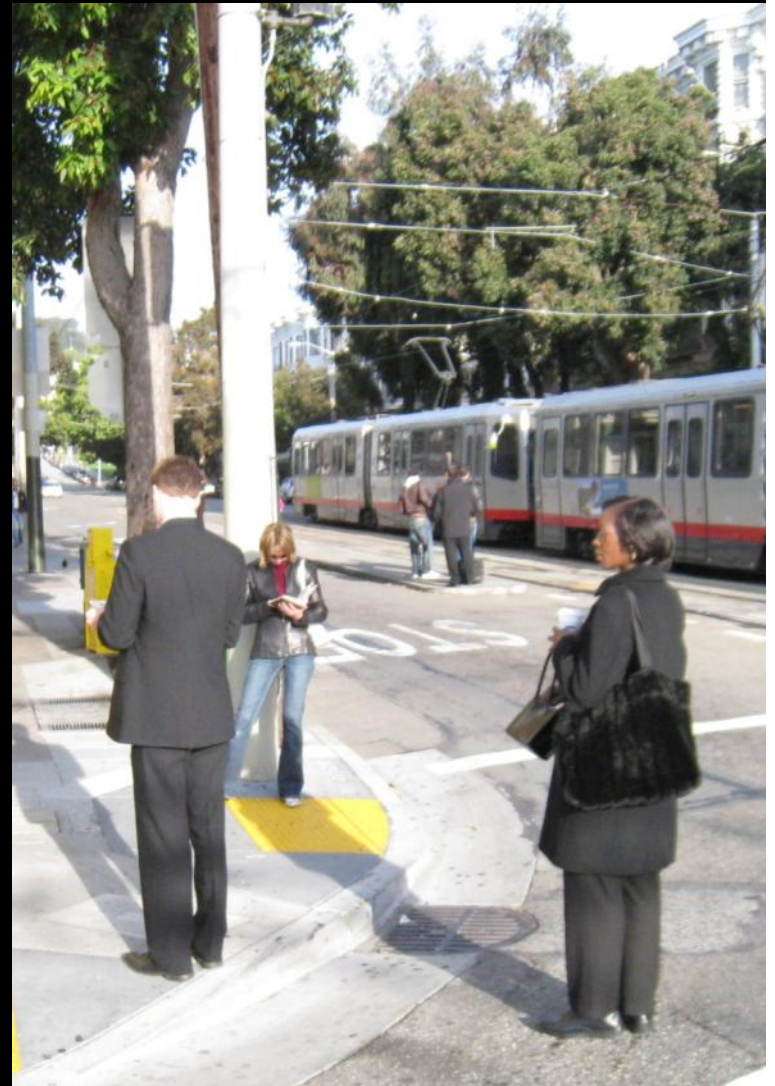


DTNA Involvement



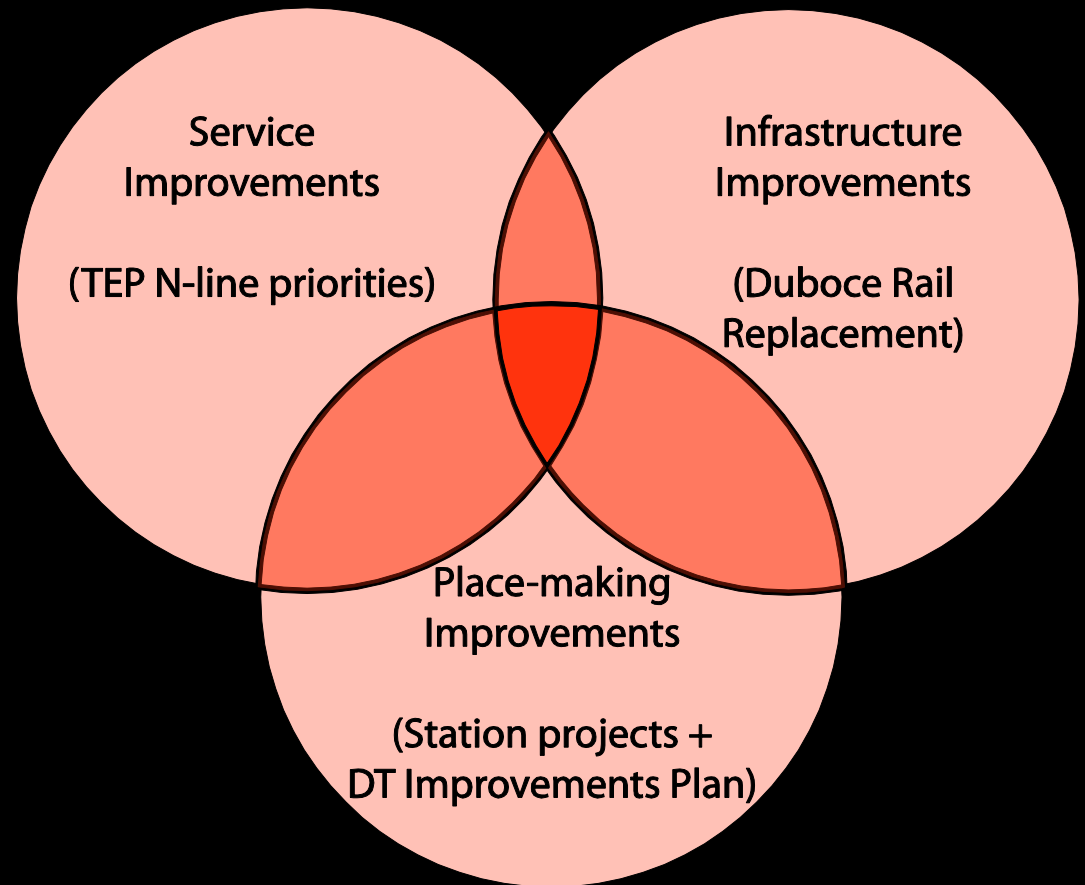
The Opportunity

Once-in-a-generation chance to rebuild a major neighborhood transfer corridor into a “people-first” transit hub that improves service and strengthens ridership.



Teamwork

Service Improvements
+
Infrastructure Improvements
+
Place-making Improvements
=
A Triple-Win



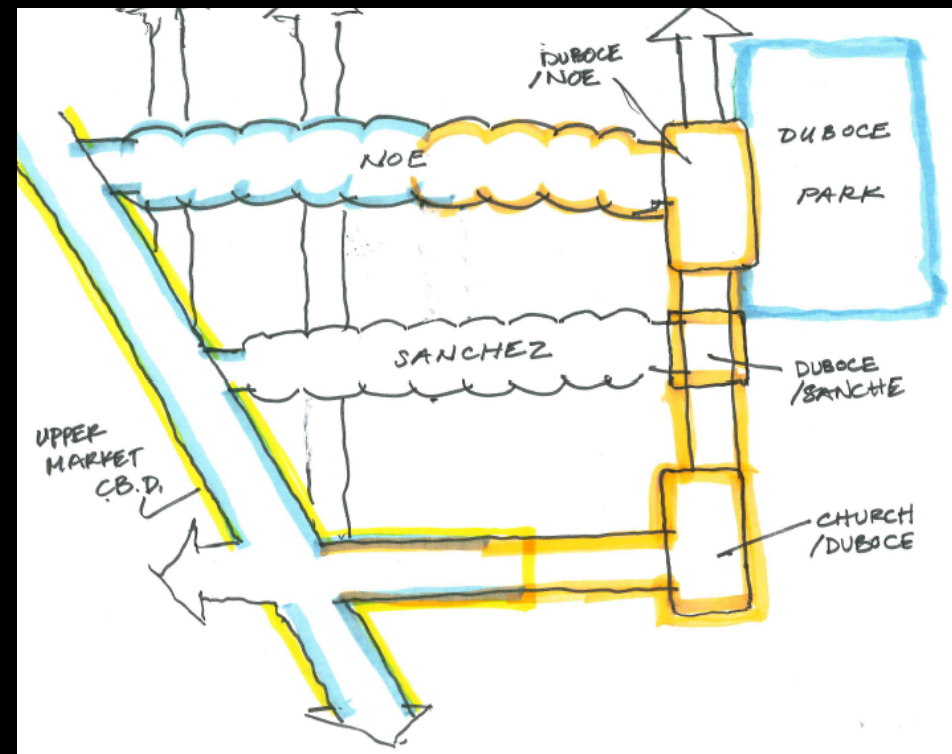
Community Perspective

- Community Design Objectives
- Project scope expanded by community – in line with Better Streets Plan
- Constant conversation about details that arose
- Commitment and continuity



Community Design Objectives

- Ped / Bike / Transit Rider Experience
- Streetscape Enhancements – Neighborhood Character
- Traffic Calming / Safety



Plan Area 1: Duboce & Noe



Plan Area 2: Duboce / Sanchez / Steiner

PRECEDENT IMAGES



A



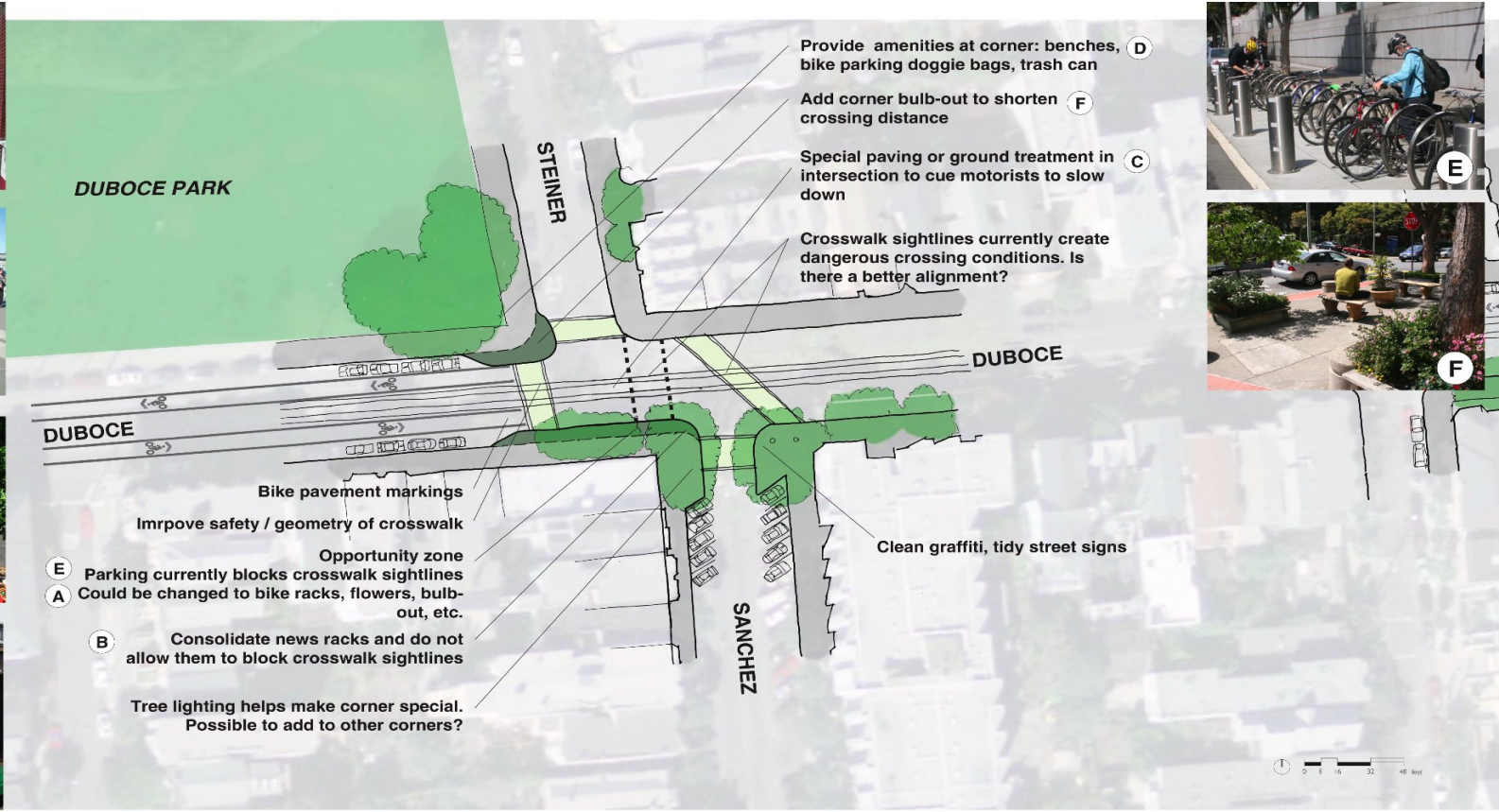
B



C



D



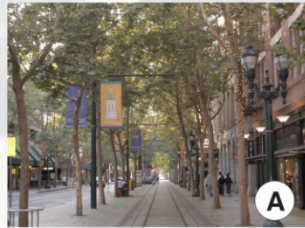
E



F

Plan Area 3: Church & Duboce

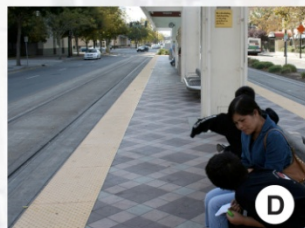
PRECEDENT IMAGES



A



C



D



E



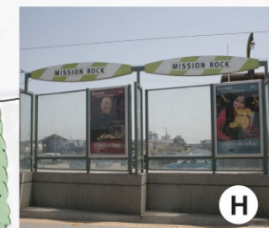
B



F



G



H



I



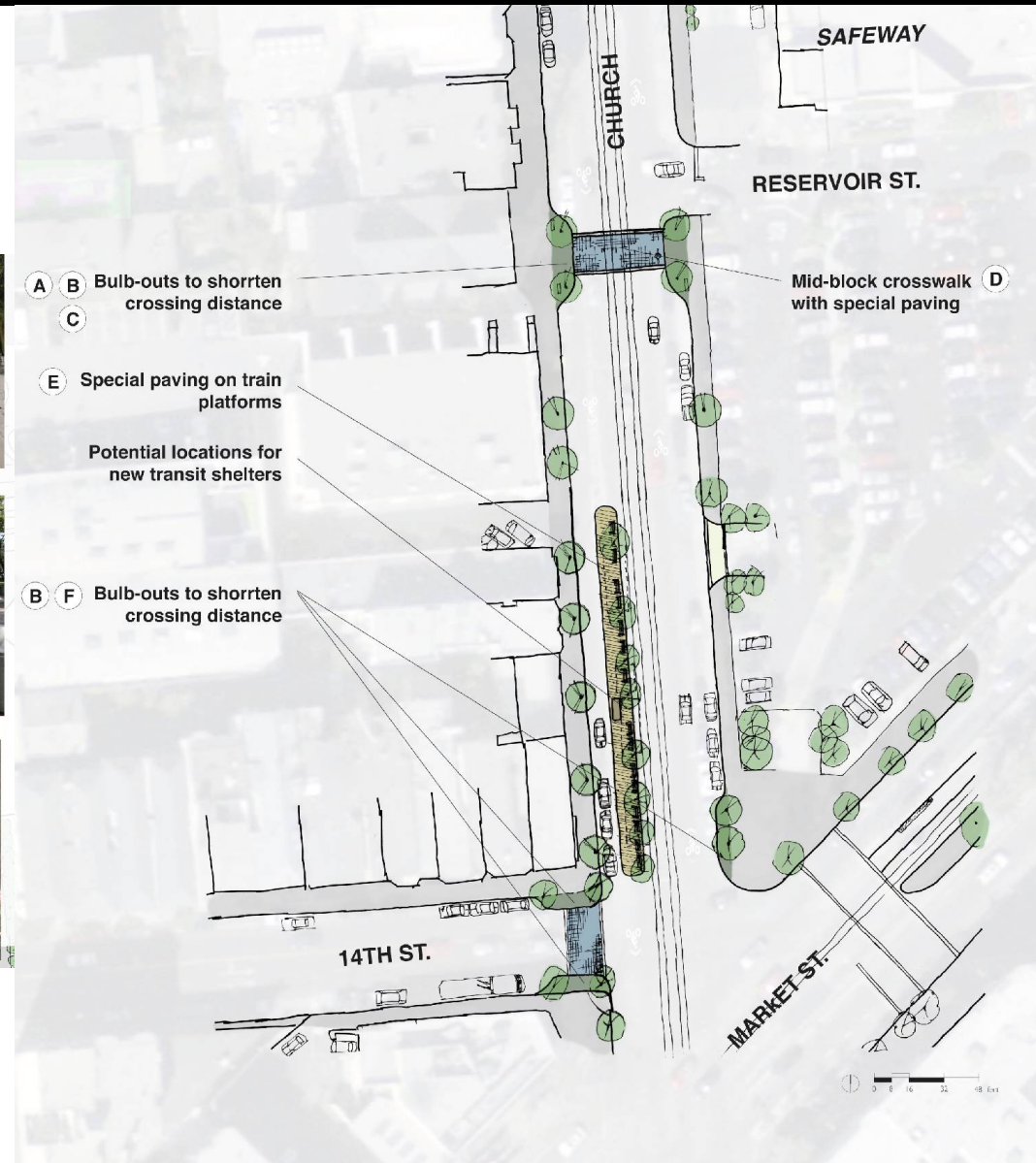
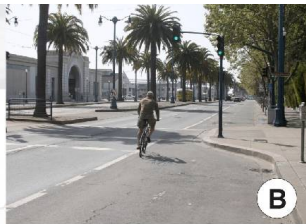
J



K

Plan Area 4: Church

PRECEDENT IMAGES

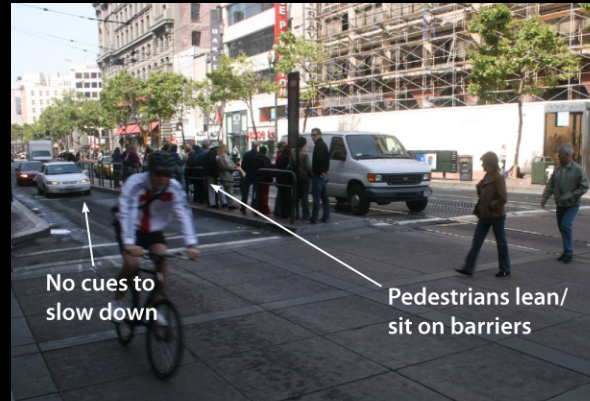


RHAA and DPW Involvement

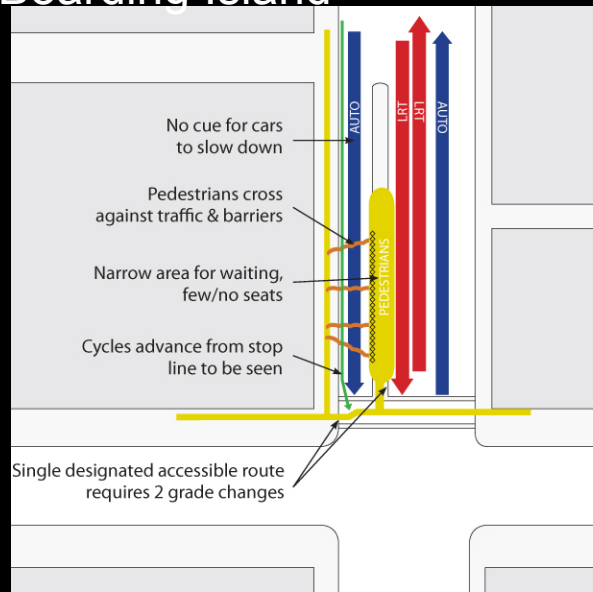


SF Boarding Platform Analysis

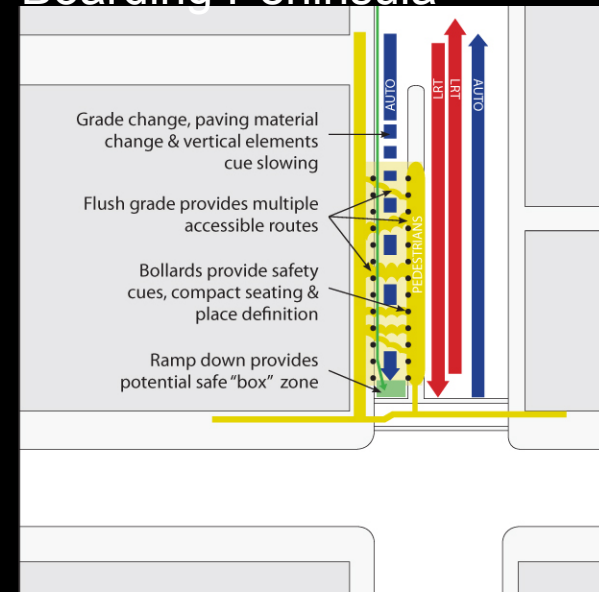
Existing



Typical Divided Boarding Island



Alternative Permeable Boarding Peninsula



Precedents

Special Paving



San Francisco, CA



Portland, OR

Detectable Warning Strip



Hayes Green, SF

Signage



Embarcadero, San Francisco

Trees in Boarding Island



MAX Light Rail,
Portland

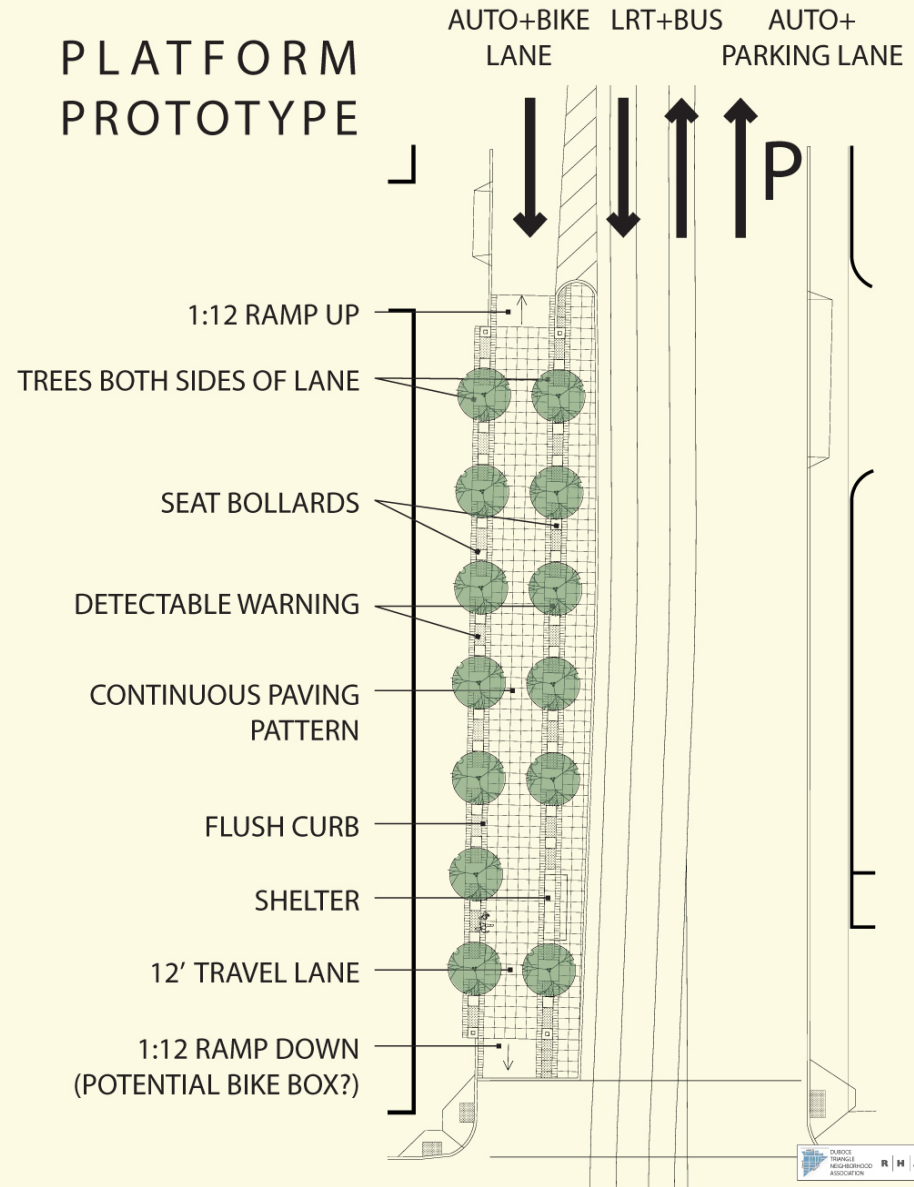


VTA Light Rail, San Jose

Shared Space – Safety Patterning Study



PLATFORM PROTOTYPE



Island vs. Peninsula Concept

Existing Condition – Boarding Island



Proposed Condition – Boarding Peninsula



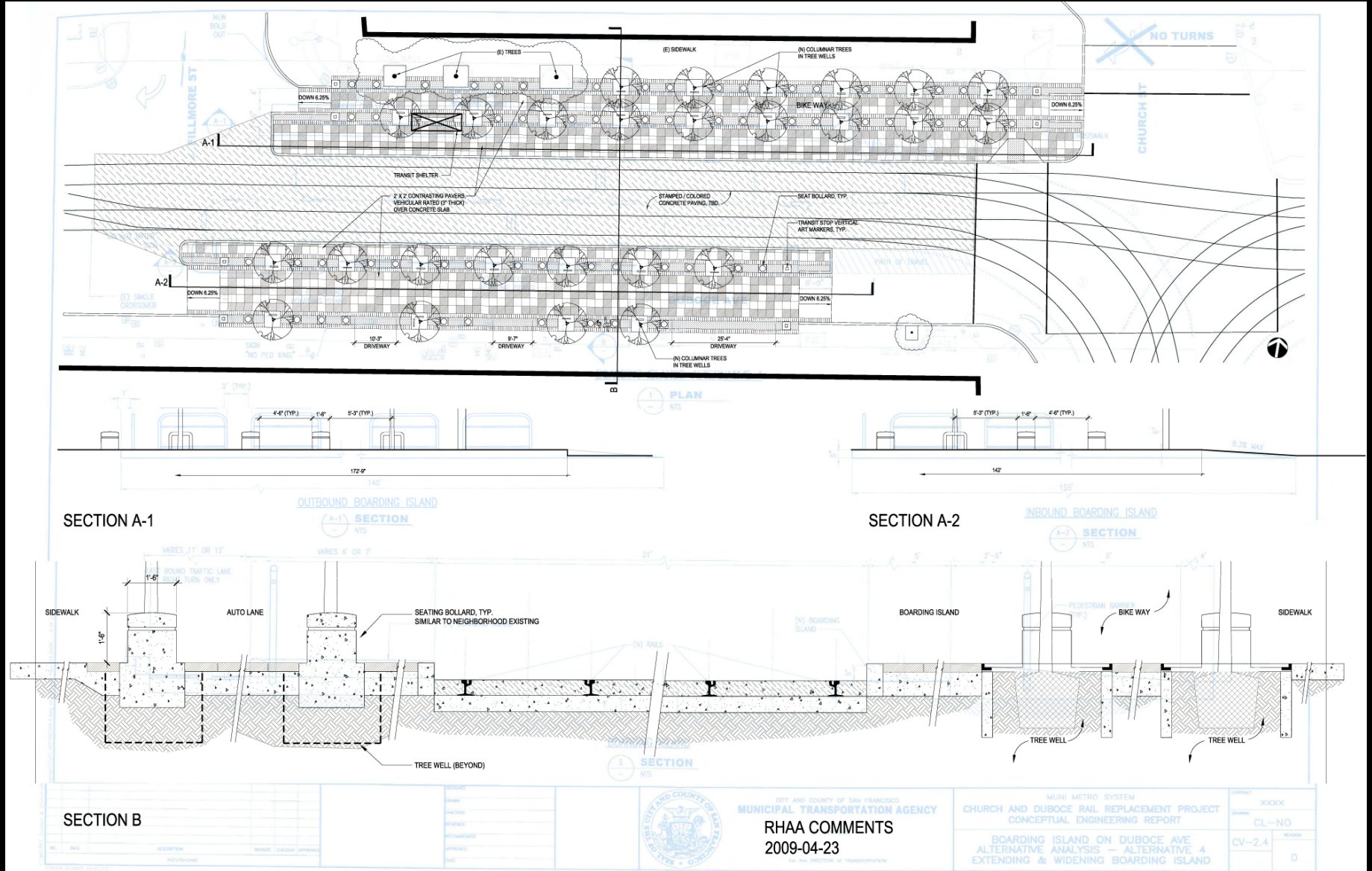
Duboce at Steiner & Sanchez Concept



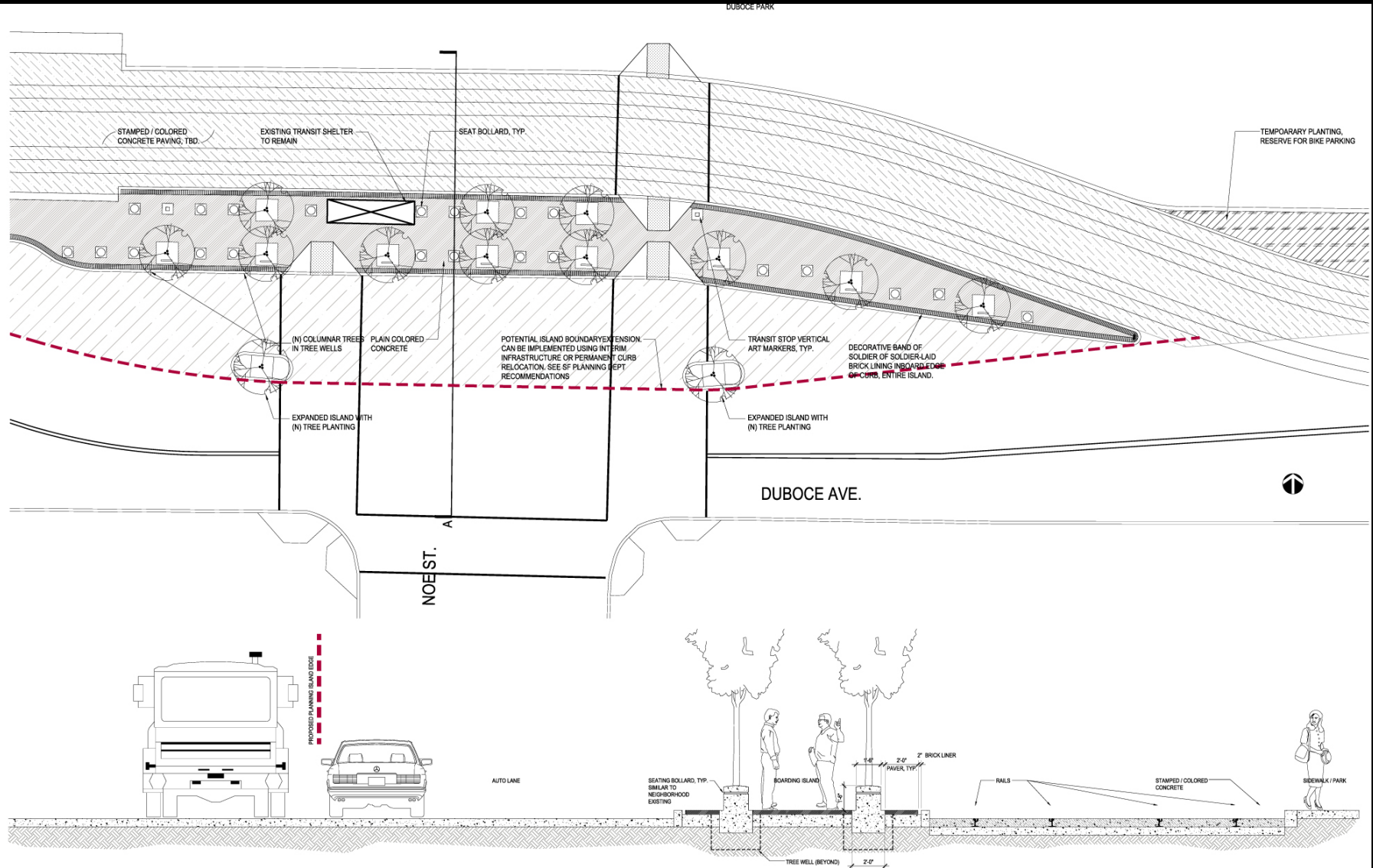
Overall Site Concept



Design Dialogue



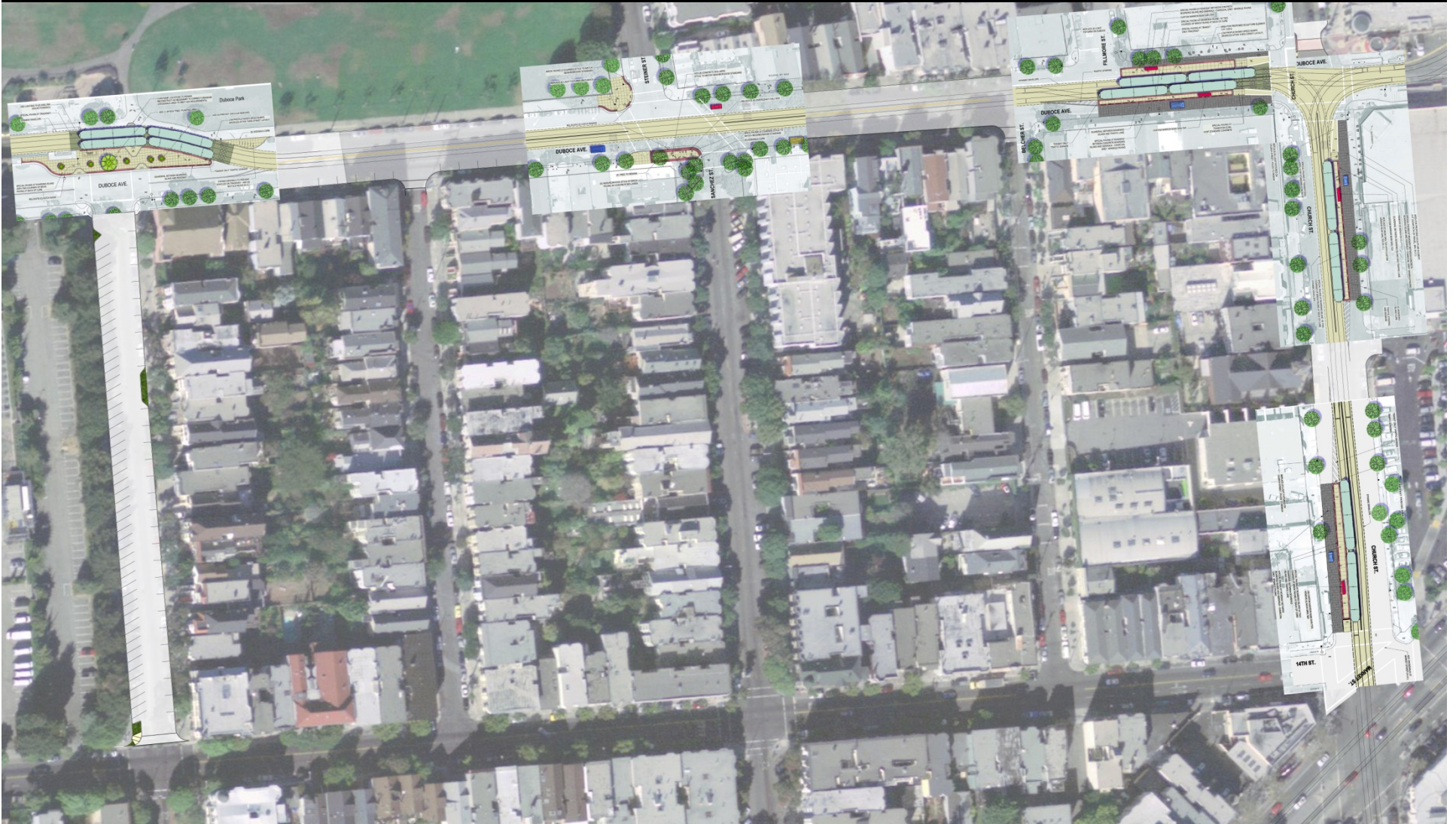
Design Dialogue



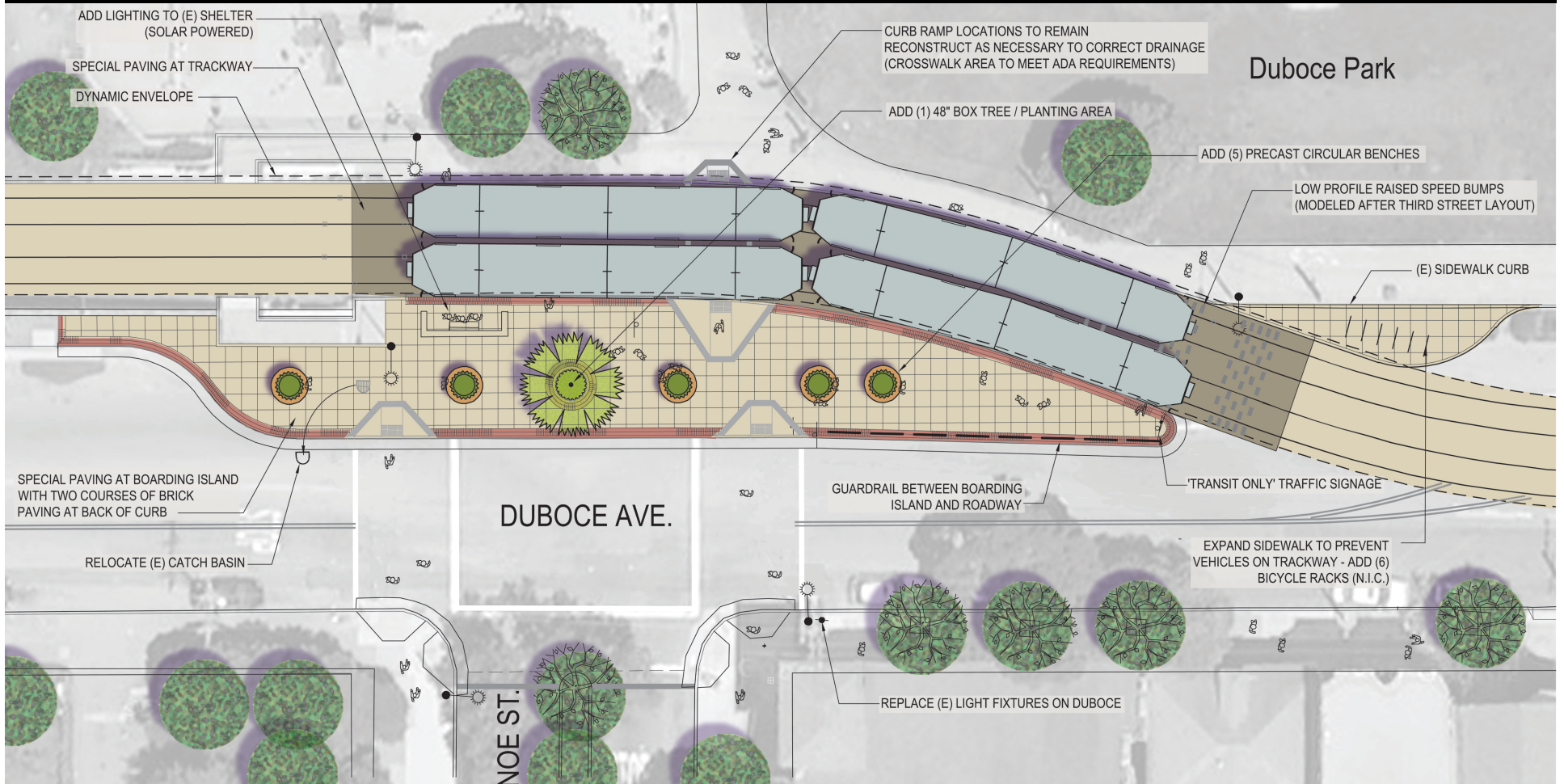
SECTION A

Streetscape Improvement Plan

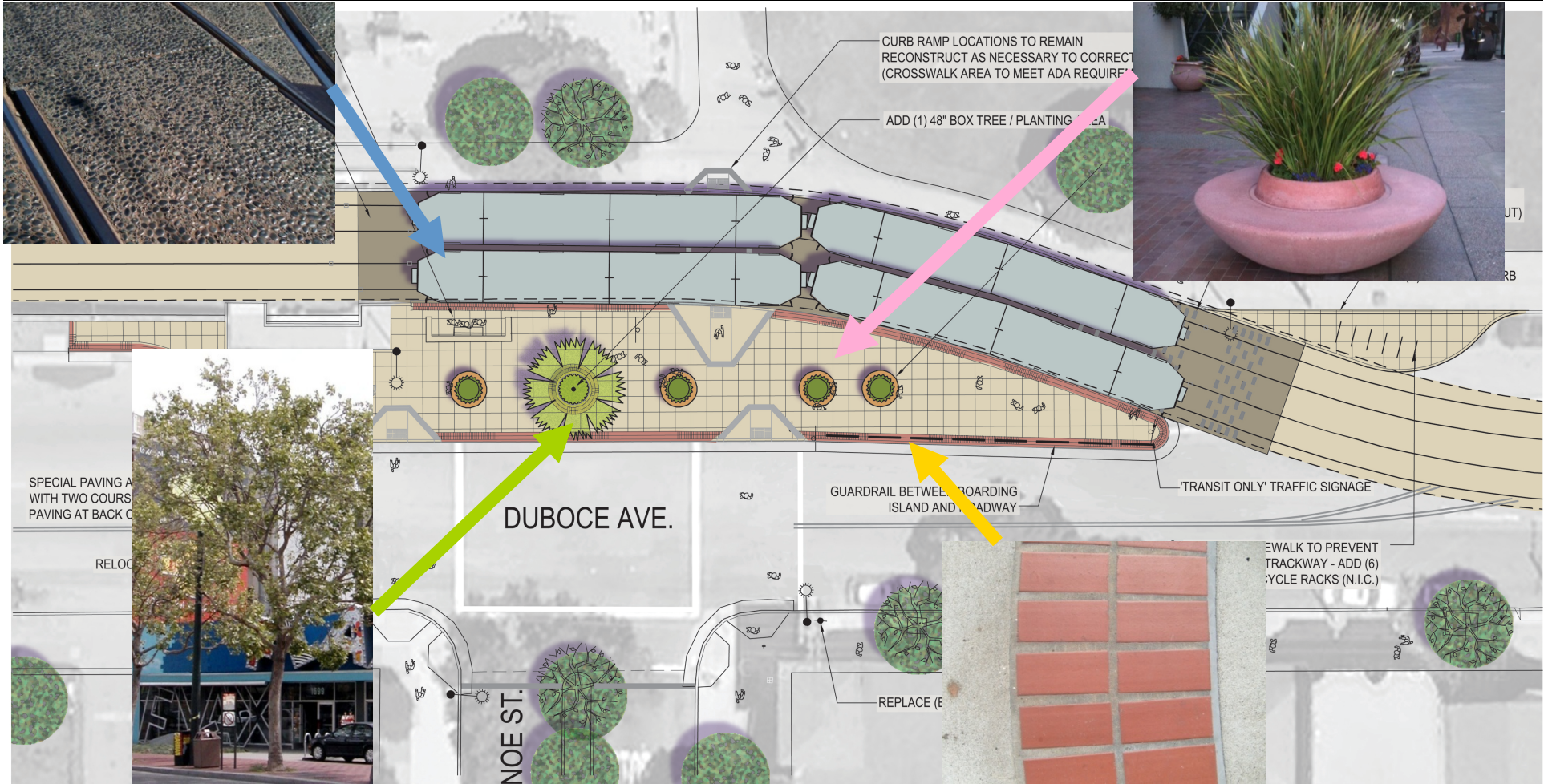
Collaborative Working Process: SFMTA, DPW, PUC, DTNA, RHAA, Castro/CBD, and other City Agencies



Noe Street Boarding Island



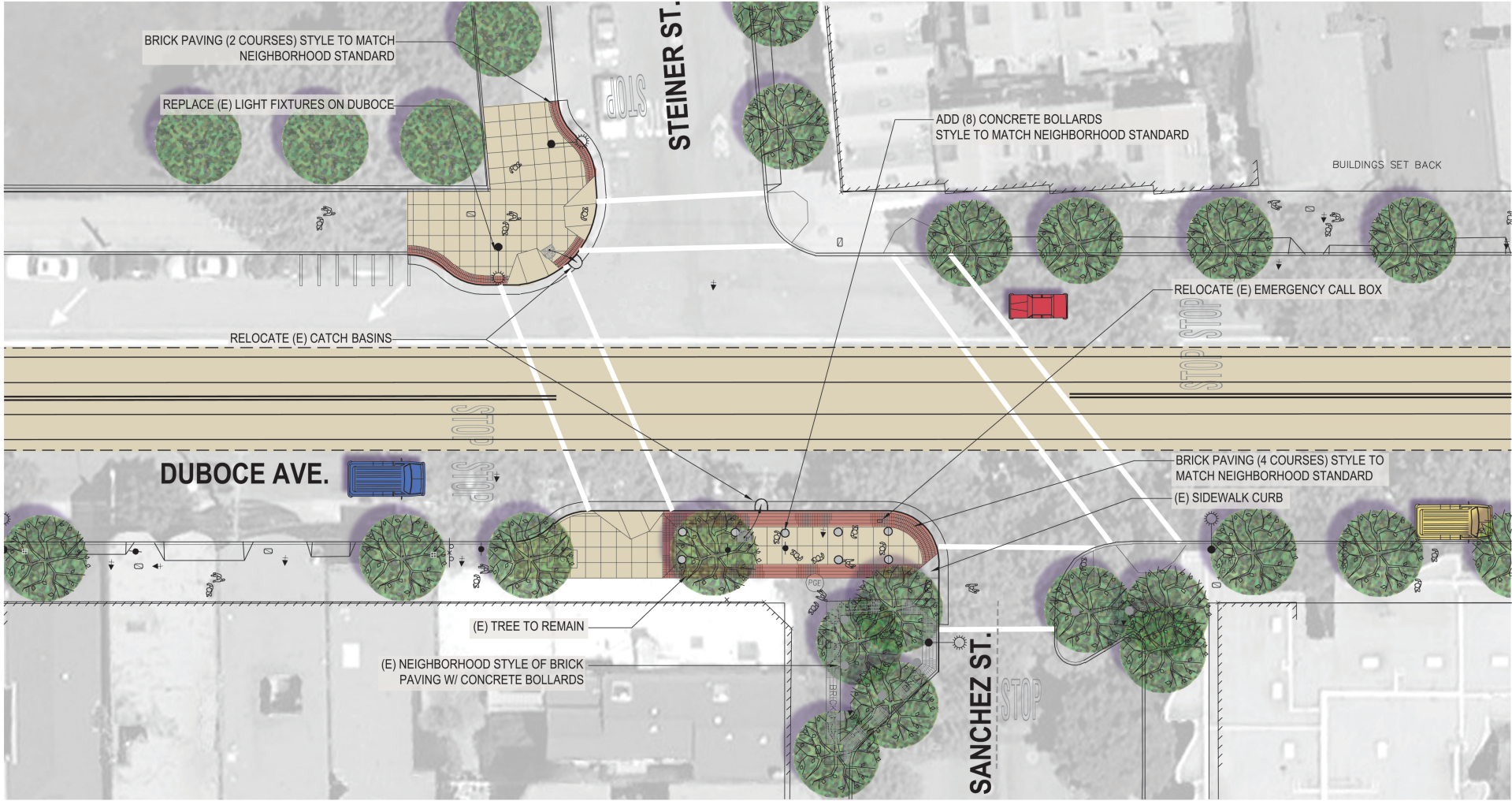
Noe Street Boarding Island with Design Elements



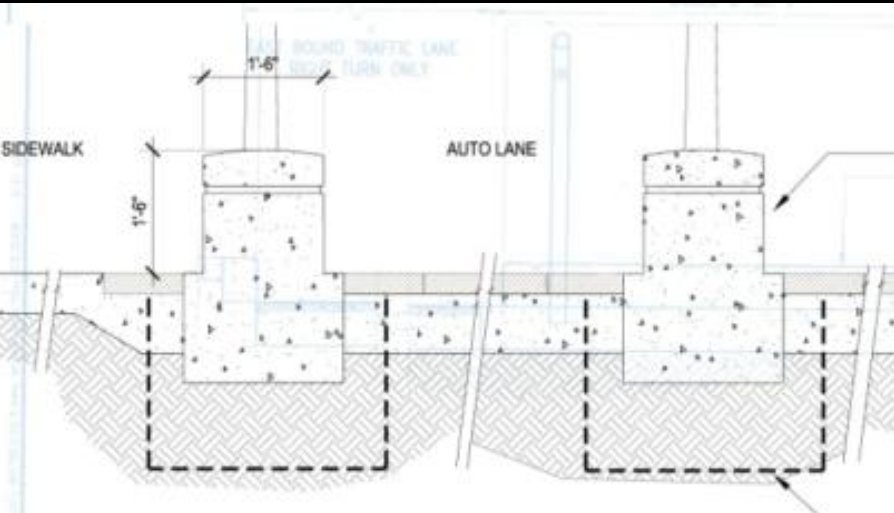
Noe Street Boarding Island Design Elements



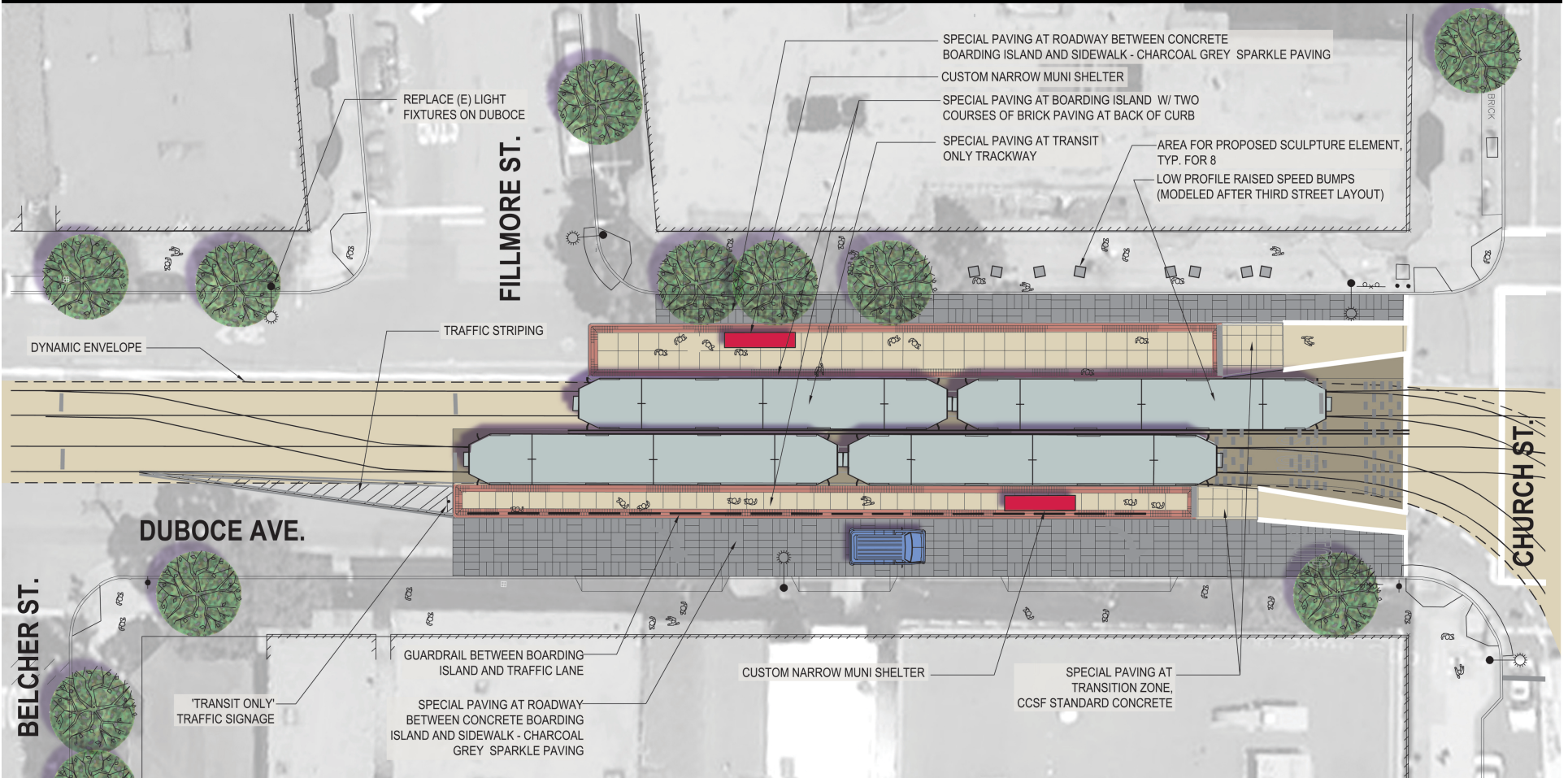
Duboce at Steiner and Sanchez Street - Bulbouts



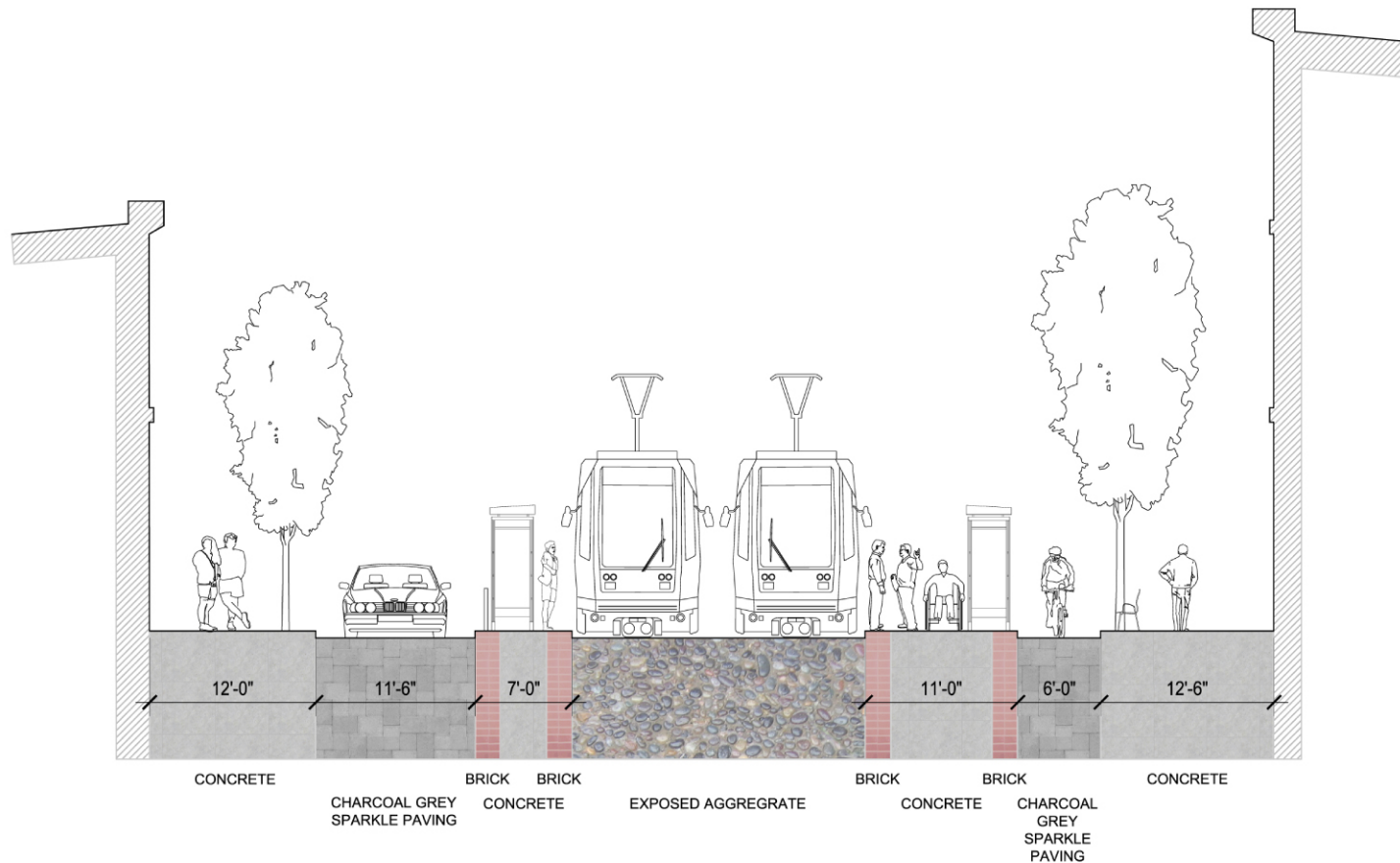
Duboce at Steiner and Sanchez Street - Bollards



Duboce and Church Boarding Islands



Duboce and Church Boarding Islands



Duboce and Church Boarding Island Features

Paving Treatments



Bus Shelter

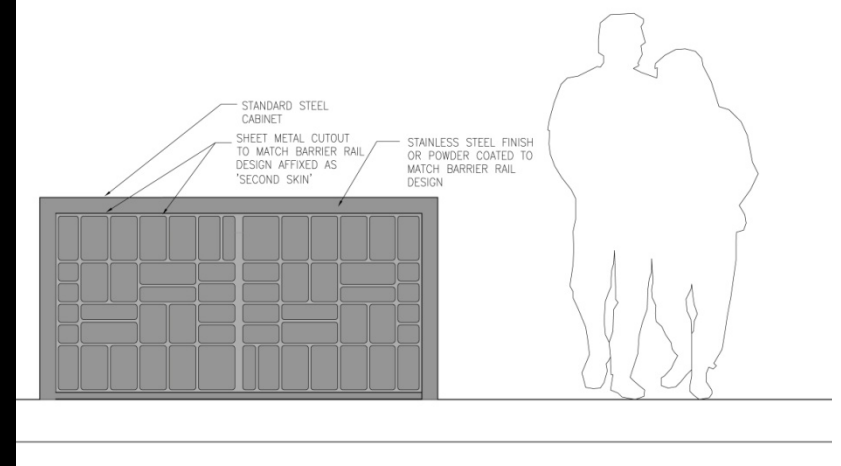


Utility Box Art Elements

Mural by Artist



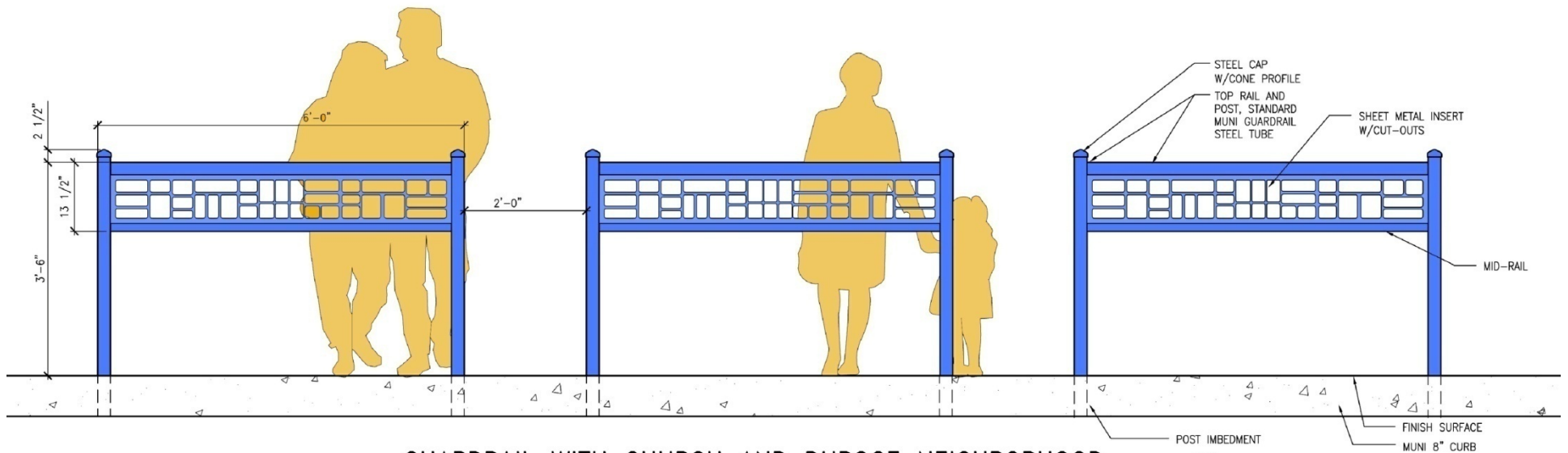
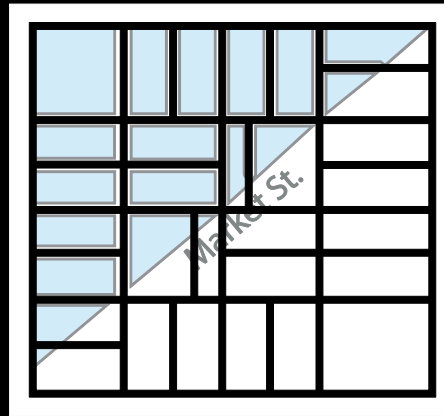
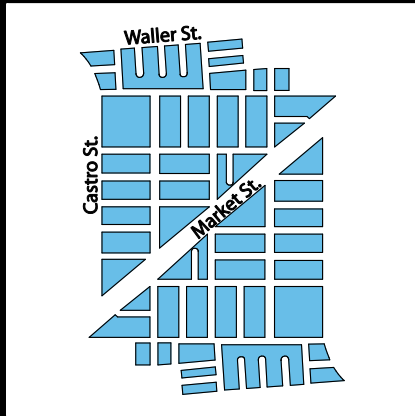
Steel Skin Application



Screenprinted Vinyl Covers



Guardrail Design and Special Shared Roadway Paving



GUARDRAIL WITH CHURCH AND DUBOCE NEIGHBORHOOD
INSET AND VERTICAL POSTS AND CAPS

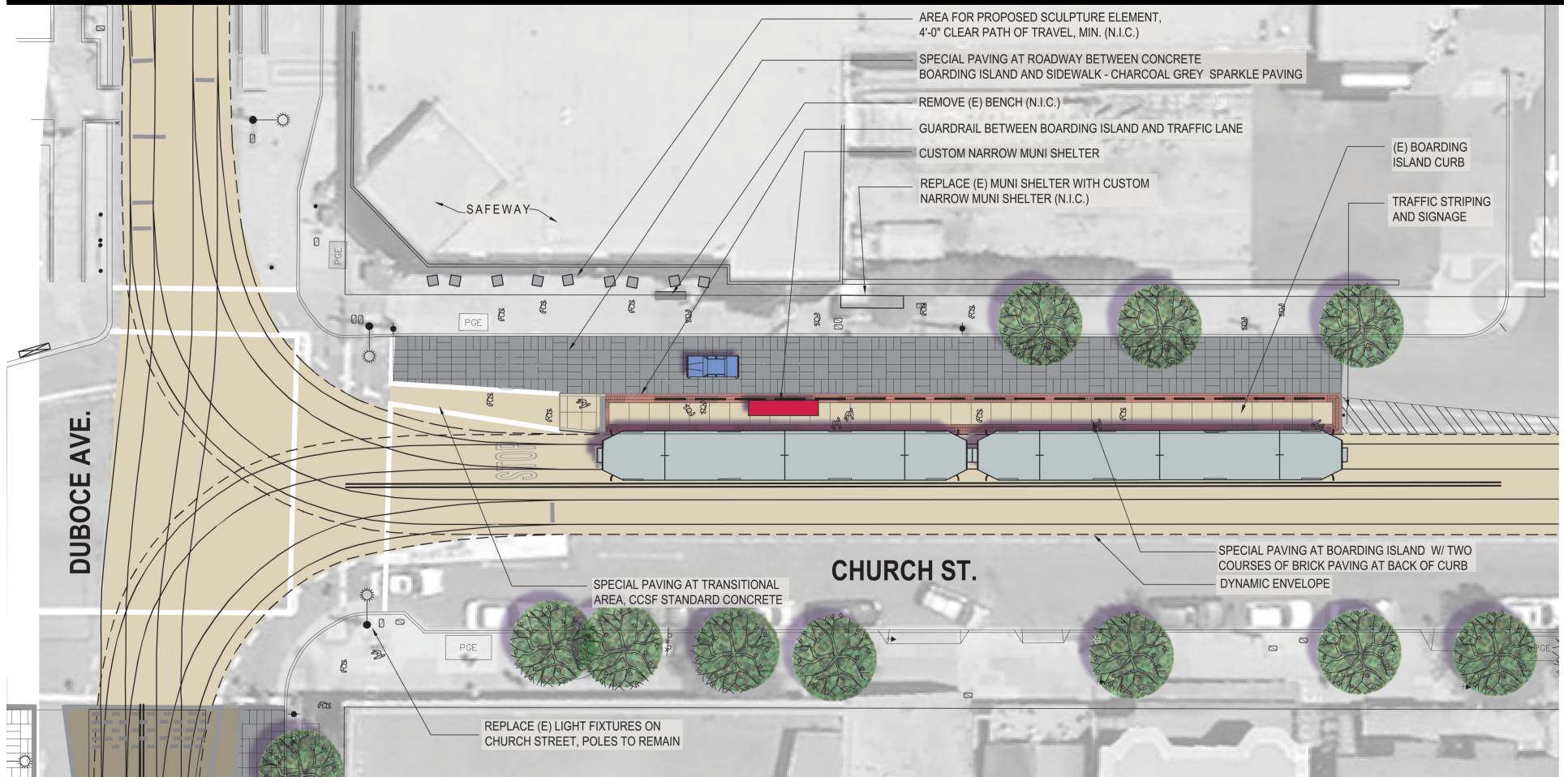
SCALE: 1"=1'-0"

(B)

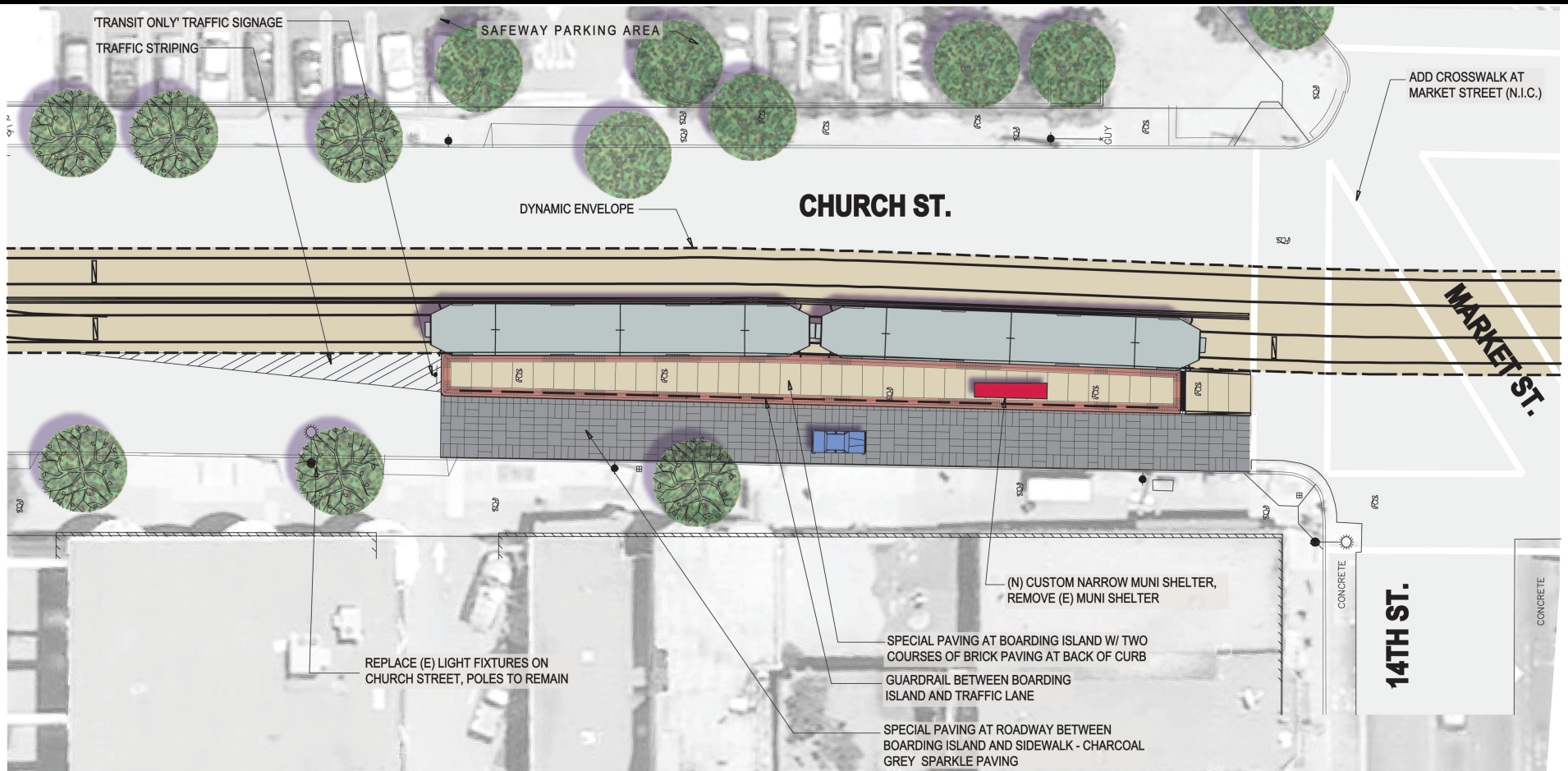




Church and Duboce Street Boarding Island



Church Street -14th Street Boarding Island



Lessons for Future Projects



Funding Sources

Federal Formula + Local Match (CIP) <i>(Standard light rail system replacement)</i>	\$28.65 M
Local Prop K - Pedestrian Prioritizing Program <i>(Bulbouts on Duboce)</i>	\$220K
Federal Transportation Enhancement Funds <i>(Bulbouts, crosswalk)</i>	\$388K
CPUC Funding <i>(street lightings)</i>	\$500K
Other Federal, State and local Funding <i>(water, sewer and paving)</i>	\$2.20 M
Total	\$32 M

Lessons for Future Projects

- Be opportunistic, taking advantage of large capital projects to support place-making
- Requires community organization and a neighborhood capacity to get things done
- Take advantage of best practices in street design – safety & sustainability
- Promote collaborative working process and communication
- Garner support and encouragement from City officials
- Setting aside funds for public place-making improvements from the beginning during the planning stages