

# Taking Down a Freeway to Reknit a Neighborhood

# THE URBANIST



Should  
280  
Be Taken  
Down?

# Taking Down a Freeway to Reknit a Neighborhood

1. Existing Conditions

2. The Three Big Moves

- Undergrounding Caltrain and High Speed Rail
- Taking down I-280 and replacing it with a surface boulevard
- Redeveloping the 4<sup>th</sup> and King Railyards

3. Next Steps

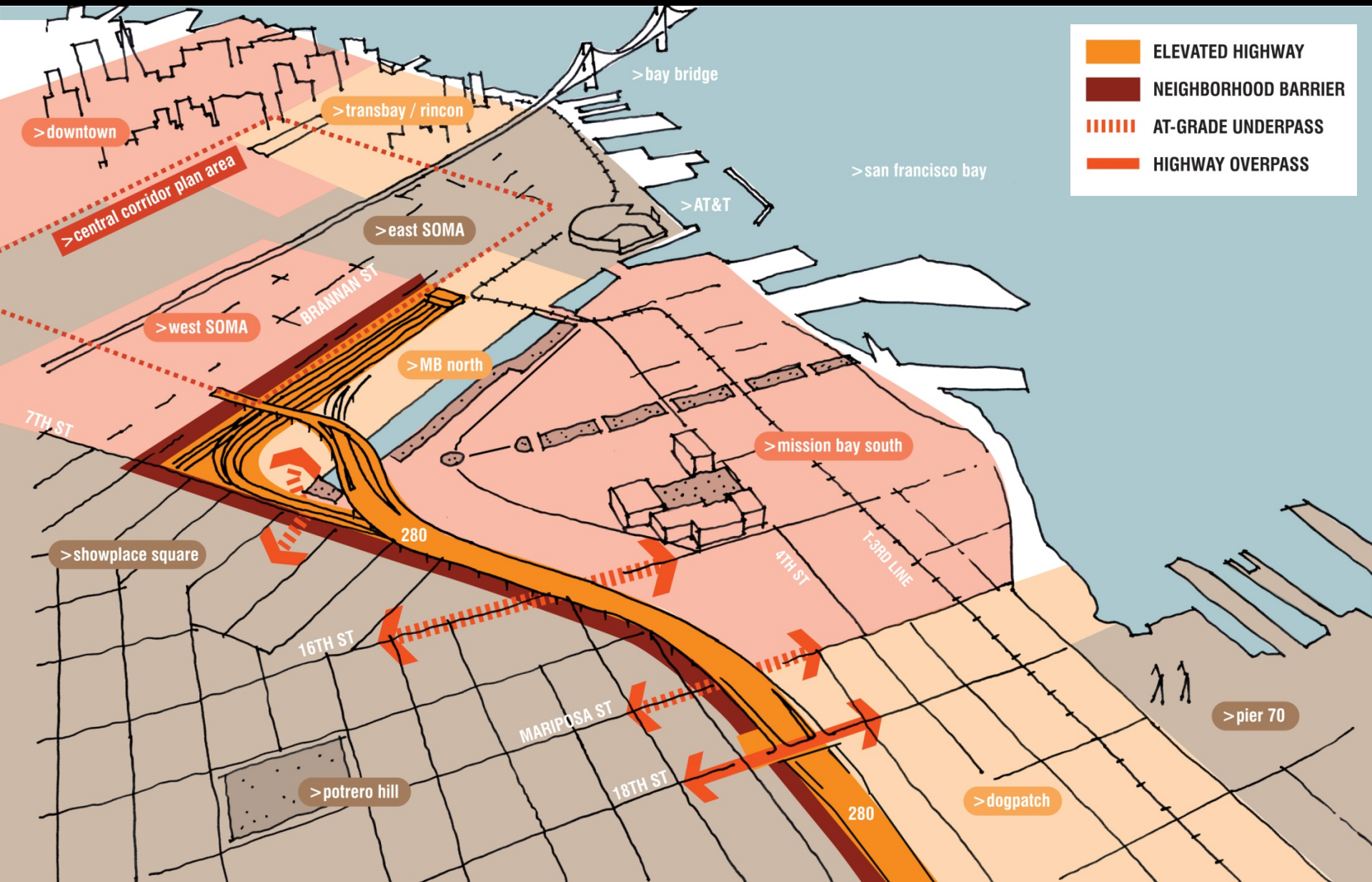


# Existing Conditions





# Existing Context: Disconnected Neighborhoods













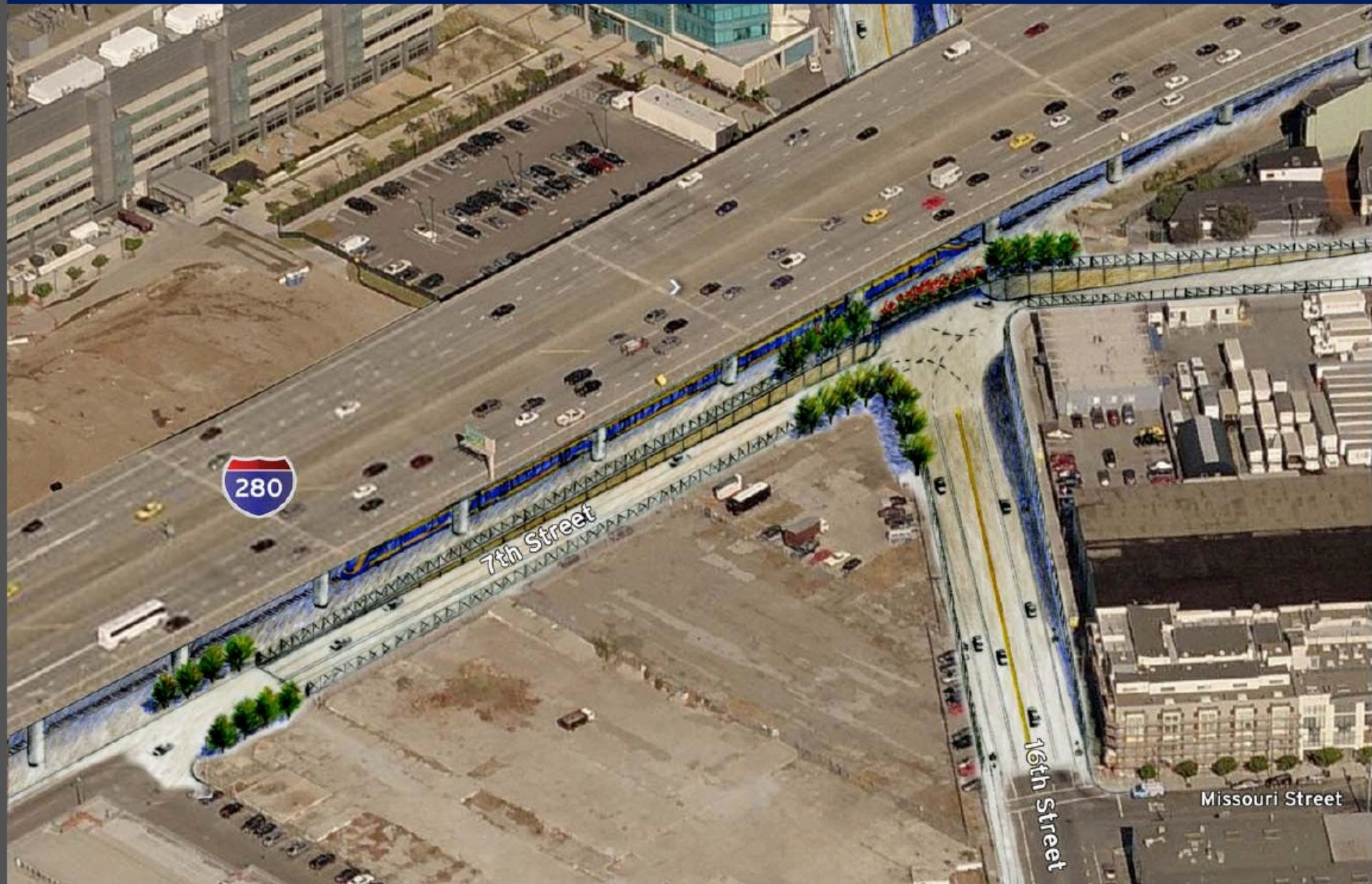






# California High Speed Rail Authority Proposal





# California High Speed Rail Authority Proposal





**California High Speed Rail Authority Proposal**



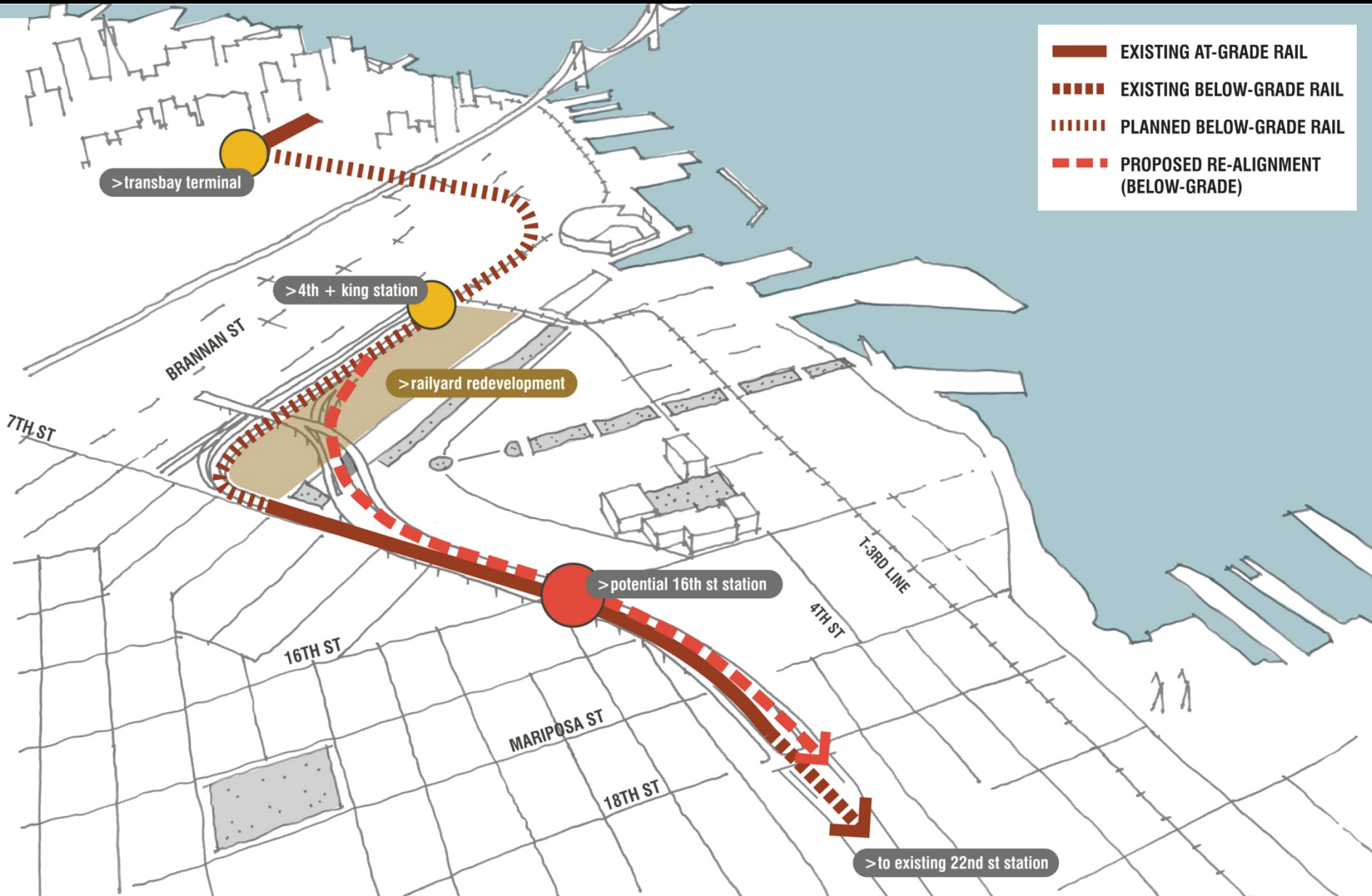
A sepia-toned photograph of a city skyline, likely New York City, viewed from across a set of curved train tracks. The tracks run from the foreground into the middle ground, curving towards the right. In the background, a dense cluster of skyscrapers and buildings forms the city skyline. To the right, a large, curved building features a prominent mural with various symbols and figures. The overall tone is warm and historical.

# Three Big Moves

# **Move #1: Underground Caltrain and High Speed Rail**



# Transit Concept





**Move #2: Tear Down I-280 and  
Replace it with a Surface Boulevard**

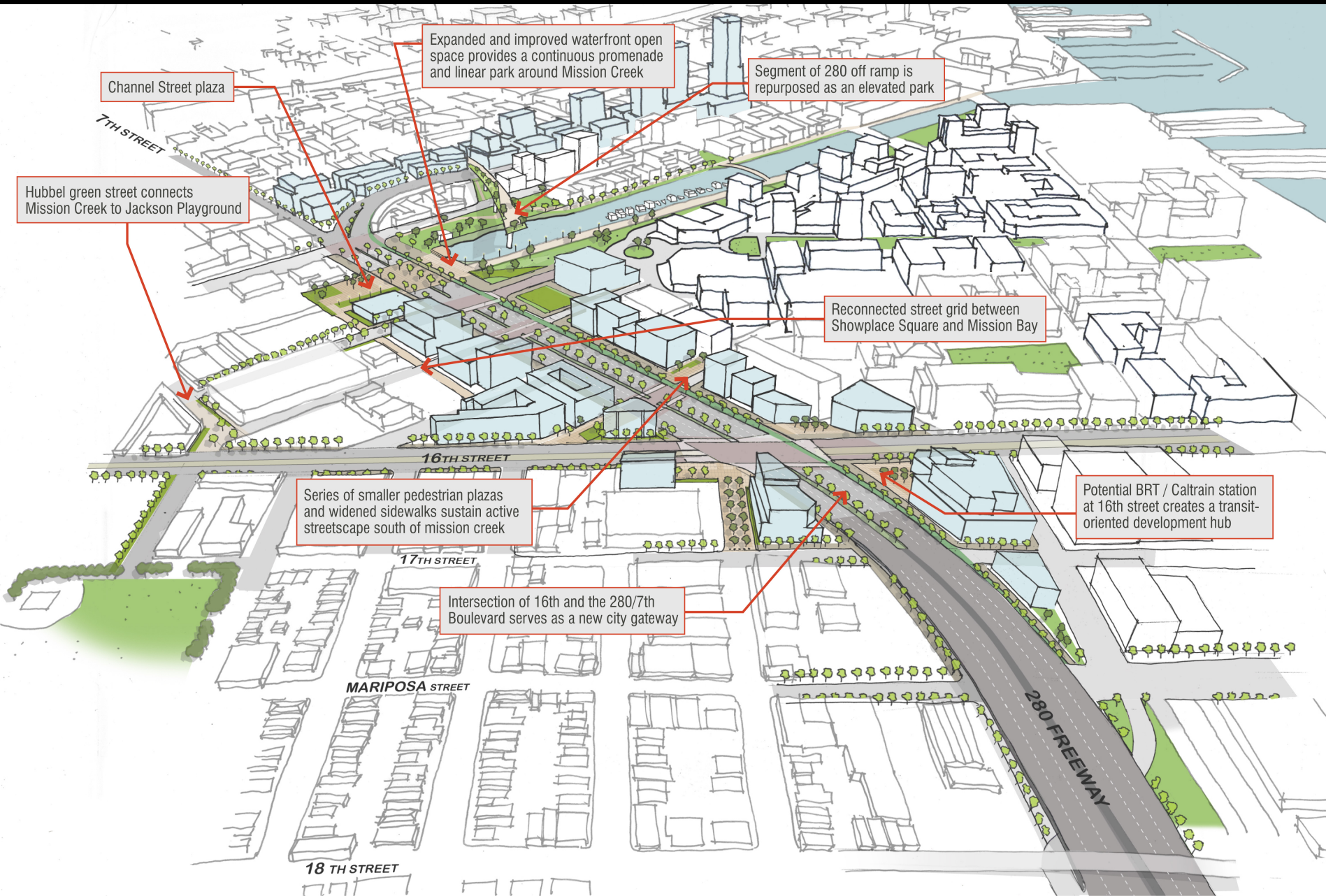


# The New Boulevard





# The New Boulevard





# Possible Benefits of the Boulevard Concept

- Hubbell green street connects Mission Creek with Jackson Playground
- Creation of new Channel Street Plaza
- Urban edge provides variety of waterfront and protects existing infrastructure
- Segment of demolished I-280 repurposed as raised park
- Continuous pedestrian promenade and linear park along Mission Creek
- Reconnect street grid with Mission Bay development
- Possible BRT, HSR, & Caltrain stations located @ 16<sup>th</sup> and 7<sup>th</sup> streets to create transit hub

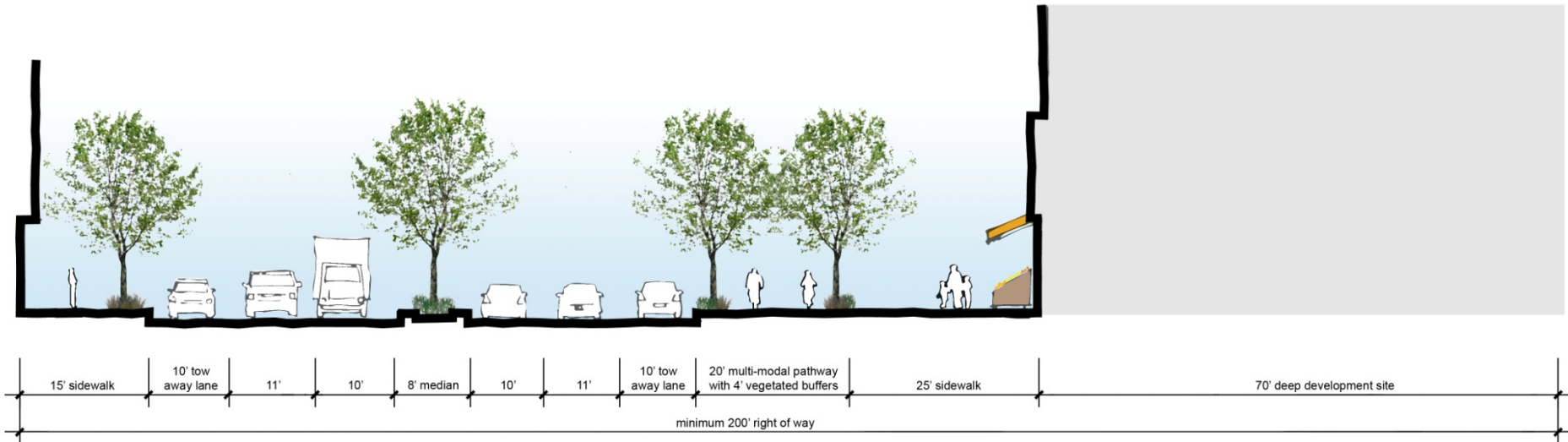


# Possible Benefits of the Boulevard Concept

- Intersection of 16<sup>th</sup> and 7<sup>th</sup> as a possible new gateway into Downtown San Francisco
- Series of smaller pedestrian plazas and areas of widened sidewalks sustain active streetscape south of Mission Creek



# Future Section





# Current View: 7<sup>th</sup> Street to Mission Creek and Beyond

