



STUDIO E

A R C H I T E C T S

embrace everyday phenomena and rituals

express a richer understanding of place

respond to the natural environment



G Lofts West, San Diego

Studio E Architects



Studio E Architects

Horton Plaza Shopping Center

Historic Gaslamp Quarter

PROJECT SITE

Loft District

Petco Park

San Diego Convention Center

San Diego Bay

CONTEXT





Retail

Main Entrance

Leasing Office

Live/Work Unit

Underground Parking

2-Story Townhome Unit

Courtyard

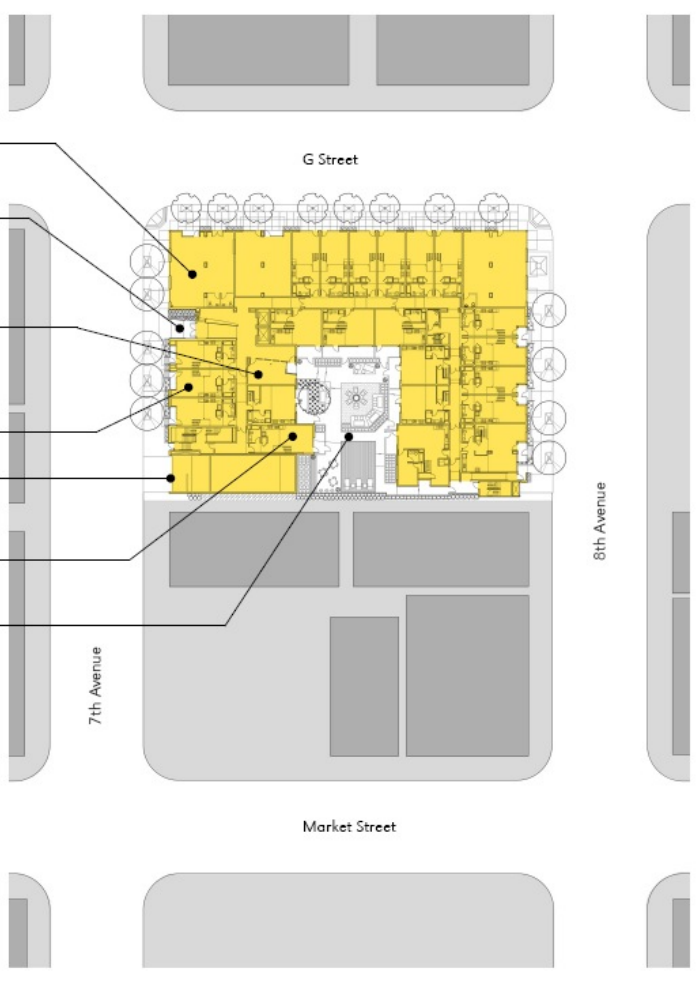
G Street

8th Avenue

7th Avenue

Market Street

SITE PLAN



2-Story Townhome Unit

Penthouse Unit

One-Bedroom Unit

Platform Loft Unit

Live/Work Unit

Courtyard

Underground Parking



SECTION LOOKING NORTH







Fahrenheit, San Diego

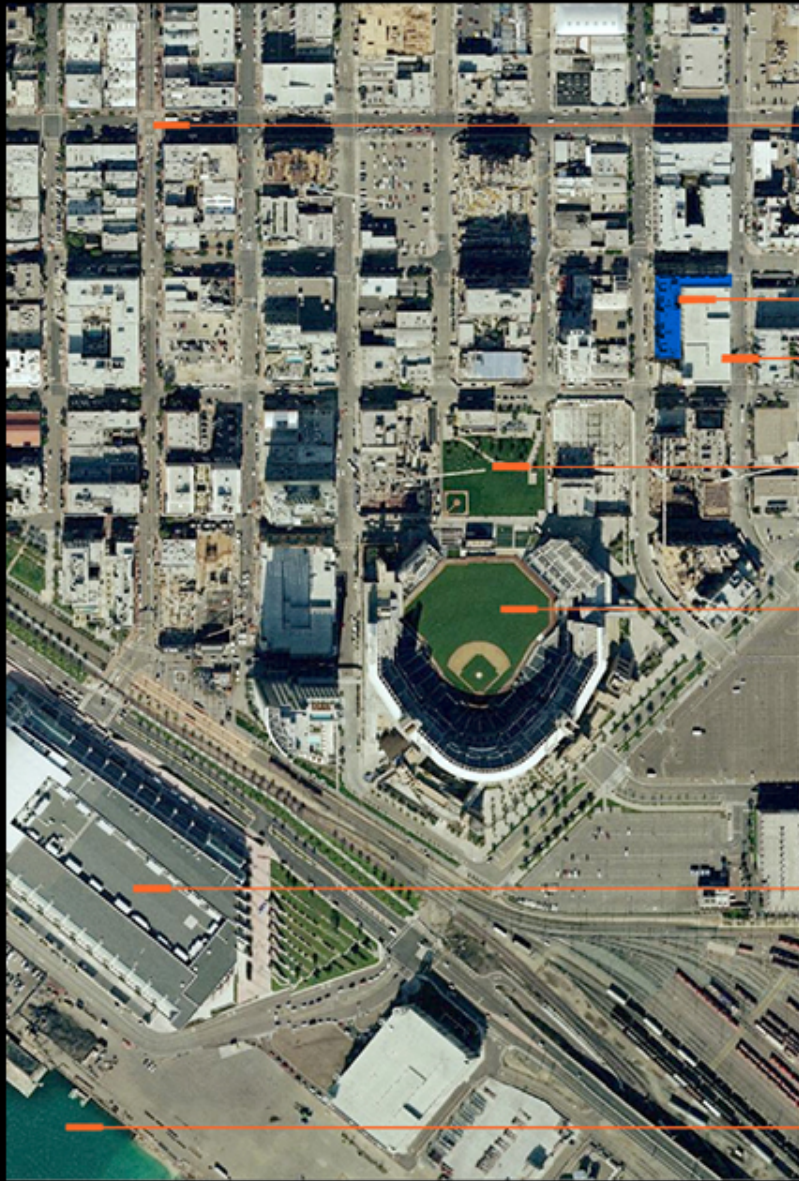


Studio E Architects



Studio E Architects





Historic Gaslamp Quarter

Project Site

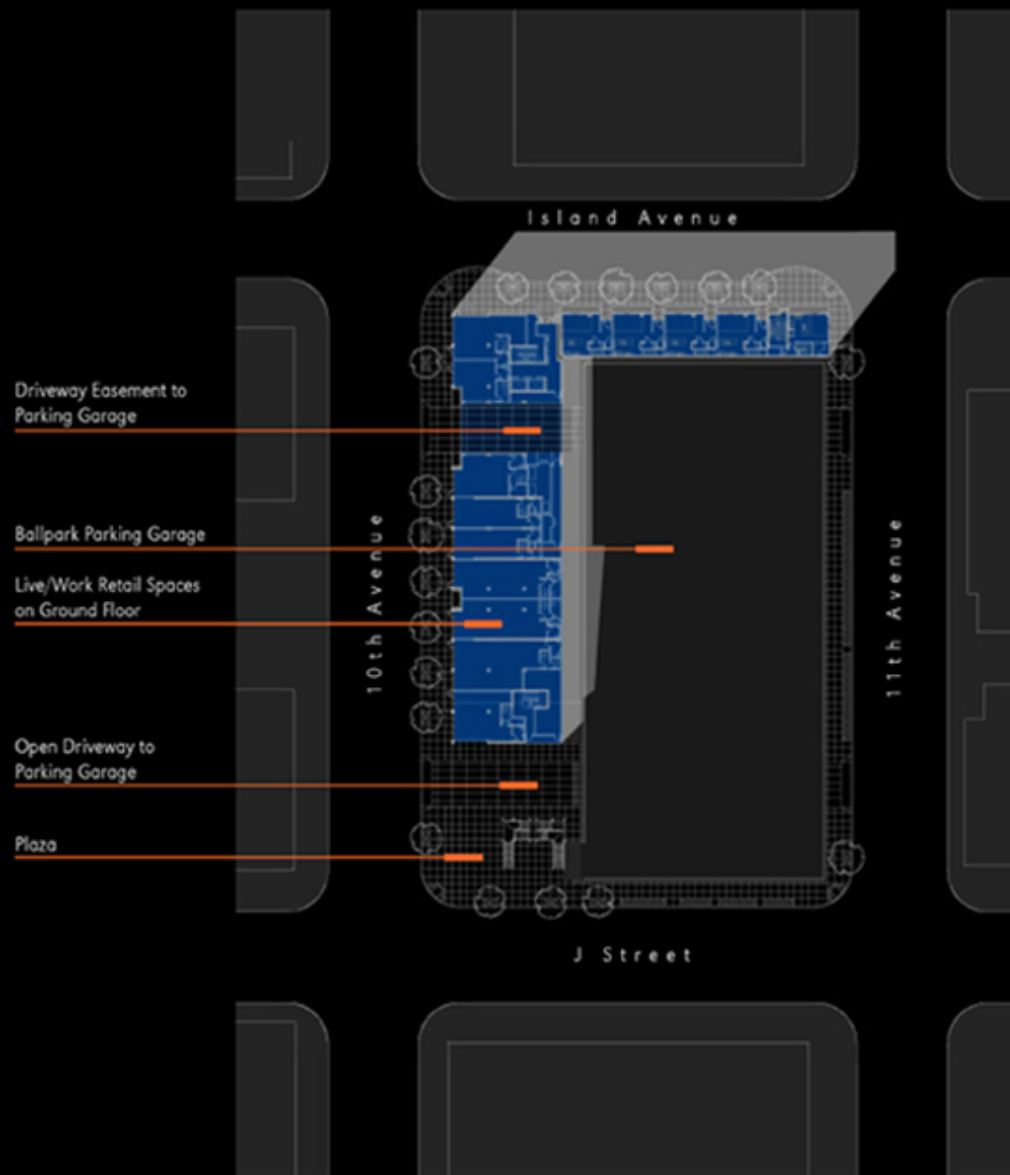
Ballpark Parking Garage

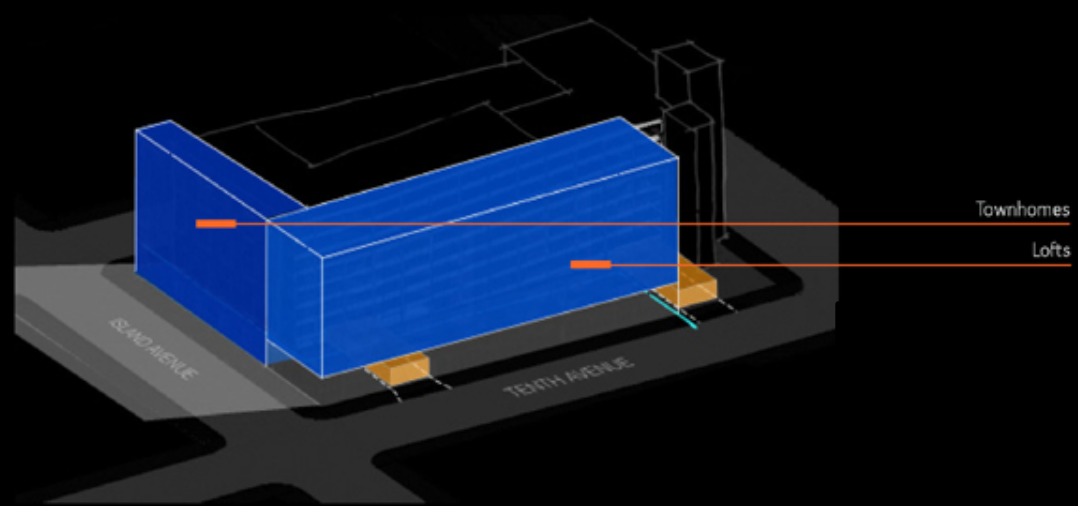
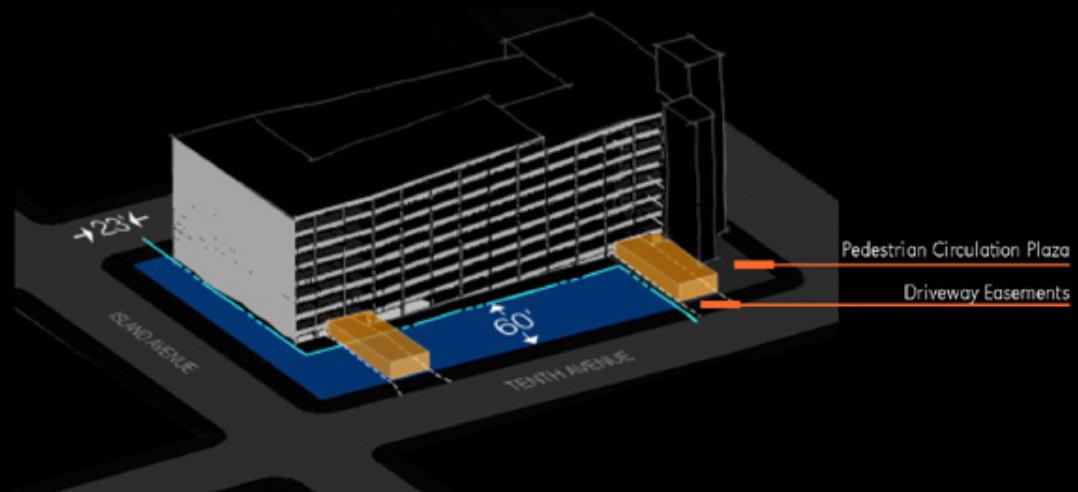
Neighborhood Park

Petco Park

San Diego Convention Center

San Diego Bay



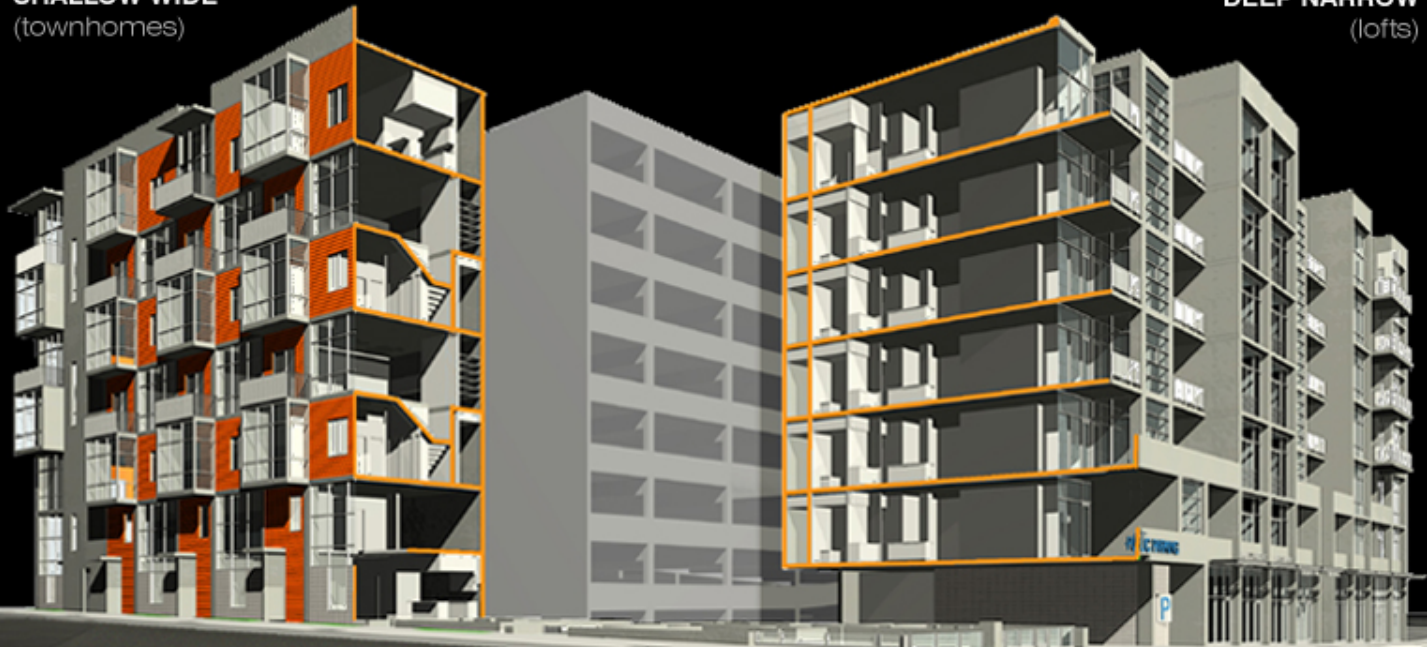




Studio E Architects

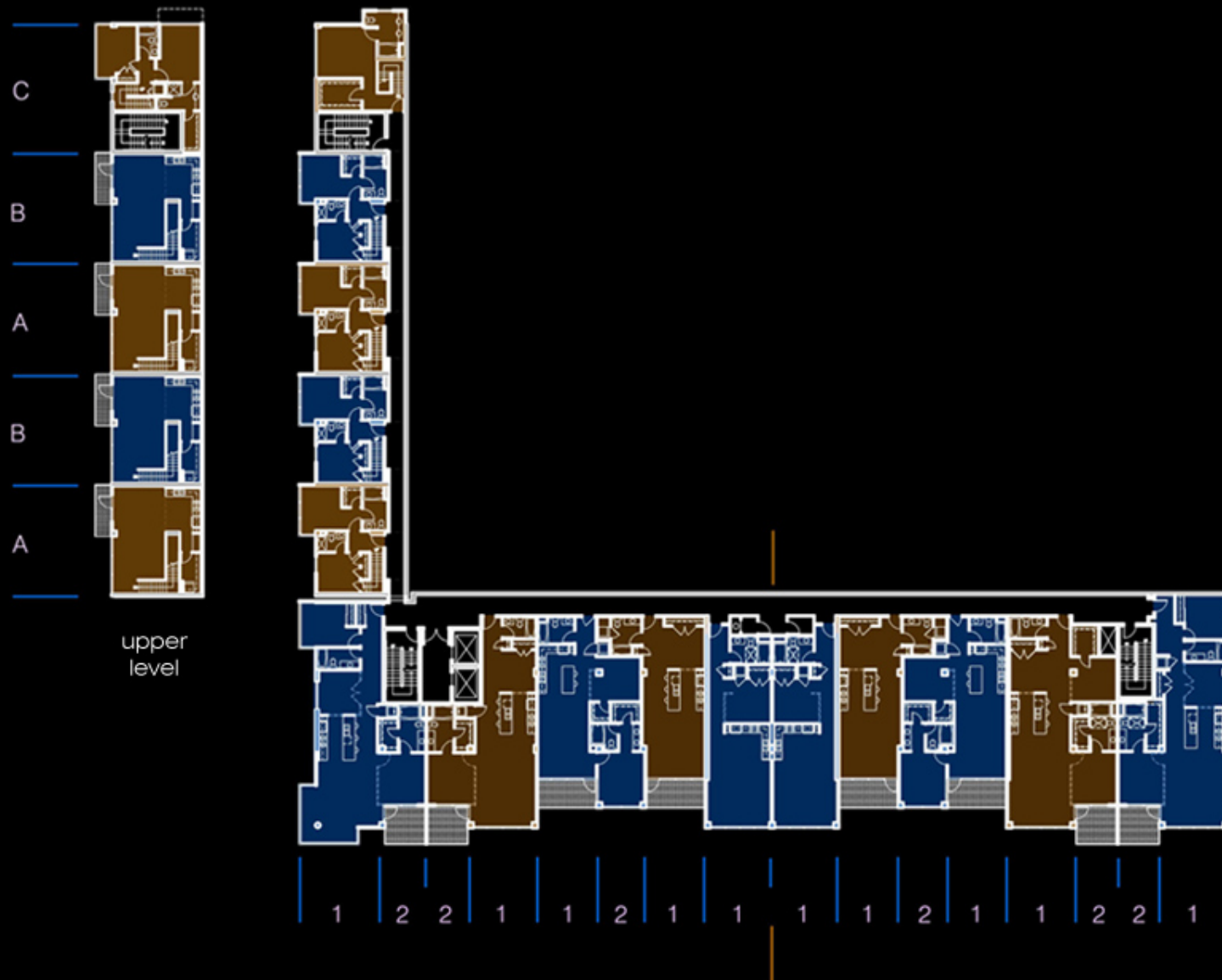
SHALLOW WIDE
(townhomes)

DEEP NARROW
(lofts)



Townhomes along Island Avenue hang over the sidewalk to extend long views down the San Diego gridiron. High ceiling lofts along 10th Avenue have room-sized balconies with views to the ballpark.

Studio E Architects

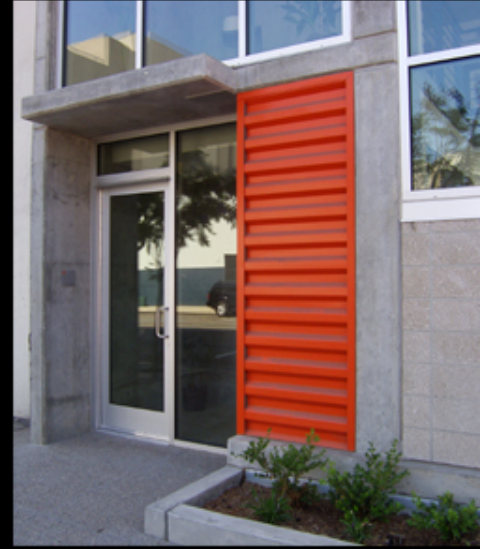


Shallow & Wide vs. Deep & Narrow. The syncopated rhythm of the Tenth Avenue facade contrast the regulated rhythm of the Island Avenue bays.



Studio E Architects

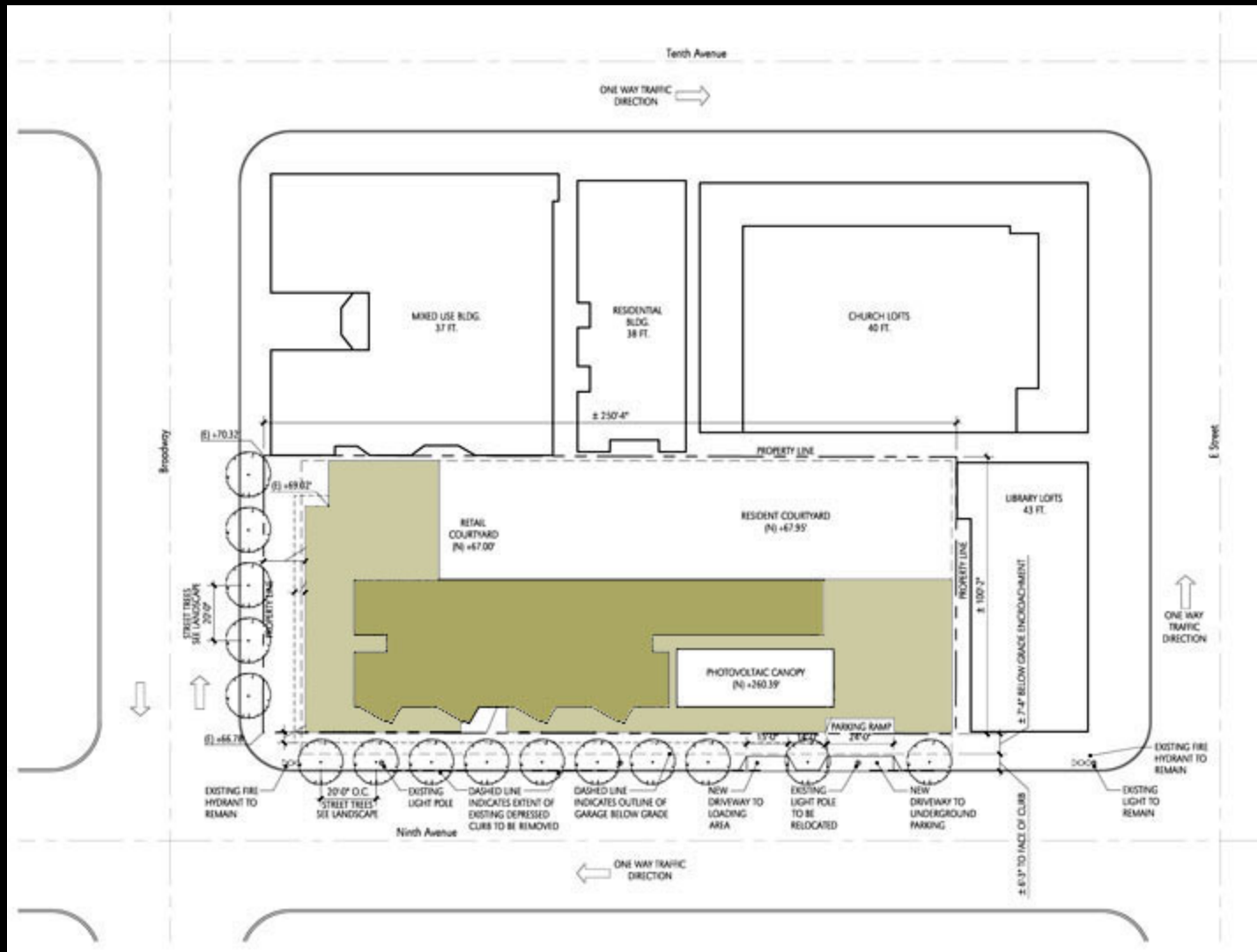


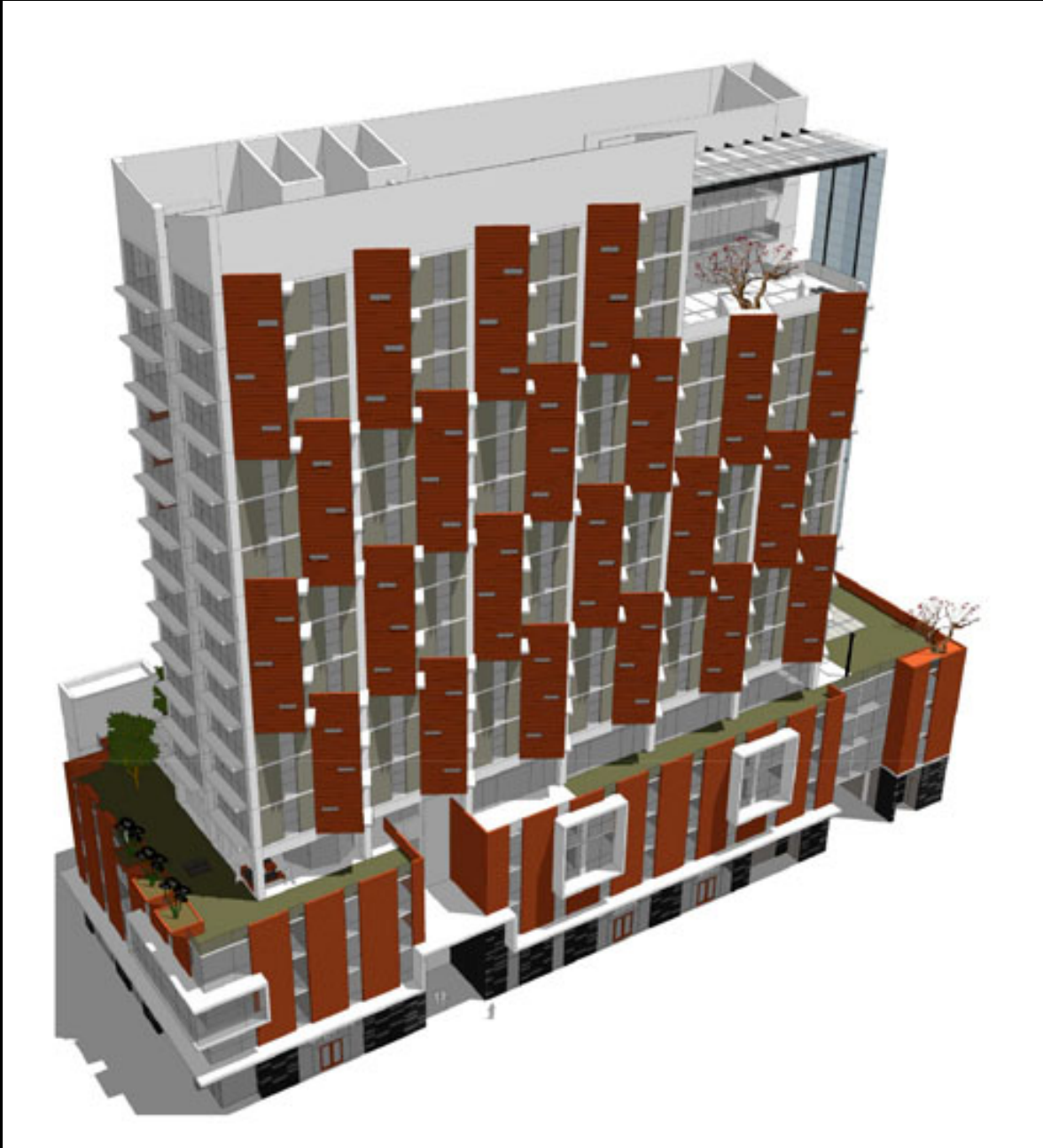


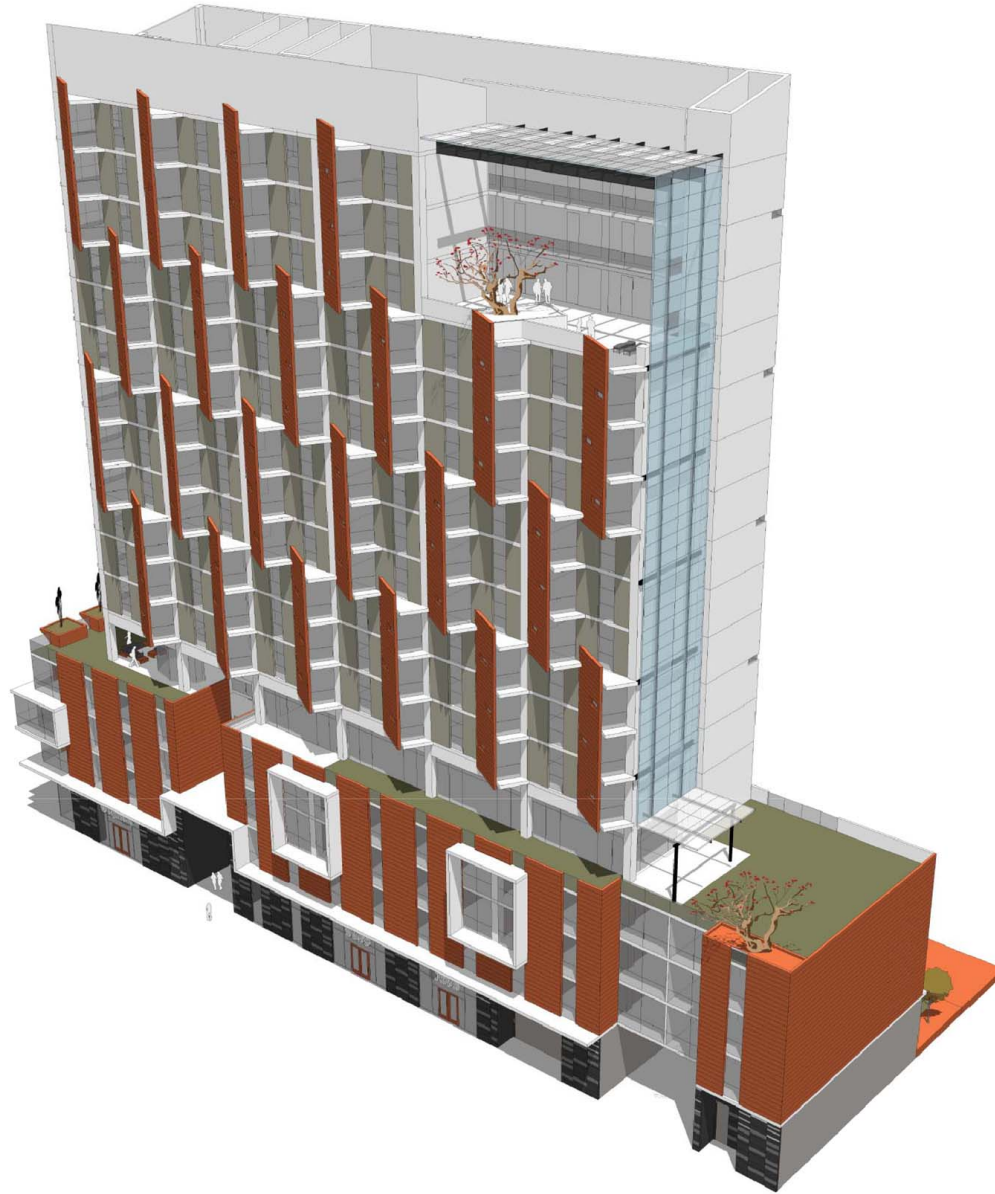


9th and Broadway Affordable Housing, San Diego

Studio E Architects











Studio E Architects



Studio E Architects

