

# The Useful Theory Project

a design salon

Tim Culvahouse  
Anne Fougeron  
Andrew Dunbar  
Walter Hood  
Nicholas de Monchaux

SPUR - July 6, 2011

<http://www.culvahouse.net/useful-theory/>

# FOUGERON ARCHITECTURE





# Dolf Schnebli

December 27, 1928 – September 12, 2009  
Founder of SAM Architekten

## Zimmerman Residence SAM Architekten





# Piazza d'Italia

Charles Moore and Perez Architects

# Parkview Terraces

Fougeron Architecture





Jackson Family Retreat  
Fougeron Architecture



Andrew Dunbar



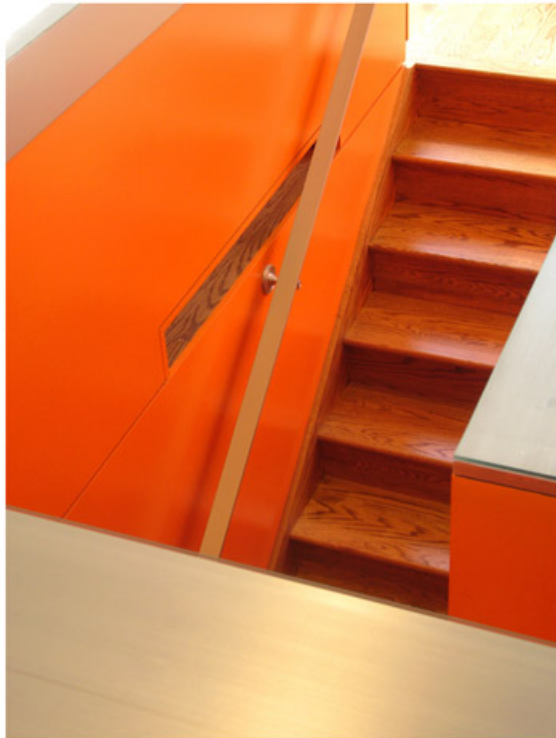






















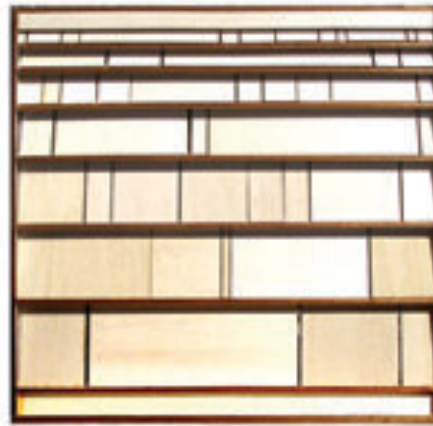




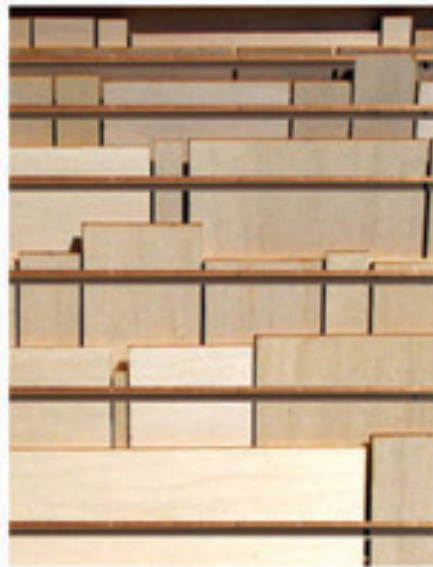
ORIGINAL  
USAGE



SALVAGED  
GLASS UNITS

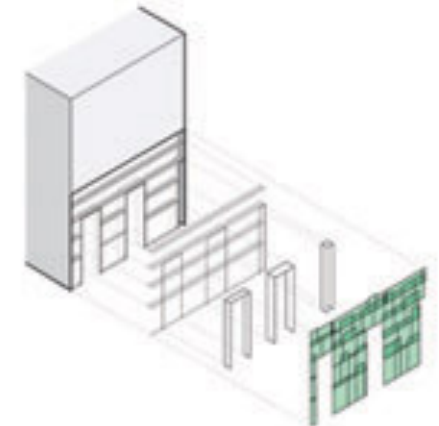
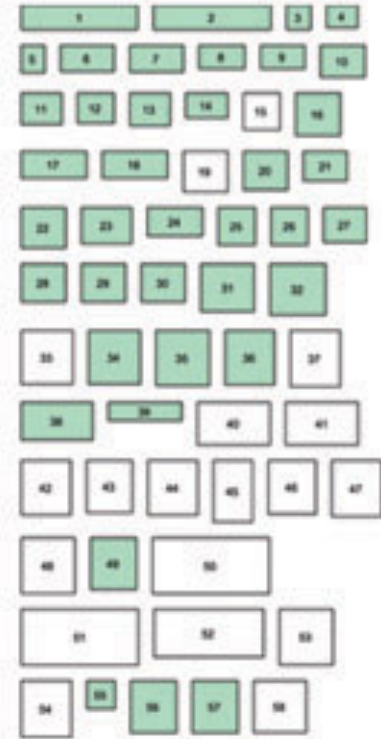


PHYSICAL MODEL, FRONT

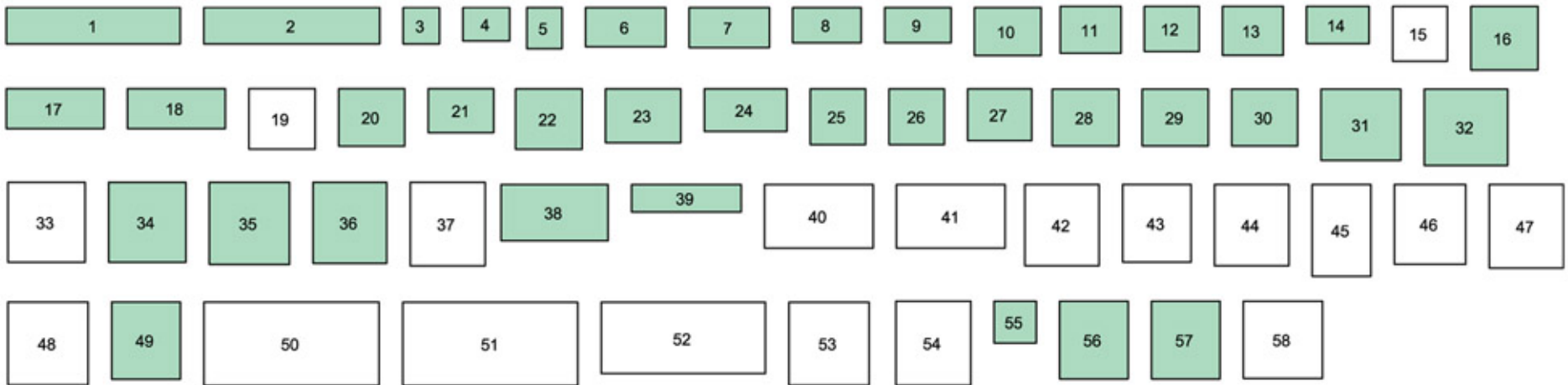


PHYSICAL MODEL, BACK

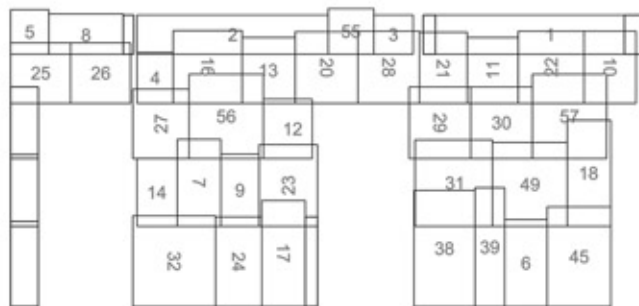
ASSEMBLY  
STUDIES



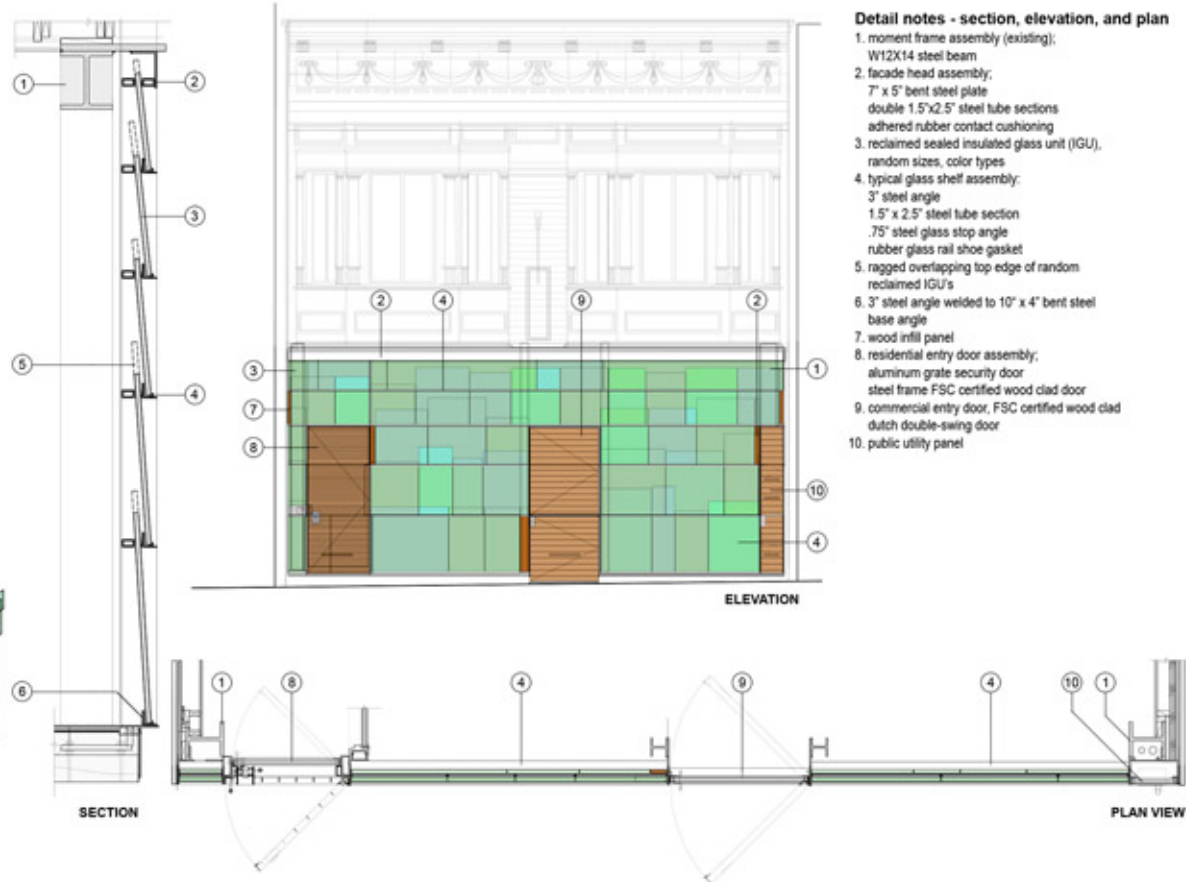
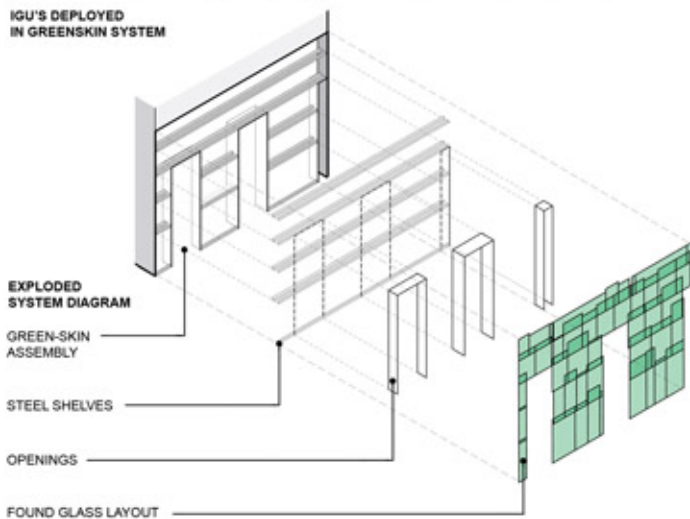
MATERIAL +  
SYSTEM



**RECLAIMED IGU INVENTORY**  
(SELECTED UNITS COLORED GREEN)



**IGU'S DEPLOYED IN GREENSKIN SYSTEM**



**Detail notes - section, elevation, and plan**

1. moment frame assembly (existing):  
W12X14 steel beam
2. facade head assembly:  
7' x 5' bent steel plate  
double 1.5"x2.5" steel tube sections  
adhered rubber contact cushioning
3. reclaimed sealed insulated glass unit (IGU),  
random sizes, color types
4. typical glass shelf assembly:  
3" steel angle  
1.5" x 2.5" steel tube section  
.75" steel glass stop angle  
rubber glass rail shoe gasket
5. ragged overlapping top edge of random  
reclaimed IGU's
6. 3" steel angle welded to 10" x 4" bent steel  
base angle
7. wood infill panel
8. residential entry door assembly:  
aluminum grate security door  
steel frame FSC certified wood clad door
9. commercial entry door, FSC certified wood clad  
dutch double-swing door
10. public utility panel









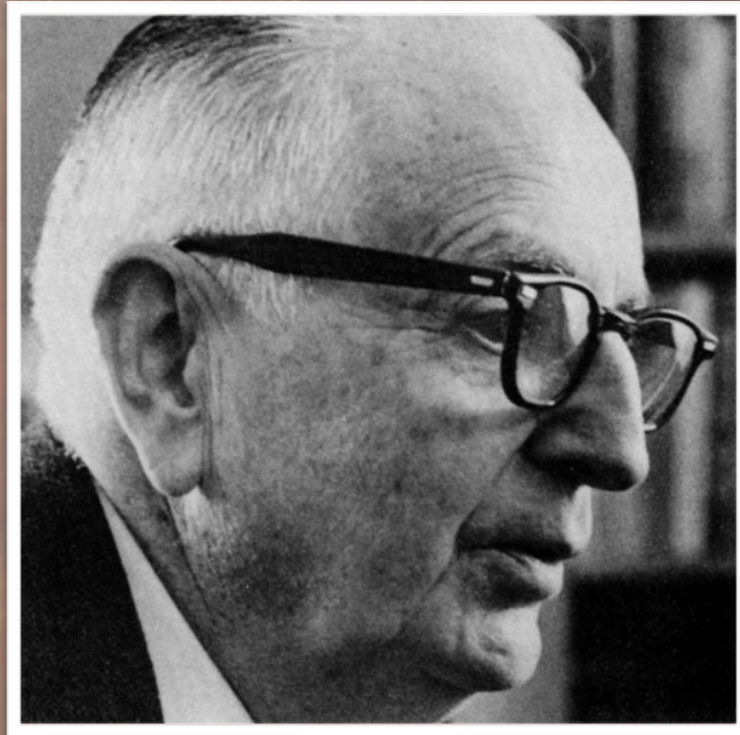


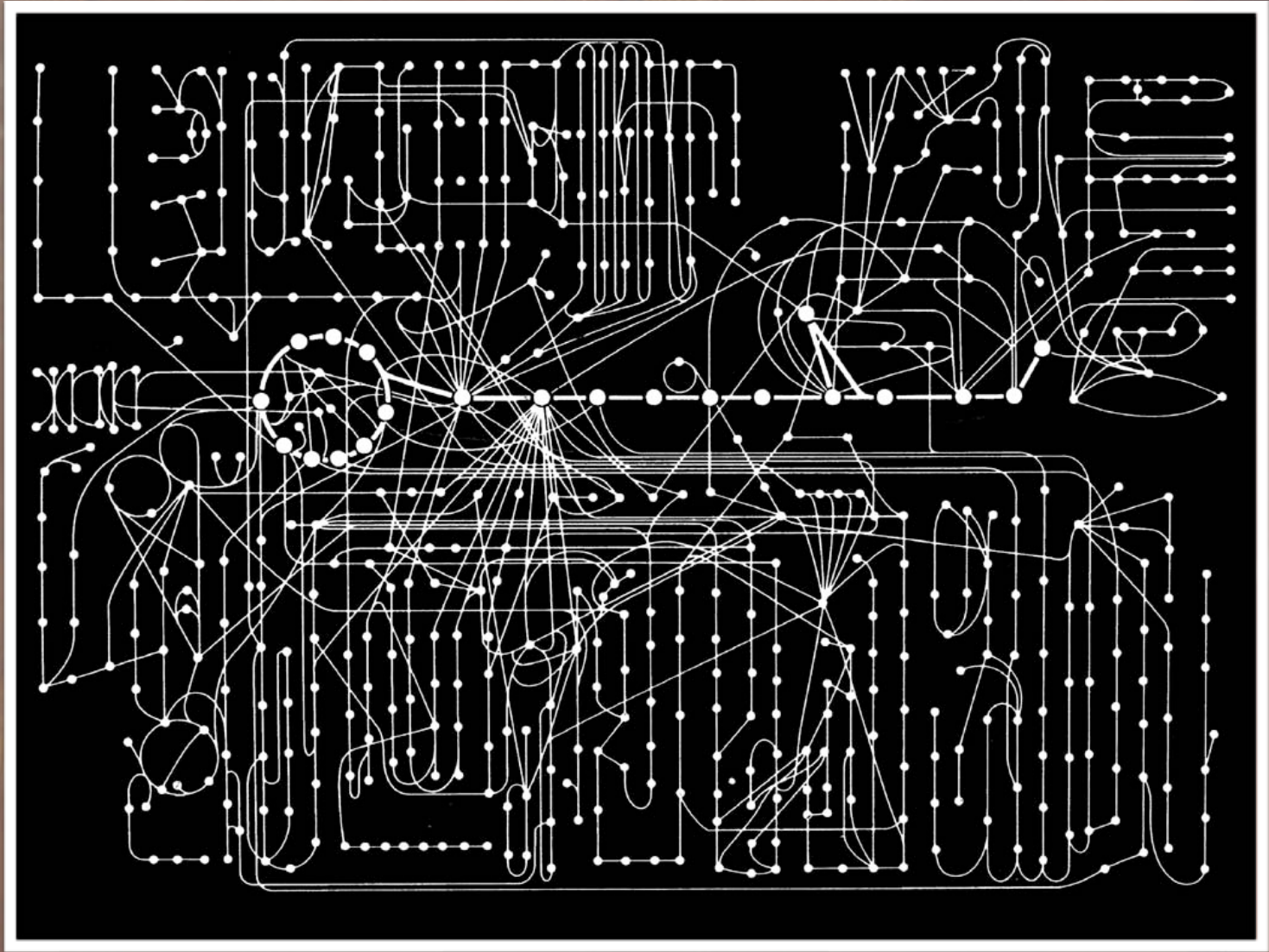


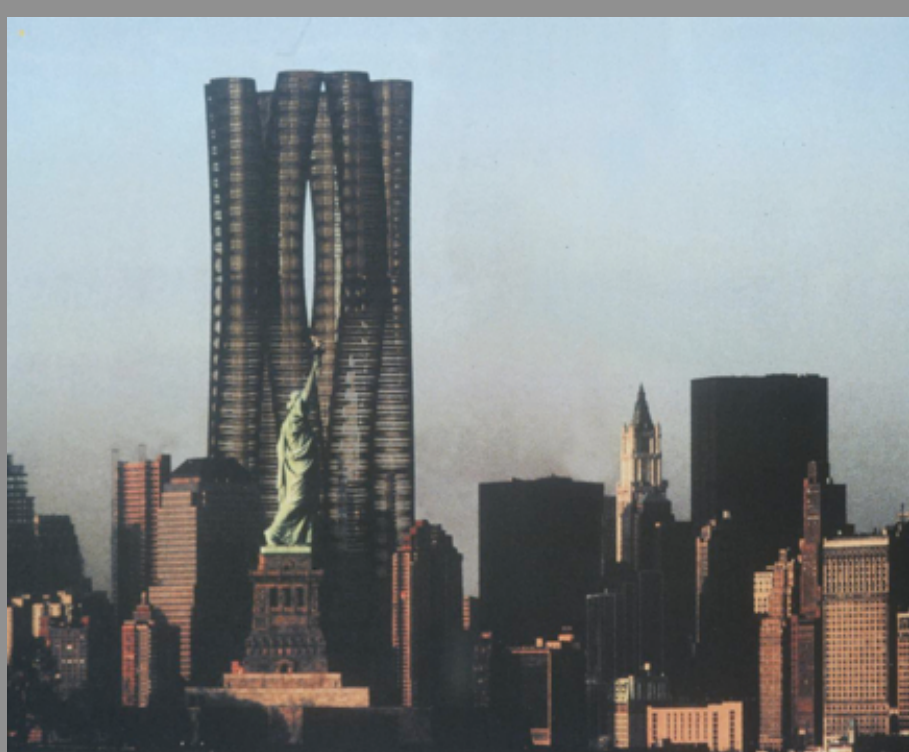
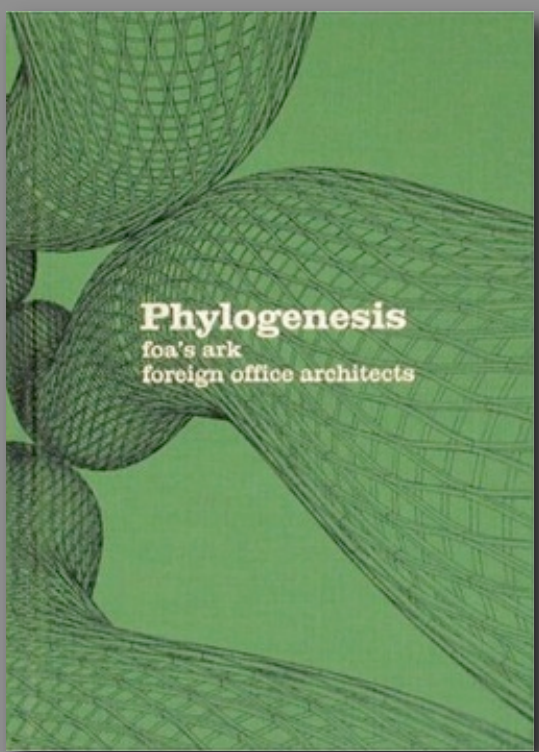
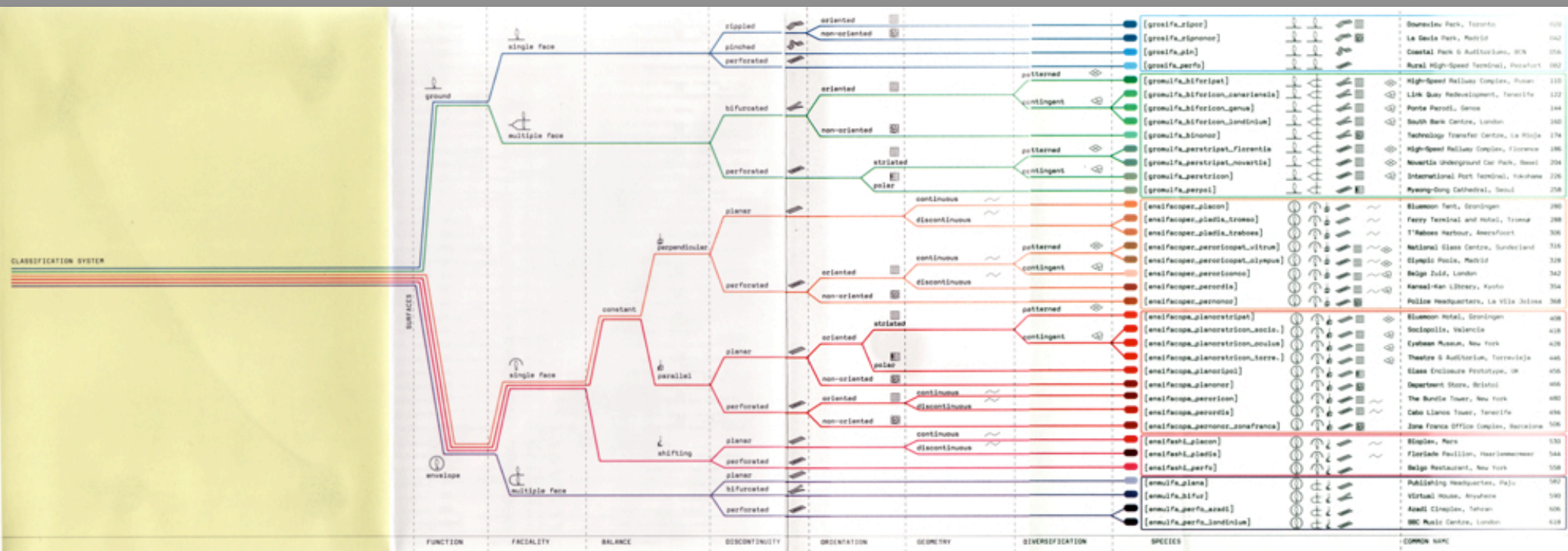
THE DEATH  
AND LIFE  
OF GREAT  
AMERICAN  
CITIES

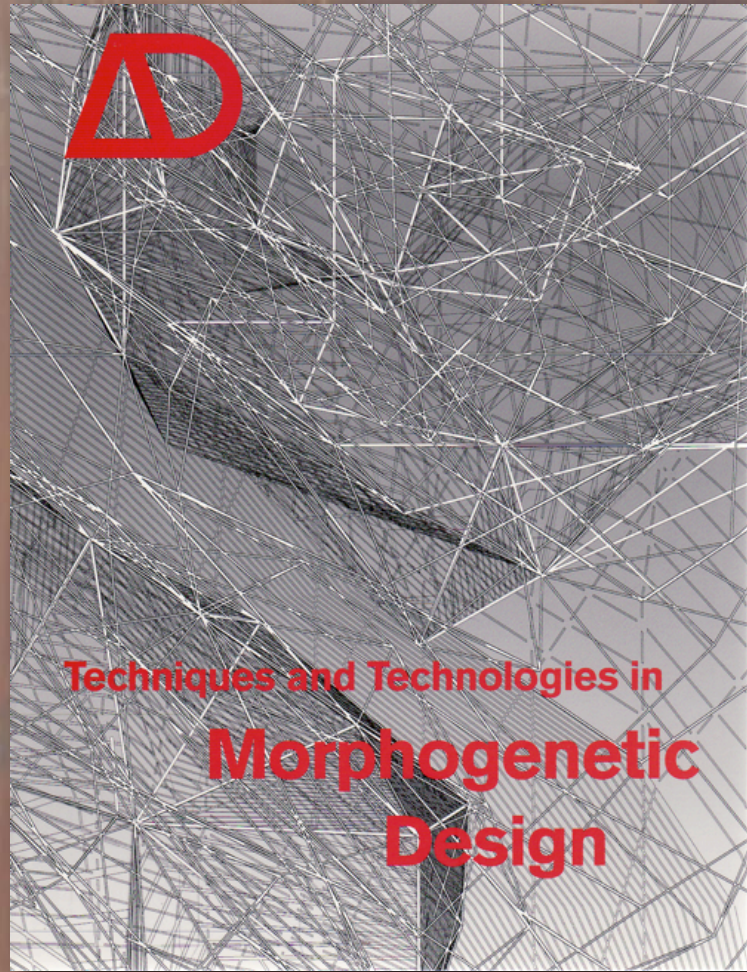
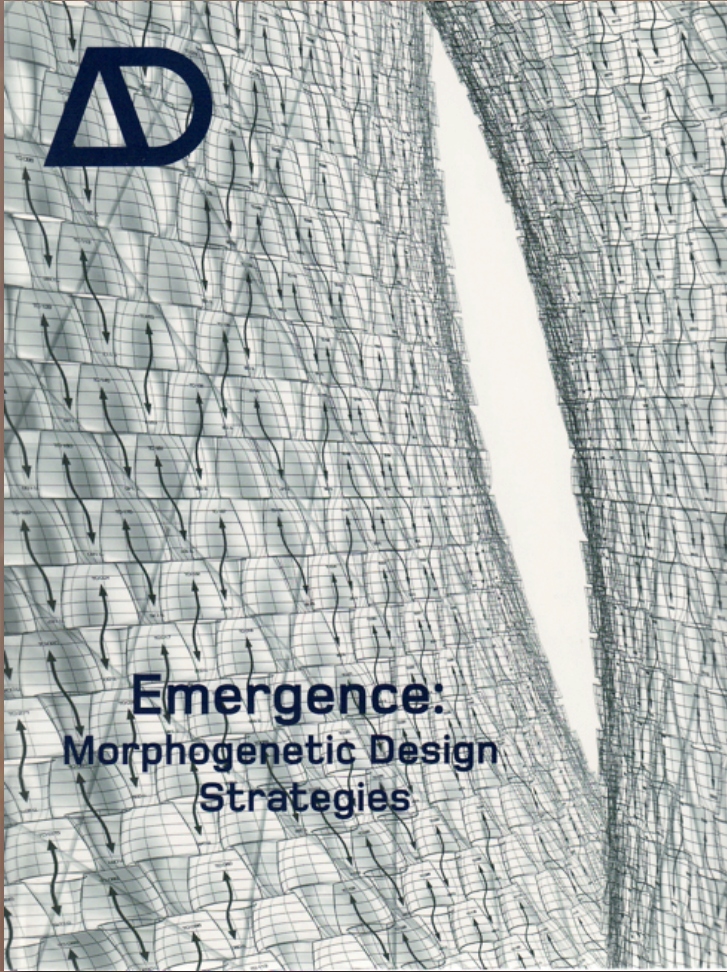
JANE JACOBS

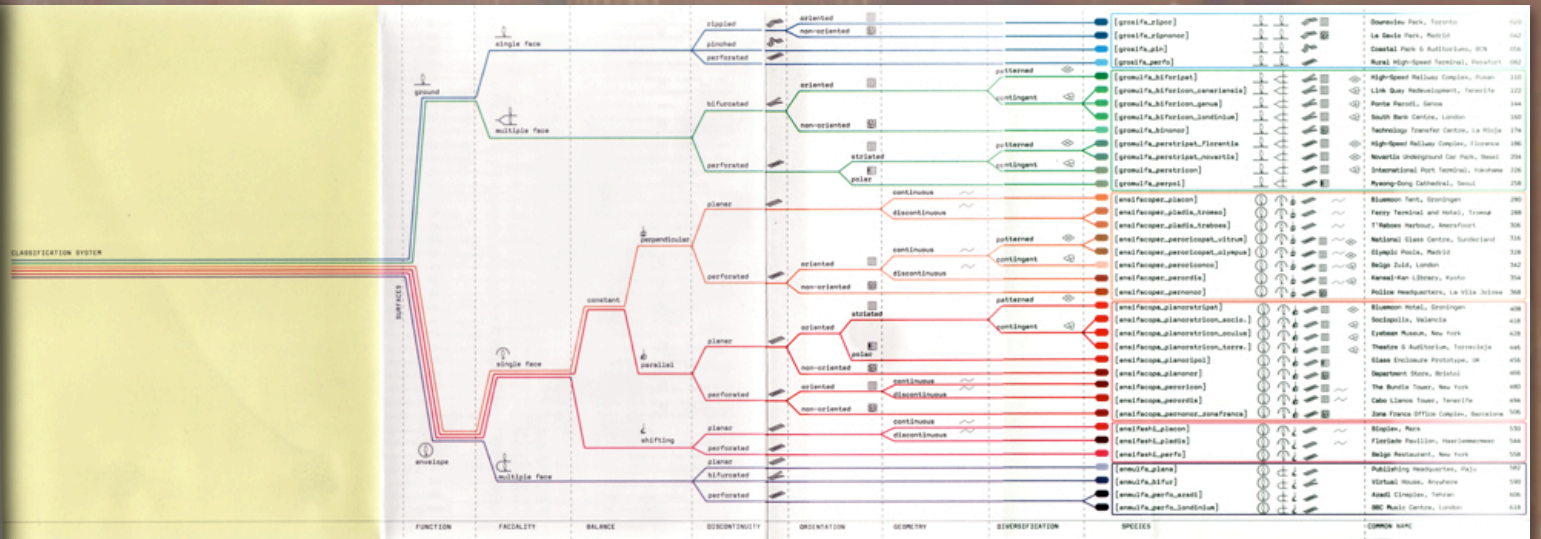
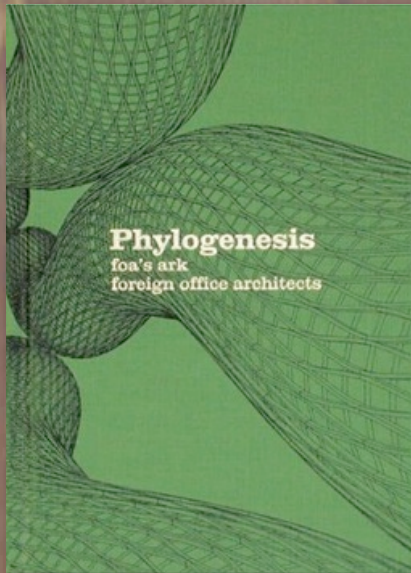




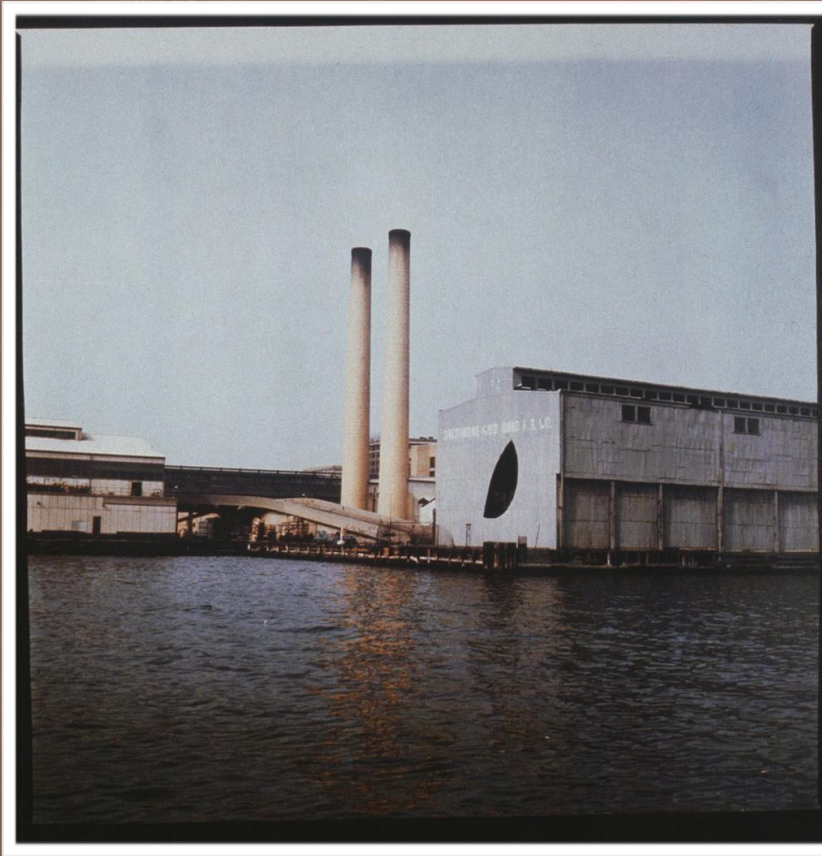












Gordon Matta-Clark Day's End, N.Y. 1976



Gordon Matta-Clark Office Baroque Antwerp 1977



gordon matta-clark, splitting, 1974



Gordon Matta Clark: Window Blow Out for Institute for Architecture and Urban Studies, N.Y. 1976

**LOCAL CODE : REAL ESTATES**

**WPA 2.0 PROPOSAL  
NICHOLAS de MONCHAUX**

# LOCAL

AT THE SPUR URBAN CENTER GALLERY  
SHOWING MARCH 15, 2011 — APRIL 20, 2011  
[spur.org/exhibits](http://spur.org/exhibits)

# REAL ESTATES

# CODE

Digital techniques transform  
abandoned public land into  
a new urban ecology



ALEMANY BLVD Bernal Heights South

ALEMANY BLVD Oceanview

ALPHA ST Visitacion Valley

S



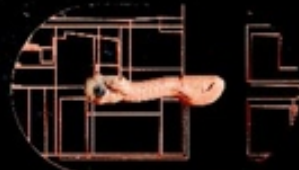
CONGO ST Sunnyside

DAWSON PL Nob Hill

DE LONG ST Outer Mission

ANGLO ALY Inner Parkside

ANGLO AL



Heights

RALSTON ST Ingleside Heights

RAMSELL ST Ingleside Heights

RANKIN ST Bayview District

RAMSELL ST Ingleside Heights

RANKIN ST



SHAFTER AVE Bayview District

SHAFTER AVE (2) Bayview District

SHAFTER AVE (3) Bayview District

SHIELDS ST Ingleside Heights

SHOTWELL ST Ber



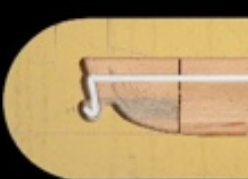
UNNAMED 108 Clarendon Heights

UNNAMED 186 Bernal Heights North

VAN NESS AVE Van Ness - Civic Center

VAN NESS AVE (2) Van Ness - Civic Center

RINCON ST Sou



SPOFFORD LN Financial District North

STANLEY ST Ingleside Heights

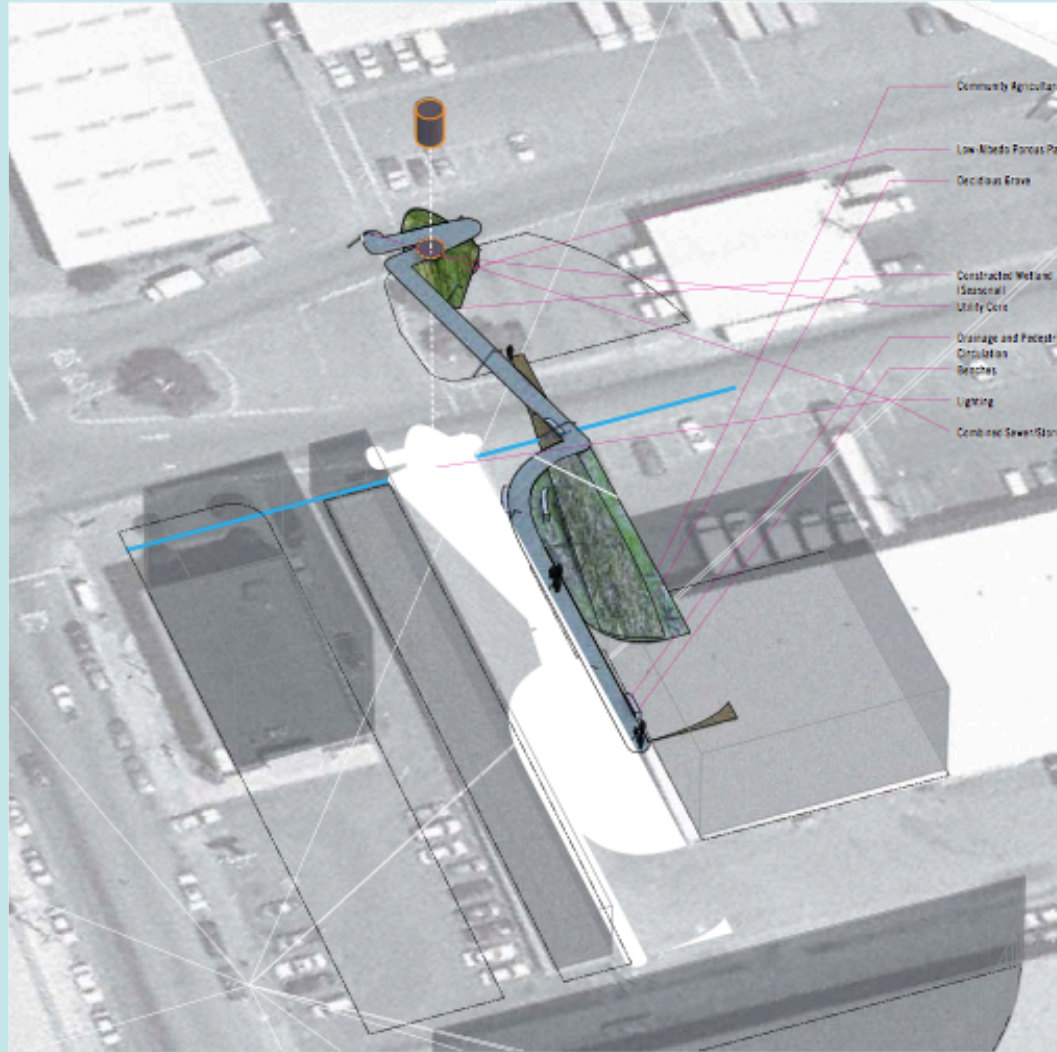
SOMERSET ST Visitacion Valley

MORAGA ST Golden Gate



Local Code, SPUR San Francisco, Spring 2011

# 9035000 MILTON | ROSS ST BAYVIEW DISTRICT



- Community Agriculture
- Low Albedo Porous Paving
- Deciduous Grove
- Constructed Wetland (Seasonal) Utility Core
- Drainage and Pedestrian Circulation Benches
- Lighting
- Combined Sewer/Stormwater Line

Community Agriculture	195
Low Albedo Porous Paving	26
Deciduous Grove	110
Constructed Wetland (Seasonal)	37
Utility Core	5
Drainage and Pedestrian Circulation	163
<b>Total Proposed Interventions</b>	<b>384</b>

Proposed Optimized Surface Areas (ft<sup>2</sup>)



Location



San Francisco Redevelopment Agency	\$15,937.44
Infra Infrastructure Grants	\$5,298.00
FFA Brownfield Redevelopment Grant	\$175.00
Caltrans Environmental Mitigation Funds	\$8,820.00
SF Agency Mitigation Funds	\$1,890.00
PUC Stormwater Initiatives	\$93,474
<b>Total redirected spending</b>	<b>\$127,786.44</b>

Proposed Funding Diversion







