

PORT CITY

The History and Transformation of the Port of San Francisco, 1848–2010



MICHAEL R. CORBETT

San Francisco in 1847 - Sept from the hill back.

Sept



Reproduced with permission of The Huntington Library, San Marino, California



California Historical Society



BIRD'S EYE VIEW OF SAN FRANCISCO
From San Mateo Head & North July 1842.

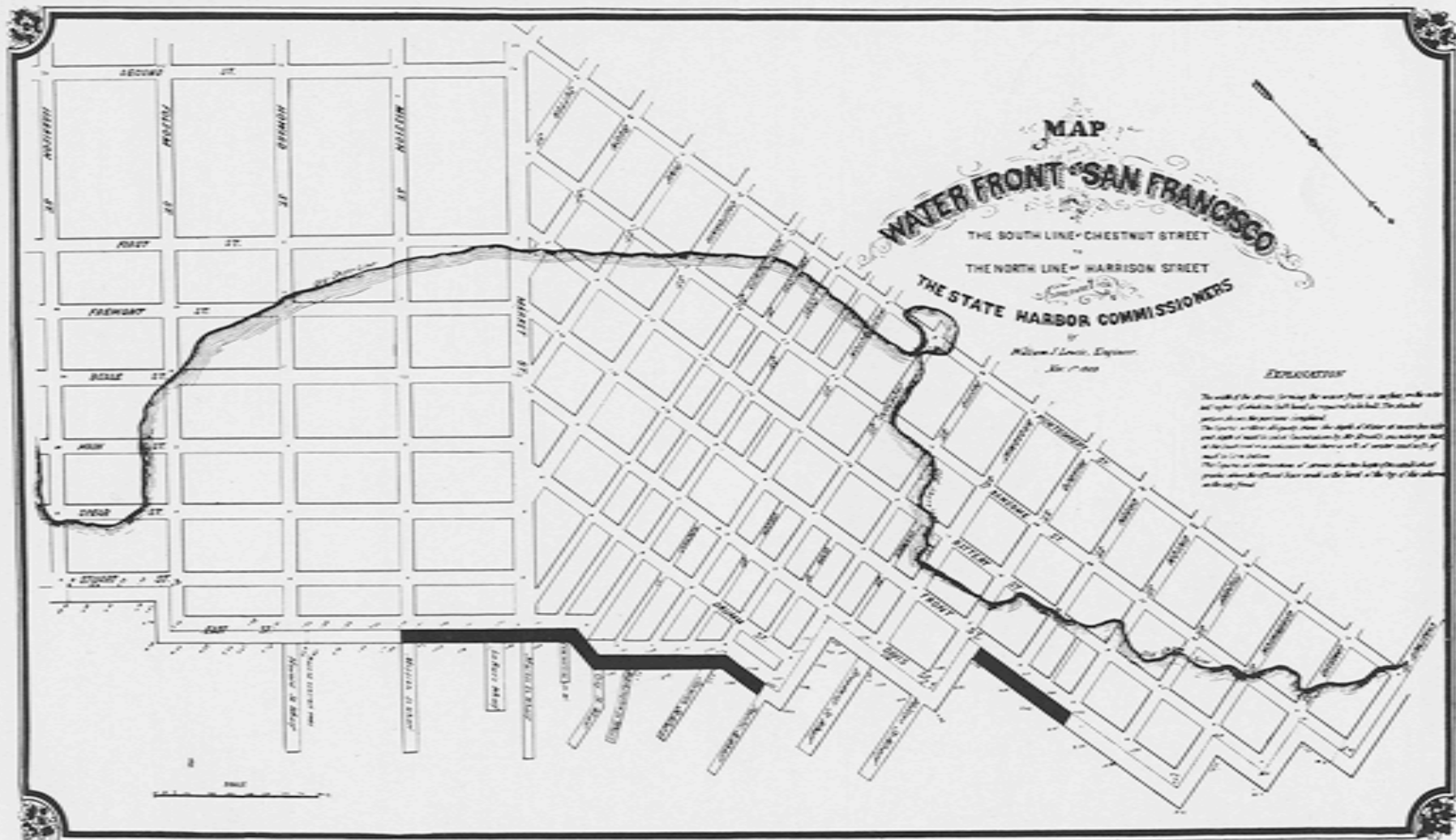
Courtesy of the California History Room, California State Library, Sacramento, California



The Society of California Pioneers



Courtesy of the
California History
Room, California State
Library, Sacramento,
California



Map from the first survey made for the new State Harbor Commissioners. The waterfront has been built out a long way from the shoreline of 20 years earlier, but compare with the waterfront map of today at the back of this report

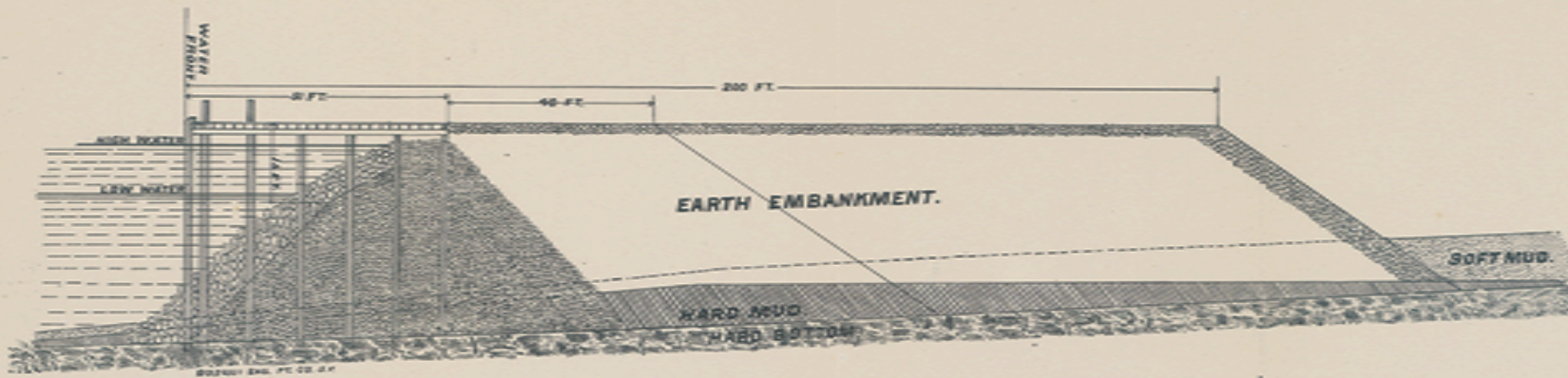
Courtesy Port of San Francisco



Courtesy Bancroft Library. University of California, Berkeley



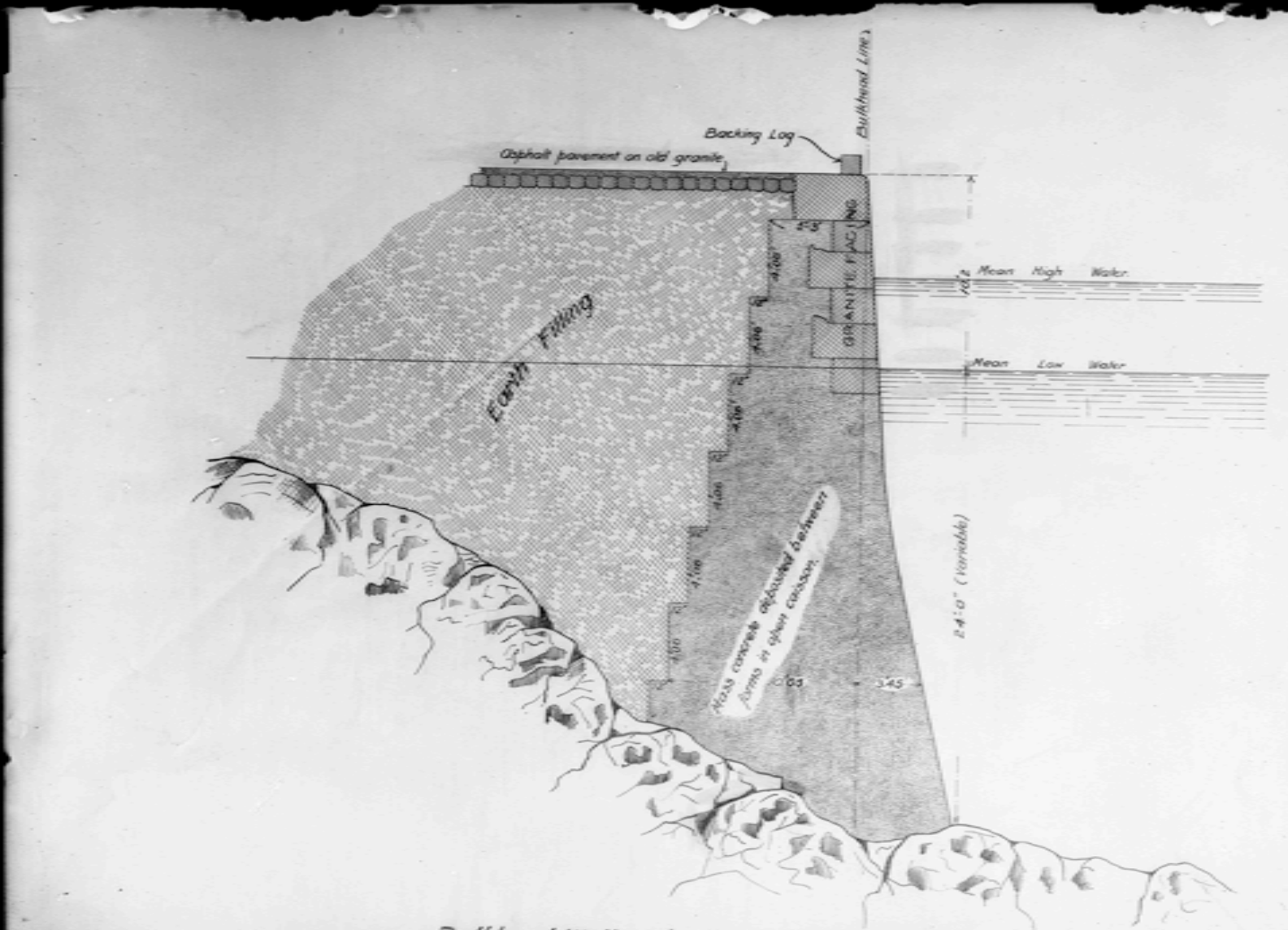
Courtesy Bancroft Library. University of California, Berkeley



TRANSVERSE SECTION of SEA WALL and THOROUGHFARE.

SCALE 20 FT. = 1 INCH.

Courtesy Port of San Francisco



Bulkhead Wall as built at E. 116th St. Section.

70



Collection of the New-York Historical Society



Courtesy Port of San Francisco



1802-23 FM

Courtesy
Port of San
Francisco



Courtesy Port of San Francisco



Courtesy Port of San Francisco



NO. 10.

EAST STREET, SHOWING BELT LINE R.R. AND SHIPPING. MAY 11, 1905.

TUNNICLIFFE & HULLER, DET. PHOTOGRAPHERS.
THE CALIFORNIA PROMOTION COMMITTEE

Courtesy San Francisco Maritime NHP



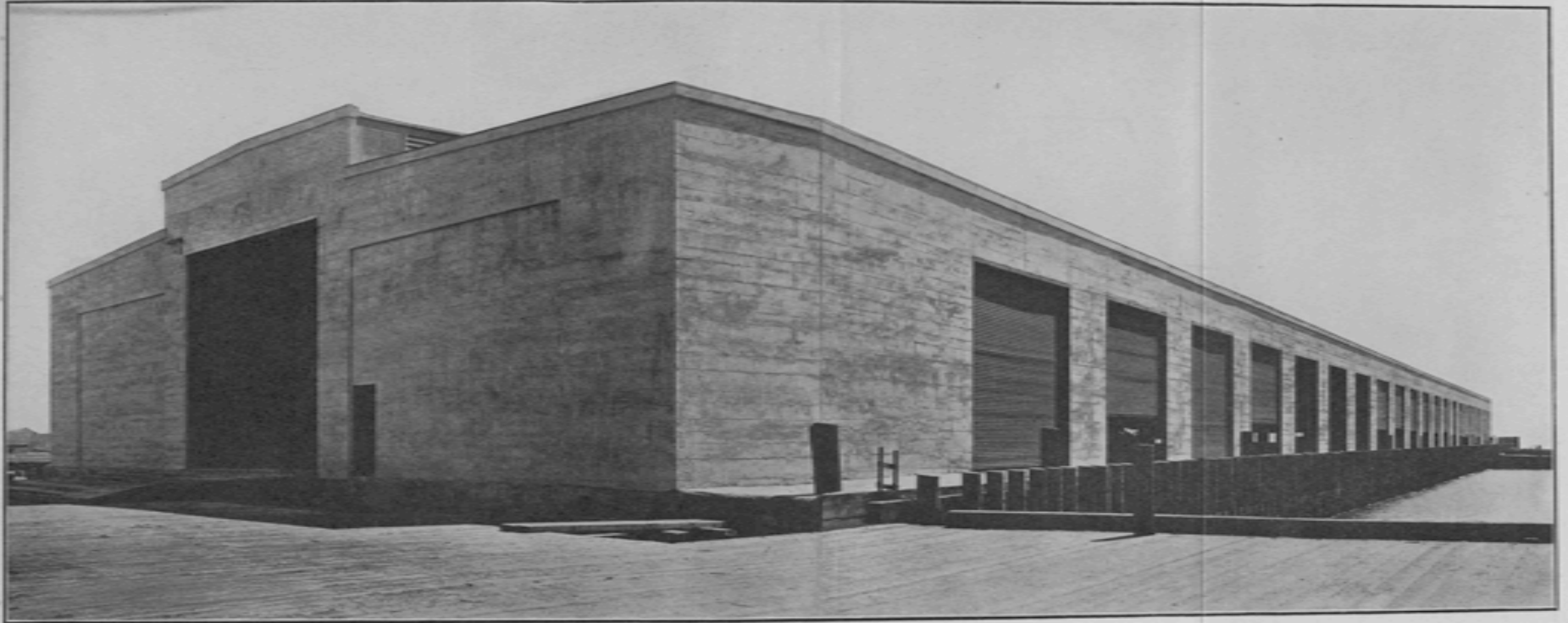
Courtesy Port of San Francisco



Courtesy Port of San Francisco



San Francisco
History Center,
San Francisco
Public Library



PIER 41 SHOWING TYPE OF REINFORCED CONCRETE SHEET.

Courtesy Port of San Francisco



Interior of steel shed on new pier No. 36.

Courtesy Port of San Francisco

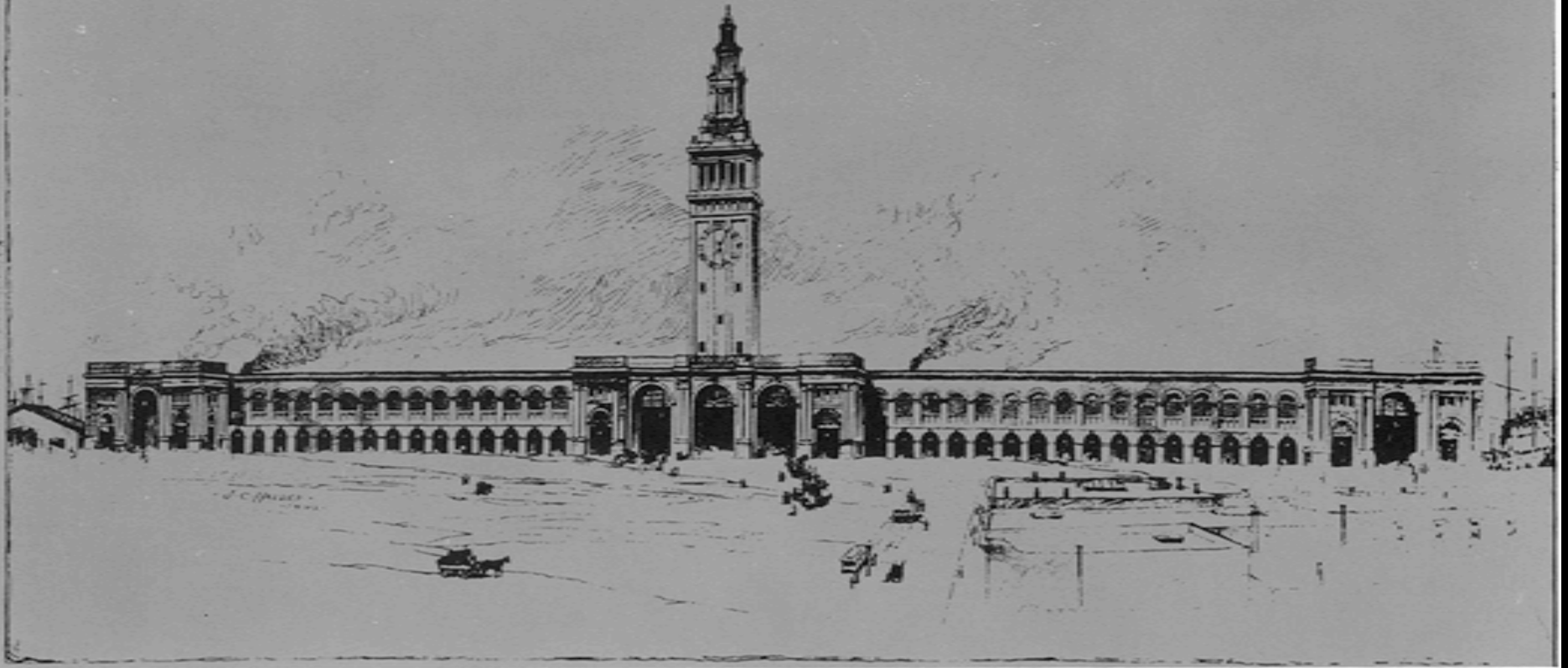


Courtesy Port of San Francisco

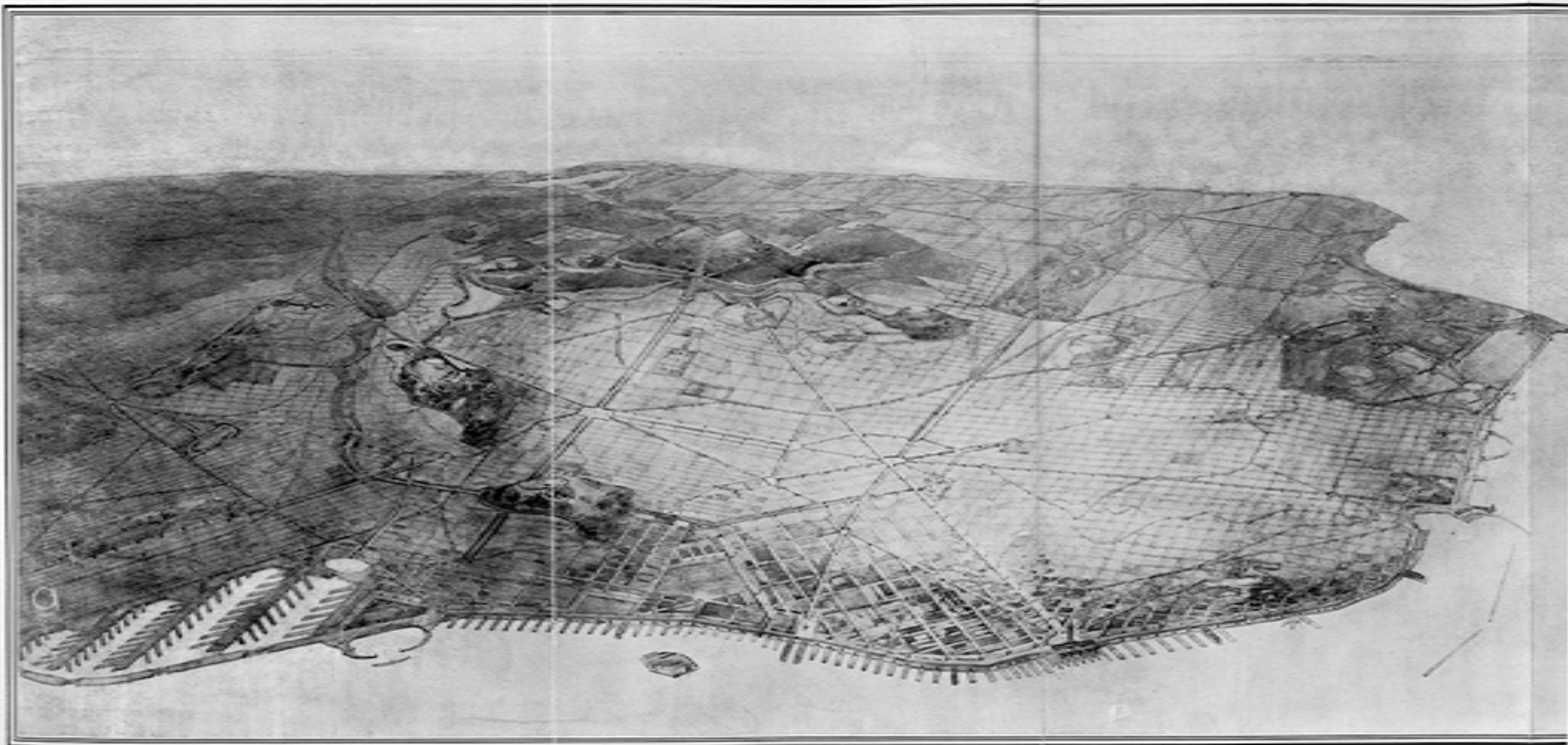


Courtesy Port of San Francisco

UNION DEPOT AND FERRY HOUSE
SAN FRANCISCO CALIFORNIA
A PAGE BROWN ARCHITECT S F

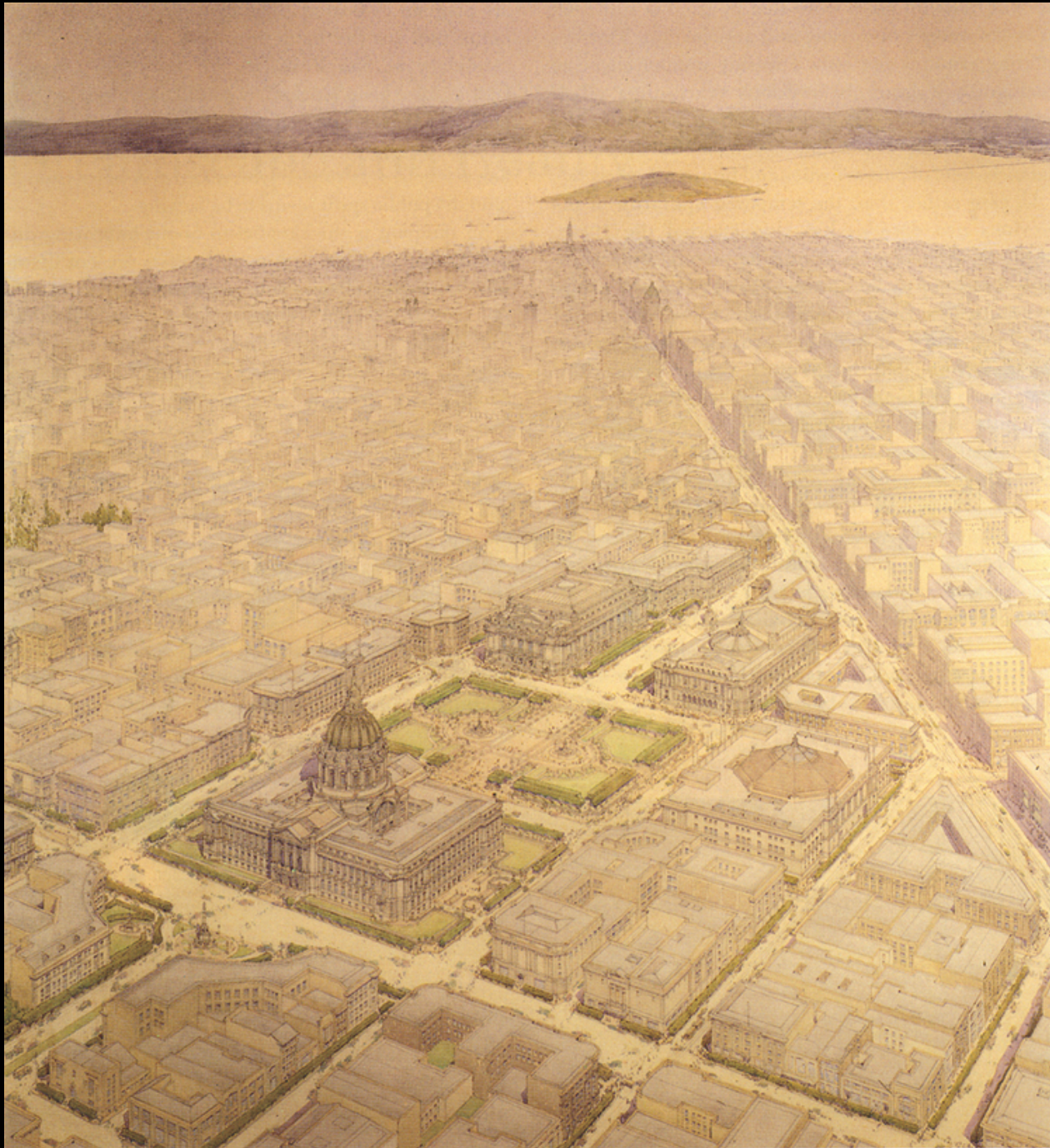


Courtesy Port of San Francisco

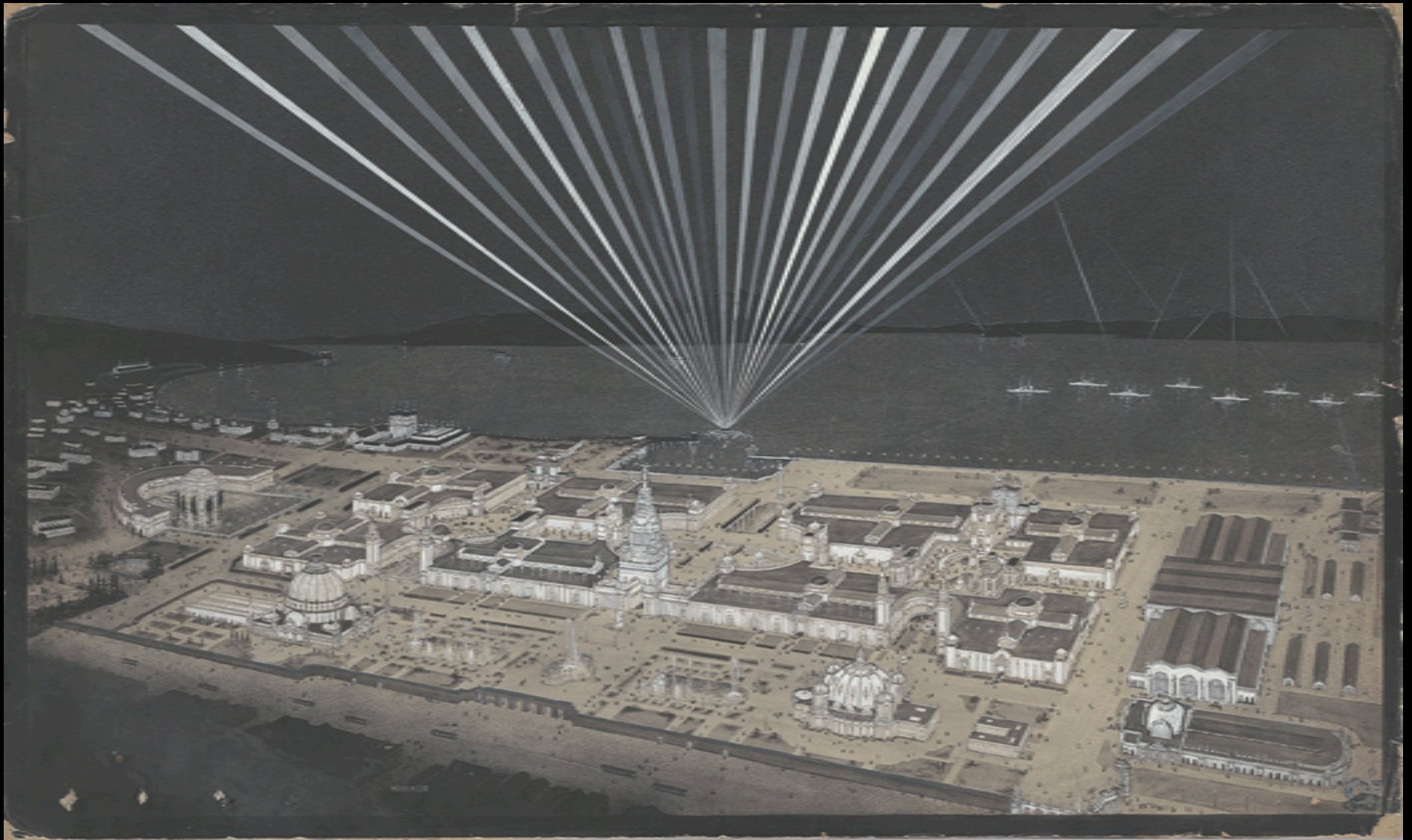


BIRD'S-EYE PERSPECTIVE OF THE CITY FROM THE EAST, SHOWING THE PROPOSED CHANGES

San Francisco History Center, San Francisco Public Library



San Francisco History
Center, San Francisco
Public Library

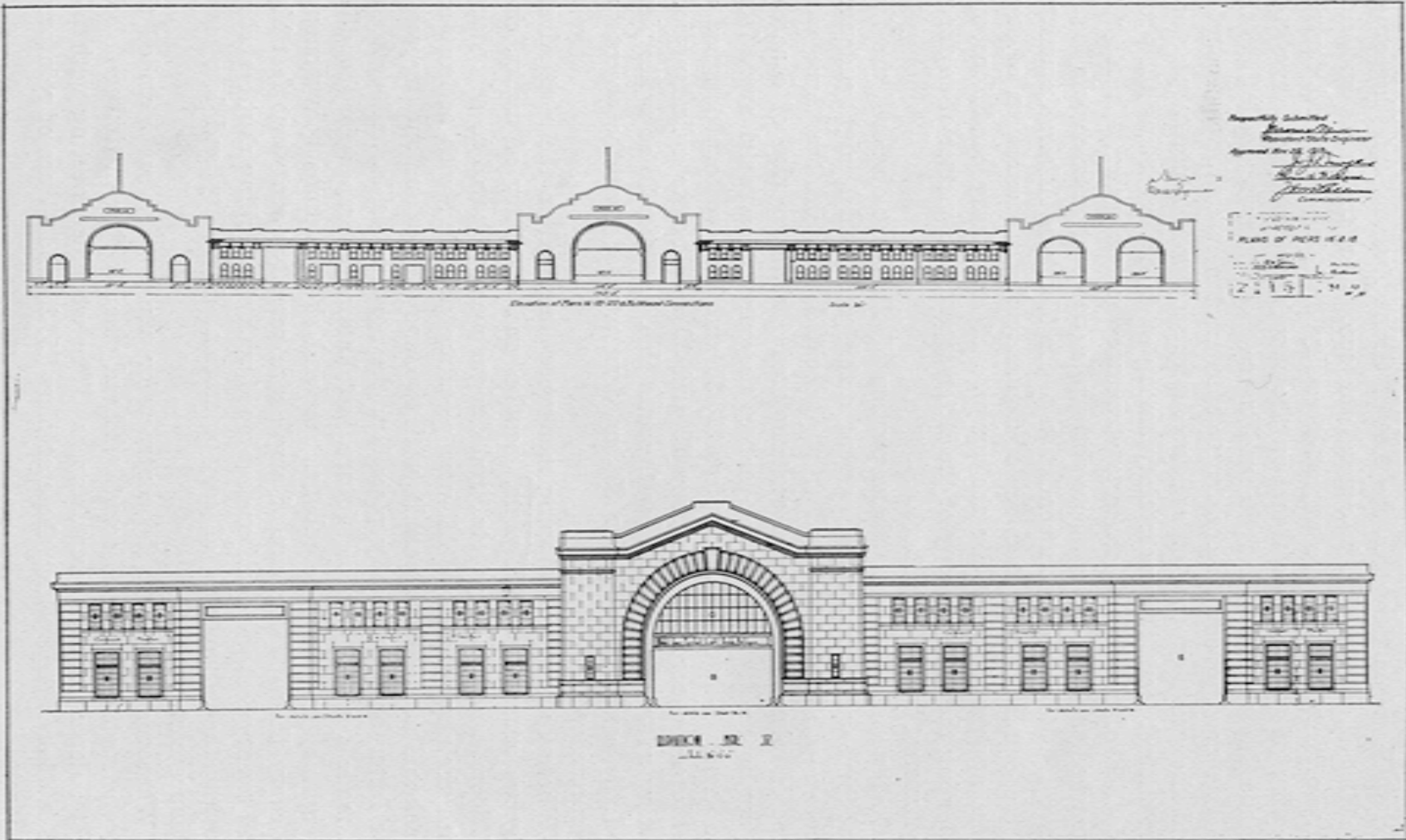


Courtesy Environmental Design Archives, University of California, Berkeley

8871



Courtesy NYC Municipal Archives



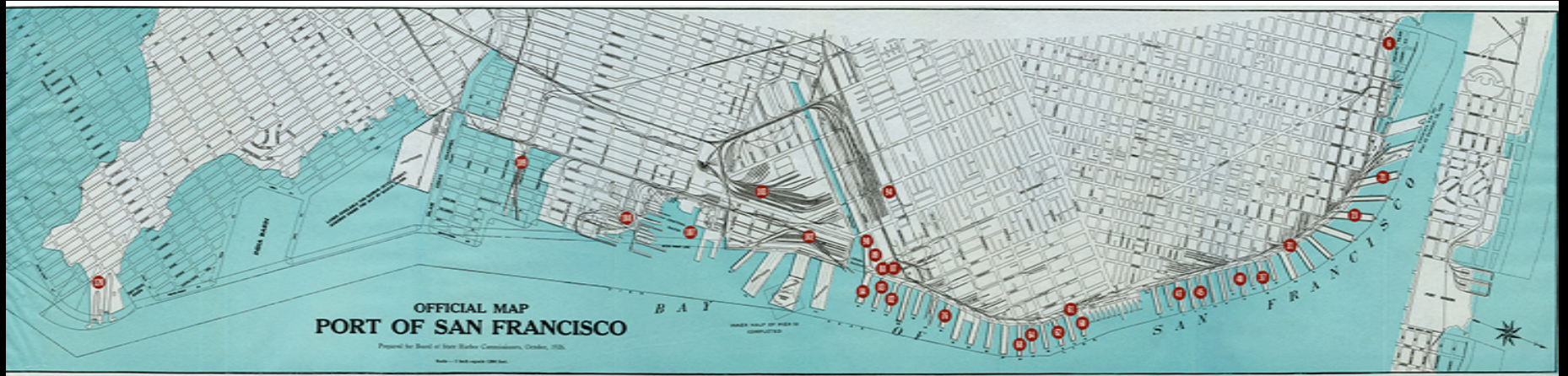
At Top—Front of Piers 16, 18, 20. Bottom—Front of Pier 37.



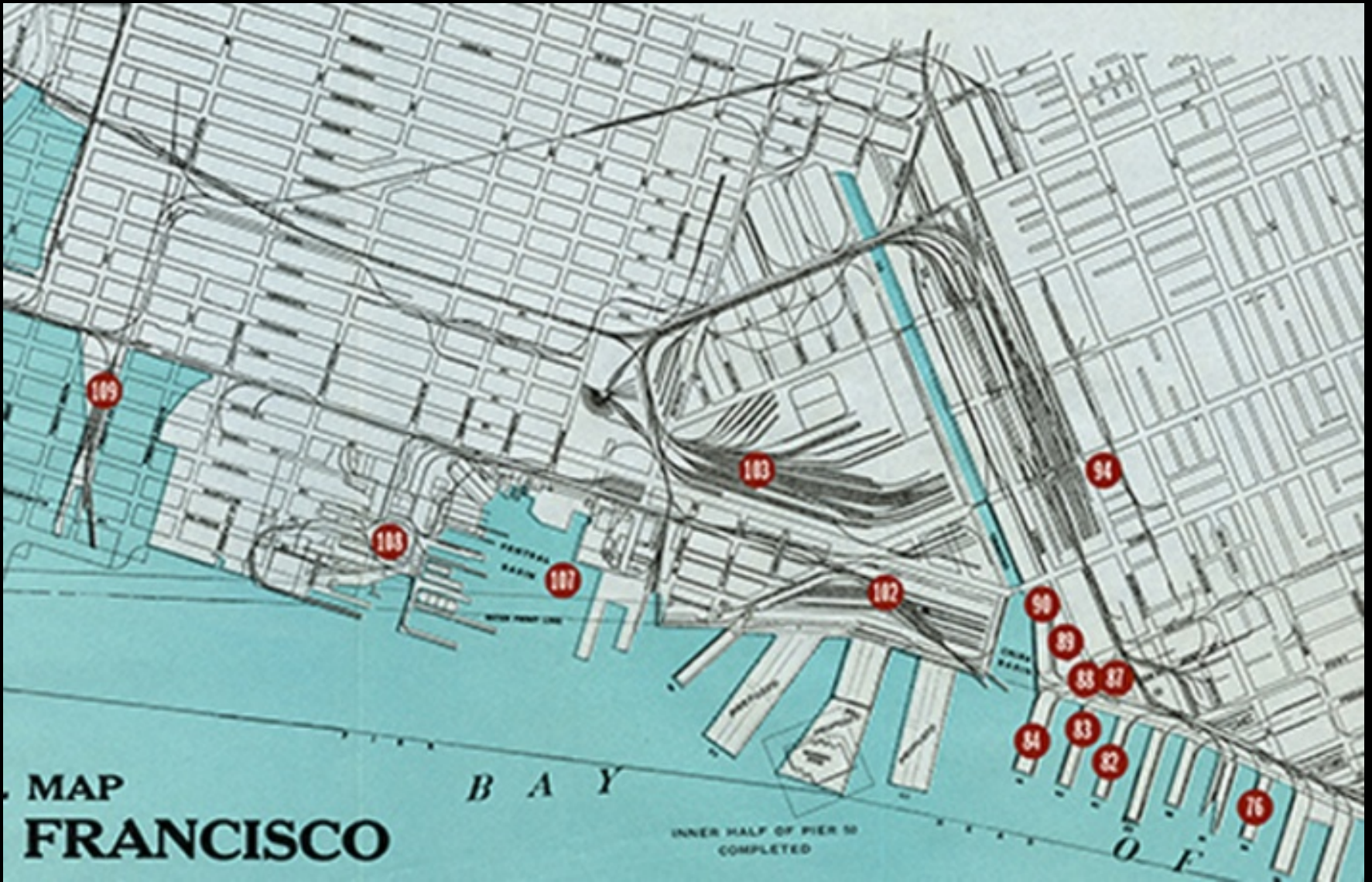
Courtesy Port of San Francisco



San Francisco
History Center,
San Francisco
Public Library



Courtesy Port of San Francisco



Courtesy Port of San Francisco



Produce Market
Source: San Francisco Public Library



China Basin Warehouse and SP yards north of Mission Creek Channel
Source: San Francisco Public Library



South End warehouse group
Source: Port of San Francisco



Western Pacific Freight Depot
Source: San Francisco Public Library



WILSON & KEY 599 Commercial St.

HARBOR WAREHOUSE CO.

KEARNY AND NORTH POINT STS. FRONTING ON NEW SEAWALL WHARF AND BELT RAILROAD

Harbor Warehouse Co.
Source: San Francisco Maritime National Historic Park



Trestle across Aquatic Cove to Fort Mason Tunnel
Source: San Francisco Public Library



View along Battery Street, looking south
Source: Estate of Pirkle Jones



View along California Street, looking east
Source: San Francisco Public Library



Alaska Commercial Building
Source: San Francisco Architectural Heritage



Southern Pacific Building
Source: The Architect & Engineer



Matson Building
Source: San Francisco Public Library



Santa Fe Building
Source: The Architect & Engineer



Sailors boarding houses
Source: San Francisco Maritime National Historic Park



Sailors' Union of the Pacific Union Hall
Source: San Francisco Public Library

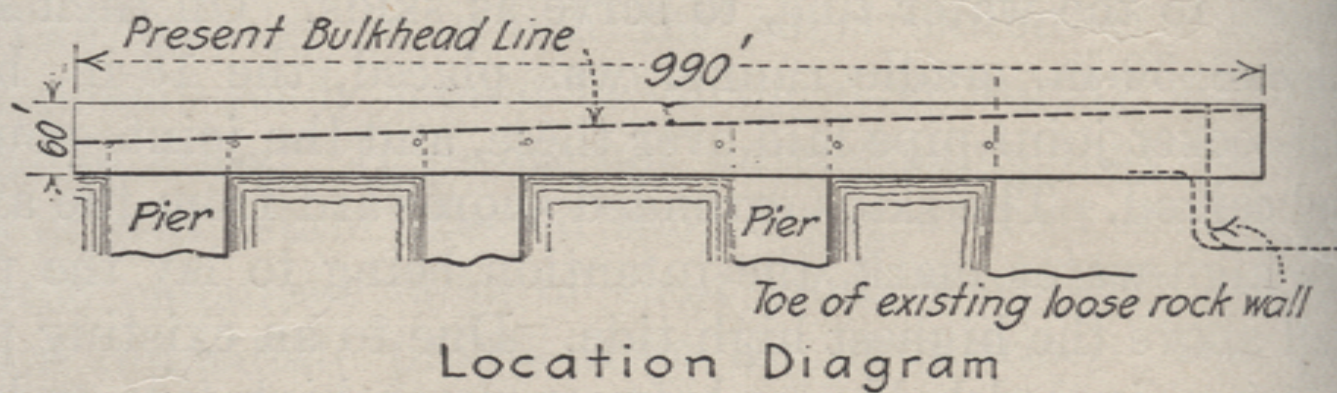
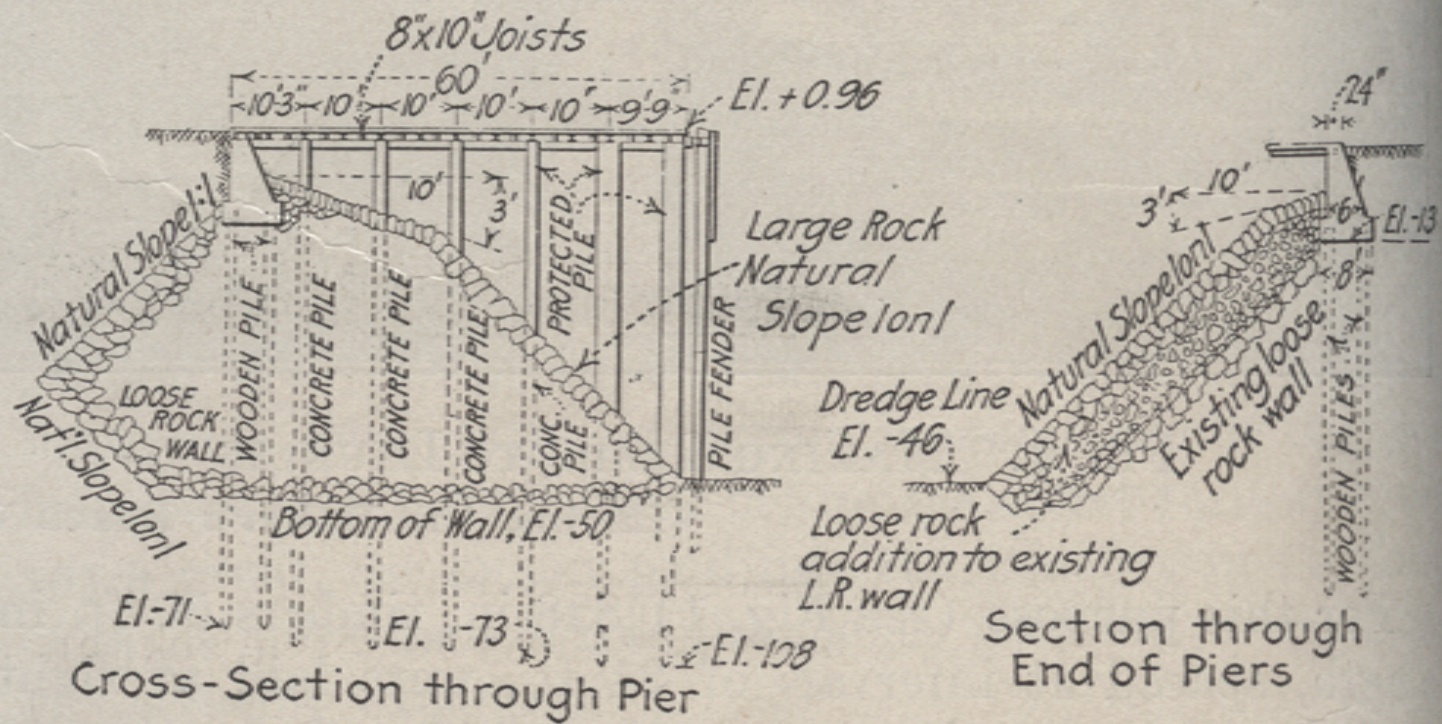


YMCA

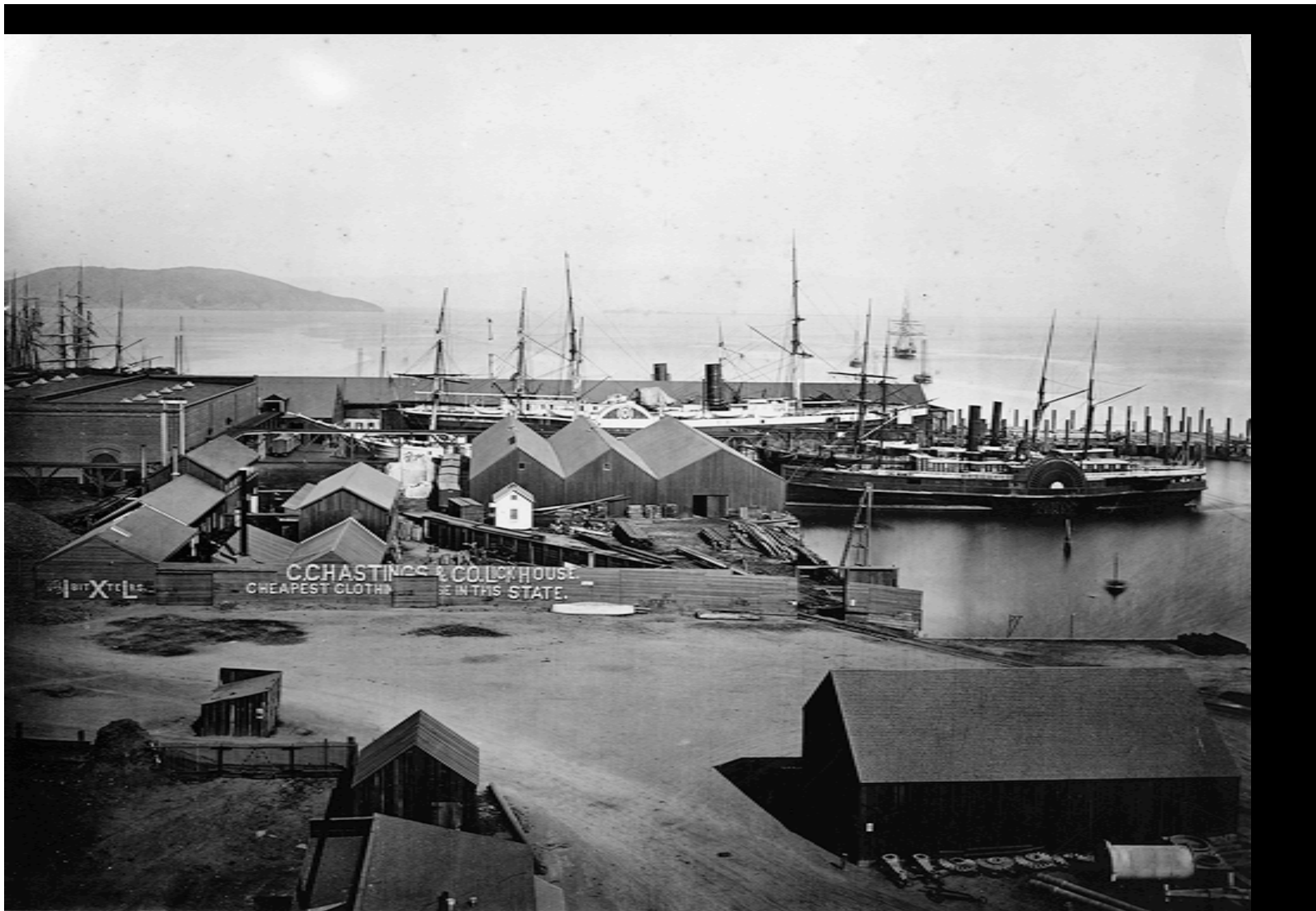
Source: San Francisco Public Library



Aerial View of San Francisco, looking up Market Street
Source: California Historical Society



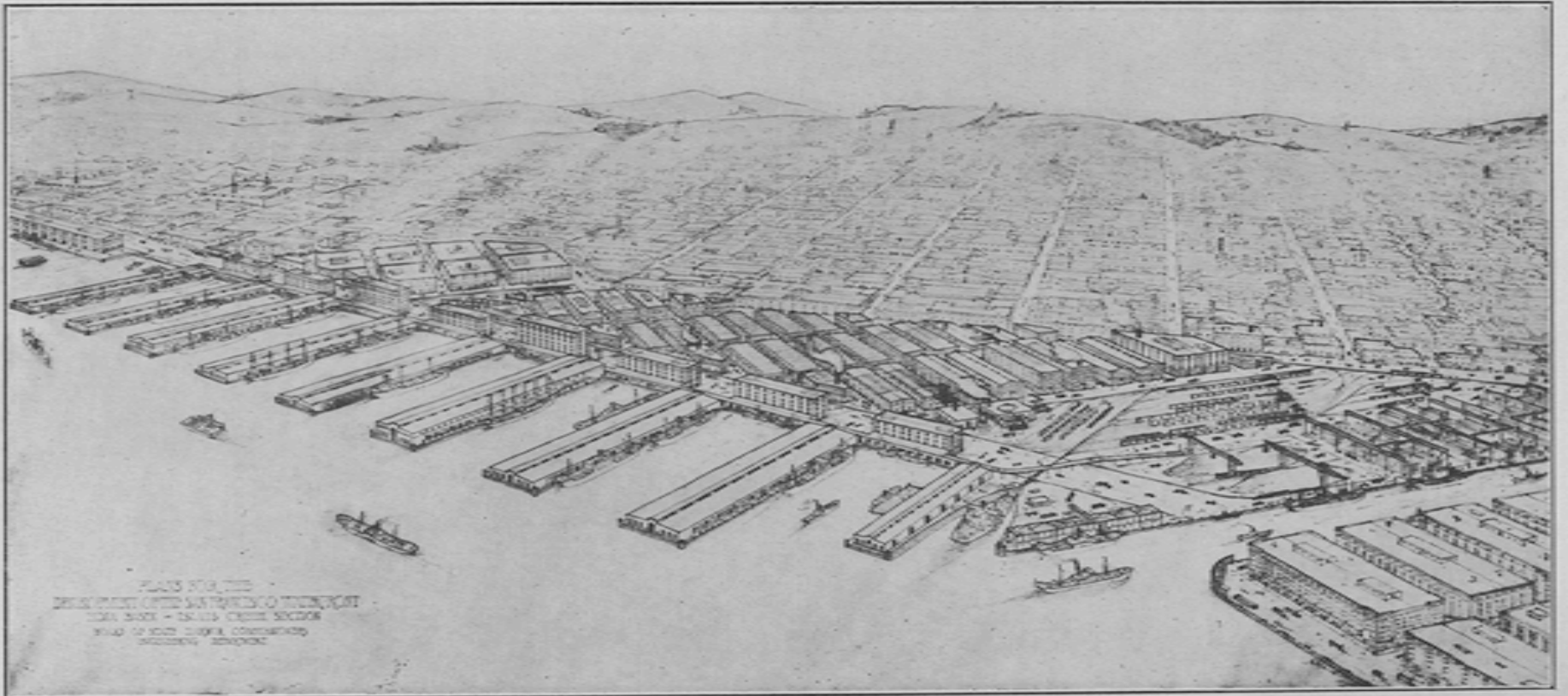
Courtesy Port of San Francisco



San Francisco History Center, San Francisco Public Library



Collection of the California State Lands Commission



Courtesy Port of San Francisco