



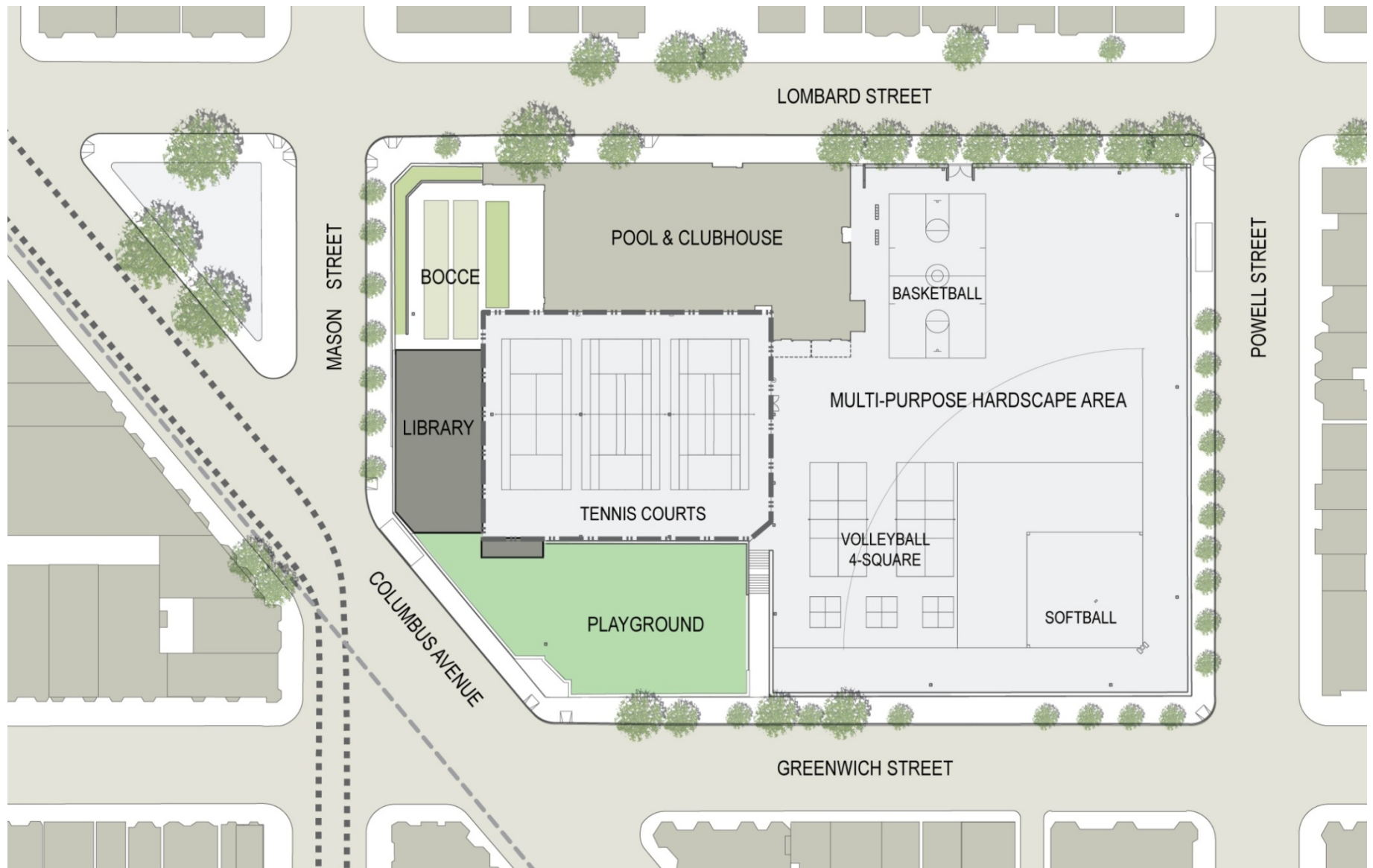
SPUR PROJECT REVIEW  
APRIL 6, 2011

New North Beach Branch Library & Renovated Joe DiMaggio Playground



**NORTH BEACH BRANCH PUBLIC LIBRARY**





**EXISTING SITE CONDITIONS**

**NORTH BEACH BRANCH PUBLIC LIBRARY**



**JOE DiMAGGIO PLAYGROUND AND NORTH BEACH PUBLIC LIBRARY MASTER PLAN**

**NORTH BEACH BRANCH PUBLIC LIBRARY**

1

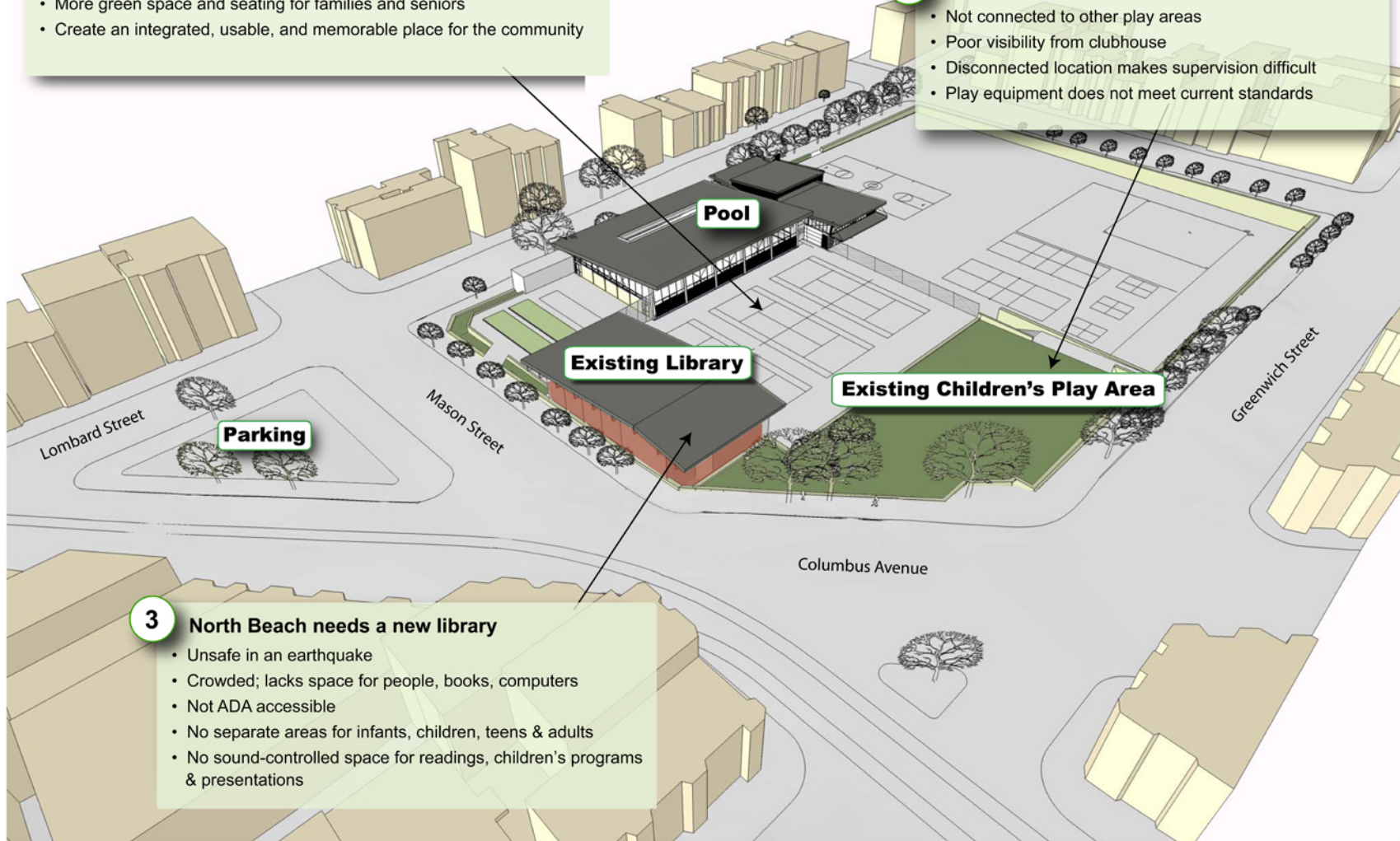
**Community- requested playground improvements**

- Improved location for children's play area
- More green space and seating for families and seniors
- Create an integrated, usable, and memorable place for the community

2

**The current children's play area's challenges:**

- Not connected to other play areas
- Poor visibility from clubhouse
- Disconnected location makes supervision difficult
- Play equipment does not meet current standards



3

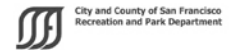
**North Beach needs a new library**

- Unsafe in an earthquake
- Crowded; lacks space for people, books, computers
- Not ADA accessible
- No separate areas for infants, children, teens & adults
- No sound-controlled space for readings, children's programs & presentations

Bird's Eye View provided by Leddy Maytum Stacy Architects and the City and County of San Francisco Recreation and Park Department

**Current Site**

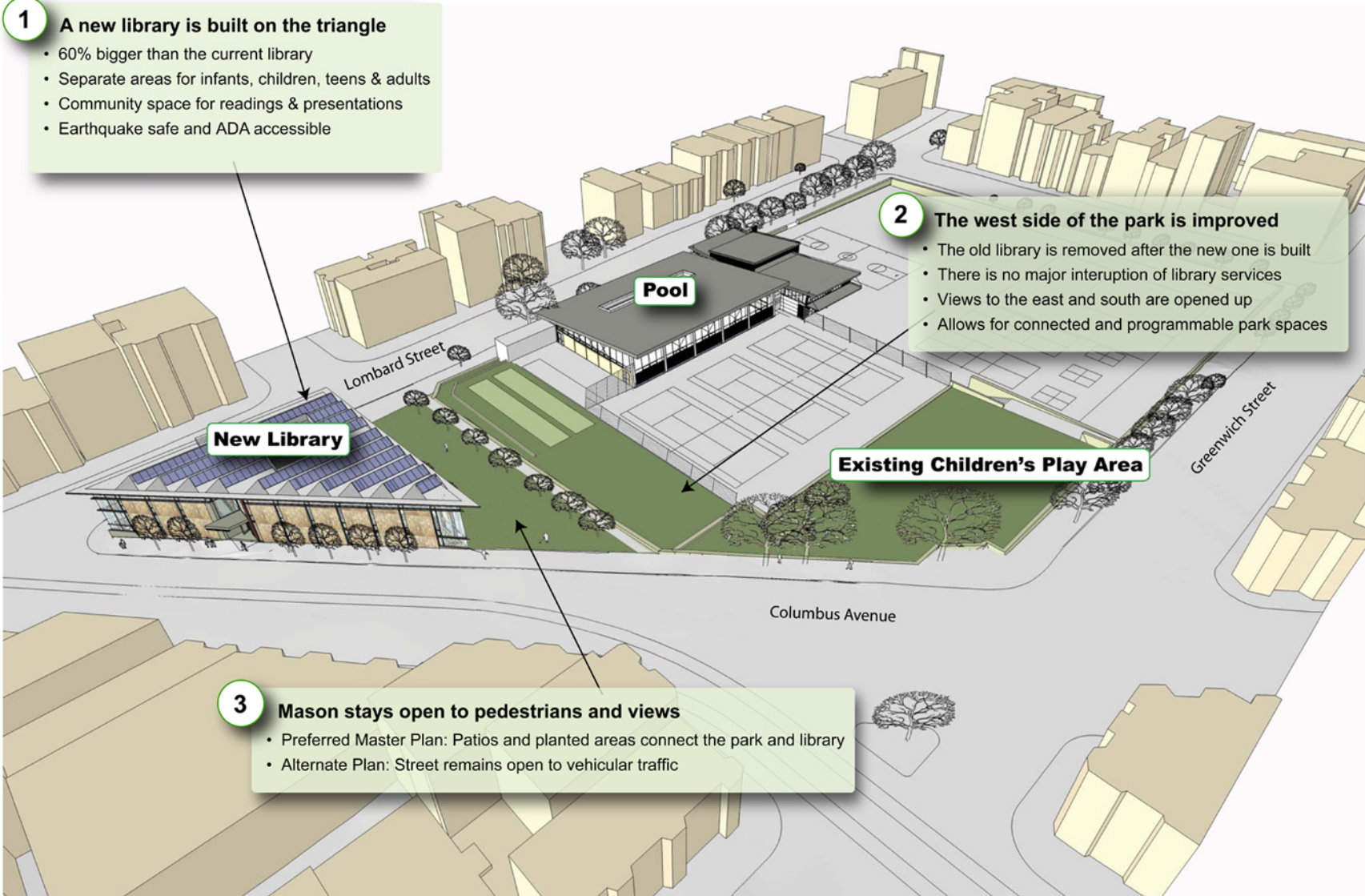
North Beach Branch Library & Joe DiMaggio Playground



- 1 A new library is built on the triangle**
- 60% bigger than the current library
  - Separate areas for infants, children, teens & adults
  - Community space for readings & presentations
  - Earthquake safe and ADA accessible

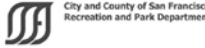
- 2 The west side of the park is improved**
- The old library is removed after the new one is built
  - There is no major interruption of library services
  - Views to the east and south are opened up
  - Allows for connected and programmable park spaces

- 3 Mason stays open to pedestrians and views**
- Preferred Master Plan: Patios and planted areas connect the park and library
  - Alternate Plan: Street remains open to vehicular traffic



Bird's Eye View provided by Leddy Maytum Stacy Architects and the City and County of San Francisco Recreation and Park Department

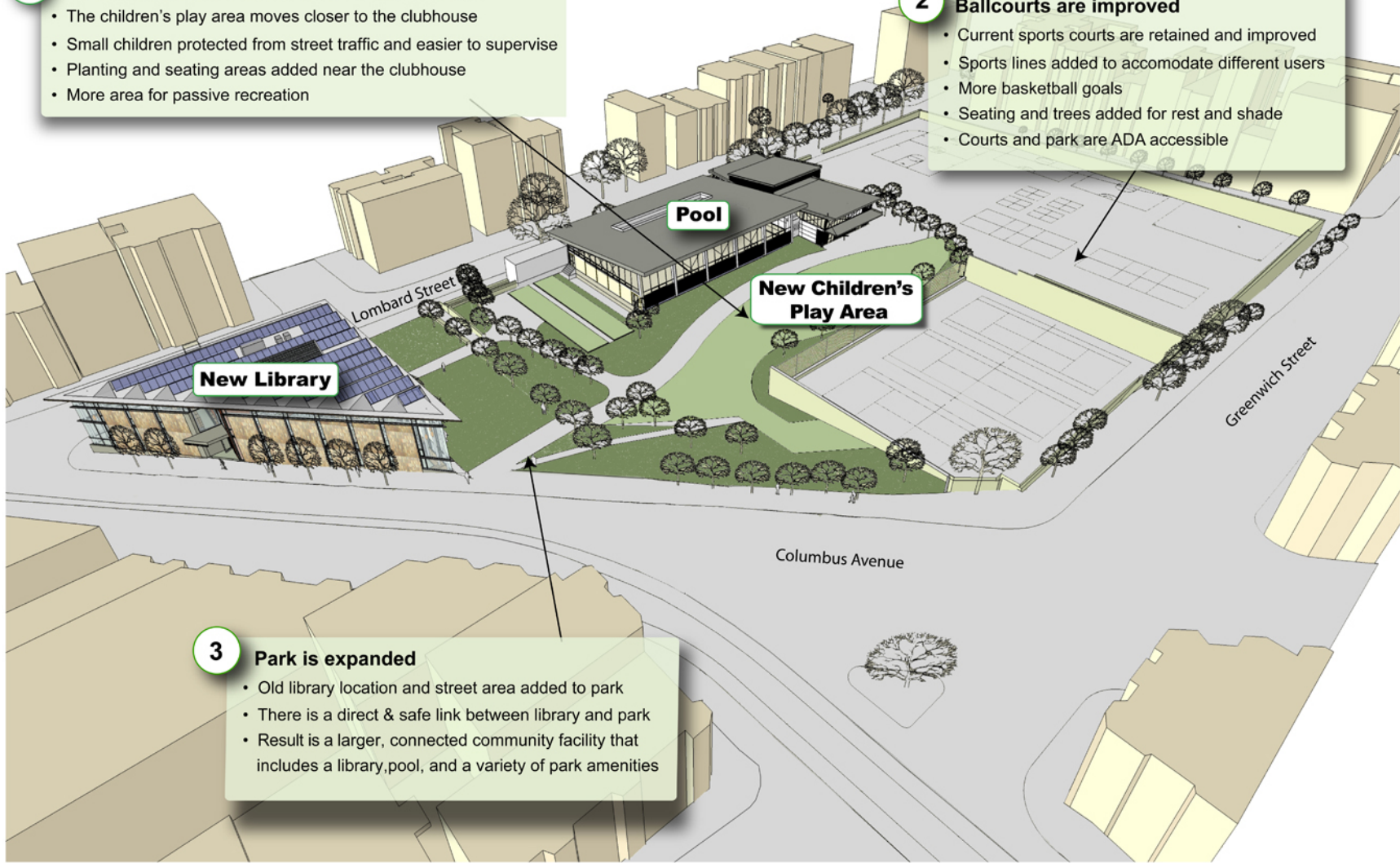
**Phase 1**  
 New North Beach Branch Library and Preliminary Conceptual Design for Temporary Changes to Mason Street & Joe DiMaggio Playground  
 Plan and Design for Specific Park Improvements to be Discussed in Future Community Meetings



- 1 Children's play area moved to center of park**
- The children's play area moves closer to the clubhouse
  - Small children protected from street traffic and easier to supervise
  - Planting and seating areas added near the clubhouse
  - More area for passive recreation

- 2 Ballcourts are improved**
- Current sports courts are retained and improved
  - Sports lines added to accomodate different users
  - More basketball goals
  - Seating and trees added for rest and shade
  - Courts and park are ADA accessible

- 3 Park is expanded**
- Old library location and street area added to park
  - There is a direct & safe link between library and park
  - Result is a larger, connected community facility that includes a library, pool, and a variety of park amenities



Bird's Eye View provided by Leddy Maytum Stacy Architects and the City and County of San Francisco Recreation and Park Department

**Phase 2**

New North Beach Branch Library and Preliminary Conceptual Design for a Renovated & Upgraded Joe DiMaggio Playground Plan and Design for Specific Park Improvements to be Discussed in Future Community Meetings

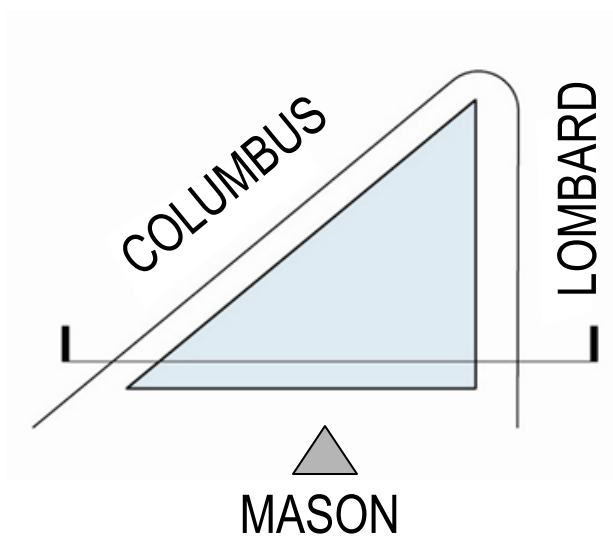
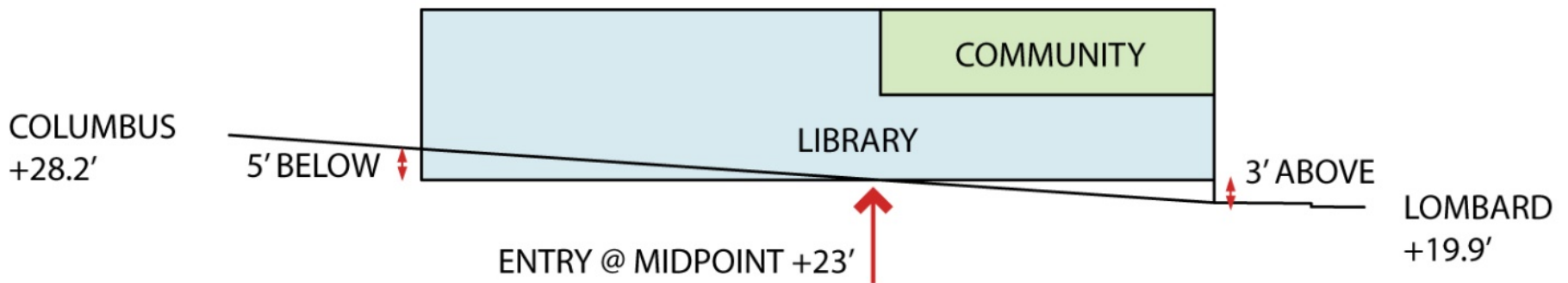




**DESIGN OF LIBRARY – SITE AREA**  
**NORTH BEACH BRANCH PUBLIC LIBRARY**



**DESIGN OF LIBRARY – PROGRAM DISTRIBUTION AND VIEWS**  
**NORTH BEACH BRANCH PUBLIC LIBRARY**

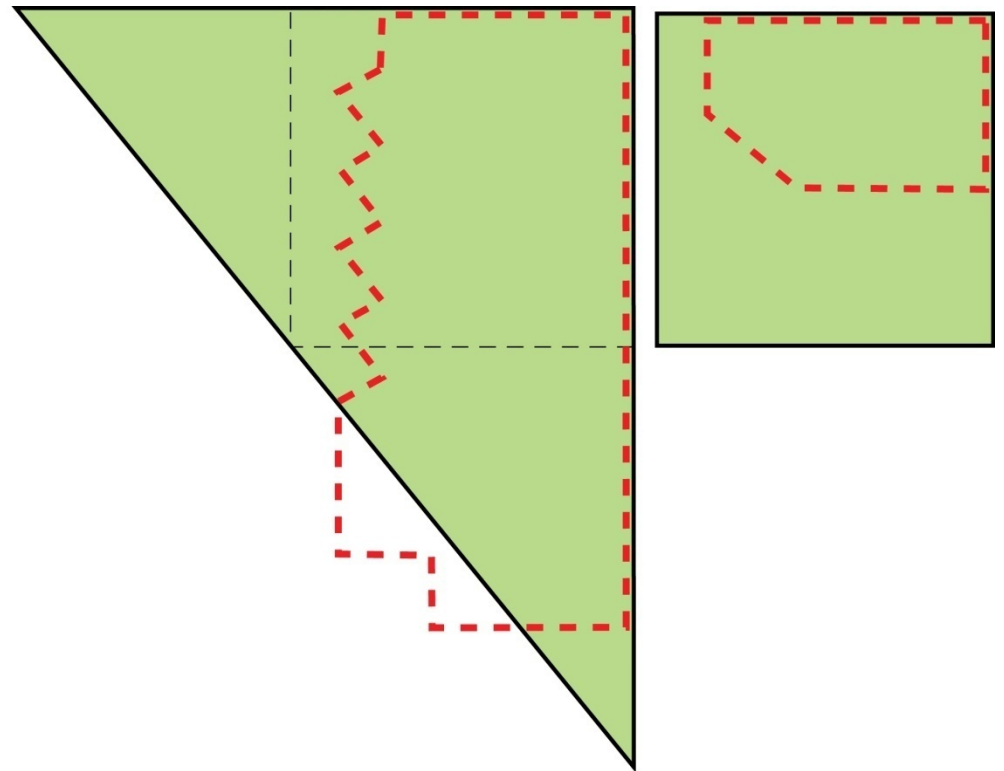


**DESIGN OF LIBRARY – SITE SECTION STRATEGY**  
**NORTH BEACH BRANCH PUBLIC LIBRARY**

# NEW LIBRARY 8,500sf

- Separate children's, teens, & adult areas
- More seating & computers
- Community program room
- Ergonomic, efficient staff workroom
- Space for 10-15% collection capacity

5,330sf vs. 8,500sf  
59% Bigger



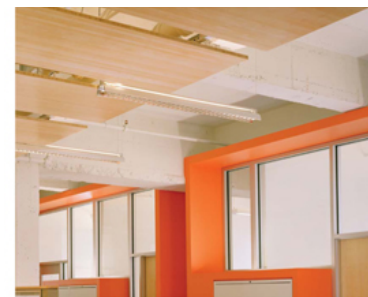
EXISTING AND NEW SIZE COMPARISON

LIBRARY AREA COMPARISON

NORTH BEACH BRANCH PUBLIC LIBRARY

LMS<sup>A</sup>

- Energy Efficiency
- Daylighting / Sun Control
- Superior Indoor Air Quality
- Non-Toxic Building Materials
- Recycled / Renewable Building Materials
- Recycling during Construction
- Possible Roof Solar Photovoltaic Panels
- LEED Silver Rating





**SITE PLAN: OPTION 2 – MASON STREET CLOSED**  
**NORTH BEACH BRANCH PUBLIC LIBRARY**



Joe Di Maggio/ North Beach Playground  
Master Plan Refinement

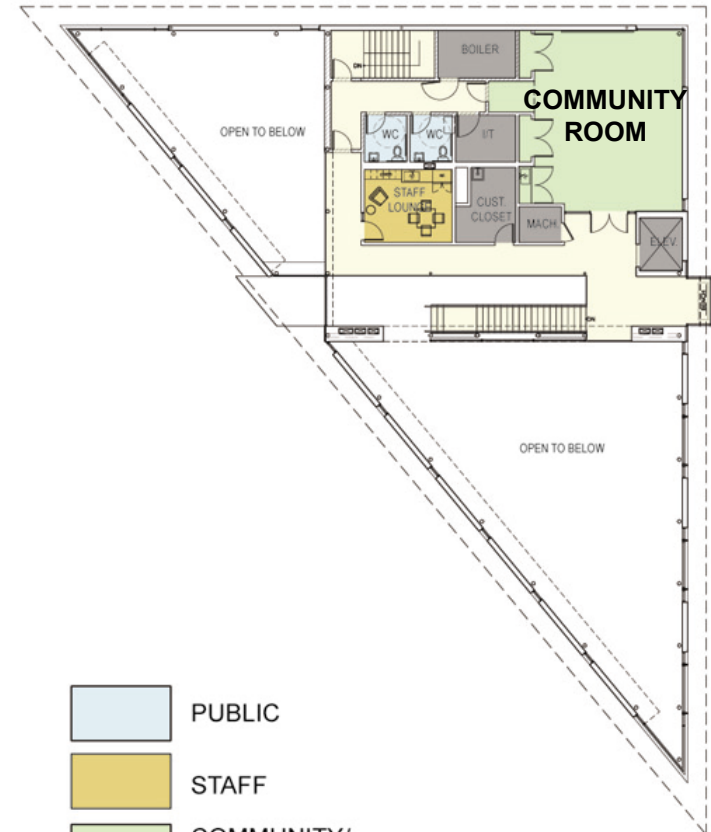
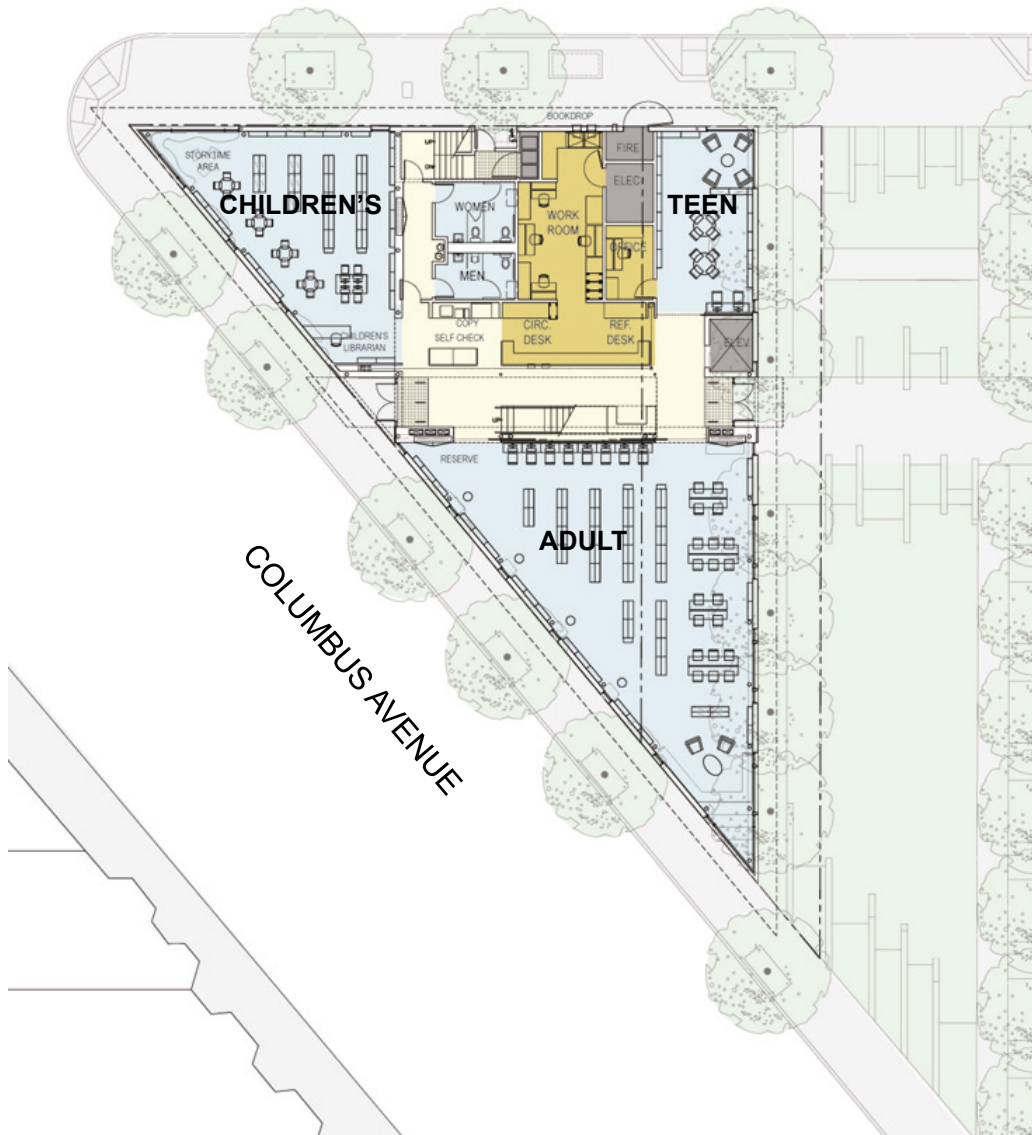
To be further developed after the environmental review process is complete

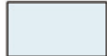
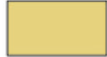
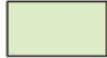

Consultant:  
DEPARTMENT OF PUBLIC WORKS  
CITY AND COUNTY OF SAN FRANCISCO  
LANDSCAPE ARCHITECTURE SECTION  
APRIL, 2010



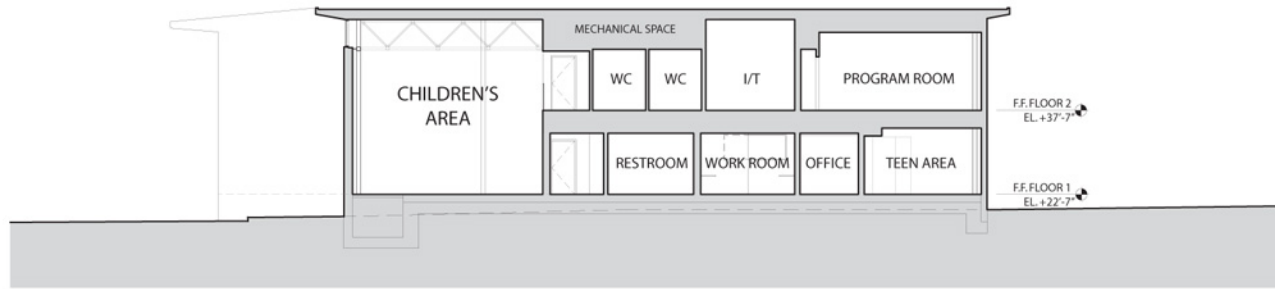


LOMBARD STREET



-  PUBLIC
-  STAFF
-  COMMUNITY/  
PROGRAM ROOM
-  UTILITY / STORAGE

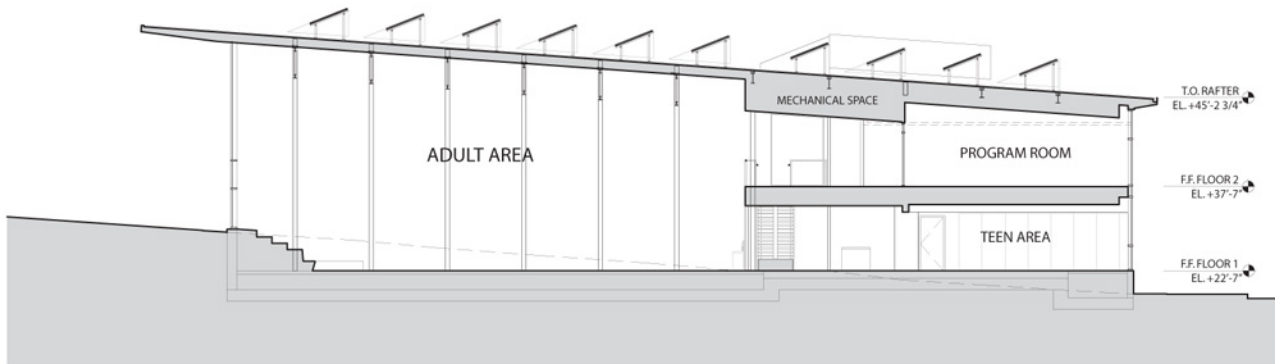
**LIBRARY FLOOR PLAN**  
**NORTH BEACH BRANCH PUBLIC LIBRARY**



EAST-WEST SECTION LOOKING NORTH



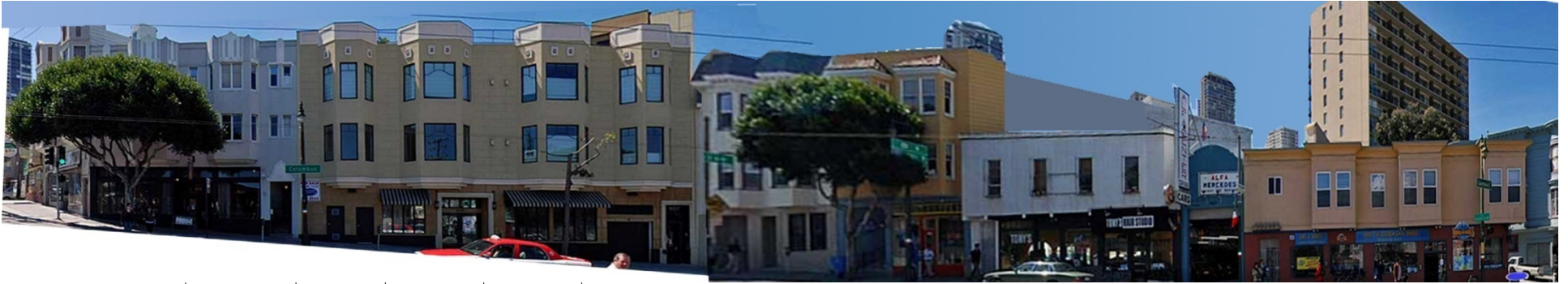
NORTH-SOUTH SECTION LOOKING EAST



NORTH-SOUTH SECTION LOOKING WEST

## LIBRARY SECTION

## NORTH BEACH BRANCH PUBLIC LIBRARY



**DESIGN OF LIBRARY – SITE CONTEXT DIAGRAM**  
**NORTH BEACH BRANCH PUBLIC LIBRARY**



**COLUMBUS AVENUE ELEVATION**  
**NORTH BEACH BRANCH PUBLIC LIBRARY**



**NORTH BEACH BRANCH PUBLIC LIBRARY**



**NORTH BEACH BRANCH PUBLIC LIBRARY**



**NORTH BEACH BRANCH PUBLIC LIBRARY**



**MASON STREET VIEW**

---

**NORTH BEACH BRANCH PUBLIC LIBRARY**



